



Tropical Update



2:00 PM EDT

Wednesday, June 17, 2026

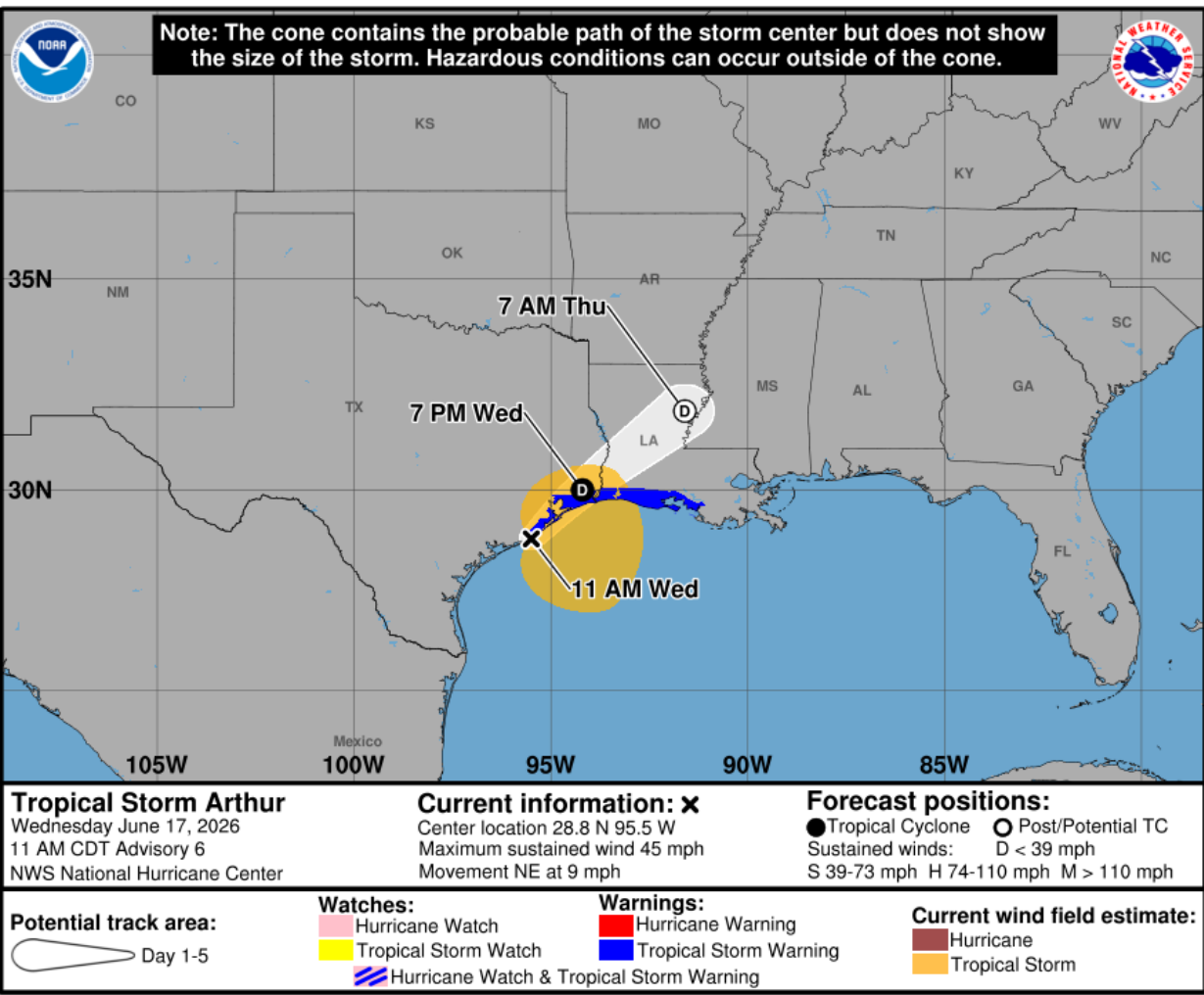
Tropical Storm Arthur forms off Southeast Texas; Flash Flooding Risk Increasing Across Northwest Florida

This update is intended for government and emergency response officials, and is provided for informational and situational awareness purposes only. Forecast conditions are subject to change based on a variety of environmental factors. For additional information, or for any life safety concerns with an active weather event please contact your County Emergency Management or Public Safety Office, local National Weather Service forecast office, or visit the National Hurricane Center website at www.hurricanes.gov.



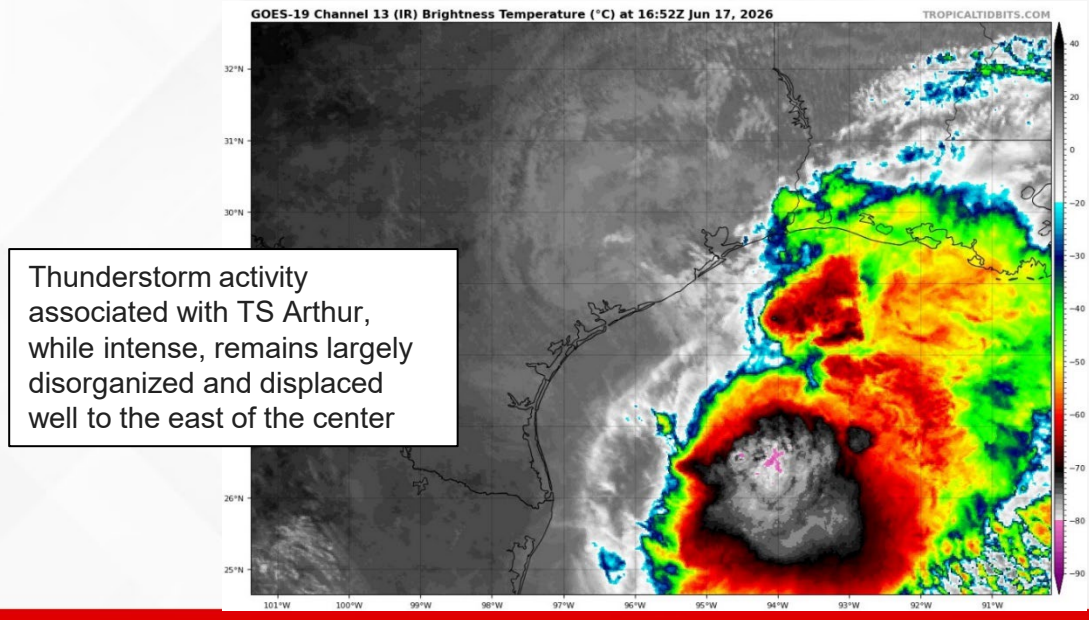
Tropical Storm Arthur

From the National Hurricane Center (NHC)



- **Location:** 60 miles ENE of Port O'Connor, Texas
- **Maximum Sustained Winds:** 45 mph
- **Current Movement:** NE at 9 mph
- **FL Watches/Warnings:** None

The first named system of 2026, Tropical Storm Arthur, has been designated just off the Southeast Texas coastline. Reconnaissance data from an Air Force Hurricane Hunter flight earlier today found sufficiently strong winds and a closed low-level circulation, prompting the upgrade to a tropical storm. An increase in forward speed is expected today. On the forecast track, the low-pressure area should move northeastward along the Texas coast today and then move inland over southwestern Louisiana by tonight. Weakening is expected once the low moves inland.





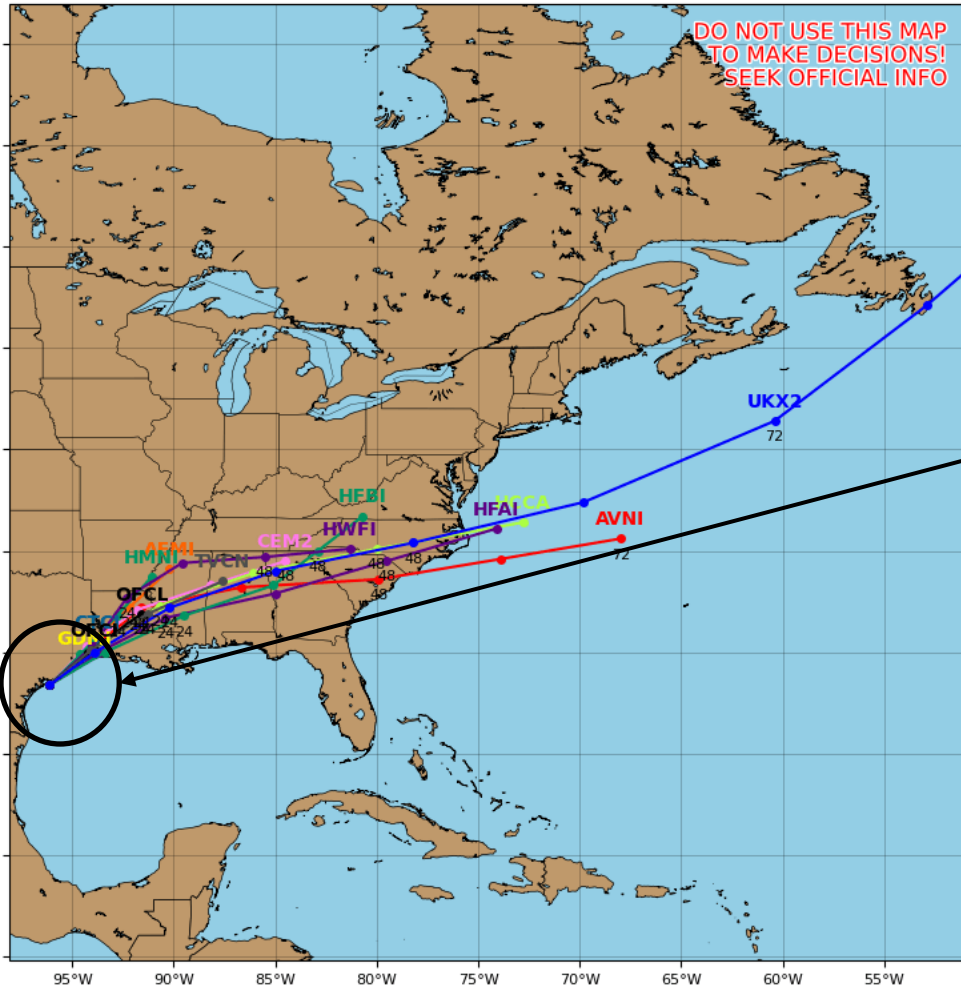
Computer Models (Deterministic)

Tropical Storm Arthur – Next 5 to 7 Days

Tropical Storm ONE Model Track Guidance

Initialized at 12z Jun 17 2026

Levi Cowan - tropicaltidbits.com

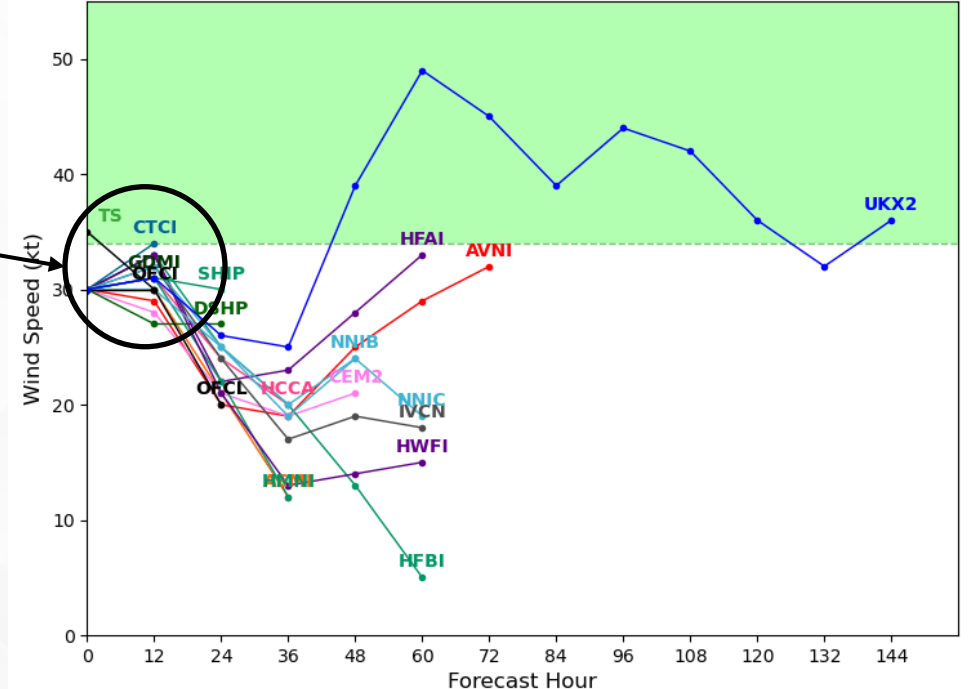


• TS Arthur will make landfall along the TX/LA border later today, followed by rapid weakening and dissipation shortly after

Tropical Storm ONE Model Intensity Guidance

Initialized at 12z Jun 17 2026

Levi Cowan - tropicaltidbits.com



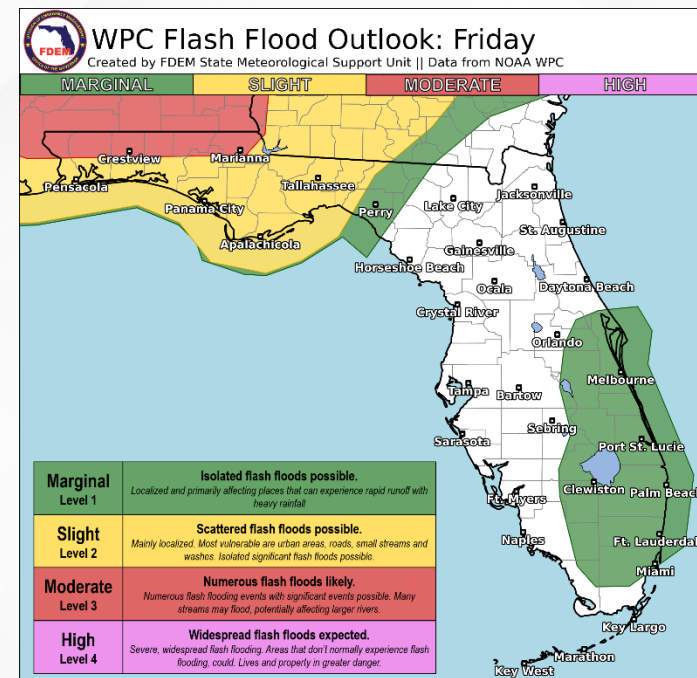
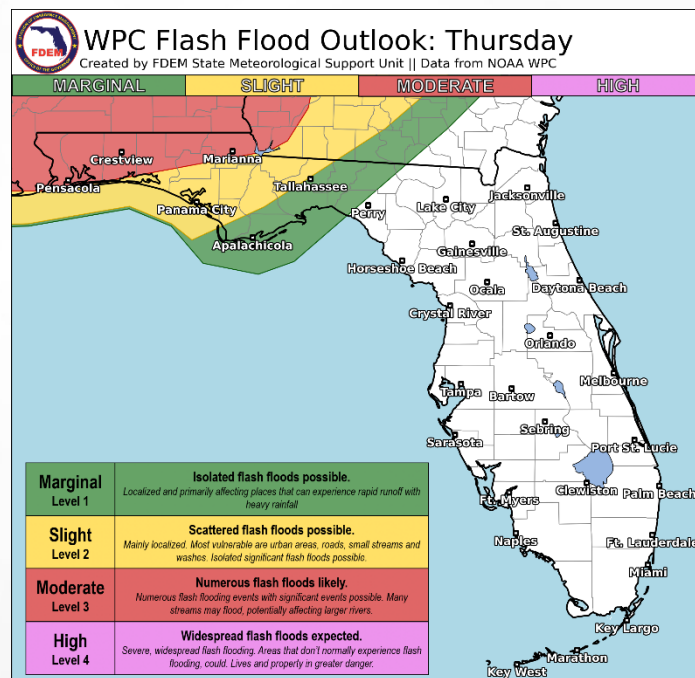
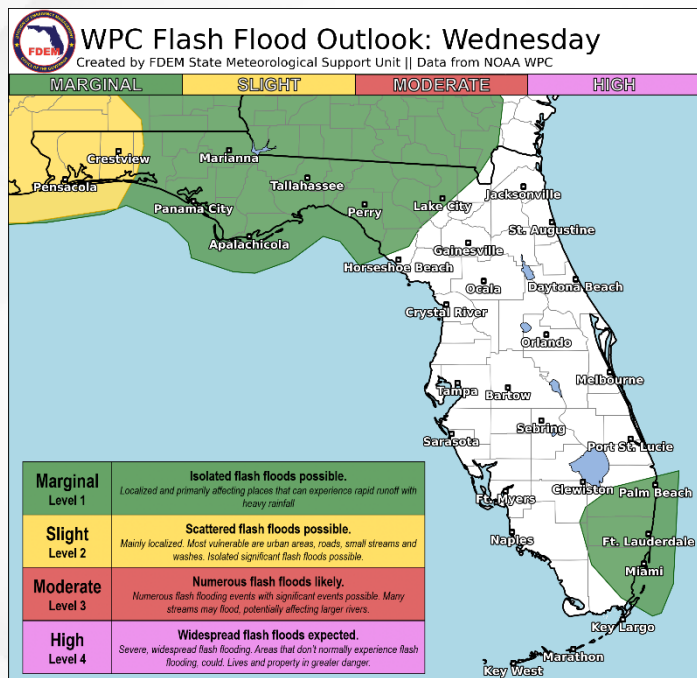


Flash Flood Outlooks

From the Weather Prediction Center (WPC)

Confidence is increasing for **numerous instances of flash flooding** across the Florida Panhandle through Friday associated with tropical moisture from TS Arthur and interactions with an approaching cold front. Richly moist air will promote the development of storms that are highly efficient rainmakers. Furthermore, model guidance and official WPC forecasts have indicated the potential for training/back-building storm complexes to develop that may further exasperate the flooding rain threat.

The highest risk days are on Thursday and Friday across the Western Panhandle as swaths of heavy rainfall from the remnants of TS Arthur will be spreading across the SE U.S.. A **Moderate Risk (level 3 of 4) for Flash Flooding** has been outlooked by the Weather Prediction Center (WPC) on both Thursday and Friday to represent this risk. A **Marginal (level 1 of 4) to Slight Risk (level 2 of 4) for Flash Flooding** is outlooked elsewhere across portions of the Central and Eastern Panhandle on these days.





Excessive Rainfall Outlook

From the Weather Prediction Center (WPC)

Understanding WPC Excessive Rainfall Risk Categories

<p>No Area/Label</p> <p>Flash floods are generally not expected.</p> <p>www.wpc.ncep.noaa.gov @NWSWPC</p>	<p>MARGINAL (MRGL)</p> <p>Isolated flash floods possible</p> <p>Localized and primarily affecting places that can experience rapid runoff with heavy rainfall.</p>	<p>SLIGHT (SLGT)</p> <p>Scattered flash floods possible</p> <p>Mainly localized. Most vulnerable are urban areas, roads, small streams and washes. Isolated significant flash floods possible.</p>	<p>MODERATE (MDT)</p> <p>Numerous flash floods likely</p> <p>Numerous flash flooding events with significant events possible. Many streams may flood, potentially affecting larger rivers.</p>	<p>HIGH (HIGH)</p> <p>Widespread flash floods expected</p> <p>Severe, widespread flash flooding. Areas that don't normally experience flash flooding, could. Lives and property in greater danger.</p>
<p>Flash flooding near me?</p> <p>Flash Flooding</p> <p>NO Flash Flooding</p>				
<p>WEATHER PREDICTION CENTER</p>				

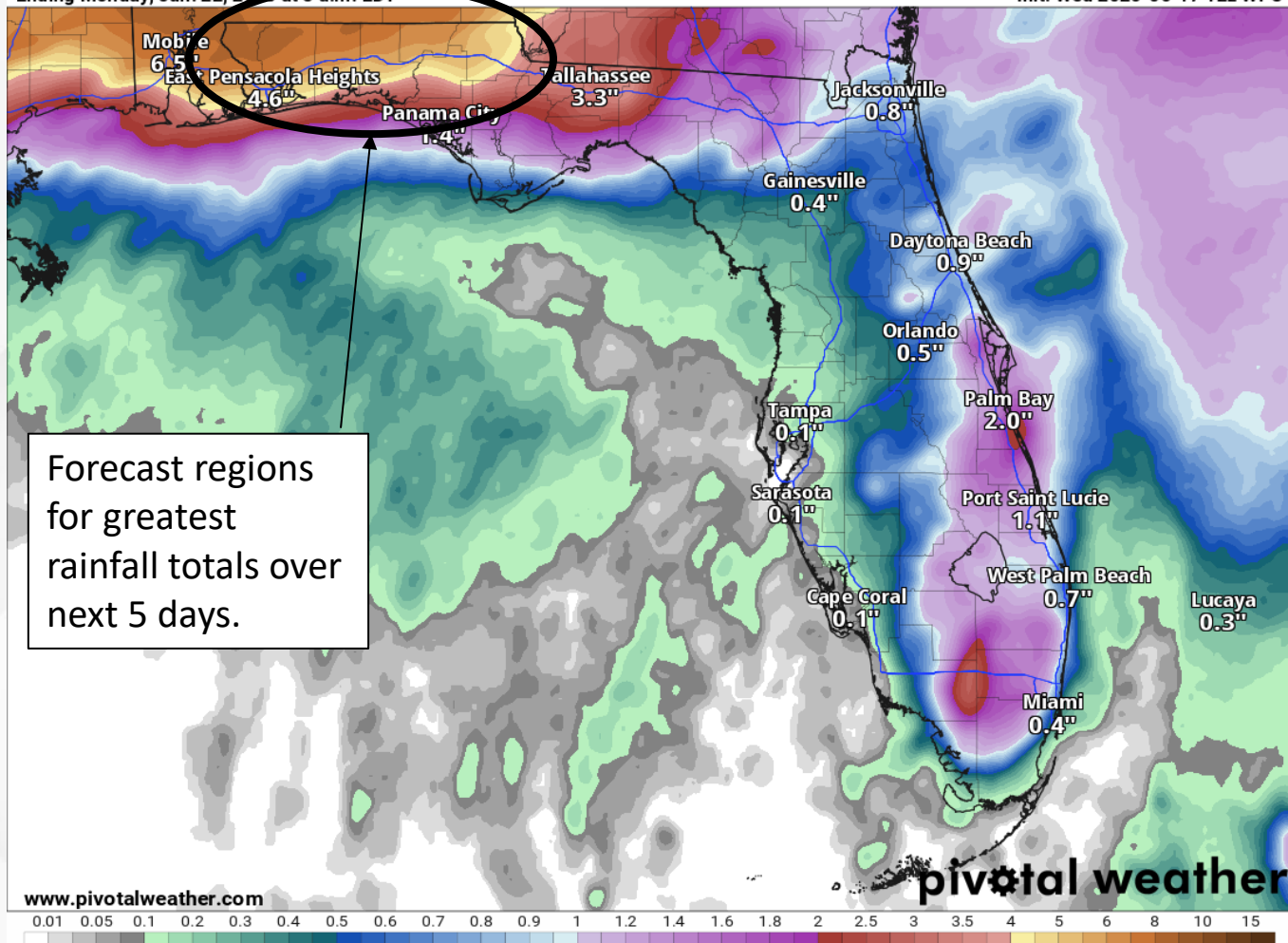


Forecast Rainfall Totals – 5-Day

From the Weather Prediction Center (WPC)

120-Hour Precipitation (in)
Ending Monday, Jun. 22, 2026 at 6 a.m. EDT

Init: Wed 2026-06-17 12z WPC



Similar to previous days, moisture associated with now TS Arthur is continuing to be funneled over the northern half of the state. Richly moist tropical air is promoting the development of widespread showers and thunderstorms across the SE U.S. and will continue to do so through Friday.

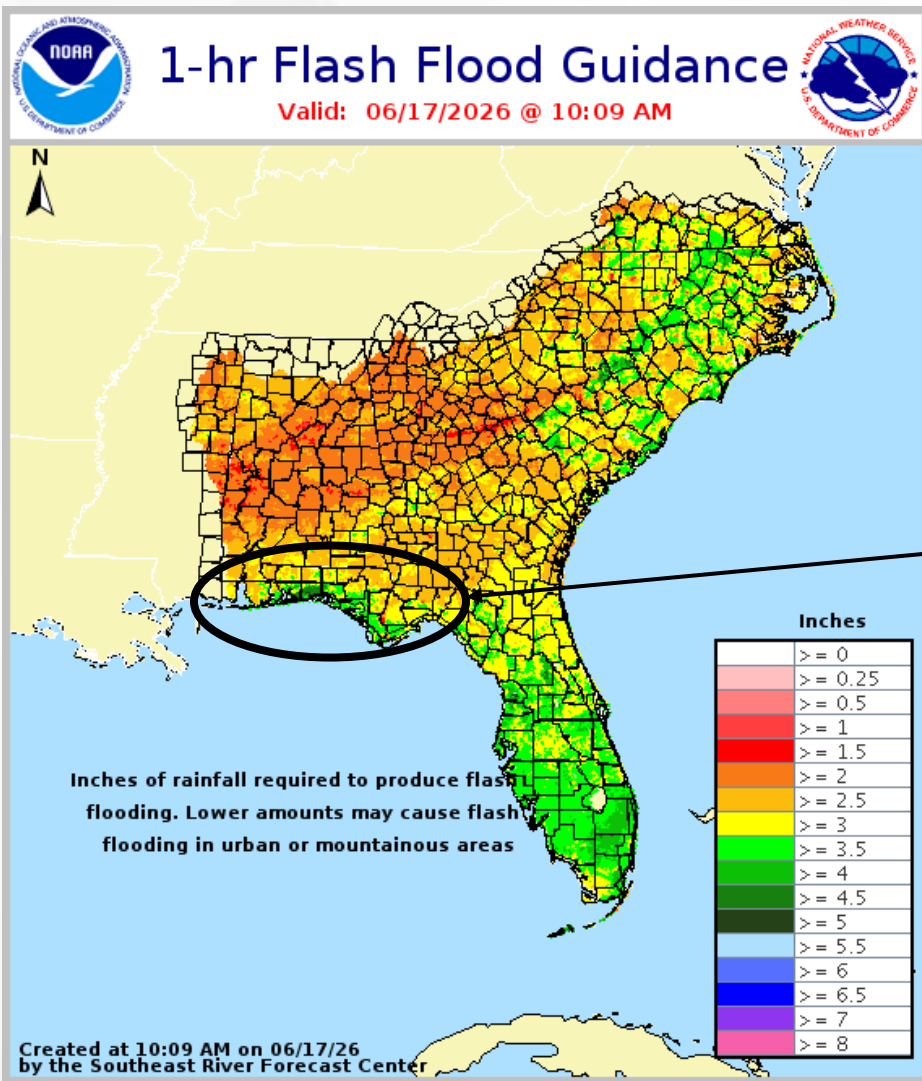
TS Arthur is expected to make landfall near the TX/LA border sometime later today. Arthur will quickly dissipate following landfall; however, the remnants of the storm will continue its east-northeastward track on Thursday. At the same time, a cold front will begin to dive southward. The combination of moisture and lift from Arthur's remnants and from the approaching cold front will create a very favorable zone of concentrated lift that will likely lead to very heavy rainfall on Thursday and Friday across much of the Southeast. Computer forecast models have also begun to depict the possibility of training thunderstorm complexes over localized areas, which could lead to significant flooding.

In all, widespread totals of **4-6"** is currently expected across the Western Panhandle, with **2-4"** across the Central and Eastern Panhandle. It is important to remember that this rainfall will be in addition to rain that has already fallen in previous days, and that some isolated locations may see higher accumulations of **6-8"+**, especially if large bands of training storms become established.



Flash Flood Guidance

From the Southeast River Forecast Center (SERFC)



Multiple days of heavy rainfall across the southeast have prompted lower flash flood guidance (FFG) thresholds.

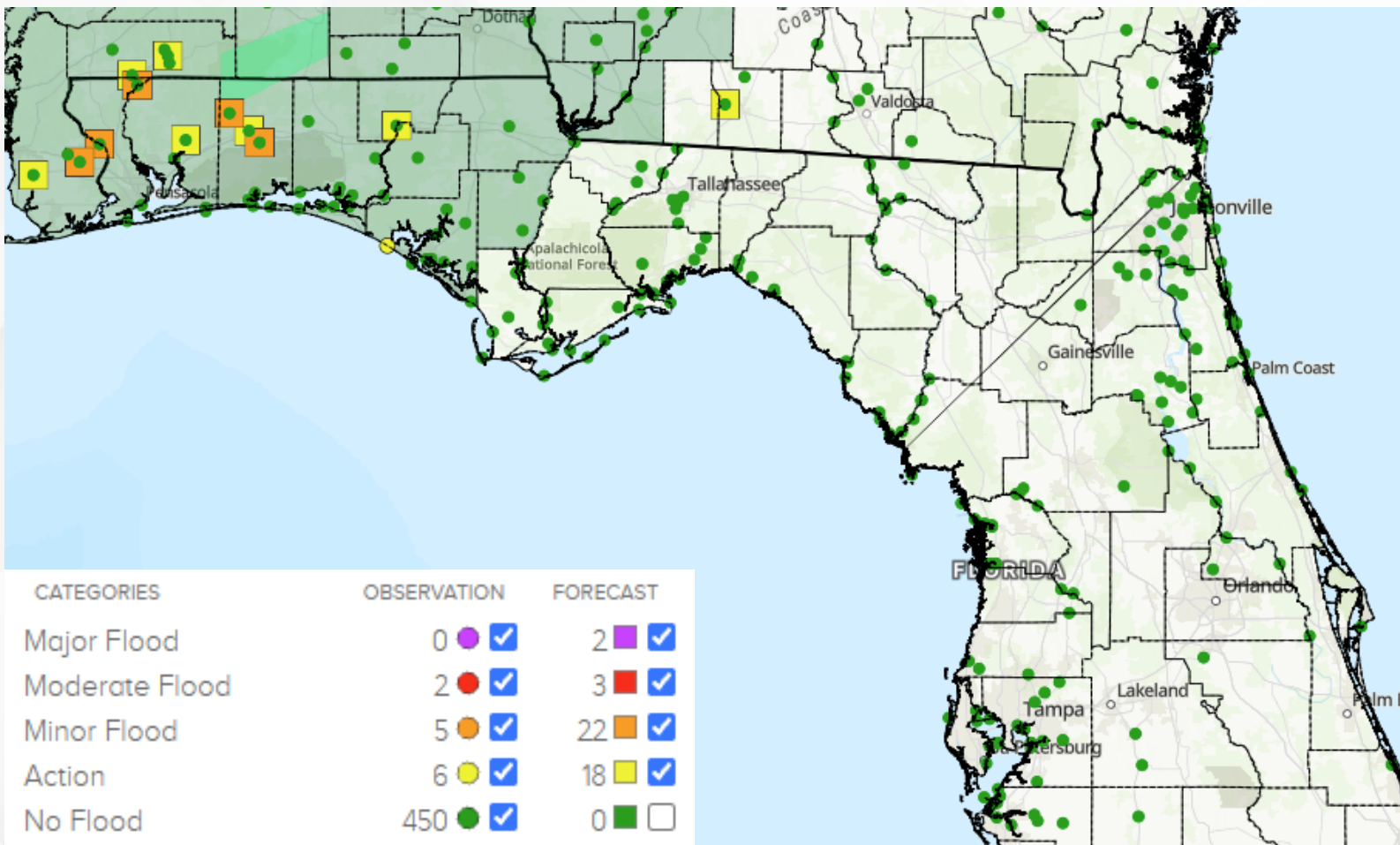
FFG values across most inland Panhandle locations are around 2.5"-3" in 1 hour.

These thresholds are likely to further decline as ongoing and forecasted rainfalls continue to saturate soils.



Riverine Flooding

From the National Water Prediction Service (NWPS)



Various river gauges across the Western Panhandle are now expected to reach **action** or **minor** flood stages in the coming days.

The following river gauges are expected to reach **Minor Flood Stage**:

[Perdido River near Barrineau Park](#), [Escambia River near Century](#), [Blackwater River near Baker](#), and the [Shoal River near Crestview](#).

The following river gauges are expected to reach **Action Flood Stage**:

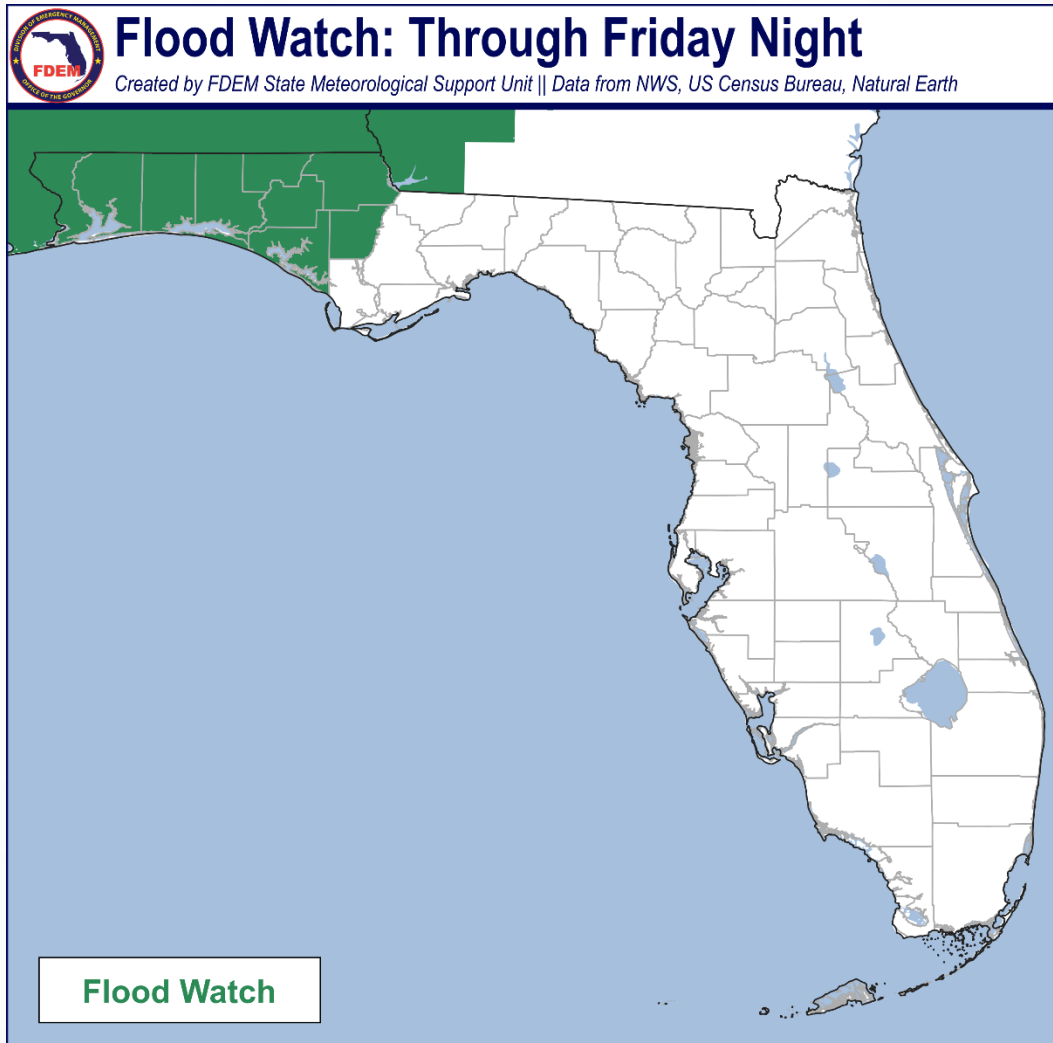
[Big Coldwater Creek near Milton](#), [Yellow River near Milligan](#), and the [Choctawhatchee River at Caryville \(US 90\)](#).



Flood Watch

Valid from Thursday AM to Friday PM

A **Flood Watch** is in effect for portions of the Western and Central Panhandle through Friday night in anticipation for widespread and repeated rounds of heavy tropical rainfall associated with the remnants of TS Arthur.





Flood Safety

From the National Weather Service (NWS)

3 SIMPLE STEPS FOR FLASH FLOOD SAFETY

During a flood, water levels and the rate at which the water is flowing can quickly change. Remain aware and monitor local radio and television.



[weather.gov/flood](https://www.weather.gov/flood)

1 GET TO HIGHER GROUND

Get out of the areas subject to flooding

2 DO NOT DRIVE INTO WATER

Do NOT drive or walk into flooded areas. It only takes 6" of water to knock you off your feet.

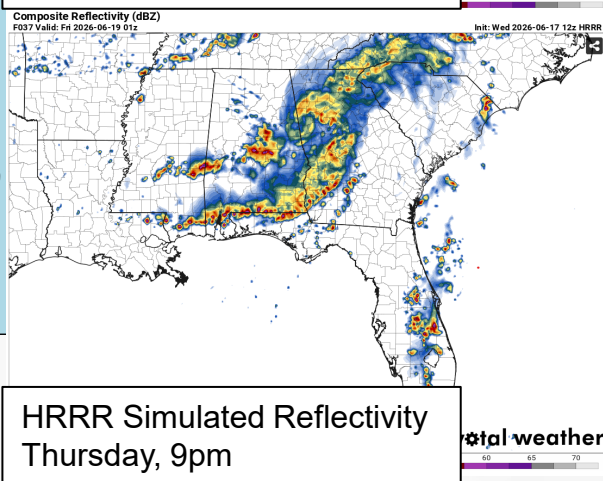
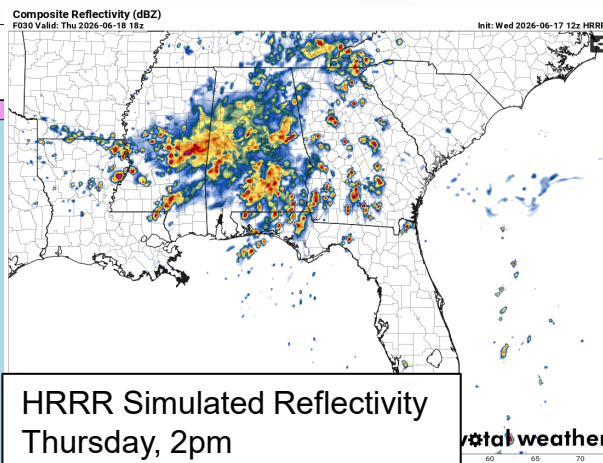
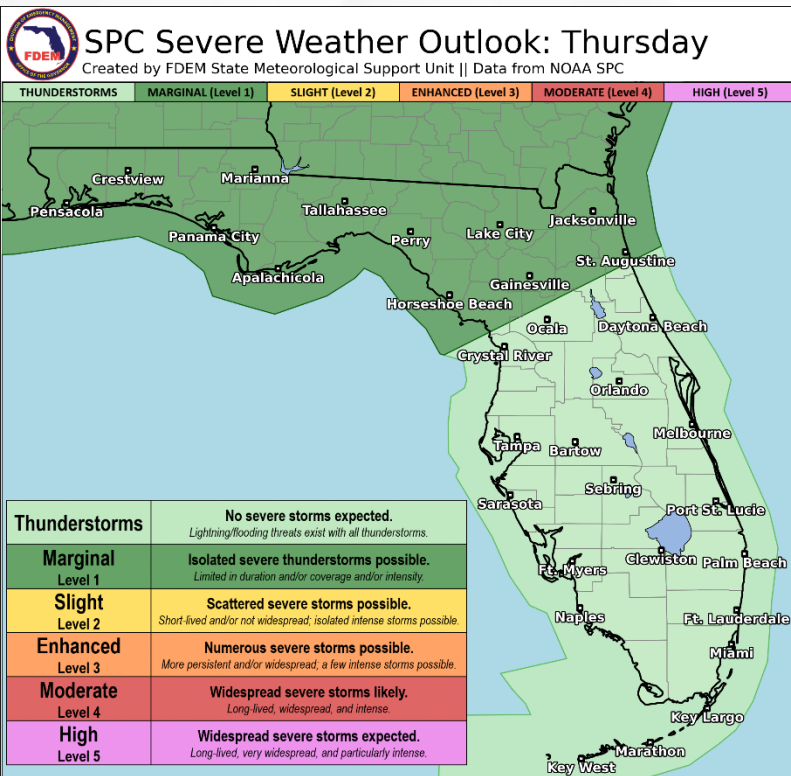
3 STAY INFORMED

Monitor local radar, television, weather radio, internet or social media for updates.



Severe Weather Outlook

From the Storm Prediction Center (SPC)



The Storm Prediction Center (SPC) is highlighting a **Marginal Risk (level 1 of 5) for Severe Weather** across all North Florida on Thursday. Primary hazards include isolated damaging wind gusts and a few brief tornadoes.

The remnants of Tropical Storm Arthur will track to the north of Florida tomorrow, supplying sufficient atmospheric ingredients for the development of a tornado or two. Unstable air from ample moisture will allow storms to persist throughout the day; some of which may be **strong to severe**.

Depictions of tomorrow's storm coverage from computer forecast models indicates the potential for initially more scattered thunderstorms/supercells to organize into a more congruent line of thunderstorms that may be accompanied with isolated strong wind gusts.

For more information, please visit [The Storm Prediction Center's website](#).



Summary

FOUO – For Government Official Use Only

Tropical Storm Arthur:

- Former **Potential Tropical Cyclone ONE** has been upgraded to **Tropical Storm Arthur** by the National Hurricane Center as of 11am EDT.
- Arthur has maximum sustained winds of 45mph and a minimum central pressure of 999mb.
- Arthur is accelerating northeastward, with an expected landfall near the TX/LA border later this evening.
- Very heavy rainfall is currently spreading across the Southeast, with the eventual remnants of Arthur expected to continue supplying heavy rain and flash flooding through Friday.
- ***This system poses no direct threat to Florida over the next 7 days; however, repeated rounds of heavy rainfall that may lead to scattered instances of flash flooding are expected across the Florida Panhandle associated with moisture from this disturbance.***
- The next name on the list is **Bertha** (*BUR-thuh*).

Florida Outlook:

- There is currently no threat of direct impacts to Florida expected from this system.
- However, moisture associated with Arthur is promoting the development of widespread swaths of heavy rainfall across North Florida. Rainfall is expected to continue through Friday as the remnants of the storm pass to our North and interact with an approaching cold front.
- Forecast rainfall totals over the next 7-days are highest in the Western Panhandle at around **4-6"**, although some isolated locations may see higher accumulations of **6-8"+**, especially if large bands of training storms become established.
- Rainfall accumulations across inland Central and Eastern Panhandle areas that are farther removed from the disturbance's moisture plume are lower, at around **2-4"**.
- It is important to remember that this rainfall will be in addition to rain that has already fallen in recent days.
- The Weather Prediction Center (WPC) is outlooking multiple consecutive days of risk for flash flooding this week across the state.
 - The highest risk days are on Thursday and Friday across the Western Panhandle as swaths of heavy rainfall from the remnants of TS Arthur will be spreading across the SE U.S.
 - A **Moderate Risk (level 3 of 4) for Flash Flooding** has been outlooked by the WPC on both Thursday and Friday to represent this risk.
 - A **Marginal (level 1 of 4) to Slight Risk (level 2 of 4) for Flash Flooding** is outlooked elsewhere across portions of the Central and Eastern Panhandle on these days.
- Various creek, stream, and river gauges throughout the Panhandle are expected to crest into Action to **Minor Flood Stage** later this week and additional updates are expected as heavy rainfall develops through the end of the week.
- A **Marginal Risk (level 1 of 5) for Severe Weather** is outlooked for much of North Florida on Thursday as sufficient atmospheric ingredients provide an environment for locally strong to severe thunderstorms. Damaging winds (40-60 mph) and a few tornadoes are the primary hazards.

The next briefing packet will be issued on Thursday. For the latest information, please visit the [National Hurricane Center website](#).



Tropical Update

FOUO – For Government Official Use Only



Created by:

Ian Mutschler, Deputy State Meteorologist

Ian.Mutschler@em.myflorida.com

State Meteorological Support Unit

Florida Division of Emergency Management

Users wishing to subscribe (approval pending) to this distribution list, register at:

https://public.govdelivery.com/accounts/FLDEM/subscriber/new?topic_id=SERT_Met_Tropics.

Other reports available for subscription are available at:

<https://public.govdelivery.com/accounts/FLDEM/subscriber/new?preferences=true>