



Florida Division of Emergency Management State Watch Office

Morning Situation Report

Wednesday, June 17, 2026



State Emergency Operations Center Activation Level

Level 2: Partial Activation



SERT On-Call Personnel

Position	Personnel	Phone	Email
Operations Chief	Sam Walters	(850) 519-8638	Sam.Walters@em.myflorida.com
Watch Officer	Sam Walters	(850) 519-8638	Sam.Walters@em.myflorida.com
Duty Officer	Jeremy Whitt	(850) 755-8521	Jeremy.Whitt@em.myflorida.com
Operations Officer- Day	Ian Danley	(850) 815-4001	SWP@em.myflorida.com
Operations Officer- Swing	Ahnaya Benjamin	(850) 815-4001	SWP@em.myflorida.com
Operations Officer- Night	Daniel Leader	(850) 815-4001	SWP@em.myflorida.com
Meteorologist	Ian Mutschler	(850) 688-2119	Ian.Mutschler@em.myflorida.com
Plans Chief	Kaylynn Perry	(850) 254-5657	Plans_Command@em.myflorida.com
Logistics Chief	Christina Goetzman	(850) 519-8581	Christina.Goetzman@em.myflorida.com
Human Services Branch Director	Pam Hughes	(850) 528-5638	Pamela.Hughes@em.myflorida.com
Emergency Services Branch Director	Tim Kenyon	(850) 591-7732	Tim.Kenyon@em.myflorida.com
Infrastructure Branch Director	Paige Lay	(850) 591-9933	Paige.Lay@em.myflorida.com
ESF 8: Health & Medical On-Call	Brandon Gore	(866) 786-4673	DLDOHDutyOfficers@flhealth.gov
ESF 14: Public Information Officer	Stephanie Hartman	(850) 570-3053	Stephanie.Hartman@em.myflorida.com
Finance Chief	Jeremy Smith	(850) 273-1273	Jeremy.Smith@em.myflorida.com



Response Regional Coordination Team



Team	County Location	Visits
Region 1: Jim Roberts	Okaloosa	Region 1 Quarterly Meeting
Region 2: Enrique Gaston	Franklin	EM/Fire Meeting
Region 3: Glen Hammers	Leon	RDSTF Meeting
Region 4: Tara Kostich	Putnam	LSA Meeting (Palatka Airport)
Region 5: Austin Beeghly	Orange	EM Meeting
Region 6: Paul Siddall	Leon, Hillsborough	Logistics Meeting / Travel to Region 2 (FDEM HQ)
Region 7: Vacant	N/A	N/A (See Coverage)
Region 8: Vacant	N/A	N/A (See Coverage)
Region 9: Brittany Bremer	DeSoto	EOC Planning Section Chief Training
Region 10: Claudia Baker	Broward, Miami-Dade	Quarry 2 Wildfire Support / NPP Ingestion Workshop

Region 6 Coverage Provided By Recovery Coordinator 6
 Region 7 Coverage Provided By Recovery Coordinator 6 & 9
 Region 8 Coverage Provided By Response Coordinator 5

Status
Normal Operations
Out of Service / Unavailable



Recovery Regional Coordination Team

Team	County Location	Status / Activities
Region 1: Allison Blevins	Okaloosa	Regional Quarterly Meeting
Region 2: Justin Lazzara	Leon	RDSTF Meeting
Region 3: Kevin Blom	Bradford	FL-393 Training
Region 4: Joshua Saunders	Bradford	FL-393 Training
Region 5: Elizabeth Caison	Orange	Retirement Event
Region 6: Rick Rogers	Citrus	LMS Work Group Meeting
Region 7: Vacant	N/A	N/A (See Coverage)
Region 8: Vacant	N/A	Leave (See Coverage)
Region 9: Vacant	N/A	N/A (See Coverage)
Region 10: Brian Lee	Broward	LMSWG Quarterly Meeting

Region 7 Coverage Provided By Recovery Coordinator 6 & Recovery RC Supervisor

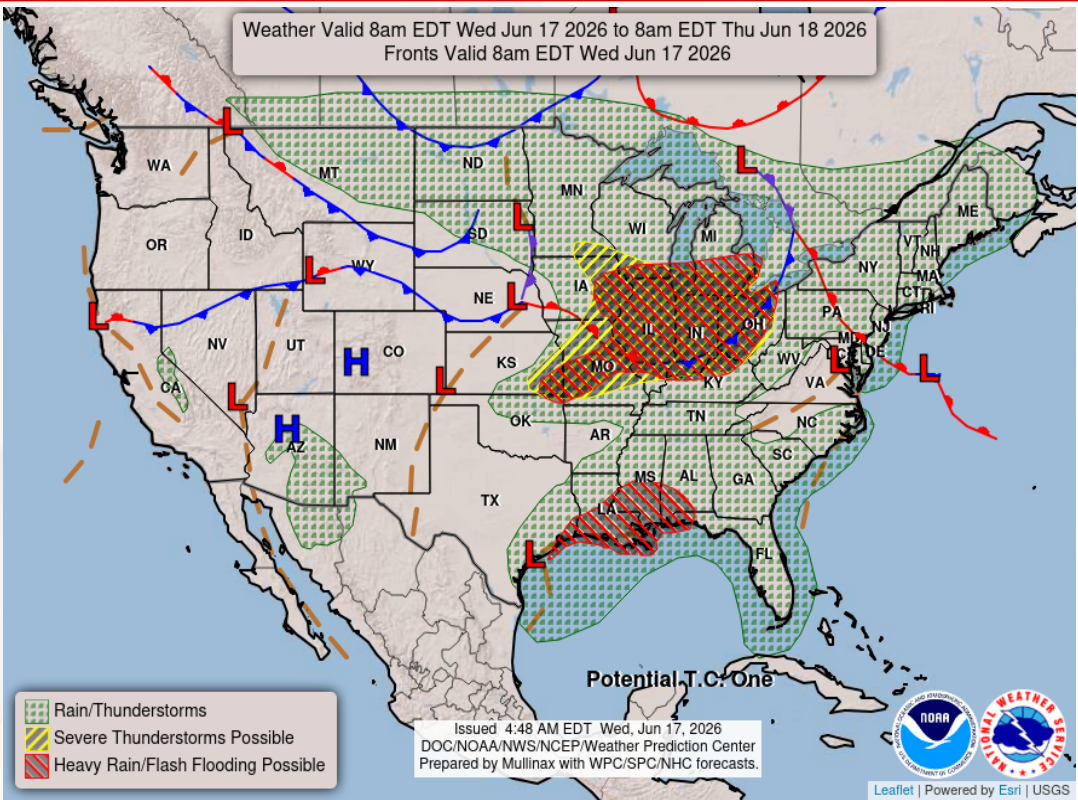
Region 8 Coverage Provided By Recovery Coordinator 5 & 10

Region 9 Coverage Provided By Recovery Coordinator 6 & Recovery RC Supervisor

Status
Normal Operations
In Region / Delayed Response
Deployed / Delayed Response
Out of Service / Unavailable

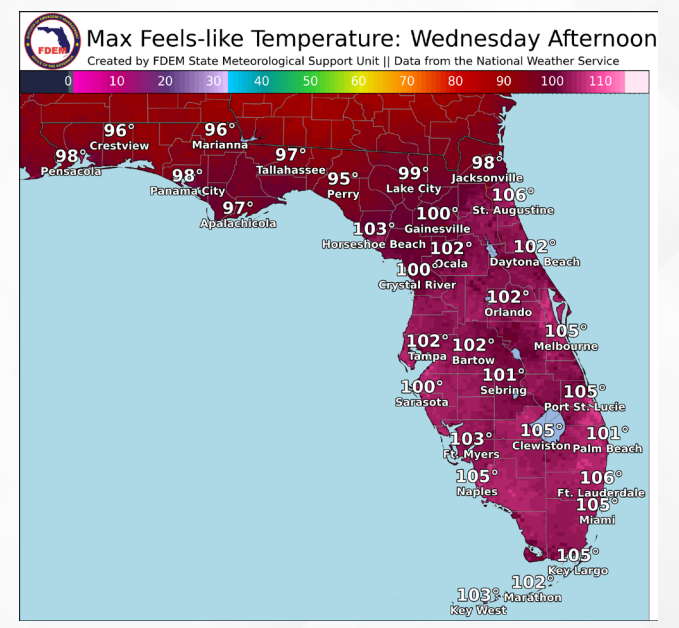
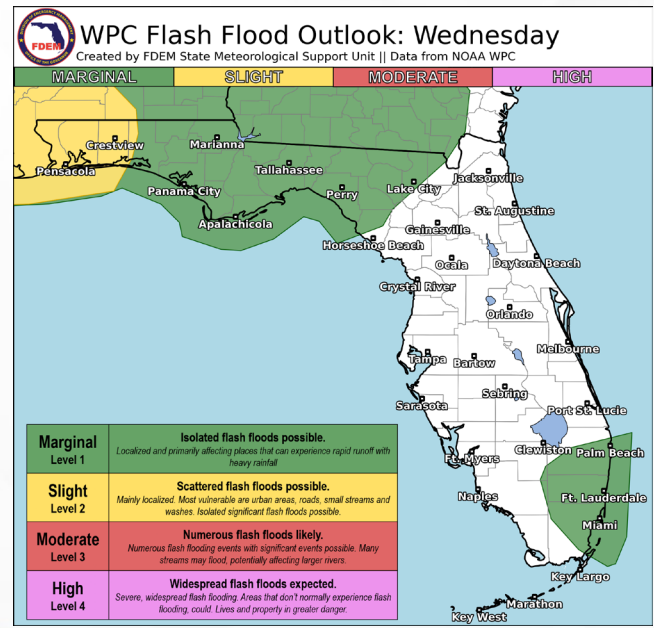


Meteorology Summary



Today's Weather Map

Threat	R1	R2	R3	R4	R5	R6	R7	R8	R9	R10
Lightning	H	H	H	M	M		L	M	L	M
Tornado										
Damaging Wind										
Hail										
Flash Flooding	M	L	L	L				L		L
Extreme Heat			L	L	L	L	L	L	L	M
Fog (Overnight)										
Wildfire										
Rip Currents	H	H	L	L	M	M		M	M	L
Lake Okeechobee Elevation	11.11 ft. (2.07 ft. <u>Below Normal</u>)									
Keetch-Byram Drought Index	411 (-) on a scale from 0 (very moist) to 800 (very dry)									



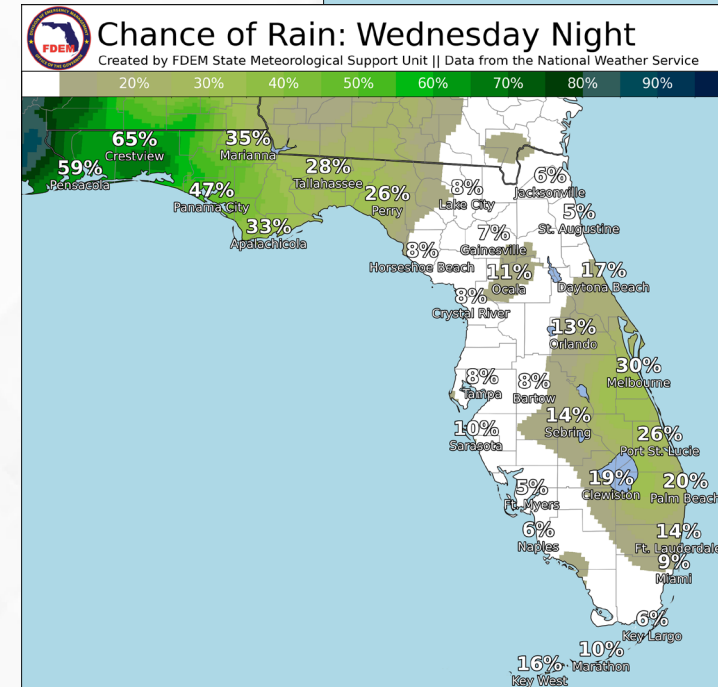
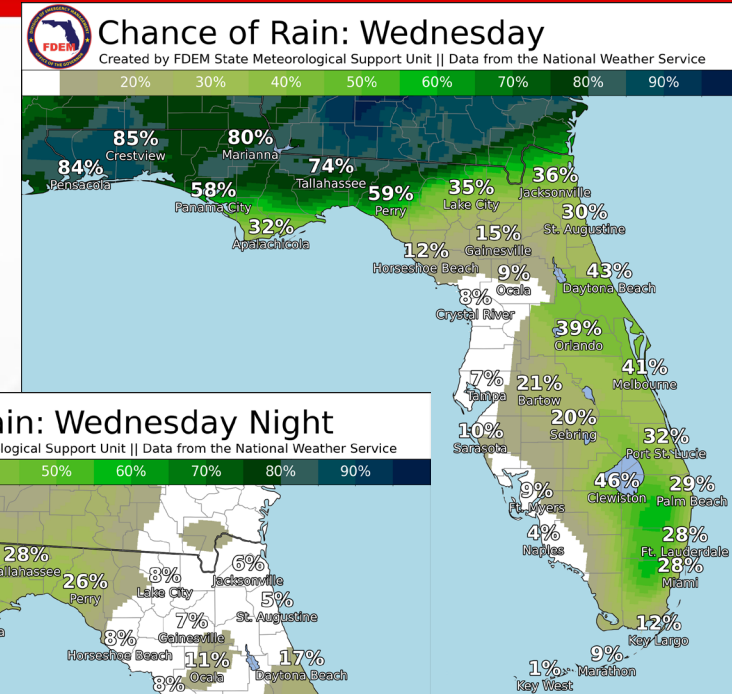


Meteorology Summary

Statewide Overview, Next 24 Hours:

Yet another wet and unsettled day is expected across the Florida Panhandle as tropical moisture associated with Potential Tropical Cyclone ONE is pulled across these areas. Like yesterday, numerous and repeated rounds of generally east-northeastward moving showers and thunderstorms are anticipated across nearly the entire day. High rain chances (70-90%) are outlooked across much of the Panhandle today as a result. Current radar imagery is already tracking scattered showers and storms across the Panhandle and Northeast Florida this morning, with coverage and intensity only expected to increase in the daylight hours. Heavy rainfalls already observed in recent days have lowered 1-hr flash flood guidance values across much of the SE U.S.. Given these factors, the Weather Prediction Center has issued a **Slight Risk (level 2 of 4) for Flash Flooding** within the Western Panhandle and a **Marginal Risk (level 1 of 4)** within the Central and Eastern Panhandle regions and portions of Northeast Florida. Here, repeated rounds of **locally heavy downpours** over already saturated soils may lead to instances of **flooding and ponding of water**, especially in urban and poor drainage locations. *Isolated instances of flash flooding cannot be ruled out, especially in the Western Panhandle.* Rainfall amounts will generally add up to near 1-3" for most locations. However, locally higher amounts **upwards of 3-5"** cannot be ruled out in areas that see multiple rounds of heavy downpours. Elsewhere in the state, slow-moving sea breeze showers and storms will develop this afternoon along the I-95 corridor (30-50% chance of rain). A **Marginal Risk (level 1 of 4) for Flash Flooding** is outlooked across Southeast Florida for isolated instances of urban flooding and ponding of water in areas that see locally higher rainfall amounts.

Highs will struggle to climb out of the middle to upper 80s across the Panhandle and Big Bend due to cloud cover and rainfall. Highs will soar into the **lower to middle 90s** elsewhere statewide. Peak afternoon heat indices will top out in the **lower to middle 100s** throughout the Peninsula and a **Heat Advisory** is in effect until 6 PM EDT this afternoon for the Miami/Fort Lauderdale metro region. Tonight, some lingering showers and storms may remain across the Panhandle (40-65%), although with generally less coverage than last night. Any lingering activity along the I-95 corridor will dissipate or move offshore by midnight (15-30% chance of rain). Lows will fall into the middle 70s to lower 80s statewide overnight.



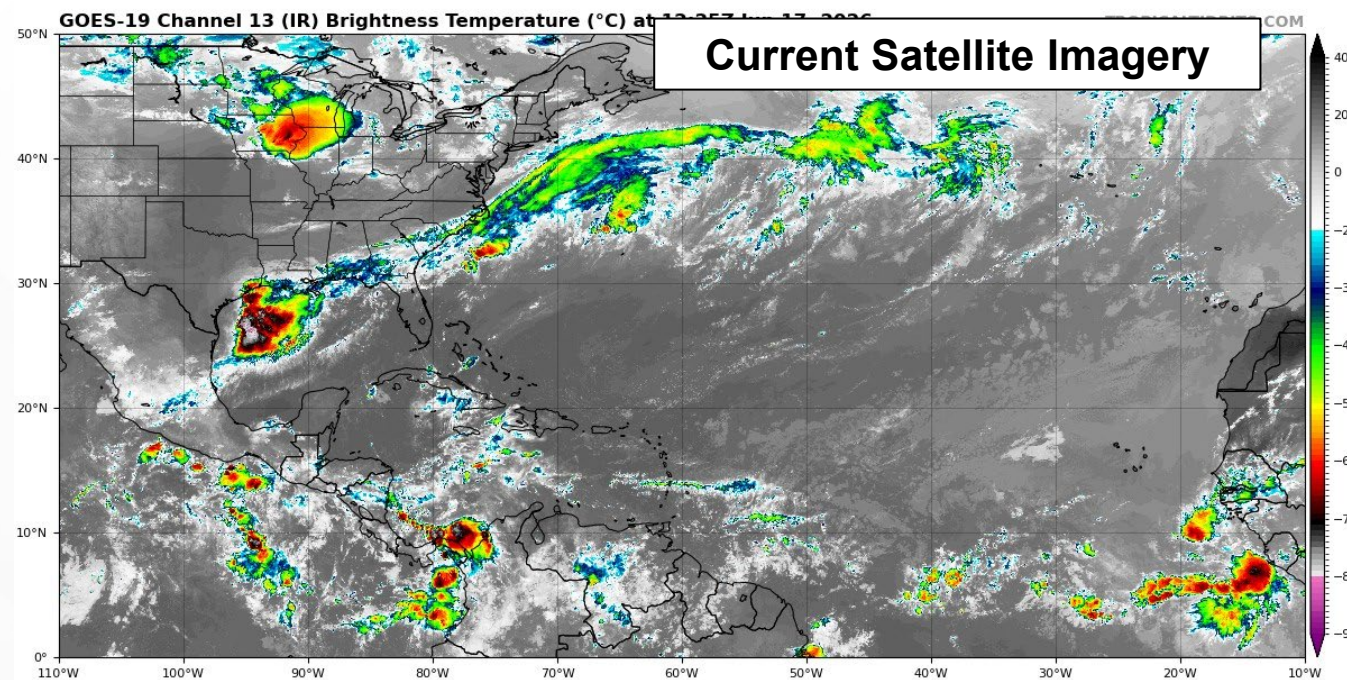
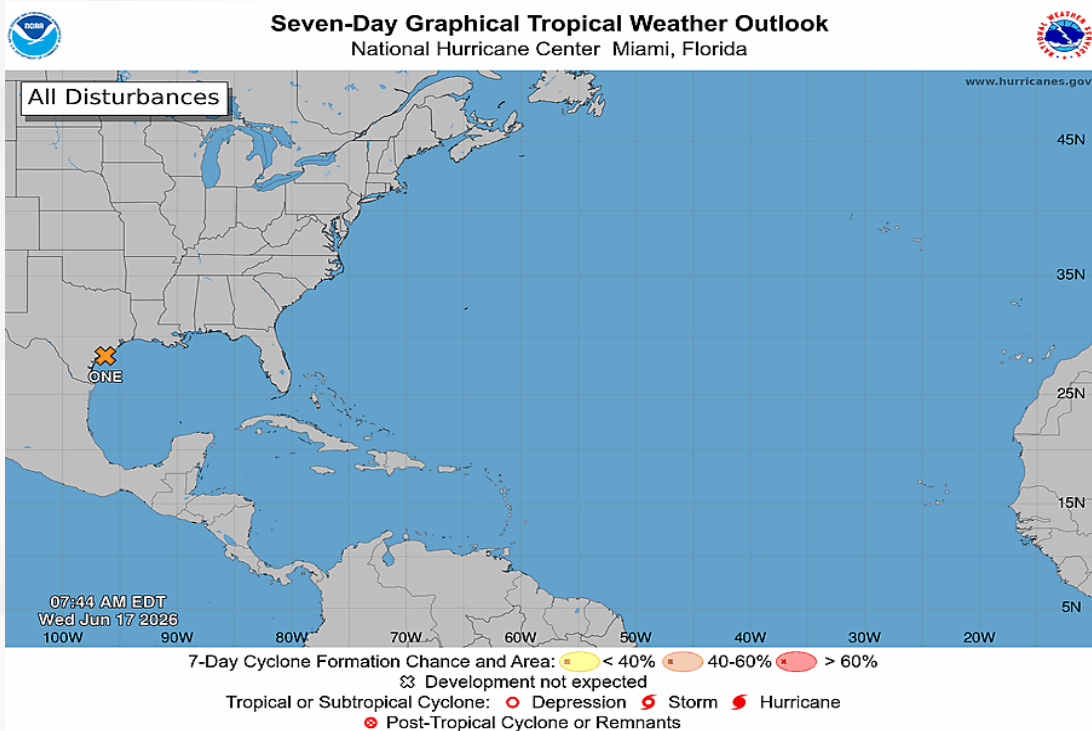


Tropical Weather

For the latest on the tropics, please visit the National Hurricane Center (NHC) at www.hurricanes.gov.

Potential Tropical Cyclone ONE: At 700 AM CDT (1200 UTC), the disturbance was centered near latitude 28.3 North, longitude 96.2 West. The system is moving toward the northeast near 7 mph (11 km/h), and an increase in forward speed is expected today. On the forecast track, the low pressure area should move northeastward along the Texas coast today and then move inland over southwestern Louisiana by tonight. Surface observations indicate the maximum sustained winds are near 30 mph (45 km/h) with higher gusts. Some strengthening is forecast, and the disturbance could become a tropical storm today. Weakening is anticipated once the low moves inland, and it could dissipate by tonight or early Thursday. ***This system poses no direct threat to Florida. However, periods of heavy rainfall will continue daily across portions of the Florida Panhandle and Big Bend this week which may lead to isolated instances of flash, urban, and river flooding.***

- Formation chance through 48 hours... **medium... 60%.**
- Formation chance through 7 days... **medium... 60%.**





Coastal Hazards & Hydrology

Rip Currents: Persistent onshore winds along the Panhandle coast today has resulted in a **moderate to high risk for rip currents**. Stronger onshore winds for West Central Florida will result in a **moderate risk**. Winds shifting to the east has resulted in a **moderate risk** for East Central Florida. For the latest Rip Current Outlook, visit www.weather.gov/beach.

Marine Hazards: Surf will increase this afternoon for Panhandle Beaches, with peak wave heights reaching **2-4'**. A **High Surf Advisory** goes into effect at midnight for Western Panhandle Beaches, where wave heights of **4-6'** are expected. Elsewhere, surf will remain calm at 1-2'.

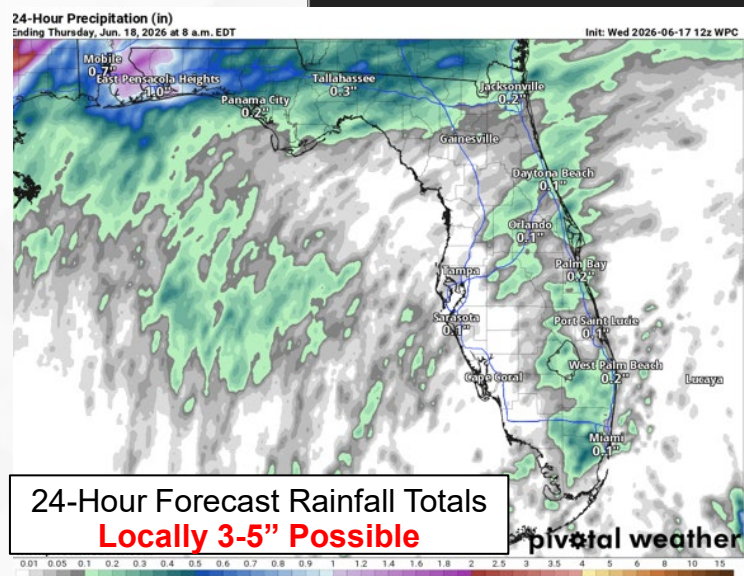
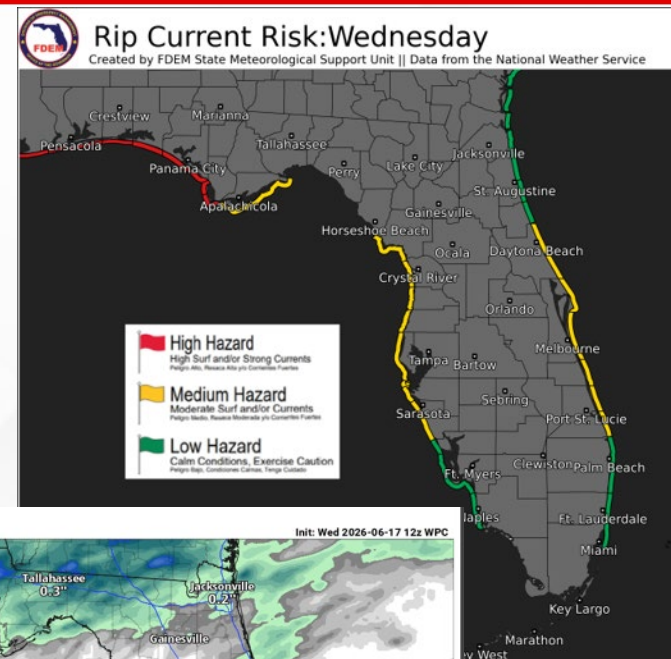
Red Tide: was observed at background concentrations offshore Taylor County over the past week. It was not observed elsewhere across the state (valid 6/12/26).

Coastal Flooding: There are no current coastal flood alerts for the state.

Flash Flooding: A **Slight Risk (level 2 of 4) for Flash Flooding** is outlooked across the Western Panhandle today where rounds of locally heavy showers and thunderstorms may lead to instances of **flooding and ponding of water**, especially in urban and poor-drainage locations. *Isolated instances of flash flooding cannot be ruled out.* Rainfall amounts for the Western Panhandle will be 1-3", although higher totals cannot be ruled out. A **Marginal Risk (level 1 of 4) for Flash Flooding** is outlooked across the Eastern Panhandle, Big Bend, and Southeast Florida where **heavy downpours** may lead to isolated **urban street flooding**. Rainfall amounts will generally remain around 1-2" for most locations along the I-95 corridor and across the Panhandle/Big Bend.

Riverine Flooding: The [Shoal River near Crestview](#), [Big Coldwater Creek near Milton](#), and [Yellow River near Milligan](#) are expected to reach Action Stage (*bank-full*) later this week due to multiple days of heavy rainfall over the water basins. Additional riverine responses are possible across the Panhandle and Big Bend and updates are expected later this week as daily rainfall continues to bring increasing water levels to area rivers, creeks, and streams. For more information, visit the [River Forecast Center](#).

[Lake Okeechobee's](#) average elevation is 11.11 feet, which is within the operational band and is 2.07 feet below normal for this time of year.



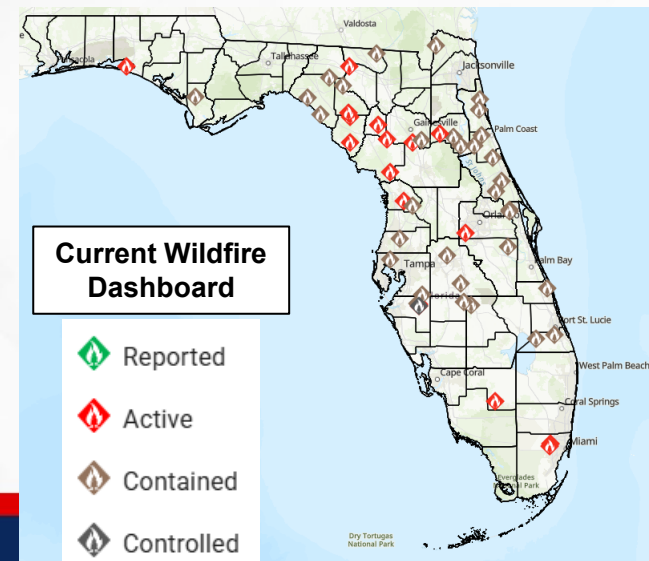
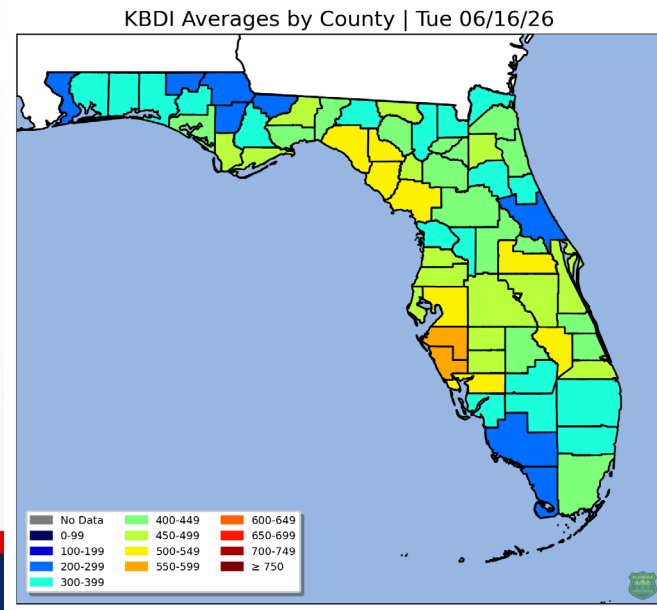
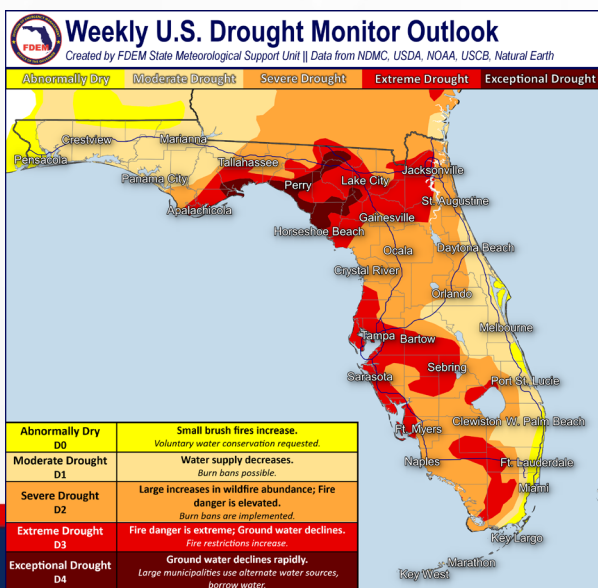


Drought & Fire Weather

Fire Weather: Deep tropical moisture continues to pool across much of North Florida today along and south of a stalled frontal boundary over the Southeast U.S. Isolated to scattered thunderstorms can be expected for the Panhandle today.. Seasonable moisture will reside across the remainder of the Peninsula with sea breeze showers and storms expected to develop along the I-95 corridor. Any of today's thunderstorm activity may be accompanied by lightning and gusty/erratic winds. Recent hot and dry weather combined with long-term drought conditions will promote at least **locally sensitive wildfire conditions** across the Peninsula, especially with the risk of lightning-based ignitions. According to the [Florida Forest Service](#), there are 50 active wildfires across the state burning approximately 12,600 acres.

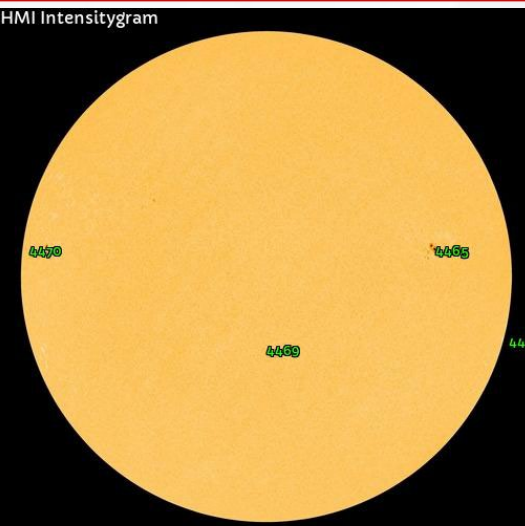
Drought (6/9/26): Additional improvements were made on this week's Drought Monitor update throughout much of the state with the recent wet pattern bringing beneficial rainfall. Across portions of the northern and far western Panhandle, areas of moderate drought have been reduced to abnormally dry (*receding drought*) conditions on this week's update. These areas have seen rainfall departures 8-10 inches above normal since the beginning of May which has quickly brought an end to the worst drought conditions. Many areas in the **severe drought (level 2 of 4)** to **exceptional drought (level 4 of 4)** across the Big Bend and Northeast Florida have also seen one or even two category drought reductions with recent rainfall over the past month. The areas of **exceptional drought (level 4 of 4)** are now found in localized pockets of the Suwannee River Valley and along the Forgotten Coast. The heaviest rainfall in the past 7 days was observed across South Florida and along the I-95 corridor. Many of these areas have also seen one category of drought reduction after receiving 1-3" of rainfall, or more, since last week. Localized pockets of **extreme drought (level 3 of 4)** remain across West Central and interior South Florida due to the scattered nature of recent thunderstorm activity. In general, however, much of the I-75 corridor has been reduced to a **severe drought (level 2 of 4)** with 30-day rainfall departures returning closer to normal or even above normal. Drought conditions along the immediate Southeast Coast continue to lessen with abnormally dry conditions (*receding drought*) expanding. 95% of Florida remains in at least moderate drought, with only ~4% of the state under exceptional drought – a 6% reduction in exceptional drought coverage compared to last week. Looking ahead, a wetter pattern is expected over North Florida, and scattered shower and thunderstorm activity will continue to favor the Peninsula with daily sea breeze activity. Additional drought improvements appears likely.

The **Keetch-Byram Drought Index** average for Florida is **411 (-7)** on a scale from 0 (very wet) to 800 (very dry). There are **10 out of 67** Florida counties that have an average KBDI above 500 (drought/increased fire danger).

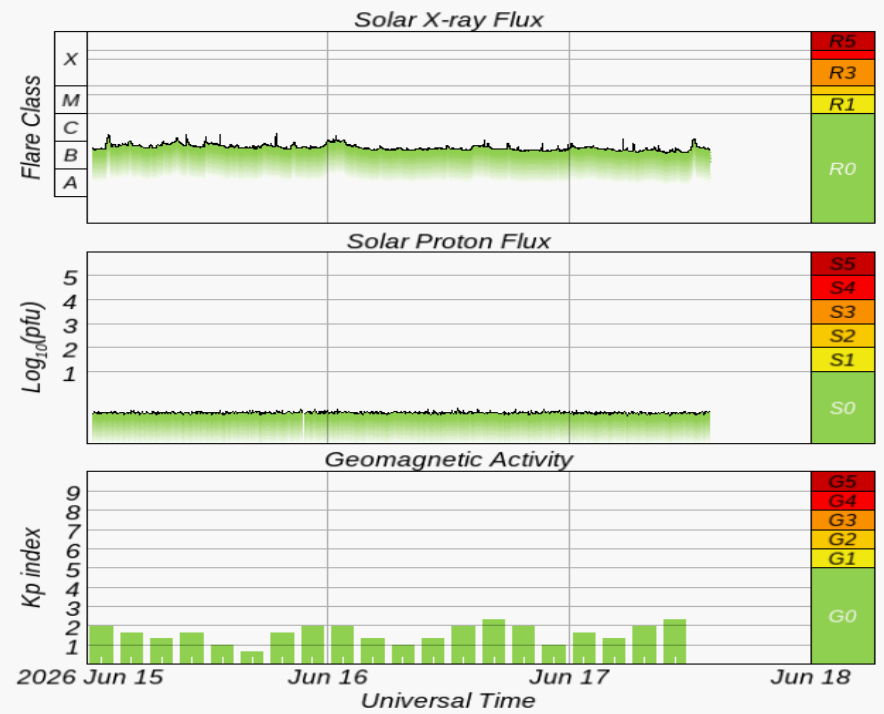




Space Weather

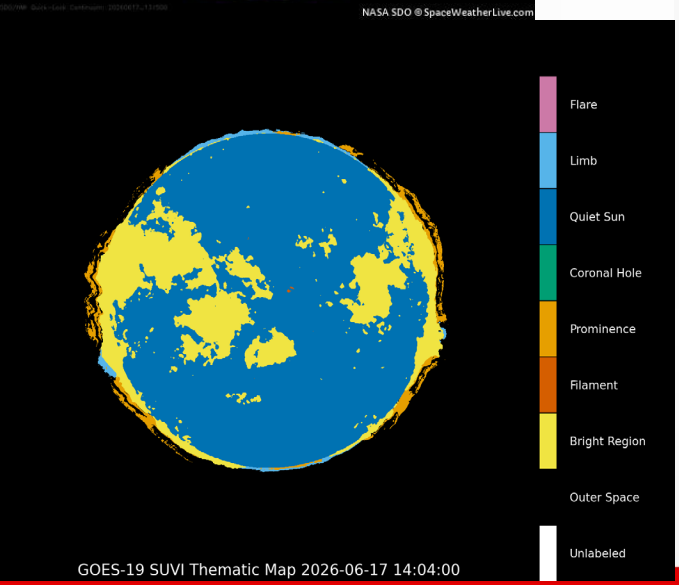


Current Sunspots



Solar Flare Risk	Active Watches & Warnings	Past 24 hours
M-class: 15%	Geomagnetic Storm: None	C1 Solar Flare
X-class: 1%	Radiation Storm: None	No Radio Blackout

48-Hour Geomagnetic Forecast	
6/17	6/18
Max Kp= 4 (G0)	Max Kp= 3 (G0)
Chance of minor activity = 15% severe activity = 1%	Chance of minor activity = 5% severe activity = 1%



Space Weather: Solar activity is expected to remain at low levels through Friday with a slight chance for an M-class flare. Any M-class flares will be accompanied by minor to moderate (R1-R2) radio blackouts. Solar wind conditions are expected to be enhanced starting today due to influences from a coronal hole high speed stream (CH HSS). Periods of unsettled to active geomagnetic storming levels will result. The overall space weather threat to Florida is very low.



SWO Communications Systems & Contact Information

Equipment	Contact	Status	Comments
Phone:	850-815-4001; 800-320-0519; 850-591-0071	Operational	
Fax:	850-815-4979	Operational	
Email:	SWP@em.myflorida.com	Operational	
SWO Tracker:	https://swo.floridadisaster.org	Operational	
SLERS:	DEM Statewide	Operational	
FNARS:	WGY974	Not Operational	System in Transition
Federal NAWAS:	State Watch Office	Not Operational	System in Transition
EMnet Message:	FL.000 - State Watch Office	Not Operational	System in Transition
EMnet Voice:	FL SWP - State Watch Office	Not Operational	System in Transition
IPAWS:	300006 - FL Florida Division of Emergency Management	Operational	
FIN:	SOFEOC	Not Operational	System in Transition
Satellite Phones:	MSAT 888-890-5178; Iridium 480-263-8838	Operational	
Website:	https://floridadisaster.org	Operational	

Users wishing to subscribe (approval pending) to this distribution list, register at:

https://public.govdelivery.com/accounts/FLDEM/subscriber/new?topic_id=Morning_SITREP