



Florida Division of Emergency Management State Watch Office

Morning Situation Report

Sunday, June 7, 2026



State Emergency Operations Center Activation Level

Level 2: Partial Activation



SERT On-Call Personnel

Position	Personnel	Phone	Email
Operations Chief	Amy Godsey	(850) 519-8483	Amy.Godsey@em.myflorida.com
Watch Officer	Woody Harvey	(850) 591-7939	Woodham.Harvey@em.myflorida.com
Duty Officer	Jeremy Whitt	(850) 755-8521	Jeremy.Whitt@em.myflorida.com
Operations Officer- Day	Joel Lalog	(850) 815-4001	SWP@em.myflorida.com
Operations Officer- Swing	Ian Danley	(850) 815-4001	SWP@em.myflorida.com
Operations Officer- Night	Daniel Leader	(850) 815-4001	SWP@em.myflorida.com
Meteorologist	Amy Godsey	(850) 519-8483	Amy.Godsey@em.myflorida.com
Plans Chief	Kaylynn Perry	(850) 254-5657	Plans_Command@em.myflorida.com
Logistics Chief	Christina Goetzman	(850) 519-8581	Christina.Goetzman@em.myflorida.com
Human Services Branch Director	Pam Hughes	(850) 528-5638	Pamela.Hughes@em.myflorida.com
Emergency Services Branch Director	Tim Kenyon	(850) 591-7732	Tim.Kenyon@em.myflorida.com
Infrastructure Branch Director	Paige Lay	(850) 591-9933	Paige.Lay@em.myflorida.com
ESF 8: Health & Medical On-Call	Brandon Gore	(866) 786-4673	DLDOHDutyOfficers@flhealth.gov
ESF 14: Public Information Officer	Stephanie Hartman	(850) 570-3053	Stephanie.Hartman@em.myflorida.com
Finance Chief	Jeremy Smith	(850) 273-1273	Jeremy.Smith@em.myflorida.com



Response Regional Coordination Team



Team	County Location	Visits
Region 1: Jim Roberts	In Region	On-Call Status
Region 2: Enrique Gaston	Out of Service	Leave (See Coverage)
Region 3: Glen Hammers	In Region	On-Call Status
Region 4: Tara Kostich	In Region	On-Call Status
Region 5: Austin Beeghly	In Region	On-Call Status
Region 6: Paul Siddall	In Region	On-Call Status
Region 7: Vacant	N/A	N/A (See Coverage)
Region 8: Amber Durden	In Region	On-Call Status
Region 9: Brittany Bremer	In Region	On-Call Status
Region 10: Claudia Baker	Miami-Dade	City of Hialeah Hurricane Expo

Region 2 Coverage Provided By Response Coordinator 1
 Region 7 Coverage Provided By Response Coordinator 6, 8, 9

Status
Normal Operations
Out of Service / Unavailable



Recovery Regional Coordination Team

Team	County Location	Status / Activities
Region 1: Allison Blevins	In Region	Off & Monitoring
Region 2: Justin Lazzara	Out of Service	Leave (See Coverage)
Region 3: Kevin Blom	In Region	Off & Monitoring
Region 4: Joshua Saunders	In Region	Off & Monitoring
Region 5: Elizabeth Caison	In Region	Off & Monitoring
Region 6: Rick Rogers	In Region	Off & Monitoring
Region 7: Vacant	N/A	N/A (See Coverage)
Region 8: Ja-Pheth Butler-Miller	In Region	Off & Monitoring
Region 9: Vacant	N/A	N/A (See Coverage)
Region 10: Brian Lee	In Region	Off & Monitoring

Region 2 Coverage Provided By Recovery Coordinator 3

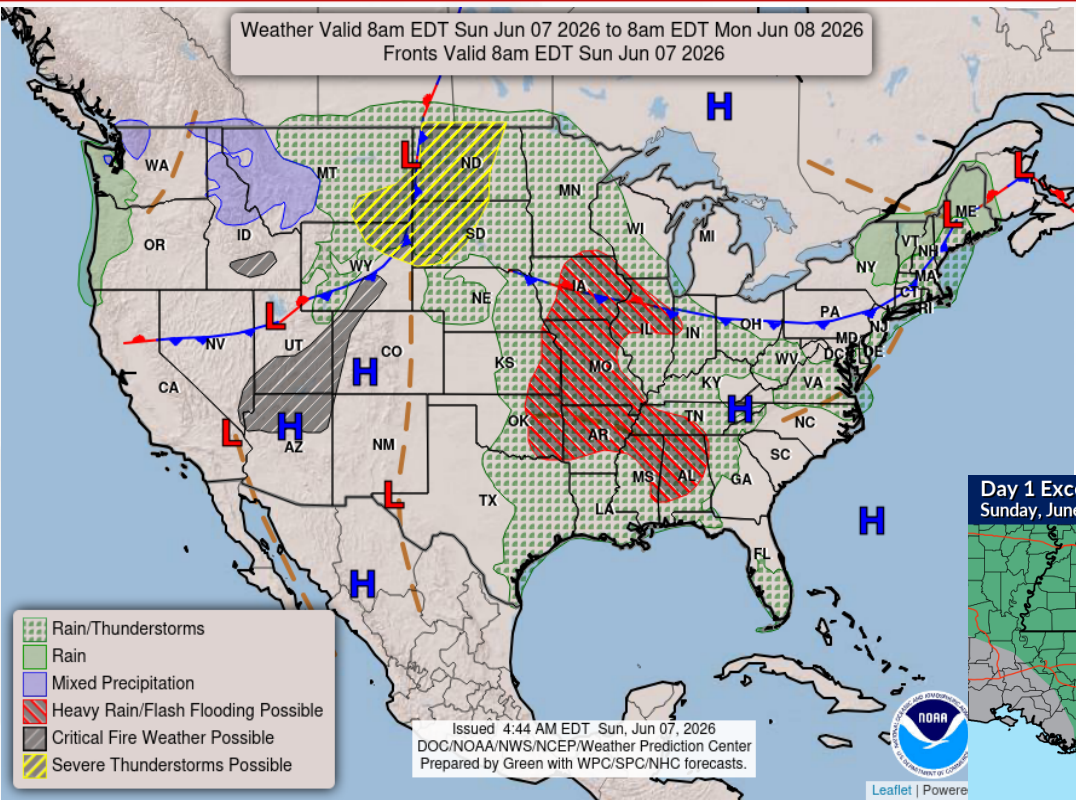
Region 7 Coverage Provided By Recovery Coordinator 6 & Recovery RC Supervisor

Region 9 Coverage Provided By Recovery Coordinator 6 & Recovery RC Supervisor

Status
Normal Operations
In Region / Delayed Response
Deployed / Delayed Response
Out of Service / Unavailable

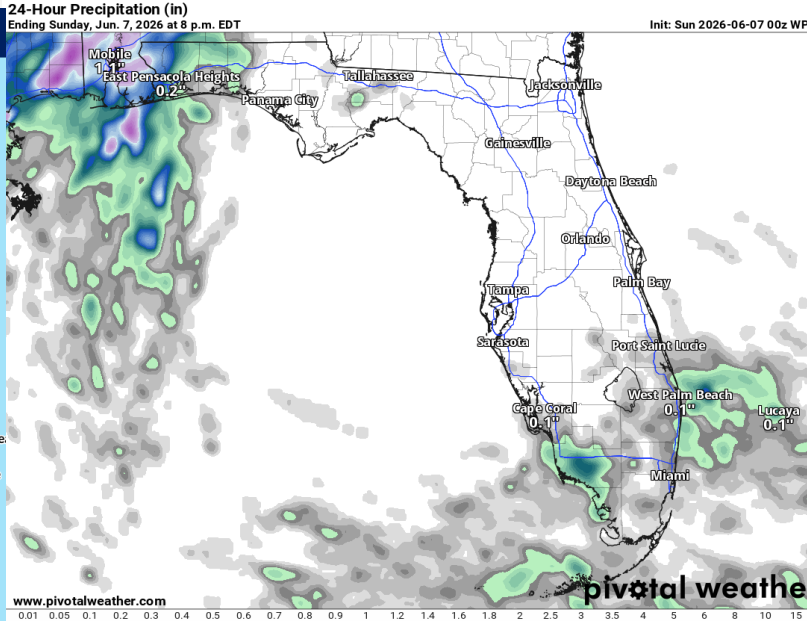
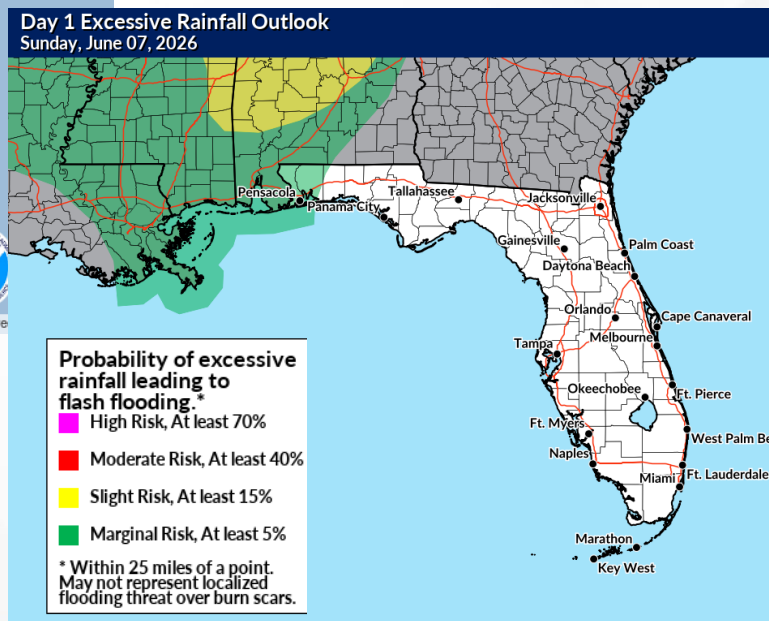


Meteorology Summary



Today's Weather Map

Threat	R1	R2	R3	R4	R5	R6	R7	R8	R9	R10
Lightning	L							L	L	L
Tornado										
Damaging Wind										
Hail										
Flash Flooding	L									
Extreme Heat									L	L
Fog (Overnight)										
Wildfire	L	L	L	L	L	L				
Rip Currents	H	H	L	M	M	L		H	L	H
Lake Okeechobee Elevation	11.18 ft. (1.95 ft. Below Normal)									
Keetch-Byram Drought Index	363 (+14) on a scale from 0 (very moist) to 800 (very dry)									





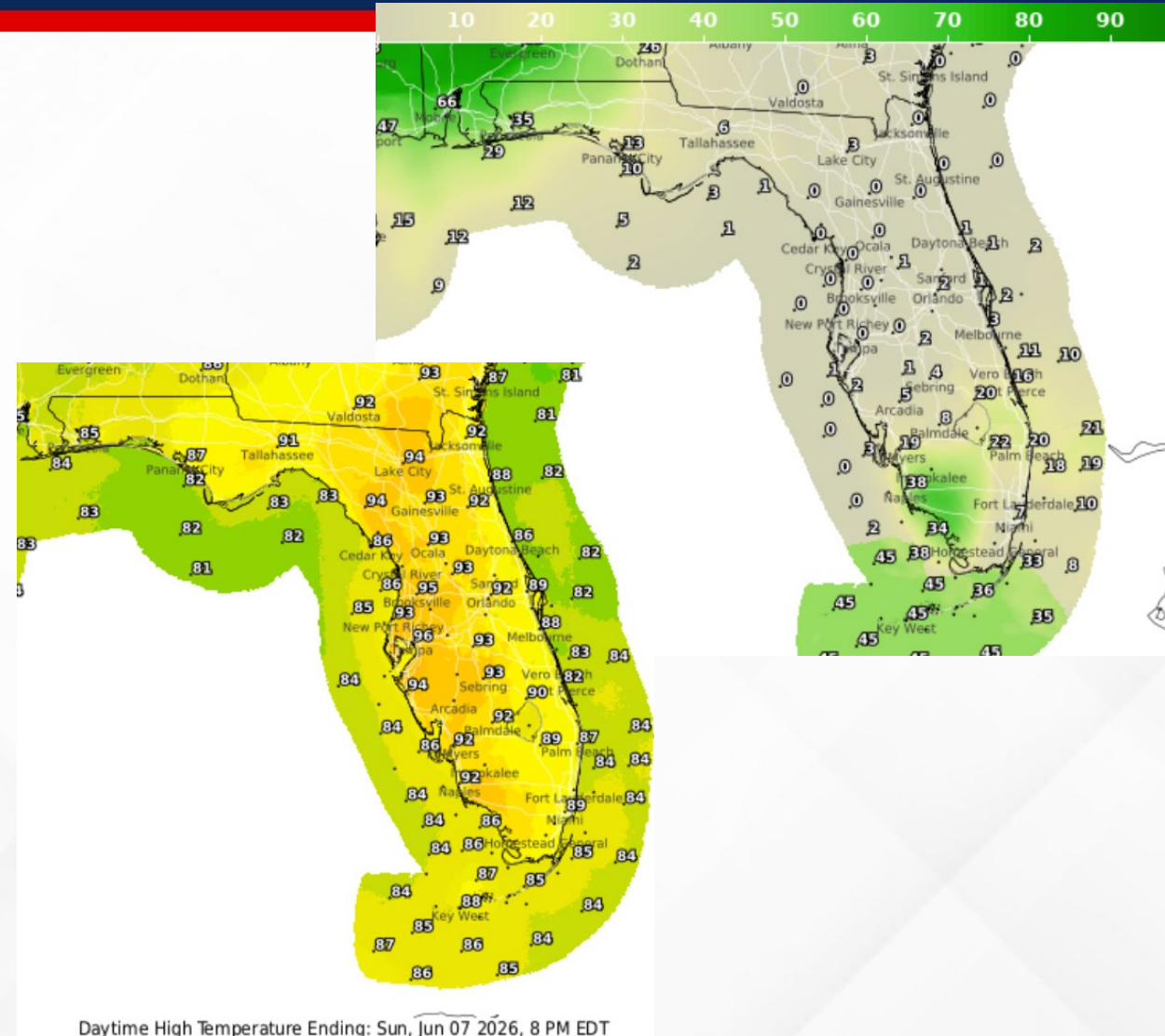
Meteorology Summary

Statewide Overview, Next 24 Hours:

Weather conditions across the State today will be similar to Saturday as high pressure remains in place in the region. Hot and dry will continue today for the majority of the state. However, some slight moisture may be pushed across South Florida, the Florida Keys and the western Panhandle to allow for a slight chance (20-40%) of rain to occur throughout the day. Some of the storms across the western Panhandle today may contain heavy rainfall, and a **Marginal Risk (level 1 of 4) for Flash Flooding** is possible across Escambia and Santa Rosa counties. Current rainfall forecasts are generally around 1' across Escambia and Santa Rosa counties, but some isolated totals of **2-3'** appear possible.

High temperatures across most of the state today will be in the **upper 80s to mid 90s**. Although relative humidity values are somewhat low in the 30-50% range across North and Central Florida, higher humidity levels across South Florida will allow **heat index values** to reach the **upper 90s to low 100s** this afternoon. Across North and Central Florida, heat indices should be in the mid 90s, but the lower humidity will also increase the fire danger.

Any rain that occurs today will wane after sunset. Low temperatures overnight will generally be in upper 60s to low 70s inland and in the mid to upper 70s at the coast.





Coastal Hazards & Hydrology

Rip Currents: Elevated onshore winds will continue a **high risk for rip currents** for most Panhandle and all Southeast beaches today. A **moderate risk for rip currents** is expected for Central and Northeast Coast Beaches today where onshore flow is comparatively weaker. A low risk remains in effect for all West Coast beaches. For the latest Rip Current Outlook, visit www.weather.gov/beach.

Marine Hazards: Surf will be at 1-3' statewide today.

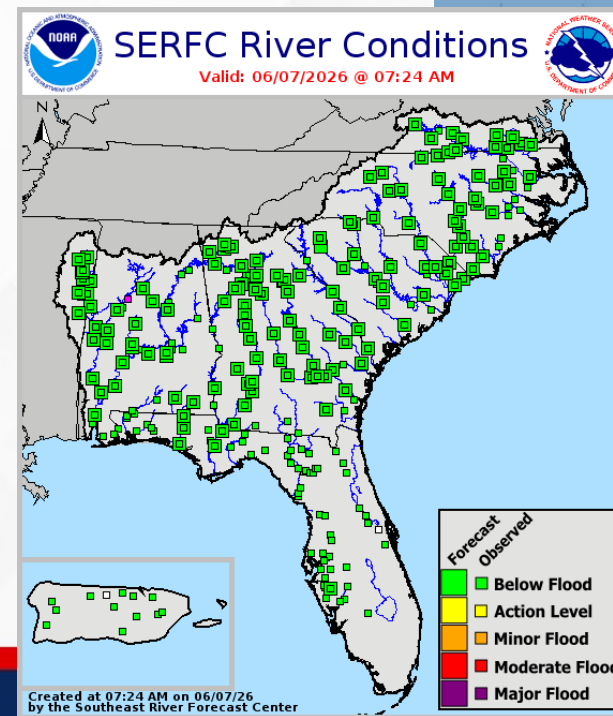
Red Tide was observed at background concentrations in Pinellas County over the past week. It was not observed elsewhere across the state (valid 6/5/26).

Coastal Flooding: There is no risk for coastal flooding today.

Flash Flooding: A **Marginal Risk (level 1 of 4) for Flash Flooding** is outlooked for portions of the extreme Western Panhandle today. Current rainfall forecasts are generally around 1' across Escambia and Santa Rosa counties, but some isolated totals of **2-3'** appear possible.

Riverine Flooding: No riverine flooding has occurred or is forecast to occur. All gauges previously in a flood stage from last week's rains have since fallen below action stage. For more information, visit the [River Forecast Center](#).

Lake Okeechobee's average elevation is 11.18 feet, which is within the operational band and is 1.95 feet below normal for this time of year.



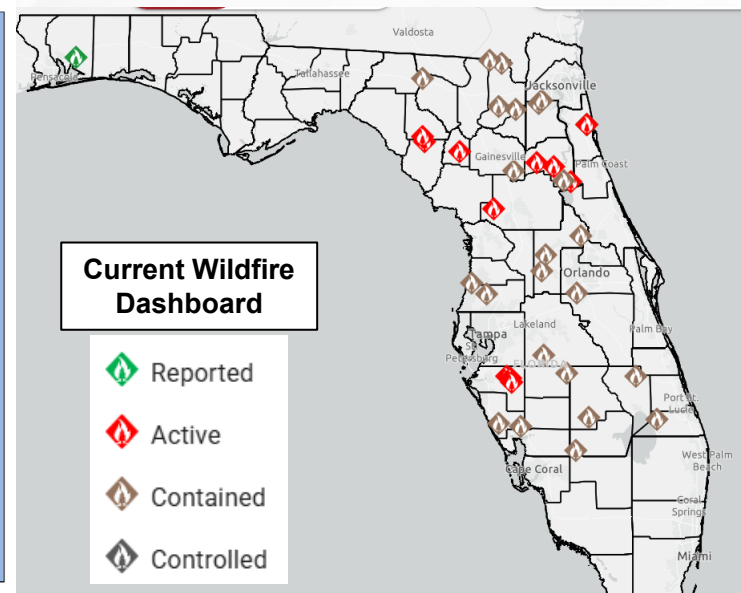
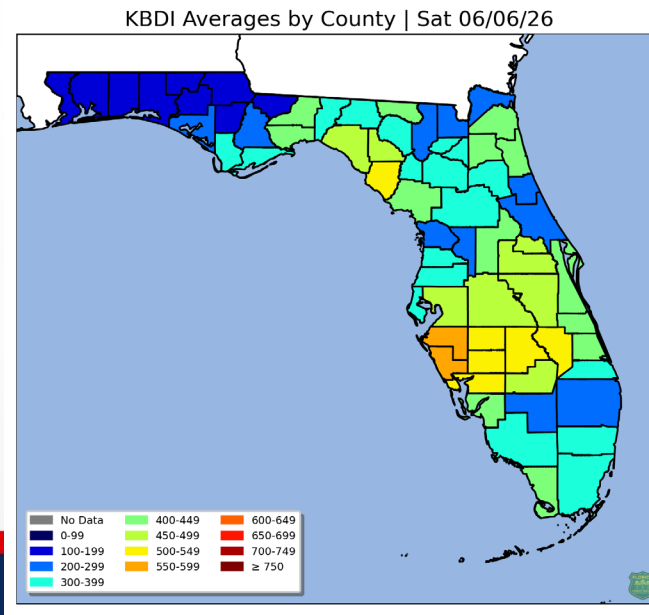
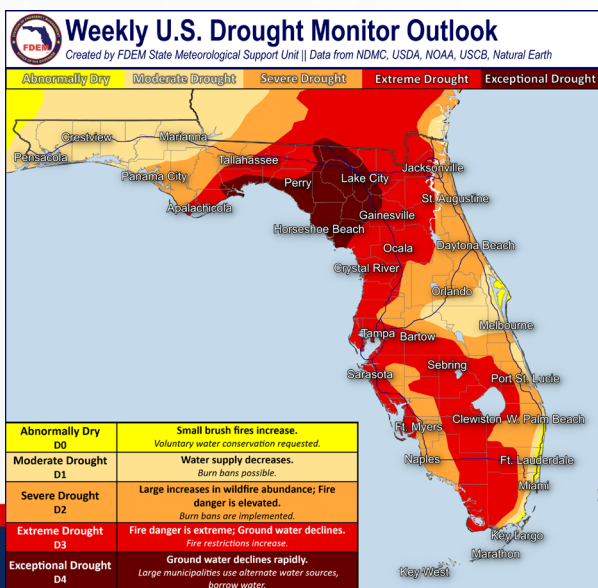


Drought & Fire Weather

Fire Weather: Little to no rainfall is expected across much of the state today as dry air and high pressure act to suppress storm activity. Afternoon minimum relative humidities will be low across North and Central FL at around 35-50% but should stay above critical thresholds. Winds will be out of the east/southeast today, with gusts of <15mph expected. These features should all promote at least **sensitive** fire weather conditions today (mostly for the northern half of the state where humidities are lowest) with the main limiting factors being saturated soils from recent rounds of heavy rainfall and weak transport winds. According to the [Florida Forest Service](#), there are 36 active wildfires across the state burning approximately 7,354 acres.

Drought (6/2/26): Notable improvements were made on this week's Drought Monitor update. In the Panhandle where the highest rainfall totals (4-6") were observed last week, the existing **severe drought (level 2 of 4)** west of the Apalachicola River was reduced to a moderate drought (level 1 of 4). The **extreme drought (level 3 of 4)** across portions of the eastern Panhandle and western Big Bend was reduced to a **severe drought (level 2 of 4)**. The bounds of the **exceptional drought (level 4 of 4)** area were trimmed, reducing portions of the Big Bend and Suwannee Valley to a **severe drought (level 3 of 4)**, and the area of **extreme drought (level 3 of 4)** was reduced to a **severe drought (level 2 of 4)** along coastal Northeast Florida. 99% of Florida remains in at least a moderate drought, with 10% of the state (Big Bend and North-Central Florida) in an exceptional drought - a 7% reduction in exceptional drought coverage compared to last week.

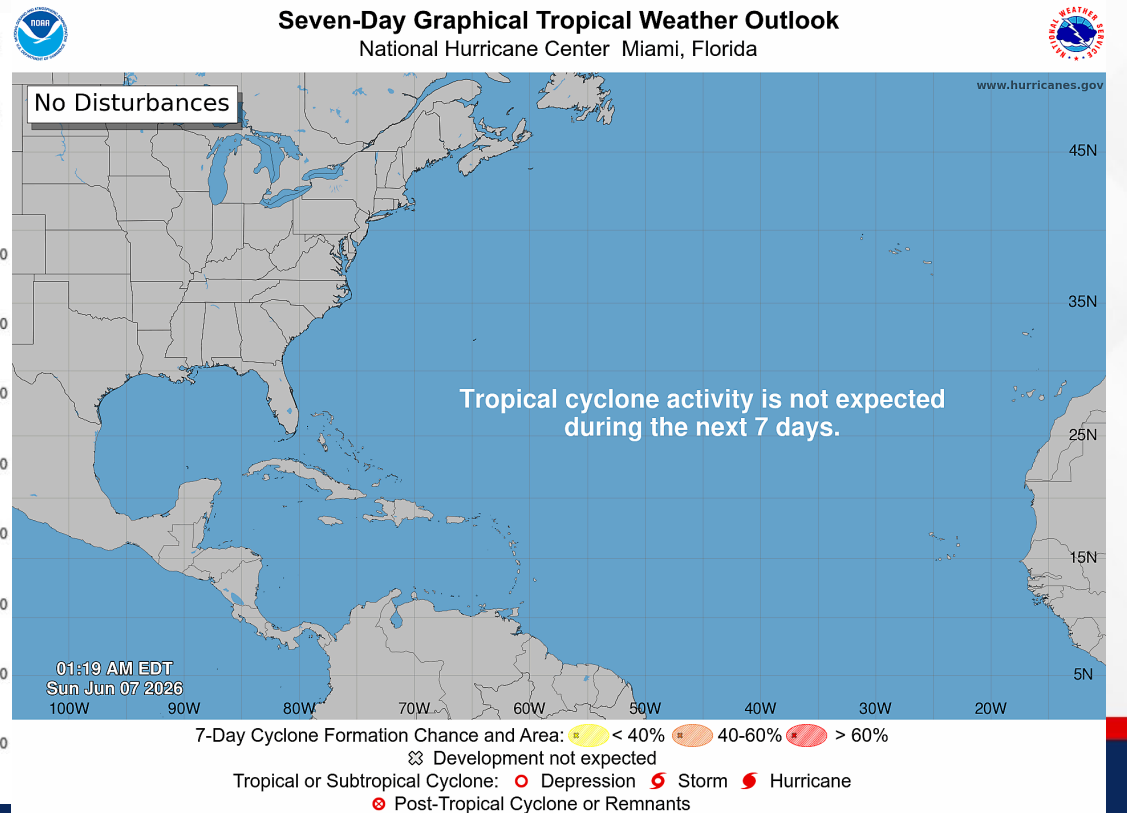
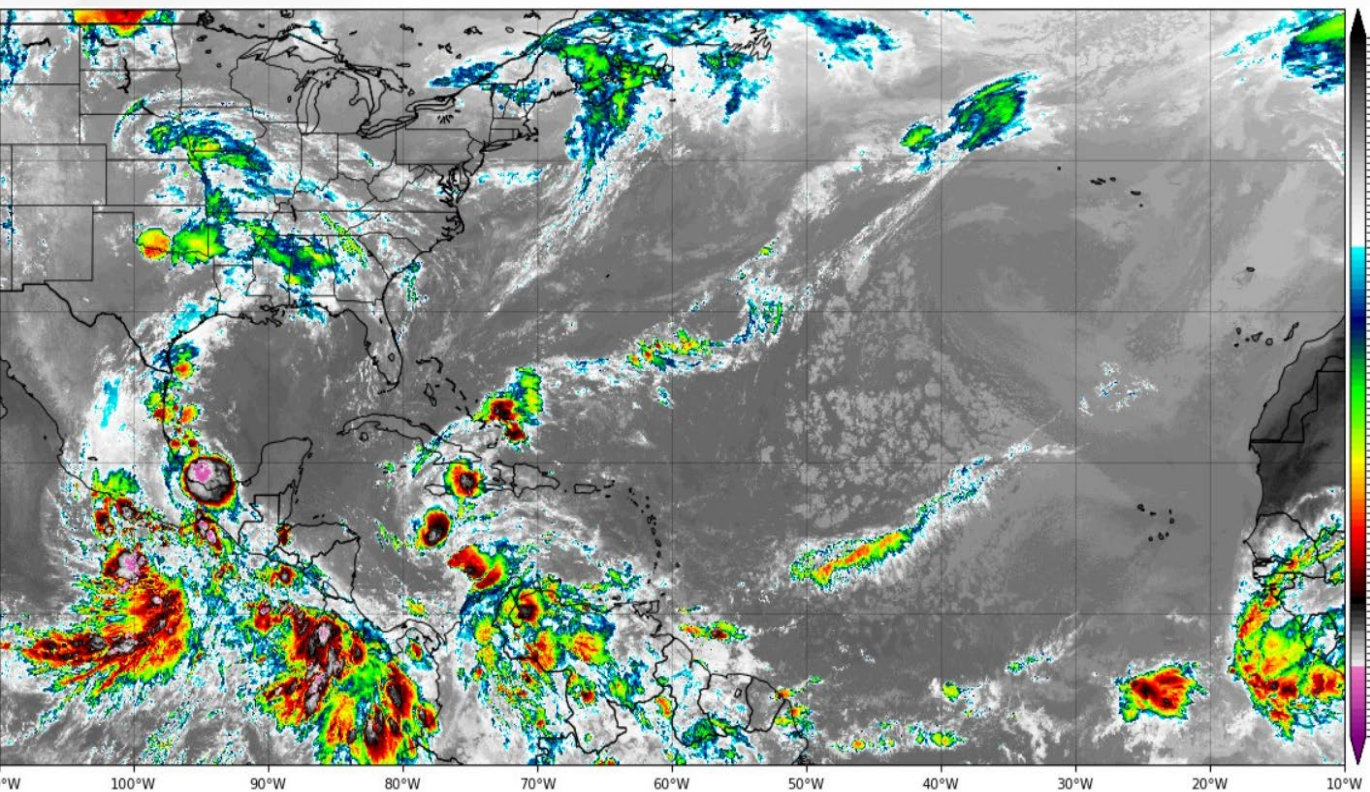
The **Keetch-Byram Drought Index** average for Florida is **363 (+14)** on a scale from 0 (very wet) to 800 (very dry). There are **7 out of 67** Florida counties that have an average KBDI above 500 (drought/increased fire danger).





Tropical Outlook

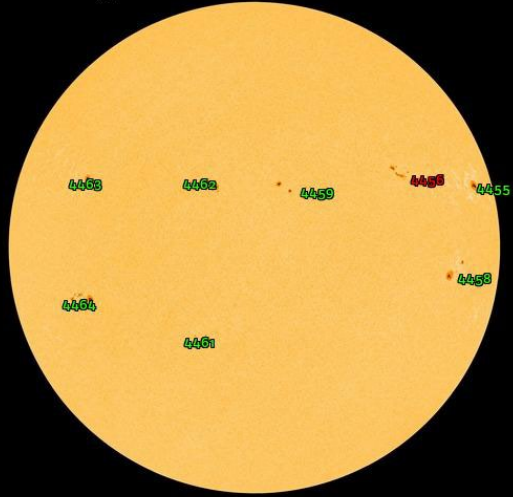
Tropics: A few tropical waves are located in the eastern and central Caribbean Sea, as well as near the Yucatan Peninsula. However, none of these are expected to develop into tropical systems within the next 7 days. For the latest storm information, visit hurricanes.gov.



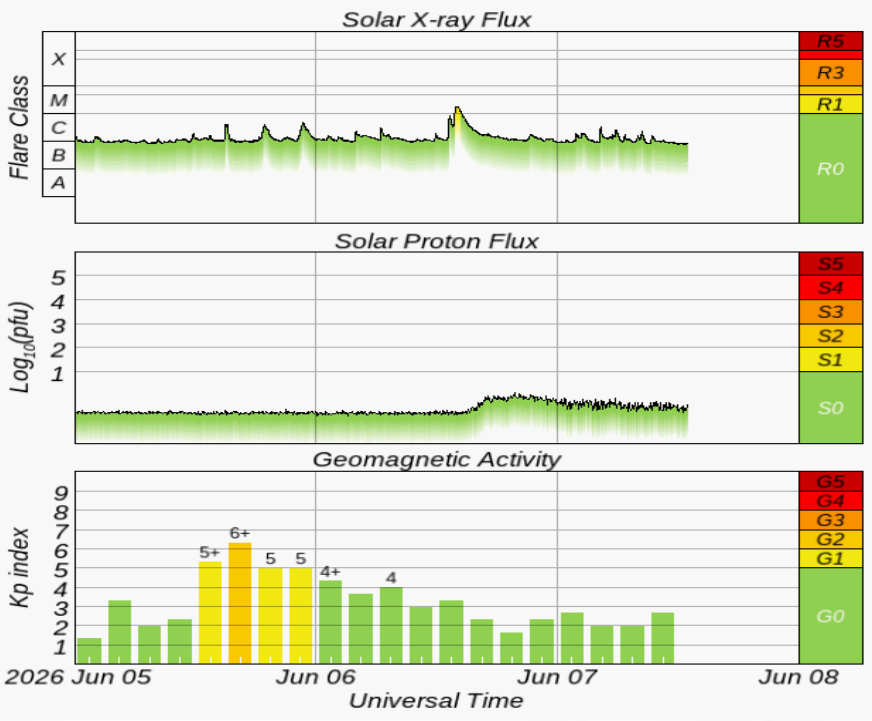


Space Weather

HMI Intensitygram

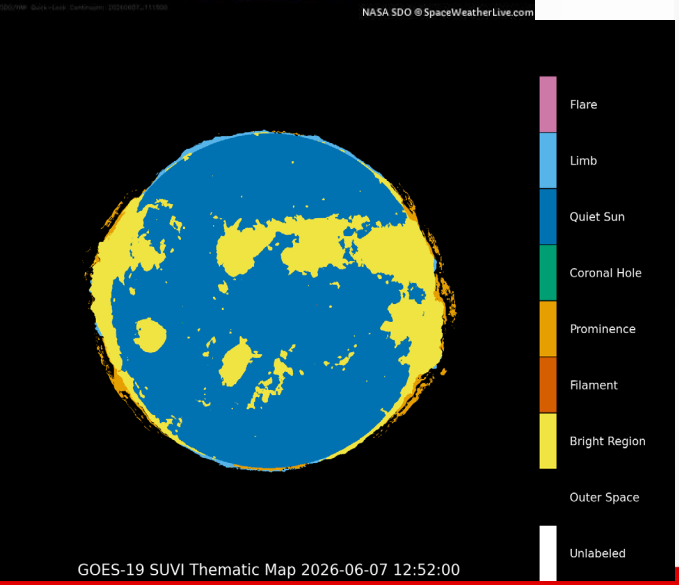


Current Sunspots



Solar Flare Risk	Active Watches & Warnings	Past 24 hours
M-class: 55%	Geomagnetic Storm: Yes (G3)	M1 Solar Flare
X-class: 10%	Radiation Storm: None	R1 Radio Blackout

48-Hour Geomagnetic Forecast	
6/7	6/8
Max Kp= 4 (G0)	Max Kp= 7 (G3)
Chance of minor activity = 5% severe activity = 1%	Chance of minor activity = 35% severe activity = 50%



Space Weather: Solar activity is expected to remain at unsettled levels with a high chance for solar flares accompanied by minor to moderate (R1-R2) radio blackouts. Sunspot 4461 produced a strong solar flare yesterday along with a subsequent Coronal Mass Ejections (CMEs). This CME is expected to reach Earth on June 8 with minor/moderate geomagnetic storming at high latitudes. The overall space weather threat to Florida is low.



SWO Communications Systems & Contact Information

Equipment	Contact	Status	Comments
Phone:	850-815-4001; 800-320-0519; 850-591-0071	Operational	
Fax:	850-815-4979	Operational	
Email:	SWP@em.myflorida.com	Operational	
SWO Tracker:	https://swo.floridadisaster.org	Operational	
SLERS:	DEM Statewide	Operational	
FNARS:	WGY974	Not Operational	System in Transition
Federal NAWAS:	State Watch Office	Not Operational	System in Transition
EMnet Message:	FL.000 - State Watch Office	Not Operational	System in Transition
EMnet Voice:	FL SWP - State Watch Office	Not Operational	System in Transition
IPAWS:	300006 - FL Florida Division of Emergency Management	Operational	
FIN:	SOFEOC	Not Operational	System in Transition
Satellite Phones:	MSAT 888-890-5178; Iridium 480-263-8838	Operational	
Website:	https://floridadisaster.org	Operational	

Users wishing to subscribe (approval pending) to this distribution list, register at:

https://public.govdelivery.com/accounts/FLDEM/subscriber/new?topic_id=Morning_SITREP