



# **Florida Division of Emergency Management State Watch Office**

## **Morning Situation Report**

Saturday, September 13, 2025



# State Emergency Operations Center Activation Level

Level 2 Activation



# SERT On-Call Personnel

| Position                       | Personnel          | Phone          | Email  |
|--------------------------------|--------------------|----------------|--|
| Operations Chief               | Amy Godsey         | (850) 519-8483 | <a href="mailto:Amy.Godsey@em.myflorida.com">Amy.Godsey@em.myflorida.com</a>                 |
| Watch Officer                  | Sam Walters        | (850) 519-8638 | <a href="mailto:Sam.Walters@em.myflorida.com">Sam.Walters@em.myflorida.com</a>               |
| Duty Officer                   | Jay Griffin        | (850) 524-4094 | <a href="mailto:Kellen.Griffin-Jay@em.myflorida.com">Kellen.Griffin-Jay@em.myflorida.com</a> |
| Operations Officer- Day        | Ahnaya Benjamin    | (850) 815-4001 | <a href="mailto:SWP@em.myflorida.com">SWP@em.myflorida.com</a>                               |
| Operations Officer- Swing      | Zachary Remante    | (850) 815-4001 | <a href="mailto:SWP@em.myflorida.com">SWP@em.myflorida.com</a>                               |
| Operations Officer- Night      | Matthew Peloso     | (850) 815-4001 | <a href="mailto:SWP@em.myflorida.com">SWP@em.myflorida.com</a>                               |
| Meteorologist                  | Evan Newman        | (850)-241-5606 | <a href="mailto:Evan.Newman@em.myflorida.com">Evan.Newman@em.myflorida.com</a>               |
| Plans Chief                    | Kaylynn Perry      | (850) 254-5657 | <a href="mailto:Plans_Command@em.myflorida.com">Plans_Command@em.myflorida.com</a>           |
| Logistics Chief                | Christina Goetzman | (850) 519-8581 | <a href="mailto:Christina.Goetzman@em.myflorida.com">Christina.Goetzman@em.myflorida.com</a> |
| Human Services Director        | Pam Hughes         | (850) 528-5638 | <a href="mailto:Pamela.Hughes@em.myflorida.com">Pamela.Hughes@em.myflorida.com</a>           |
| Emergency Services             | Tim Kenyon         | (850) 591-7732 | <a href="mailto:Tim.Kenyon@em.myflorida.com">Tim.Kenyon@em.myflorida.com</a>                 |
| Infrastructure Branch Director | Paige Lay          | (850) 591-9933 | <a href="mailto:paige.lay@em.myflorida.com">paige.lay@em.myflorida.com</a>                   |
| ESF 8 On-Call                  | Brandon Gore       | (866) 786-4673 | <a href="mailto:DLDOHDutyOfficers@flhealth.gov">DLDOHDutyOfficers@flhealth.gov</a>           |
| Public Information Officer     | Stephanie Hartman  | (850) 570-3053 | <a href="mailto:Stephanie.Hartman@em.myflorida.com">Stephanie.Hartman@em.myflorida.com</a>   |
| DEM Finance and Admin          | Jeremy Smith       | (850) 273-1273 | <a href="mailto:Jeremy.Smith@em.myflorida.com">Jeremy.Smith@em.myflorida.com</a>             |



# Response Regional Coordination Team

| Team                         | County Location | Visits               |
|------------------------------|-----------------|----------------------|
| Region 1: Jim Roberts        | Walton          | Preparedness Event   |
| Region 2: Enrique Gaston     | In Region       | On-Call Status       |
| Region 3: Glen Hammers       | Out of Service  | Leave (See Coverage) |
| Region 4: Tara Kostich       | In Region       | On-Call Status       |
| Region 5: Austin Beeghly     | In Region       | On-Call Status       |
| Region 6: Paul Siddall       | In Region       | On-Call Status       |
| Region 7: Kathryn Hollenbeck | In Region       | On-Call Status       |
| Region 8: Vacant             | N/A             | N/A                  |
| Region 9: Vacant             | N/A             | N/A                  |
| Region 10: Claudia Baker     | In Region       | On-Call Status       |



Region 3 Coverage Provided by Response Coordinator 4  
Region 8 Coverage Provided by Recovery Coordinator 8  
Region 9 Coverage Provided by Recovery Coordinator 9

| Status                       |
|------------------------------|
| Normal Operations            |
| Out of Service / Unavailable |



# Recovery Regional Coordination Team

| Team                             | County Location | Status / Activities           |
|----------------------------------|-----------------|-------------------------------|
| Region 1: Allison Blevins        | Walton          | Build-a-Bucket Outreach Event |
| Region 2: Justin Lazzara         | In Region       | Off & Monitoring              |
| Region 3: Amber Durden           | In Region       | Off & Monitoring              |
| Region 4: Joshua Saunders        | In Region       | Off & Monitoring              |
| Region 5: Elizabeth Caison       | In Region       | Off & Monitoring              |
| Region 6: Rick Rogers            | In Region       | Off & Monitoring              |
| Region 7: Antonio Zapata         | In Region       | Off & Monitoring              |
| Region 8: Ja-Pheth Butler-Miller | In Region       | On-call Coverage for R8       |
| Region 9: Jacob Ginsberg         | In Region       | On-call Coverage for R9       |
| Region 10: Vacant                | N/A             | See Coverage                  |

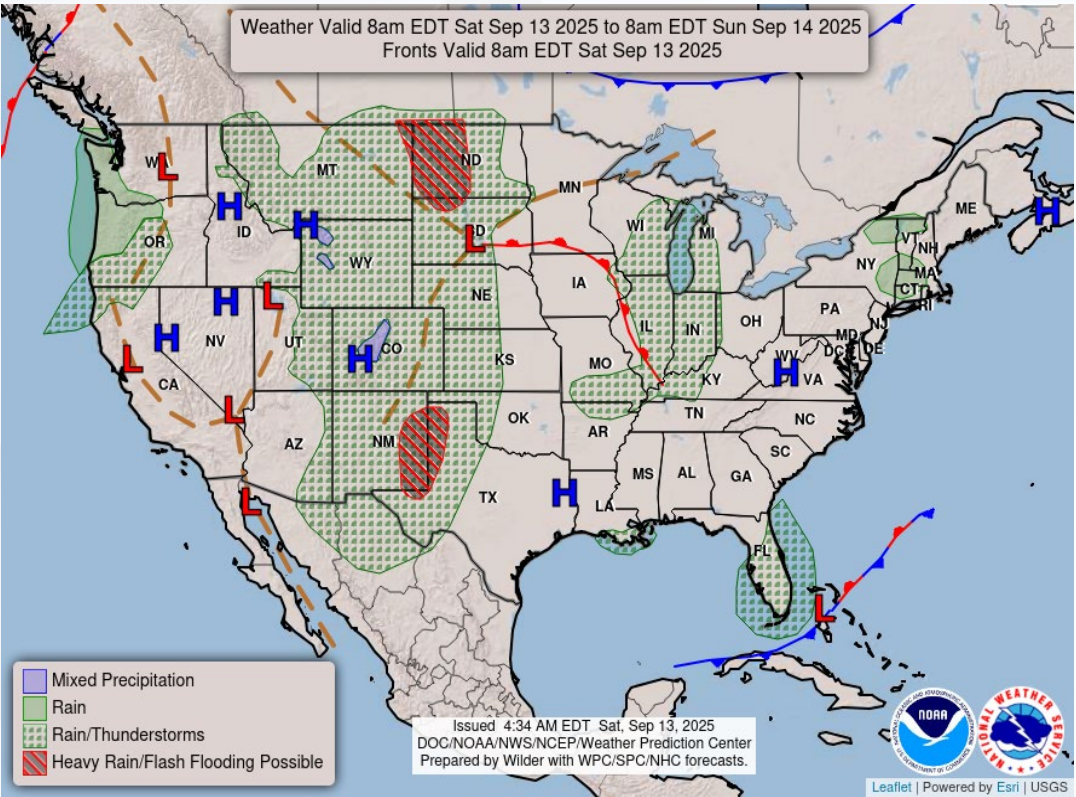
Region 10 Coverage Provided by Recovery Coordinator 8

| Status                       |
|------------------------------|
| Normal Operations            |
| In Region / Delayed Response |
| Deployed / Delayed Response  |
| Out of Service / Unavailable |



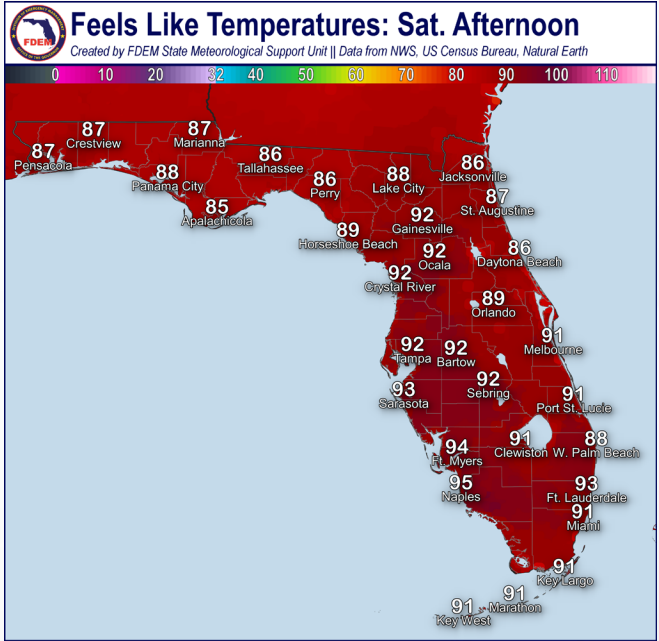
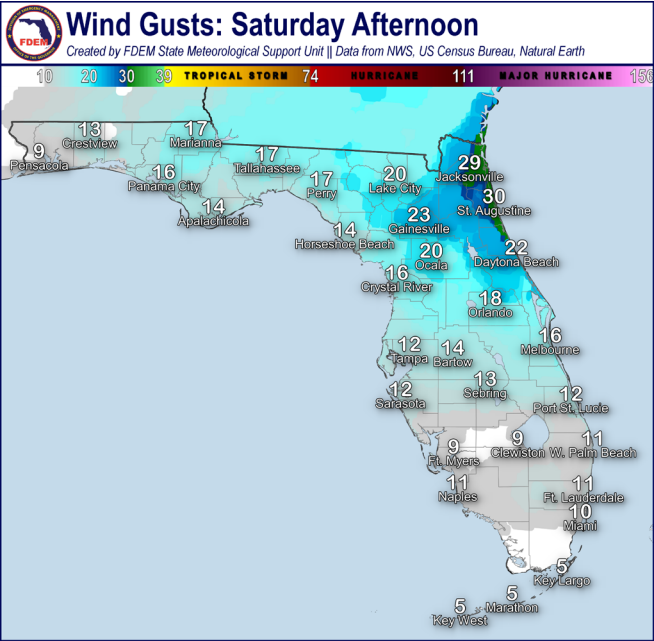


# Meteorology Summary



Today's Weather Map

| Threat                     | R1  | R2 | R3 | R4 | R5 | R6 | R7 | R8 | R9 | R10 |
|----------------------------|---|----|----|----|----|----|----|----|----|-----|
| Lightning                  |   |    |    | L  | M  | L  | M  | M  | M  | H   |
| Tornado                    |   |    |    |    |    |    |    |    |    |     |
| Damaging Wind              |   |    |    |    | L  | L  | L  | L  | L  | L   |
| Hail                       |   |    |    |    |    |    |    |    |    |     |
| Flash Flooding             |   |    |    |    |    |    |    | L  | L  | L   |
| Excessive Heat             |   |    |    |    |    |    |    |    |    |     |
| Wildfire                   | L   | L  |    |    |    |    |    |    |    |     |
| Fog (Overnight)            | L   | L  |    |    |    |    |    |    |    |     |
| Rip Currents               | M   | M  | L  | H  | H  | L  |    | H  | L  | L   |
| Lake Okeechobee Elevation  | 12.90 ft. (1.59 ft. <u>Below Normal</u> )                 |    |    |    |    |    |    |    |    |     |
| Keetch-Byram Drought Index | 260 (+6) on a scale from 0 (very moist) to 800 (very dry) |    |    |    |    |    |    |    |    |     |





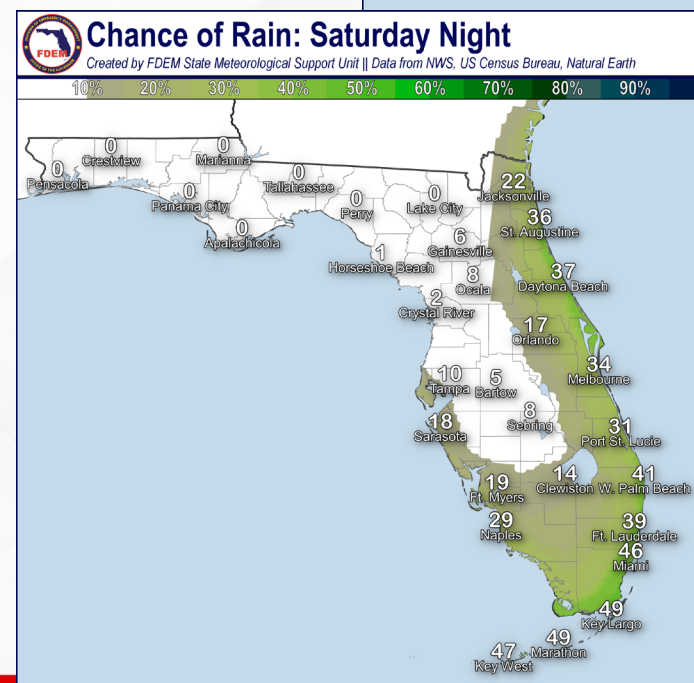
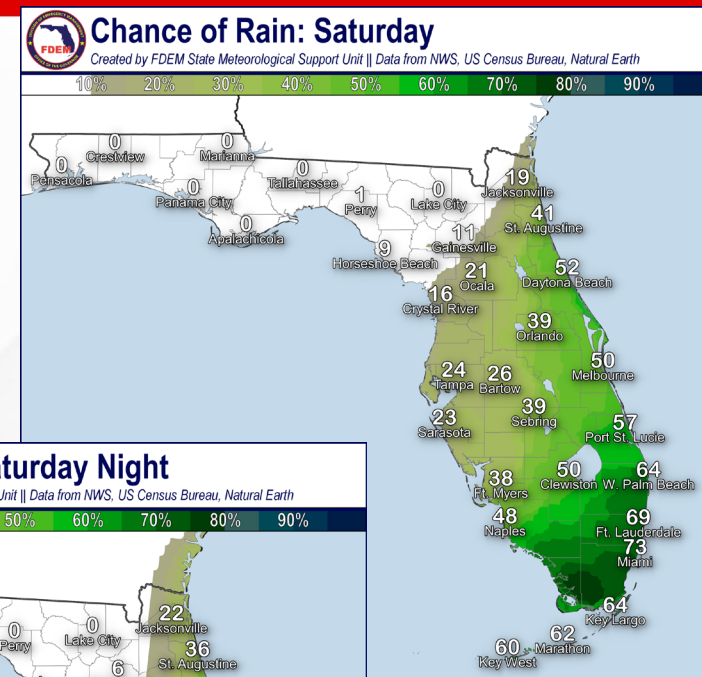
# Meteorology Summary

## Statewide Overview, Next 24 Hours:

The frontal boundary that has been draped across South Florida will finally make its final push through the Peninsula later today, marking the beginning of some relief from the wet and active pattern. However, before the front moves offshore the southern Peninsula, tropical moisture will still linger around South Florida promoting scattered showers and thunderstorms this afternoon during peak heating hours (50-75% chance of rain). The Weather Prediction Center (WPC) is outlooking a **Marginal Risk (level 1 of 4) for Flash Flooding** across far Southeast Florida for **localized flash flooding**. Multiple days of heavy rainfall have resulted in saturated soils and additional rainfall may lead to an **earlier onset to flooding**, especially in urban locations. Up the I-95 corridor along the East Coast, onshore winds will provide enough moisture to stream in off the Atlantic to produce isolated to scattered showers and thunderstorms this afternoon (30-50% chance of rain). Breezy conditions are expected along coastal Northeast Florida where a **Wind Advisory** is in effect until 8pm this evening. Northeast winds of **15-25 mph**, with **gusts upwards of 40 mph**, are expected this afternoon especially along the First Coast beaches. A few isolated showers are possible across the western side of the Peninsula and I-75 corridor where enough dry air will filter in to inhibit increased activity (15-25% chance of rain). Meanwhile over the Panhandle and Suwannee Valley, dry conditions will prevail with sunny skies and no rainfall expected.

High temperatures will remain in the middle 80s to lower 90s statewide this afternoon. Dry conditions will keep **heat index values** near or even below the actual temperatures this afternoon across North Florida, while humidity will remain elevated across South and Central Florida with feels like temperatures nearing the **lower to middle 90s**.

Showers and thunderstorms will linger throughout the evening and into the overnight hours along portions of the East Coast (30-45% chance of rain). Elsewhere across the state, mostly dry conditions can be expected. Low temperatures will fall into the lower to middle 60s across North Florida where some patchy fog is possible in low lying areas by daybreak. Lower to middle 70s can be expected across South and Central Florida overnight.







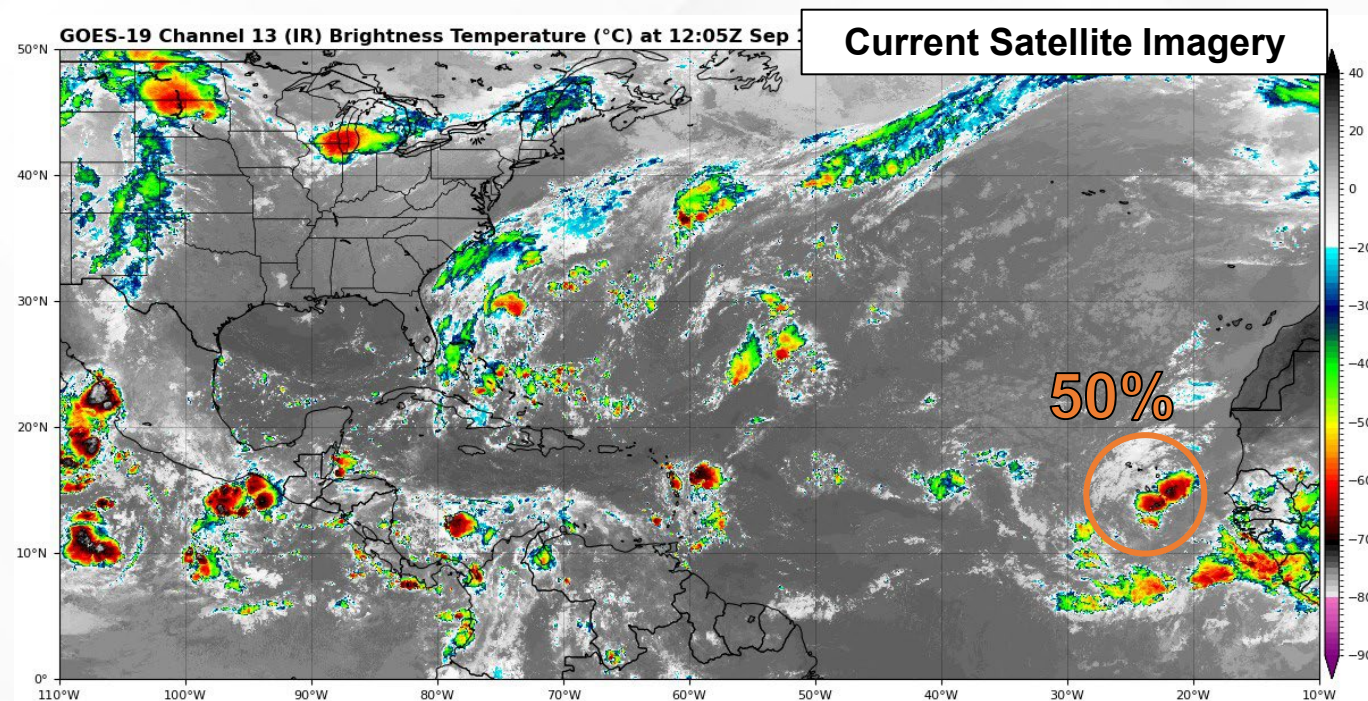
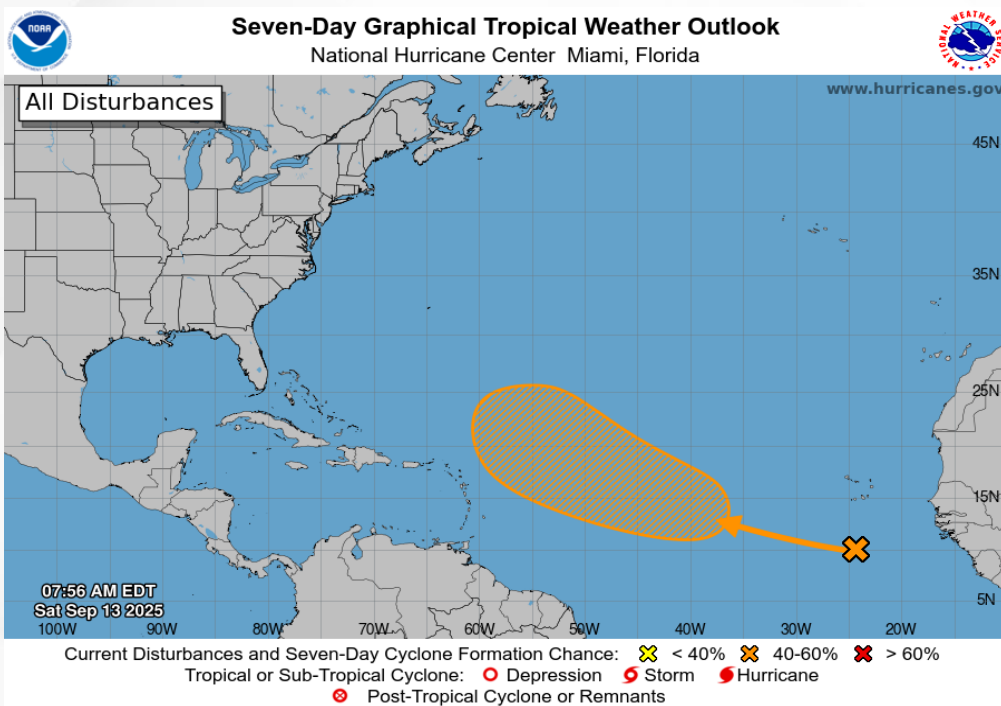
# Tropical Weather

For the latest on the tropics, please visit the National Hurricane Center (NHC) at [www.hurricanes.gov](http://www.hurricanes.gov).

**Eastern and Central Tropical Atlantic:** A tropical wave located near the Cabo Verde Islands is producing limited showers and thunderstorms over the far eastern Atlantic. Dry and stable air will limit this system's development over the next few days, but a tropical depression could form by the middle to latter part of next week while moving west-northwestward at 10 to 15 mph over the central tropical Atlantic. *This system poses no threat to Florida at this time.*

\*Formation chance through 48 hours...**low...near 0%.**

\*Formation chance through 7 days...**medium...50%.**







# Coastal Hazards & Hydrology

## Rip Currents – Saturday

**Rip Currents:** A **moderate to high risk for rip currents** can be expected for nearly all East Coast and Panhandle beaches today. A low risk for rip currents can be expected for West Coast beaches. For the latest Rip Current Outlook, visit [www.weather.gov/beach](http://www.weather.gov/beach).

**Marine Hazards:** Large ocean swells will continue to grow across most East Coast beaches today with persistent breezy onshore winds. East Coast beaches can expect **wave heights of 4-6'**, with some **wave heights upwards of 8'** in the surf zone across the First Coast. Southeast Florida beaches will see **wave heights of 2-4'**. Swells will slowly build again across Panhandle beaches today, with wave heights returning to 1-2' **with some waves reaching 3'**. West Coast beaches will see surf of around 1'.

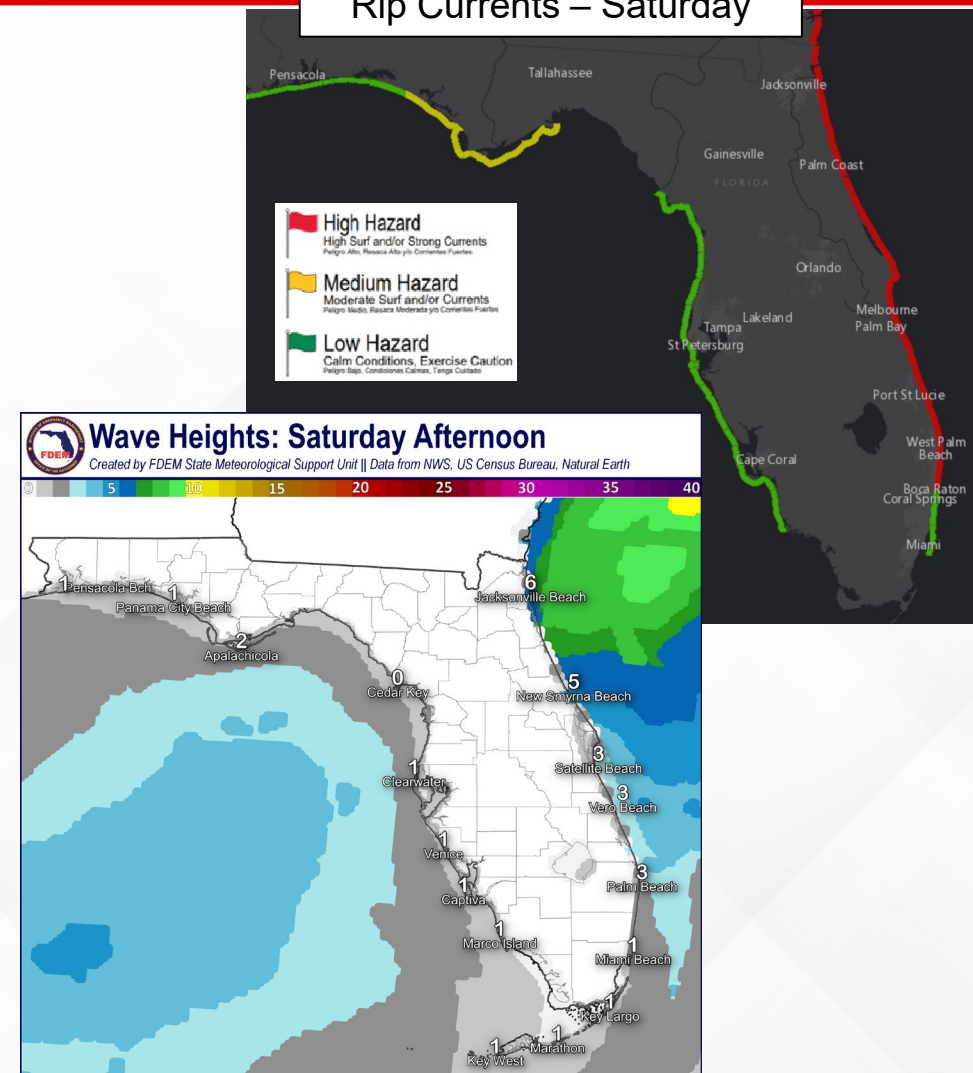
**Red Tide** was observed at background concentrations offshore Bay County in Northwest Florida and offshore Flagler County along the East Coast. It was not observed in any samples collected across Southwest Florida or the East Coast (9/5).

**Coastal Flooding:** Elevated high tides will continue to produce **minor coastal and tidal flooding** for portions of the Upper Florida Keys and coastal Palm Beach, Broward, and Miami-Dade counties near and during times of high tide. **Coastal Flood Statements** remain in effect through the afternoon for these mainland coastal areas and through the overnight for the Florida Keys. Growing ocean swells and onshore winds will trap elevated tides within tidal portions of the St. Johns River, leading to instances of **minor coastal and tidal flooding** near and during times of high tide, with a few instances of **moderate coastal flooding** possible. **Coastal Flood Advisories** remain in effect along the upper St. Johns River as well as along the Northeast Florida coast.

**Flash Flooding:** The Weather Prediction Center (WPC) is outlooking a small **Marginal Risk (level 1 of 4) for Flash Flooding** across far Southeast Florida and the Miami metro area as a front finally pushes southeast through the Peninsula. Showers and thunderstorms will develop this afternoon and evening ahead of the front bringing locally heavy rainfall and intense downpours, leading to instances of **localized flash flooding and ponding of water**. Localized areas in the **Marginal Risk for Flash Flooding** have seen double digit rainfall in the past week and saturated soils could lead to an **earlier onset to flooding**. Rainfall totals of 1-2" can be expected, with **locally higher totals** upwards of 3" are possible with any repeated downpours across South Florida.

**Riverine Flooding:** A **River Flood Warning** remains in effect for the [St. Johns River at Astor](#) as water levels have remained in **minor flood stage**. Conditions will remain in **minor flood stage** through the weekend, with a chance for short-term rises into **moderate flood stage**. The upstream gauge at the [St. Johns River near Deland](#) is currently below flood stage but is forecast to rise into Action Stage (bank-full) later this weekend as tides continue to backfill up the St. Johns River. The [Fisheating Creek at Palmdale](#) is also at Action Stage (bank-full) and is expected to remain so through the end of the week with some additional heavy rainfall. There are no other riverine concerns, though localized heavy rainfall across basins may lead to some quick-response rivers seeing water levels rise, especially across South Florida. For more information, visit the [River Forecast Center](#).

**Lake Okeechobee's** average elevation is 12.90 feet, which is within the operational band and is 1.59 feet below normal for this time of year.



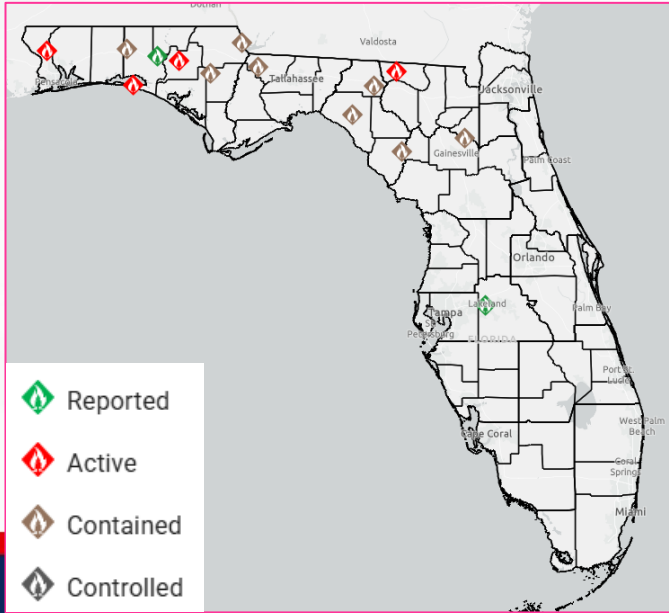
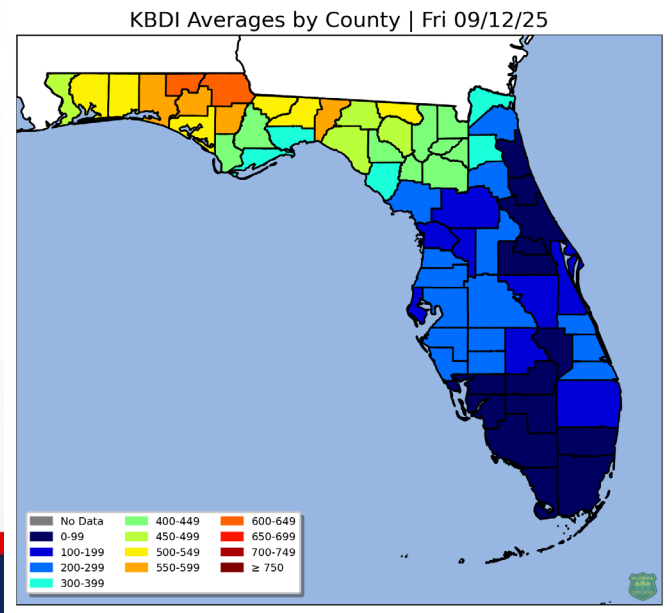
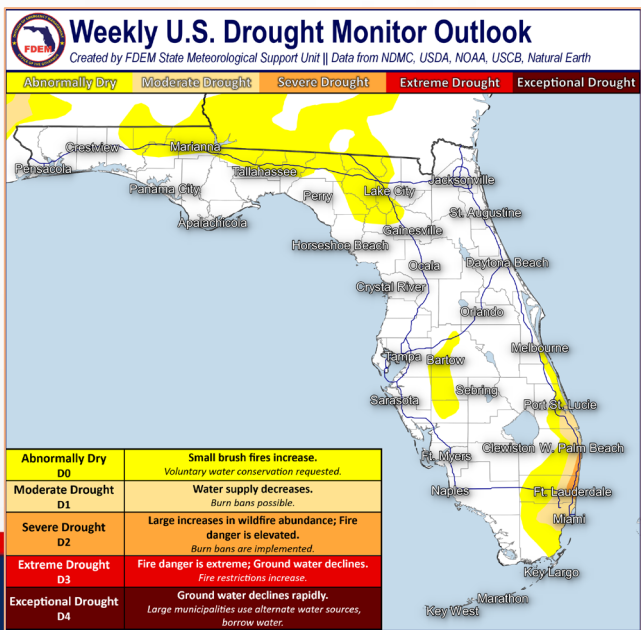


# Drought & Fire Weather

**Fire Weather:** Relative humidity values will continue to remain well above critical thresholds throughout much of the state courtesy of tropical moisture across Central and South Florida. However, ample dry air will remain in place across the Panhandle and much of North Florida where we've already seen a few small spot fires develop across the Northwest Panhandle. Relative humidity values will dip near critical thresholds this afternoon (34-45%), leading to some increase in fire risk. Scattered showers and thunderstorms will develop later today throughout Central and South Florida, keeping the wildfire threat low. *Thunderstorms will be capable of producing frequent lightning and erratic winds.* According to the [Florida Forest Service](#), there are 14 active wildfires across the state burning approximately 62 acres.

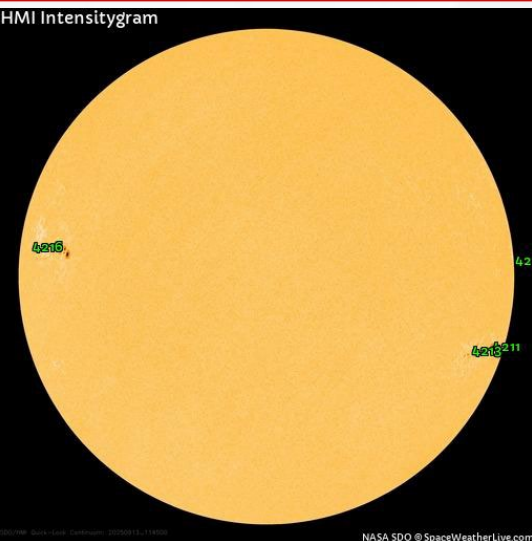
**Drought:** Much of the drought across Southeast Florida continues to diminish with recent heavy rainfall and as reflected in the most recent drought outlook. The extreme drought across coastal Palm Beach and Broward counties has been reduced to a **Severe Drought (level 2 of 4)**, while much of the previous severe drought area was reduced to **Moderate Drought (level 1 of 4)**. In general, a one category reduction was made in all locations in Southeast Florida where most locations have seen rainfall departures 2" to upwards of 8" above normal in the past two weeks. Portions of coastal Martin County remain in a **Moderate Drought (level 1 of 4)** where most heavy rainfall has missed. While wet conditions persisted across South Florida, very dry conditions were found across the Panhandle. Much of the northern Panhandle saw additional introduction to the abnormally dry (emerging drought) category where rainfall deficits have neared 2-3" over the last two weeks. These dry conditions will likely persist through the next week, leading to a possible categorical increase in the drought outlook next week. Elsewhere across the state, no additional changes were made. Abnormally dry (emerging drought) remains across inland Polk, Hardee, and DeSoto counties.

The **Keetch-Byram Drought Index** average for Florida is **260 (+6)** on a scale from 0 (very wet) to 800 (very dry). There are **12** Florida counties in the Florida Panhandle (Bay, Calhoun, Gadsden, Hamilton, Holmes, Jackson, Jefferson, Leon, Okaloosa, Santa Rosa, Walton, and Washington County) that have an average KBDI above 500 (drought/increased fire danger).

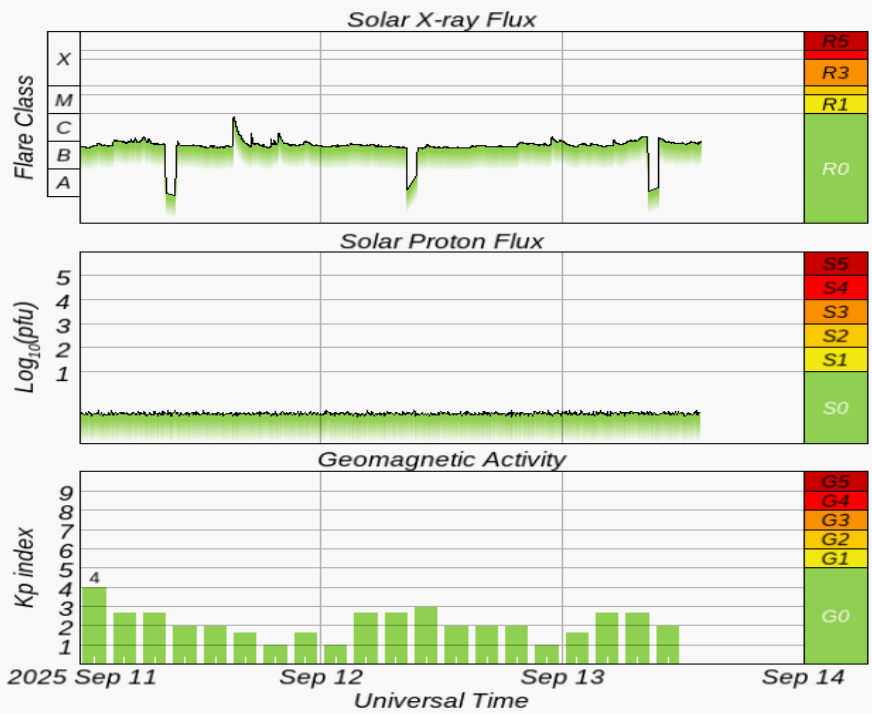
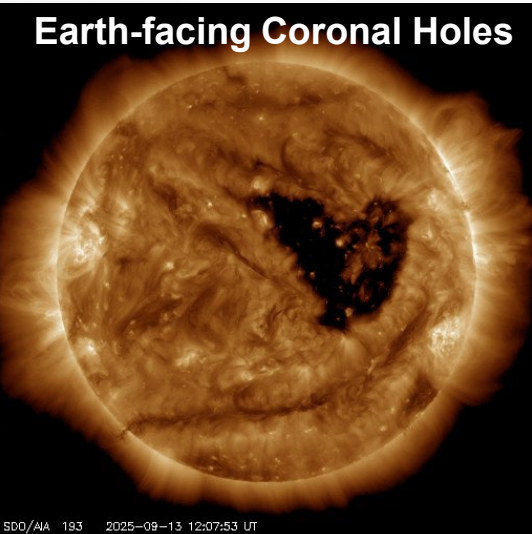




# Space Weather



Current Sunspots



| Solar Flare Risk | Active Watches & Warnings | Past 24 hours      |
|------------------|---------------------------|--------------------|
| M-class: 20%     | Geomagnetic Storm: None   | C1 Solar Flare     |
| X-class: 1%      | Radiation Storm: None     | No Radio Blackouts |

| 48-Hour Geomagnetic Forecast                          |  |
|---|--|
| 9/13  | 9/14   |
| Max Kp= 3 (G0)  | Max Kp= 4 (G0)   |
| Chance of minor activity = 5%<br>severe activity = 1% | Chance of minor activity = 20%<br>severe activity = 5% |

**Space Weather:** Solar activity is expected to remain at low levels with a chance for isolated strong (M-class) solar flares through the end of the weekend. Minor to moderate (R1-R2) radio blackouts will accompany any M-class solar flares that develop. Enhanced solar winds are expected later today and through the weekend due to coronal hole influences, with a slight chance of additional enhancement from a glancing coronal mass ejection. The Earth's geomagnetic field will remain at quiet to unsettled conditions today with periods of active levels returning on Sunday due to fast coronal hole winds. The overall space threat to Florida remains very low.





# SWO Communications Systems & Contact Information

| Equipment         | Contact   | Status      | Comments |
|-------------------|---|-------------|----------|
| Phone:            | 800-320-0519, 850-815-4001, 850-591-0071 (Backup Cell)                                    | Operational |          |
| Backup Landline:  | 850-487-3234, 850-487-3228  | Operational |          |
| Fax:              | 850-815-4979  | Operational |          |
| Email:            | <a href="mailto:SWP@em.myflorida.com">SWP@em.myflorida.com</a>                            | Operational |          |
| SWO Tracker:      | <a href="https://apps.floridadisaster.org/SWO/">https://apps.floridadisaster.org/SWO/</a> | Operational |          |
| SLERS:            | DEM Statewide   | Operational |          |
| FNARS:            | WGY974  | Operational |          |
| Federal NAWAS:    | State Watch Office  | Operational |          |
| EMnet Message:    | FL.000- State Watch Office  | Operational |          |
| EMnet Voice:      | FL SWP- State Watch Office  | Operational |          |
| IPAWS:            | LP.1 Stations via Emnet   | Operational |          |
| FIN:              | SOFEOC  | Operational |          |
| Satellite Phones: | MSAT 888-890-5178 or Iridium 480-263-8838   | Operational |          |
| Website:          | <a href="http://www.floridadisaster.org">http://www.floridadisaster.org</a>               | Operational |          |

Users wishing to subscribe (approval pending) to this distribution list, register at:

[https://public.govdelivery.com/accounts/FLDEM/subscriber/new?topic\\_id=Morning\\_SITREP](https://public.govdelivery.com/accounts/FLDEM/subscriber/new?topic_id=Morning_SITREP)