



Florida Division of Emergency Management State Watch Office

Morning Situation Report

Saturday, September 6, 2025



State Emergency Operations Center Activation Level

Level 2 Activation



SERT On-Call Personnel

Position	Personnel	Phone	Email
Operations Chief	Amy Godsey	(850) 519-8483	Amy.Godsey@em.myflorida.com
Watch Officer	Woody Harvey	(850) 591-7939	Woodham.Harvey@em.myflorida.com
Duty Officer	Jay Griffin	(850) 524-4094	Kellen.Griffin-Jay@em.myflorida.com
Operations Officer- Day	Ahnaya Benjamin	(850) 815-4001	SWP@em.myflorida.com
Operations Officer- Swing	Zachary Remante	(850) 815-4001	SWP@em.myflorida.com
Operations Officer- Night	Matthew Peloso	(850) 815-4001	SWP@em.myflorida.com
Meteorologist	Evan Newman	(850)-241-5606	Evan.Newman@em.myflorida.com
Plans Chief	Kaylynn Perry	(850) 254-5657	Plans_Command@em.myflorida.com
Logistics Chief	Christina Goetzman	(850) 519-8581	Christina.Goetzman@em.myflorida.com
Human Services Director	Pam Hughes	(850) 528-5638	Pamela.Hughes@em.myflorida.com
Emergency Services	Tim Kenyon	(850) 591-7732	Tim.Kenyon@em.myflorida.com
Infrastructure Branch Director	Paige Lay	(850) 591-9933	paige.lay@em.myflorida.com
ESF 8 On-Call	Hunter Stafford	(866) 786-4673	DLDOHDutyOfficers@flhealth.gov
Public Information Officer	Stephanie Hartman	(850) 570-3053	Stephanie.Hartman@em.myflorida.com
DEM Finance and Admin	Jeremy Smith	(850) 273-1273	Jeremy.Smith@em.myflorida.com



Response Regional Coordination Team

Team	County Location	Visits
Region 1: Jim Roberts	In Region	On-Call Status
Region 2: Enrique Gaston	In Region	On-Call Status
Region 3: Glen Hammers	In Region	On-Call Status
Region 4: Tara Kostich	In Region	On-Call Status
Region 5: Austin Beeghly	In Region	On-Call Status
Region 6: Paul Siddall	In Region	On-Call Status
Region 7: Kathryn Hollenbeck	In Region	On-Call Status
Region 8: Vacant	N/A	N/A
Region 9: Vacant	N/A	N/A
Region 10: Claudia Baker	In Region	On-Call Status



Region 8 Coverage Provided by Recovery Coordinator 7
Region 9 Coverage Provided by Recovery Coordinator 9

Status
Normal Operations
Out of Service / Unavailable



Recovery Regional Coordination Team

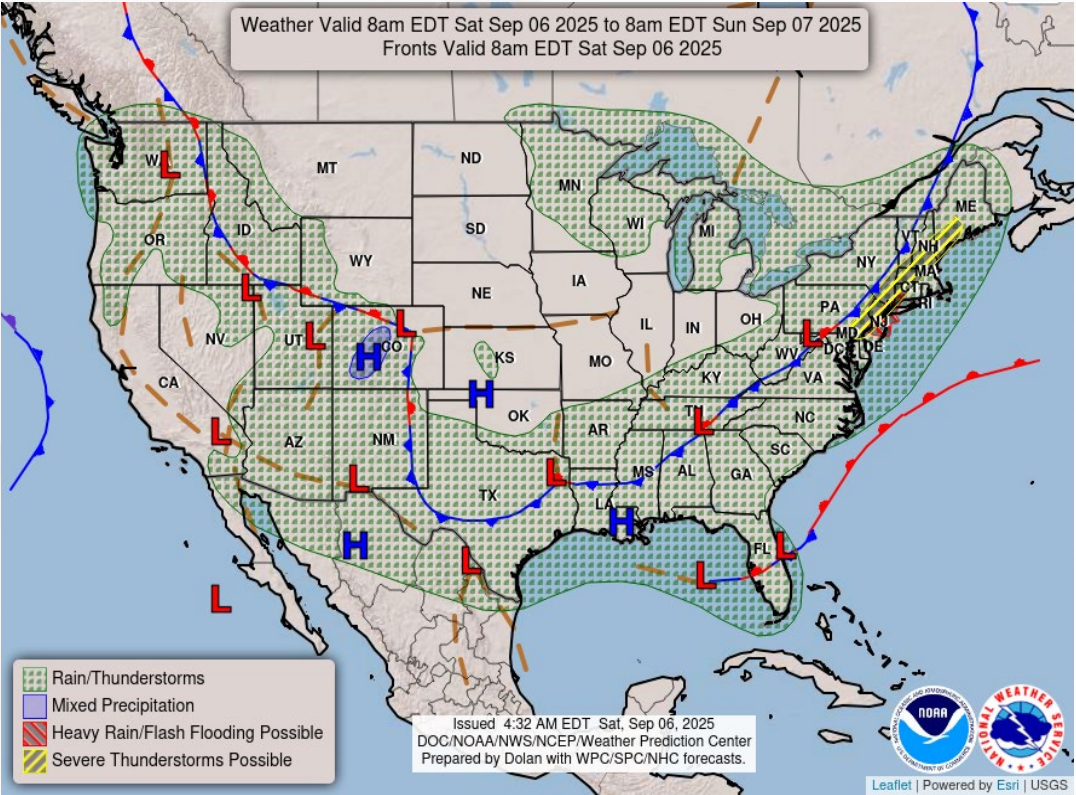
Team	County Location	Status / Activities
Region 1: Allison Blevins	In Region	Off & Monitoring
Region 2: Justin Lazzara	In Region	Off & Monitoring
Region 3: Amber Durden	In Region	Off & Monitoring
Region 4: Joshua Saunders	In Region	Off & Monitoring
Region 5: Elizabeth Caison	In Region	Off & Monitoring
Region 6: Rick Rogers	In Region	Off & Monitoring
Region 7: Antonio Zapata	In Region	On-call Coverage for R8
Region 8: Ja-Pheth Butler-Miller	Out of Region	See Coverage
Region 9: Jacob Ginsberg	In Region	On-call Coverage for R9
Region 10: Vacant	N/A	See Coverage

Region 8 Coverage Provided by Recovery Coordinator 8
Region 10 Coverage Provided by Recovery Coordinator 7

Status
Normal Operations
In Region / Delayed Response
Deployed / Delayed Response
Out of Service / Unavailable

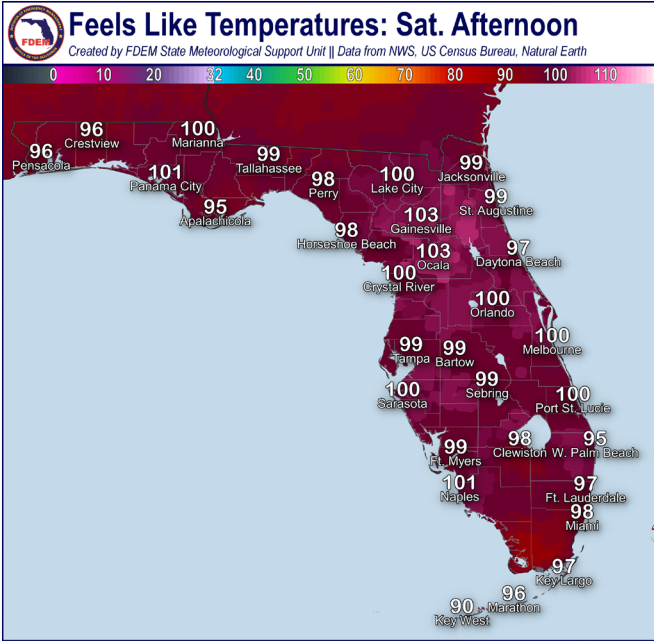
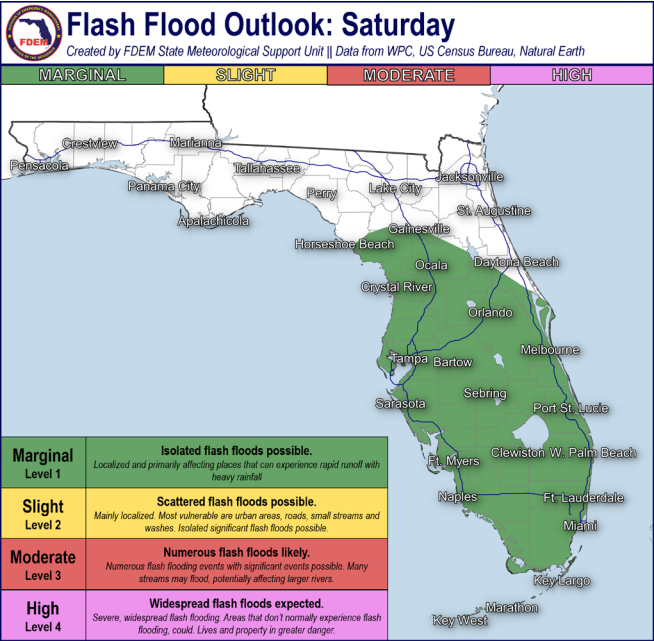


Meteorology Summary



Today's Weather Map

T threat	R1	R2	R3	R4	R5	R6	R7	R8	R9	R10
Lightning			L	L	M	M	M	H	H	H
Tornado										
Damaging Wind					L	L	L	L	L	L
Hail										
Flash Flooding			L		L	L	L	L	L	L
Excessive Heat	L	L	M	M	M	M	M	M	M	M
Wildfire										
Fog (Overnight)			L	L						
Rip Currents	M	M	L	M	M	L		M	L	L
Lake Okeechobee Elevation	12.62 ft. (1.71 ft. <u>Below</u> Normal)									
Keetch-Byram Drought Index	292 (+13) on a scale from 0 (very moist) to 800 (very dry)									





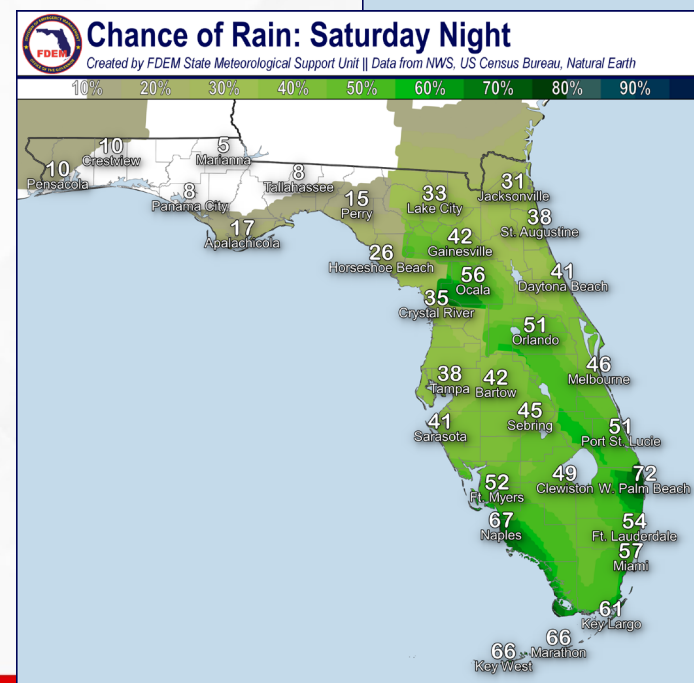
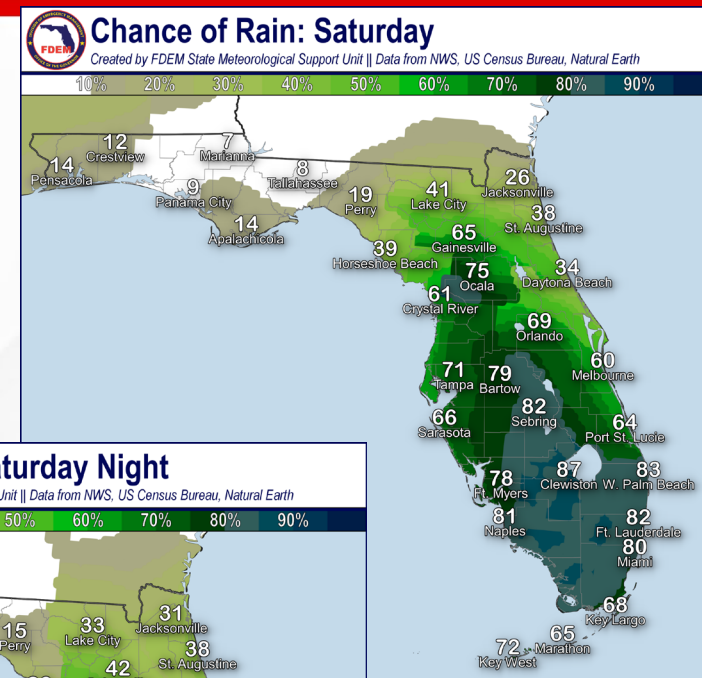
Meteorology Summary

Statewide Overview, Next 24 Hours:

Another wet and unsettled day is expected across much of the Sunshine state as a weak stationary front and ample tropical moisture promote scattered to numerous showers and thunderstorms this afternoon. A few showers and embedded thunderstorms are already moving onshore the Southwest Florida coast this morning, and additional rounds of activity will continue throughout the day along the sea breeze (70-90% chance of rain). Compared to the past few days, this moisture will also spread further north and scattered showers and thunderstorms will initiate along the sea breezes across Central and Northeast Florida as well (50-70% chance of rain). With recent heavy rainfall, some localized areas may be prone to **flash flooding and ponding of water**, especially in urban and poor-drainage locations, as well as areas with saturated soils and grounds. The Weather Prediction Center (WPC) has outlooked another **Marginal Risk (level 1 of 4) for Flash Flooding** across South and Central Florida today for **repeated downpours** that could lead to **localized flash flooding**. Mostly dry conditions will persist throughout the Panhandle courtesy of northeasterly winds; however, a shower or embedded thunderstorm cannot be ruled out for the Big Bend and Nature Coast along the sea breeze (15-35% chance of rain). Some breezy onshore winds may bring **gusts of 15-20 mph** for portions of the First and Space Coasts throughout the day.

High temperatures will remain in the upper 80s to middle 90s across the state this afternoon. **Heat index values** throughout the Peninsula will remain in the upper 90s due to ample cloud cover. Further north, some **lower to middle 100s** may be reached in localized areas across the Suwannee Valley and Northeast Florida before a few isolated to scattered thunderstorms this afternoon.

With the nearby stationary front, showers and thunderstorms will likely continue through the evening hours across the Peninsula before dissipating after midnight (40-70% chance of rain). Dry conditions will persist across the Panhandle. Some patchy fog may develop in low-lying areas across Northeast Florida towards daybreak. Low temperatures will remain in the middle to upper 70s across the state overnight.





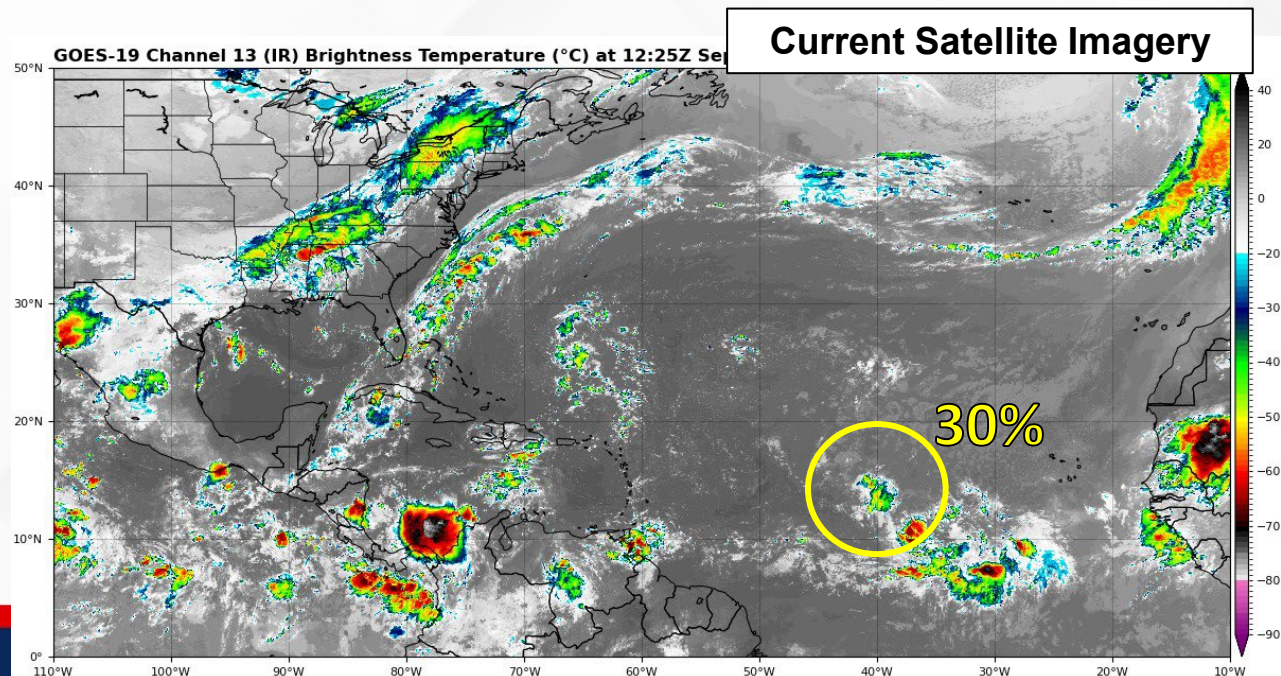
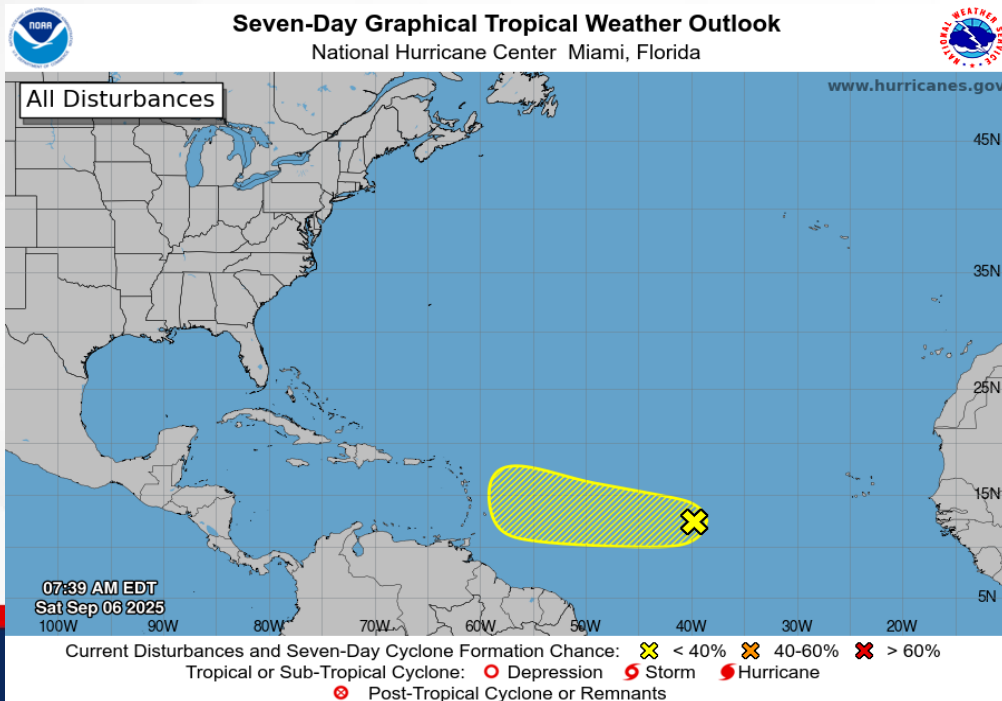
Tropical Weather

For the latest on the tropics, please visit the National Hurricane Center (NHC) at www.hurricanes.gov.

Eastern Tropical Atlantic: A tropical wave over the central tropical Atlantic is producing a small area of disorganized showers and thunderstorms. Environmental conditions are only marginally favorable for development, and the chances of this system becoming a tropical depression are decreasing. The wave is expected to move westward at 10 to 15 mph and will likely be near the Lesser Antilles by the middle part of next week. *This system poses no threat to Florida at this time.*

*Formation chance through 48 hours...**low...30%**.

*Formation chance through 7 days...**low...30%**.





Coastal Hazards & Hydrology

Rip Currents: Saturday

Rip Currents: A **moderate risk for rip currents** will continue nearly statewide today with some breezy onshore winds and elevated swells. West Coast beaches will continue to see a low risk for rip currents. For the latest Rip Current Outlook, visit www.weather.gov/beach.

Marine Hazards: Elevated ocean swells of 2-3' will remain along much of the East Coast today. Southeast Florida and Gulf coast beaches will see wave heights of 1-2'.

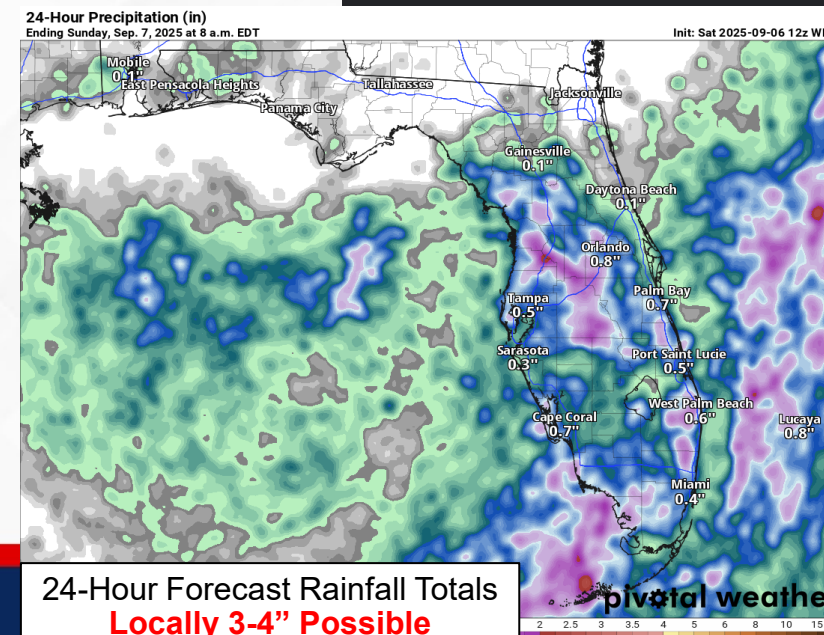
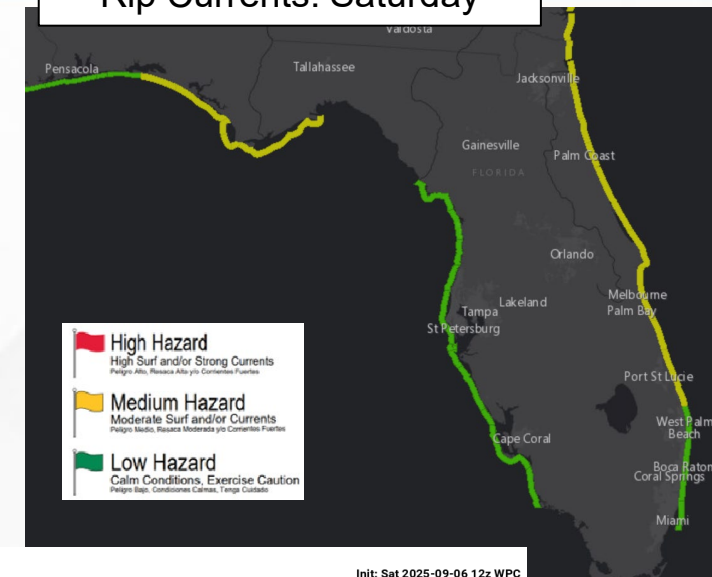
Red Tide was observed at background concentrations offshore Escambia County in Northwest Florida and offshore Brevard County along the East Coast. It was not observed in any samples collected across Southwest Florida or the East Coast (9/5).

Coastal Flooding: A **Coastal Flood Statement** is in effect for the upper Florida Keys as the full moon and first King Tides begin this weekend. **Minor saltwater flooding** of low elevation streets and lots is likely near and during times of high tide.

Flash Flooding: The weak frontal boundary over the southern Peninsula will keep ample tropical moisture around today for much of the state. The Weather Prediction Center (WPC) has outlooked a **Marginal Risk (level 1 of 4) for Flash Flooding** for all South and Central Florida where locally heavy rainfall may lead to localized instances of **ponding of water and street flooding**, especially in urban and poor-drainage locations. Additionally, areas that have already seen heavy rainfall over the last couple of days could see an earlier onset to any localized flooding with additional rainfall. Rainfall totals of 1-2" can be expected with **locally higher totals** upwards of 3-4" possible.

Riverine Flooding: A **River Flood Warning** remains in effect for the [St. Johns River at Astor](#) as water levels have remained in **minor flood stage**. Conditions will remain in **minor flood stage** through the weekend. The [Fisheating Creek at Palmdale](#) has crested back below Action Stage (bank-full) this morning, though is forecast to rise back into Action Stage later this weekend with additional rounds of heavy rainfall expected. There are no other riverine concerns, though localized heavy rainfall across basins may lead to some quick-response rivers seeing water levels rise. For more information, visit the [River Forecast Center](#).

Lake Okeechobee's average elevation is 12.62 feet, which is within the operational band and is 1.71 feet below normal for this time of year.

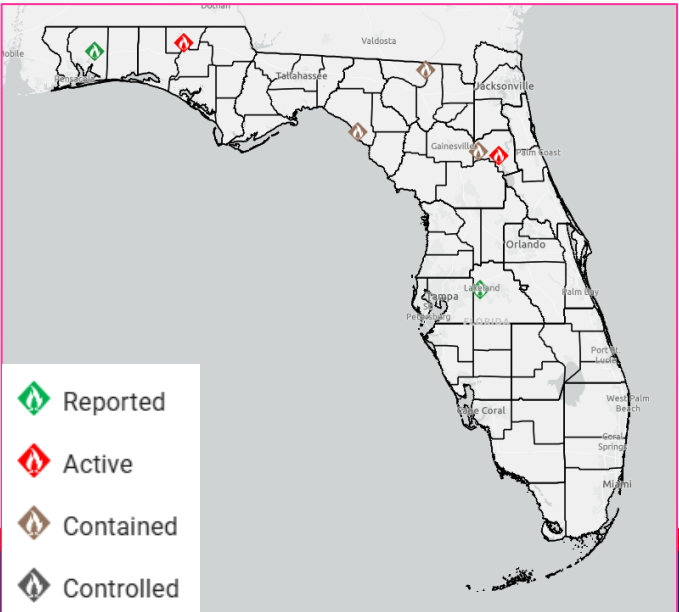
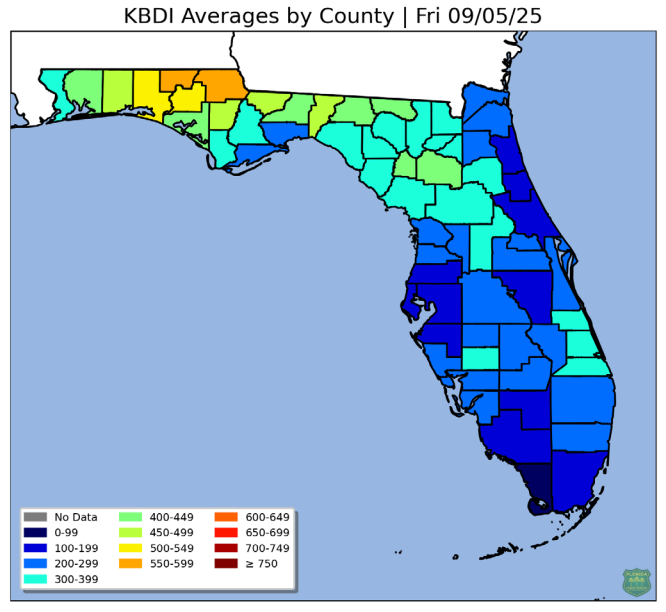
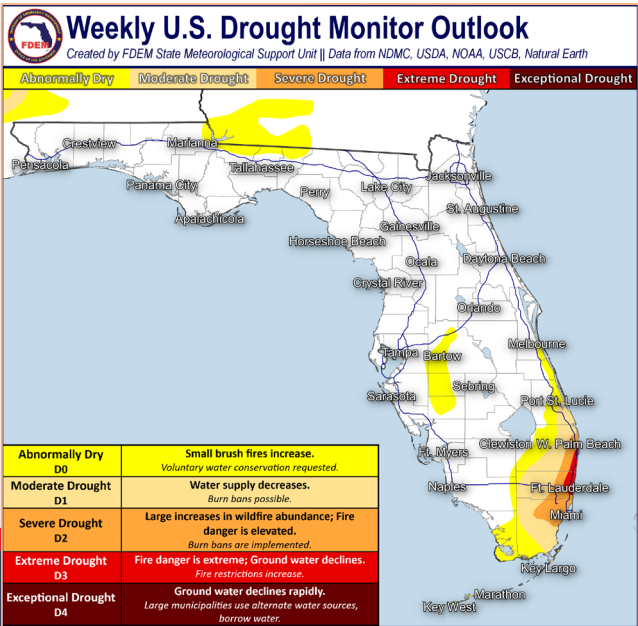




Drought & Fire Weather

Fire Weather: Rain chances will begin to creep back up today across portions of Northeast Florida and the eastern Panhandle as an additional cold front approaches. However, conditions will remain dry across much of the rest of the Panhandle. Regardless, relative humidities will remain well above critical thresholds (40-50% RH values) keeping the wildfire threat low. The southern Peninsula and Central Florida will continue to see increased rainfall chances, similarly keeping the wildfire threat low as well. *Thunderstorms will be capable of producing frequent lightning and erratic winds.* According to the [Florida Forest Service](#), there are 7 active wildfires across the state burning approximately 18 acres.

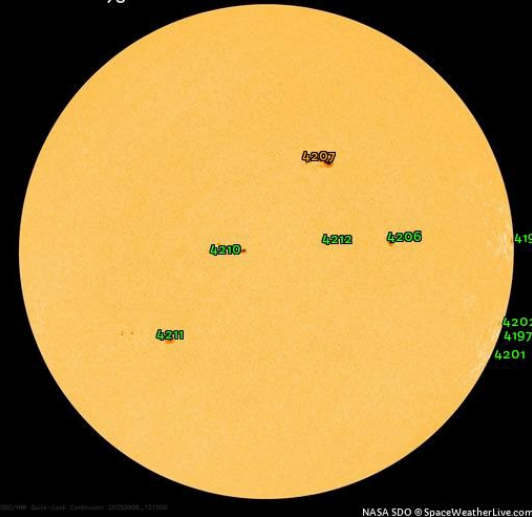
Drought: Very little changes were made across the state in the most recent drought monitor outlook. A **Severe (level 2 of 4)** to **Extreme Drought (level 3 of 4)** persists across coastal Palm Beach and Broward counties even though ample rainfall of 2-5" fell in the past week. A reduction of the moderate drought to abnormally dry conditions has been made across southwest Miami-Dade county where monthly rainfall has returned to well above normal. However, a **Moderate Drought (level 1 of 4)** was introduced across coastal Martin county where monthly rainfall deficits have reached 4-5". No changes were made across interior portions of the Peninsula where abnormally dry (emerging drought) conditions remain for portions of Polk, Hardee, and DeSoto counties. Across the Panhandle, mostly dry conditions have resulted in soils to begin to dry out as well. Abnormally dry conditions are found across northern Gadsden, Leon, and Jefferson counties, though if dry conditions persist then additional counties may be introduced to this category next week. The **Keetch-Byram Drought Index** average for Florida is **292 (+13)** on a scale from 0 (very wet) to 800 (very dry). There are **4** Florida counties (Holmes, Jackson, Walton, and Washington County) in the northern Panhandle that have an average KBDI above 500 (drought/increased fire danger).





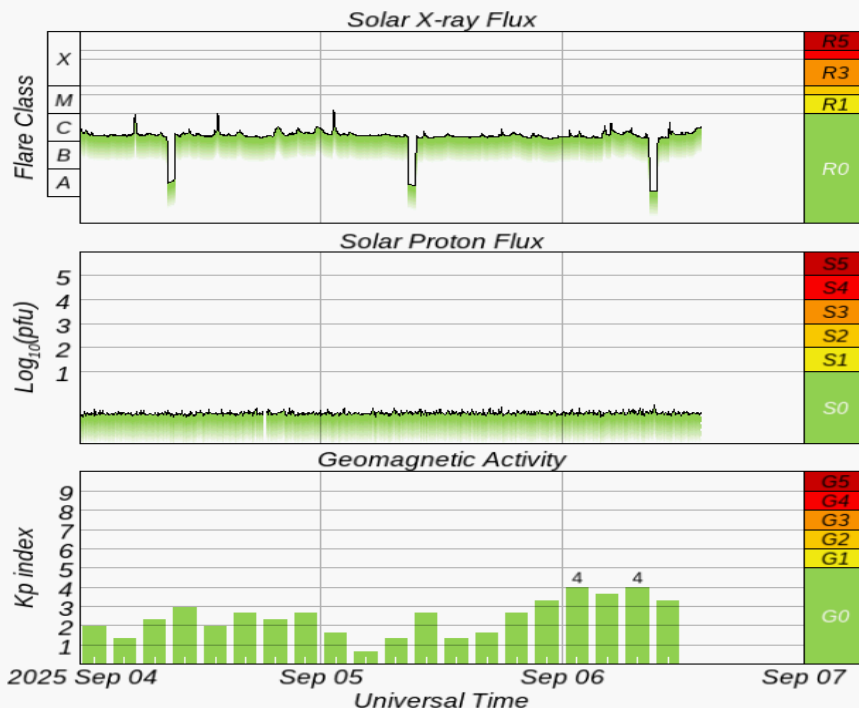
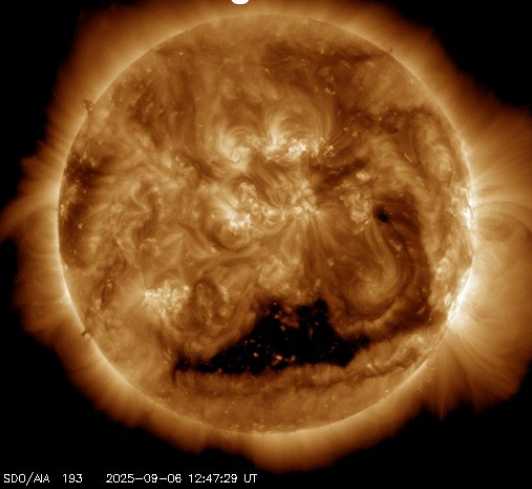
Space Weather

HMI Intensitygram



Current Sunspots

Earth-facing Coronal Holes



Solar Flare Risk	Active Watches & Warnings	Past 24 hours
M-class: 55%	Geomagnetic Storm: G1/G2 Watch – 9/6 to 9/7	C4 Solar Flare
X-class: 10%	Radiation Storm: None	No Radio Blackouts
48-Hour Geomagnetic Forecast		
9/6		9/7
Max Kp= 5 (G1)		Max Kp= 5 (G1)
Chance of minor activity = 30% severe activity = 10%		Chance of minor activity = 30% severe activity = 10%

Space Weather: Solar activity will continue at moderate levels with a chance for strong (M-class) solar flares and an isolated significant (X-class) solar flare as sunspots #4197 and #4207 remain active. Minor to moderate (R1-R2) radio blackouts can be expected with any M-class solar flares, and strong (R3) radio blackouts can be expected with any X-class solar flares. Enhanced solar winds have arrived earlier today and will persist through the weekend due to coronal hole winds. G1 (Minor) geomagnetic storming is likely at times through the weekend due to coronal hole influences and a Coronal Mass Ejection (CME) impact Sunday, with a slight chance for G2 (Moderate) geomagnetic storming. The overall space weather threat to Florida remains low.



SWO Communications Systems & Contact Information

Equipment	Contact	Status	Comments
Phone:	800-320-0519, 850-815-4001, 850-591-0071 (Backup Cell)	Operational	
Backup Landline:	850-487-3234, 850-487-3228	Operational	
Fax:	850-815-4979	Operational	
Email:	SWP@em.myflorida.com	Operational	
SWO Tracker:	https://apps.floridadisaster.org/SWO/	Operational	
SLERS:	DEM Statewide	Operational	
FNARS:	WGY974	Operational	
Federal NAWAS:	State Watch Office	Operational	
EMnet Message:	FL.000- State Watch Office	Operational	
EMnet Voice:	FL SWP- State Watch Office	Operational	
IPAWS:	LP.1 Stations via Emnet	Operational	
FIN:	SOFEOC	Operational	
Satellite Phones:	MSAT 888-890-5178 or Iridium 480-263-8838	Operational	
Website:	http://www.floridadisaster.org	Operational	

Users wishing to subscribe (approval pending) to this distribution list, register at:

https://public.govdelivery.com/accounts/FLDEM/subscriber/new?topic_id=Morning_SITREP