



# **Florida Division of Emergency Management State Watch Office**

## **Morning Situation Report**

Friday, August 29, 2025



# State Emergency Operations Center Activation Level

Level 2 Activation



# SERT On-Call Personnel

Position	Personnel	Phone	Email
Operations Chief	Amy Godsey	(850) 519-8483	<a href="mailto:Amy.Godsey@em.myflorida.com">Amy.Godsey@em.myflorida.com</a>
Watch Officer	Caitlyn Gillespie	(850) 688-2119	<a href="mailto:Caitlyn.Gillespie@em.myflorida.com">Caitlyn.Gillespie@em.myflorida.com</a>
Duty Officer	Jay Griffin	(850) 524-4094	<a href="mailto:Kellen.Griffin-Jay@em.myflorida.com">Kellen.Griffin-Jay@em.myflorida.com</a>
Operations Officer- Day	Ahnaya Benjamin	(850) 815-4001	<a href="mailto:SWP@em.myflorida.com">SWP@em.myflorida.com</a>
Operations Officer- Swing	Zachary Remante	(850) 815-4001	<a href="mailto:SWP@em.myflorida.com">SWP@em.myflorida.com</a>
Operations Officer- Night	Jim Lawhon	(850) 815-4001	<a href="mailto:SWP@em.myflorida.com">SWP@em.myflorida.com</a>
Meteorologist	Evan Newman	(850)-241-5606	<a href="mailto:Evan.Newman@em.myflorida.com">Evan.Newman@em.myflorida.com</a>
Plans Chief	Kaylynn Perry	(850) 254-5657	<a href="mailto:Plans_Command@em.myflorida.com">Plans_Command@em.myflorida.com</a>
Logistics Chief	Christina Goetzman	(850) 519-8581	<a href="mailto:Christina.Goetzman@em.myflorida.com">Christina.Goetzman@em.myflorida.com</a>
Human Services Director	Pam Hughes	(850) 528-5638	<a href="mailto:Pamela.Hughes@em.myflorida.com">Pamela.Hughes@em.myflorida.com</a>
Emergency Services	Tim Kenyon	(850) 591-7732	<a href="mailto:Tim.Kenyon@em.myflorida.com">Tim.Kenyon@em.myflorida.com</a>
Infrastructure Branch Director	Paige Lay	(850) 591-9933	<a href="mailto:paige.lay@em.myflorida.com">paige.lay@em.myflorida.com</a>
ESF 8 On-Call	Brandon Gore	(866) 786-4673	<a href="mailto:DLDOHDutyOfficers@flhealth.gov">DLDOHDutyOfficers@flhealth.gov</a>
Public Information Officer	Stephanie Hartman	(850) 570-3053	<a href="mailto:Stephanie.Hartman@em.myflorida.com">Stephanie.Hartman@em.myflorida.com</a>
DEM Finance and Admin	Jeremy Smith	(850) 273-1273	<a href="mailto:Jeremy.Smith@em.myflorida.com">Jeremy.Smith@em.myflorida.com</a>



# Response Regional Coordination Team



Team	County Location	Visits
Region 1: Jim Roberts	Walton	Active Shooter Exercise
Region 2: Enrique Gaston	Leon	Vehicle Maintenance
Region 3: Glen Hammers	Orange	L-449 Course
Region 4: Tara Kostich	Clay	Office Admin
Region 5: Austin Beeghly	Orange	L-449 Course Instruction
Region 6: Paul Siddall	Hillsborough	On-Call Status
Region 7: Kathryn Hollenbeck	Polk	Office Admin / Vehicle Maintenance
Region 8: Vacant	N/A	N/A
Region 9: Vacant	N/A	N/A
Region 10: Claudia Baker	Miami-Dade	End of Month Admin

Region 3 Coverage Provided by Response Coordinator 4

Region 8 Coverage Provided by Recovery Coordinator 8

Region 9 Coverage Provided by Recovery Coordinator 9

## Status

Normal Operations

Out of Service / Unavailable



# Recovery Regional Coordination Team

Team	County Location	Status / Activities
Region 1: Allison Blevins	Walton	Active Shooter FSE
Region 2: Justin Lazzara	Leon	Administrative Duties
Region 3: Amber Durden	Taylor	Vehicle Maintenance
Region 4: Joshua Saunders	Clay	Leadership Cohort
Region 5: Elizabeth Caison	In Region	Off & Monitoring
Region 6: Rick Rogers	In State	Return Travel to Region
Region 7: Antonio Zapata	Hillsborough	Executive Team Support
Region 8: Ja-Pheth Butler-Miller	Indian River	Administrative Duties
Region 9: Jacob Ginsberg	Lee	Boca Grande Recovery Meeting
Region 10: Vacant	N/A	See Coverage

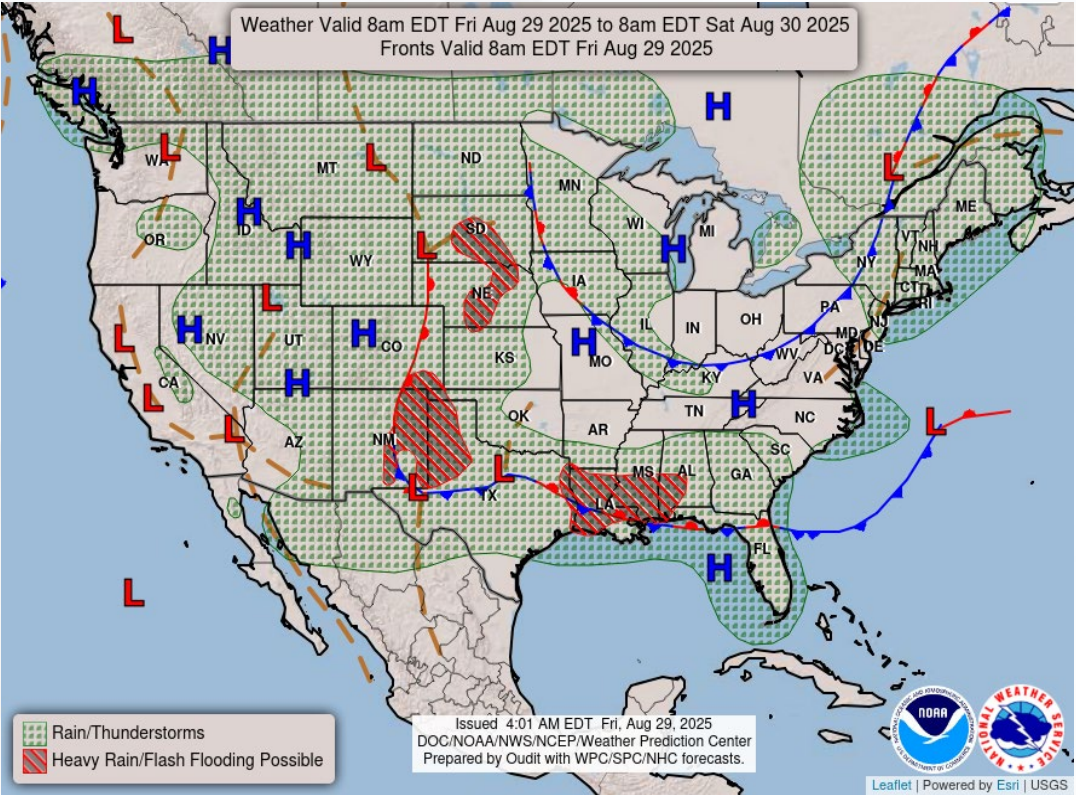
Region 10 Coverage Provided by Recovery Coordinator 8

Status
Normal Operations
In Region / Delayed Response
Deployed / Delayed Response
Out of Service / Unavailable



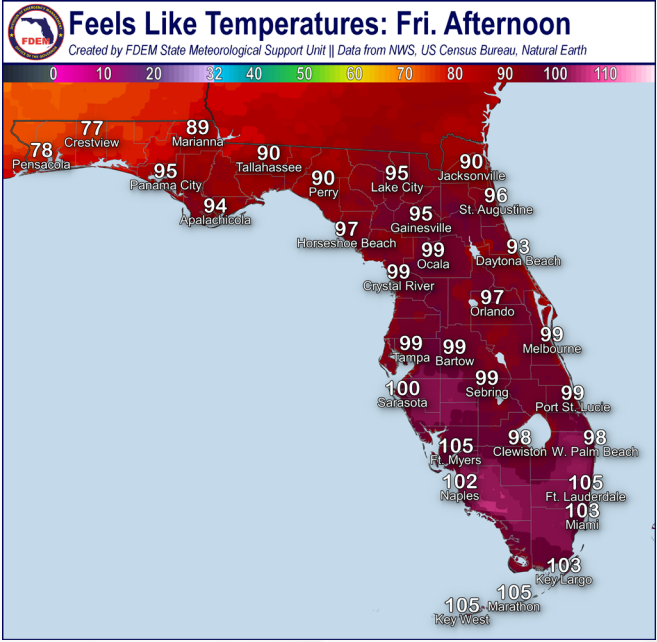
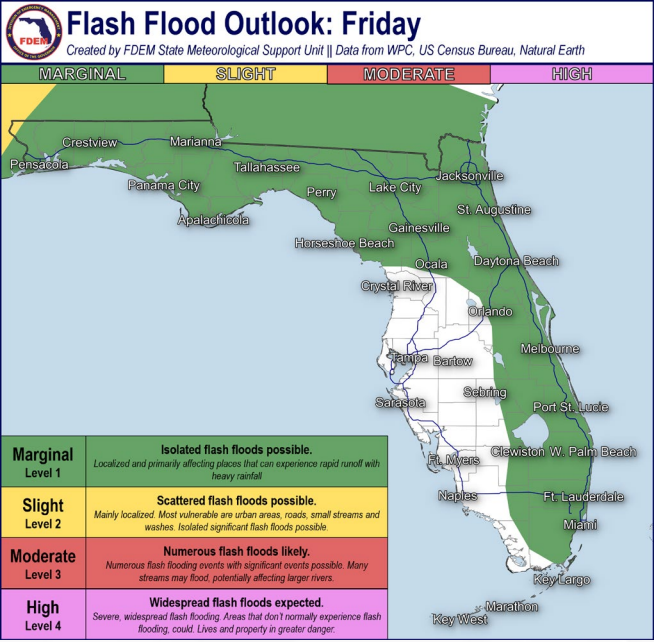


# Meteorology Summary



Today's Weather Map

Threat	R1	R2	R3	R4	R5	R6	R7	R8	R9	R10
Lightning	M	M	M	M	M	M	H	H	H	H
Tornado										
Damaging Wind	L	L	L	L	L	L	L	L	L	L
Hail										
Flash Flooding	L	L	L	L	L	L	L	L	L	L
Excessive Heat					L	L	L	M	M	M
Wildfire										
Fog (Overnight)										
Rip Currents	M	M	L	M	M	L		L	L	L
Lake Okeechobee Elevation	12.38 ft. (1.79 ft. <u>Below</u> Normal)									
Keetch-Byram Drought Index	253 (+15) on a scale from 0 (very moist) to 800 (very dry)									





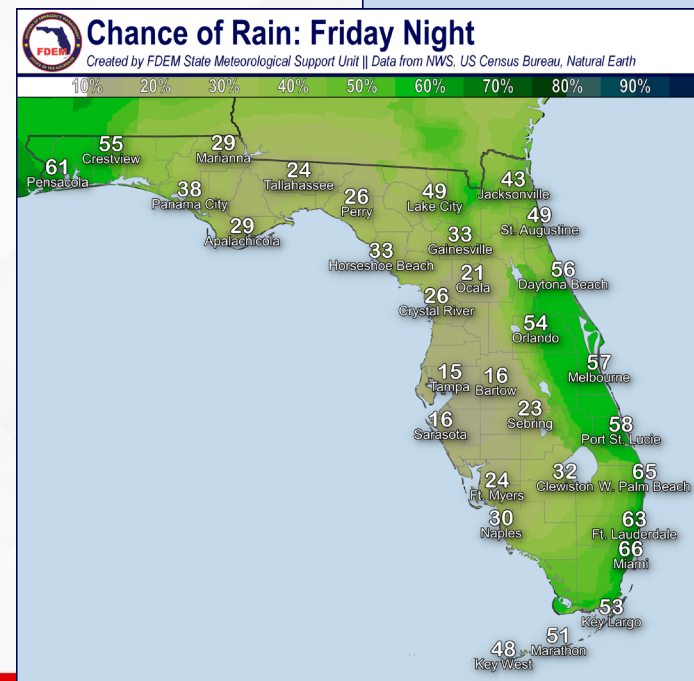
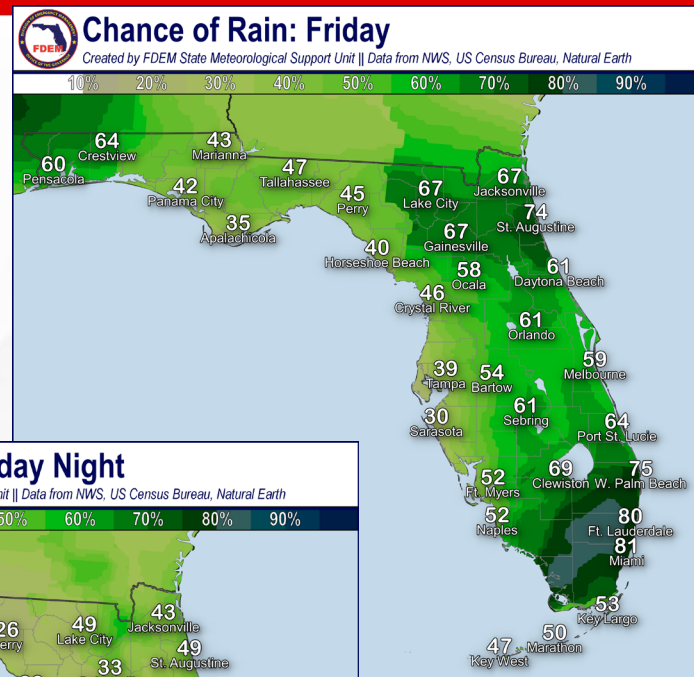
# Meteorology Summary

## Statewide Overview, Next 24 Hours:

A stalled cold front will remain draped across North Florida today as an upper-level disturbance tracks along the front. Some scattered showers and thunderstorms have already begun to enter the far western Panhandle associated with this upper-level disturbance and will continue to spread eastward throughout the day. Additional showers and thunderstorms can be expected to initiate along the sea breeze boundaries during peak heating hours this afternoon across North Florida (40-70% chance of rain). Across Central and South Florida, the sea breeze will be the primary mechanism to foster shower and thunderstorm development this afternoon (60-80% chance of rain). Ample tropical moisture and some slow-moving showers and thunderstorms may lead to **localized instances of flash flooding and ponding of water**, especially in urban and poor drainage locations, and a **Marginal Risk (level 1 of 4) for Flash Flooding** has been outlooked to account for this across the Panhandle and East Coast. Some thunderstorms that develop today may be **locally strong to severe** and capable of producing frequent lightning, gusty winds (40-50 mph), and heavy downpours.

Abundant cloud cover will limit the magnitude of the heat statewide today. High temperatures will only reach the middle to upper 80s across North Florida while Central and South Florida will see temperatures climb into the lower to middle 90s. Although **muggy conditions** will persist, **heat index values** will remain capped in the upper 80s to lower 90s across the Panhandle. South Florida may see feels like temperatures reach the **lower 100s** in localized spots this afternoon.

Shower and thunderstorm activity will persist overnight across the far western Panhandle (50-60% chance of rain), though will generally subside with loss of daytime heating across the rest of the state. Some lingering showers may remain over the East Coast before drifting offshore after midnight (40-60% chance of rain). Some showers may drift back onshore over the West Coast of Florida early Saturday morning. Low temperatures will fall back into the upper 60s to lower 70s across North Florida and middle to upper 70s throughout Central and South Florida.







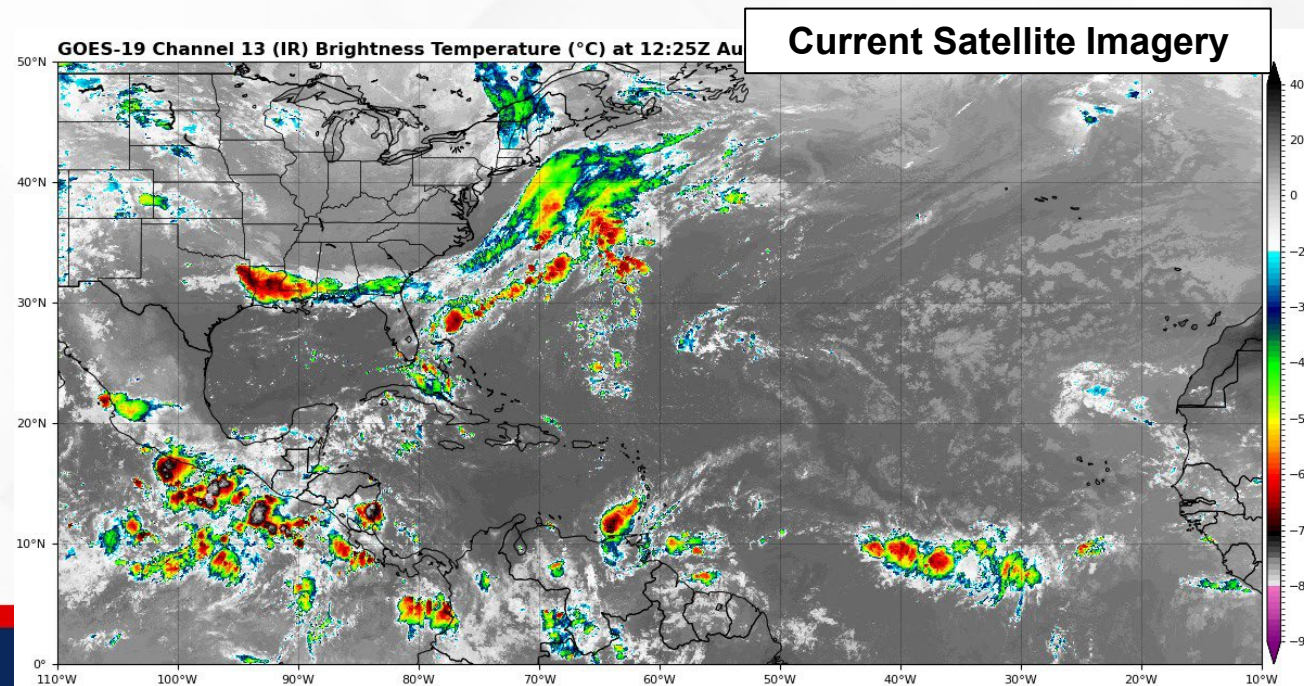
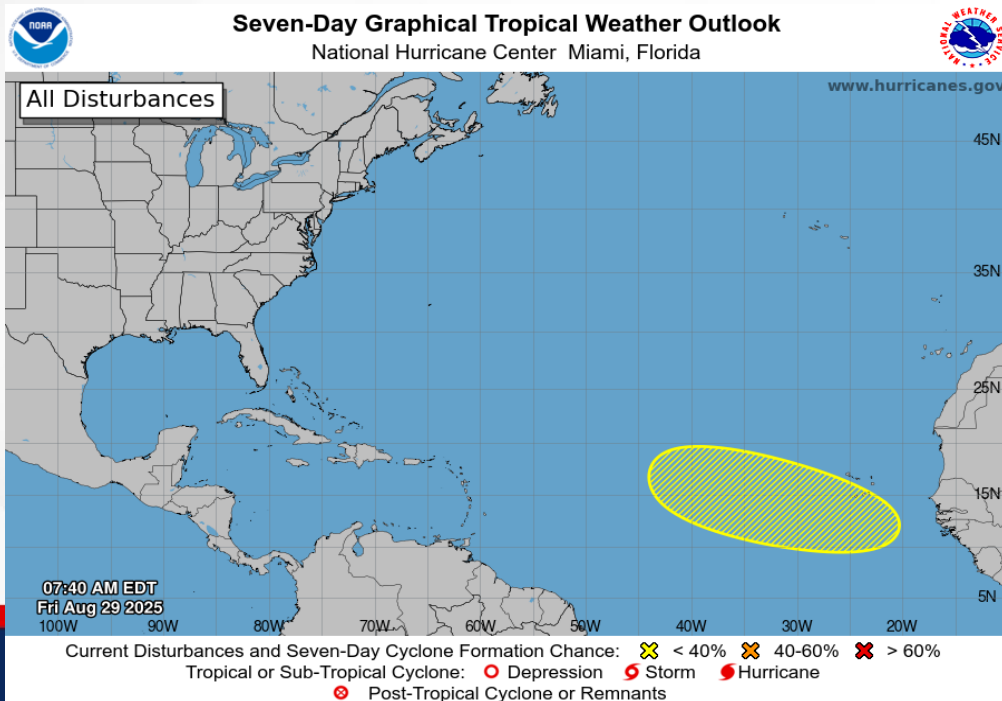
# Tropical Weather

For the latest on the tropics, please visit the National Hurricane Center (NHC) at [www.hurricanes.gov](http://www.hurricanes.gov).

**Eastern Tropical Atlantic:** A tropical wave is forecast to emerge off the west coast of Africa on Sunday. Thereafter, environmental conditions could support some slow development of this system while it moves westward to west-northwestward at 15 to 20 mph across the eastern and central tropical Atlantic next week.

\*Formation chance through 48 hours...**low...near 0%.**

\*Formation chance through 7 days...**low...30%.**







# Coastal Hazards & Hydrology

**Rip Currents:** Elevated swells will continue to create a **moderate risk for rip currents** along First Coast and Space Coast beaches along the East Coast. Panhandle beaches can still expect a **moderate risk for rip currents**. West Coast beaches will return to a low risk. For the latest Rip Current Outlook, visit [www.weather.gov/beach](http://www.weather.gov/beach).

**Marine Hazards:** Wave heights of 1-3' will continue for beaches across the state, with the largest waves along First Coast beaches.

**Red Tide** was observed at background concentrations in one sample collected offshore Sarasota County in Southwest Florida. In Northwest Florida, red tide was observed at background and very low concentrations in Gulf County and Dixie County. It was not observed in any samples along the East Coast.

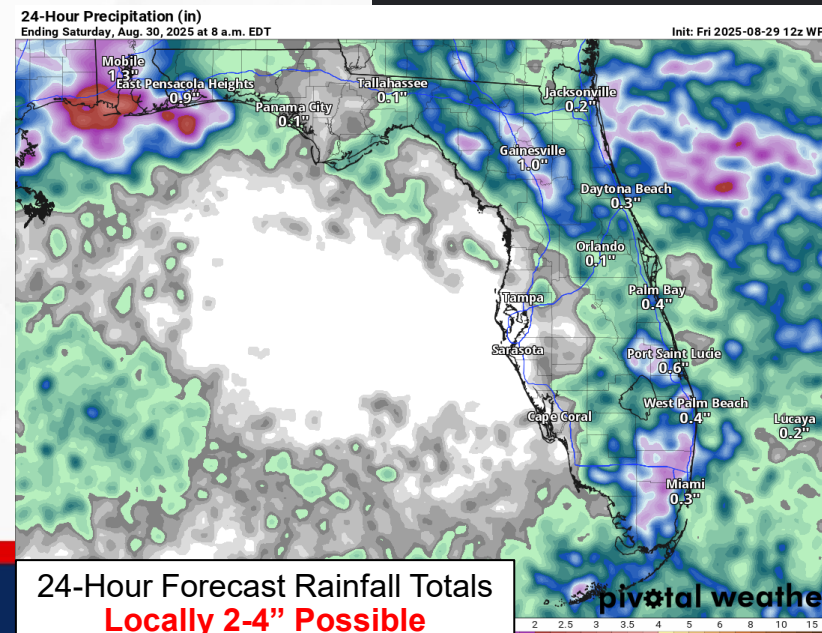
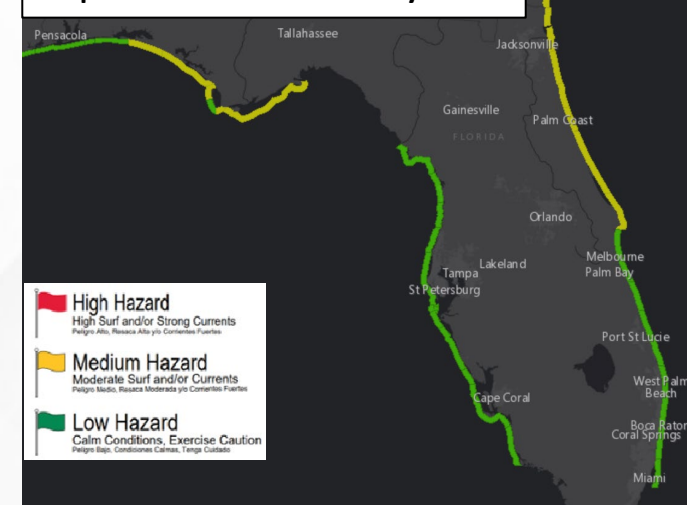
**Coastal Flooding:** Coastal flooding is not anticipated today.

**Flash Flooding:** A stalled cold front, ample tropical moisture, and the sea breeze boundaries will promote scattered to numerous showers and thunderstorms statewide today. Repeated rounds or prolonged heavy downpours may lead to **localized instances of flash flooding and ponding of water**, especially in urban and poor drainage locations. A **Marginal Risk (level 1 of 4) for Flash Flooding** is outlooked for the entire I-10 corridor and south along the East Coast. Portions of the Space Coast may be locally sensitive to additional rainfall with repeated downpours yesterday. Rainfall totals of 1-2" can be expected, with **locally higher totals** upwards of 2-4" possible.

**Riverine Flooding:** The [Myakka River at Myakka River State Park](#), [St. Johns River at Astor](#), [Fisheating Creek at Palmdale](#), and [Georgetown](#) are all observed at Action Stage (bank-full) this morning following recent heavy rainfall and will remain so throughout the day. The [Little Manatee at Wimauma at US-301](#) is also at Action Stage this morning, though will fall back to normal levels this afternoon and overnight. There are no rivers forecast to rise into flood stage this weekend, though localized heavy rainfall across basins may lead to some riverine responses. For more information, visit the [River Forecast Center](#).

**Lake Okeechobee's** average elevation is 12.38 feet, which is within the operational band and is 1.79 feet below normal for this time of year.

## Rip Currents: Friday



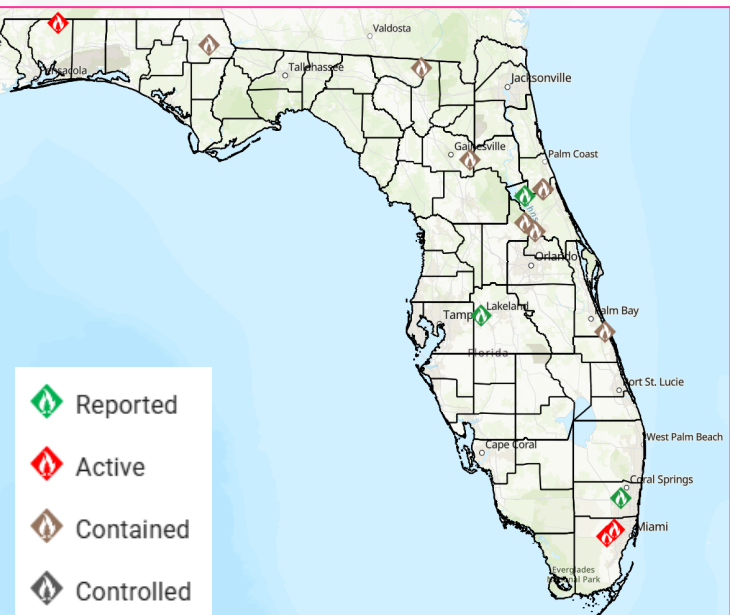
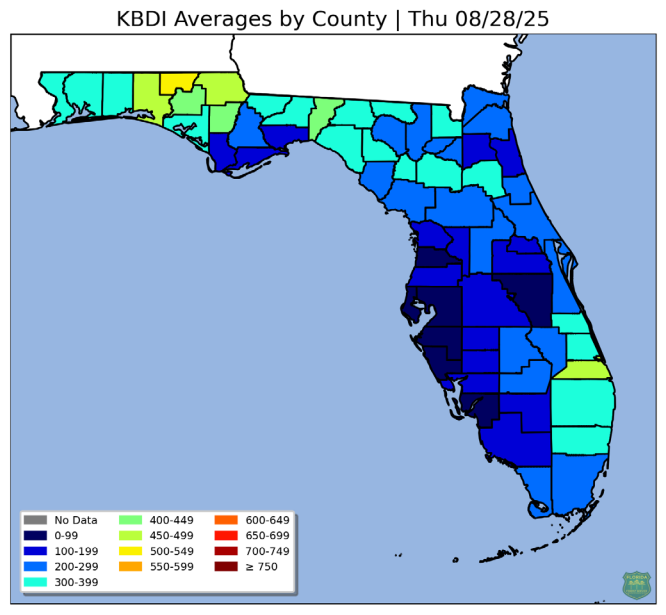
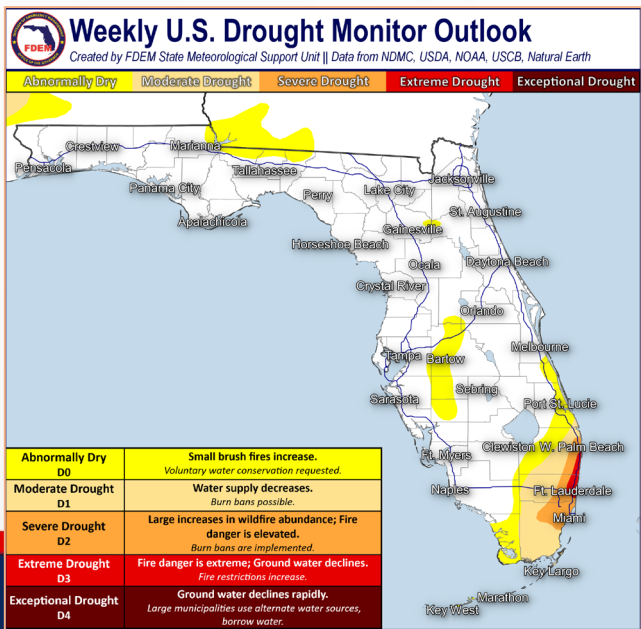


# Drought & Fire Weather

**Fire Weather:** Drier conditions will persist across the Panhandle today as another dry airmass moves in. Relative humidity values will fall near critical thresholds (35-40%), but recent rainfall will keep grounds and vegetation saturated. Throughout the Peninsula, scattered showers and thunderstorms can be expected as relative humidity values remain above critical thresholds. Increased rainfall chances will return statewide this weekend. *Thunderstorms will be capable of producing frequent lightning and erratic winds.* According to the [Florida Forest Service](#), there are 13 active wildfires across the state burning approximately 265 acres.

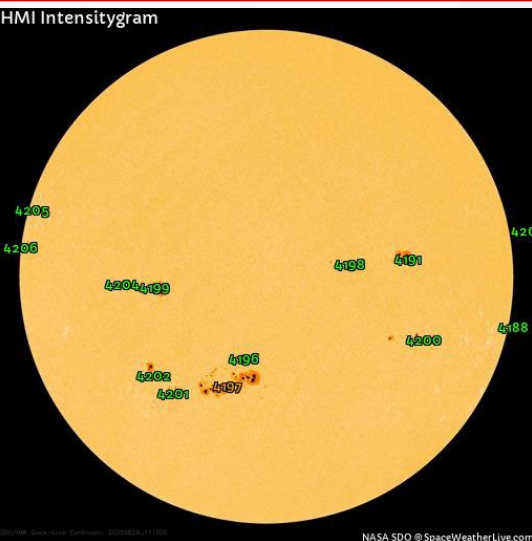
**Drought:** Some much needed improvements were made across the state in the most recent drought monitor outlook. Upwards of 3-5" of rainfall fell across interior and southern Miami-Dade county in the past week, resulting in a reduction of the severe drought to a **Moderate Drought (level 1 of 4)**. Mainland Monroe County likewise saw a reduction from moderate drought to abnormally dry conditions where beneficial heavy rainfall fell. There were no changes, though, along coastal Palm Beach and Broward counties where a **Severe (level 2 of 4)** to **Extreme Drought (level 3 of 4)** persists. However, these areas have seen 2-4" of rainfall in just the past 3 days which will be reflected in next week's drought outlook. The Nature Coast saw plentiful rainfall in the past week with a general 2-4" of rain with upwards of 7" resulting in a removal of the abnormally dry conditions. Likewise, beneficial rainfall across Polk, Hardee, and DeSoto Counties has resulted in a removal of moderate drought. Over North Florida and the Panhandle, increased rainfall chances will continue to keep drought conditions mitigated through the weekend.

The **Keetch-Byram Drought Index** average for Florida is **253 (+15)** on a scale from 0 (very wet) to 800 (very dry). There is **1** Florida county (Holmes County) that has an average KBDI above 500 (drought/increased fire danger).

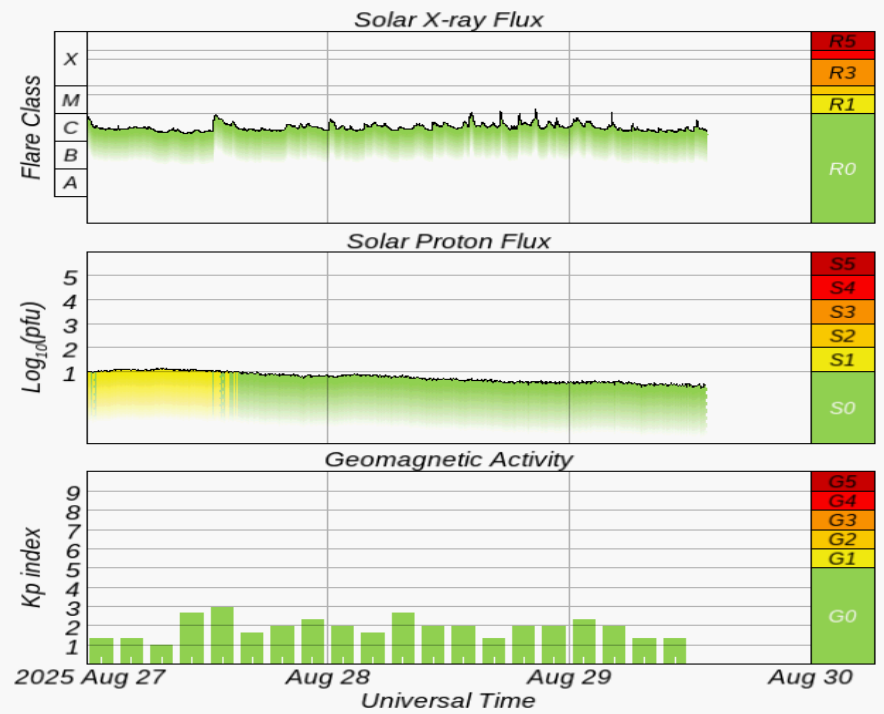
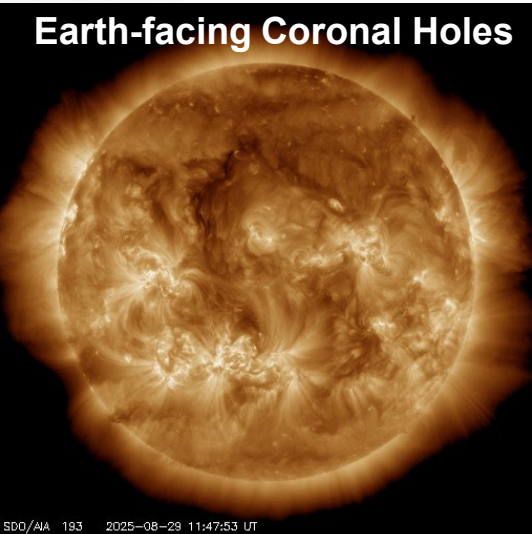




# Space Weather



Current Sunspots



Solar Flare Risk	Active Watches & Warnings	Past 24 hours
M-class: 60%	Geomagnetic Storm: None	M1 Solar Flare
X-class: 10%	Radiation Storm: None	R1 Radio Blackout

48-Hour Geomagnetic Forecast	
8/29	8/30
Max Kp= 3 (G0)	Max Kp= 2 (G0)
Chance of minor activity = 5% severe activity = 1%	Chance of minor activity = 1% severe activity = 1%

**Space Weather:** Solar activity will likely reach moderate levels through Saturday due to solar flare activity from several active sunspots. Strong (M-class) solar flares can be expected, with a chance for isolated significant (X-class) solar flares. Minor to moderate (R1-R2) radio blackouts can be expected with any M-class, and strong (R3) radio blackouts can be expected with X-class solar flares. Nominal solar wind conditions are expected through Saturday before a slight enhancement on Sunday due to coronal hole influences. The Earth's geomagnetic field is expected to remain quiet through Saturday before some unsettled levels return on Sunday. The overall space threat to Florida is very low.





# SWO Communications Systems & Contact Information

Equipment	Contact	Status	Comments
Phone:	800-320-0519, 850-815-4001, 850-591-0071 (Backup Cell)	Operational	
Backup Landline:	850-487-3234, 850-487-3228	Operational	
Fax:	850-815-4979	Operational	
Email:	<a href="mailto:SWP@em.myflorida.com">SWP@em.myflorida.com</a>	Operational	
SWO Tracker:	<a href="https://apps.floridadisaster.org/SWO/">https://apps.floridadisaster.org/SWO/</a>	Operational	
SLERS:	DEM Statewide	Operational	
FNARS:	WGY974	Operational	
Federal NAWAS:	State Watch Office	Operational	
EMnet Message:	FL.000- State Watch Office	Operational	
EMnet Voice:	FL SWP- State Watch Office	Operational	
IPAWS:	LP.1 Stations via Emnet	Operational	
FIN:	SOFEOC	Operational	
Satellite Phones:	MSAT 888-890-5178 or Iridium 480-263-8838	Operational	
Website:	<a href="http://www.floridadisaster.org">http://www.floridadisaster.org</a>	Operational	

Users wishing to subscribe (approval pending) to this distribution list, register at:

[https://public.govdelivery.com/accounts/FLDEM/subscriber/new?topic\\_id=Morning\\_SITREP](https://public.govdelivery.com/accounts/FLDEM/subscriber/new?topic_id=Morning_SITREP)