



Florida Division of Emergency Management State Watch Office

Morning Situation Report

Thursday, August 28, 2025



State Emergency Operations Center Activation Level

Level 2 Activation



SERT On-Call Personnel

Position	Personnel	Phone	Email
Operations Chief	Amy Godsey	(850) 519-8483	Amy.Godsey@em.myflorida.com
Watch Officer	Caitlyn Gillespie	(850) 688-2119	Caitlyn.Gillespie@em.myflorida.com
Duty Officer	Jay Griffin	(850) 524-4094	Kellen.Griffin-Jay@em.myflorida.com
Operations Officer- Day	Ahnaya Benjamin	(850) 815-4001	SWP@em.myflorida.com
Operations Officer- Swing	Zachary Remante	(850) 815-4001	SWP@em.myflorida.com
Operations Officer- Night	Jim Lawhon	(850) 815-4001	SWP@em.myflorida.com
Meteorologist	Evan Newman	(850)-241-5606	Evan.Newman@em.myflorida.com
Plans Chief	Kaylynn Perry	(850) 254-5657	Plans_Command@em.myflorida.com
Logistics Chief	Christina Goetzman	(850) 519-8581	Christina.Goetzman@em.myflorida.com
Human Services Director	Pam Hughes	(850) 528-5638	Pamela.Hughes@em.myflorida.com
Emergency Services	Tim Kenyon	(850) 591-7732	Tim.Kenyon@em.myflorida.com
Infrastructure Branch Director	Paige Lay	(850) 591-9933	paige.lay@em.myflorida.com
ESF 8 On-Call	Brandon Gore	(866) 786-4673	DLDOHDutyOfficers@flhealth.gov
Public Information Officer	Stephanie Hartman	(850) 570-3053	Stephanie.Hartman@em.myflorida.com
DEM Finance and Admin	Jeremy Smith	(850) 273-1273	Jeremy.Smith@em.myflorida.com



Response Regional Coordination Team



Team	County Location	Visits
Region 1: Jim Roberts	Gadsden, Holmes	NWS Weekly Meeting / EM Visit / Response Coordinators Mtg
Region 2: Enrique Gaston	Jackson	EMPA/G Meeting
Region 3: Glen Hammers	Orange	L-449 Course
Region 4: Tara Kostich	Duval	First Coast Disaster Council Meeting
Region 5: Austin Beeghly	Orange	L-449 Course Instruction
Region 6: Paul Siddall	Citrus	EM Visit
Region 7: Kathryn Hollenbeck	Polk	Healthcare Coalition Meeting / RC Meeting
Region 8: Vacant	N/A	N/A
Region 9: Vacant	N/A	N/A
Region 10: Claudia Baker	Miami-Dade	Response Coordinator Meeting

Region 3 Coverage Provided by Response Coordinator 4

Region 8 Coverage Provided by Recovery Coordinator 8

Region 9 Coverage Provided by Recovery Coordinator 9

Status

Normal Operations

Out of Service / Unavailable



Recovery Regional Coordination Team

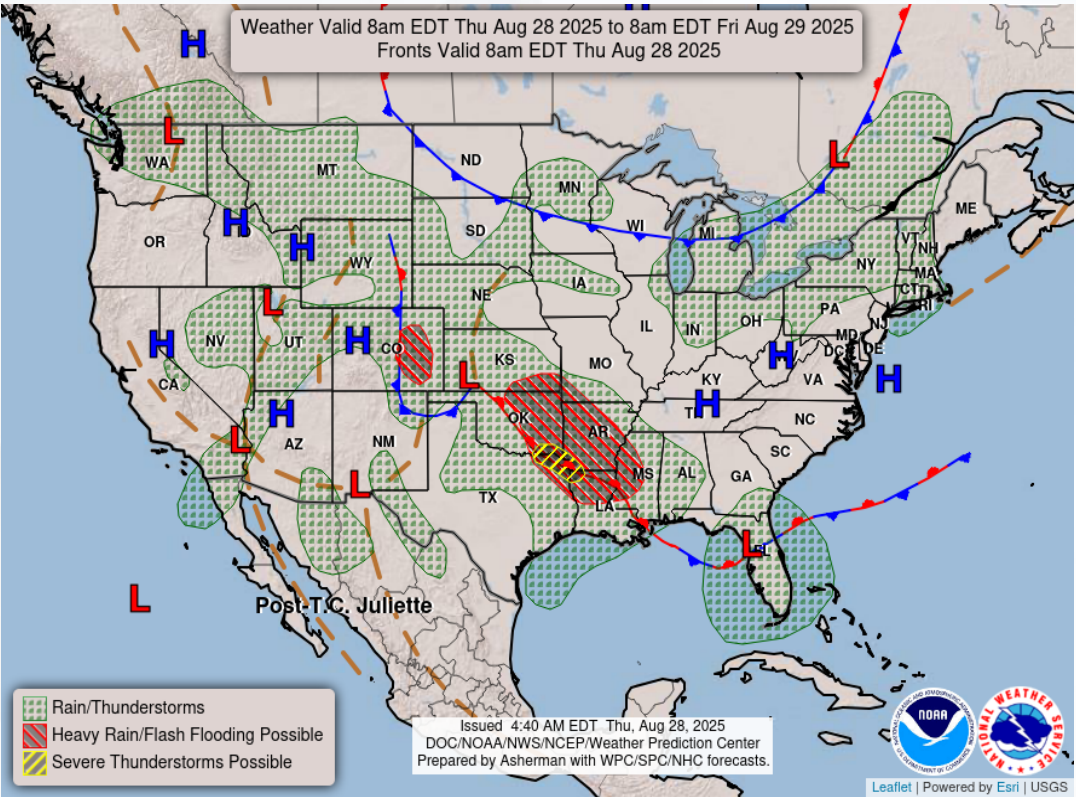
Team	County Location	Status / Activities
Region 1: Allison Blevins	Holmes	County EM Meeting
Region 2: Justin Lazzara	Jackson	County EM Meeting
Region 3: Amber Durden	Leon	HQ Admin / SERT LNO Training
Region 4: Joshua Saunders	Duval	County EM Meeting
Region 5: Elizabeth Caison	Brevard	Instructing FL680
Region 6: Rick Rogers	Leon	Onboarding Admin / SERT LNO Training
Region 7: Antonio Zapata	Polk	SDHTF Meeting / Admin Duties
Region 8: Ja-Pheth Butler-Miller	Brevard	Attending FL680
Region 9: Jacob Ginsberg	Sarasota	SDHTF Meeting / Admin Duties
Region 10: Vacant	N/A	See Coverage

Region 6 Coverage Provided by Recovery Coordinator 5
Region 10 Coverage Provided by Recovery Coordinator 8

Status
Normal Operations
In Region / Delayed Response
Deployed / Delayed Response
Out of Service / Unavailable

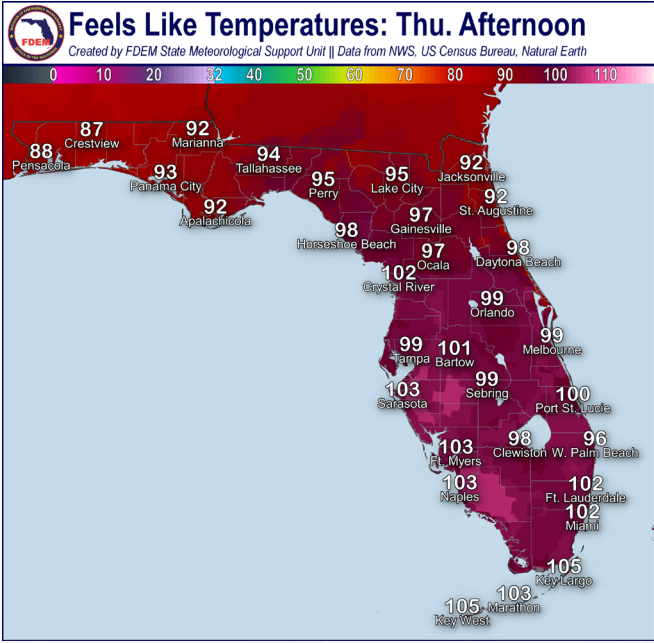
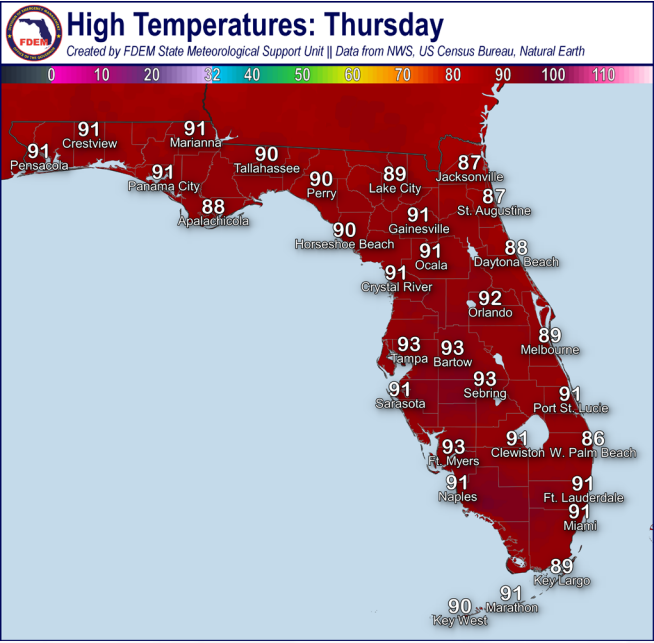


Meteorology Summary



Today's Weather Map

Threat	R1	R2	R3	R4	R5	R6	R7	R8	R9	R10
Lightning		L	M	M	H	H	H	H	H	H
Tornado										
Damaging Wind		L	L	L	L	L	L	L	L	L
Hail										
Flash Flooding				L	L	L	L	L	L	L
Excessive Heat			L	L	M	M	M	M	M	M
Wildfire										
Fog (Overnight)										
Rip Currents	M	M	L	M	M	L		M	L	L
Lake Okeechobee Elevation	12.34 ft. (1.82 ft. <u>Below</u> Normal)									
Keetch-Byram Drought Index	238 (+9) on a scale from 0 (very moist) to 800 (very dry)									





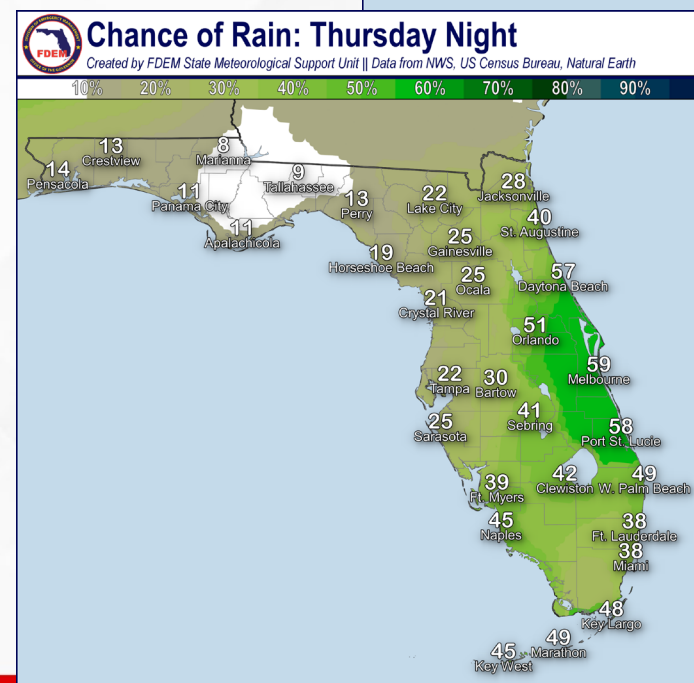
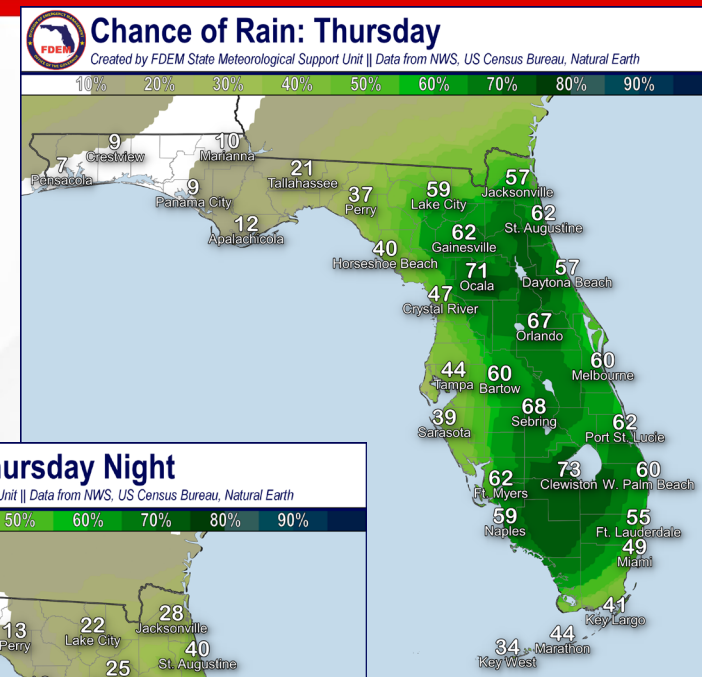
Meteorology Summary

Statewide Overview, Next 24 Hours:

A typical summertime pattern will take shape across the Peninsula today as tropical moisture and the daily sea breeze boundaries promote afternoon shower and thunderstorm development (60-80% chance of rain). A predominate Gulf sea breeze will help to initiate showers and thunderstorms early this afternoon across the West Coast before moving over the interior Peninsula and East Coast during peak heating hours of the day. Some of these thunderstorms may be **locally strong to severe** and capable of producing frequent lightning, gusty winds (40-50 mph), and heavy downpours. Although there is no organized risk for flash flooding, any areas that experience **prolonged thunderstorms** may see **localized street flooding or ponding of water**. A dry airmass will remain over the Panhandle keeping rainfall chances very low through at least today (10-20% chance of rain).

High temperatures throughout the state will remain in the upper 80s to lower 90s this afternoon. Drier conditions will keep heat index values in the lower to middle 90s across North Florida, while muggy conditions will keep **heat index values** in the **upper 90s to middle 100s** throughout Central and South Florida.

Shower and thunderstorm activity will generally taper off throughout the evening and overnight hours leading to mostly dry conditions, with some lingering showers and thunderstorms over the Treasure and Space Coast (30-60% chance of rain). Some showers may drift back onshore over Southwest Florida early Friday morning. Low temperatures will fall back into the lower 70s across North Florida and middle to upper 70s throughout Central and South Florida.





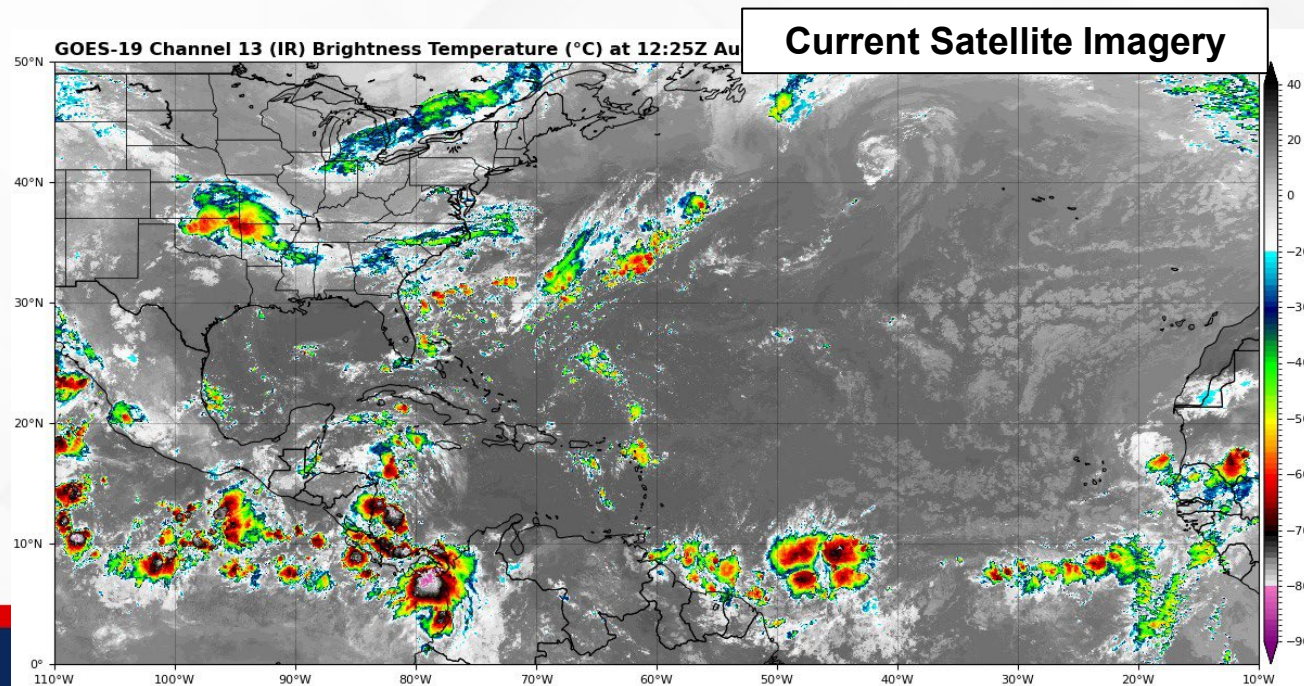
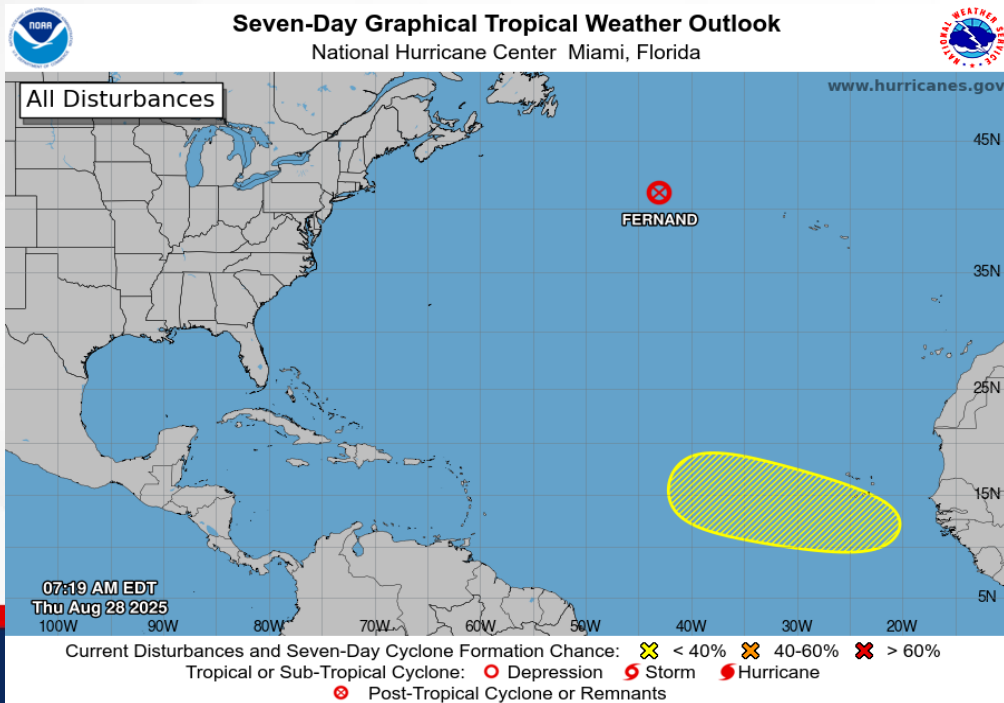
Tropical Weather

For the latest on the tropics, please visit the National Hurricane Center (NHC) at www.hurricanes.gov.

Eastern Tropical Atlantic: A tropical wave is forecast to emerge off the west coast of Africa on Sunday. Thereafter, environmental conditions could support some slow development of this system while it moves westward to west-northwestward at 15 to 20 mph, moving across the eastern and tropical Atlantic next week.

*Formation chance through 48 hours...**low...near 0%**.

*Formation chance through 7 days...**low...20%**.





Coastal Hazards & Hydrology

Rip Currents: Lingering ocean swells along the Florida East Coast will continue to create a **moderate risk for rip currents** along all beaches. Panhandle beaches can still expect a **moderate risk for rip currents**. West Coast beaches will return to a low risk. For the latest Rip Current Outlook, visit www.weather.gov/beach.

Marine Hazards: Wave heights of 1-3' will continue for beaches across the state, with the largest waves along First Coast beaches.

Red Tide was observed at background concentrations in one sample collected offshore Sarasota County in Southwest Florida. In Northwest Florida, red tide was observed at background and very low concentrations in Gulf County and Dixie County. It was not observed in any samples along the East Coast.

Coastal Flooding: Coastal flooding is not anticipated today.

Flash Flooding: There is no organized risk for flash flooding today. Daily showers and thunderstorms along the sea breeze this afternoon will bring localized heavy downpours at times that could lead to instances of **localized flash flooding and ponding of water**. Portions of Central Florida may be locally sensitive to additional rainfall with repeated downpours yesterday. Rainfall totals of 1-2" can be expected, with **locally higher totals** upwards of 2-4" possible.

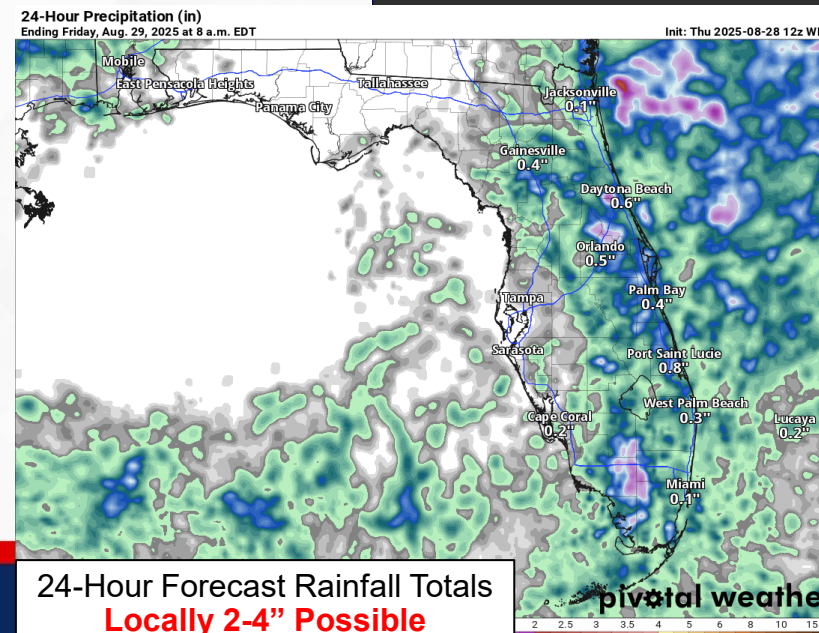
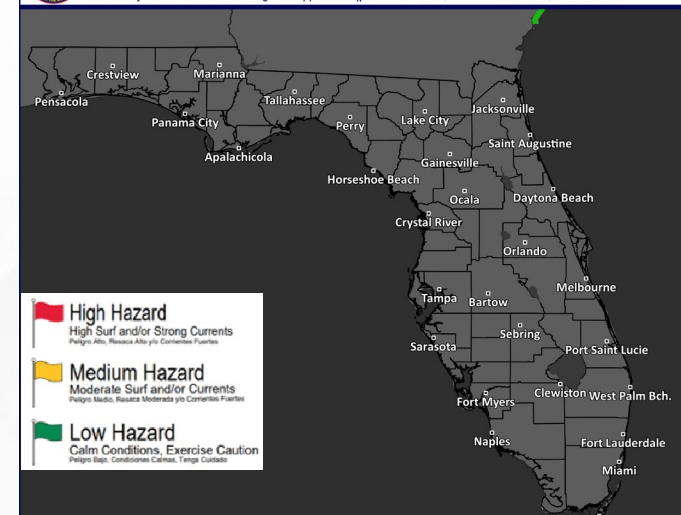
Riverine Flooding: **River Flood Warnings** have been issued for the [Little Manatee at Wimauma at US-301](#) and the [Myakka River at Myakka River State Park](#) as water levels have risen into **minor flood stage** following repeated rounds of heavy rainfall. The Little Manatee River has already peaked within **minor flood stage** and is falling through minor flood stage rather quickly. The Myakka River is forecast to crest at **minor flood stage** this afternoon before falling into Action Stage through the weekend. The [St. Johns River at Astor](#), [Fisheating Creek at Palmdale](#), and [Georgetown](#) have been observed at Action Stage (bank-full) this morning and will persist through today. For more information, visit the [River Forecast Center](#).

Lake Okeechobee's average elevation is 12.34 feet, which is within the operational band and is 1.82 feet below normal for this time of year.



Rip Current Risk: Thursday

Created by FDEM State Meteorological Support Unit || Data from NWS, US Census Bureau, Natural Earth



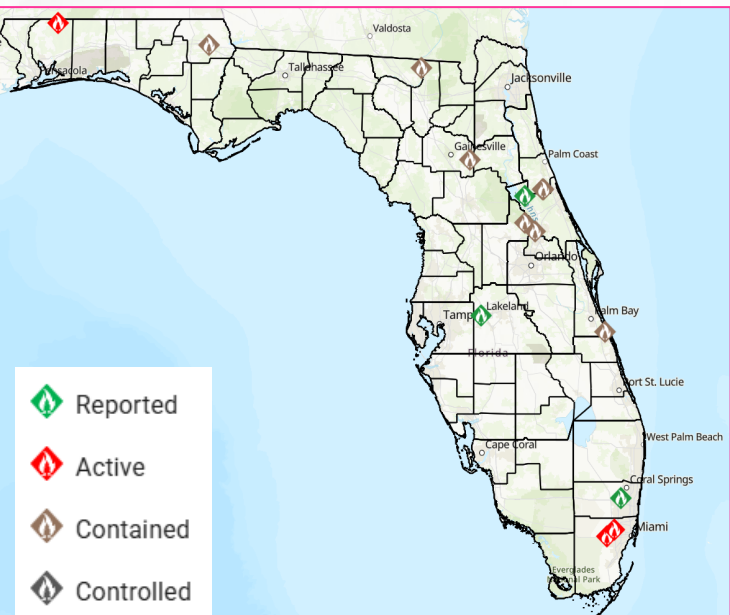
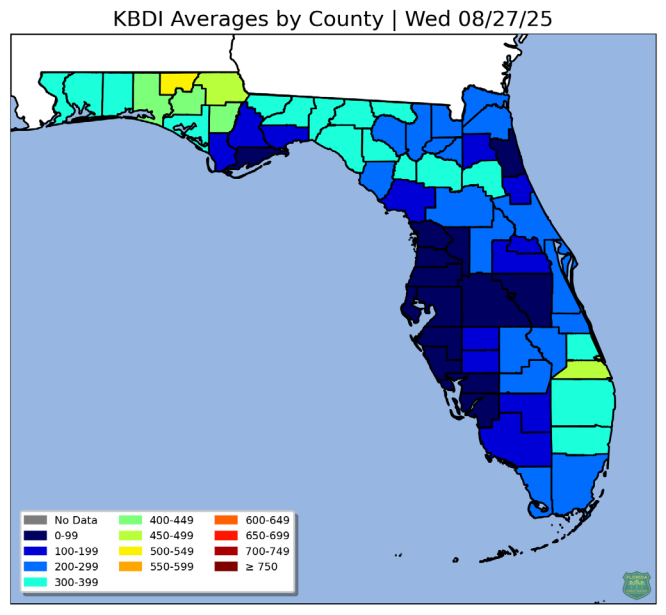
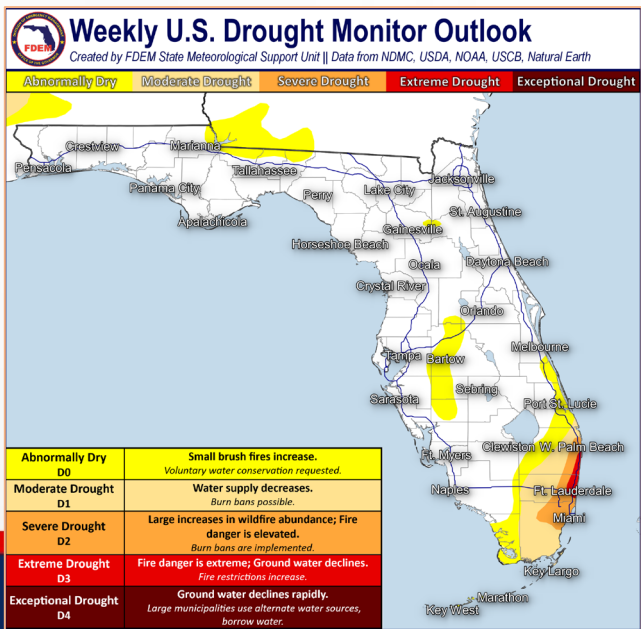


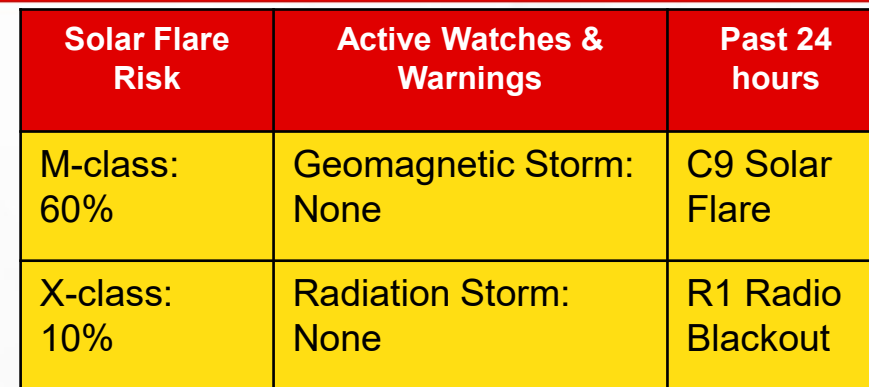
Drought & Fire Weather

Fire Weather: Drier conditions will persist across the Panhandle today as another dry airmass moves in. Relative humidity values will fall near critical thresholds (35-40%), but recent rainfall will keep grounds and vegetation saturated. Throughout the Peninsula, scattered showers and thunderstorms can be expected as relative humidity values remain above critical thresholds. Increased rainfall chances will return statewide this weekend. *Thunderstorms will be capable of producing frequent lightning and erratic winds.* According to the [Florida Forest Service](#), there are 14 active wildfires across the state burning approximately 260 acres.

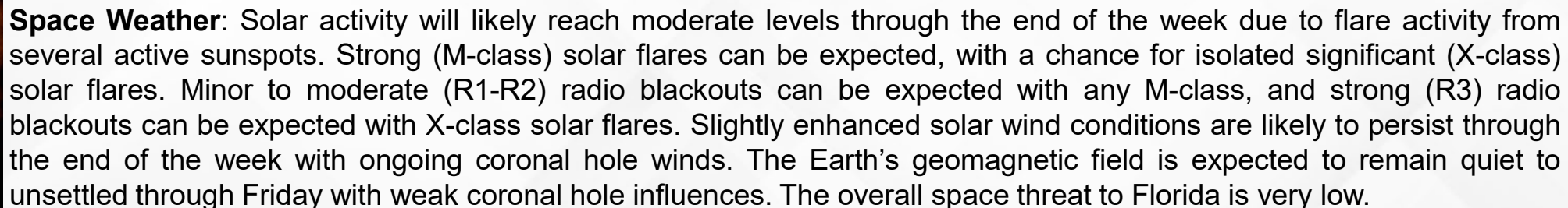
Drought: Some much needed improvements were made across the state in the most recent drought monitor outlook. Upwards of 3-5" of rainfall fell across interior and southern Miami-Dade county in the past week, resulting in a reduction of the severe drought to a **Moderate Drought (level 1 of 4)**. Mainland Monroe County likewise saw a reduction from moderate drought to abnormally dry conditions where beneficial heavy rainfall fell. There were no changes, though, along coastal Palm Beach and Broward counties where a **Severe (level 2 of 4)** to **Extreme Drought (level 3 of 4)** persists. However, these areas have seen 2-4" of rainfall in just the past 3 days which will be reflected in next week's drought outlook. The Nature Coast saw plentiful rainfall in the past week with a general 2-4" of rain with upwards of 7" resulting in a removal of the abnormally dry conditions. Likewise, beneficial rainfall across Polk, Hardee, and DeSoto Counties has resulted in a removal of moderate drought. Over North Florida and the Panhandle, increased rainfall chances will continue to keep drought conditions mitigated through the weekend.

The **Keetch-Byram Drought Index** average for Florida is **238 (+9)** on a scale from 0 (very wet) to 800 (very dry). There is **1** Florida county (Holmes County) that has an average KBDI above 500 (drought/increased fire danger).





8/28	8/29
Max Kp= 3 (G0)	Max Kp= 3 (G0)
Chance of minor activity = 5% severe activity = 1%	Chance of minor activity = 5% severe activity = 1%





SWO Communications Systems & Contact Information

Equipment	Contact	Status	Comments
Phone:	800-320-0519, 850-815-4001, 850-591-0071 (Backup Cell)	Operational	
Backup Landline:	850-487-3234, 850-487-3228	Operational	
Fax:	850-815-4979	Operational	
Email:	SWP@em.myflorida.com	Operational	
SWO Tracker:	https://apps.floridadisaster.org/SWO/	Operational	
SLERS:	DEM Statewide	Operational	
FNARS:	WGY974	Operational	
Federal NAWAS:	State Watch Office	Operational	
EMnet Message:	FL.000- State Watch Office	Operational	
EMnet Voice:	FL SWP- State Watch Office	Operational	
IPAWS:	LP.1 Stations via Emnet	Operational	
FIN:	SOFEOC	Operational	
Satellite Phones:	MSAT 888-890-5178 or Iridium 480-263-8838	Operational	
Website:	http://www.floridadisaster.org	Operational	

Users wishing to subscribe (approval pending) to this distribution list, register at:

https://public.govdelivery.com/accounts/FLDEM/subscriber/new?topic_id=Morning_SITREP