



Florida Division of Emergency Management State Watch Office

Morning Situation Report

Wednesday, August 13, 2025



State Emergency Operations Center Activation Level

Level 2 Activation



SERT On-Call Personnel

Position	Personnel	Phone	Email
Operations Chief	Amy Godsey	(850) 519-8483	Amy.Godsey@em.myflorida.com
Watch Officer	Woody Harvey	(850) 591-7939	Woodham.Harvey@em.myflorida.com
Duty Officer	Jeremy Whitt	(850) 755-8521	Jeremy.Whitt@em.myflorida.com
Operations Officer- Day	Austin Johnson	(850) 815-4001	SWP@em.myflorida.com
Operations Officer- Swing	Caleb Pitts	(850) 815-4001	SWP@em.myflorida.com
Operations Officer- Night	Jim Lawhon	(850) 815-4001	SWP@em.myflorida.com
Meteorologist	Kennedy Tartt	(850) 567-6368	Kennedy.Tartt@em.myflorida.com
Plans Chief	Kaylynn Perry	(850) 254-5657	Plans_Command@em.myflorida.com
Logistics Chief	Timothy Conroy	(850) 524-8699	timothy.conroy@em.myflorida.com
Human Services Director	Pam Hughes	(850) 528-5638	Pamela.Hughes@em.myflorida.com
Emergency Services	Tim Kenyon	(850) 591-7732	Tim.Kenyon@em.myflorida.com
Infrastructure Branch Director	Christina Goetzman	(850) 519-8581	Christina.Goetzman@em.myflorida.com
ESF 8 On-Call	Brandon Gore	(866) 786-4673	DLDOHDutyOfficers@flhealth.gov
Public Information Officer	Stephanie Hartman	(850) 570-3053	Stephanie.Hartman@em.myflorida.com
DEM Finance and Admin	Jeremy Smith	(850) 273-1273	Jeremy.Smith@em.myflorida.com



Response Regional Coordination Team



Team	County Location	Visits
Region 1: Jim Roberts	Gadsden	State Instructors Meeting / Region 1 Education & Training Meeting
Region 2: Enrique Gaston	Leon	Professional Development Training
Region 3: Glen Hammers	Columbia	Region 3 Education & Training Meeting (AM) / Out of Service (PM)
Region 4: Tara Kostich	Volusia	County EM Presentation Event
Region 5: Austin Beeghly	Leon	G-2300 Course Instruction
Region 6: Paul Siddall	Broward	SERT POD Training
Region 7: Kathryn Hollenbeck	Highlands, Polk	EM Visit / Healthcare Coalition Meeting
Region 8: Mason Kozac	N/A	N/A
Region 9: Vacant	N/A	N/A
Region 10: Claudia Baker	Broward	SERT POD Training

Region 2 Coverage Provided by Response Coordinator 2

Region 5 Coverage Provided by Recovery Coordinator 5

Region 8 Coverage Provided by Recovery Coordinator 8

Region 9 Coverage Provided by Recovery Coordinator 9

Status

Normal Operations

Out of Service / Unavailable



Recovery Regional Coordination Team

Team	County Location	Status / Activities
Region 1: Allison Blevins	Bay	LMS Meeting / General Counsel Meeting
Region 2: Justin Lazzara	Franklin	LMS Meeting / General Counsel Meeting
Region 3: Amber Durden	Orange	County EM Meeting / General Counsel Meeting - **Field Training**
Region 4: Joshua Saunders	Putnam	LTRG Meeting / General Counsel Meeting
Region 5: Elizabeth Caison	Orange	County EM Meeting / General Counsel Meeting - **Field Training Officer**
Vacant	N/A	See Coverage
Region 6: Vacant		
Region 7: Antonio Zapata	Polk	County EM Meeting - Recovery/Mitigation / General Counsel Meeting
Region 8: Ja-Pheth Butler-Miller	Indian River	Administrative Duties / General Counsel Meeting
Region 9: Jacob Ginsberg	Sarasota	Training: Mass Casualty Workshop / General Counsel Meeting
Region 10: Vacant	N/A	See Coverage

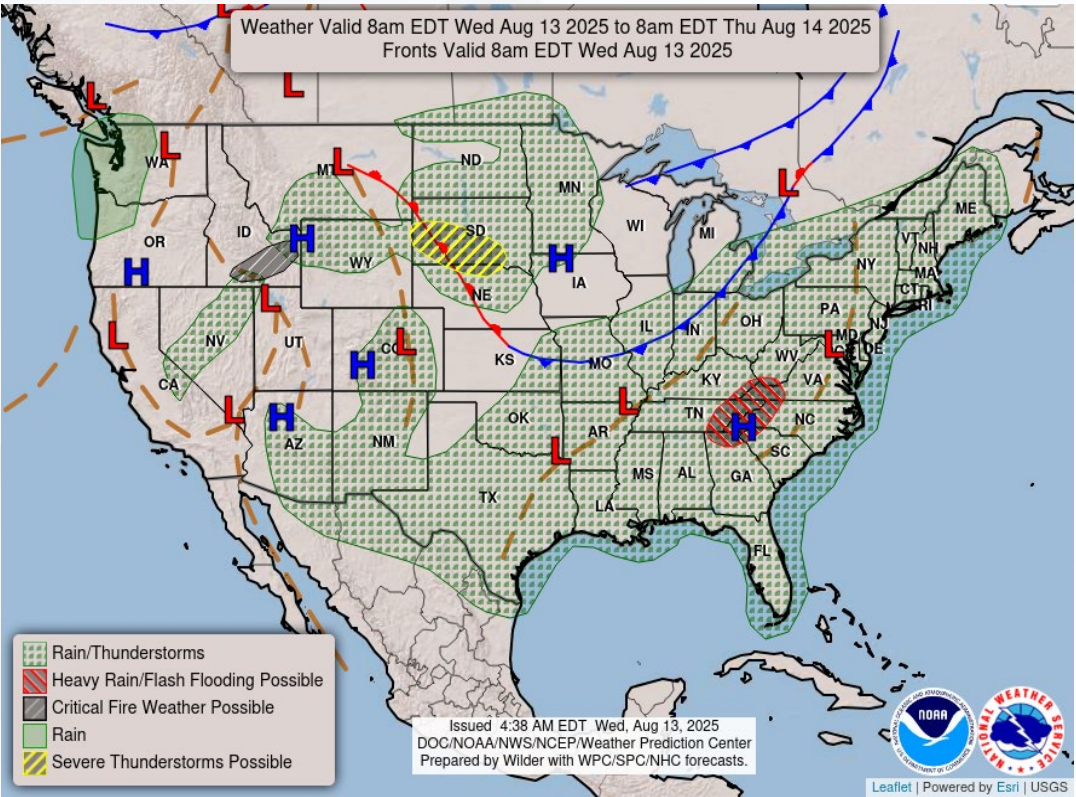
Region 6 Coverage Provided by Recovery Coordinator 5

Region 10 Coverage Provided by Recovery Coordinator 8

Status
Normal Operations
In Region / Delayed Response
Deployed / Delayed Response
Out of Service / Unavailable

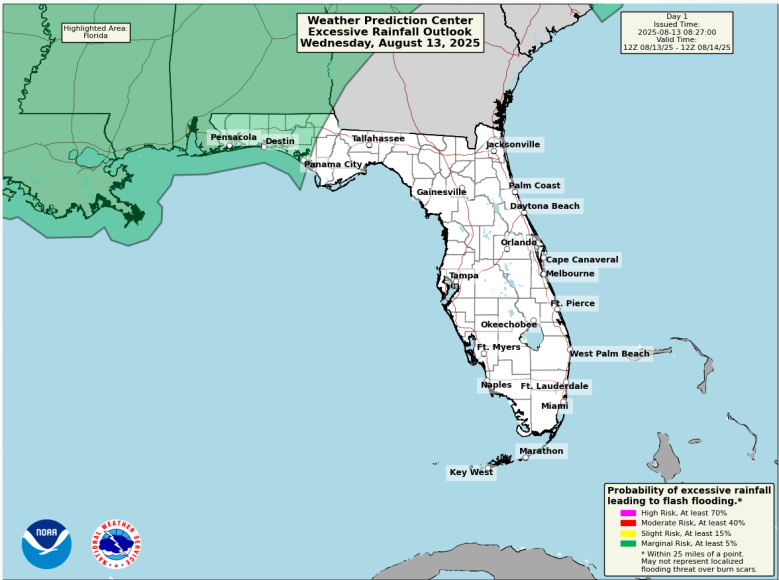
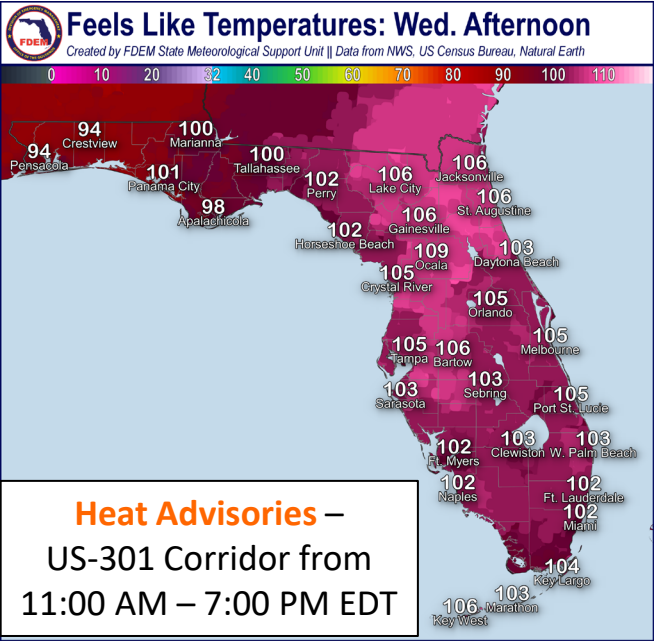


Meteorology Summary



Today's Weather Map

Threat	R1	R2	R3	R4	R5	R6	R7	R8	R9	R10
Lightning	H	H	M	M	M	M	M	M	M	L
Tornado										
Damaging Wind	L	L	L	L	L	L	L	L	L	L
Hail										
Flash Flooding	M	L	L	L	L	L	L	L	L	L
Excessive Heat	M	M	H	H	M	H	H	M	M	M
Wildfire										
Fog (Overnight)										
Rip Currents	H	H	L		M	L		M	L	M
Lake Okeechobee Elevation	12.19 ft. (1.74 ft. Below Normal)									
Keetch-Byram Drought Index	235 (+3) on a scale from 0 (very moist) to 800 (very dry)									





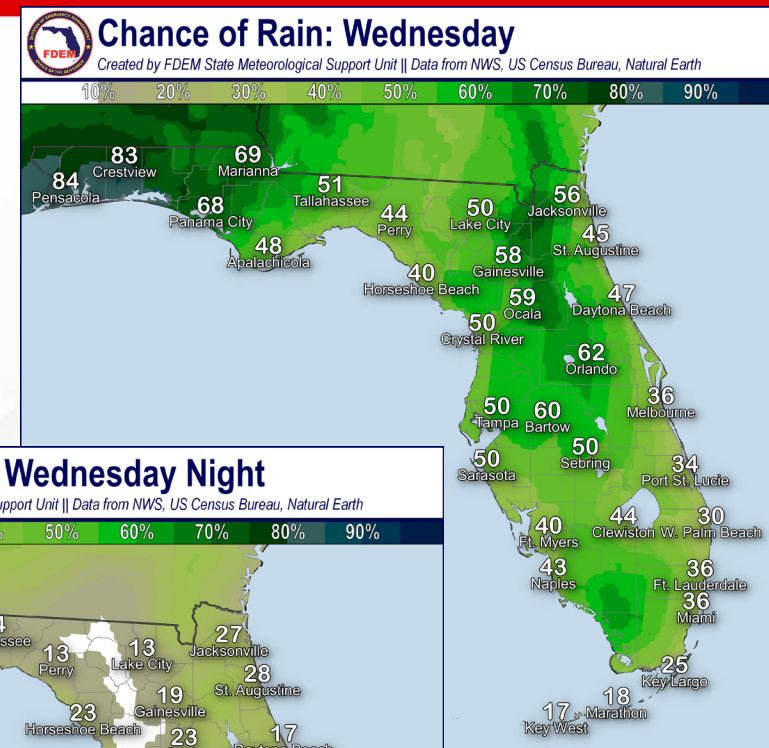
Meteorology Summary

Statewide Overview, Next 24 Hours:

Lingering tropical moisture associated with this week's upper-level disturbance over the northern gulf waters will continue to bring scattered to numerous showers and thunderstorms across the Panhandle. Scattered showers have already been moving onshore along the Panhandle and Big Bend coastlines, and additional rounds of showers and thunderstorms will continue throughout the day peaking in the afternoon and evening hours (70-90% chance of rain). The Weather Prediction Center (WPC) is outlooking a **Marginal Risk (level 1 of 4) for Flash Flooding** along the Panhandle through today as repeated rounds of heavy downpours could lead to **localized flash flooding and ponding of water**. Some of these areas, especially coastal areas, have already seen locally heavy rainfall this week. Additional rounds of thunderstorms or training thunderstorms over these same areas could exacerbate any **localized flooding or lead to an earlier onset**. High pressure will re-establish itself over the Florida Peninsula leading to a typical summertime day throughout the rest of the state. Scattered showers and thunderstorms will develop along the sea breeze collisions this afternoon and evening, with the greatest chance over the interior Peninsula (45-70% chance of rain). Some drier air will filter into the Peninsula, especially along the Southeast Florida coastline and the Keys, which will keep thunderstorm activity more isolated in some places. Regardless, **any thunderstorm** that develops will be capable of producing frequent lightning, gusty winds and torrential downpours.

Warm and muggy conditions will expand nearly statewide, except for the Panhandle which will see slightly "cooler" conditions with elevated rain and cloud cover. High temperatures will reach the upper 80s to middle 90s this afternoon, and **heat index values** will reach **triple digits** nearly statewide. **Dangerously hot and humid conditions** will develop along and east of US-301 corridor as **heat index values of 106-110-degrees** can be expected and **Heat Advisories** will go into effect midday.

Showers and thunderstorms will generally continue throughout the evening hours before dissipating overnight. Mostly quiet conditions can be expected throughout the overnight hours before showers begin to move back onshore along the coastlines near sunrise Thursday morning (15-30% chance of rain). Low temperatures will fall into the middle 70s to lower 80s.





Tropical Weather

For the latest on the tropics, please visit the National Hurricane Center (NHC) at www.hurricanes.gov.

Tropical Storm Erin: As of 5:00 AM EDT, Erin was located about 1400 miles east of the Northern Leeward Islands and moving westward at 20 mph. This general motion is expected to continue into Thursday, with a west-northwestward motion beginning Thursday night and continuing into the weekend. On the forecast track, the center of Erin is likely to move near or just north of the northern Leeward Islands over the weekend. Maximum sustained winds are near 45 mph with higher gusts. Gradual strengthening is forecast to begin today, and Erin will likely become a hurricane by late Thursday or early Friday. *Erin poses no direct threat to Florida at this time but continues to be monitored.*

Northwestern Atlantic: A non-tropical area of low pressure located a few hundred miles southeast of Nova Scotia, Canada is still producing disorganized shower and thunderstorm activity to the south of its center. However, the system is now moving northward over cooler water, and the chances of subtropical or tropical development are diminishing. *This system poses no threat to Florida.*

*Formation chance through 48 hours...**low...near 0%.**

*Formation chance through 7 days...**low...near 0%.**

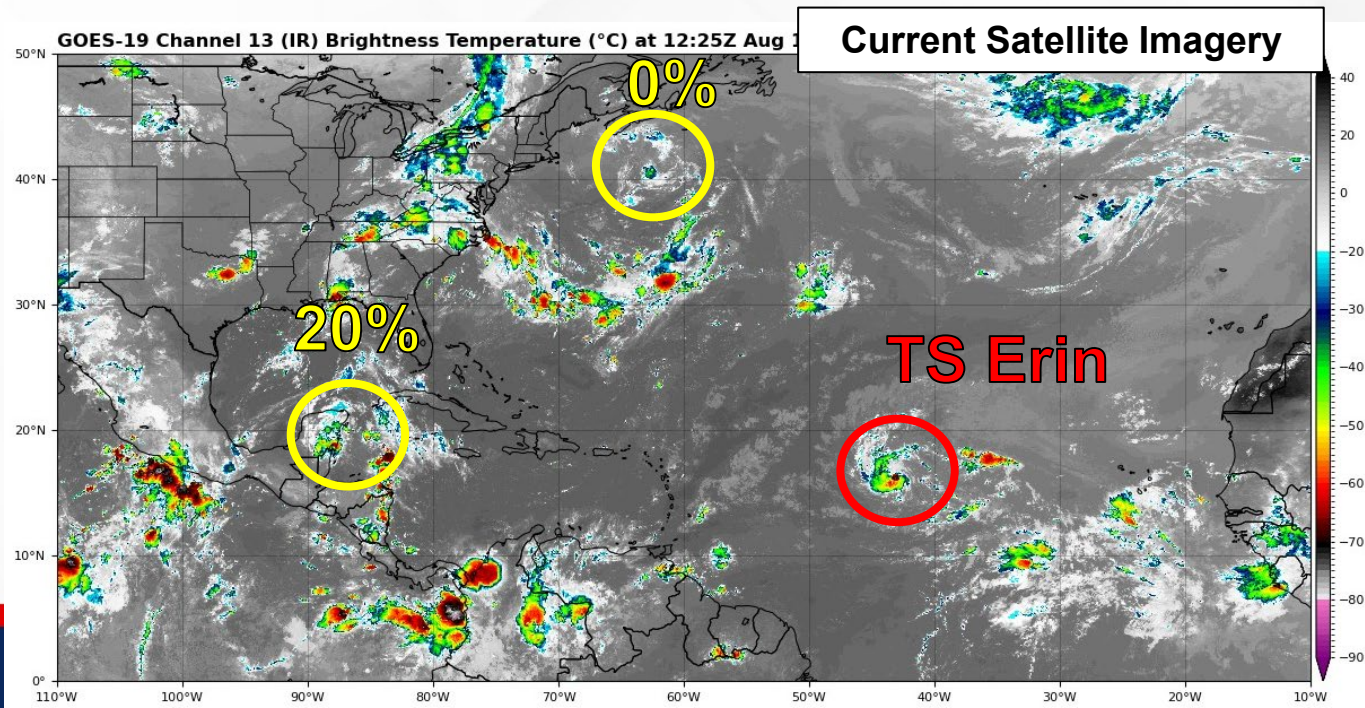
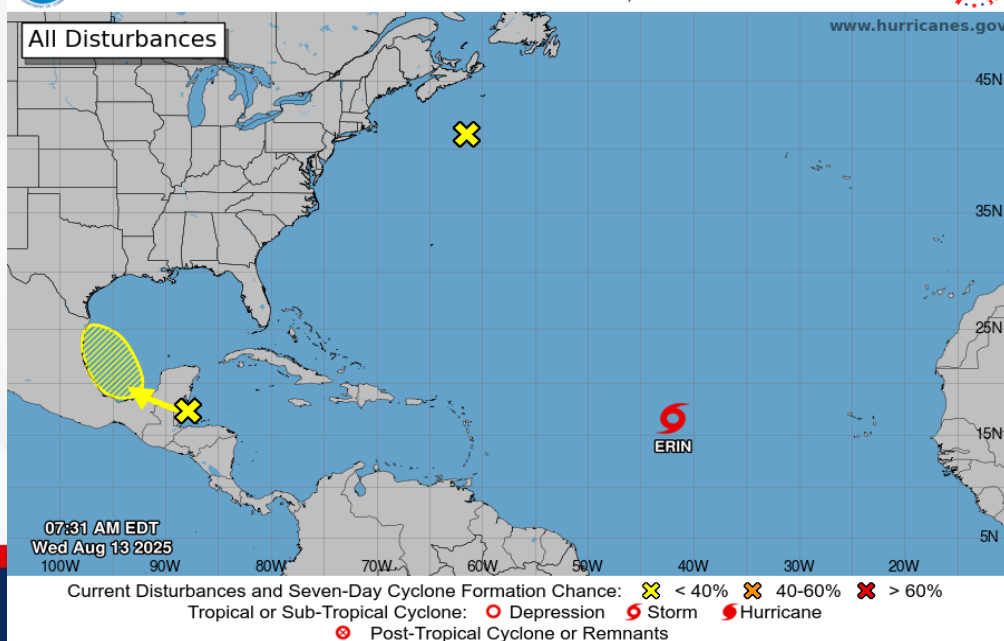
Southwestern Gulf: A tropical wave near the east coast of the Yucatan Peninsula is producing disorganized showers and thunderstorms this morning. This disturbance is forecast to move west-northwestward and cross the Yucatan Peninsula today with no significant increase in organization. Some development of this system is possible after it emerges across the southwestern Gulf beginning on Thursday while the system moves west-northwest or northwest at 10-15 mph. *This system poses no threat to Florida.*

*Formation chance through 48 hours...**low... 10%.**

*Formation chance through 7 days...**low...20%.**

Seven-Day Graphical Tropical Weather Outlook

National Hurricane Center Miami, Florida





Coastal Hazards & Hydrology

Rip Currents: Breezy onshore winds will continue to create a **high risk for rip currents** along all Panhandle beaches. East Coast beaches can expect a **moderate risk for rip currents**. For the latest Rip Current Outlook, visit www.weather.gov/beach.

Marine Hazards: Wave heights of 1-3' will persist for beaches across the state today, with these largest waves along Panhandle and Treasure Coast beaches.

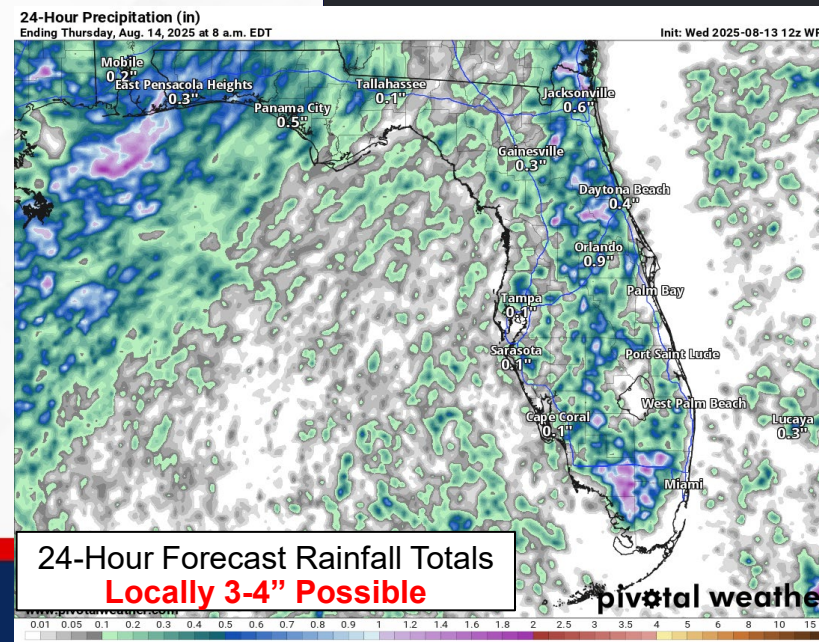
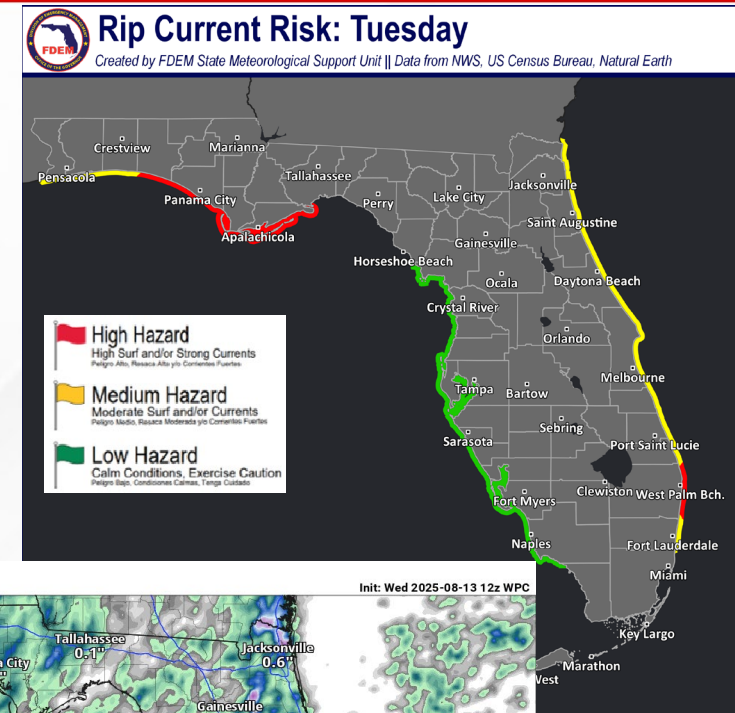
Red Tide was observed in one sample from Florida's Gulf Coast (Lee County) over the past week (valid 8/1).

Coastal Flooding: There is no risk for coastal flooding today.

Flash Flooding: The Weather Prediction Center (WPC) is outlooking a **Marginal Risk (level 1 of 4) for Flash Flooding** along the Florida Panhandle where lingering moisture associated with the upper-level disturbance this week will continue to fuel scattered to widespread showers and thunderstorms. Repeated rounds of locally heavy downpours, especially closer towards the coast, will lead to instances of **localized flash flooding and ponding of water**. Some of these areas, especially along the coast, have seen widespread rainfall the last few days. Additional rounds of repeated downpours or training thunderstorms could lead to an earlier onset of flash flooding and ponding of water. Rainfall totals of 1-2" can be expected, with **locally higher totals** upwards of 3-4" possible.

Riverine Flooding: The [St. Marks River near Newport](#), [Fisheating Creek at Palmdale](#), [Ocklawaha River at Rodman Dam](#) remain at Action Stage (bank-full) as recent heavy rainfall has resulted in some riverine response; however, these water levels continue to slowly decline. The [Blackwater River near Baker](#) could see water levels just barely reach Action Stage (bank-full) today or early tomorrow with additional rounds of rainfall. The river should then quickly fall below flood stage by Thursday afternoon. Rivers throughout the state remain generally in good condition, but any repeated heavier downpours could bring water level rises. For more information, visit the [River Forecast Center](#).

Lake Okeechobee's average elevation is 12.19 feet, which is within the operational band and is 1.74 feet **below** normal for this time of year.



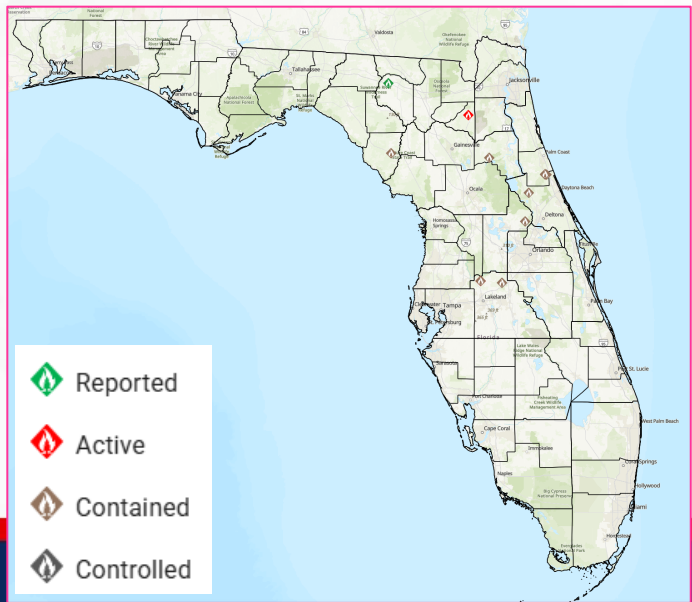
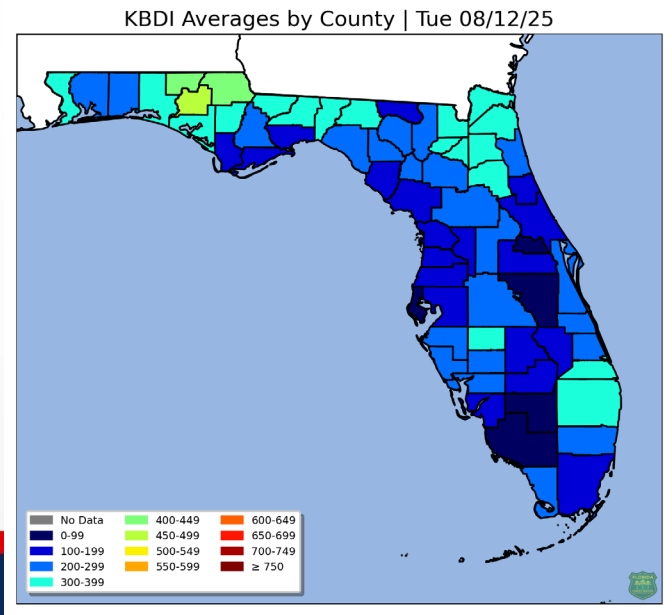
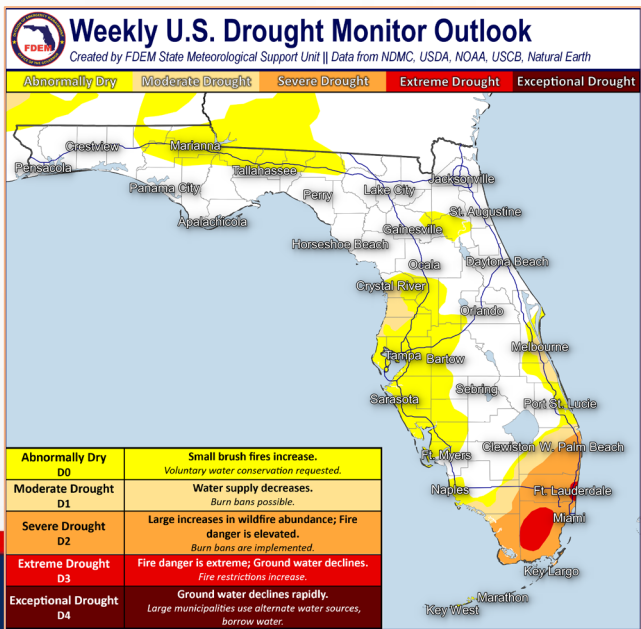


Drought & Fire Weather

Fire Weather: Widespread shower and thunderstorm activity developing along the Panhandle will keep the overall wildfire threat low. Relative humidity values will remain above critical thresholds across the state, but drier air will filter into the state due to high pressure establishing itself over the Florida Peninsula. Scattered showers and thunderstorms can be expected to develop along the sea breeze today. *Thunderstorms will be capable of producing frequent lightning and erratic winds.* According to the [Florida Forest Service](#), there are 12 active wildfires across the state burning approximately 183 acres.

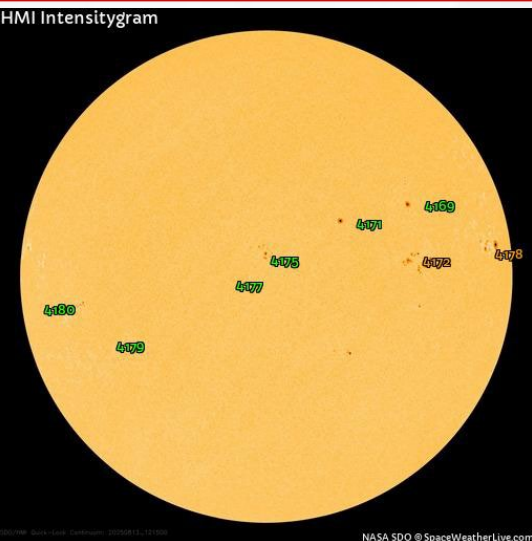
Drought: Very little positive changes were made during this week's drought monitor outlook. The Panhandle and interior portions of the Peninsula saw the greatest rainfall in the past two weeks totaling 6-10" of rain. Although Southeast Florida did see some beneficial rainfall, two-week rainfall departures still remain 2-3" below normal. As such, the **Severe drought (level 2 of 4)** remained untouched across the region and the **Extreme drought (level 3 of 4)** expanded across western Miami-Dade county. An **Extreme Drought** was also added to coastal regions of Broward county where most of the recent thunderstorm activity missed. Portions of the Nature Coast remain in **Moderate Drought (level 1 of 4)** where monthly rainfall totals are at a 2-4" deficit. Portions of Clay county in Northeast Florida did see a removal of the abnormally dry (emerging drought) conditions with recent heavy rainfall. Rainfall chances will remain elevated across the state this weekend and into next week with daily showers and thunderstorms which may alleviate some drought conditions.

The **Keetch-Byram Drought Index** average for Florida is **235 (+3)** on a scale from 0 (very wet) to 800 (very dry). There are **no** Florida counties that have an average KBDI above 500 (drought/increased fire danger).

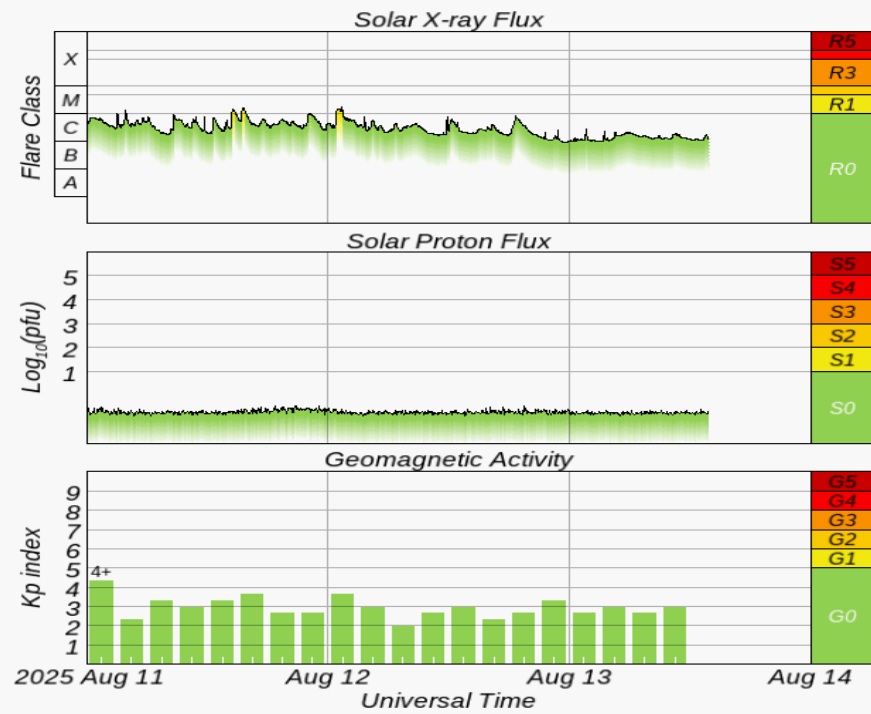
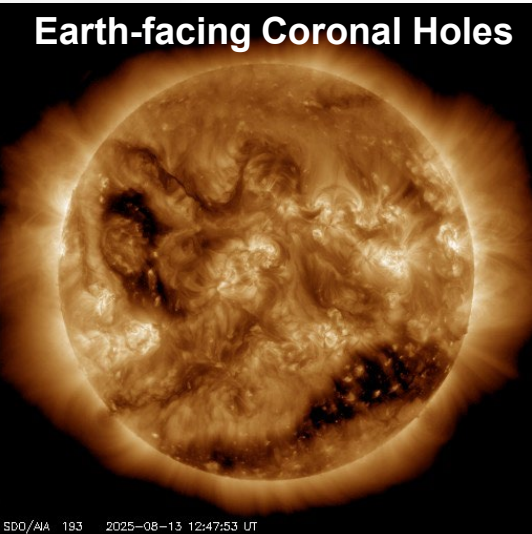




Space Weather



Current Sunspots



Solar Flare Risk	Active Watches & Warnings	Past 24 hours
M-class: 55%	Geomagnetic Storm:	C8 Solar Flare
X-class: 10%	Radiation Storm: None	No Radio Blackouts

48-Hour Geomagnetic Forecast	
8/13	8/14
Max Kp= 4 (G0)	Max Kp= 4 (G0)
Chance of minor activity = 10% severe activity = 1%	Chance of minor activity = 10% severe activity = 1%

Space Weather: Solar activity will remain at moderate levels through today with strong (M-class) solar flares likely and a slight chance for significant (X-class) solar flares. Solar activity remains driven by the complex magnetic field from sunspots #4172 and #4178, which are capable of producing M-class to X-class solar flares. Minor to moderate (R1-R2) radio blackouts will accompany any M-class solar flares and strong (R3) radio blackouts will accompany any X-class solar flares. Winds flowing from coronal holes will lead to an enhanced solar wind field through the end of the week. The Earth's geomagnetic field will remain at unsettled levels, with isolated periods of active conditions. The overall space threat to Florida is low.



SWO Communications Systems & Contact Information

Equipment	Contact	Status	Comments
Phone:	800-320-0519, 850-815-4001, 850-591-0071 (Backup Cell)	Operational	
Backup Landline:	850-487-3234, 850-487-3228	Operational	
Fax:	850-815-4979	Operational	
Email:	SWP@em.myflorida.com	Operational	
SWO Tracker:	https://apps.floridadisaster.org/SWO/	Operational	
SLERS:	DEM Statewide	Operational	
FNARS:	WGY974	Operational	
Federal NAWAS:	State Watch Office	Operational	
EMnet Message:	FL.000- State Watch Office	Operational	
EMnet Voice:	FL SWP- State Watch Office	Operational	
IPAWS:	LP.1 Stations via Emnet	Operational	
FIN:	SOFEOC	Operational	
Satellite Phones:	MSAT 888-890-5178 or Iridium 480-263-8838	Operational	
Website:	http://www.floridadisaster.org	Operational	

Users wishing to subscribe (approval pending) to this distribution list, register at:

https://public.govdelivery.com/accounts/FLDEM/subscriber/new?topic_id=Morning_SITREP