



# **Florida Division of Emergency Management State Watch Office**

## **Morning Situation Report**

Thursday, August 7, 2025



# State Emergency Operations Center Activation Level

Level 2 Activation



# SERT On-Call Personnel

Position	Personnel	Phone	Email
Operations Chief	Amy Godsey	(850) 519-8483	<a href="mailto:Amy.Godsey@em.myflorida.com">Amy.Godsey@em.myflorida.com</a>
Watch Officer	Caitlyn Gillespie	(850) 688-2119	<a href="mailto:Caitlyn.Gillespie@em.myflorida.com">Caitlyn.Gillespie@em.myflorida.com</a>
Duty Officer	Jeremy Whitt	(850) 755-8521	<a href="mailto:Jeremy.Whitt@em.myflorida.com">Jeremy.Whitt@em.myflorida.com</a>
Operations Officer- Day	Lauren Warfield	(850) 815-4001	<a href="mailto:SWP@em.myflorida.com">SWP@em.myflorida.com</a>
Operations Officer- Swing	Zachary Remante	(850) 815-4001	<a href="mailto:SWP@em.myflorida.com">SWP@em.myflorida.com</a>
Operations Officer- Night	Jim Lawhon	(850) 815-4001	<a href="mailto:SWP@em.myflorida.com">SWP@em.myflorida.com</a>
Meteorologist	Evan Newman	(850)-241-5606	<a href="mailto:Evan.Newman@em.myflorida.com">Evan.Newman@em.myflorida.com</a>
Plans Chief	Kaylynn Perry	(850) 254-5657	<a href="mailto:Plans_Command@em.myflorida.com">Plans_Command@em.myflorida.com</a>
Logistics Chief	Timothy Conroy	(850) 524-8699	<a href="mailto:timothy.conroy@em.myflorida.com">timothy.conroy@em.myflorida.com</a>
Human Services Director	Pam Hughes	(850) 528-5638	<a href="mailto:Pamela.Hughes@em.myflorida.com">Pamela.Hughes@em.myflorida.com</a>
Emergency Services	Tim Kenyon	(850) 591-7732	<a href="mailto:Tim.Kenyon@em.myflorida.com">Tim.Kenyon@em.myflorida.com</a>
Infrastructure Branch Director	Christina Goetzman	(850) 519-8581	<a href="mailto:Christina.Goetzman@em.myflorida.com">Christina.Goetzman@em.myflorida.com</a>
ESF 8 On-Call	Hunter Stafford	(866) 786-4673	<a href="mailto:DLDOHDutyOfficers@flhealth.gov">DLDOHDutyOfficers@flhealth.gov</a>
Public Information Officer	Stephanie Hartman	(850) 570-3053	<a href="mailto:Stephanie.Hartman@em.myflorida.com">Stephanie.Hartman@em.myflorida.com</a>
DEM Finance and Admin	Jeremy Smith	(850) 273-1273	<a href="mailto:Jeremy.Smith@em.myflorida.com">Jeremy.Smith@em.myflorida.com</a>



# Response Regional Coordination Team



Team	County Location	Visits
Region 1: Jim Roberts	Walton	SERT POD Train- the-Trainer
Region 2: Enrique Gaston	Walton	SERT POD Train- the-Trainer
Region 3: Glen Hammers	Walton	SERT POD Train- the-Trainer
Region 4: Tara Kostich	Out of Service	Leave ( See Coverage)
Region 5: Austin Beeghly	Walton, Seminole	Return to Region 5 Travel
Region 6: Paul Siddall	Pinellas, Hillsborough	ESF 12 Meeting / Water Resources Call / USAR Meeting
Region 7: Kathryn Hollenbeck	Leon	G-141 Course
Region 8: Mason Kozac	N/A	N/A
Region 9: Vacant	N/A	N/A
Region 10: Claudia Baker	Broward	LSA Meeting

Region 2 Coverage Provided by Recovery Coordinator 2  
Region 3 & 4 Coverage Provided by Recovery Coordinator 4  
Region 5 Coverage Provided by Recovery Coordinator 5  
Region 7 Coverage Provided by Response Coordinator 6  
Region 8 Coverage Provided by Recovery Coordinator 8  
Region 9 Coverage Provided by Recovery Coordinator 9

## Status

Normal Operations

Out of Service / Unavailable



# Recovery Regional Coordination Team

Team	County Location	Status / Activities
Region 1: Allison Blevins	In Region	Off & Monitoring
Region 2: Justin Lazzara	Jefferson	County EM Meeting: Recovery/Mitigation
Region 3: Amber Durden	Alachua	Training: FL-681
Region 4: Joshua Saunders	Alachua	Training: FL-681
Region 5: Elizabeth Caison	Seminole	LEPC & FEPA Meetings
Vacant	N/A	See Coverage
Region 6: Vacant		
Region 7: Antonio Zapata	Polk	County EM Meeting: Recovery/Mitigation
Region 8: Ja-Pheth Butler-Miller	Monroe	F-ROC Tour
Region 9: Jacob Ginsberg	Sarasota	Training: Independent Studies / Professional Development
Region 10: Vacant	N/A	See Coverage

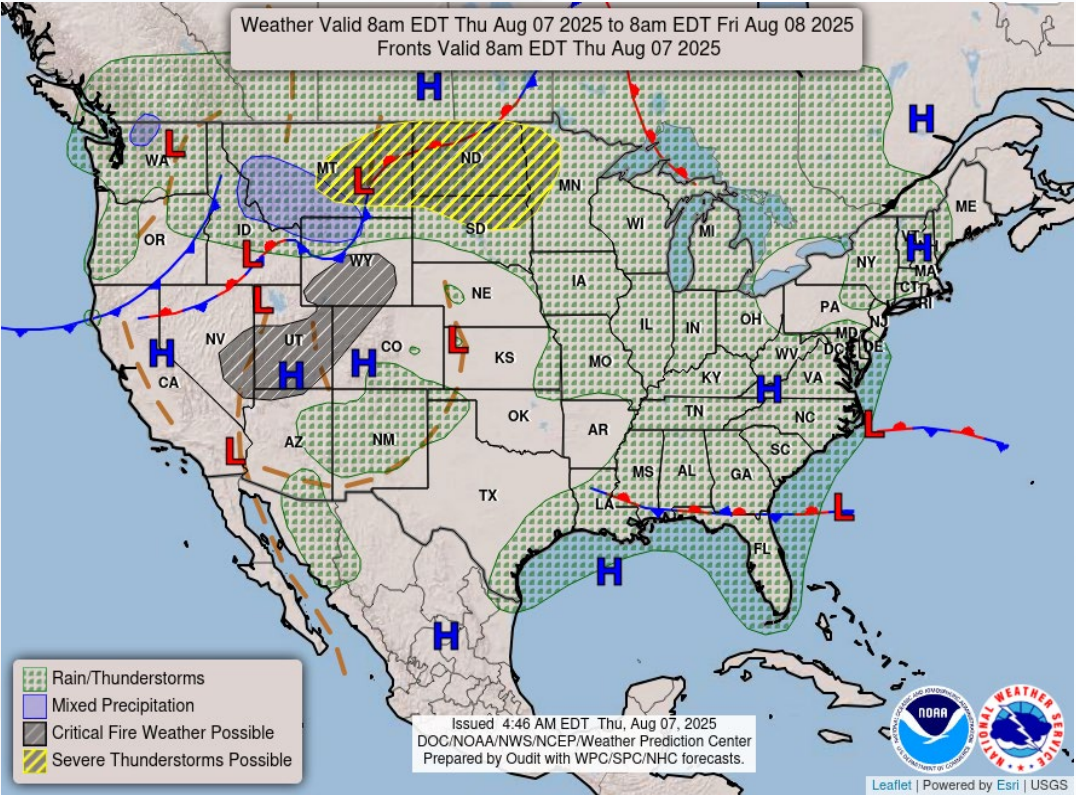
Region 6 Coverage Provided by Recovery Coordinator 5  
Region 10 Coverage Provided by Recovery Coordinator 8

Status
Normal Operations
In Region / Delayed Response
Deployed / Delayed Response
Out of Service / Unavailable



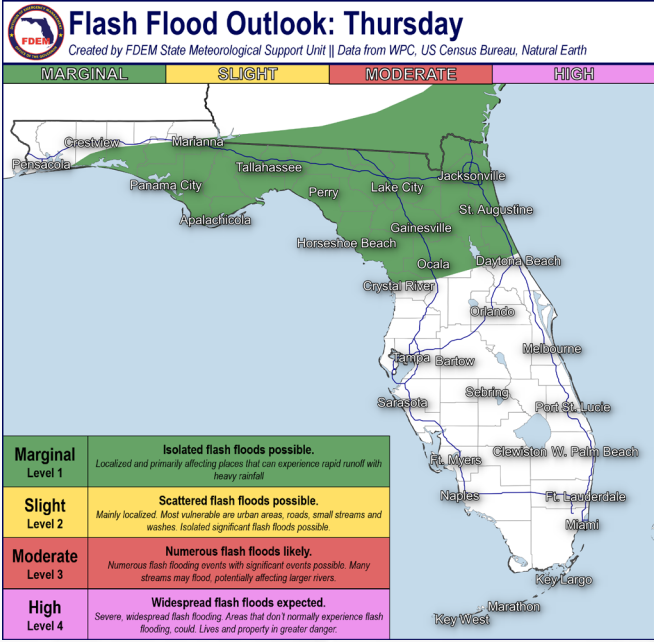
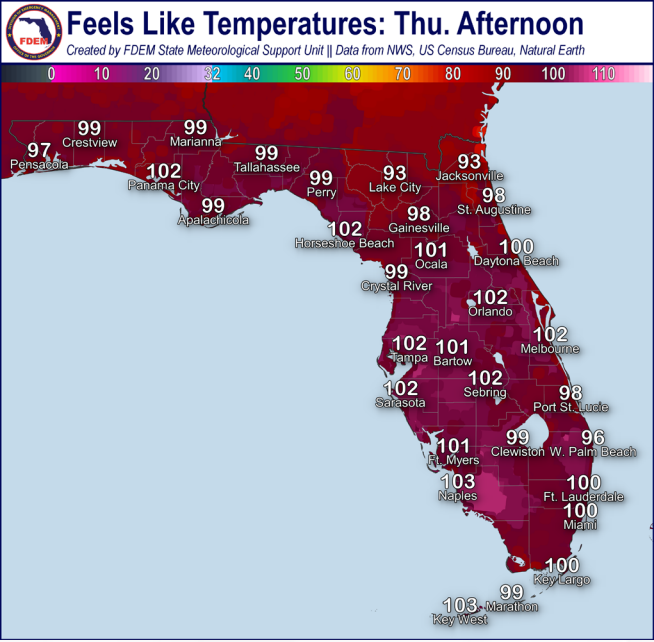


# Meteorology Summary



Today's Weather Map

Threat	R1	R2	R3	R4	R5	R6	R7	R8	R9	R10
Lightning	M	M	H	H	H	H	H	H	H	H
Tornado										
Damaging Wind	L	L	L	L	L	L	L	L	L	L
Hail										
Flash Flooding	L	L	M	M	L	L	L	L	L	L
Excessive Heat	M	M	M	M	M	M	M	M	M	M
Wildfire										
Fog (Overnight)										
Rip Currents	M	M	L	M	M	L		H	L	L
Lake Okeechobee Elevation	12.03 ft. (1.81 ft. <u>Below</u> Normal)									
Keetch-Byram Drought Index	309 (-14) on a scale from 0 (very moist) to 800 (very dry)									





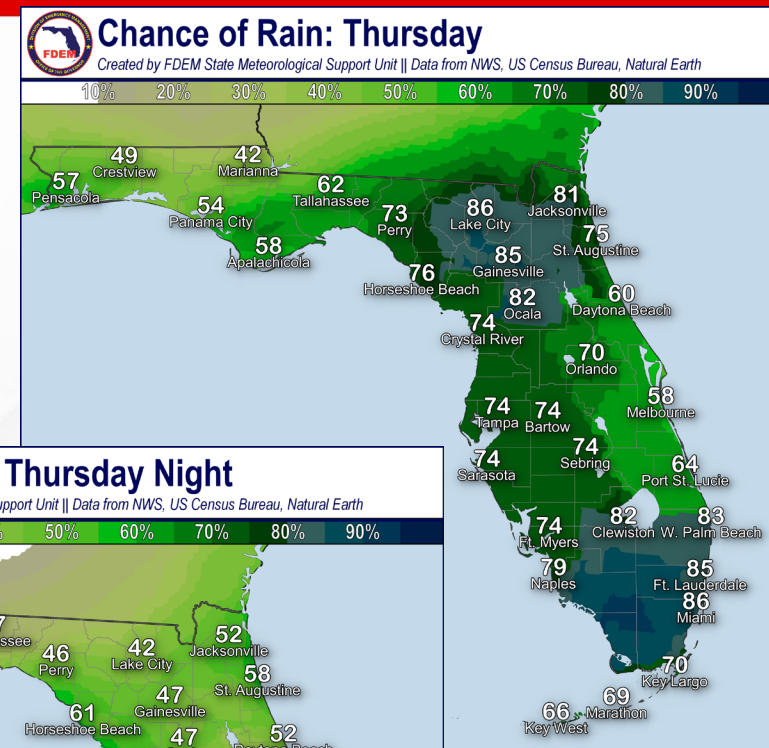
# Meteorology Summary

## Statewide Overview, Next 24 Hours:

Another wet and active weather day is on tap across the Sunshine state as the decaying frontal boundary remains draped across Northeast and East-Central Florida today. This will help to focus the greatest chance of rain across northeast Florida where, in tandem with a predominate Atlantic sea breeze, will focus shower and thunderstorm activity across interior Northeast Florida and the Suwannee River Valley (80-90% chance of rain). The Weather Prediction Center (WPC) has outlooked much of North Florida under a **Marginal Risk (level 1 of 4) for Flash Flooding** today, extending south to SR 40 and the Nature Coast. Recent heavy rainfall and slow-moving storms today will promote **localized flash flooding and ponding of water**, especially in urban and poor drainage locations. Across the Peninsula, scattered showers and thunderstorms are moving onshore the Space Coast this morning. Additional showers and thunderstorms will initiate across interior portions of the Peninsula with the help of daytime heating this afternoon, slowly moving westward throughout the day (60-85% chance of rain). Any thunderstorm across the state could become **locally strong to severe** and capable of producing frequent lightning, gusty winds, and heavy downpours.

Relatively cooler temperatures are expected statewide compared to previous days with abundant cloud cover and elevated rain chances, though **hot and humid conditions** will still be around. Afternoon high temperatures will climb into the upper 80s to middle 90s statewide as **heat index values** remain capped in the **middle 90s to lower 100s**.

The easterly flow across the state will keep showers and thunderstorms over the West Coast and Big Bend this evening before moving offshore and gradually dissipating after midnight (50-60% chance of rain). Some lingering showers and thunderstorms may remain over portions of the East Coast as well. Low temperatures will reach into the lower to upper 70s statewide.







# Tropical Weather

For the latest on the tropics, please visit the National Hurricane Center (NHC) at [www.hurricanes.gov](http://www.hurricanes.gov).

**Tropical Storm Dexter:** As of 5:00 AM AST, Dexter is located about 425 miles South of Newfoundland and moving east-northeastward at 18 mph. This motion is expected to continue over the next few days. Maximum sustained winds are at 50 mph with higher gusts. Strengthening is forecast during the next 48 hours as the system becomes extratropical. *Dexter poses no direct threat to Florida.*

**Off the Southeast U.S. :** A weak area of low pressure located a couple hundred miles off the coast of the southeastern U.S. is producing minimal showers and thunderstorms. Some slow development is possible over the weekend while the system meanders northward, remaining well off the east coast of the U.S. By early next week, the low is expected to become extratropical, ending its chances for development. *This system poses no direct threat to Florida at this time; however, it could bring elevated rain chances and rip currents along portions of the East Coast later in the week and into the weekend.*

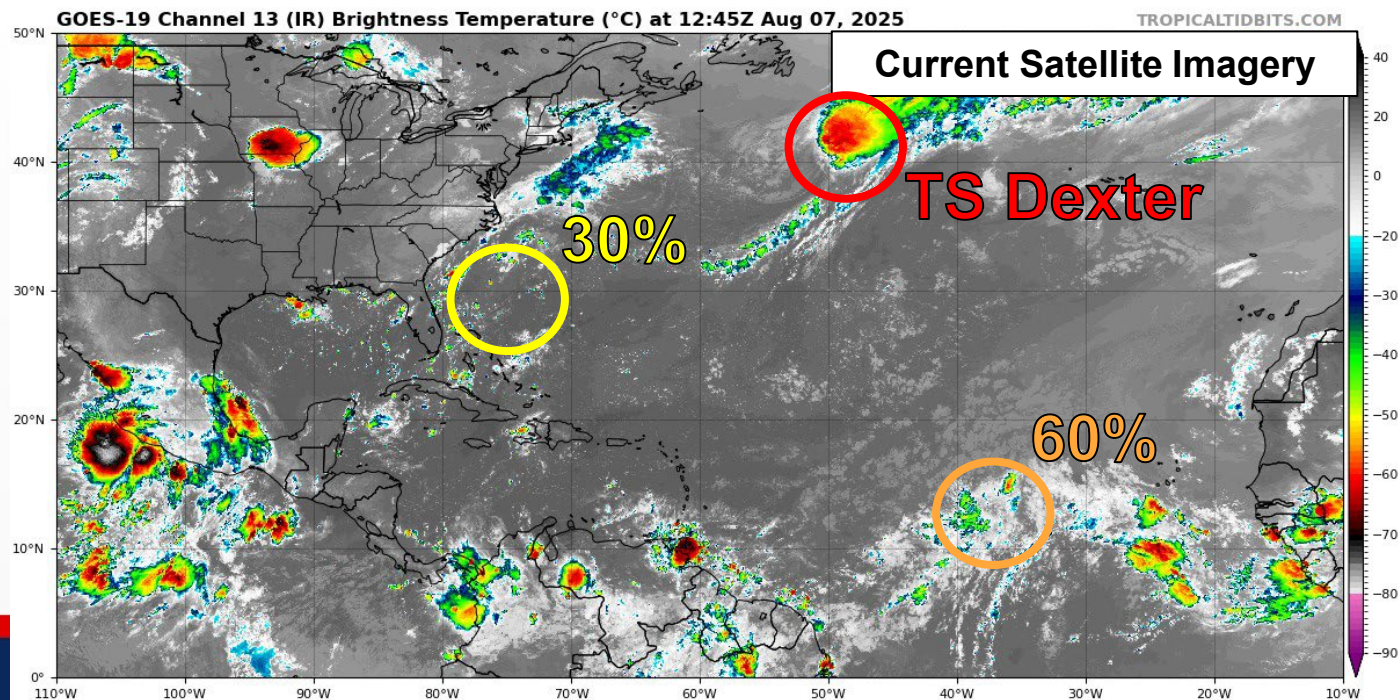
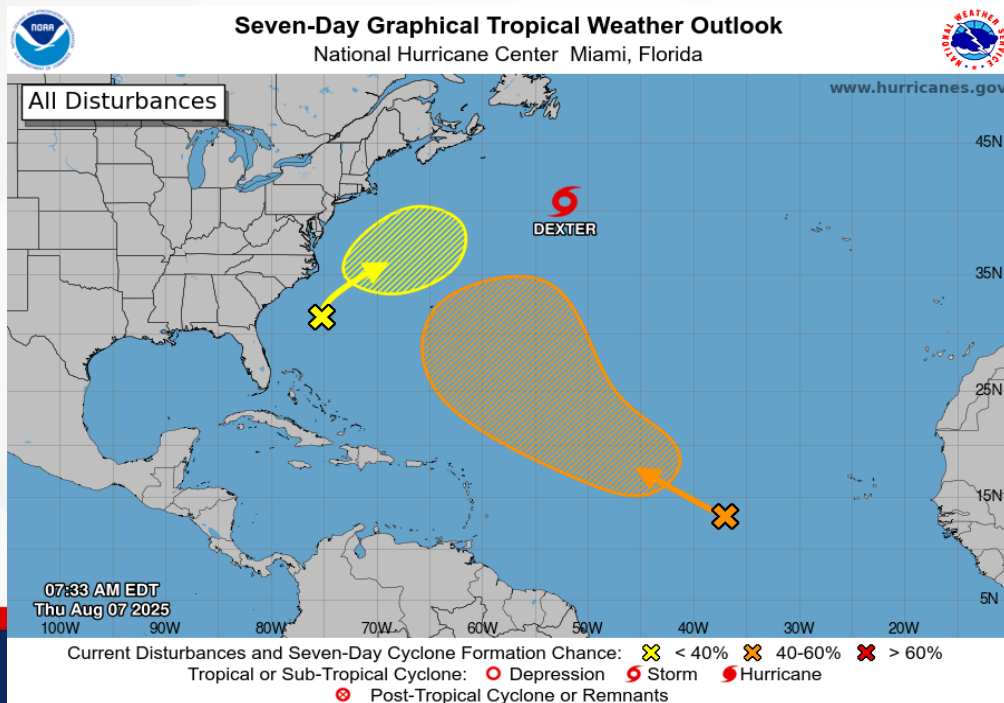
\*Formation chance through 48 hours...**low...near 0%.**

\*Formation chance through 7 days...**low...30%.**

**Central Tropical Atlantic:** A tropical wave over the central tropical Atlantic continues to produce disorganized shower and thunderstorm activity. Environmental conditions are forecast to be conducive for gradual development during the next few days. A tropical depression could form late this week or over the weekend as the system moves generally west-northwestward to northwestward across the central tropical or subtropical Atlantic. *This system poses no threat to Florida at this time but continues to be monitored.*

\*Formation chance through 48 hours...**low... 10%.**

\*Formation chance through 7 days...**medium...60%.**







# Coastal Hazards & Hydrology

**Rip Currents:** There is a **moderate to high risk for rip currents** along the Florida East Coast. A **moderate rip current risk** continues for numerous Panhandle beaches. For the latest Rip Current Outlook, visit [www.weather.gov/beach](http://www.weather.gov/beach).

**Marine Hazards:** Wave heights will return to 2-3' along East Coast beaches while West Coast beaches will see wave heights of 1'.

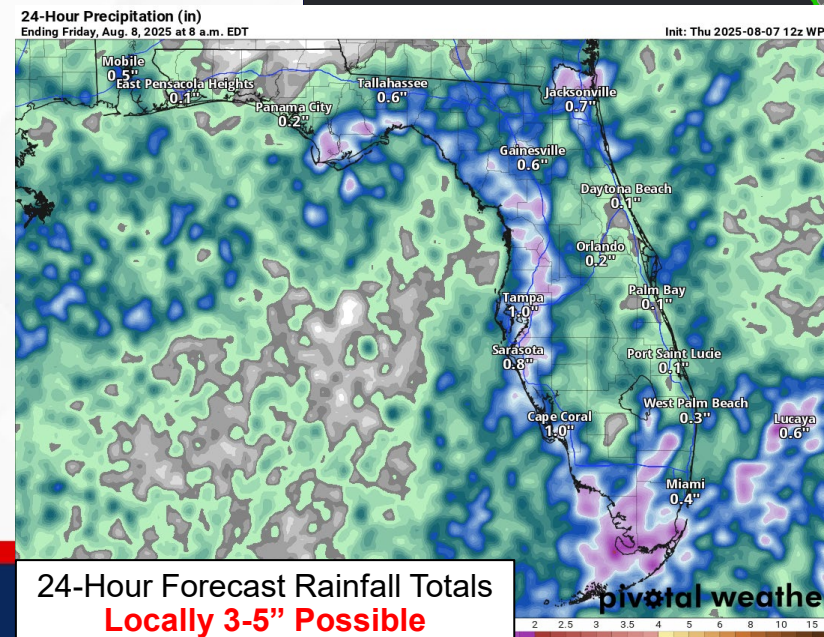
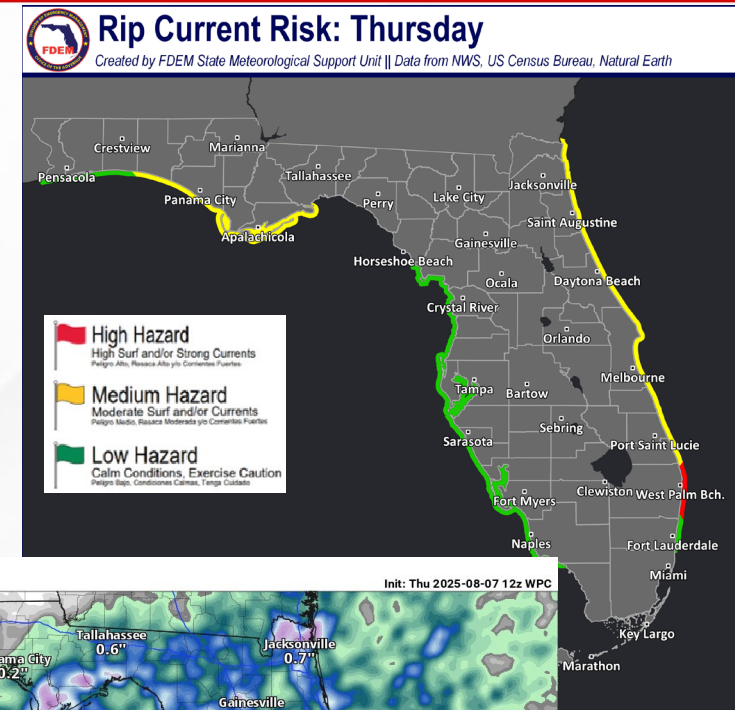
**Red Tide** was observed in one sample from Florida's Gulf Coast (Lee County) over the past week (valid 8/1).

**Coastal Flooding:** There is no risk for coastal flooding today.

**Flash Flooding:** Multiple rounds of showers and thunderstorms, especially some that are slow-moving, will lead to an increased **risk for localized flash flooding** today. Abundant moisture will help to fuel these showers and thunderstorms along the decaying cold front, helping to increase coverage and extent. The Weather Prediction Center (WPC) is outlooking a **Marginal Risk (level 1 of 4) for Flash Flooding** across the I-10 corridor, south to SR 40 and the Nature Coast. Rainfall totals of 1-3" can be expected, with **locally higher totals** upwards of 3-5" possible especially across the Suwannee River Valley and Nature Coast. Training could lead to an earlier onset to any possible flooding with repeated rounds of heavy downpours over the same areas. Although much of Central and South Florida are not under an organized risk for flash flooding, any slow-moving thunderstorms could produce localized flash flooding, especially in urban and poor-drainage locations.

**Riverine Flooding:** The [St. Marks River near Newport](#), [Sopchoppy River near Sopchoppy](#), and [Bruce Creek near Redbay](#) have risen into Action Stage (bank-full) following recent heavy rainfall over the last few days. Rivers across the Panhandle are in good condition right now; however, any locally heavy downpours over the river basin could lead to a quick-response rise. Any heavy rainfall that occurs in southern Georgia in the river headwaters will then flow southward through the basin into Florida. [Fisheating Creek at Palmdale](#) remains within Action Stage as well, but is forecast to hover below flood stage and Action Stage over the next day or so. For more information, visit the [River Forecast Center](#).

**Lake Okeechobee's** average elevation is 12.03 feet, which is within the operational band and is 1.81 feet **below** normal for this time of year.



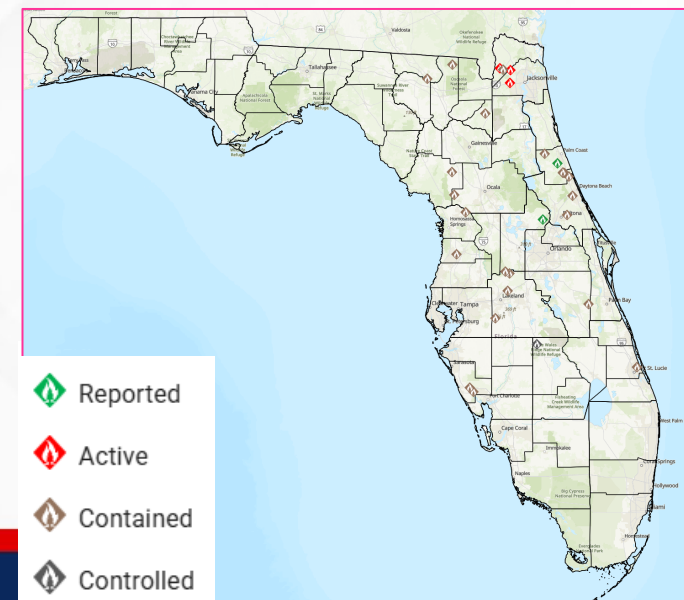
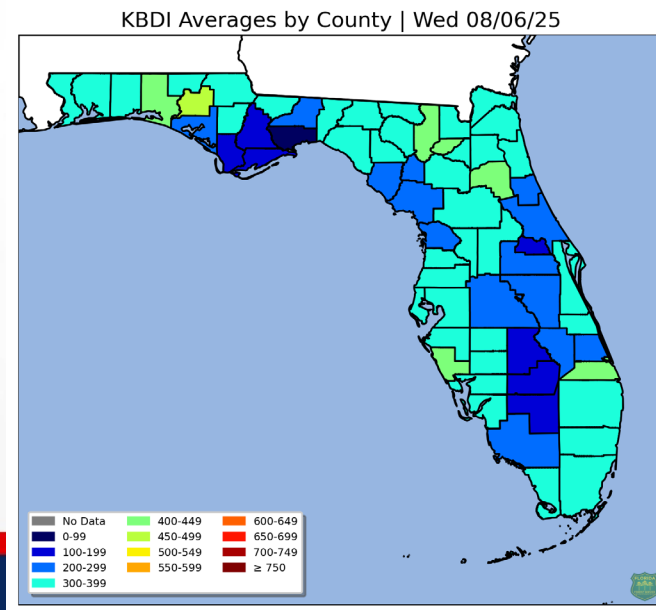
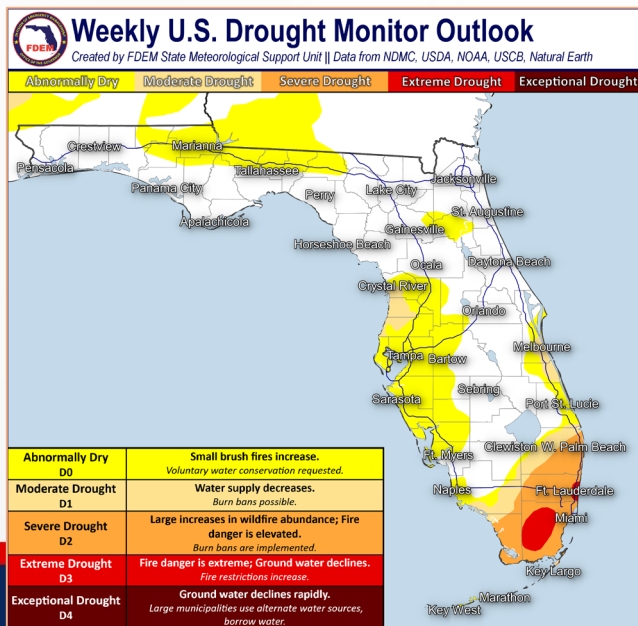


# Drought & Fire Weather

**Fire Weather:** Widespread shower and thunderstorm activity can be expected across North Florida today keeping the overall wildfire threat very low. Scattered to numerous showers and thunderstorms across the interior Peninsula can be expected along the sea breeze. Plenty of moisture across the state will keep relative humidity values well above critical thresholds. *Thunderstorms will be capable of producing frequent lightning and erratic winds.* According to the [Florida Forest Service](#), there are 35 active wildfires across the state burning approximately 478 acres.

**Drought:** Very little positive changes were made during this week's drought monitor outlook. The Panhandle and interior portions of the Peninsula saw the greatest rainfall in the past two weeks totaling 6-10" of rain. Although Southeast Florida did see some beneficial rainfall, two-week rainfall departures still remain 2-3" below normal. As such, the **Severe drought (level 2 of 4)** remained untouched across the region and the **Extreme drought (level 3 of 4)** expanded across western Miami-Dade county. An **Extreme Drought** was also added to coastal regions of Broward county where most of the recent thunderstorm activity missed. Portions of the Nature Coast remain in **Moderate Drought (level 1 of 4)** where monthly rainfall totals are at a 2-4" deficit. Portions of Clay county in Northeast Florida did see a removal of the abnormally dry (emerging drought) conditions with recent heavy rainfall. Rainfall chances will remain elevated across the state this weekend and into next week with daily thunderstorm chances which may alleviate some drought conditions.

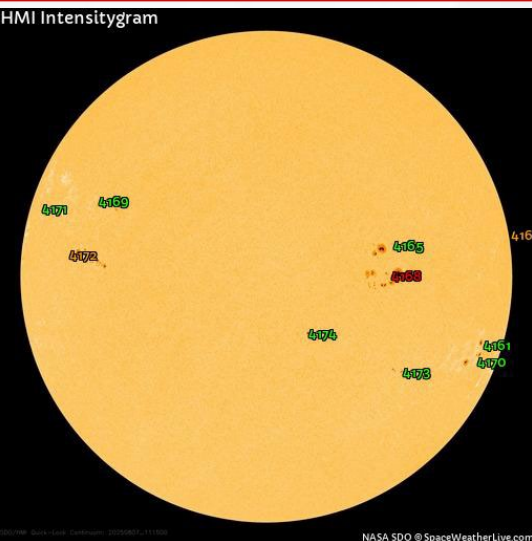
The **Keetch-Byram Drought Index** average for Florida is **309 (-14)** on a scale from 0 (very wet) to 800 (very dry). There are **no** Florida counties that have an average KBDI above 500 (drought/increased fire danger).



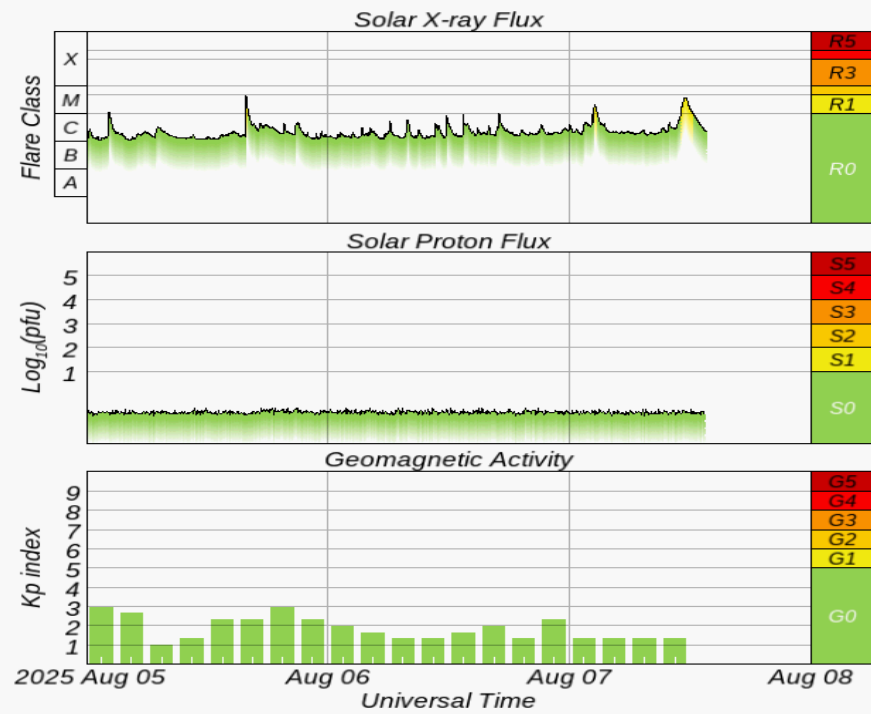
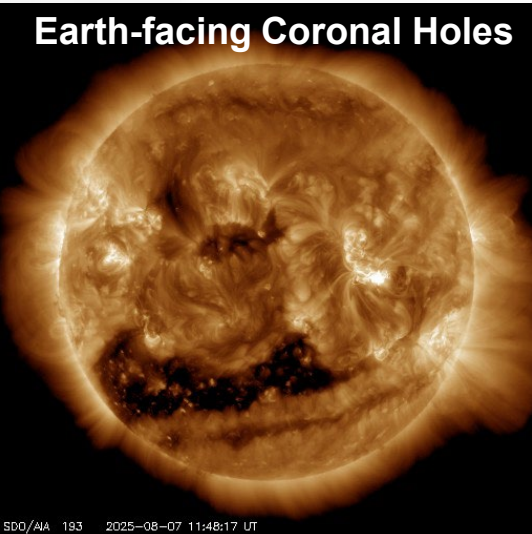




# Space Weather



Current Sunspots



Solar Flare Risk	Active Watches & Warnings	Past 24 hours
M-class: 55%	Geomagnetic Storm: <b>G2 (Moderate) Watch (8/8)</b>	M4 Solar Flare
X-class: 10%	Radiation Storm: None	R1 Radio Blackouts
48-Hour Geomagnetic Forecast		
8/7		8/8
Max Kp= 4 (G0)		Max Kp= 6 (G2)
Chance of minor activity = 5% severe activity = 1%		Chance of minor activity = 35% severe activity = 1%

**Space Weather:** Sunspot #4168 has continued to remain active with another M-class solar flare that produced a minor (R1) radio blackout. Additional strong to significant (M-class to X-class) solar flares will be possible from sunspot #4168 due to its magnetic field. Minor to moderate (R1-R2) radio blackouts will accompany any M-class solar flares and strong (R3) radio blackouts will accompany any X-class solar flares. Solar wind conditions will remain nominal on Thursday before increasing on Friday with the arrival of Tuesday's coronal mass ejection (CME) associated with sunspot #4168. This will keep the solar wind enhanced into the weekend. The Earth's geomagnetic field will remain at quiet conditions Thursday, turning more active Friday with the arrival of the CME. A G2 (Moderate) watch has been issued. The overall space weather threat to Florida remains low.





# SWO Communications Systems & Contact Information

Equipment	Contact	Status	Comments
Phone:	800-320-0519, 850-815-4001, 850-591-0071 (Backup Cell)	Operational	
Backup Landline:	850-487-3234, 850-487-3228	Operational	
Fax:	850-815-4979	Operational	
Email:	<a href="mailto:SWP@em.myflorida.com">SWP@em.myflorida.com</a>	Operational	
SWO Tracker:	<a href="https://apps.floridadisaster.org/SWO/">https://apps.floridadisaster.org/SWO/</a>	Operational	
SLERS:	DEM Statewide	Operational	
FNARS:	WGY974	Operational	
Federal NAWAS:	State Watch Office	Operational	
EMnet Message:	FL.000- State Watch Office	Operational	
EMnet Voice:	FL SWP- State Watch Office	Operational	
IPAWS:	LP.1 Stations via Emnet	Operational	
FIN:	SOFEOC	Operational	
Satellite Phones:	MSAT 888-890-5178 or Iridium 480-263-8838	Operational	
Website:	<a href="http://www.floridadisaster.org">http://www.floridadisaster.org</a>	Operational	

Users wishing to subscribe (approval pending) to this distribution list, register at:

[https://public.govdelivery.com/accounts/FLDEM/subscriber/new?topic\\_id=Morning\\_SITREP](https://public.govdelivery.com/accounts/FLDEM/subscriber/new?topic_id=Morning_SITREP)