



# **Florida Division of Emergency Management State Watch Office**

## **Morning Situation Report**

Saturday, August 2, 2025



# State Emergency Operations Center Activation Level

Level 2 Activation



# SERT On-Call Personnel

Position	Personnel	Phone	Email
Operations Chief	Amy Godsey	(850) 519-8483	<a href="mailto:Amy.Godsey@em.myflorida.com">Amy.Godsey@em.myflorida.com</a>
Watch Officer	Sam Walters	(850) 519-8638	<a href="mailto:Sam.Walters@em.myflorida.com">Sam.Walters@em.myflorida.com</a>
Duty Officer	Jay Griffin	(850) 524-4094	<a href="mailto:Kellen.Griffin-Jay@em.myflorida.com">Kellen.Griffin-Jay@em.myflorida.com</a>
Operations Officer- Day	Daniel Leader	(850) 815-4001	<a href="mailto:SWP@em.myflorida.com">SWP@em.myflorida.com</a>
Operations Officer- Swing	Zachary Remante	(850) 815-4001	<a href="mailto:SWP@em.myflorida.com">SWP@em.myflorida.com</a>
Operations Officer- Night	Matthew Peloso	(850) 815-4001	<a href="mailto:SWP@em.myflorida.com">SWP@em.myflorida.com</a>
Meteorologist	Caitlyn Gillespie	(850) 688-2119	<a href="mailto:Caitlyn.Gillespie@em.myflorida.com">Caitlyn.Gillespie@em.myflorida.com</a>
Plans Chief	Kaylynn Perry	(850) 254-5657	<a href="mailto:Plans_Command@em.myflorida.com">Plans_Command@em.myflorida.com</a>
Logistics Chief	Christina Goetzman	(850) 519-8581	<a href="mailto:Christina.Goetzman@em.myflorida.com">Christina.Goetzman@em.myflorida.com</a>
Human Services Director	Pam Hughes	(850) 528-5638	<a href="mailto:Pamela.Hughes@em.myflorida.com">Pamela.Hughes@em.myflorida.com</a>
Emergency Services	Tim Kenyon	(850) 591-7732	<a href="mailto:Tim.Kenyon@em.myflorida.com">Tim.Kenyon@em.myflorida.com</a>
Infrastructure Branch Director	Christina Goetzman	(850) 519-8581	<a href="mailto:Christina.Goetzman@em.myflorida.com">Christina.Goetzman@em.myflorida.com</a>
ESF 8 On-Call	Brandon Gore	(866) 786-4673	<a href="mailto:DLDOHDutyOfficers@flhealth.gov">DLDOHDutyOfficers@flhealth.gov</a>
Public Information Officer	Stephanie Hartman	(850) 570-3053	<a href="mailto:Stephanie.Hartman@em.myflorida.com">Stephanie.Hartman@em.myflorida.com</a>
DEM Finance and Admin	Jeremy Smith	(850) 273-1273	<a href="mailto:Jeremy.Smith@em.myflorida.com">Jeremy.Smith@em.myflorida.com</a>



# Response Regional Coordination Team



Team	County Location	Visits
Region 1: Jim Roberts	In Region	On - Call Status
Region 2: Enrique Gaston	In Region	On - Call Status
Region 3: Glen Hammers	In Region	On - Call Status
Region 4: Tara Kostich	In Region	On - Call Status
Region 5: Austin Beeghly	In Region	On - Call Status
Region 6: Paul Siddall	In Region	On - Call Status
Region 7: Kathryn Hollenbeck	In Region	On - Call Status
Region 8: Mason Kozac	Vacant	N/A
Region 9: Vacant	Vacant	N/A
Region 10: Claudia Baker	In Region	On - Call Status

Region 8 Coverage Provided by Recovery Coordinator 8

Region 9 Coverage Provided by Recovery Coordinator 9

## Status

Normal Operations

Out of Service / Unavailable



# Recovery Regional Coordination Team

Team	County Location	Status / Activities
Region 1: Allison Blevins	In Region	Off & Monitoring
Region 2: Justin Lazzara	Out of Region	Off
Region 3: Vacant	N/A	See Coverage
Region 4: Joshua Saunders	In Region	Off & Monitoring
Region 5: Elizabeth Caison	In Region	Off & Monitoring
Vacant	N/A	See Coverage
Region 6: Vacant		
Region 7: Antonio Zapata	In Region	Off & Monitoring
Region 8: Ja-Pheth Butler-Miller	In Region	On - Call Coverage for R8
Region 9: Jacob Ginsberg	In Region	On - Call Coverage for R9
Region 10: Vacant	N/A	See Coverage

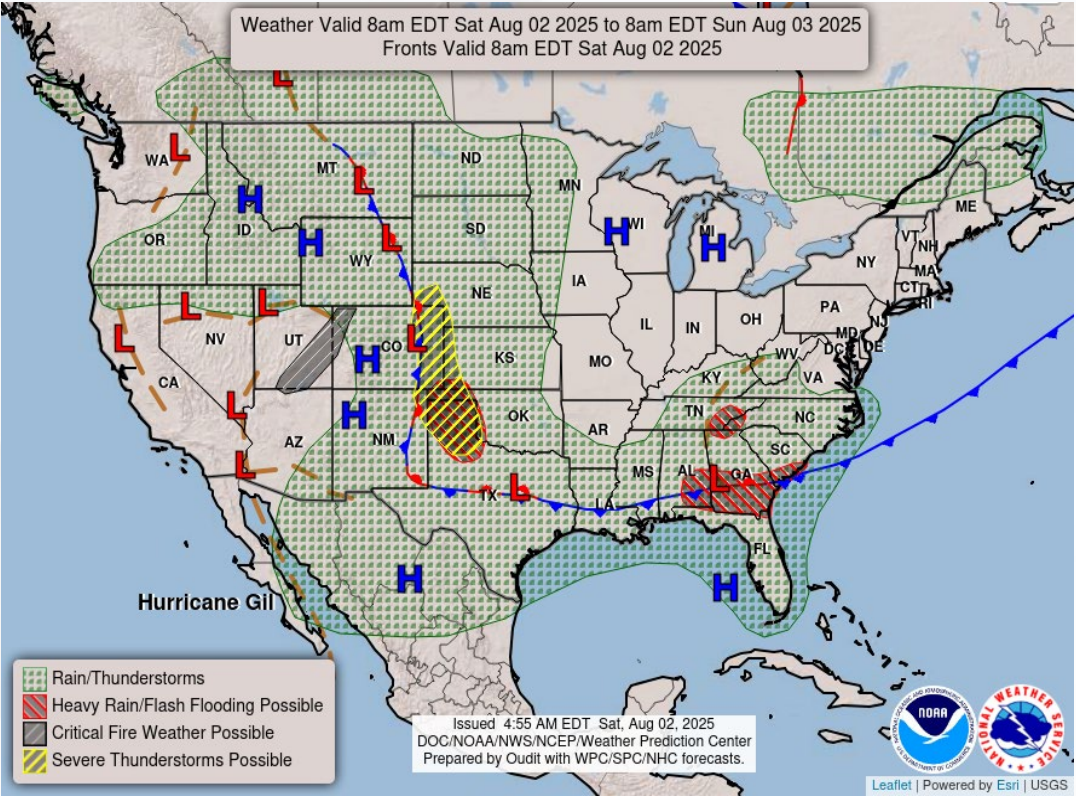
Region 3 Coverage Provided by Recovery Coordinator 2 & 4  
Region 6 & 4 Coverage Provided by Recovery Coordinator 5  
Region 10 Coverage Provided by Recovery Coordinator 8

Status
Normal Operations
In Region / Delayed Response
Deployed / Delayed Response
Out of Service / Unavailable



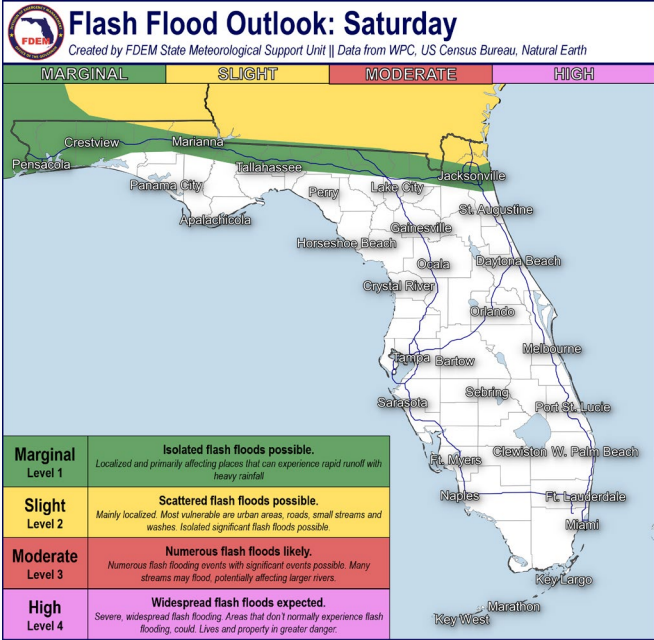
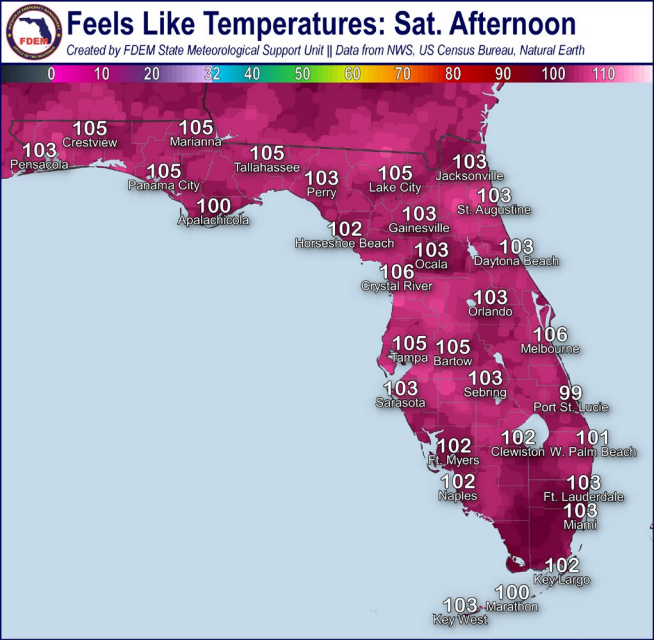


# Meteorology Summary



Today's Weather Map

Threat	R1	R2	R3	R4	R5	R6	R7	R8	R9	R10
Lightning	H	H	H	H	H	M	M	M	M	L
Tornado										
Damaging Wind	L	L	L	L	L	L	L	L	L	L
Hail										
Flash Flooding	L	L	L	M	L	L	L	L		
Excessive Heat	M	M	M	M	M	M	M	H	H	H
Wildfire										
Fog (Overnight)										
Rip Currents	M	M	L	M	M	L		L	L	L
Lake Okeechobee Elevation	12.09 ft. (1.67 ft. <u>Below</u> Normal)									
Keetch-Byram Drought Index	345 (+14) on a scale from 0 (very moist) to 800 (very dry)									





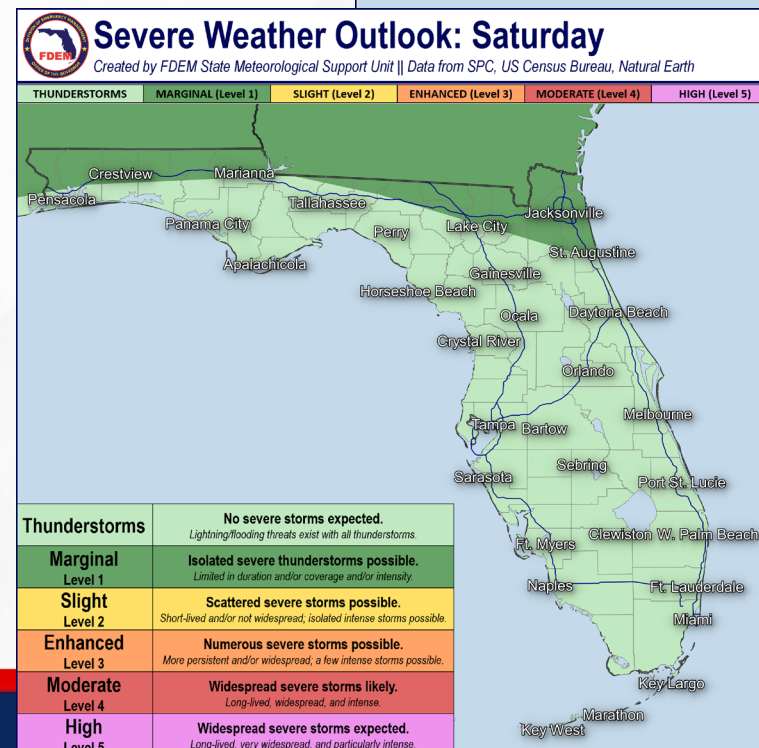
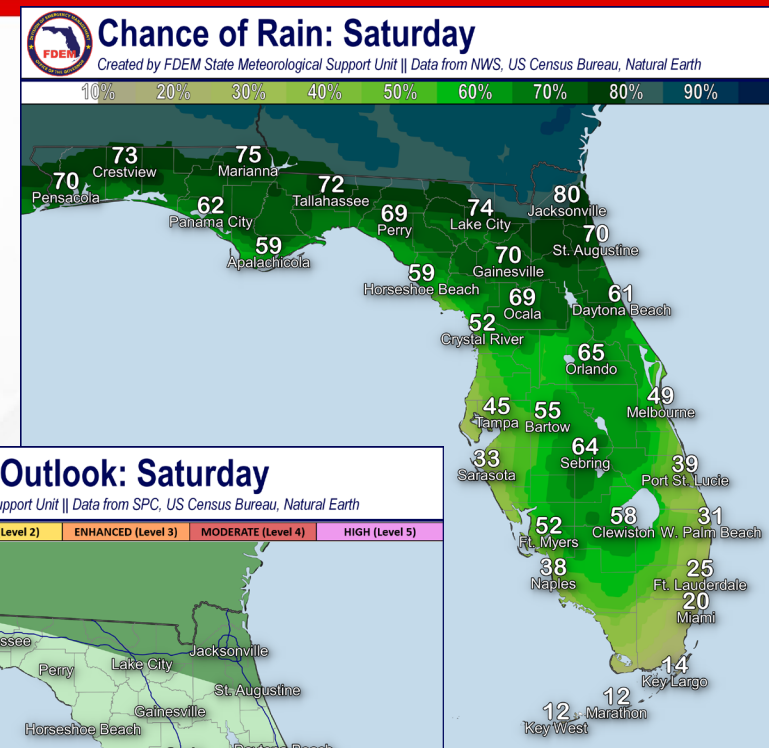
# Meteorology Summary

## Statewide Overview, Next 24 Hours:

The start to a wet and active next few days will begin today as a weak cold front across Georgia begins to sag south and eventually stall over North Florida. Showers and embedded thunderstorms are already ongoing this morning over the Big Bend and Nature Coast and will continue to push east throughout the day. Additional showers and thunderstorms are expected to initiate across the I-10 corridor and North Florida later this afternoon focused and enhanced by the weak cold front (65-90% chance of rain). Much of the I-10 corridor north has been outlooked with a **Marginal Risk (level 1 of 5) for Severe Weather** today. Some of these embedded thunderstorms may be capable of producing frequent lightning, gusty winds (50-60mph), and heavy downpours. A **Marginal (level 1 of 4) to Slight Risk (level 2 of 4) for Flash Flooding** has been outlooked across the same area where repeated rounds of heavy showers and thunderstorms are expected. Recent heavy rainfall and saturated soils may lead to an earlier onset of **ponding of water or nuisance flooding**, especially in urban and poor drainage locations. Across Central and South Florida, a more typical summertime thunderstorm pattern is expected with afternoon showers and thunderstorms initiating along the sea breeze boundaries, especially over interior portions of the Peninsula (40-60% chance of rain).

Increased cloud cover from showers and thunderstorms will mitigate some of the dangerous heat from recent days, however conditions will still remain hot. Temperatures will reach the lower to middle 90s across the state before any shower or thunderstorm activity occurs. **Heat index values** will reach the **lower to middle 100s** statewide and **Heat Advisories** have been issued across South Florida where heat index values may reach the **upper 100s** in some locations.

Showers and thunderstorms that develop in the afternoon and evening hours across South and Central Florida will generally wane with loss of daytime heating (15-30% chance of rain). However, the I-10 corridor may see activity continue into the overnight hours with closer proximity to the front (50-60% chance of rain). Low temperatures will remain mild in the middle to upper 70s statewide.



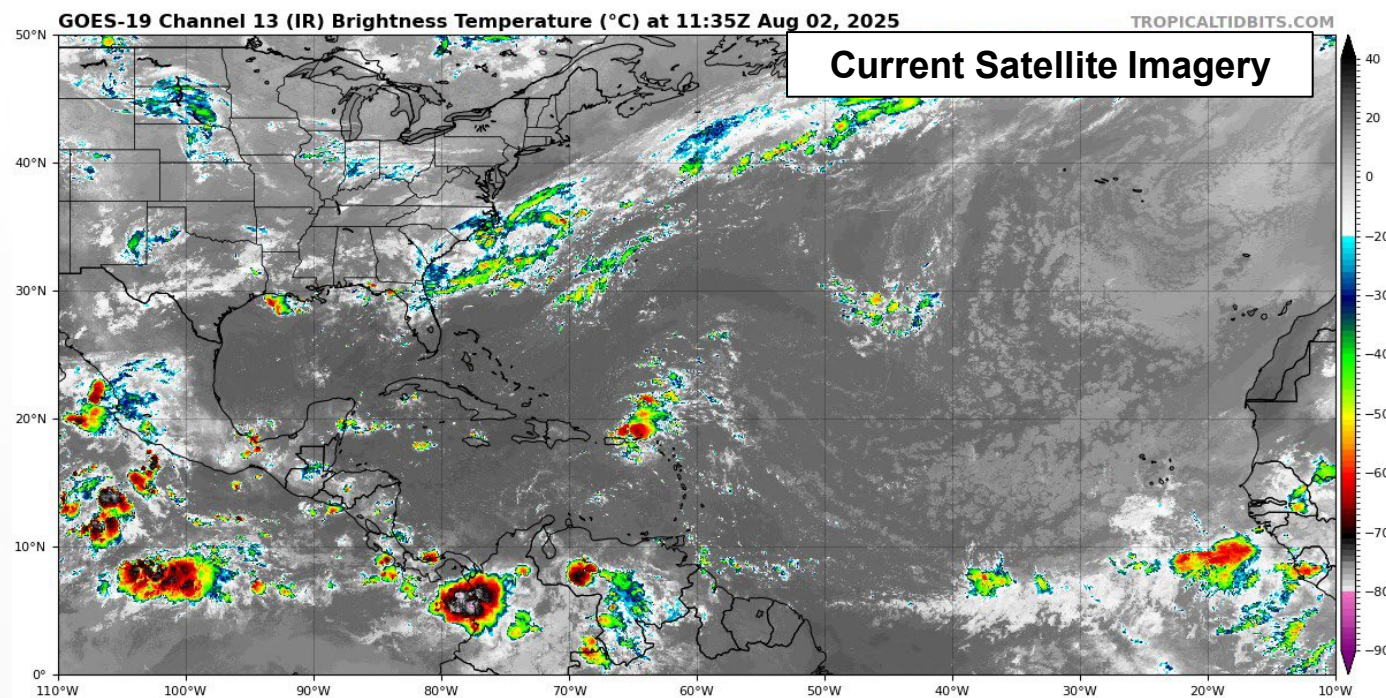
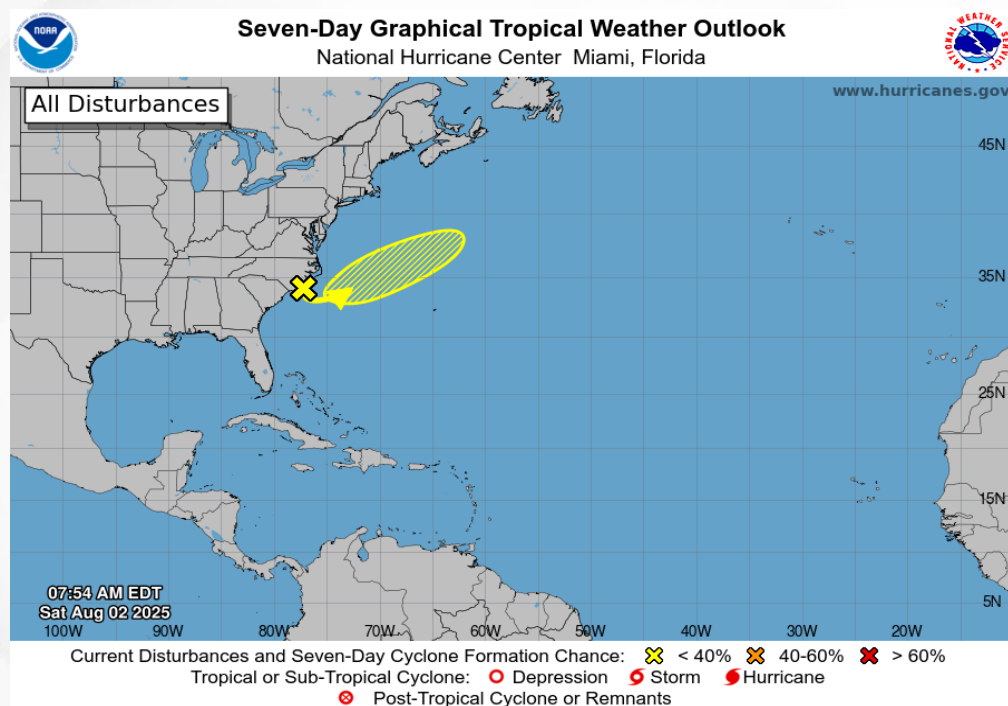




# Tropical Weather

For the latest on the tropics, please visit the National Hurricane Center (NHC) at [www.hurricanes.gov](http://www.hurricanes.gov).

Tropical development is **not anticipated** during the next 7 days over the Atlantic basin.







# Coastal Hazards & Hydrology

**Rip Currents:** There is a **moderate risk of rip currents** along most Florida Panhandle and Northeast Coast beaches today. For the latest Rip Current Outlook, visit [www.weather.gov/beach](http://www.weather.gov/beach).

**Marine Hazards:** Wave heights of 1-2' can be expected statewide.

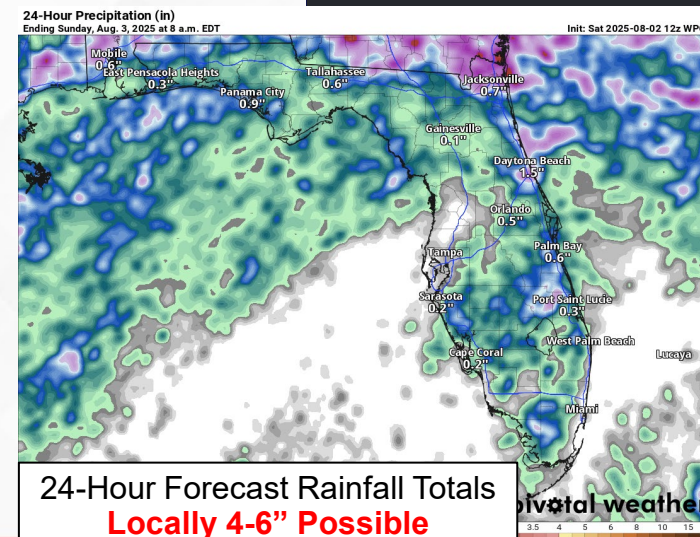
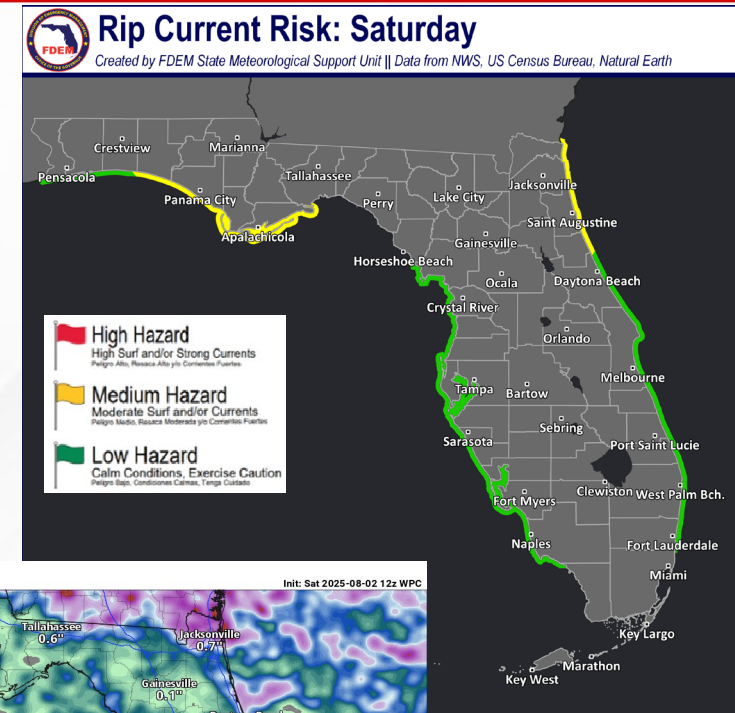
**Red Tide** was observed in two samples from Florida's Gulf Coast (Lee and Gulf County) over the past week (valid 7/25).

**Coastal Flooding:** There is no risk for coastal flooding today.

**Flash Flooding:** There is a **Marginal Risk (level 1 of 4) for Flash Flooding** outlooked for the far northern Panhandle today across the I-10 corridor where a cold front will allow for enhanced shower and thunderstorm activity. Repeated rounds of thunderstorms may lead to **localized ponding of water and flash flooding**, especially in urban and poor drainage locations. Nassau and northern Jackson County are under a **Slight Risk (level 2 of 4) for Flash Flooding** where the greatest chance for localized flash flooding is expected. Rainfall totals of 1-2" will be possible in any areas that experience showers or thunderstorms across the state, with **locally higher totals. Upwards of 4-6"** will be possible in localized areas across North Florida that experience slow-moving and prolonged thunderstorms.

**Riverine Flooding:** [Fisheating Creek at Palmdale](#) remains at Action Stage (bank-full) as water levels continue to decline slowly. There are no riverine concerns at this time, however conditions will be monitored across North and Central Florida where heavy rainfall this weekend may produce some localized riverine responses. For more information, visit the [River Forecast Center](#).

**Lake Okeechobee's** average elevation is 12.09 feet, which is within the operational band and is 1.67 feet below normal for this time of year.



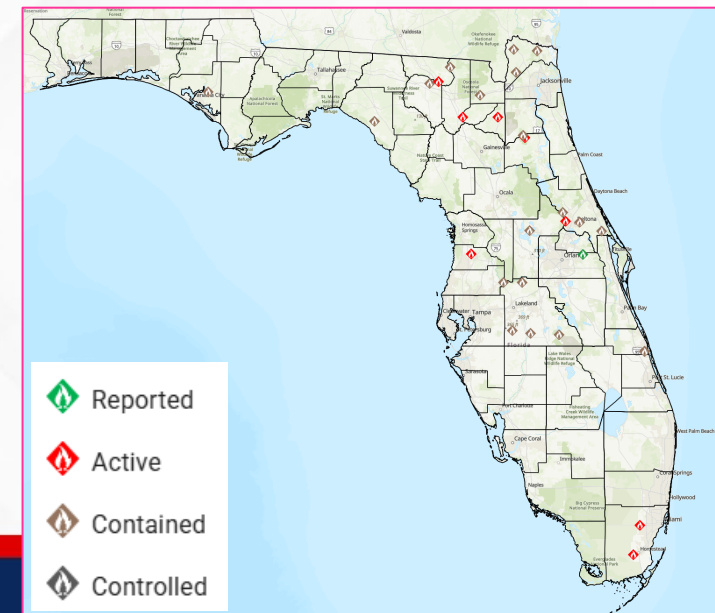
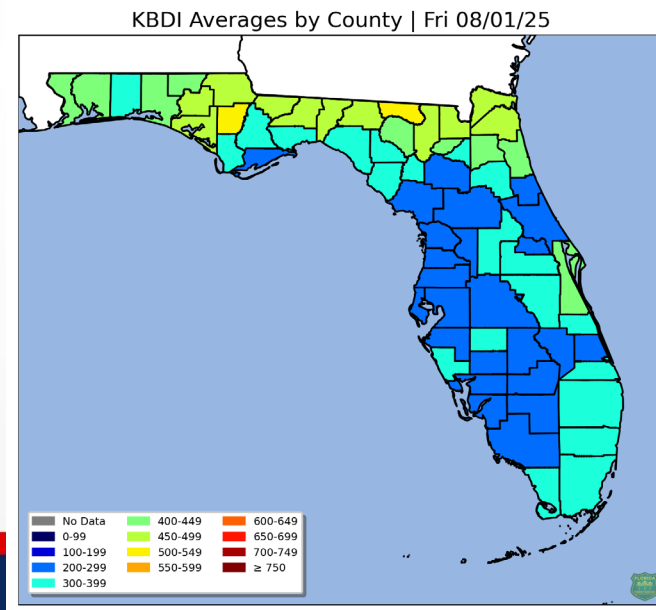
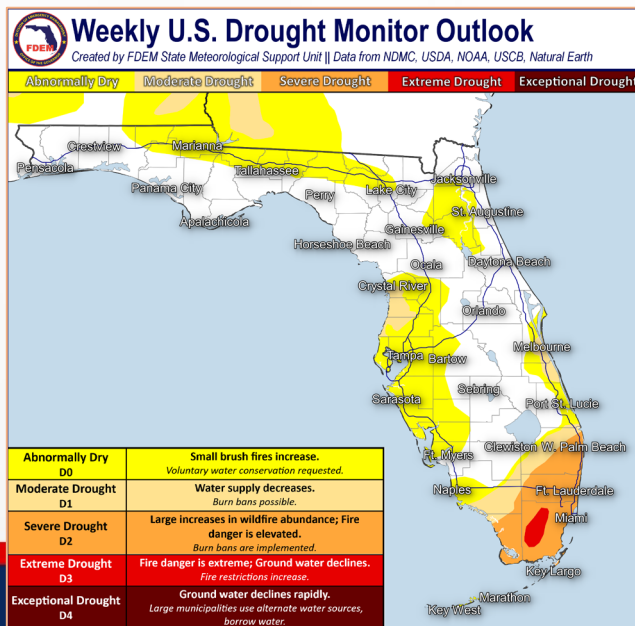


# Drought & Fire Weather

**Fire Weather:** Numerous to widespread showers and thunderstorms are expected across the state today as ample tropical moisture remains entrenched over the state. Conditions will remain hot allowing for any soils or vegetation that don't receive beneficial rainfall to dry out. However, relative humidities will remain above critical thresholds statewide keeping the overall wildfire threat low (RH values 55-75%). Any thunderstorms that do develop will be capable of producing frequent lightning and erratic winds. According to the [Florida Forest Service](#), there are 34 active wildfires across the state burning approximately 2,841 acres.

**Drought:** No changes were made during this week's drought monitor outlook as much of the regions under drought remain below average in rainfall and haven't received significant rainfall in the past week. A **Severe drought (level 2 of 4)** persists across Southeast Florida where monthly rainfall deficits remain 2-4" for many locations and an **Extreme drought (level 3 of 4)** persists over western Miami-Dade County. Portions of the Nature Coast remain in **Moderate Drought (level 1 of 4)** where monthly rainfall totals are likewise at a 2-4" deficit. Portions of the northern Panhandle are under an abnormally dry (emerging drought) category where hit-or-miss thunderstorms have benefited some locations, but not all. Rainfall chances will generally increase across the state this weekend and into next week as a front stalls across North Florida which may alleviate some drought conditions.

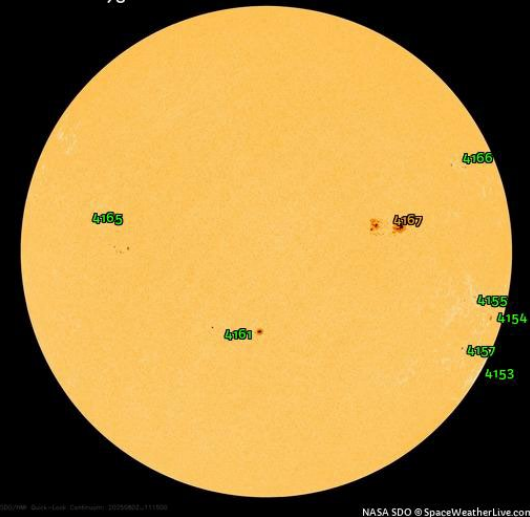
The **Keetch-Byram Drought Index** average for Florida is **345 (+14)** on a scale from 0 (very wet) to 800 (very dry). There are **2** Florida counties (Calhoun and Hamilton) that have an average KBDI above 500 (drought/increased fire danger).





# Space Weather

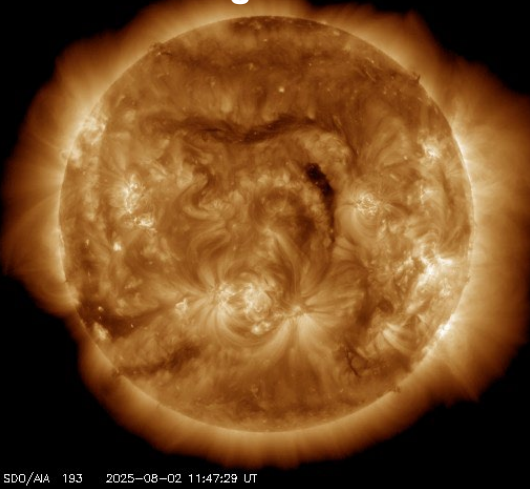
HMI Intensitygram



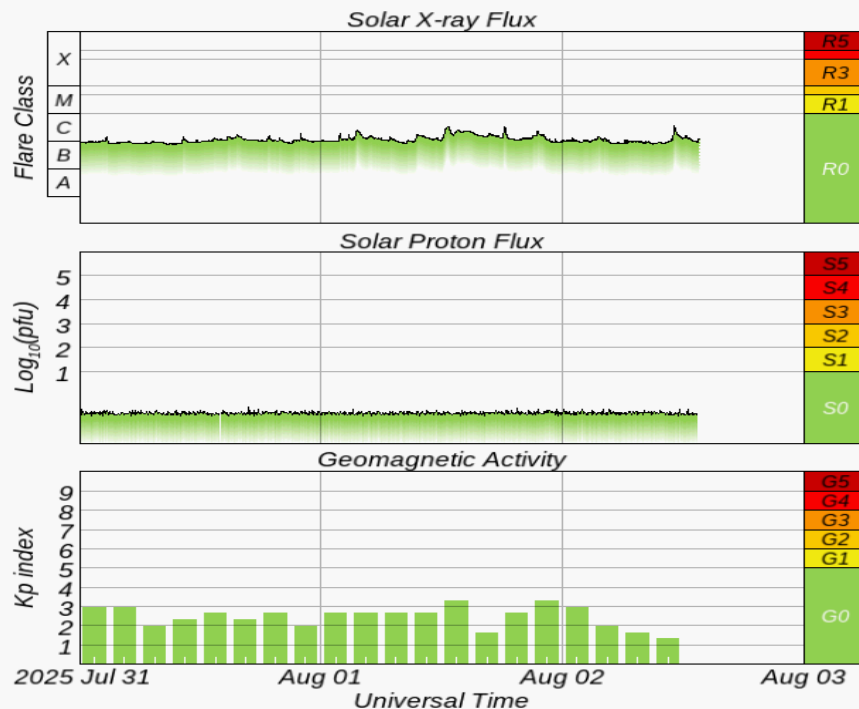
NASA SDO @ SpaceWeatherLive.com

## Current Sunspots

## Earth-facing Coronal Holes



SDO/AIA 193 2025-08-02 11:47:29 UT



Solar Flare Risk	Active Watches & Warnings	Past 24 hours
M-class: 30%	Geomagnetic Storm: None	C3 Solar Flare
X-class: 5%	Radiation Storm: None	No Radio Blackouts

48-Hour Geomagnetic Forecast	
8/2	8/3
Max Kp= 3 (G0)	Max Kp= 2 (G0)
Chance of minor activity = 5% severe activity = 1%	Chance of minor activity = 1% severe activity = 1%

**Space Weather:** Solar activity will remain low today with a chance for a strong solar flare (M-class). Minor to moderate (R1-R2) radio blackouts may accompany any M-class solar flares that develop. Solar winds will continue to wane today as coronal hole influences towards the Earth begin to diminish through the weekend. However, elevated solar winds cannot be ruled out with any isolated effects from a CME earlier this week. Quiet to unsettled geomagnetic activity will prevail into the weekend with only a slight chance for an isolated G1 (Minor) geomagnetic storm. The overall space threat to Florida is very low.





# SWO Communications Systems & Contact Information

Equipment	Contact	Status	Comments
Phone:	800-320-0519, 850-815-4001, 850-591-0071 (Backup Cell)	Operational	
Backup Landline:	850-487-3234, 850-487-3228	Operational	
Fax:	850-815-4979	Operational	
Email:	<a href="mailto:SWP@em.myflorida.com">SWP@em.myflorida.com</a>	Operational	
SWO Tracker:	<a href="https://apps.floridadisaster.org/SWO/">https://apps.floridadisaster.org/SWO/</a>	Operational	
SLERS:	DEM Statewide	Operational	
FNARS:	WGY974	Operational	
Federal NAWAS:	State Watch Office	Operational	
EMnet Message:	FL.000- State Watch Office	Operational	
EMnet Voice:	FL SWP- State Watch Office	Operational	
IPAWS:	LP.1 Stations via Emnet	Operational	
FIN:	SOFEOC	Operational	
Satellite Phones:	MSAT 888-890-5178 or Iridium 480-263-8838	Operational	
Website:	<a href="http://www.floridadisaster.org">http://www.floridadisaster.org</a>	Operational	

Users wishing to subscribe (approval pending) to this distribution list, register at:

[https://public.govdelivery.com/accounts/FLDEM/subscriber/new?topic\\_id=Morning\\_SITREP](https://public.govdelivery.com/accounts/FLDEM/subscriber/new?topic_id=Morning_SITREP)