



# **Florida Division of Emergency Management State Watch Office**

## **Morning Situation Report**

Friday, July 25, 2025



# State Emergency Operations Center Activation Level

Level 2 Activation



# SERT On-Call Personnel

Position	Personnel	Phone	Email
Operations Chief	Amy Godsey	(850) 519-8483	<a href="mailto:Amy.Godsey@em.myflorida.com">Amy.Godsey@em.myflorida.com</a>
Watch Officer	Woody Harvey	(850) 591-7939	<a href="mailto:Woodham.Harvey@em.myflorida.com">Woodham.Harvey@em.myflorida.com</a>
Duty Officer	Jay Griffin	(850) 524-4094	<a href="mailto:Kellen.Griffin-Jay@em.myflorida.com">Kellen.Griffin-Jay@em.myflorida.com</a>
Operations Officer- Day	Lauren Warfield	(850) 815-4001	<a href="mailto:SWP@em.myflorida.com">SWP@em.myflorida.com</a>
Operations Officer- Swing	Zachary Remante	(850) 815-4001	<a href="mailto:SWP@em.myflorida.com">SWP@em.myflorida.com</a>
Operations Officer- Night	Jim Lawhon	(850) 815-4001	<a href="mailto:SWP@em.myflorida.com">SWP@em.myflorida.com</a>
Meteorologist	Kennedy Tartt	(850) 567-6368	<a href="mailto:Kennedy.Tartt@em.myflorida.com">Kennedy.Tartt@em.myflorida.com</a>
Plans Chief	Kaylynn Perry	(850) 254-5657	<a href="mailto:Plans_Command@em.myflorida.com">Plans_Command@em.myflorida.com</a>
Logistics Chief	Christina Goetzman	(850) 519-8581	<a href="mailto:Christina.Goetzman@em.myflorida.com">Christina.Goetzman@em.myflorida.com</a>
Human Services Director	Pam Hughes	(850) 528-5638	<a href="mailto:Pamela.Hughes@em.myflorida.com">Pamela.Hughes@em.myflorida.com</a>
Emergency Services	Tim Kenyon	(850) 591-7732	<a href="mailto:Tim.Kenyon@em.myflorida.com">Tim.Kenyon@em.myflorida.com</a>
Infrastructure Branch Director	Christina Goetzman	(850) 519-8581	<a href="mailto:Christina.Goetzman@em.myflorida.com">Christina.Goetzman@em.myflorida.com</a>
ESF 8 On-Call	Hunter Stafford	(866) 786-4673	<a href="mailto:DLDOHDutyOfficers@flhealth.gov">DLDOHDutyOfficers@flhealth.gov</a>
Public Information Officer	Stephanie Hartman	(850) 570-3053	<a href="mailto:Stephanie.Hartman@em.myflorida.com">Stephanie.Hartman@em.myflorida.com</a>
DEM Finance and Admin	Jeremy Smith	(850) 273-1273	<a href="mailto:Jeremy.Smith@em.myflorida.com">Jeremy.Smith@em.myflorida.com</a>



# Response Regional Coordination Team

Team	County Location	Visits
Region 1: Jim Roberts	Gadsden	Office Admin / Equipment Check
Region 2: Enrique Gaston	Franklin	T&E Call / EM Visit
Region 3: Glen Hammers	Out of Service	Leave (See Coverage)
Region 4: Tara Kostich	Clay	L-449 Prep / DOH Meeting
Region 5: Austin Beeghly	Seminole	Office Admin
Region 6: Paul Siddall	In Region	On-Call Status
Region 7: Kathryn Hollenbeck	Polk	Vehicle Maintenance
Region 8: Mason Kozac	Out of Service	Leave (See Coverage)
Region 9: Vacant	N/A	N/A
Region 10: Claudia Baker	Out of Service	Leave (See Coverage)



Region 3 Coverage Provided by Response Coordinator 4  
Region 8 Coverage Provided by Recovery Coordinator 8  
Region 9 Coverage Provided by Recovery Coordinator 9  
Region 10 Coverage Provided by Recovery Coordinator 8

Status
Normal Operations
Out of Service / Unavailable



# Recovery Regional Coordination Team

Team	County Location	Status / Activities
Region 1: Allison Blevins	Walton	External Stakeholders Mtg / Admin Duties
Region 2: Justin Lazzara	Leon	External Stakeholders Mtg / Admin Duties
Region 3: Vacant	N/A	See Coverage
Region 4: Joshua Saunders	Leave	See Coverage
Region 5: Elizabeth Caison	In State	FEPA Mid-Year / Return Travel to Region
Vacant	N/A	See Coverage
Region 6: Vacant		
Region 7: Antonio Zapata	Polk	Vehicle Maintenance
Region 8: Ja-Pheth Butler-Miller	Volusia	County EM Meeting
Region 9: Jacob Ginsberg	Sarasota	On-Call Status
Region 10: Vacant	N/A	See Coverage

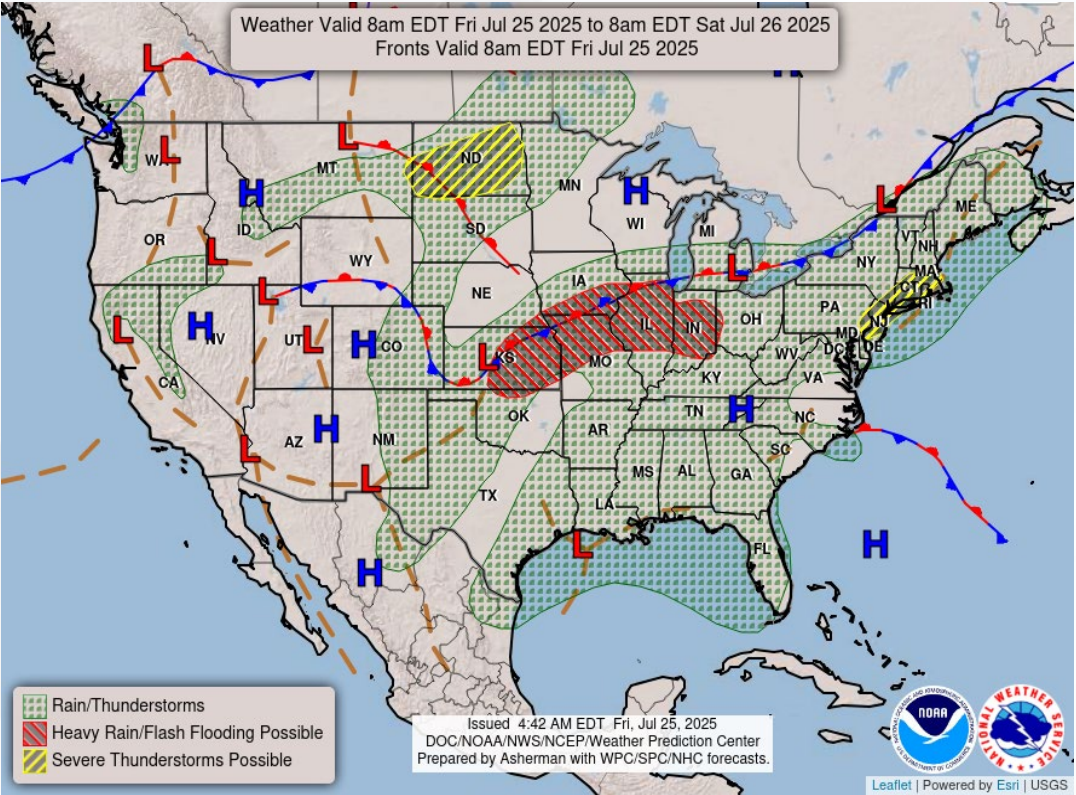
Region 3 Coverage Provided by Recovery Coordinator 2 & 4  
Region 4 Coverage Provided by Recovery Coordinator 2  
Region 6 Coverage Provided by Recovery Coordinator 5  
Region 10 Coverage Provided by Recovery Coordinator 8

Status
Normal Operations
In Region / Delayed Response
Deployed / Delayed Response
Out of Service / Unavailable



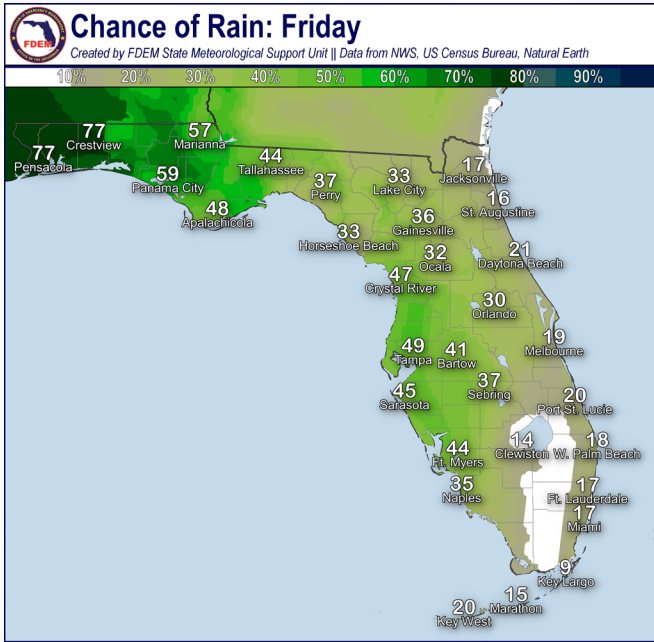
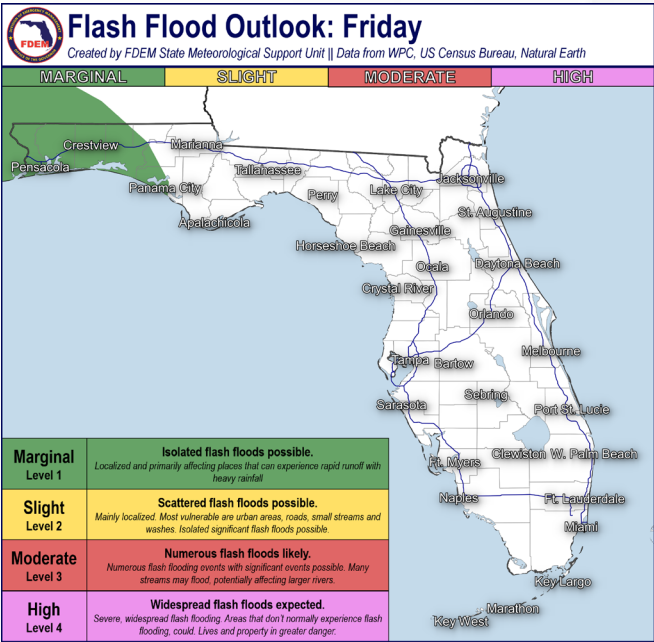


# Meteorology Summary



Today's Weather Map

T threat	R1	R2	R3	R4	R5	R6	R7	R8	R9	R10
Lightning	H	M	M	L	M	M	M	L	M	L
Tornado										
Damaging Wind	L	L	L			L	L		L	
Hail										
Flash Flooding	L	L								
Excessive Heat	M	M	M	M	M	M	M	M	M	M
Wildfire										
Fog (Overnight)										
Rip Currents	H	H	L	M	M	L		M	L	H
Lake Okeechobee Elevation	12.01 ft. (1.68 ft. <u>Below</u> Normal)									
Keetch-Byram Drought Index	238 (-31) on a scale from 0 (very moist) to 800 (very dry)									





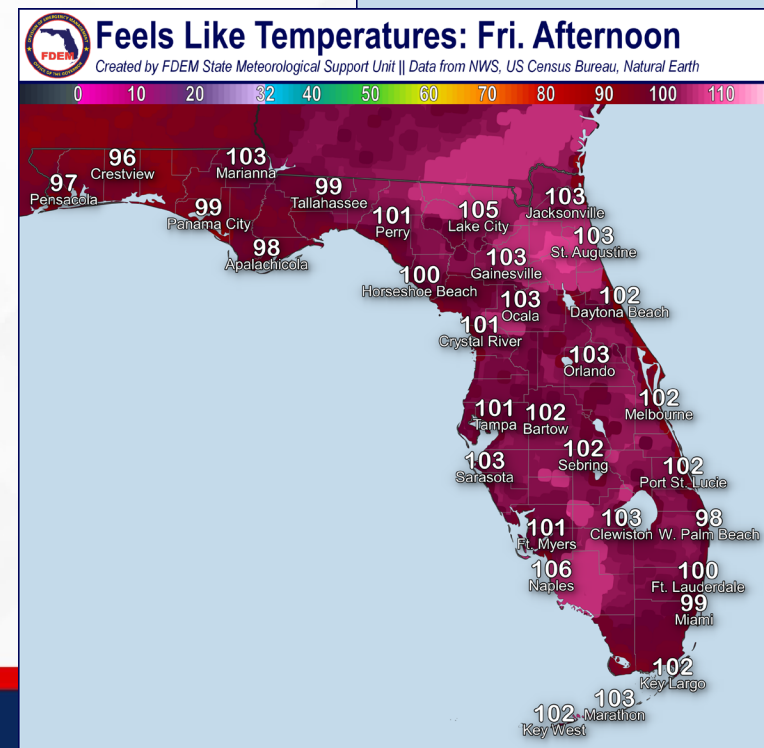
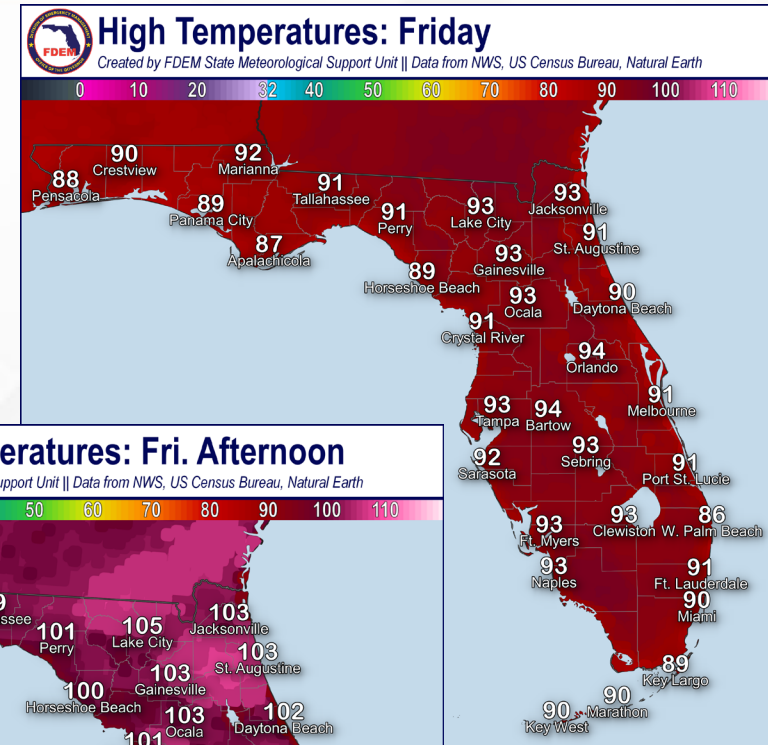
# Meteorology Summary

## Statewide Overview, Next 24 Hours:

Lingering tropical moisture will stick around over most of the state today as southerly flow remains for one more day. However, rain chances will generally diminish compared to recent days for most locations, especially eastern Florida where drier air will begin to filter in throughout the day (15-30% chance of rain) as a high-pressure system begins to move over the state. This will allow for an isolated sea breeze shower or thunderstorm throughout the day. Over West Florida and the Panhandle, greater rain chances remain (55-80% chance of rain). A **Marginal Risk (level 1 of 4) for Flash Flooding** is outlooked across the western Panhandle, mainly west of SR 331, where prolonged and repeated rounds of thunderstorms may lead to instances of **flash flooding and ponding of water**. Any of these thunderstorms could be **locally strong** capable of producing gusty winds, heavy downpours, and frequent lightning. Due to the more persistent southerly flow, there is a **high risk of dangerous rip currents** for western Panhandle beaches.

**Hot and humid conditions** will begin to build across the state into the weekend as high temperatures reach the upper 80s to middle 90s. Less cloud coverage over the Florida Peninsula will allow **heat index values** to reach into the **triple digits (100-107-degrees)**. Greater cloud coverage and rainfall will limit the overall magnitude of heat over the western Panhandle, though **heat index values** will still reach the **middle to upper 90s**.

Showers and thunderstorms will taper off this evening and overnight as drier air filters in across the state. An isolated shower or thunderstorm will be possible over the western Panhandle where some residual moisture remains (15-30% chance of rain). Low temperatures will fall into the middle to upper 70s and lower 80s across the state.







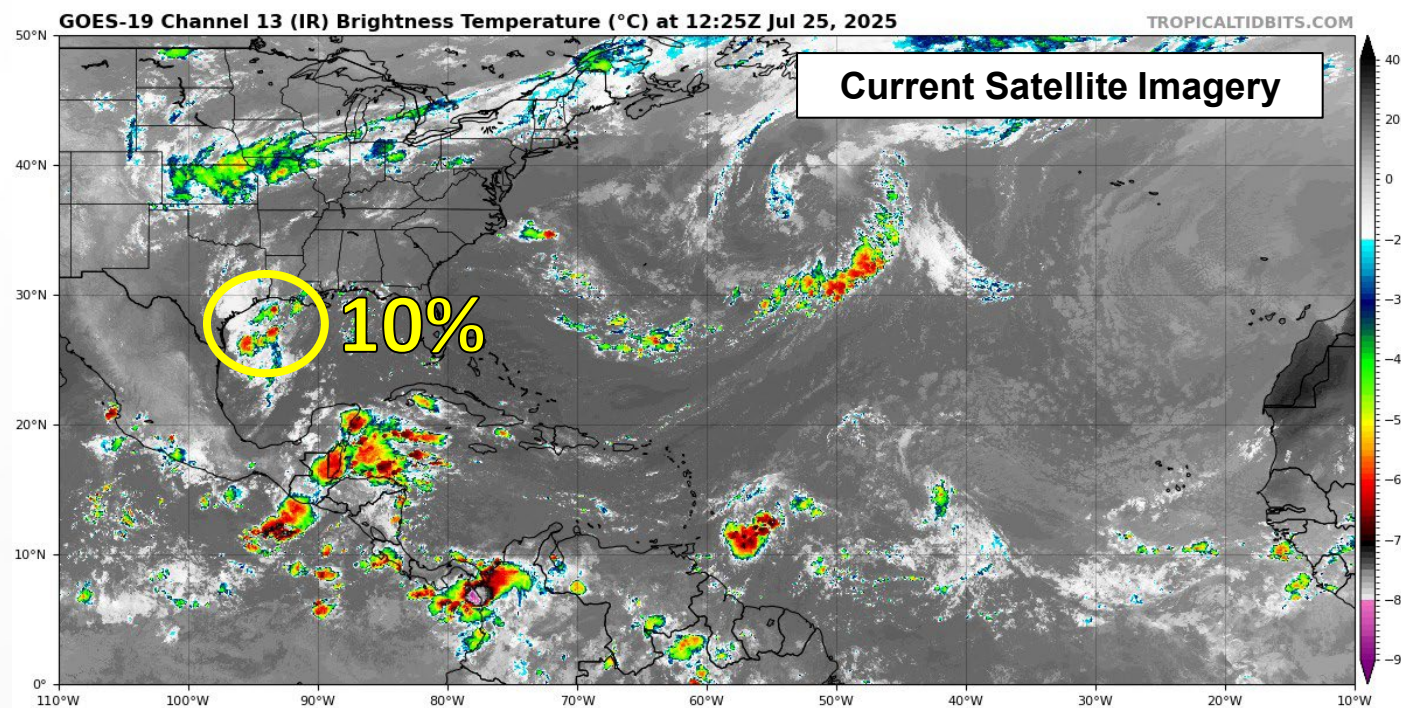
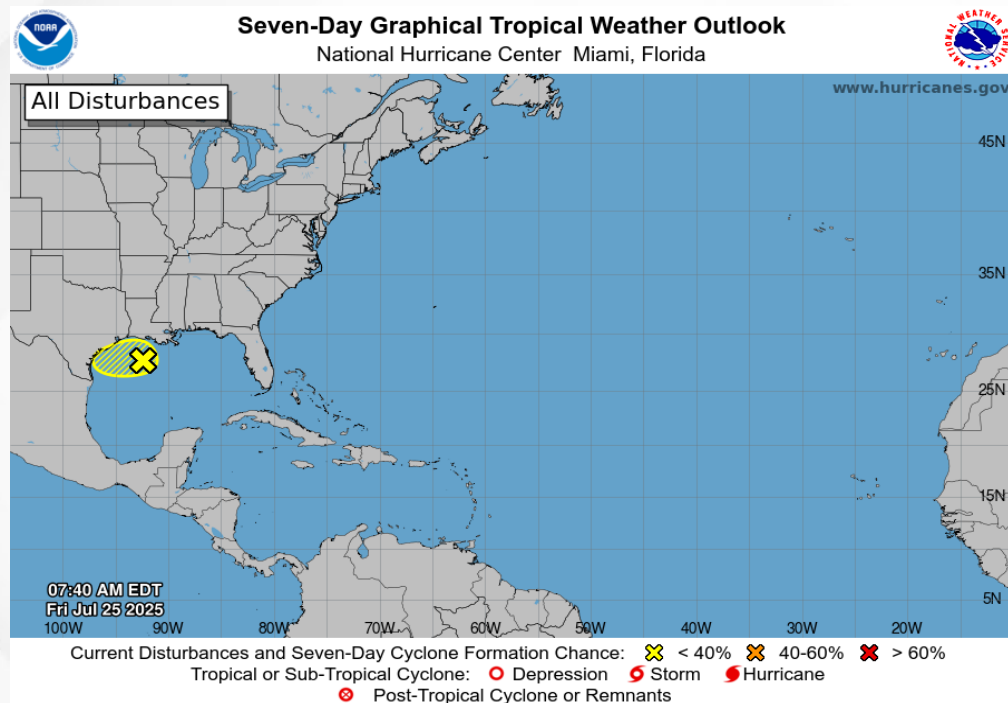
# Tropical Weather

For the latest on the tropics, please visit the National Hurricane Center (NHC) at [www.hurricanes.gov](http://www.hurricanes.gov).

**Northwestern Gulf:** A weak low-pressure system located 100 miles south of the Louisiana coast continues to produce disorganized showers and thunderstorms. This system will move west towards the Texas coast today and has limited time to develop before it moves over land tonight. *Regardless of formation, locally heavy rainfall is likely over portions of the northwestern Gulf coast during the next couple of days.*

\*Formation chance through 48 hours...**low...10%.**

\*Formation chance through 7 days...**low...10%.**







# Coastal Hazards & Hydrology

**Rip Currents:** There is a **high risk of rip currents** along Emerald Coast and Gold Coast beaches today and a **moderate risk of rip currents** along most other East Coast and Panhandle beaches. For the latest Rip Current Outlook, visit [www.weather.gov/beach](http://www.weather.gov/beach).

**Marine Hazards:** Wave heights of 1-2' can be expected statewide with wave heights of 2-3' for most Panhandle beaches.

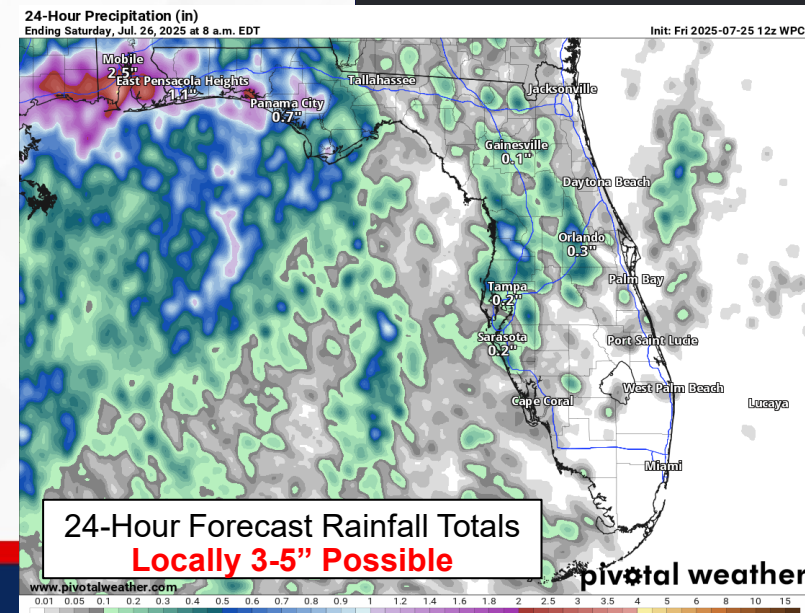
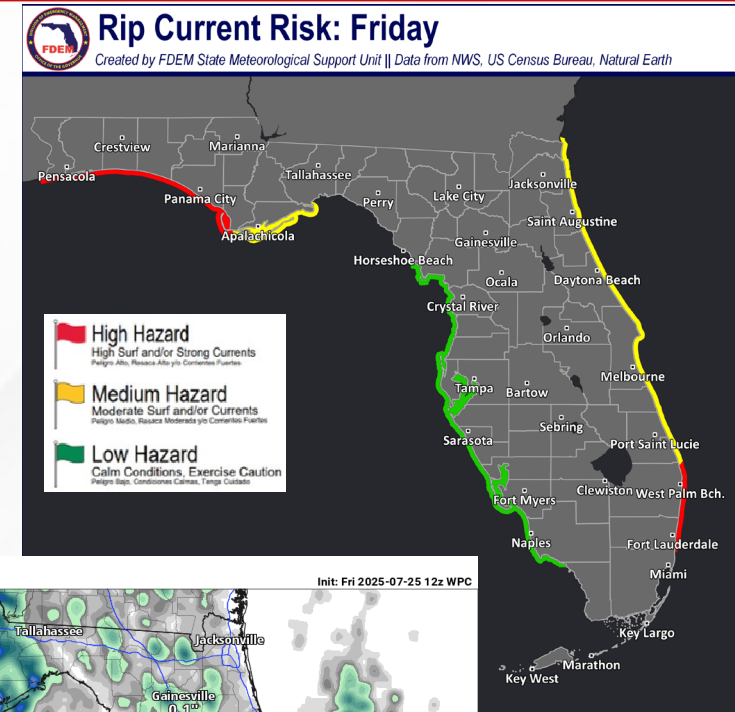
**Red Tide** has been not been observed along any Florida coastline over the past week (valid 7/18).

**Coastal Flooding:** There is no risk for coastal flooding today.

**Flash Flooding:** There is a **Marginal Risk (level 1 of 4) for Flash Flooding** outlooked across the western Florida Panhandle mainly west of SR 331 where repeated rounds of heavy showers and thunderstorms are most likely. **Locally heavy downpours** could produce quick rainfall totals of 1-2", with isolated amounts of 3-5" possible, which may lead to areas of **ponding of water or flash flooding**. Otherwise, there is no organized risk for flash flooding across the rest of the state. However, instances of ponding of water is possible in any areas that receive prolonged or repeated rounds of isolated thunderstorms.

**Riverine Flooding:** The [Ocklawaha River at Rodman Dam](#) remains at **Minor Flood Stage** this morning while the [Fisheating Creek at Palmdale](#) remains at **Action Stage (bank-full)** as well as the upstream gauge [near Lakeport at Highway 78](#). The [Sante Fe River at Worthington Springs](#) is forecast to crest into Action Stage this weekend. Although additional riverine responses are not expected, conditions will be heavily dependent upon where any prolonged thunderstorm activity occurs across each basin. Areas that receive repeated rounds of heavy thunderstorms today may experience riverine responses. Additional updates to these forecasts will be likely through the week. For more information, visit the [River Forecast Center](#).

**Lake Okeechobee's** average elevation is 12.01 feet, which is within the operational band and is 1.68 feet below normal for this time of year.



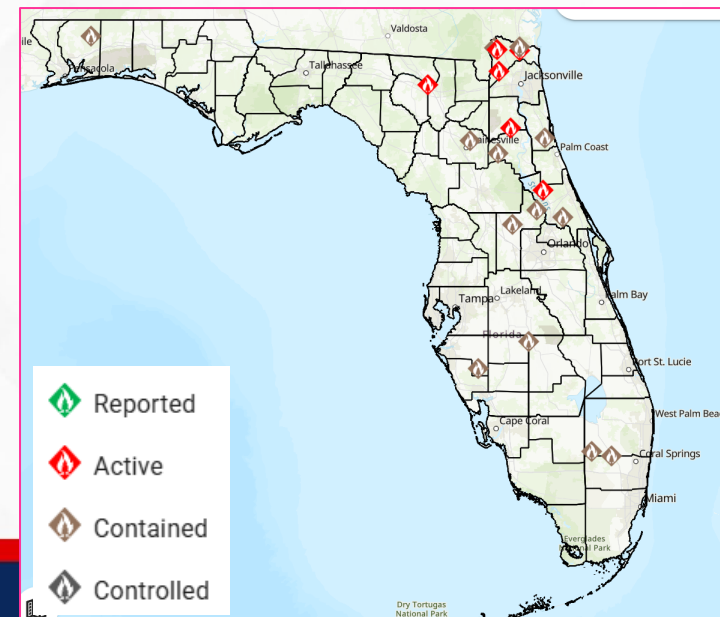
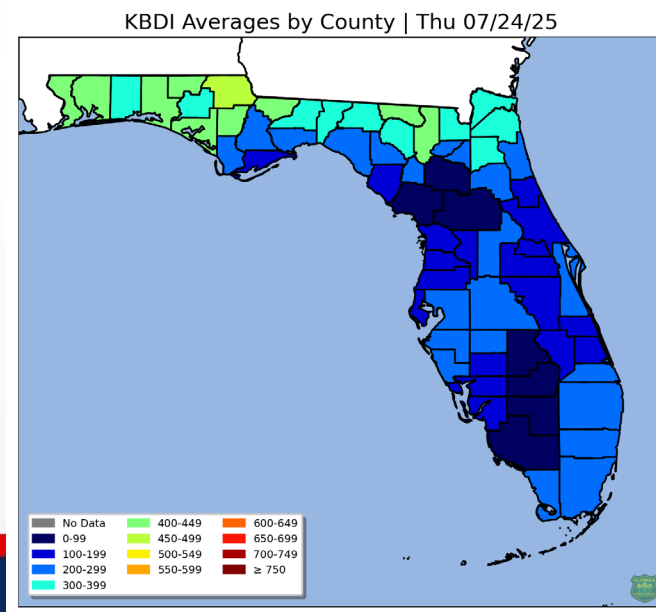
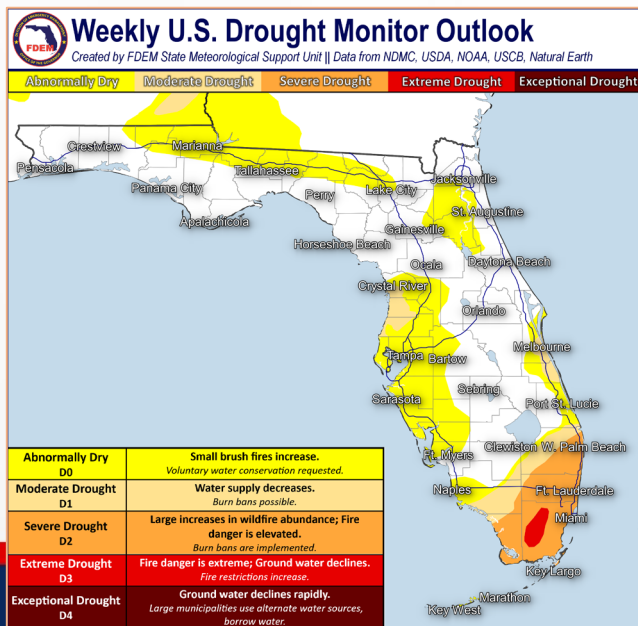


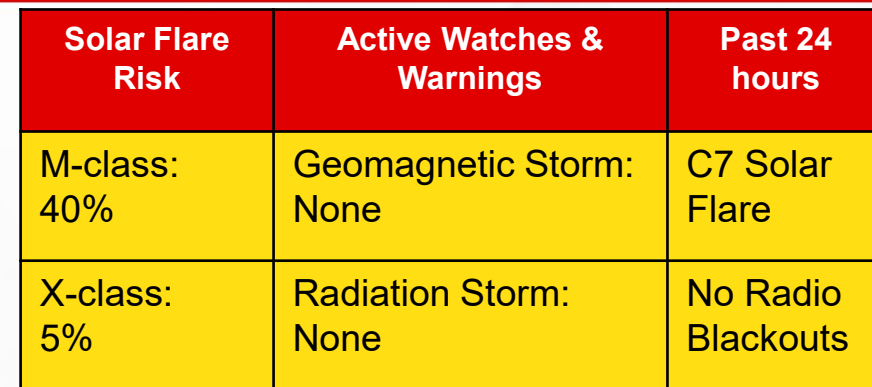
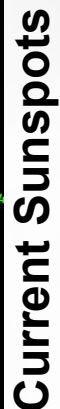
# Drought & Fire Weather

**Fire Weather:** Tropical moisture will still linger across the state today in the wake of the upper-level disturbance that passed through the state on Wednesday. Scattered to widespread showers and thunderstorms are expected across the western Panhandle and West Coast this afternoon and evening with more isolated chances over the eastern Florida Peninsula. Relative humidities will remain well above critical thresholds statewide (55-75% RH values) due to the tropical airmass, and improving soil/vegetation saturation will keep the overall wildfire threat low. However, any thunderstorms that do develop will be capable of producing very frequent lightning and gusty/erratic winds which may lead to new ignitions or localized spread of existing brush fires. According to the [Florida Forest Service](#), there are 17 active wildfires across the state burning approximately 277 acres.

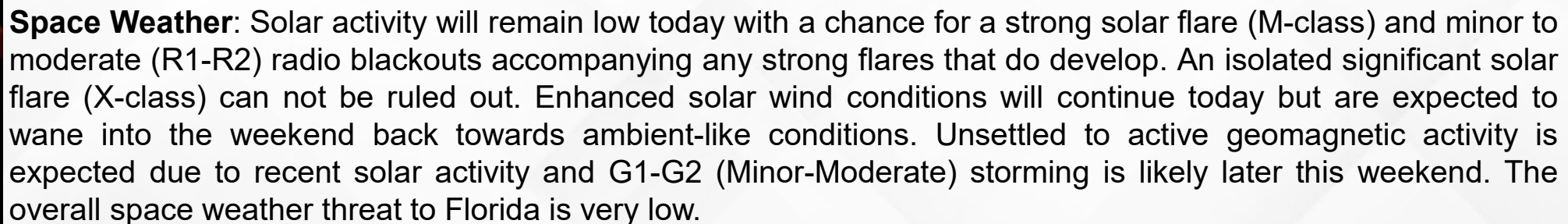
**Drought:** Significant improvements were made over Marion County with the recent active weather pattern that brought plentiful rainfall the past two weeks of 8-14" of rain. A **Moderate drought (level 1 of 4)** was completely removed within this region near the Ocala National Forest. Otherwise, no changes statewide for the drought outlook. A **Severe drought (level 2 of 4)** persists across Southeast Florida where monthly rainfall deficits remain 2-4" for many locations and an **Extreme drought (level 3 of 4)** persists over western Miami-Dade County. Portions of the Nature Coast remain in **Moderate Drought (level 1 of 4)** where monthly rainfall totals similarly remain below average the past month. Although not in an official drought category yet, portions of the northern Panhandle may see an upgrade to Moderate Drought if dry conditions persist through the next week.

The **Keetch-Byram Drought Index** average for Florida is **238 (-31)** on a scale from 0 (very wet) to 800 (very dry). Zero Florida counties have an average KBDI above 500 (drought/increased fire danger).





7/25	7/26
Max Kp= 3 (G0)	Max Kp= 2 (G0)
Chance of minor activity = 5% severe activity = 1%	Chance of minor activity = 1% severe activity = 1%







# SWO Communications Systems & Contact Information

Equipment	Contact	Status	Comments
Phone:	800-320-0519, 850-815-4001, 850-591-0071 (Backup Cell)	Operational	
Backup Landline:	850-487-3234, 850-487-3228	Operational	
Fax:	850-815-4979	Operational	
Email:	<a href="mailto:SWP@em.myflorida.com">SWP@em.myflorida.com</a>	Operational	
SWO Tracker:	<a href="https://apps.floridadisaster.org/SWO/">https://apps.floridadisaster.org/SWO/</a>	Operational	
SLERS:	DEM Statewide	Operational	
FNARS:	WGY974	Operational	
Federal NAWAS:	State Watch Office	Operational	
EMnet Message:	FL.000- State Watch Office	Operational	
EMnet Voice:	FL SWP- State Watch Office	Operational	
IPAWS:	LP.1 Stations via Emnet	Operational	
FIN:	SOFEOC	Operational	
Satellite Phones:	MSAT 888-890-5178 or Iridium 480-263-8838	Operational	
Website:	<a href="http://www.floridadisaster.org">http://www.floridadisaster.org</a>	Operational	

Users wishing to subscribe (approval pending) to this distribution list, register at:

[https://public.govdelivery.com/accounts/FLDEM/subscriber/new?topic\\_id=Morning\\_SITREP](https://public.govdelivery.com/accounts/FLDEM/subscriber/new?topic_id=Morning_SITREP)