



# **Florida Division of Emergency Management State Watch Office**

## **Morning Situation Report**

Thursday, July 24, 2025



# State Emergency Operations Center Activation Level

Level 2 Activation



# SERT On-Call Personnel

| Position                       | Personnel          | Phone          | Email  |
|--------------------------------|--------------------|----------------|--|
| Operations Chief               | Amy Godsey         | (850) 519-8483 | <a href="mailto:Amy.Godsey@em.myflorida.com">Amy.Godsey@em.myflorida.com</a>                 |
| Watch Officer                  | Woody Harvey       | (850) 591-7939 | <a href="mailto:Woodham.Harvey@em.myflorida.com">Woodham.Harvey@em.myflorida.com</a>         |
| Duty Officer                   | Jay Griffin        | (850) 524-4094 | <a href="mailto:Kellen.Griffin-Jay@em.myflorida.com">Kellen.Griffin-Jay@em.myflorida.com</a> |
| Operations Officer- Day        | Lauren Warfield    | (850) 815-4001 | <a href="mailto:SWP@em.myflorida.com">SWP@em.myflorida.com</a>                               |
| Operations Officer- Swing      | Zachary Remante    | (850) 815-4001 | <a href="mailto:SWP@em.myflorida.com">SWP@em.myflorida.com</a>                               |
| Operations Officer- Night      | Jim Lawhon         | (850) 815-4001 | <a href="mailto:SWP@em.myflorida.com">SWP@em.myflorida.com</a>                               |
| Meteorologist                  | Kennedy Tartt      | (850) 567-6368 | <a href="mailto:Kennedy.Tartt@em.myflorida.com">Kennedy.Tartt@em.myflorida.com</a>           |
| Plans Chief                    | Kaylynn Perry      | (850) 254-5657 | <a href="mailto:Plans_Command@em.myflorida.com">Plans_Command@em.myflorida.com</a>           |
| Logistics Chief                | Christina Goetzman | (850) 519-8581 | <a href="mailto:Christina.Goetzman@em.myflorida.com">Christina.Goetzman@em.myflorida.com</a> |
| Human Services Director        | Pam Hughes         | (850) 528-5638 | <a href="mailto:Pamela.Hughes@em.myflorida.com">Pamela.Hughes@em.myflorida.com</a>           |
| Emergency Services             | Tim Kenyon         | (850) 591-7732 | <a href="mailto:Tim.Kenyon@em.myflorida.com">Tim.Kenyon@em.myflorida.com</a>                 |
| Infrastructure Branch Director | Christina Goetzman | (850) 519-8581 | <a href="mailto:Christina.Goetzman@em.myflorida.com">Christina.Goetzman@em.myflorida.com</a> |
| ESF 8 On-Call                  | Hunter Stafford    | (866) 786-4673 | <a href="mailto:DLDOHDDutyOfficers@flhealth.gov">DLDOHDDutyOfficers@flhealth.gov</a>         |
| Public Information Officer     | Stephanie Hartman  | (850) 570-3053 | <a href="mailto:Stephanie.Hartman@em.myflorida.com">Stephanie.Hartman@em.myflorida.com</a>   |
| DEM Finance and Admin          | Jeremy Smith       | (850) 273-1273 | <a href="mailto:Jeremy.Smith@em.myflorida.com">Jeremy.Smith@em.myflorida.com</a>             |



# Response Regional Coordination Team

| Team                         | County Location  | Visits  |
|------------------------------|------------------|---|
| Region 1: Jim Roberts        | Santa Rosa       | Statewide Exercise AAR / County All Hazards Meeting / Woodruff Dam TTX    |
| Region 2: Enrique Gaston     | Leon             | Statewide Exercise AAR / Woodruff Dam TTX                                 |
| Region 3: Glen Hammers       | Out of Service   | Leave (See Coverage)  |
| Region 4: Tara Kostich       | Duval            | Statewide Exercise AAR / First Coast Disaster Council Meeting             |
| Region 5: Austin Beeghly     | Volusia, Osceola | Hurricane Exercise / EM Meeting   |
| Region 6: Paul Siddall       | Pinellas         | Hospital Mitigation Meeting / Response Coordinators Meeting               |
| Region 7: Kathryn Hollenbeck | Polk, Pinellas   | Statewide Exercise AAR / Hospital Meeting / Response Coordinators Meeting |
| Region 8: Mason Kozac        | Lee, St Lucie    | Return to R8 Travel   |
| Region 9: Vacant             | N/A              | N/A   |
| Region 10: Claudia Baker     | Out of Service   | Leave (See Coverage)  |



Region 3 Coverage Provided by Response Coordinator 4  
Region 8 Coverage Provided by Recovery Coordinator 8  
Region 9 Coverage Provided by Recovery Coordinator 9  
Region 10 Coverage Provided by Recovery Coordinator 8

| Status                       |
|------------------------------|
| Normal Operations            |
| Out of Service / Unavailable |



# Recovery Regional Coordination Team

| Team                             | County Location | Status / Activities      |
|----------------------------------|-----------------|--------------------------|
| Region 1: Allison Blevins        | Santa Rosa      | County Partners Meeting  |
| Region 2: Justin Lazzara         | Jefferson       | County EM Meeting        |
| Region 3: Vacant                 | N/A             | See Coverage             |
| Region 4: Joshua Saunders        | Duval           | NEFL COAD Meeting        |
| Region 5: Elizabeth Caison       | Lee             | FEPA Mid-Year Conference |
| Vacant                           | N/A             | See Coverage             |
| Region 6: Vacant                 |                 |                          |
| Region 7: Antonio Zapata         | DeSoto          | FROC Training Roadshow   |
| Region 8: Ja-Pheth Butler-Miller | Indian River    | Administrative Duties    |
| Region 9: Jacob Ginsberg         | DeSoto          | FROC Training Roadshow   |
| Region 10: Vacant                | N/A             | See Coverage             |

Region 3 Coverage Provided by Recovery Coordinator 2 & 4

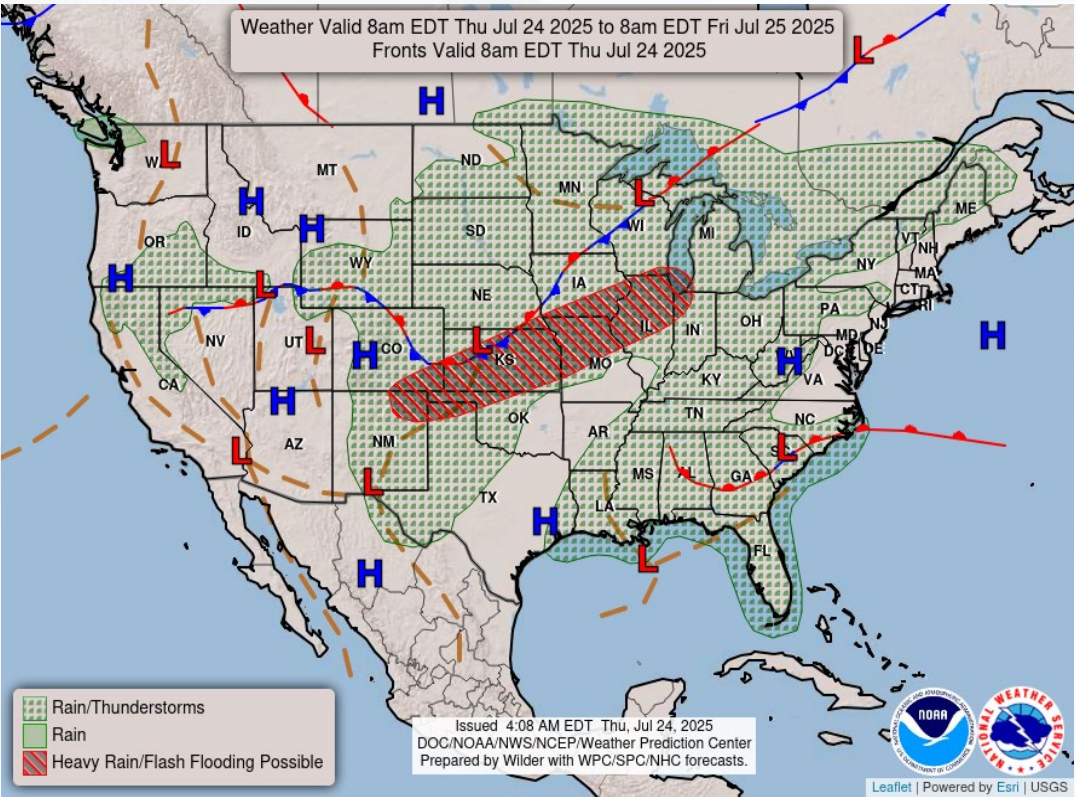
Region 6 Coverage Provided by Recovery Coordinator 5

Region 10 Coverage Provided by Recovery Coordinator 8

| Status                       |
|------------------------------|
| Normal Operations            |
| In Region / Delayed Response |
| Deployed / Delayed Response  |
| Out of Service / Unavailable |

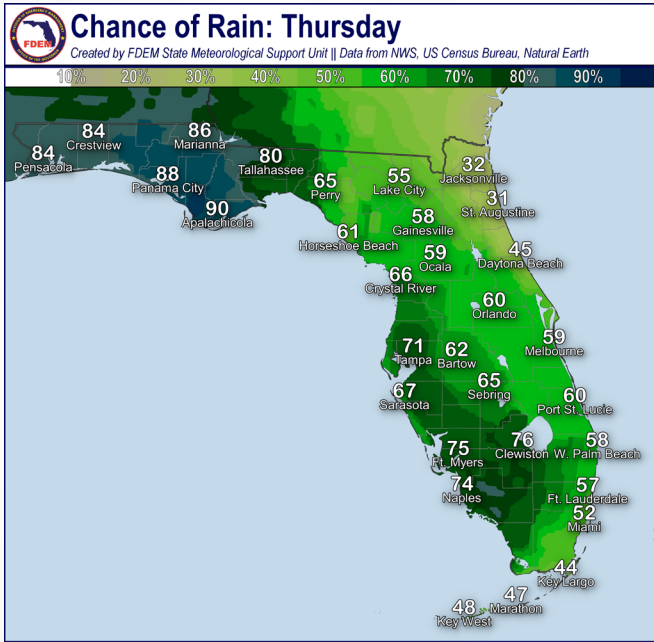
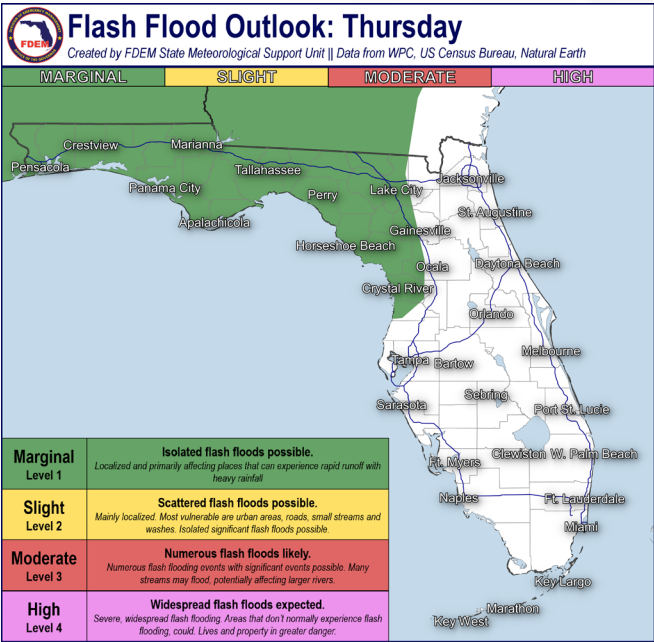


# Meteorology Summary



Today's Weather Map

| Threat                     | R1   | R2 | R3 | R4 | R5 | R6 | R7 | R8 | R9 | R10 |
|----------------------------|--|----|----|----|----|----|----|----|----|-----|
| Lightning                  | H  | H  | H  | M  | M  | H  | H  | M  | H  | M   |
| Tornado                    |  |    |    |    |    |    |    |    |    |     |
| Damaging Wind              | L  | L  | L  | L  | L  | L  | L  | L  | L  | L   |
| Hail                       |  |    |    |    |    |    |    |    |    |     |
| Flash Flooding             | L  | L  | L  |    | L  | L  |    |    |    |     |
| Excessive Heat             | M  | M  | M  | M  | M  | M  | M  | M  | M  | M   |
| Wildfire                   |  |    |    |    |    |    |    |    |    |     |
| Fog (Overnight)            |  |    |    |    |    |    |    |    |    |     |
| Rip Currents               | M  | H  | L  | M  | M  | L  |    | M  | L  | M   |
| Lake Okeechobee Elevation  | 11.99 ft. (1.69 ft. <u>Below</u> Normal)                   |    |    |    |    |    |    |    |    |     |
| Keetch-Byram Drought Index | 269 (-26) on a scale from 0 (very moist) to 800 (very dry) |    |    |    |    |    |    |    |    |     |





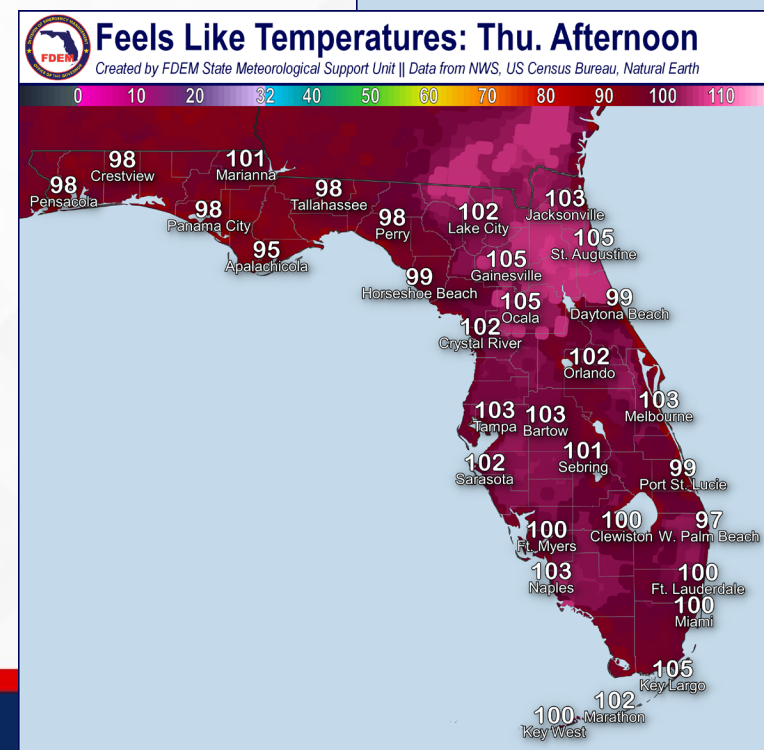
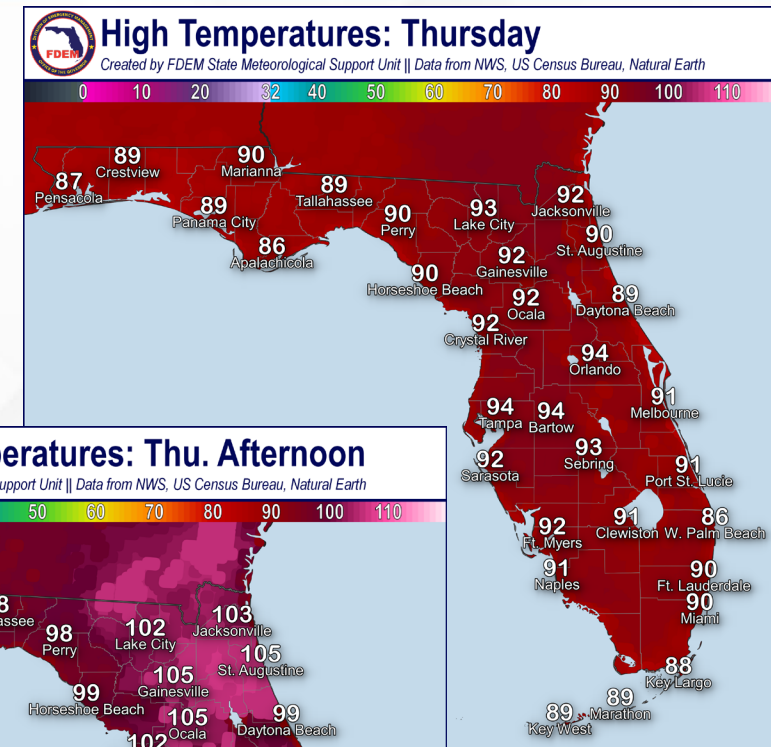
# Meteorology Summary

Statewide Overview, Next 24 Hours:

Disorganized scattered showers and thunderstorms are found off the Panhandle this morning as yesterdays upper-level disturbance that brought widespread rainfall moves away from the state. Behind this system, deep southerly flow and tropical moisture will remain across Florida promoting another day of scattered to numerous showers and thunderstorms with daytime heating (55-90% chance of rain). The greatest chance of rain is over the West Florida coast and Panhandle where a **Marginal Risk (level 1 of 4) for Flash Flooding** is outlooked. Here, prolonged and repeated rounds of thunderstorms may lead to instances of **ponding of water and isolated flash flooding**, especially in urban and poor-drainage locations. Thunderstorm chances will be more modest across the northeastern portion of the state, however the daily sea breeze may initiate some afternoon shower and thunderstorm activity. Any breaks in cloud cover may promote **locally embedded strong to severe thunderstorms** statewide which will be capable of producing frequent lightning, gusty winds, and heavy downpours.

**Warm and Muggy conditions** remain across the state today as high temperatures reach the upper 80s to lower 90s. More widespread cloud coverage and rainfall will limit the overall magnitude of the heat. However, **heat index values** will still reach into the **upper 90s across the western Florida Panhandle** where elevated rain chances are found, to **triple digits (100-110-degrees)** across the rest of the state.

As the disturbance continues to move westward over the north-central Gulf waters tonight, drier air will begin to filter in from the east. However, isolated to widely scattered off and on showers and thunderstorms will be possible throughout the overnight hours along the Panhandle and Gulf Coast (30-55% chance of rain). Low temperatures will fall into the middle to upper 70s and lower 80s across the state.





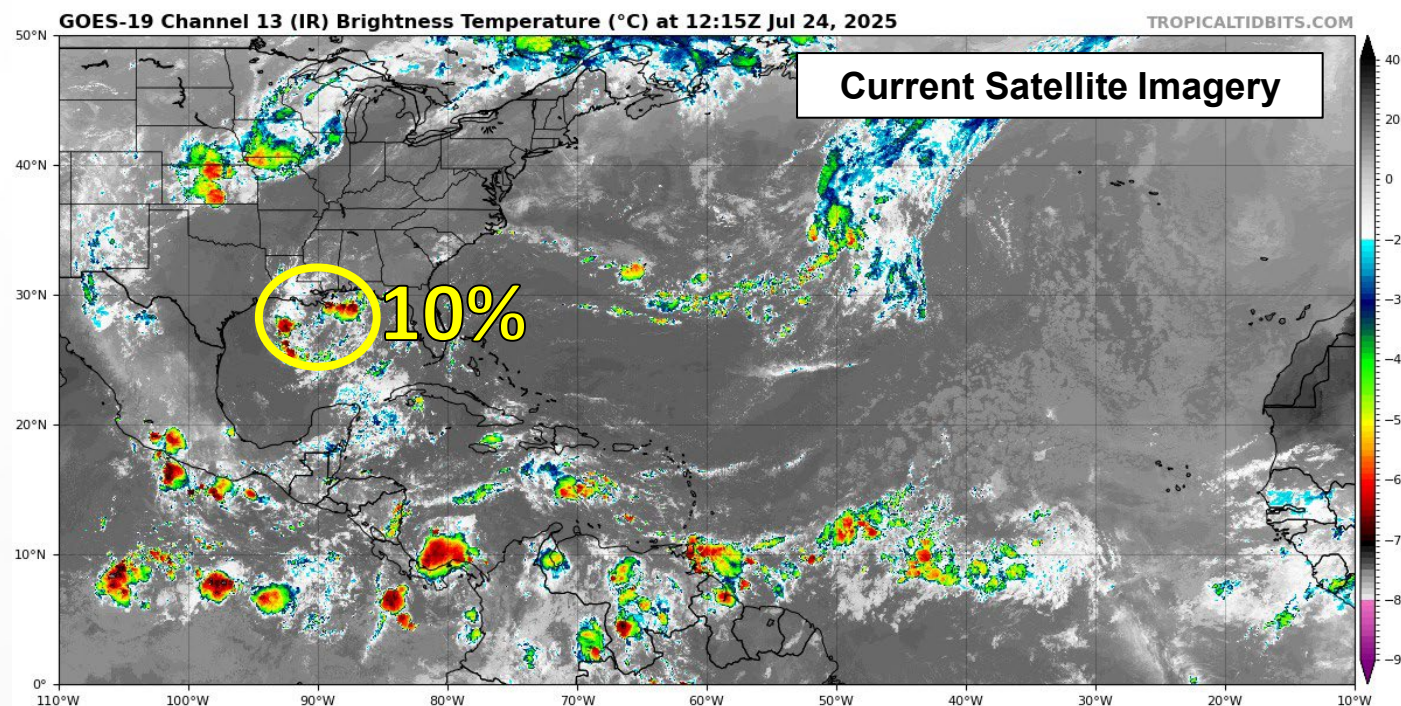
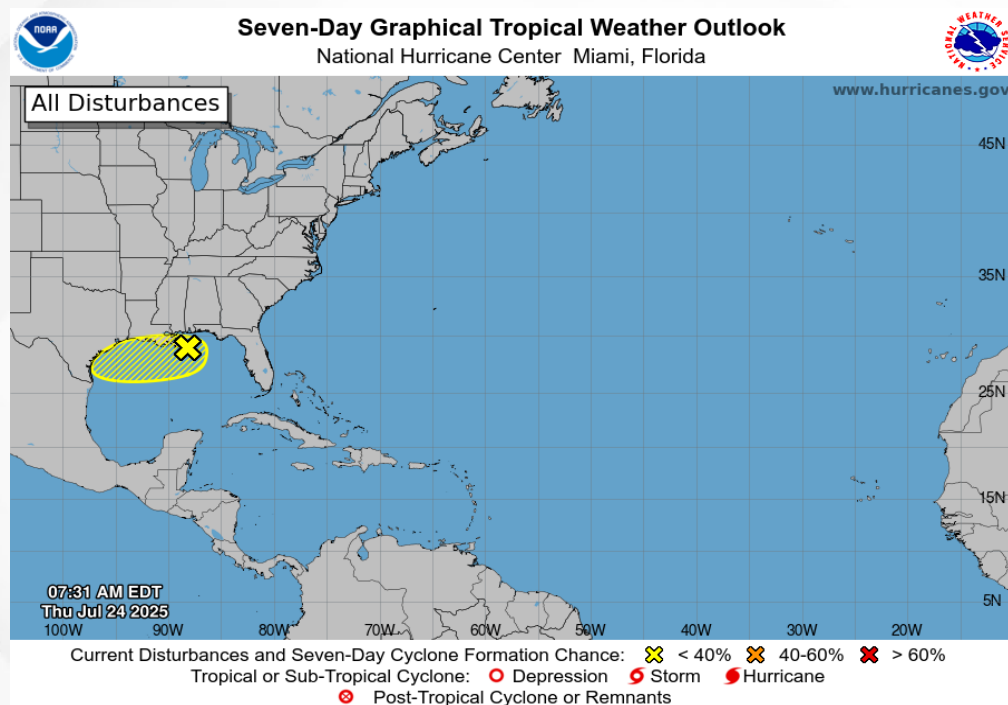
# Tropical Weather

For the latest on the tropics, please visit the National Hurricane Center (NHC) at [www.hurricanes.gov](http://www.hurricanes.gov).

**North-Central Gulf:** A weak low-pressure system over the north-central Gulf is producing disorganized showers and thunderstorms. Over the next day or two, this system will move westward over the north-central Gulf where some slow development is possible before it moves inland, ending its chances for development. *Regardless of development, local heavy rainfall is possible for portions of the northern Gulf coast through this weekend.*

\*Formation chance through 48 hours...**low...10%.**

\*Formation chance through 7 days...**low...10%.**





# Coastal Hazards & Hydrology

**Rip Currents:** There is a **moderate to high risk of rip currents** along Florida Panhandle beaches today and a **moderate risk of rip currents** along East Coast beaches. For the latest Rip Current Outlook, visit [www.weather.gov/beach](http://www.weather.gov/beach).

**Marine Hazards:** Wave heights of 1-2' can be expected statewide.

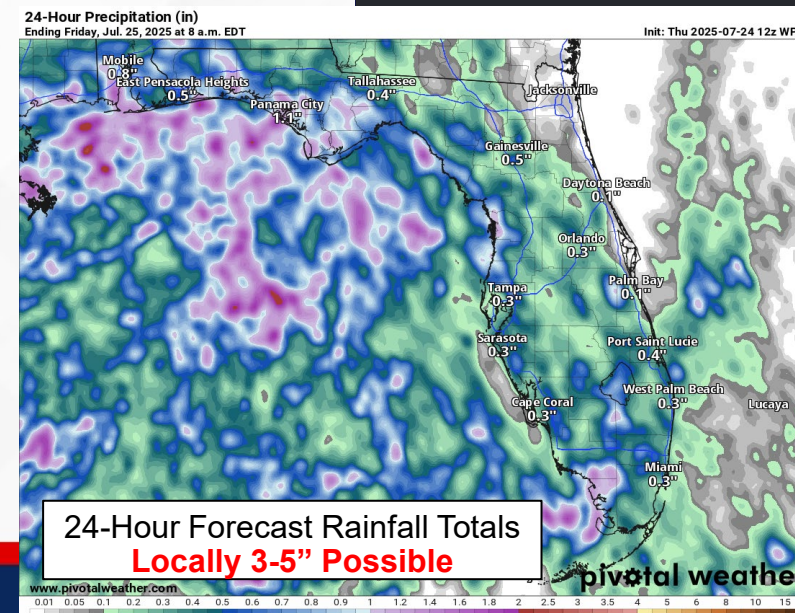
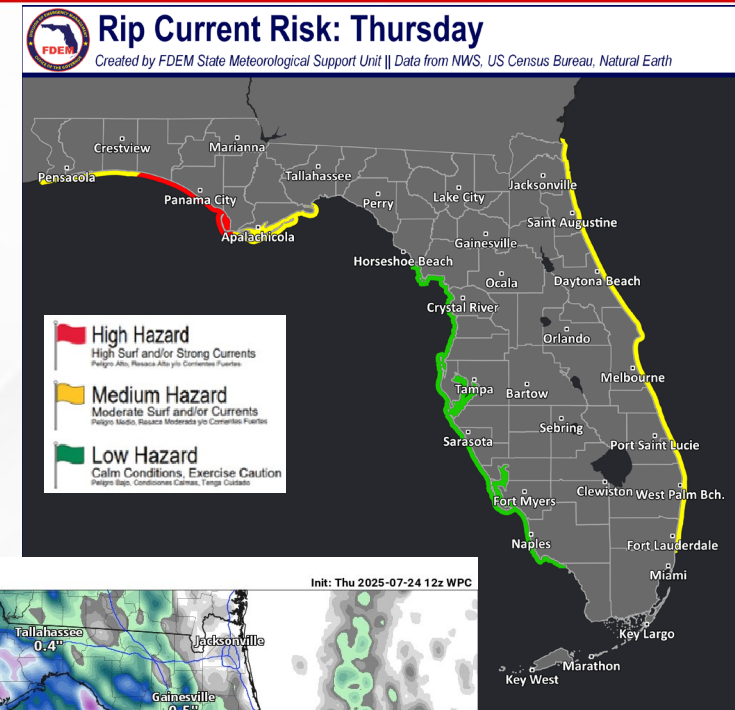
**Red Tide** has been not been observed along any Florida coastline over the past week (valid 7/18).

**Coastal Flooding:** There is no risk for coastal flooding today.

**Flash Flooding:** There is a **Marginal Risk (level 1 of 4) for Flash Flooding** outlooked across the Panhandle and Big Bend towards the I-75 corridor today where repeated rounds of heavy showers and thunderstorms are most likely. **Locally heavy downpours** could produce quick rainfall totals of 1-2", with isolated amounts of 3-5" possible especially over the Panhandle coastline. Instances of **ponding of water or isolated flash flooding** is possible across the entire state today with any repeated rounds of thunderstorms, especially in urban and poor-drainage areas. Locations that received rainfall previously this week and have already saturated soils will be most prone to localized flash flooding.

**Riverine Flooding:** The [Ocklawaha River at Rodman Dam](#) remains at **Minor Flood Stage** this morning and the [Fisheating Creek at Palmdale](#) remains at **Action Stage (bank-full)** this morning as well the upstream gauge [near Lakeport at Highway 78](#). Although additional riverine responses are not expected, conditions will be heavily dependent upon where any prolonged thunderstorm activity occurs across each basin. Areas that receive repeated rounds of heavy thunderstorms today may experience riverine responses. Additional updates to these forecasts will be likely through the week. For more information, visit the [River Forecast Center](#).

**Lake Okeechobee's** average elevation is 11.99 feet, which is within the operational band and is 1.69 feet below normal for this time of year.



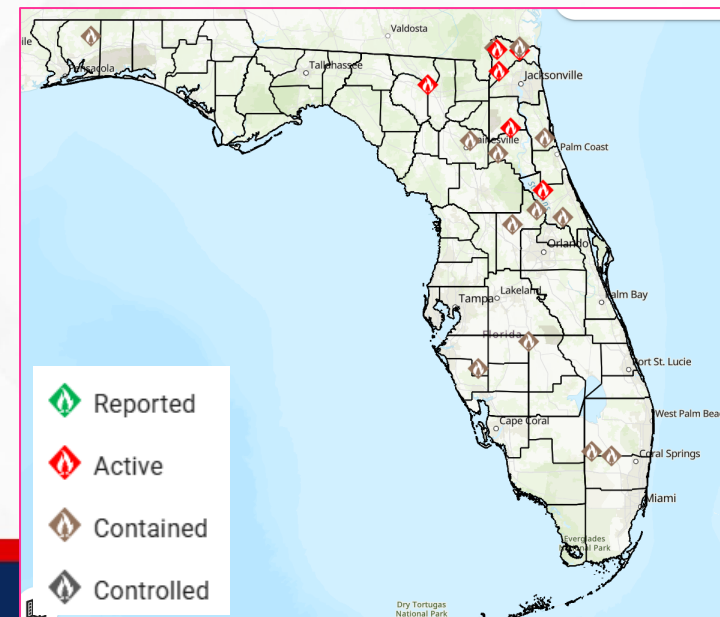
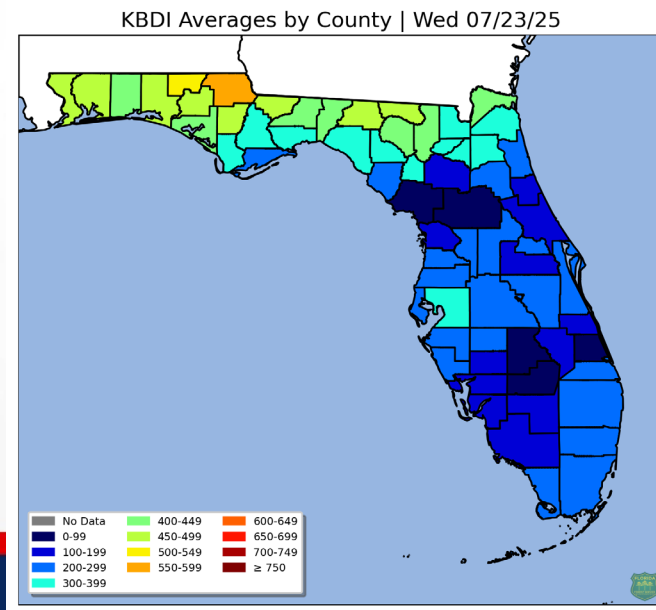
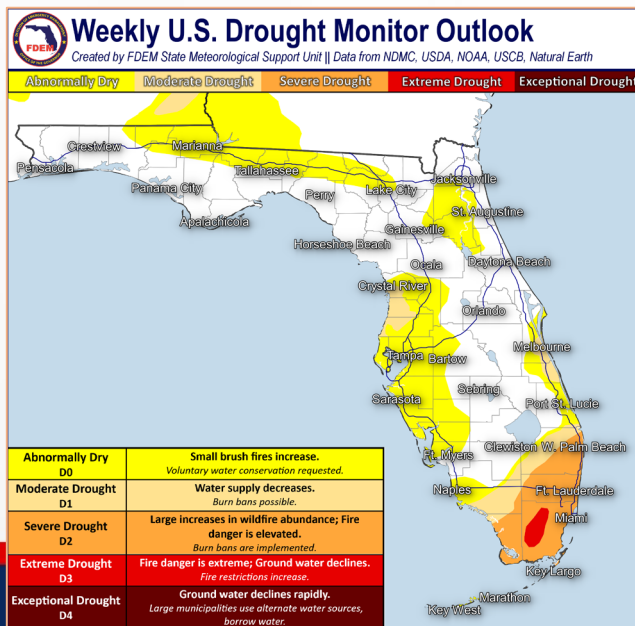


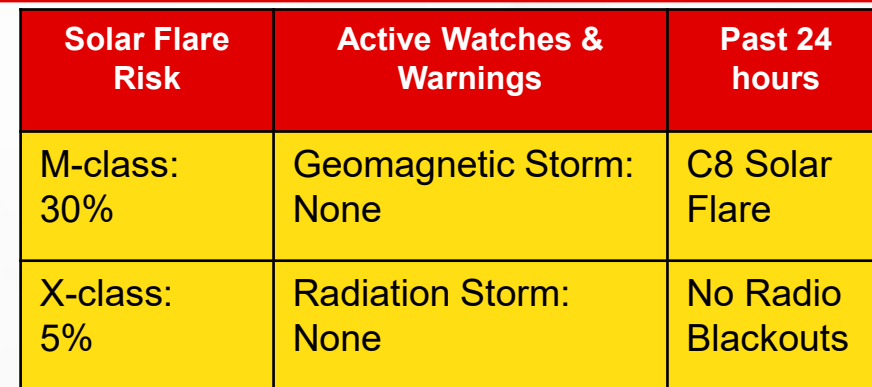
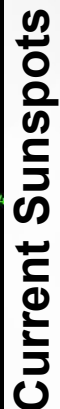
# Drought & Fire Weather

**Fire Weather:** Widespread shower and thunderstorm activity is expected statewide as deep southerly flow keeps tropical moisture entrenched across the state for another day. Relative humidity values will be well above critical threshold values for much of the state (55-80% RH values), with the northeastern portion of the state seeing the most modest values. Widespread shower and thunderstorm activity, as well as improving soil/vegetation saturation, will keep the overall wildfire threat low today. However, any thunderstorms that do develop will be capable of producing very frequent lightning and gusty/erratic winds which may lead to new ignitions or localized spread of existing brush fires. According to the [Florida Forest Service](#), there are 24 active wildfires across the state burning approximately 15,098 acres.

**Drought:** Significant improvements were made over Marion County with the recent active weather pattern that brought plentiful rainfall the past two weeks of 8-14" of rain. A **Moderate drought (level 1 of 4)** was completely removed within this region near the Ocala National Forest. Otherwise, no changes statewide for the drought outlook. A **Severe drought (level 2 of 4)** persists across Southeast Florida where monthly rainfall deficits remain 2-4" for many locations and an **Extreme drought (level 3 of 4)** persists over western Miami-Dade County. Portions of the Nature Coast remain in **Moderate Drought (level 1 of 4)** where monthly rainfall totals similarly remain below average the past month. Although not in an official drought category yet, portions of the northern Panhandle may see an upgrade to Moderate Drought if dry conditions persist through the next week.

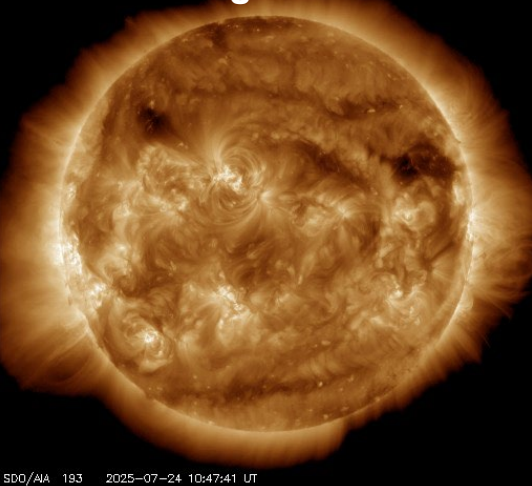
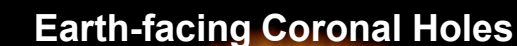
The **Keetch-Byram Drought Index** average for Florida is **269 (-26)** on a scale from 0 (very wet) to 800 (very dry). Two Florida counties have an average KBDI over 500 (drought/increased fire danger) including Jackson and Holmes. Hamilton, Jefferson, and Madison counties have returned to an average KBDI below 500 with recent rainfall.





| 7/24  | 7/25   |
|---|--|
| Max Kp= 4 (G0)  | Max Kp= 4 (G0)   |
| Chance of<br>minor activity = 25%<br>severe activity = 5% | Chance of<br>minor activity = 5%<br>severe activity = 1% |

**Space Weather:** Solar activity remains low today with a chance for a strong solar flare (M-class) and minor to moderate (R1-R2) radio blackouts accompanying any strong flares that develop. Enhanced solar wind conditions will continue today and remain disturbed through the next couple of days due to coronal hole influences. As a result, unsettled to active geomagnetic activity is expected. G1 (Minor) geomagnetic storming is expected early Thursday before waning and returning to quiet to unsettled conditions tomorrow. The overall space weather threat to Florida is low.





# SWO Communications Systems & Contact Information

| Equipment         | Contact   | Status      | Comments |
|-------------------|---|-------------|----------|
| Phone:            | 800-320-0519, 850-815-4001, 850-591-0071 (Backup Cell)                                    | Operational |          |
| Backup Landline:  | 850-487-3234, 850-487-3228  | Operational |          |
| Fax:              | 850-815-4979  | Operational |          |
| Email:            | <a href="mailto:SWP@em.myflorida.com">SWP@em.myflorida.com</a>                            | Operational |          |
| SWO Tracker:      | <a href="https://apps.floridadisaster.org/SWO/">https://apps.floridadisaster.org/SWO/</a> | Operational |          |
| SLERS:            | DEM Statewide   | Operational |          |
| FNARS:            | WGY974  | Operational |          |
| Federal NAWAS:    | State Watch Office  | Operational |          |
| EMnet Message:    | FL.000- State Watch Office  | Operational |          |
| EMnet Voice:      | FL SWP- State Watch Office  | Operational |          |
| IPAWS:            | LP.1 Stations via Emnet   | Operational |          |
| FIN:              | SOFEOC  | Operational |          |
| Satellite Phones: | MSAT 888-890-5178 or Iridium 480-263-8838   | Operational |          |
| Website:          | <a href="http://www.floridadisaster.org">http://www.floridadisaster.org</a>               | Operational |          |

Users wishing to subscribe (approval pending) to this distribution list, register at:

[https://public.govdelivery.com/accounts/FLDEM/subscriber/new?topic\\_id=Morning\\_SITREP](https://public.govdelivery.com/accounts/FLDEM/subscriber/new?topic_id=Morning_SITREP)