



Florida Division of Emergency Management State Watch Office

Morning Situation Report

Friday, July 11, 2025



State Emergency Operations Center Activation Level

Level 2 Activation



SERT On-Call Personnel

Position	Personnel	Phone	Email
Operations Chief	Woody Harvey	(850) 591-7939	Woodham.Harvey@em.myflorida.com
Watch Officer	Caitlyn Gillespie	(850) 688-2119	Caitlyn.Gillespie@em.myflorida.com
Duty Officer	Jay Griffin	(850) 524-4094	Kellen.Griffin-Jay@em.myflorida.com
Operations Officer- Day	Lauren Warfield	(850) 815-4001	SWP@em.myflorida.com
Operations Officer- Swing	Zachary Remante	(850) 815-4001	SWP@em.myflorida.com
Operations Officer- Night	Jim Lawhon	(850) 815-4001	SWP@em.myflorida.com
Meteorologist	Caitlyn Gillespie	(850) 688-2119	Caitlyn.Gillespie@em.myflorida.com
Plans Chief	Kaylynn Perry	(850) 254-5657	Plans_Command@em.myflorida.com
Logistics Chief	Christina Goetzman	(850) 519-8581	Christina.Goetzman@em.myflorida.com
Human Services Director	Pam Hughes	(850) 528-5638	Pamela.Hughes@em.myflorida.com
Emergency Services	Tim Kenyon	(850) 591-7732	Tim.Kenyon@em.myflorida.com
Infrastructure Branch Director	Christina Goetzman	(850) 519-8581	Christina.Goetzman@em.myflorida.com
ESF 8 On-Call	Hunter Stafford	(866) 786-4673	DLDOHDutyOfficers@flhealth.gov
Public Information Officer	Stephanie Hartman	(850) 570-3053	Stephanie.Hartman@em.myflorida.com
DEM Finance and Admin	Jeremy Smith	(850) 273-1273	Jeremy.Smith@em.myflorida.com



Response Regional Coordination Team



Team	County Location	Visits
Region 1: Jim Roberts	Jackson, Liberty	Equipment Pick-up / Equipment Drop off / Everbridge-IPAWS Mtg (V)
Region 2: Enrique Gaston	Leon	HQ Visit/Meeting
Region 3: Glen Hammers	Suwannee, Columbia	LSA Meeting
Region 4: Tara Kostich	Clay	Hurricane Exercise Planning Meeting (Orange Park)
Region 5: Austin Beeghly	Orange	EM Meeting
Region 6: Paul Siddall	Out of Service	Leave (See Coverage)
Region 7: Kathryn Hollenbeck	In Region	On-Call Status
Region 8: Mason Kozac	Indian River	Office Admin
Region 9: Vacant	N/A	N/A
Region 10: Claudia Baker	Miami-Dade	USCG D7 Change of Command Ceremony/ Exec Support

Region 6 Coverage Provided by Response Coordinator 5
Region 9 Coverage Provided by Recovery Coordinator 9

Status
Normal Operations
Out of Service / Unavailable



Recovery Regional Coordination Team

Team	County Location	Status / Activities
Region 1: Allison Blevins	Bay	Administrative Duties
Region 2: Justin Lazzara	Leon	Administrative Duties
Region 3: Vacant	N/A	See Coverage
Region 4: Joshua Saunders	Clay	Municipality Ex. Planning Meeting
Region 5: Elizabeth Caison	Leave	See Coverage
Vacant	N/A	See Coverage
Region 6: Vacant		
Region 7: Antonio Zapata	Polk	Vehicle Maintenance
Region 8: Ja-Pheth Butler-Miller	Leave	See Coverage
Region 9: Jacob Ginsberg	Collier	County EM Meeting
Region 10: Vacant	N/A	See Coverage

Region 3 Coverage Provided by Recovery Coordinator 2 & 4

Region 5 Coverage Provided by Recovery Coordinator 4

Region 6 Coverage Provided by Recovery Coordinator 7

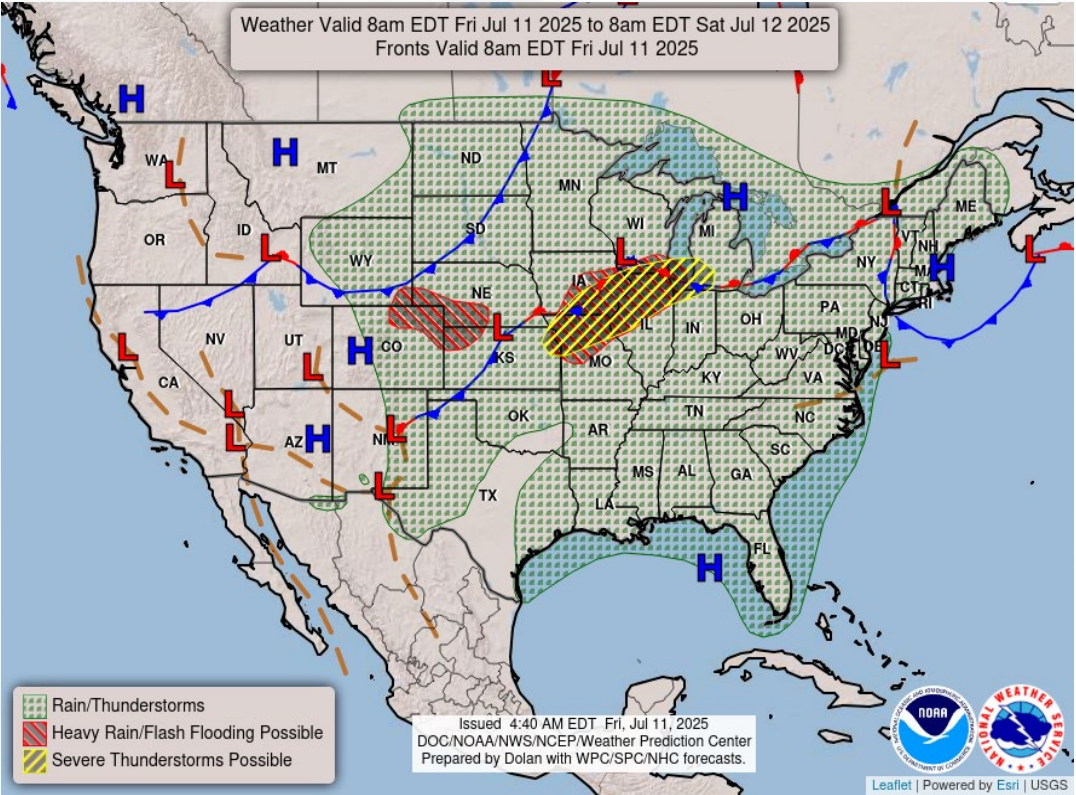
Region 8 Coverage Provided by Recovery Coordinator 7

Region 10 Coverage Provided by Recovery Coordinator 9

Status
Normal Operations
In Region / Delayed Response
Deployed / Delayed Response
Out of Service / Unavailable

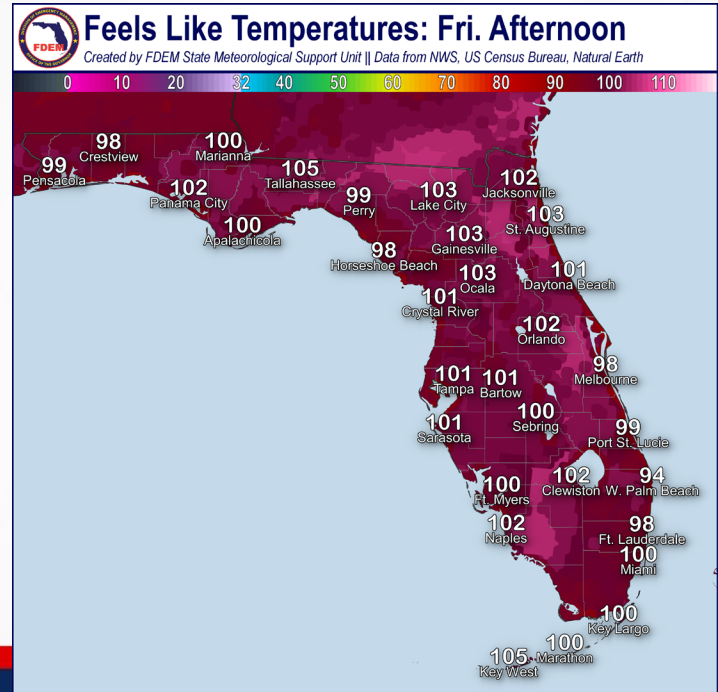
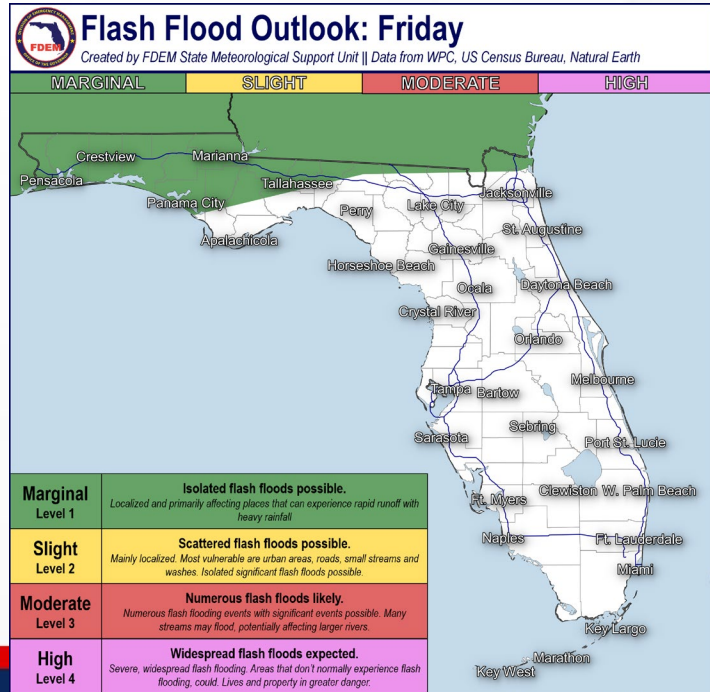


Meteorology Summary



Today's Weather Map

Threat	R1	R2	R3	R4	R5	R6	R7	R8	R9	R10
Lightning	M	M	L	L	H	M	H	H	H	H
Tornado										
Damaging Wind	L	L	L	L	L	L	L	L	L	L
Hail										
Flash Flooding	L	L	L	L				L	L	L
Excessive Heat	M	M	M	M	M	M	M	M	M	M
Wildfire										
Fog (Overnight)		L	L	L						
Rip Currents	M	H	L	M	M	L		M	L	M
Lake Okeechobee Elevation	11.48 ft. (2.07 ft. <u>Below</u> Normal)									
Keetch-Byram Drought Index	181 (+3) on a scale from 0 (very moist) to 800 (very dry)									





Meteorology Summary

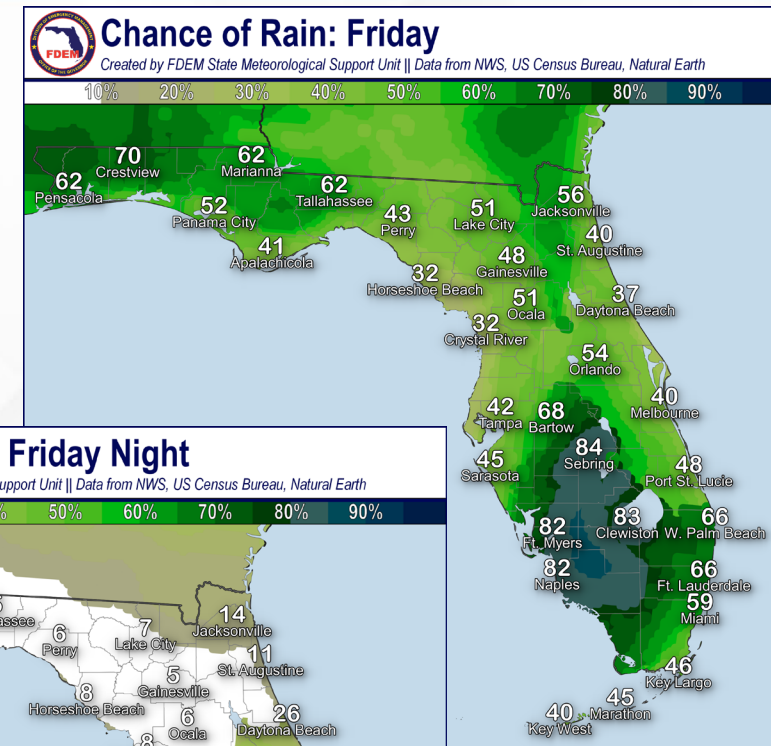
Statewide Overview, Next 24 Hours:

A near carbon copy to yesterday can be expected once again today. Coastal showers and thunderstorms have developed this morning, which will gradually move inland throughout the day with help of daytime heating. Scattered to numerous showers and thunderstorms can be expected across the state as the typical sea breeze thunderstorm pattern develops throughout the day (50-85% chance of rain). With the typical summertime thunderstorm pattern, **embedded locally strong to severe thunderstorms** may also be possible. **Stronger thunderstorm activity** will be capable of producing frequent lightning, damaging wind gusts (45-60 mph), and heavy downpours. There is a **Marginal Risk (level 1 of 4) for Flash Flooding** along the Panhandle and the I-10 corridor through today where abundant moisture could provide showers and thunderstorms with the ability to produce heavy downpours that could **lead to flash flooding and ponding of water**.

Hot and humid conditions can be expected throughout the state. High temperatures will continue to reach the upper 80s to middle 90s this afternoon. **Heat index values** will reach **triple digits (100-107-degrees)** throughout the state. Several areas across the state could see heat index values approach **Heat Advisory criteria**, and a brief one cannot be ruled out later today.

Showers and thunderstorms will continue throughout the evening hours before shifting offshore and dissipating overnight. Mostly dry conditions will return overnight throughout the state, but some lingering showers and embedded rumbles of thunder may be possible over the adjacent coastal waters (15-30% chance of rain). Instances of **patchy fog** cannot be ruled out early Thursday morning as well.

Low temperatures will fall into the 70s and lower 80s overnight.

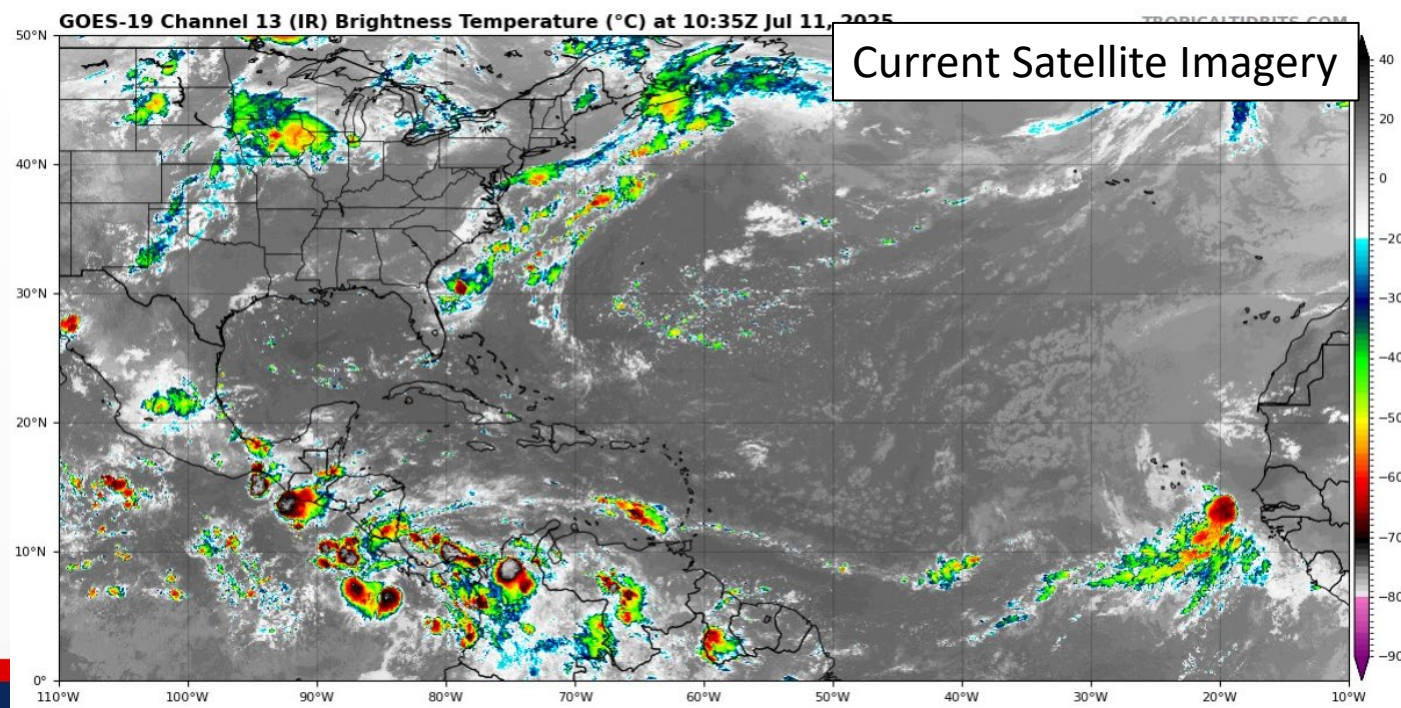
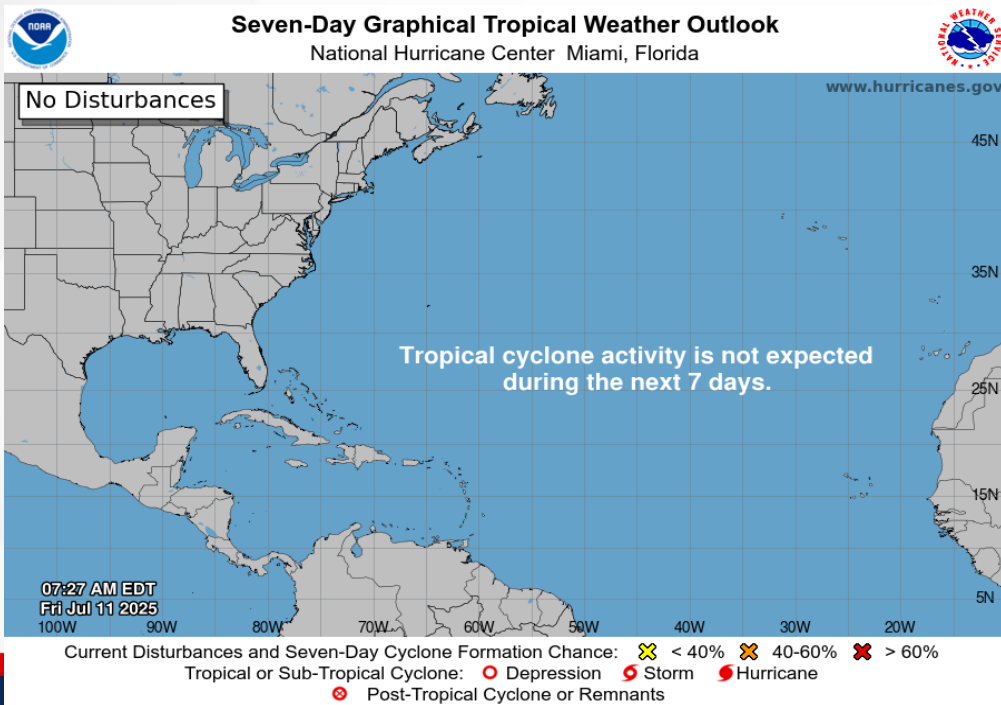




Tropical Weather

For the latest on the tropics, please visit the National Hurricane Center (NHC) at www.hurricanes.gov.

Tropical cyclone activity is **not expected** during the next 7 days in the Atlantic basin.





Coastal Hazards & Hydrology

Rip Currents: There is a **moderate risk of rip currents** along Panhandle and East Coast beaches with a **locally high risk** along Gulf County beaches. For the latest Rip Current Outlook, visit www.weather.gov/beach.

Marine Hazards: Wave heights of 1-2' can be expected along beaches statewide, with possible breaking waves upwards of 3' along Northeast and East-Central Florida beaches.

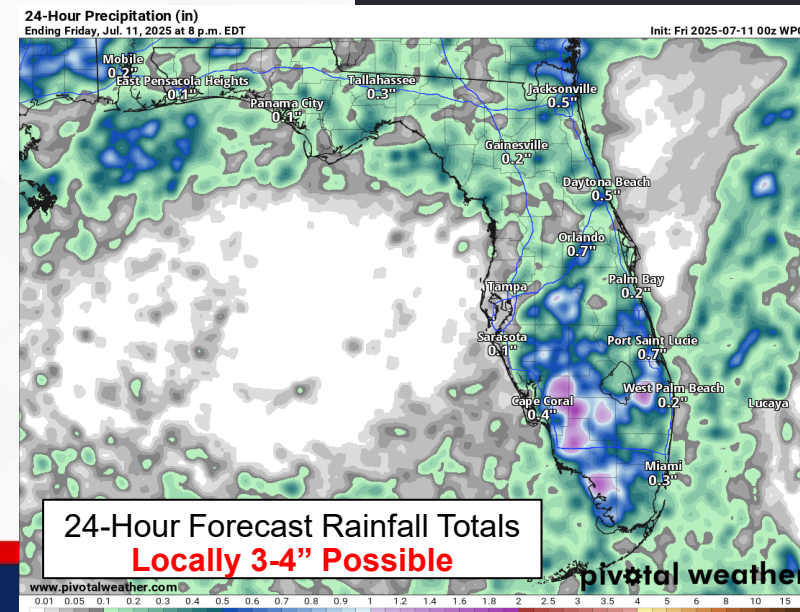
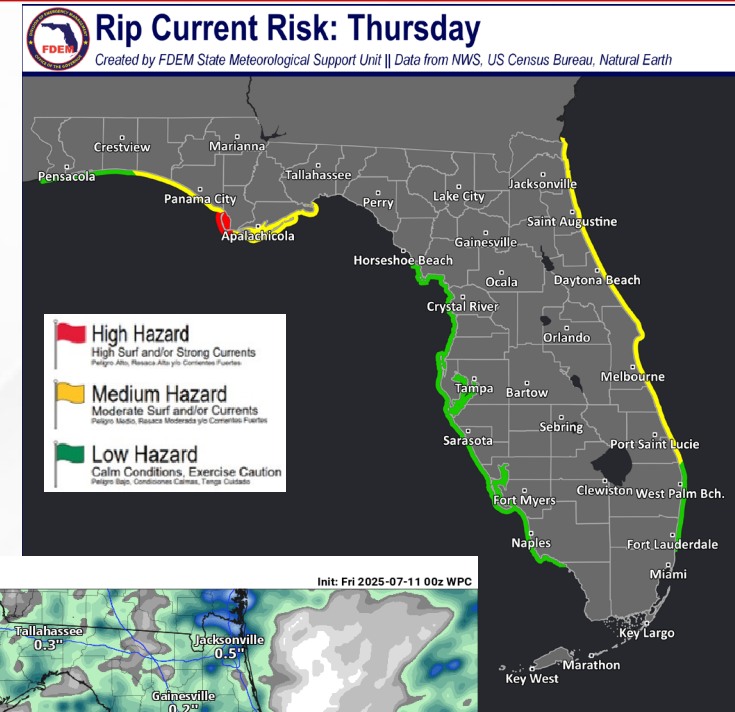
Red Tide has been not been observed along any Florida coastline over the past week (valid 6/27).

Coastal Flooding: There is no risk for coastal flooding today.

Flash Flooding: The Weather Prediction Center (WPC) is outlooking a **Marginal Risk (level 1 of 4) for Flash Flooding** across the Panhandle and along the I-10 corridor where shower and thunderstorm activity may be capable of producing heavy and intense downpours that lead **to instances of flash flooding**. Abundant moisture and the daily sea breeze will give way to multiple rounds of shower and thunderstorm activity, some of which may be over the same areas that have already seen heavy rainfall the last few days. Rainfall totals of 1-2" can be expected with **locally higher totals** upwards of 3-4" possible.

Riverine Flooding: Multiple rounds of widespread shower and thunderstorm activity will likely result in water level rises along West-Central Florida rivers, creeks, streams, and waterways. The [Myakka River at Myakka River State Park](#) could rise near or into Action Stage (bank-full) in the next couple of days. For more information, visit the [River Forecast Center](#).

Lake Okeechobee's average elevation is 11.48 feet, which is within the operational band and is 2.07 feet below normal for this time of year.





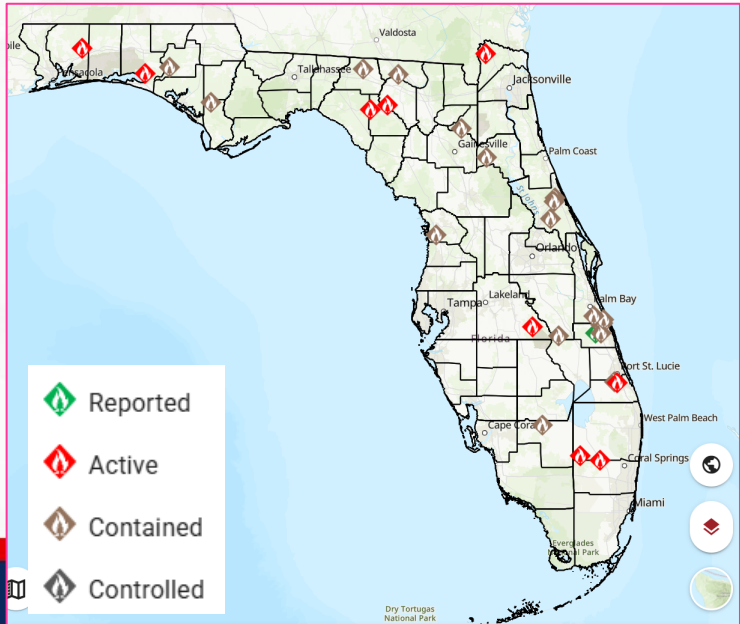
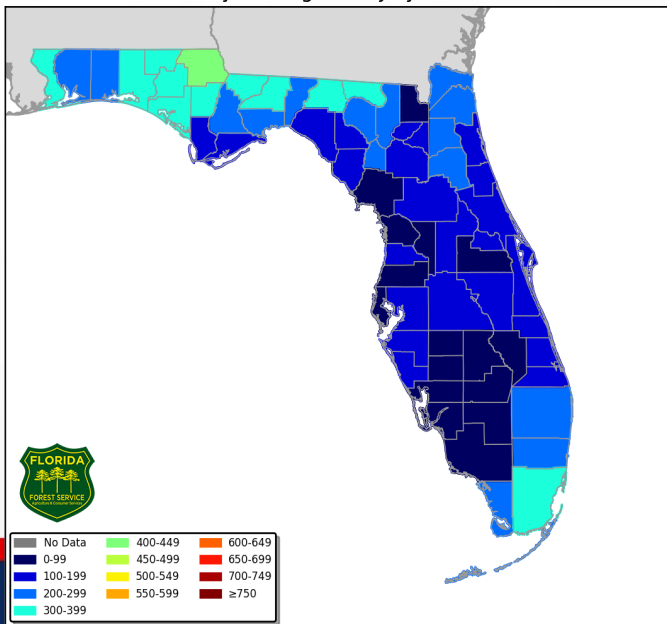
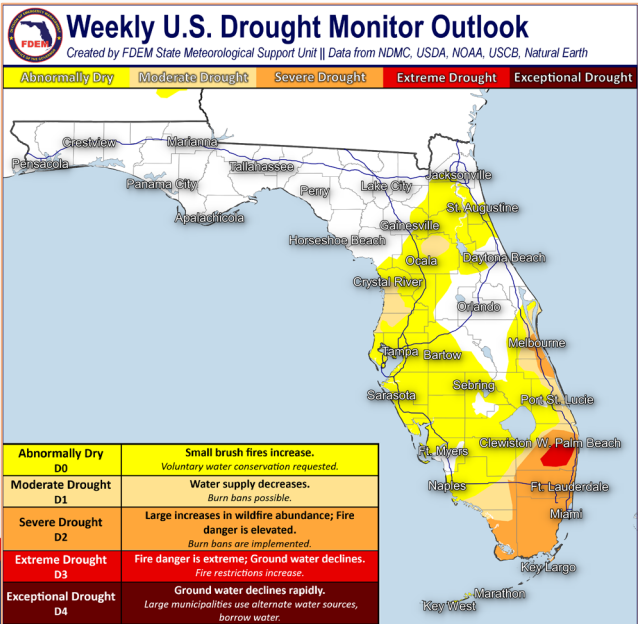
Drought & Fire Weather

Fire Weather: Abundant moisture will help scattered to numerous showers and thunderstorms to develop across the state throughout the daytime hours. Relative humidity values will remain well above critical thresholds. Thunderstorms will be capable of producing frequent and erratic winds, which could spread new or ongoing wildfires over areas that have missed out on the recent heavier rainfall; however, saturated soils/vegetation will largely limit the wildfire threat statewide. Instances of **locally patchy fog** possible be possible early in the morning. According to the [Florida Forest Service](#), there are 28 active wildfires across the state burning approximately 10,970 acres.

Drought: Improvements continue to be made along the Florida West Coast with the wet and active weather pattern that brought plentiful rainfall last week of 2-4". **Moderate drought (level 1 of 4)** was nearly removed along the Florida West Coast through Central Collier County, except for a portion of Nature Coast where longer term drought conditions and lower streamflow. Conditions largely remain unchanged along the I-95 corridor, with **severe drought (level 2 of 4)** expanding across Southeast Florida. Central Palm Beach County continues to see **extreme drought conditions (level 3 of 4)** where the heaviest rainfall continues to miss the area.

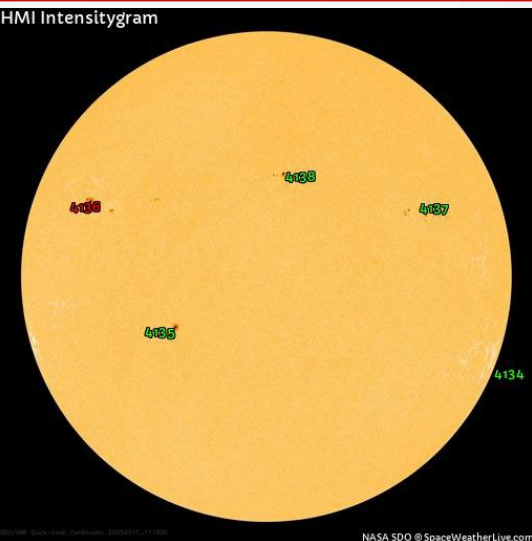
The **Keetch-Byram Drought Index** average for Florida is **181 (+3)** on a scale from 0 (very wet) to 800 (very dry). Zero Florida counties have an average KBDI over 500 (drought/increased fire danger).

Keetch Byram Drought Index (KBDI)
County Averages for July 10, 2025

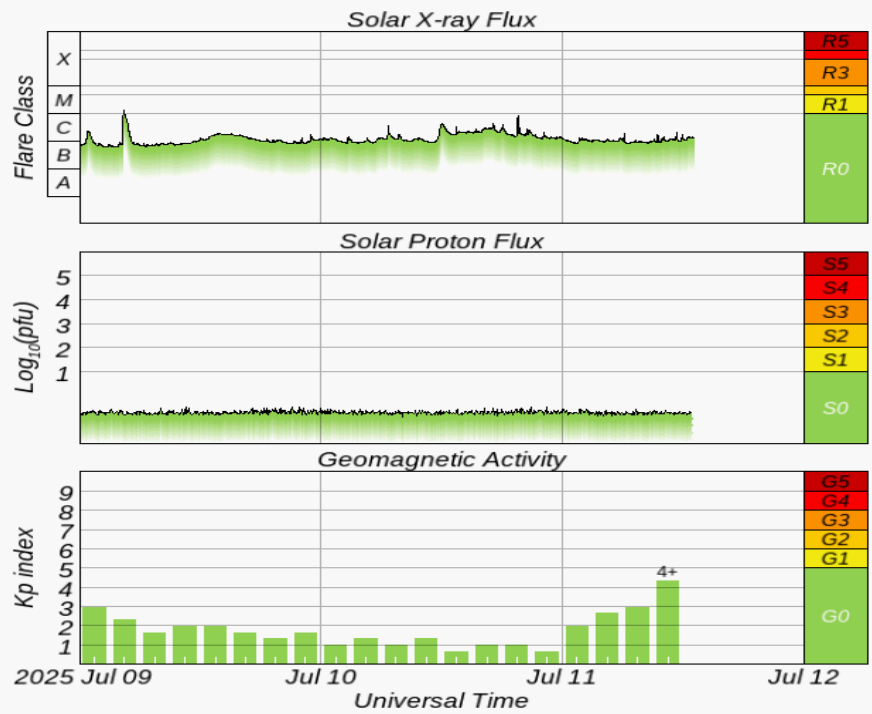
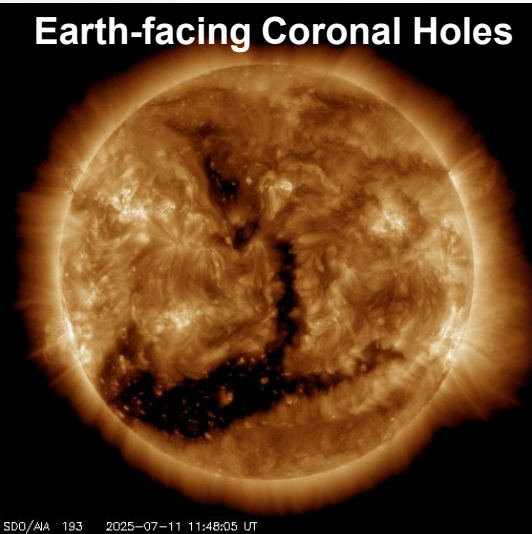




Space Weather



Current Sunspots



Solar Flare Risk	Active Watches & Warnings	Past 24 hours
M-class: 35%	Geomagnetic Storm: None	C9 Solar Flare
X-class: 1%	Radiation Storm: None	No Radio Blackouts

48-Hour Geomagnetic Forecast	
7/11	7/12
Max Kp= 2 (G0)	Max Kp= 3 (G0)
Chance of minor activity = 1% severe activity = 1%	Chance of minor activity = 5% severe activity = 1%

Space Weather: Solar activity will continue at low levels, with a chance for strong (M-class) solar flares due to newer sunspot #4136 through the end of the week and into the weekend. Minor to moderate (R1-R2) radio blackouts can be expected to accompany any M-class solar flares that develop. Nominal solar wind conditions will continue through today before becoming enhanced this weekend. Mostly quiet geomagnetic conditions will persist through today. Unsettled to active geomagnetic conditions will return tomorrow with the enhanced solar wind conditions with Coronal Hole High Solar Stream (CH HSS) winds flowing towards Earth. The overall space threat to Florida is low.



SWO Communications Systems & Contact Information

Equipment	Contact	Status	Comments
Phone:	800-320-0519, 850-815-4001, 850-591-0071 (Backup Cell)	Operational	
Backup Landline:	850-487-3234, 850-487-3228	Operational	
Fax:	850-815-4979	Operational	
Email:	SWP@em.myflorida.com	Operational	
SWO Tracker:	https://apps.floridadisaster.org/SWO/	Operational	
SLERS:	DEM Statewide	Operational	
FNARS:	WGY974	Operational	
Federal NAWAS:	State Watch Office	Operational	
EMnet Message:	FL.000- State Watch Office	Operational	
EMnet Voice:	FL SWP- State Watch Office	Operational	
IPAWS:	LP.1 Stations via Emnet	Operational	
FIN:	SOFEOC	Operational	
Satellite Phones:	MSAT 888-890-5178 or Iridium 480-263-8838	Operational	
Website:	http://www.floridadisaster.org	Operational	

Users wishing to subscribe (approval pending) to this distribution list, register at:

https://public.govdelivery.com/accounts/FLDEM/subscriber/new?topic_id=Morning_SITREP