



# **Florida Division of Emergency Management State Watch Office**

## **Morning Situation Report**

Monday, July 7, 2025



# State Emergency Operations Center Activation Level

Level 2 Activation



# SERT On-Call Personnel

Position	Personnel	Phone	Email
Operations Chief	Amy Godsey	(850) 519-8483	<a href="mailto:Amy.Godsey@em.myflorida.com">Amy.Godsey@em.myflorida.com</a>
Watch Officer	Caitlyn Gillespie	(850) 688-2119	<a href="mailto:Caitlyn.Gillespie@em.myflorida.com">Caitlyn.Gillespie@em.myflorida.com</a>
Duty Officer	Jeremy Whitt	(850) 755-8521	<a href="mailto:Jeremy.Whitt@em.myflorida.com">Jeremy.Whitt@em.myflorida.com</a>
Operations Officer- Day	Austin Johnson	(850) 815-4001	<a href="mailto:SWP@em.myflorida.com">SWP@em.myflorida.com</a>
Operations Officer- Swing	Kaya Dungey	(850) 815-4001	<a href="mailto:SWP@em.myflorida.com">SWP@em.myflorida.com</a>
Operations Officer- Night	Matthew Peloso	(850) 815-4001	<a href="mailto:SWP@em.myflorida.com">SWP@em.myflorida.com</a>
Meteorologist	Kennedy Tartt	(850) 567-6368	<a href="mailto:Kennedy.Tartt@em.myflorida.com">Kennedy.Tartt@em.myflorida.com</a>
Plans Chief	Kaylynn Perry	(850) 254-5657	<a href="mailto:Plans_Command@em.myflorida.com">Plans_Command@em.myflorida.com</a>
Logistics Chief	Christina Goetzman	(850) 519-8581	<a href="mailto:Christina.Goetzman@em.myflorida.com">Christina.Goetzman@em.myflorida.com</a>
Human Services Director	Pam Hughes	(850) 528-5638	<a href="mailto:Pamela.Hughes@em.myflorida.com">Pamela.Hughes@em.myflorida.com</a>
Emergency Services	Tim Kenyon	(850) 591-7732	<a href="mailto:Tim.Kenyon@em.myflorida.com">Tim.Kenyon@em.myflorida.com</a>
Infrastructure Branch Director	Christina Goetzman	(850) 519-8581	<a href="mailto:Christina.Goetzman@em.myflorida.com">Christina.Goetzman@em.myflorida.com</a>
ESF 8 On-Call	Hunter Stafford	(866) 786-4673	<a href="mailto:DLDOHDutyOfficers@flhealth.gov">DLDOHDutyOfficers@flhealth.gov</a>
Public Information Officer	Stephanie Hartman	(850) 570-3053	<a href="mailto:Stephanie.Hartman@em.myflorida.com">Stephanie.Hartman@em.myflorida.com</a>
DEM Finance and Admin	Jeremy Smith	(850) 273-1273	<a href="mailto:Jeremy.Smith@em.myflorida.com">Jeremy.Smith@em.myflorida.com</a>



# Response Regional Coordination Team



Team	County Location	Visits
Region 1: Jim Roberts	Gadsen	Office Admin (AM) / On Call Status (PM)
Region 2: Enrique Gaston	Leon	FAMU EM Meeting
Region 3: Glen Hammers	Out of Service	Leave (See Coverage)
Region 4: Tara Kostich	Clay	Virtual AWR Training Courses
Region 5: Austin Beeghly	Orange, Marion	EM Meeting / Vehicle Maintenance
Region 6: Paul Siddall	Out of Service	Leave (See Coverage)
Region 7: Kathryn Hollenbeck	Polk	Office Admin
Region 8: Mason Kozac	Indian River, St Lucie	Office Admin
Region 9: Vacant	N/A	N/A
Region 10: Claudia Baker	Out of Service	Leave (See Coverage)

Region 3 Coverage Provided by Response Coordinator 4  
Region 6 Coverage Provided by Response Coordinator 7  
Region 9 Coverage Provided by Recovery Coordinator 9  
Region 10 Coverage Provided by Response Coordinator 8

Status
Normal Operations
Out of Service / Unavailable



# Recovery Regional Coordination Team

Team	County Location	Status / Activities
Region 1: Allison Blevins	Walton	Admin Duties / Team Call
Region 2: Justin Lazzara	Leon	EM Meeting / Team Call
Region 3: Vacant	N/A	See Coverage
Region 4: Joshua Saunders	Baker	EM Meeting / Team Call
Region 5: Elizabeth Caison	Leave	See Coverage
Vacant	N/A	See Coverage
Region 6: Vacant		
Region 7: Antonio Zapata	Polk	Admin Duties / Team Call
Region 8: Ja-Pheth Butler-Miller	Indian River	Admin Duties / Team Call
Region 9: Jacob Ginsberg	Sarasota	Admin Duties / Team Call
Region 10: Vacant	N/A	See Coverage

Region 3 Coverage Provided by Recovery Coordinator 2 & 4

Region 5 Coverage Provided by Recovery Coordinator 8

Region 6 Coverage Provided by Recovery Coordinator 7

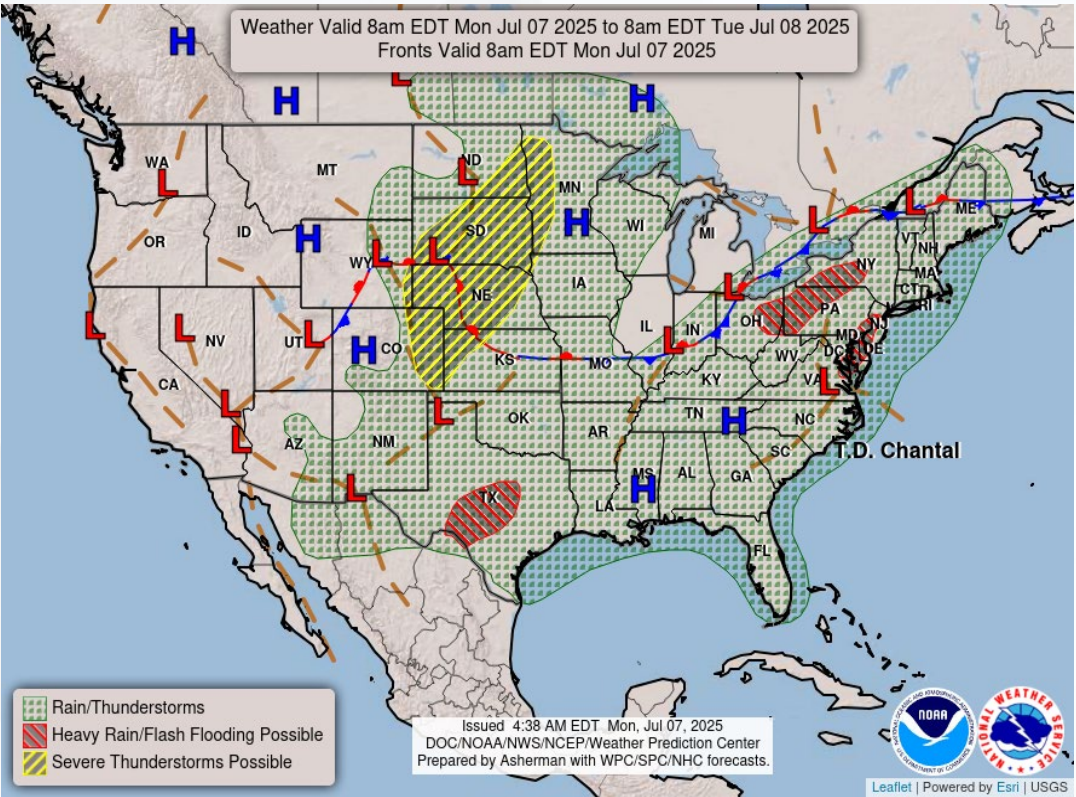
Region 10 Coverage Provided by Recovery Coordinator 8

Status
Normal Operations
In Region / Delayed Response
Deployed / Delayed Response
Out of Service / Unavailable



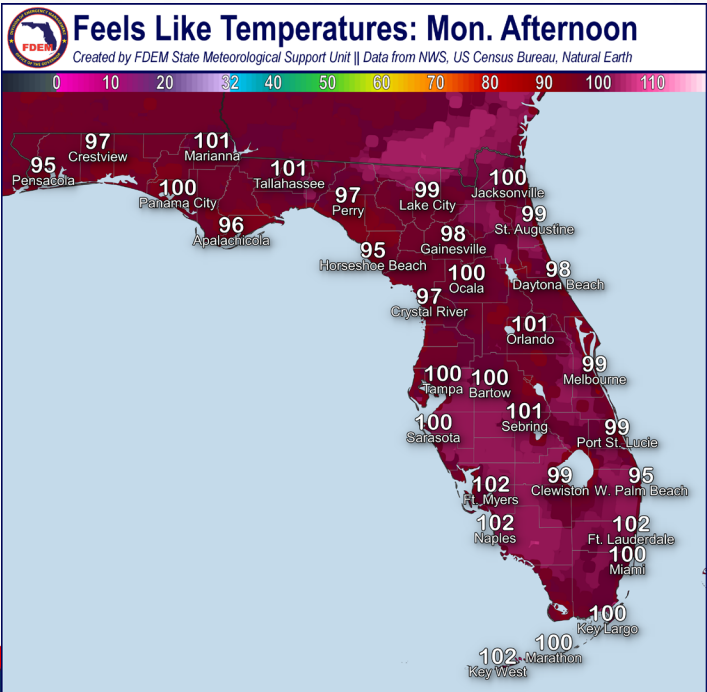
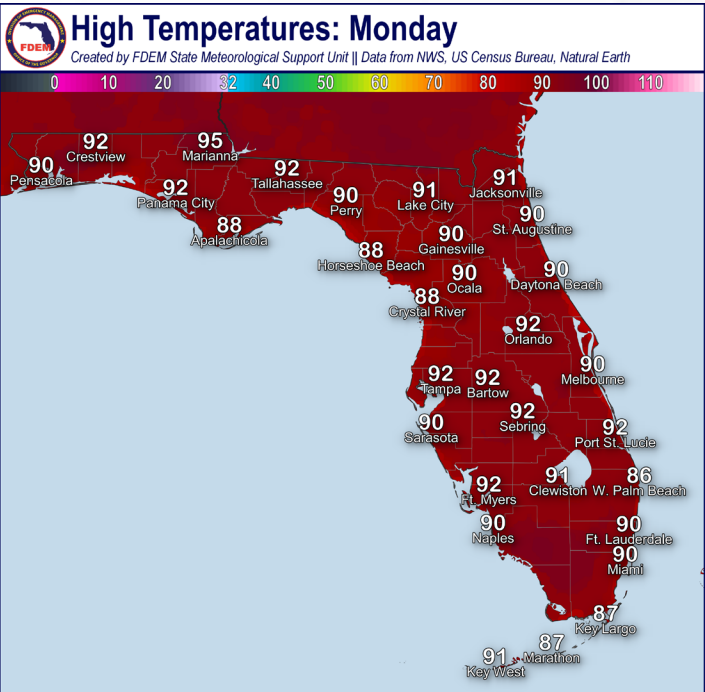


# Meteorology Summary



Today's Weather Map

Treat	R1	R2	R3	R4	R5	R6	R7	R8	R9	R10
Lightning	M	M	H	H	M	M	M	H	M	H
Tornado										
Damaging Wind	L	L	L	L	L	L	L	L	L	L
Hail										
Flash Flooding	L						L	L	L	L
Excessive Heat	L	L	M	M	L	M	M	M	M	M
Wildfire										
Fog (Overnight)		L	L	L						
Rip Currents	M	M	L	L	L	L		L	L	L
Lake Okeechobee Elevation	11.41 ft. (2.09 ft. <u>Below</u> Normal)									
Keetch-Byram Drought Index	148 (+5) on a scale from 0 (very moist) to 800 (very dry)									





# Meteorology Summary

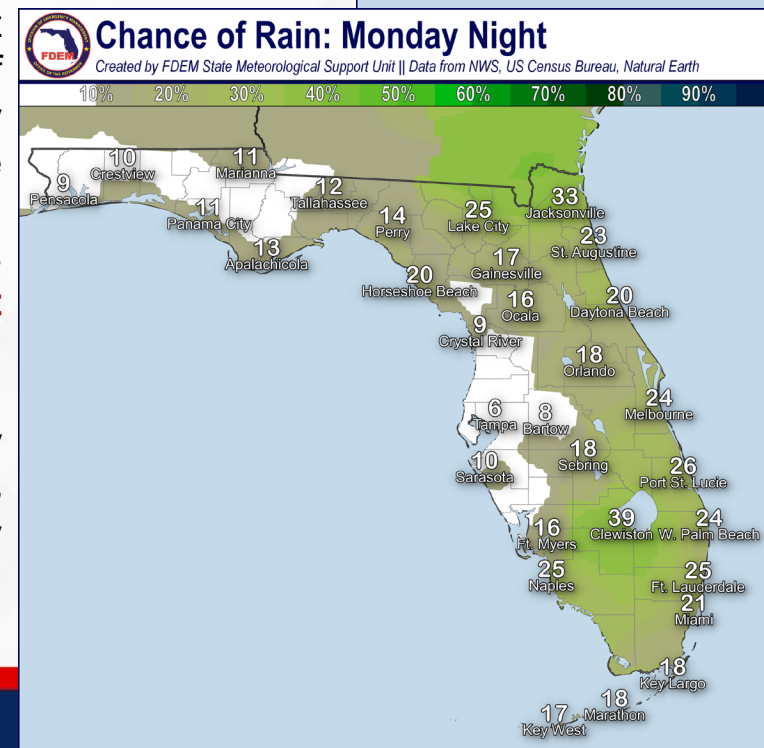
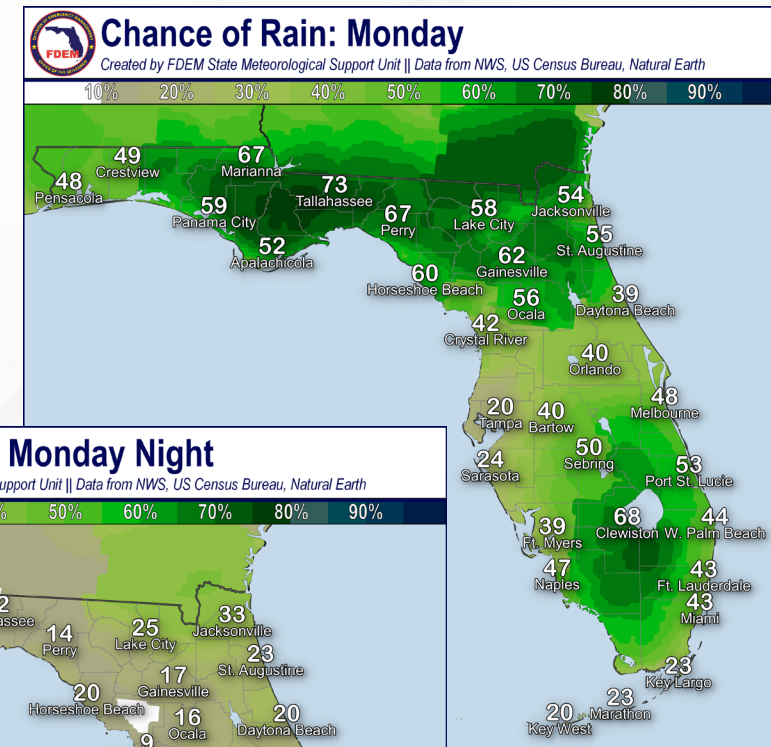
Statewide Overview, Next 24 Hours:

The typical summertime thunderstorm pattern will return across the Sunshine State in the wake of the active and wet pattern last week. Showers and thunderstorms remain along the Panhandle coastline, and they will continue to gradually move inland throughout the day. Scattered to numerous showers and thunderstorms can be expected to develop along the sea breeze later this afternoon and evening, especially across North and South Florida (50-75% chance of rain). The Gulf sea breeze will dominate courtesy of southerly to southwesterly winds, allowing for shower and thunderstorm activity to generally move west to east across the Peninsula. **Embedded locally strong thunderstorms** will be possible, and will be capable of producing frequent lightning, damaging wind gusts (45-60 mph), and heavy downpours. Instances of **localized flash flooding and ponding of water** will be possible with heavy downpours, especially for areas that have seen recently heavy rainfall over the last week.

Seasonably warm and humid conditions can be expected across the state as high temperatures will reach the upper 80s to middle 90s this afternoon and **heat index values** reach the **upper 90s to triple digits (100-105-degrees)**.

Overall shower and thunderstorm activity will continue throughout the evening as they drift towards the coastlines and adjacent coastal waters. Mostly dry conditions can be expected overnight, with lingering showers near the coastlines (15-30% chance of rain). Instances of **patchy fog** cannot be ruled out early Tuesday morning.

Low temperatures will continue to fall into the 70s and lower 80s.



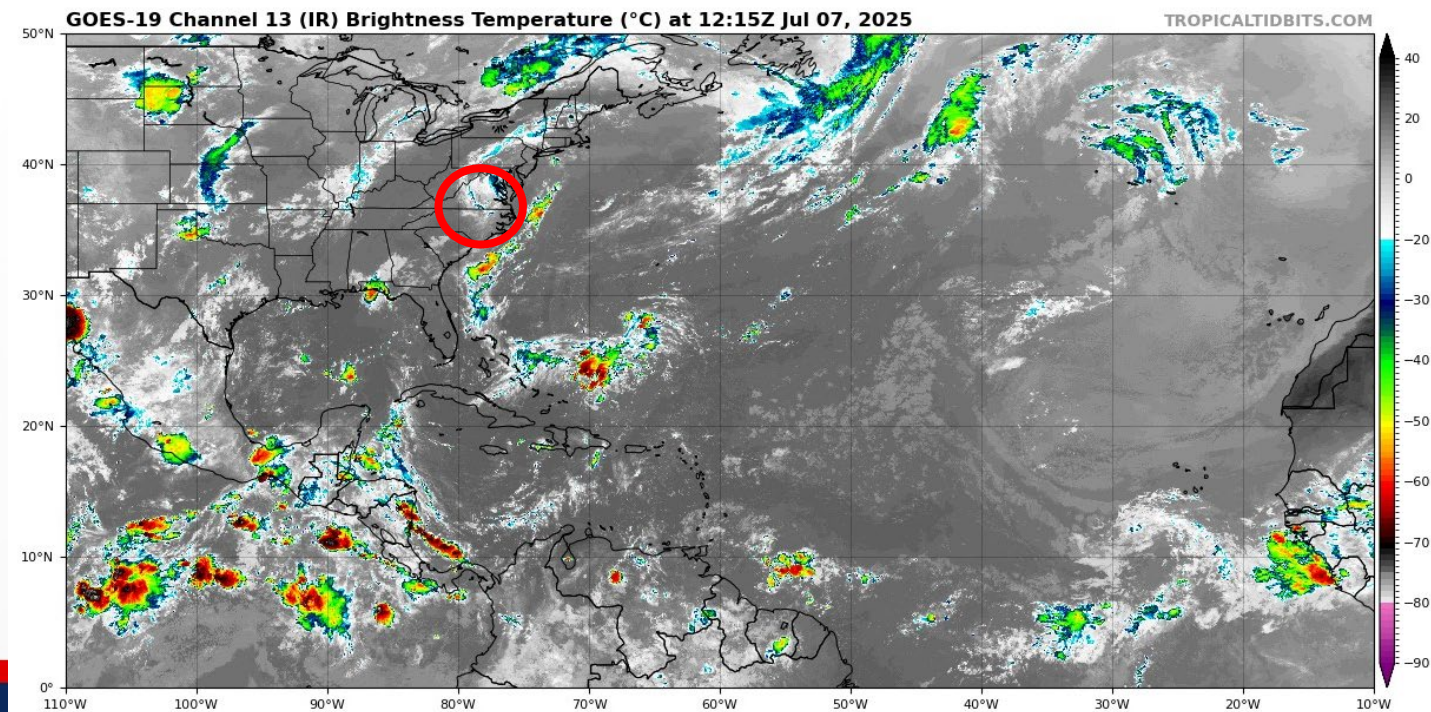
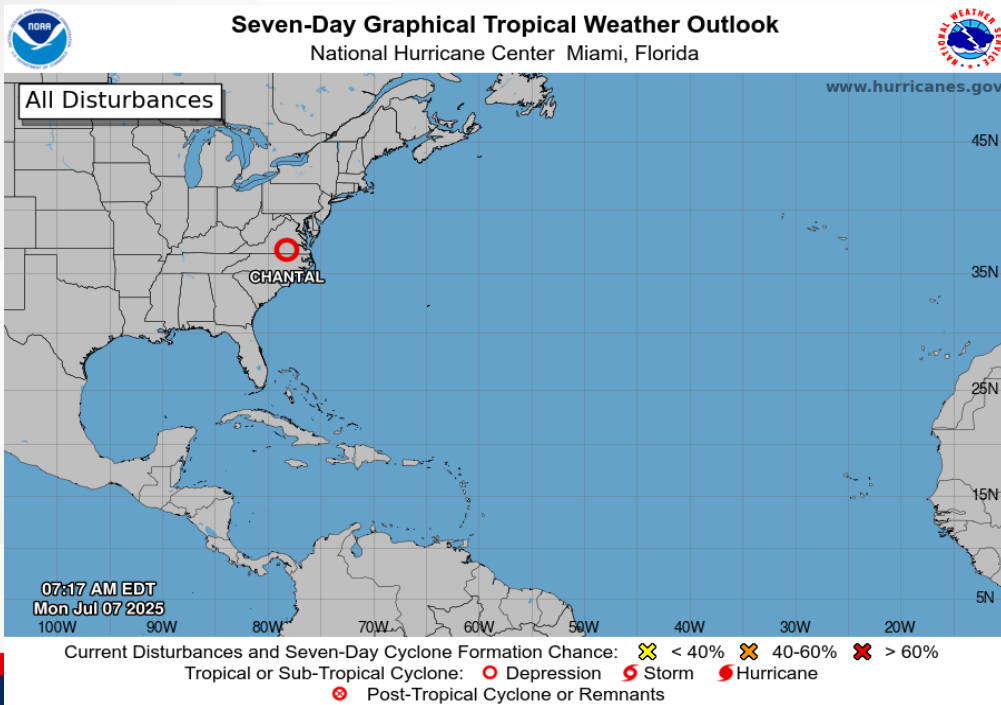




# Tropical Weather

For the latest on the tropics, please visit the National Hurricane Center (NHC) at [www.hurricanes.gov](http://www.hurricanes.gov).

**Tropical Depression Chantal:** As of 8:00 AM EDT, Tropical Depression Chantal was located about 70 miles east-northeast of Danville, Virginia and moving northeastward at 15 mph and this motion should continue. Maximum sustained winds are near 30 mph and little change in strength is forecast. *Chantal poses no threat to Florida.*







# Coastal Hazards & Hydrology

**Rip Currents:** There is a **moderate risk of rip currents** continues along numerous North Florida beaches. A low risk can be expected for Florida Peninsula beaches. For the latest Rip Current Outlook, visit [www.weather.gov/beach](http://www.weather.gov/beach).

**Marine Hazards:** Wave heights of 1-3' can be expected along statewide beaches.

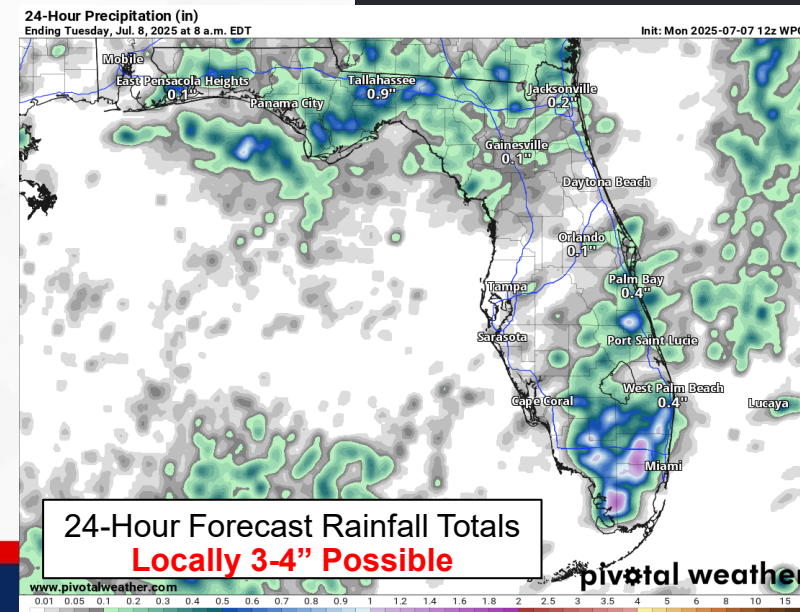
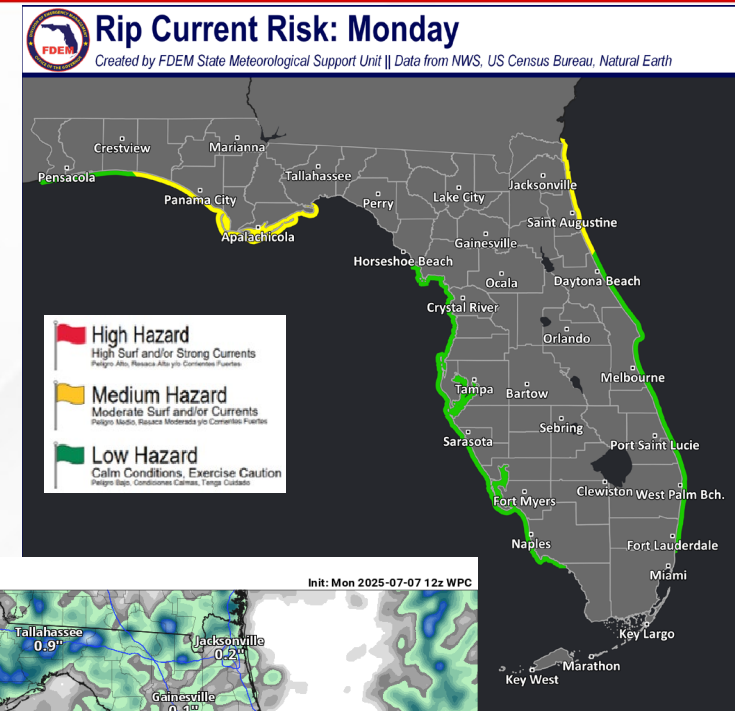
**Red Tide** has been not been observed along any Florida coastline over the past week (valid 6/27).

**Coastal Flooding:** There is no risk for coastal flooding today.

**Flash Flooding:** There is no organized risk for flash flooding today. Typical summertime thunderstorms developing this afternoon and evening will create instances of heavy downpours that could lead to **localized flash flooding and ponding of water**. Areas across the Peninsula could see an earlier onset of possible flooding with the recent heavy rainfall over the last few days. Rainfall totals of 1-2" can be expected, with locally higher totals upwards of 3-4" possible.

**Riverine Flooding:** Multiple rounds of widespread shower and thunderstorm activity will likely result in water level rises along West-Central Florida rivers, creeks, streams, and waterways. The [Myakka River at Myakka River State Park](#) could rise near or into Action Stage (bank-full) in the next couple of days. For more information, visit the [River Forecast Center](#).

**Lake Okeechobee's** average elevation is 11.41 feet, which is within the operational band and is 2.09 feet below normal for this time of year.





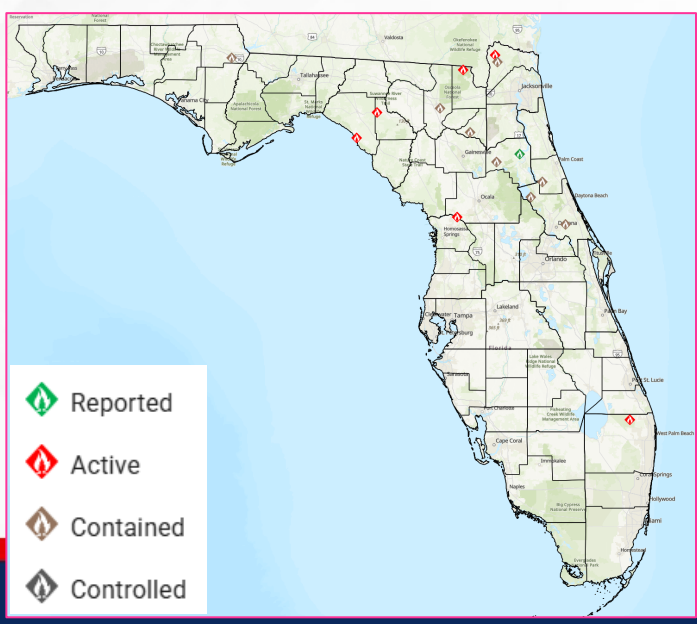
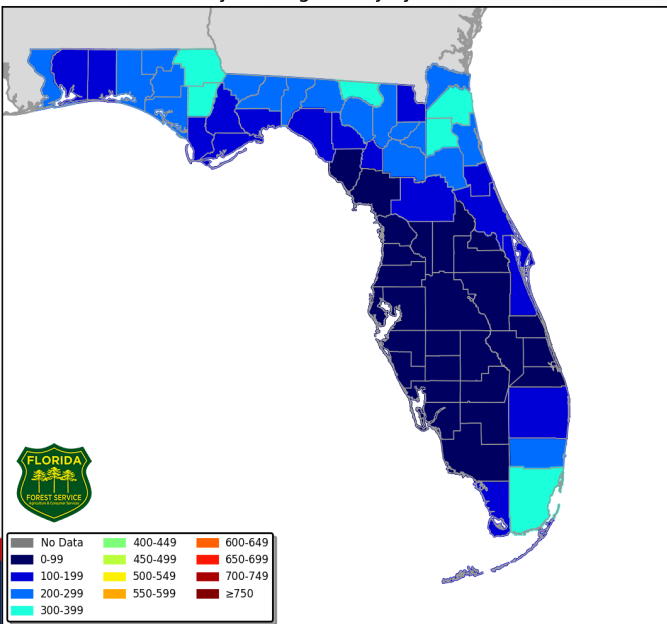
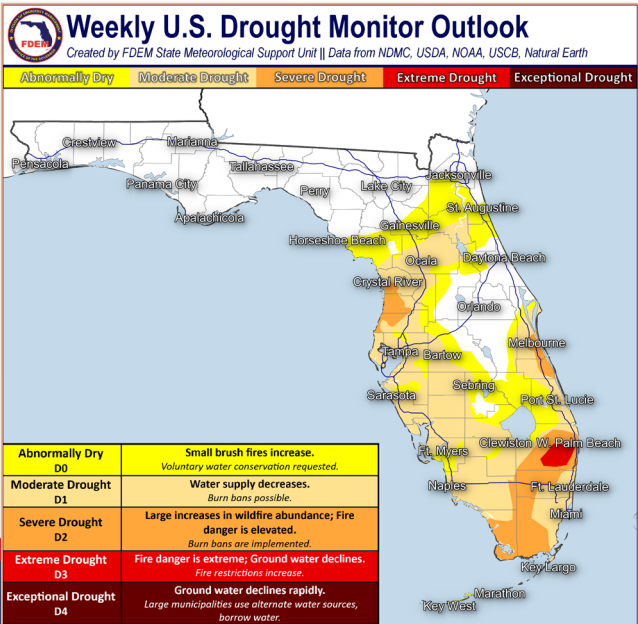
# Drought & Fire Weather

**Fire Weather:** Abundant moisture will help scattered to numerous showers and thunderstorms to develop across the state throughout the daytime hours. Relative humidity values will remain well above critical thresholds, courtesy of a very moist tropical airmass. Thunderstorms will be capable of producing frequent and erratic winds, which could spread new or ongoing wildfires over areas that have missed out on the recent heavier rainfall; however, saturated soils/vegetation will largely limit the wildfire threat statewide. Instances of **locally patchy fog** possible be possible early in the morning. According to the [Florida Forest Service](#), there are 15 active wildfires across the state burning approximately 467 acres.

**Drought:** The active and unsettled weather pattern across Florida continued through the week; however, it is important to note that rainfall that has occurred since Tuesday (7/1) is not included in this Drought Monitor update (7/3). Some improvements were noted to ongoing drought and abnormal dryness occurred across the Florida Peninsula, though areas of **severe drought (level 2 of 4)** and **extreme drought (level 3 of 4)** persisted in some localized pockets where significant long-term deficits in rainfall and streamflow consisted. Widespread heavy rain and thunderstorm activity this week will work to reduce and improve drought conditions statewide on the subsequent Drought Monitor.

The **Keetch-Byram Drought Index** average for Florida is **148 (+5)** on a scale from 0 (very wet) to 800 (very dry). Zero Florida counties have an average KBDI over 500 (drought/increased fire danger).

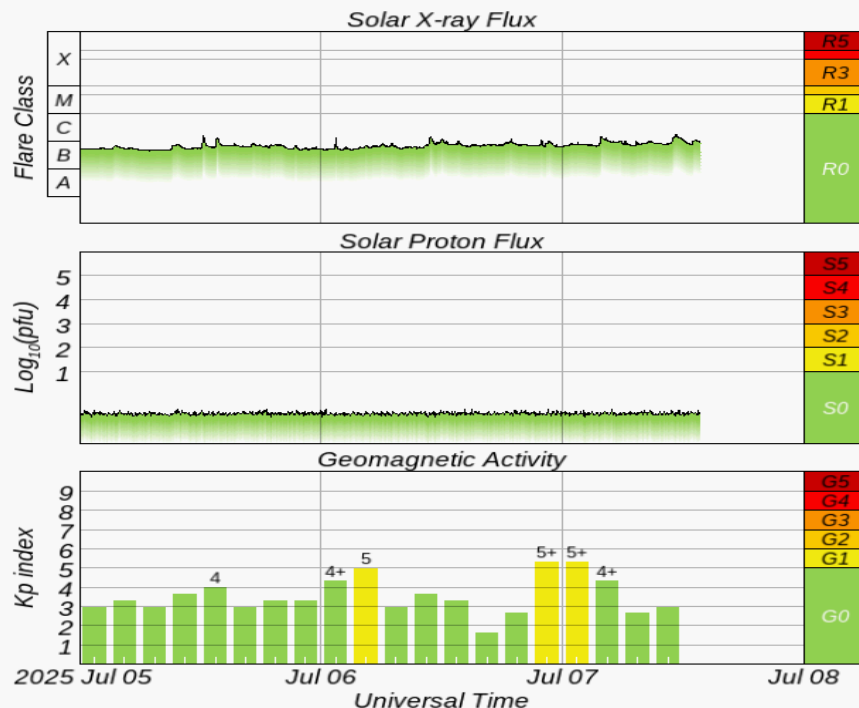
Keetch Byram Drought Index (KBDI)  
County Averages for July 06, 2025





# Current Sunspots

SDO/AIA 193 2025-07-07 12:48:05 UT



Solar Flare Risk	Active Watches & Warnings	Past 24 hours
M-class: 5%	Geomagnetic Storm: None	C1 Solar Flare
X-class: 1%	Radiation Storm: None	No Radio Blackouts

## 48-Hour Geomagnetic Forecast

7/7	7/8
Max Kp= 5 (G1)	Max Kp= 3 (G0)
Chance of minor activity = 5% severe activity = 1%	Chance of minor activity = 5% severe activity = 1%

**Space Weather:** Solar activity will continue at low levels, with a slight chance for strong (M-class) solar flares that could produce minor to moderate (R1-R2) radio blackouts as all current sunspots remain stable. Winds flowing from a coronal hole will create mildly enhanced solar wind conditions through today before returning to nominal conditions midweek. The Earth's geomagnetic field is expected to reach quiet to isolated active periods of minor (G1) geomagnetic conditions through today. By later today and throughout Tuesday, quiet to unsettled conditions can be expected. Mostly quiet conditions return midweek. The overall space threat to Florida is very low.





# SWO Communications Systems & Contact Information

Equipment	Contact	Status	Comments
Phone:	800-320-0519, 850-815-4001, 850-591-0071 (Backup Cell)	Operational	
Backup Landline:	850-487-3234, 850-487-3228	Operational	
Fax:	850-815-4979	Operational	
Email:	<a href="mailto:SWP@em.myflorida.com">SWP@em.myflorida.com</a>	Operational	
SWO Tracker:	<a href="https://apps.floridadisaster.org/SWO/">https://apps.floridadisaster.org/SWO/</a>	Operational	
SLERS:	DEM Statewide	Operational	
FNARS:	WGY974	Operational	
Federal NAWAS:	State Watch Office	Operational	
EMnet Message:	FL.000- State Watch Office	Operational	
EMnet Voice:	FL SWP- State Watch Office	Operational	
IPAWS:	LP.1 Stations via Emnet	Operational	
FIN:	SOFEOC	Operational	
Satellite Phones:	MSAT 888-890-5178 or Iridium 480-263-8838	Operational	
Website:	<a href="http://www.floridadisaster.org">http://www.floridadisaster.org</a>	Operational	

Users wishing to subscribe (approval pending) to this distribution list, register at:

[https://public.govdelivery.com/accounts/FLDEM/subscriber/new?topic\\_id=Morning\\_SITREP](https://public.govdelivery.com/accounts/FLDEM/subscriber/new?topic_id=Morning_SITREP)