



Florida Division of Emergency Management State Watch Office

Morning Situation Report

Thursday, July 3, 2025



State Emergency Operations Center Activation Level

Level 2 Activation



SERT On-Call Personnel

Position	Personnel	Phone	Email
Operations Chief	Amy Godsey	(850) 519-8483	Amy.Godsey@em.myflorida.com
Watch Officer	Sam Walters	(850) 519-8638	Sam.Walters@em.myflorida.com
Duty Officer	Jay Griffin	(850) 524-4094	Kellen.Griffin-Jay@em.myflorida.com
Operations Officer- Day	Lauren Warfield	(850) 815-4001	SWP@em.myflorida.com
Operations Officer- Swing	Zachary Remante	(850) 815-4001	SWP@em.myflorida.com
Operations Officer- Night	Jim Lawhon	(850) 815-4001	SWP@em.myflorida.com
Meteorologist	Caitlyn Gillespie	(850) 688-2119	Caitlyn.Gillespie@em.myflorida.com
Plans Chief	Kaylynn Perry	(850) 254-5657	Plans_Command@em.myflorida.com
Logistics Chief	Christina Goetzman	(850) 519-8581	Christina.Goetzman@em.myflorida.com
Human Services Director	Pam Hughes	(850) 528-5638	Pamela.Hughes@em.myflorida.com
Emergency Services	Tim Kenyon	(850) 591-7732	Tim.Kenyon@em.myflorida.com
Infrastructure Branch Director	Christina Goetzman	(850) 519-8581	Christina.Goetzman@em.myflorida.com
ESF 8 On-Call	Brandon Gore	(866) 786-4673	DLDOHDutyOfficers@flhealth.gov
Public Information Officer	Stephanie Hartman	(850) 570-3053	Stephanie.Hartman@em.myflorida.com
DEM Finance and Admin	Jeremy Smith	(850) 273-1273	Jeremy.Smith@em.myflorida.com



Response Regional Coordination Team



Team	County Location	Visits
Region 1: Jim Roberts	In Region	State Holiday (On-Call Status)
Region 2: Enrique Gaston	In Region	State Holiday (On-Call Status)
Region 3: Glen Hammers	In Region	State Holiday (On-Call Status)
Region 4: Tara Kostich	In Region, Clay	State Holiday (On-Call Status) / County EM Meeting
Region 5: Austin Beeghly	In Region, Seminole	State Holiday (On-Call Status) / EM Event
Region 6: Paul Siddall	In Region	State Holiday (On-Call Status)
Region 7: Kathryn Hollenbeck	In Region	State Holiday (On-Call Status)
Region 8: Mason Kozac	In Region	State Holiday (On-Call Status)
Region 9: Vacant	N/A	N/A
Region 10: Claudia Baker	In Region	State Holiday

Region 9 Coverage Provided by Recovery Coordinator 9
Region 10 Coverage Provided by Response Coordinator 8

Status
Normal Operations
Out of Service / Unavailable



Recovery Regional Coordination Team

Team	County Location	Status / Activities
Region 1: Allison Blevins	In Region	Off & Monitoring
Region 2: Justin Lazzara	In Region	Off & Monitoring
Region 3: Vacant	N/A	See Coverage
Region 4: Joshua Saunders	In Region	Off & Monitoring
Region 5: Elizabeth Caison	In Region	Off & Monitoring
Vacant	N/A	See Coverage
Region 6: Vacant		
Region 7: Antonio Zapata	In Region	Off & Monitoring
Region 8: Ja-Pheth Butler-Miller	In Region	Off & Monitoring
Region 9: Jacob Ginsberg	In Region	On-Call Coverage for R9
Region 10: Vacant	N/A	See Coverage

Region 3 Coverage Provided by Recovery Coordinator 2 & 4

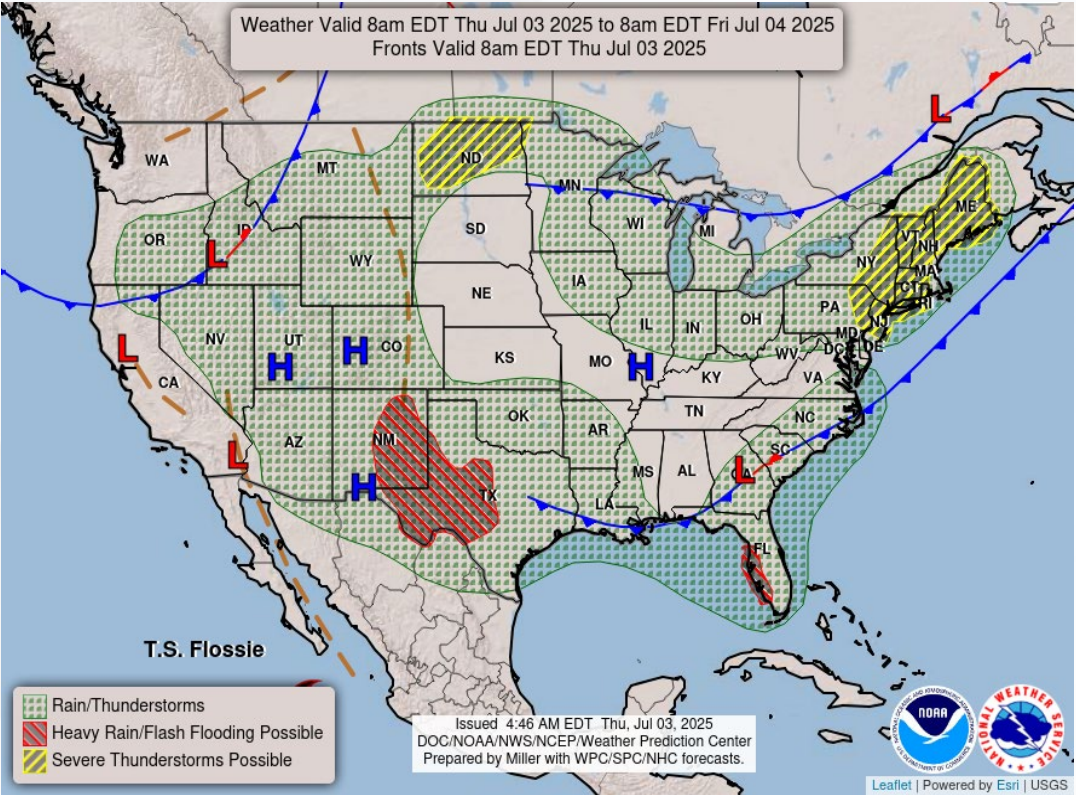
Region 6 Coverage Provided by Recovery Coordinator 5

Region 10 Coverage Provided by Recovery Coordinator 8

Status
Normal Operations
In Region / Delayed Response
Deployed / Delayed Response
Out of Service / Unavailable

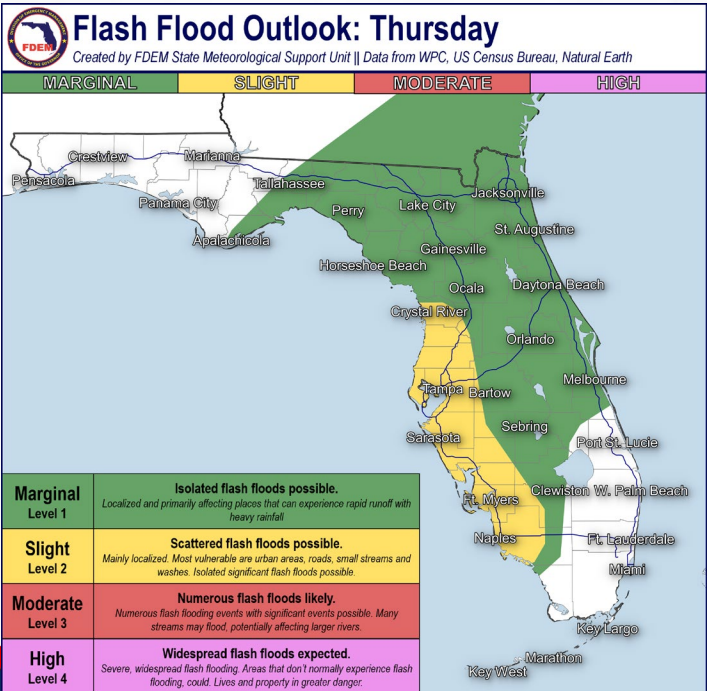
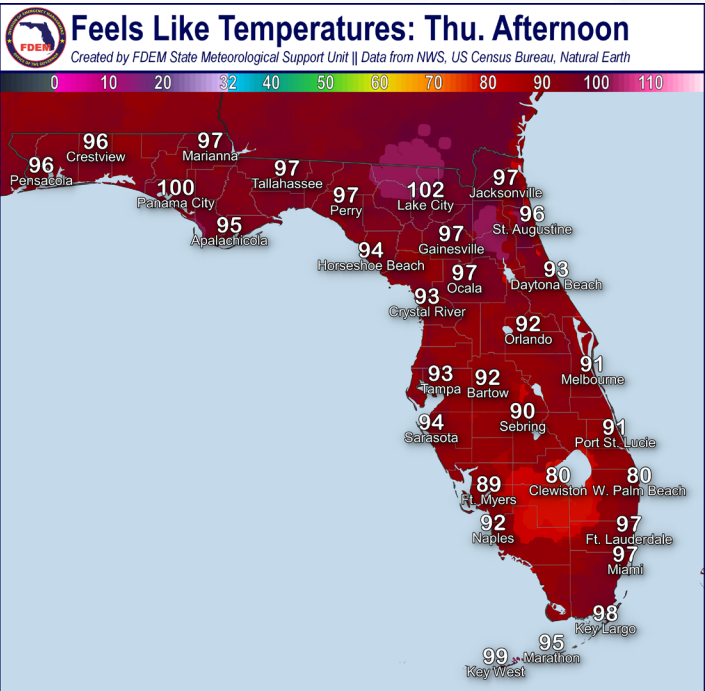


Meteorology Summary



Today's Weather Map

Threat	R1	R2	R3	R4	R5	R6	R7	R8	R9	R10
Lightning	L	M	M	H	H	H	H	H	H	M
Tornado										
Damaging Wind	L	L	L	L	L	L	L	L	L	L
Hail										
Flash Flooding		L	L	L	L	M	L	L	M	L
Excessive Heat	M	M	M	M	L	L	L	L	L	L
Wildfire										
Fog (Overnight)		L	L	L						
Rip Currents	M	H	L	M	M	M		M	L	L
Lake Okeechobee Elevation	11.24 ft. (2.20 ft. <u>Below Normal</u>)									
Keetch-Byram Drought Index	188 (-8) on a scale from 0 (very moist) to 800 (very dry)									





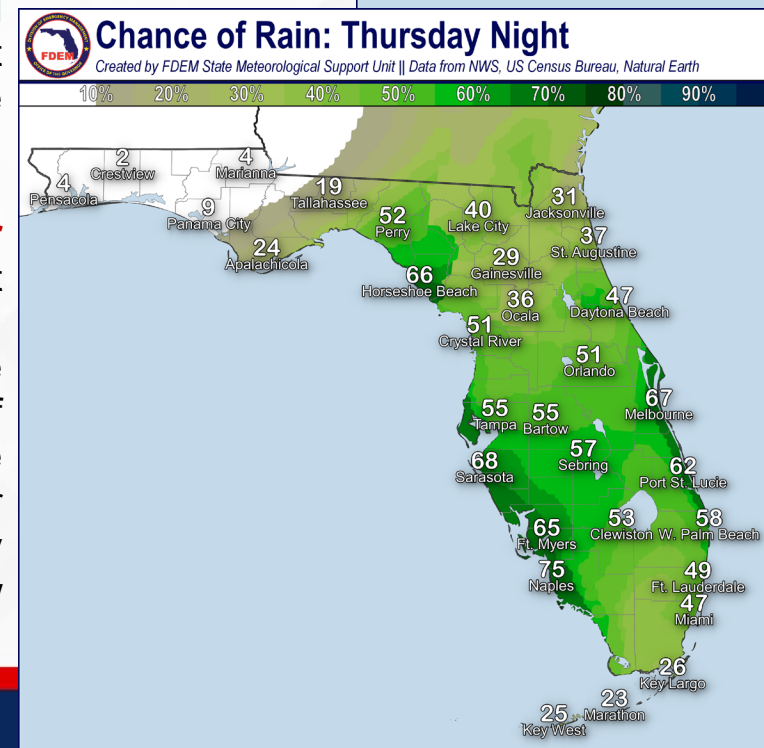
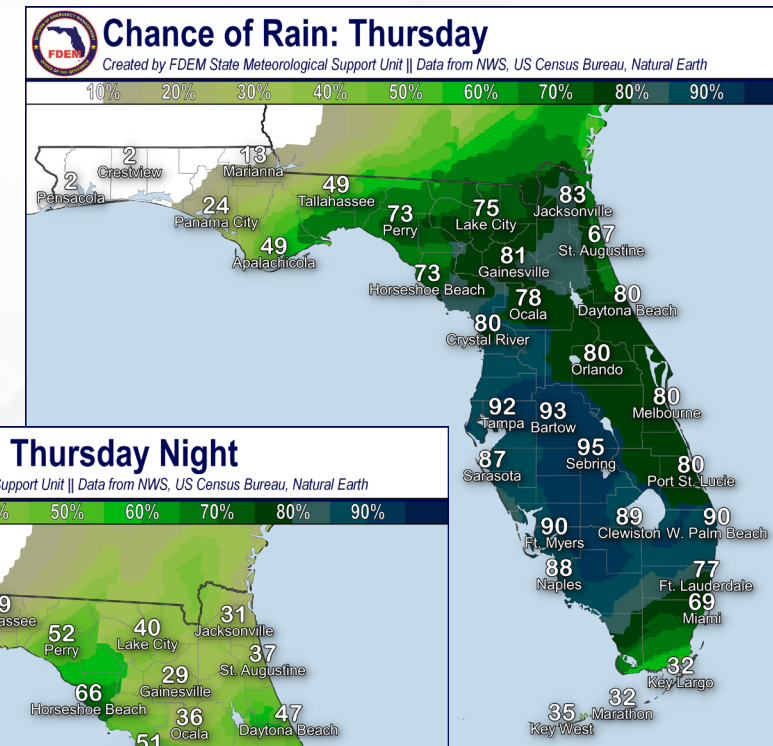
Meteorology Summary

Statewide Overview, Next 24 Hours:

The ongoing wet and active weather pattern can be expected to continue across the Sunshine State today, courtesy of an approaching frontal boundary. Rain chances today shift southeastward to the Florida Peninsula, with widespread showers and thunderstorms expected (75-near 100% chance of rain). As typical with Florida's summertime weather pattern, thunderstorm activity will maximize in intensity and coverage during the later afternoon and evening hours (3:00 PM-9:00 PM EDT). While there is no organized risk for severe weather, a few thunderstorms could become **locally strong** this afternoon and capable of producing gusty winds (40-50 mph), very frequent lightning, and torrential downpours. Intense rainfall rates will bring the greater forecast concern today, with instances of **flash flooding and ponding water** possible – especially for urban, low-lying/poor drainage locations that have already seen multiple rounds of heavy rain and thunderstorm activity in the recent days.

With the increase in cloud cover and rain chances high temperatures will remain in the upper 80s to lower 90s. **Heat index values** will remain in the **middle to upper 90s** throughout the state, with portions of the Suwannee River Valley and Northeast Florida reaching **triple digits (100-103-degrees)** before widespread rainfall.

Most of the shower and thunderstorm activity will dissipate throughout the overnight hours; however, rain chances will remain elevated tonight across portions of the Florida Peninsula and West Florida coastline (55-70% chance of rain). These showers and thunderstorms may drift inland overnight but will largely set the stage for another active weather day Friday. Instances of **patchy fog** may be possible early Friday morning given the lingering low-level moisture and calm winds. Low temperatures remain in the 70s and 80s statewide.



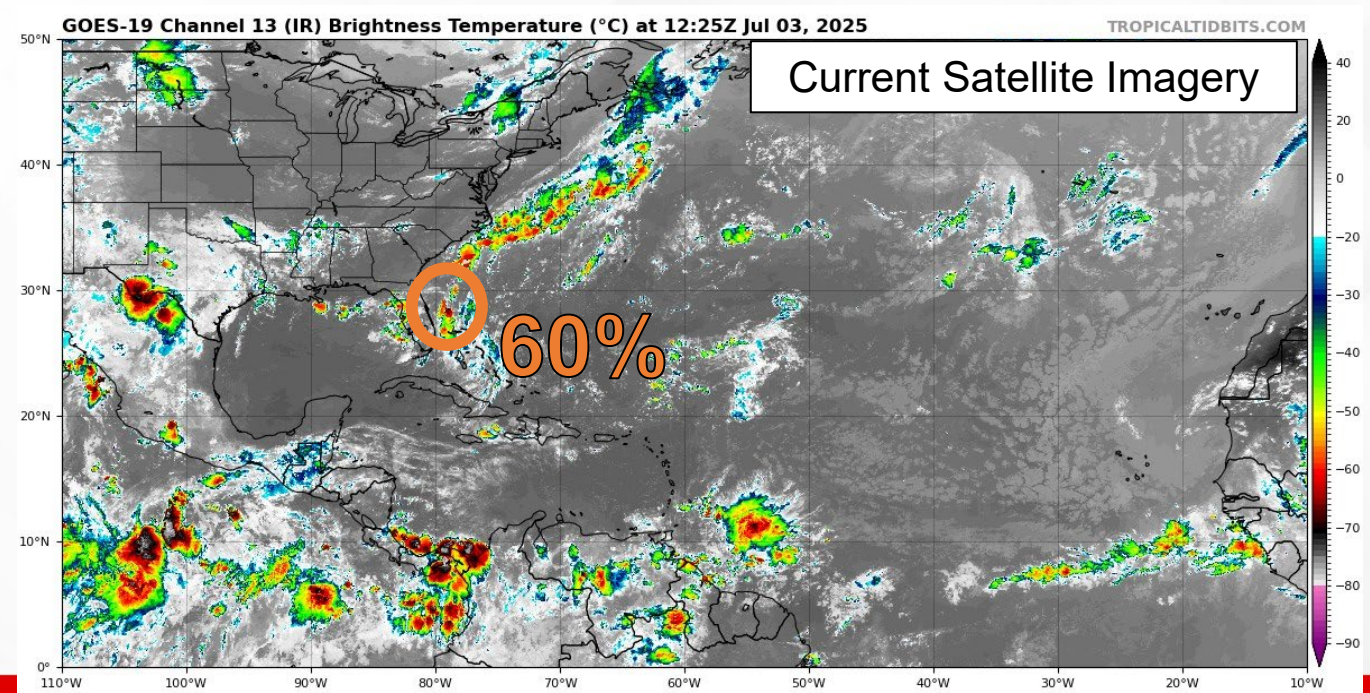
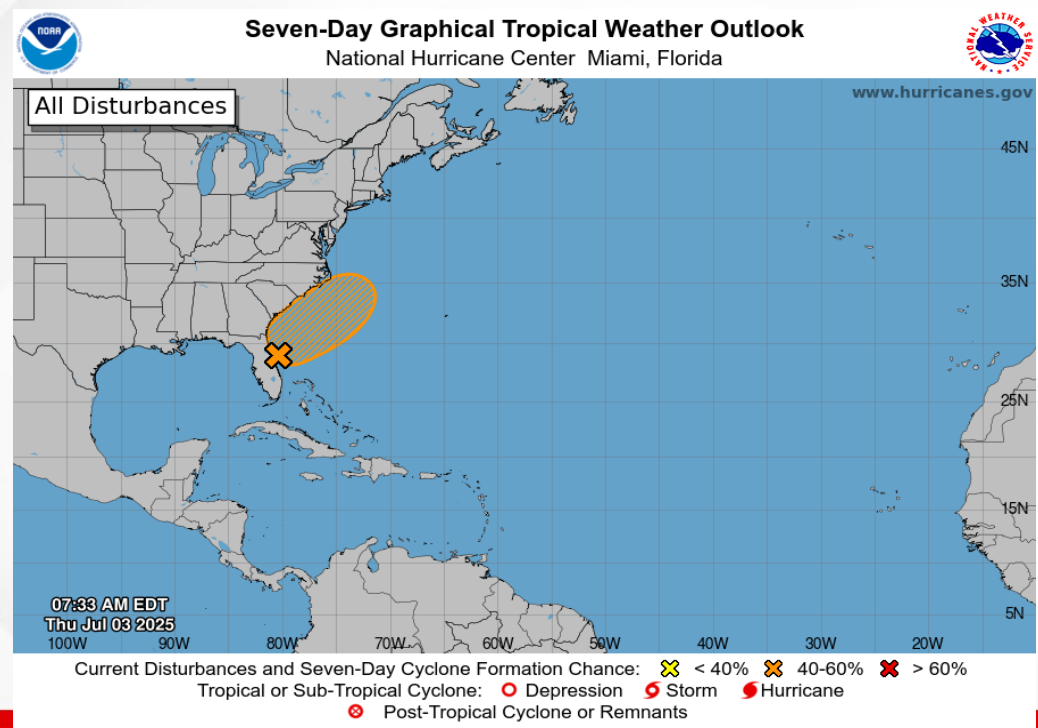


Tropical Weather

For the latest on the tropics, please visit the National Hurricane Center (NHC) at www.hurricanes.gov.

Near the Southeastern U.S.: An area of low pressure is forecast to develop along a weakening frontal boundary near Florida or the Atlantic Coast of the Southeastern U.S. by Saturday. Environmental conditions appear only marginally conducive for some slow development, but a tropical or subtropical depression could form in this region over the weekend or early next week while the system drifts northward or northeastward. ***Regardless of development, an increase in shower and thunderstorm activity can be expected along Northeast Florida and the Florida Peninsula during the next 5 days. An increase in flooding potential can be expected along the Florida West Coast and for several urban, low-lying/poor drainage areas through the weekend.***

- *Formation chance through 48 hours...**low...20%.**
- *Formation chance through 7 days...**medium...60%.**





Coastal Hazards & Hydrology

Rip Currents: Onshore flow will create a **moderate risk for rip currents** across numerous beaches throughout the state, with a **locally high risk** along Gulf County. For the latest Rip Current Outlook, visit www.weather.gov/beach.

Marine Hazards: Wave heights of 1-3' can be expected along statewide beaches.

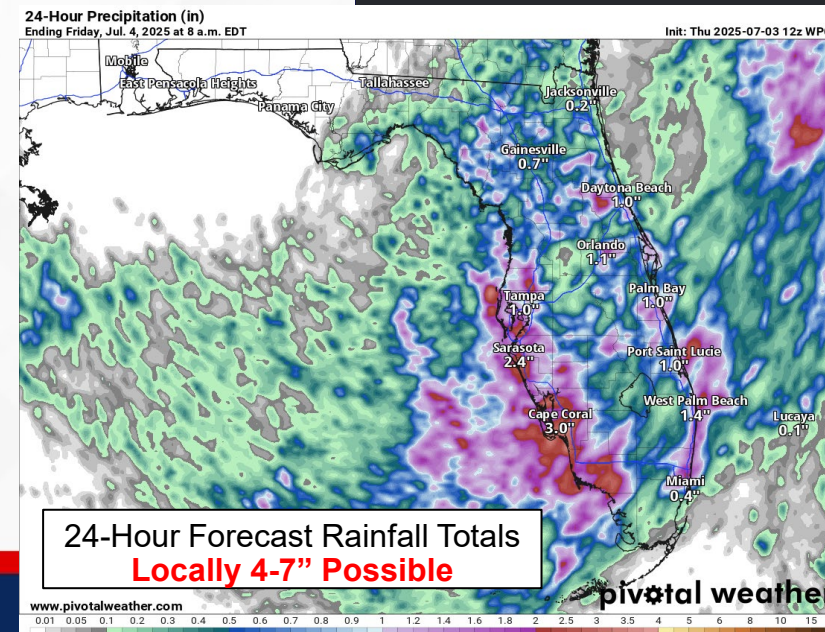
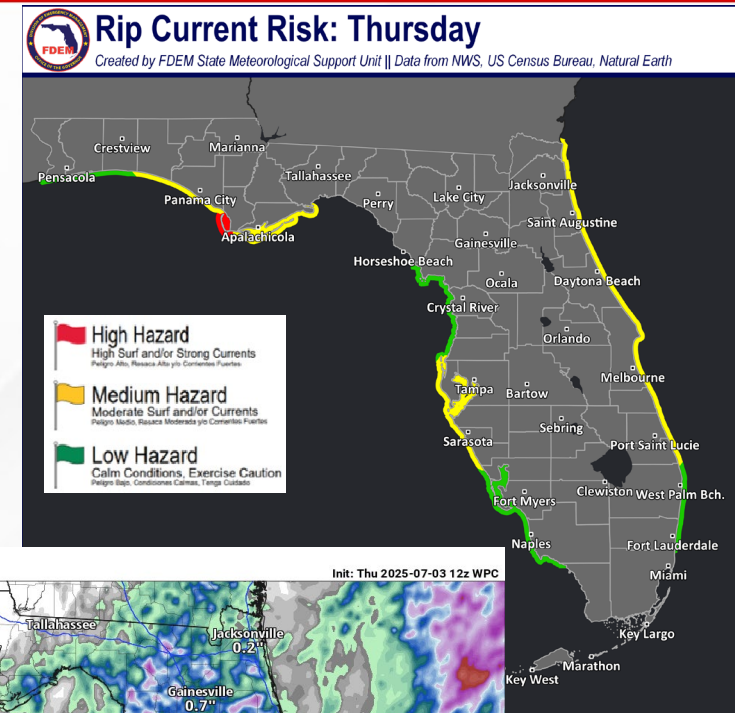
Red Tide has been not been observed along any Florida coastline over the past week (valid 6/27).

Coastal Flooding: There is no risk for coastal flooding today.

Flash Flooding: There is a **Marginal Risk (level 1 of 4) for Flash Flooding** throughout much of the Sunshine State today, with a **Slight Risk (level 2 of 4)** along the Florida West Coast. Abundant moisture will pool ahead of an approaching frontal boundary moving into the Southeast U.S. which will help maximize shower and thunderstorm activity. Intense rainfall rates and torrential downpours will be possible, and could lead to instances of **flash flooding and ponding of water**. Some of these areas have already seen locally heavy rainfall, which may lead to an **earlier onset of flooding** with additional rounds of shower and thunderstorm activity. Rainfall totals of 1-3" will be possible throughout the state (away from the western and central Florida Panhandle), with **locally higher totals** upwards of 4-7" possible along the Florida West Coast, as well as portions of Central Florida.

Riverine Flooding: Recent rounds of heavy rainfall have resulted in a riverine response along a few Florida Panhandle basins, with the Shoal River, Bruce Creek, and the Sopchoppy River all in Action Stage (*bank-full*). With the heavier forecast rainfall totals shifting southeastward, water levels will be able to gradually recede. Multiple rounds of widespread shower and thunderstorm activity will likely result in water level rises along West-Central Florida rivers, creeks, streams, and waterways. While most basin are expected to reach Action Stage, the [Little Manatee River at Wimauma \(US-301\)](#) may rise into **minor flood stage** early next week; however, the riverine response will be heavily tied to where the heaviest rainfall totals occur. For more information, visit the [River Forecast Center](#).

[Lake Okeechobee's](#) average elevation is 11.24 feet, which is within the operational band and is 2.20 feet below normal for this time of year.





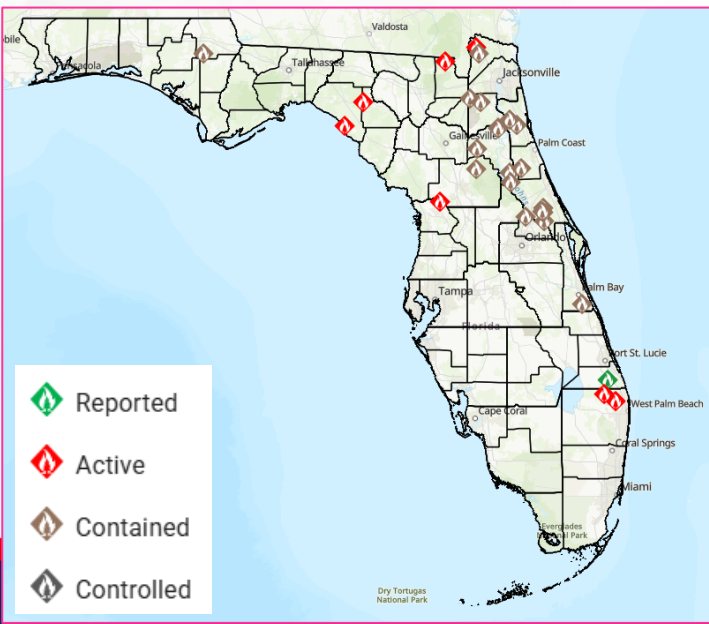
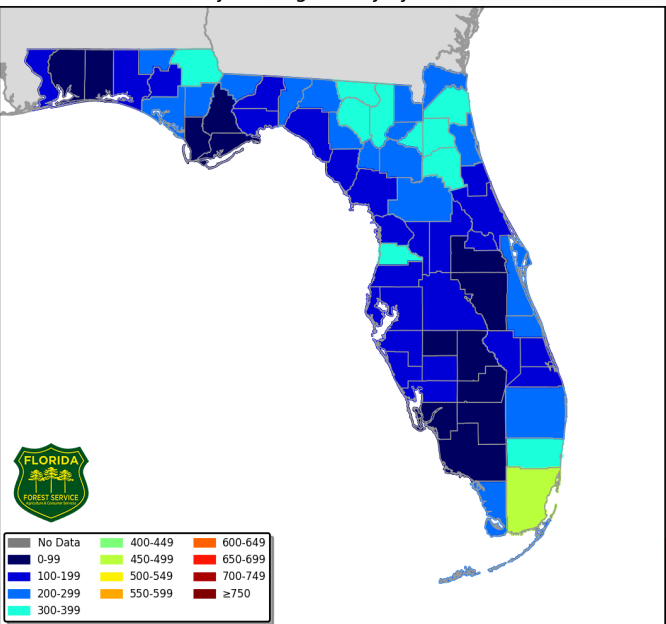
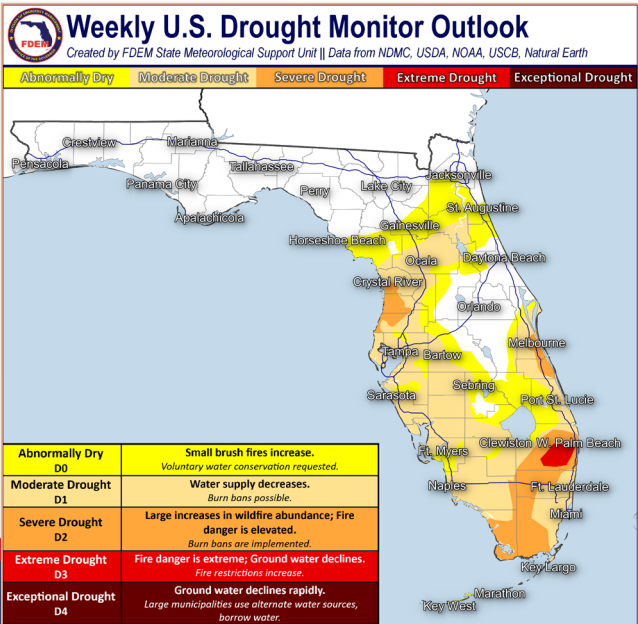
Drought & Fire Weather

Fire Weather: Abundant moisture will help scattered to numerous showers and thunderstorms to develop across the state throughout the daytime hours. Relative humidity values will remain well above critical thresholds, courtesy of a very moist tropical airmass. Thunderstorms will be capable of producing frequent and erratic winds, which could spread new or ongoing wildfires over areas that have missed out on the recent heavier rainfall; however, saturated soils/vegetation will largely limit the wildfire threat statewide. Instances of **locally patchy fog** possible be possible early in the morning. According to the [Florida Forest Service](#), there are 27 active wildfires across the state burning approximately 550 acres.

Drought: The active and unsettled weather pattern across Florida continued through the week; however, it is important to note that rainfall that has occurred since Tuesday (7/1) is not included in this Drought Monitor update (7/3). Some improvements were noted to ongoing drought and abnormal dryness occurred across the Florida Peninsula, though areas of **severe drought (level 2 of 4)** and **extreme drought (level 3 of 4)** persisted in some localized pockets where significant long-term deficits in rainfall and streamflow consisted. Widespread heavy rain and thunderstorm activity this week will work to reduce and improve drought conditions statewide on the subsequent Drought Monitor.

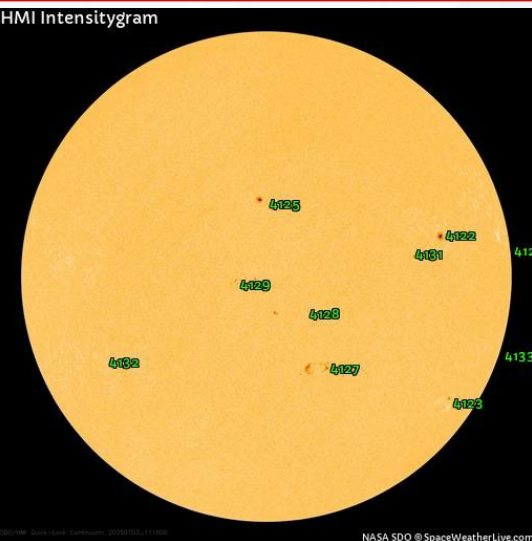
The **Keetch-Byram Drought Index** average for Florida is **188 (-0)** on a scale from 0 (very wet) to 800 (very dry). Zero Florida counties have an average KBDI over 500 (drought/increased fire danger).

Keetch Byram Drought Index (KBDI)
County Averages for July 02, 2025

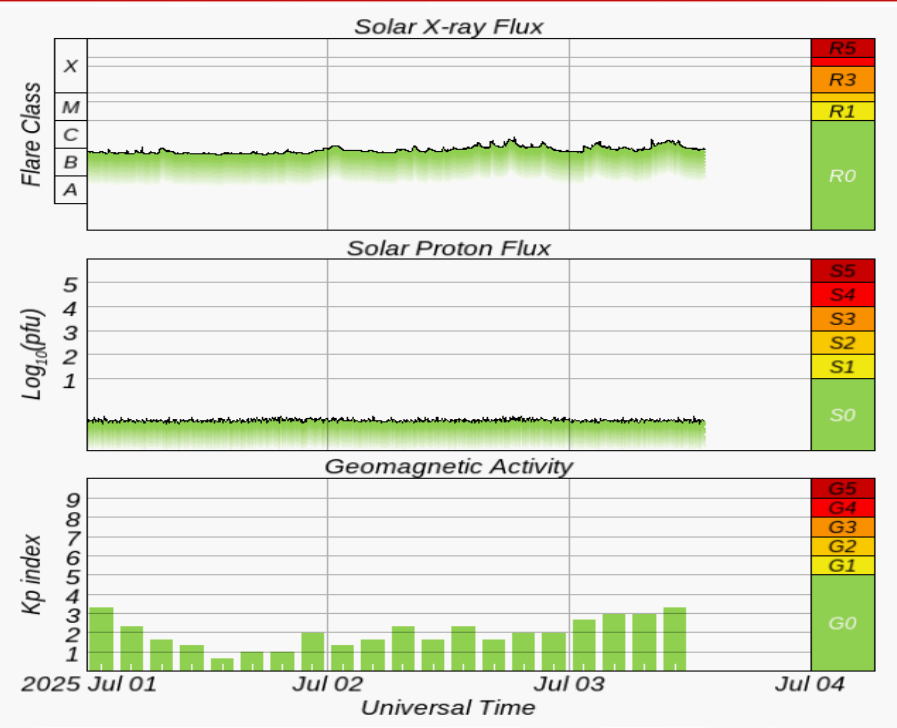
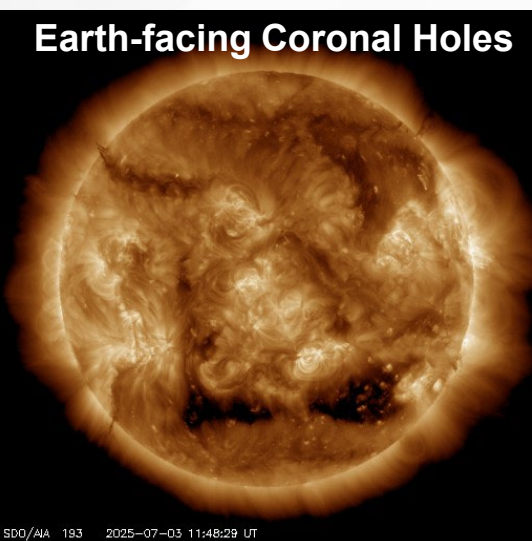




Space Weather



Current Sunspots



Solar Flare Risk	Active Watches & Warnings	Past 24 hours
M-class: 15%	Geomagnetic Storm: G1 Watch – 7/3	C2 Solar Flare
X-class: 1%	Radiation Storm: None	No Radio Blackouts

48-Hour Geomagnetic Forecast	
7/3	7/4
Max Kp= 5 (G1)	Max Kp= 4 (G0)
Chance of minor activity = 25% severe activity = 5%	Chance of minor activity = 15% severe activity = 1%

Space Weather: A slight chance for R1-R2 (minor to moderate) radio blackouts continues due to isolated strong (M-class) solar flare activity; however, all sunspots are currently trending toward stability. Enhancements in the solar wind regime can be expected today with the arrival of a Coronal Mass Ejection (CME) that left the Sun on 6/28. Organized minor (G1) geomagnetic storms are likely for the next 24 hours due to the aforementioned CME impacts, with geomagnetic conditions gradually subsiding to unsettled and active by the end of the week. The overall space weather threat to Florida remains very low.



SWO Communications Systems & Contact Information

Equipment	Contact	Status	Comments
Phone:	800-320-0519, 850-815-4001, 850-591-0071 (Backup Cell)	Operational	
Backup Landline:	850-487-3234, 850-487-3228	Operational	
Fax:	850-815-4979	Operational	
Email:	SWP@em.myflorida.com	Operational	
SWO Tracker:	https://apps.floridadisaster.org/SWO/	Operational	
SLERS:	DEM Statewide	Operational	
FNARS:	WGY974	Operational	
Federal NAWAS:	State Watch Office	Operational	
EMnet Message:	FL.000- State Watch Office	Operational	
EMnet Voice:	FL SWP- State Watch Office	Operational	
IPAWS:	LP.1 Stations via Emnet	Operational	
FIN:	SOFEOC	Operational	
Satellite Phones:	MSAT 888-890-5178 or Iridium 480-263-8838	Operational	
Website:	http://www.floridadisaster.org	Operational	

Users wishing to subscribe (approval pending) to this distribution list, register at:

https://public.govdelivery.com/accounts/FLDEM/subscriber/new?topic_id=Morning_SITREP