



Florida Division of Emergency Management State Watch Office

Morning Situation Report

Tuesday, June 17, 2025



State Emergency Operations Center Activation Level

Level 2 Activation



SERT On-Call Personnel

Position	Personnel	Phone	Email
Operations Chief	Amy Godsey	(850) 519-8483	Amy.Godsey@em.myflorida.com
Watch Officer	Sam Walters	(850) 519-8638	Sam.Walters@em.myflorida.com
Duty Officer	Jeremy Whitt	(850) 755-8521	Jeremy.Whitt@em.myflorida.com
Operations Officer- Day	Caleb Pitts	(850) 815-4001	SWP@em.myflorida.com
Operations Officer- Swing	Kaya Dungey	(850) 815-4001	SWP@em.myflorida.com
Operations Officer- Night	Matthew Peloso	(850) 815-4001	SWP@em.myflorida.com
Meteorologist	Kennedy Tartt	(850) 567-6368	Kennedy.Tartt@em.myflorida.com
Plans Chief	Kaylynn Perry	(850) 254-5657	Plans_Command@em.myflorida.com
Logistics Chief	Christina Goetzman	(850) 519-8581	Christina.Goetzman@em.myflorida.com
Human Services Director	Pam Hughes	(850) 528-5638	Pamela.Hughes@em.myflorida.com
Emergency Services	Tim Kenyon	(850) 591-7732	Tim.Kenyon@em.myflorida.com
Infrastructure Branch Director	Christina Goetzman	(850) 519-8581	Christina.Goetzman@em.myflorida.com
ESF 8 On-Call	Hunter Stafford	(866) 786-4673	DLDOHDutyOfficers@flhealth.gov
Public Information Officer	Stephanie Hartman	(850) 570-3053	Stephanie.Hartman@em.myflorida.com
DEM Finance and Admin	Jeremy Smith	(850) 273-1273	Jeremy.Smith@em.myflorida.com



Response Regional Coordination Team



Team	County Location	Visits
Region 1: Jim Roberts	Mobile, Al	NWS Tropical Workshop
Region 2: Enrique Gaston	Franklin	Office Admin/County EM Visit
Region 3: Glen Hammers	Columbia	Office Admin/County EM Visit
Region 4: Tara Kostich	Clay	Regional Meeting
Region 5: Austin Beeghly	Seminole/Orange	Executive Support/FIFA Club Cup Match
Region 6: Paul Siddall	Hillsborough	EM Planning Meeting
Region 7: Kathryn Hollenbeck	Highlands	SERT EM Meeting/Pediatric Task Force Meeting
Region 8: Mason Kozac	Out of Service	Leave (See Coverage)
Region 9: Vacant	N/A	N/A
Region 10: Claudia Baker	Dade	Hurricane Exercise

Region 8 Coverage Provided by Response Coordinator 7
Region 9 Coverage Provided by Response Coordinator 6

Status

Normal Operations

Out of Service / Unavailable



Recovery Regional Coordination Team

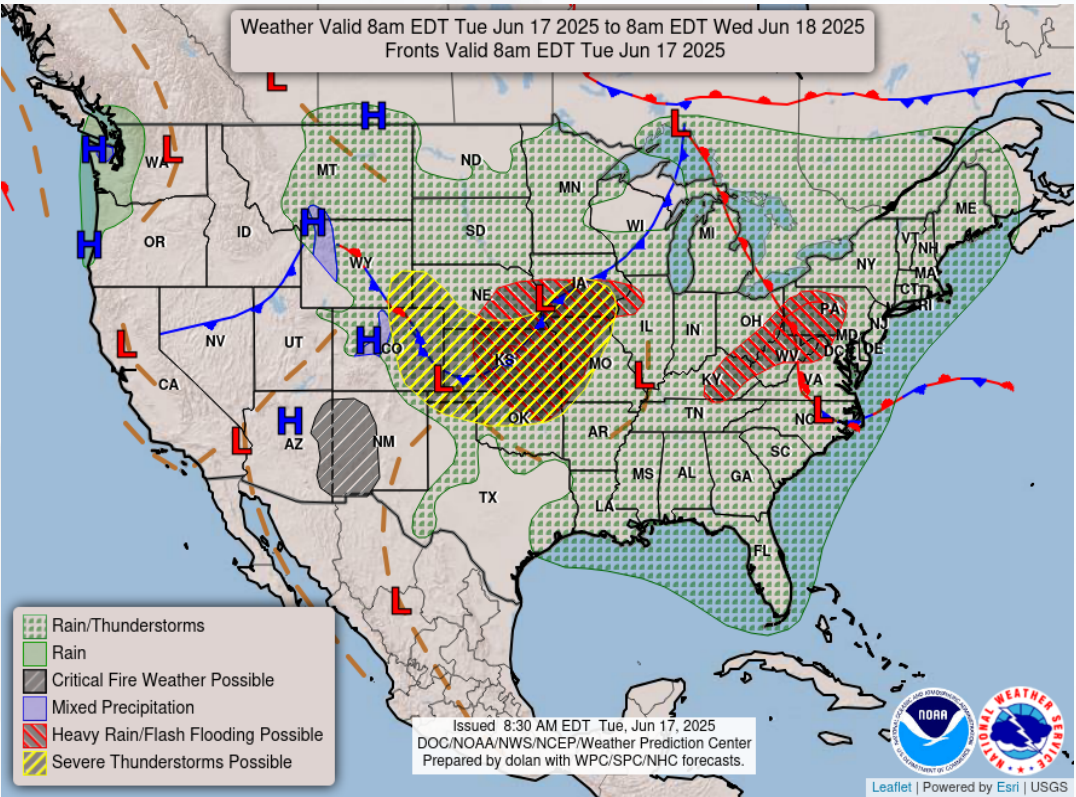
Team	County Location	Status / Activities
Region 1: Allison Blevins	Okaloosa	External Partners Meeting
Region 2: Justin Lazzara	Leave	See Coverage
Region 3: Vacant	N/A	See Coverage
Region 4: Joshua Saunders	Clay	Regional Quarterly Meeting
Region 5: Elizabeth Caison	Leave	See Coverage
Vacant	N/A	See Coverage
Region 6: Vacant		
Region 7: Antonio Zapata	Hardee	County EM Meeting
Region 8: Ja-Pheth Butler-Miller	Indian River	FL Course Prep.
Region 9: Jacob Ginsberg	Sarasota	Vehicle Maintenance
Region 10: Vacant	N/A	See Coverage

Region 2 Coverage Provided by Recovery Coordinator 4
Region 3 Coverage Provided by Recovery Coordinator 4
Region 5 Coverage Provided by Recovery Coordinator 4
Region 6 Coverage Provided by Recovery Coordinator 7
Region 10 Coverage Provided by Recovery Coordinator 8

Status
Normal Operations
In Region / Delayed Response
Deployed / Delayed Response
Out of Service / Unavailable

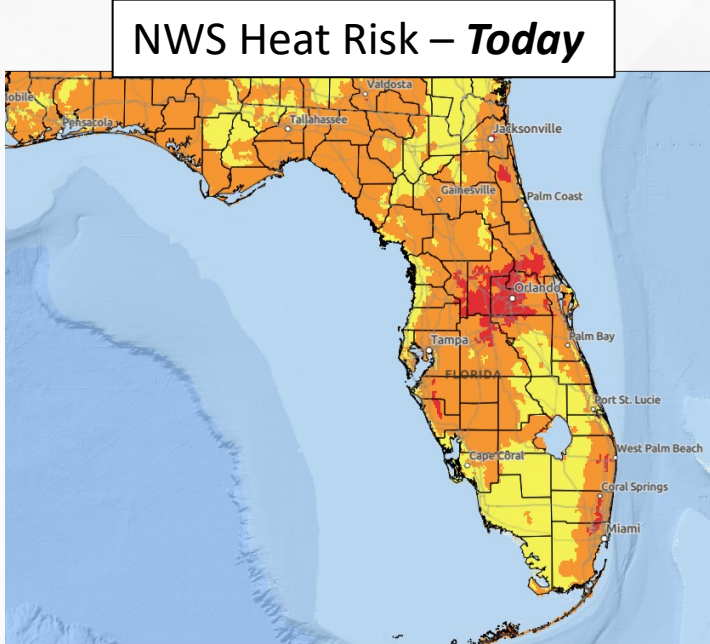
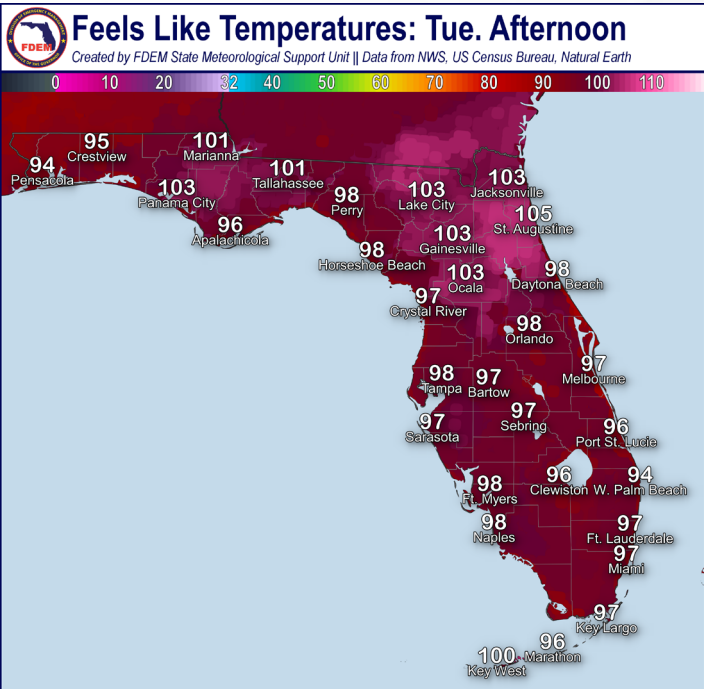


Meteorology Summary



Today's Weather Map

T threat	R1	R2	R3	R4	R5	R6	R7	R8	R9	R10
Lightning	H	M	L	M	L	M	M	L	M	L
Tornado										
Damaging Wind										
Hail										
Flash Flooding	L									
Excessive Heat	L	M	M	M	M	M	L	L	L	L
Wildfire										
Fog (Overnight)										
Rip Currents	M	M	L	M	M	L		M	L	M
Lake Okeechobee Elevation	11.17 ft. (2.01 ft. <u>Below</u> Normal)									
Keetch-Byram Drought Index	277 (-12) on a scale from 0 (very moist) to 800 (very dry)									





Meteorology Summary

Statewide Overview, Next 24 Hours:

Little change in the overall weather pattern can be expected across the state; however, rain chances remain lower than they have the last few days. Showers and embedded thunderstorms along the Gulf Coast continue along the coastlines and will gradually move inland throughout the morning hours. Additional isolated to scattered showers can be expected to develop throughout the day, especially during the afternoon and evening hours, as the sea breeze moves inland (20-55% chance of rain). Throughout the Peninsula, slightly drier conditions will slim down rain chances, especially along the East Coast; however, isolated to scattered showers and thunderstorms along the sea breeze boundaries can still be anticipated (25-60% chance of rain). The greatest coverage across the Peninsula will be along the western and interior regions where the Gulf and Atlantic sea breeze boundaries collide with one another. **Any thunderstorm** will be capable of producing frequent lightning, gusty winds and torrential downpours that lead to **nuisance flooding or ponding of water**.

Warm and muggy conditions continue throughout the state with high temperatures reaching the upper 80s to middle 90s. **Feels-like temperatures** will also reach the **upper 90s to triple digits (100-105-degrees)**, keeping below heat advisory criteria. However, urban corridor across East-Central and Southeast Florida are within the **Moderate Heat Risk**, and therefore should take extra precaution regarding heat safety.

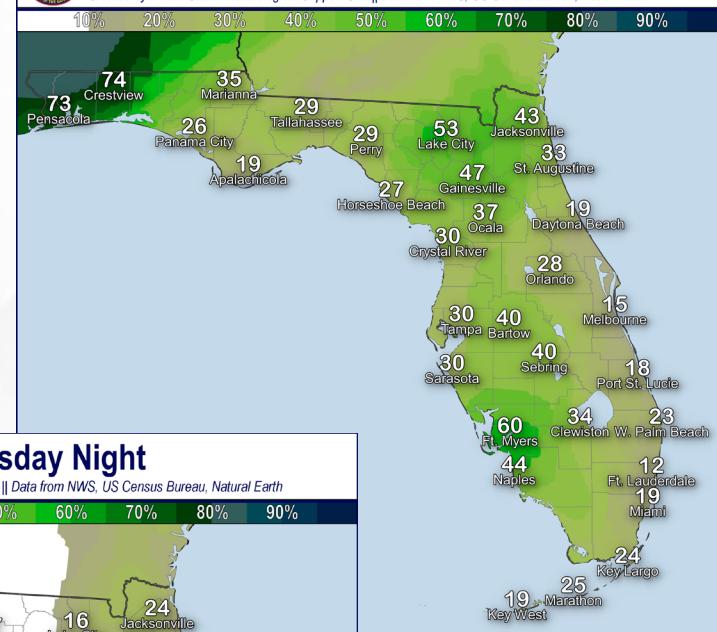
Shower and thunderstorm activity during the evening will gradually dissipate or move offshore with the sea breeze. A few showers or embedded thunderstorms may linger throughout the overnight hours along portions of the Gulf and West Coast (15-40% chance of rain). Instances of locally **patchy fog** will be possible early Tuesday morning throughout North Florida.

Low temperatures will remain in the 70s throughout the state and lower 80s for the Keys.



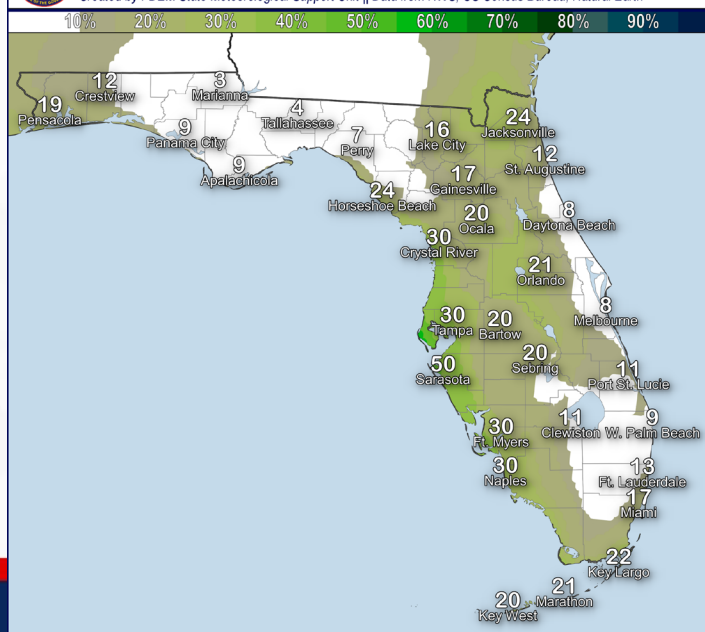
Chance of Rain: Tuesday

Created by FDEM State Meteorological Support Unit || Data from NWS, US Census Bureau, Natural Earth



Chance of Rain: Tuesday Night

Created by FDEM State Meteorological Support Unit || Data from NWS, US Census Bureau, Natural Earth

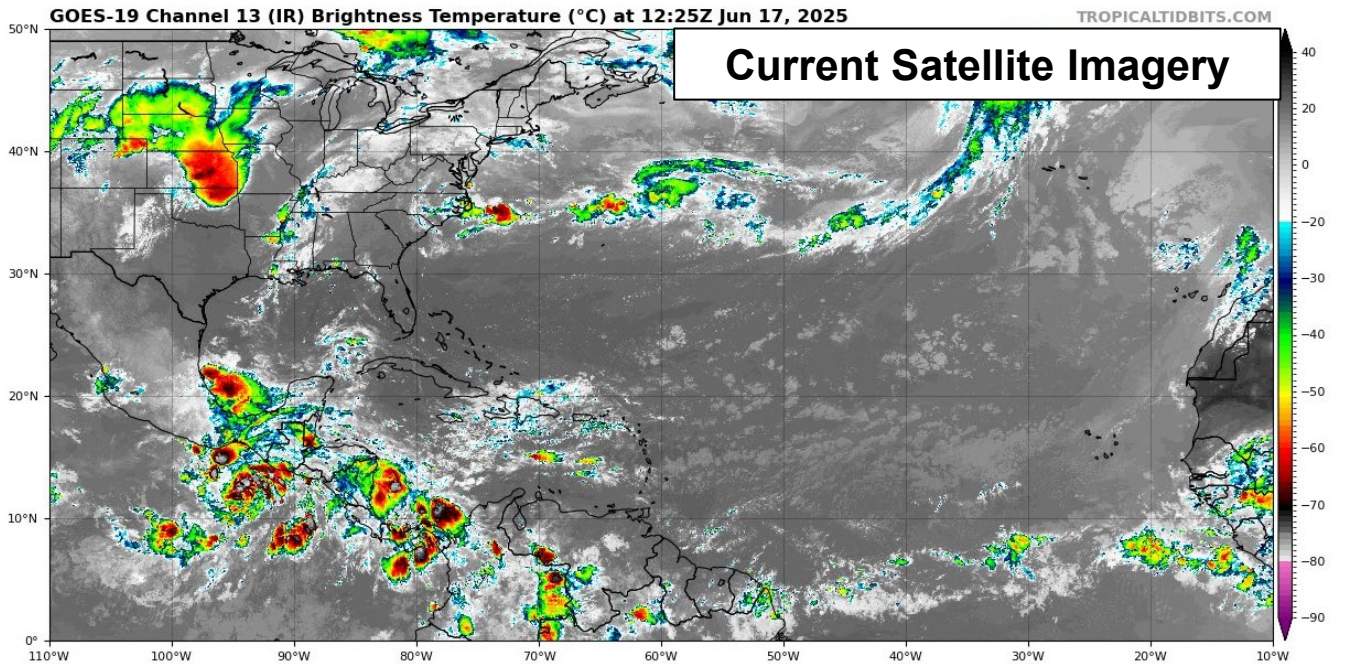
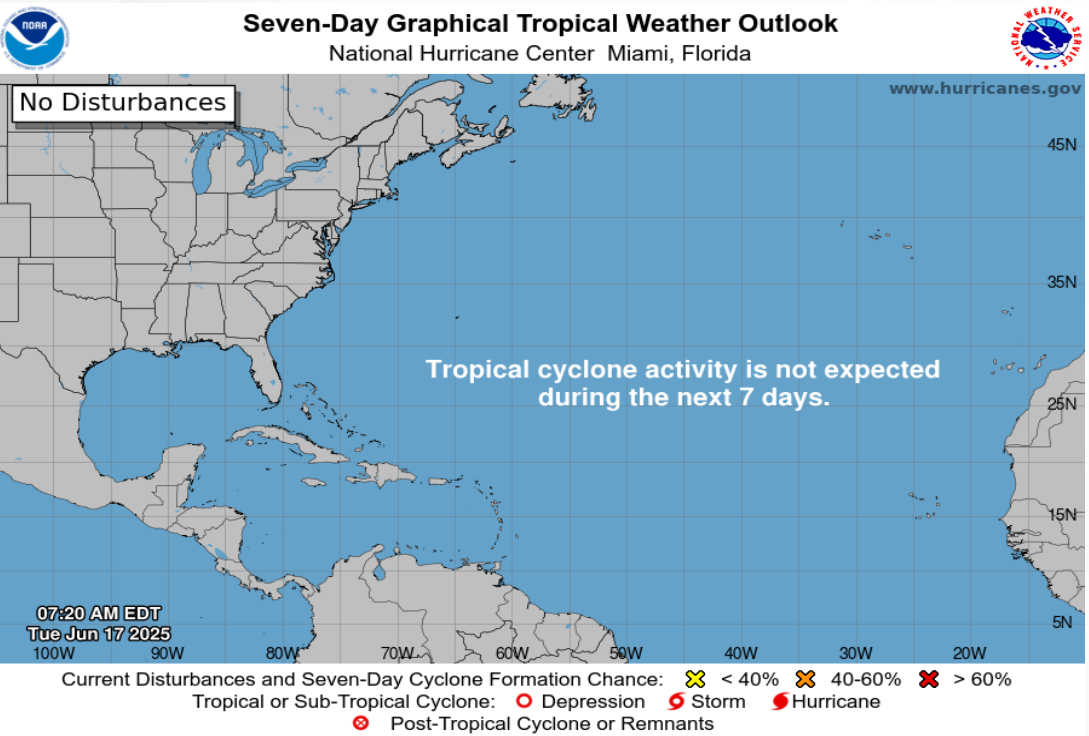




Tropical Weather

For the latest on the tropics, please visit the National Hurricane Center (NHC) at www.hurricanes.gov.

Tropical development is not expected over the next 7 days across the Atlantic basin.





Coastal Hazards & Hydrology

Rip Currents: A **moderate risk for rip currents** persists along Florida Panhandle and East Coast beaches. Low rip currents conditions will continue for the Florida West Coast. For the latest Rip Current Outlook, visit www.weather.gov/beach.

Marine Hazards: Wave heights of 1-2' can be expected along all Florida Gulf Coast beaches today. Longer-period onshore flow will result in 2-3' waves for the Atlantic Coast.

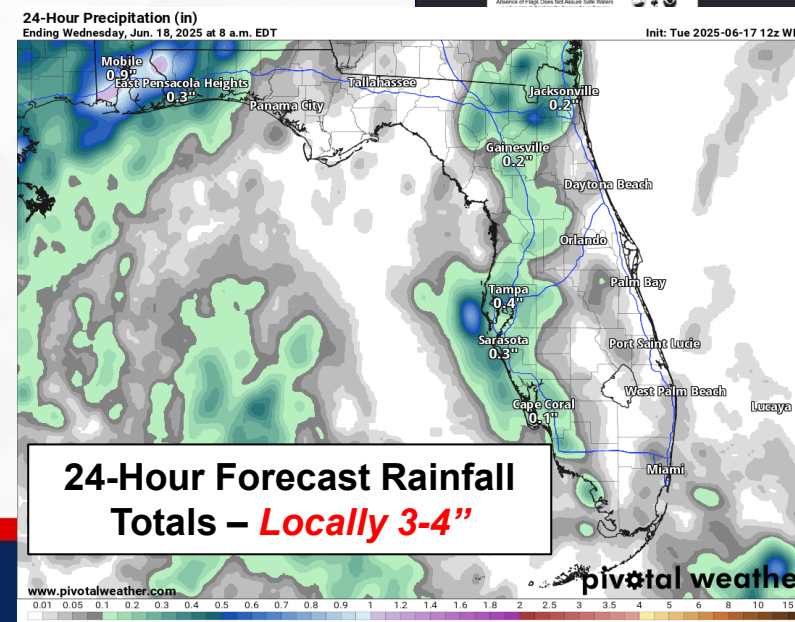
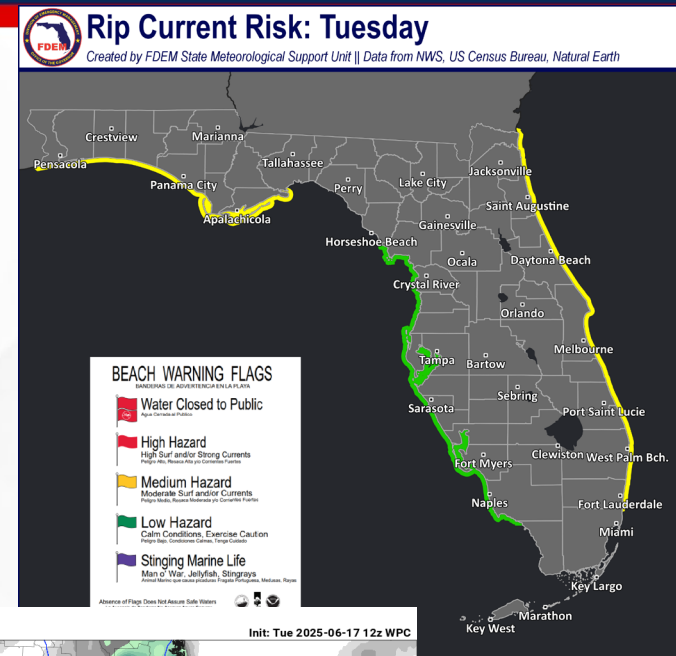
Red Tide has been not been observed along any Florida coastline over the past week (valid 6/6).

Coastal Flooding: There is no risk for coastal flooding today.

Flash Flooding: Nuisance flooding and ponding of water will be possible with any heavier downpours embedded within shower and thunderstorm activity across the state. Slow-moving thunderstorms will also be capable of producing locally heavier downpours over areas, which could lead to earlier onset of ponding of water or flash flooding for urban and low-lying/poor drainage areas. Rainfall totals of 1-2" can be anticipated, with locally higher totals upwards of 3-4" possible.

Riverine Flooding: There are no riverine concerns across the state. For more information, visit the River Forecast Center.

Lake Okeechobee's average elevation is 11.17 feet, which is within the operational band and is 2.01 feet below normal for this time of year.





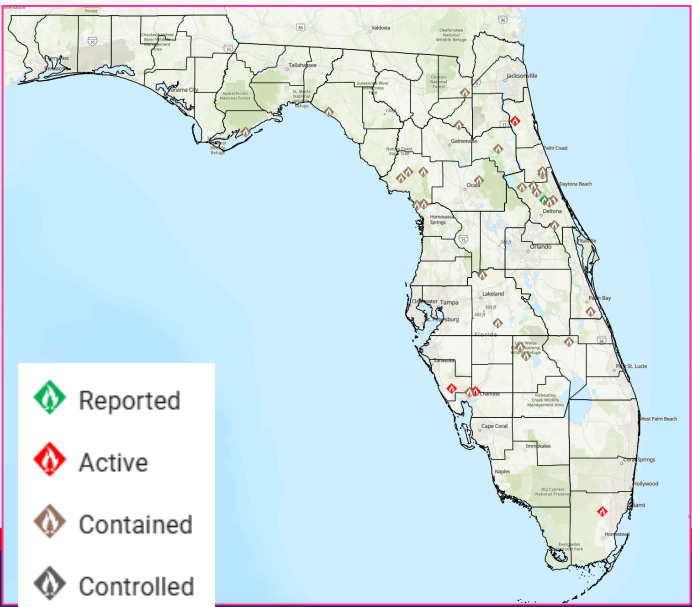
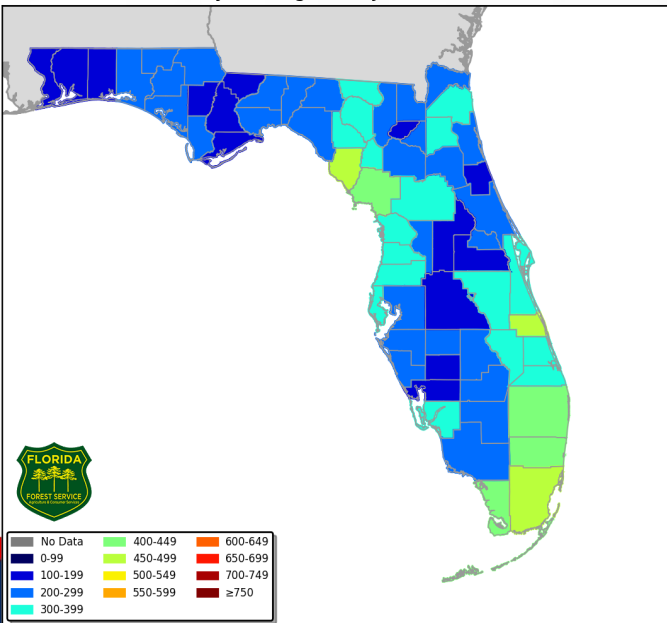
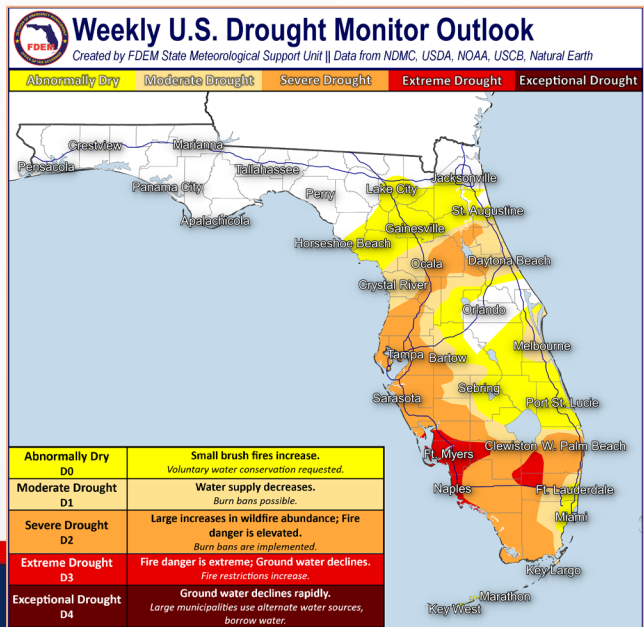
Drought & Fire Weather

Fire Weather: Slightly drier air will filter into portions of the state keeping shower and thunderstorm activity more isolated to scattered in nature compared to the last few days. The Panhandle and West Coast will likely see the greatest coverage of activity where the sea breeze boundaries meet one another. Thunderstorms will be capable of producing frequent lightning and erratic winds that may ignite to further spread ongoing fires, especially areas with ongoing severe to extreme drought conditions. Instances of locally patchy fog will be possible throughout North Florida early Wednesday morning. According to the [Florida Forest Service](#), there are 32 active wildfires across the state burning approximately 755 acres.

Drought: Beneficial rainfall across the Florida Panhandle and Big Bend over the last few days has led to the removal of the lingering Abnormally Dry (emerging drought) conditions for the recent Drought Monitor update (6/12). Widespread rainfall throughout the Peninsula was kept to a minimum, even though some areas received plentiful and beneficial rainfall locally. As a result, minimal changes were made to drought conditions throughout the Peninsula despite increased daily rain chances. Portions of South Florida, mostly along the Southwest Florida coastline and interior portions of Southeast Florida, remain within **Extreme Drought (level 4 of 5)** conditions. Longer-term rainfall deficits continue to show rainfall totals throughout the Peninsula near 1-3" below normal over the last 60 days. Low streamflow also continues for portions of the Everglades and portions of Lake Okeechobee despite recent rainfall.

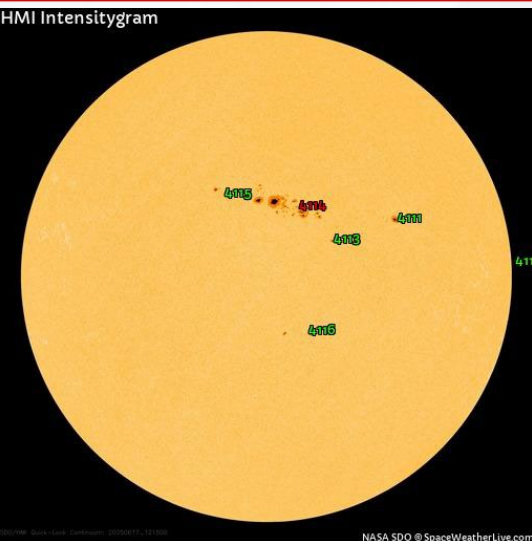
The **Keetch-Byram Drought Index** average for Florida is **277 (-12)** on a scale from 0 (very wet) to 800 (very dry). There are **no** Florida counties with an average KBDI over 500 (drought/increased fire danger).

Keetch Byram Drought Index (KBDI)
County Averages for June 16, 2025

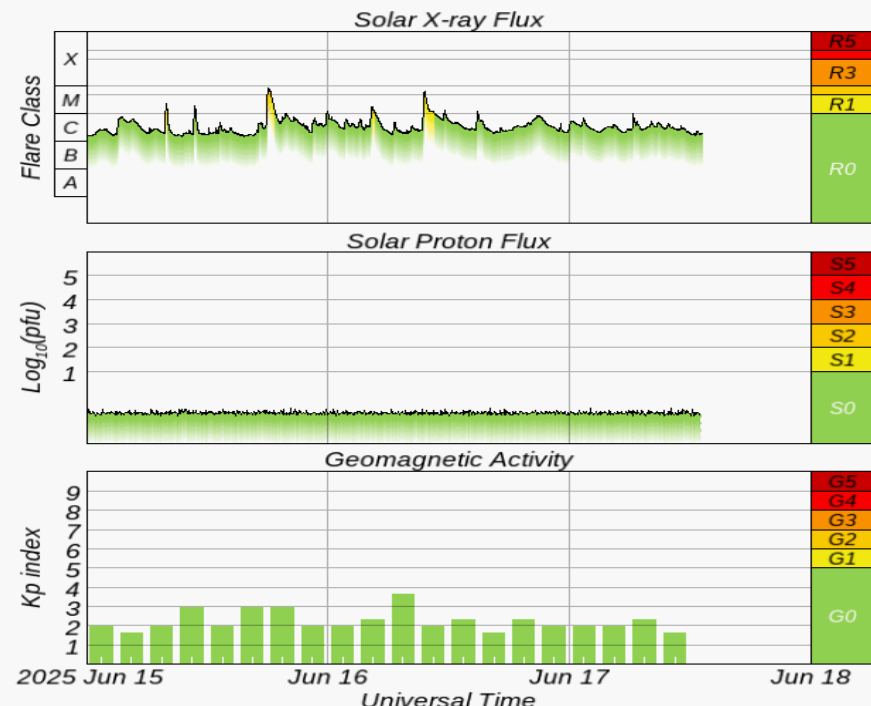
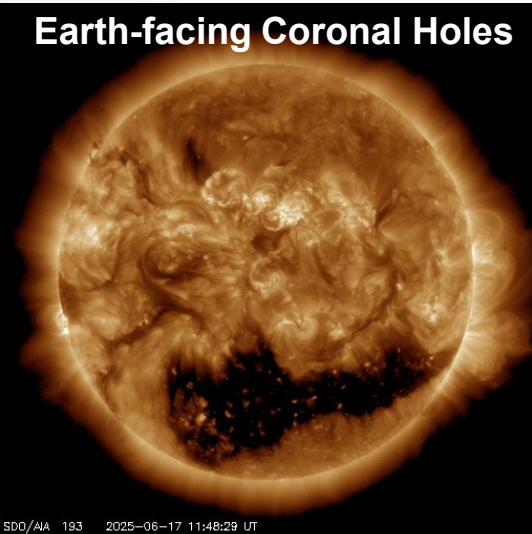




Space Weather



Current Sunspots



Solar Flare Risk	Active Watches & Warnings	Past 24 hours
M-class: 75%	Geomagnetic Storm: None	M1 Solar Flare
X-class: 30%	Radiation Storm: None	R1 Radio Blackouts

48-Hour Geomagnetic Forecast	
6/17	6/18
Max Kp= 4 (G0)	Max Kp= 4 (G0)
Chance of minor activity = 15% severe activity = 1%	Chance of minor activity = 15% severe activity = 5%

Space Weather: Dangerous sunspot #4114 continues to grow and now contains a magnetic field that harbors energy for significant (X-class) solar flares. Additional M-class solar flares will also be possible with activity from sunspot #4114 and sunspot #4105. Minor to moderate (R1-R2) radio blackouts will accompany any M-class solar flares, and strong (R3) radio blackouts will accompany any X-class solar flares. Coronal hole winds flowing from the southern hemisphere of the sun will continue through midweek leading to enhanced solar wind conditions. There is a slight chance for shock effects from a nearby passing Coronal Mass Ejection (CME) on 6/18, which could also lead to an additional enhancement of the solar wind field and bring minor (G1) geomagnetic storm conditions. The overall space threat to Florida remains low.



SWO Communications Systems & Contact Information

Equipment	Contact	Status	Comments
Phone:	800-320-0519, 850-815-4001, 850-591-0071 (Backup Cell)	Operational	
Backup Landline:	850-487-3234, 850-487-3228	Operational	
Fax:	850-815-4979	Operational	
Email:	SWP@em.myflorida.com	Operational	
SWO Tracker:	https://apps.floridadisaster.org/SWO/	Operational	
SLERS:	DEM Statewide	Operational	
FNARS:	WGY974	Operational	
Federal NAWAS:	State Watch Office	Operational	
EMnet Message:	FL.000- State Watch Office	Operational	
EMnet Voice:	FL SWP- State Watch Office	Operational	
IPAWS:	LP.1 Stations via Emnet	Operational	
FIN:	SOFEOC	Operational	
Satellite Phones:	MSAT 888-890-5178 or Iridium 480-263-8838	Operational	
Website:	http://www.floridadisaster.org	Operational	

Users wishing to subscribe (approval pending) to this distribution list, register at:

https://public.govdelivery.com/accounts/FLDEM/subscriber/new?topic_id=Morning_SITREP