



Florida Division of Emergency Management State Watch Office

Morning Situation Report

Monday, June 16, 2025



State Emergency Operations Center Activation Level

Level 2 Activation



SERT On-Call Personnel

| Position | Personnel | Phone | Email |
|--------------------------------|--------------------|----------------|--|
| Operations Chief | Amy Godsey | (850) 519-8483 | Amy.Godsey@em.myflorida.com |
| Watch Officer | Sam Walters | (850) 519-8638 | Sam.Walters@em.myflorida.com |
| Duty Officer | Jeremy Whitt | (850) 755-8521 | Jeremy.Whitt@em.myflorida.com |
| Operations Officer- Day | Caleb Pitts | (850) 815-4001 | SWP@em.myflorida.com |
| Operations Officer- Swing | Kaya Dungey | (850) 815-4001 | SWP@em.myflorida.com |
| Operations Officer- Night | Matthew Peloso | (850) 815-4001 | SWP@em.myflorida.com |
| Meteorologist | Kennedy Tartt | (850) 567-6368 | Kennedy.Tartt@em.myflorida.com |
| Plans Chief | Kaylynn Perry | (850) 254-5657 | Plans_Command@em.myflorida.com |
| Logistics Chief | Christina Goetzman | (850) 519-8581 | Christina.Goetzman@em.myflorida.com |
| Human Services Director | Pam Hughes | (850) 528-5638 | Pamela.Hughes@em.myflorida.com |
| Emergency Services | Tim Kenyon | (850) 591-7732 | Tim.Kenyon@em.myflorida.com |
| Infrastructure Branch Director | Christina Goetzman | (850) 519-8581 | Christina.Goetzman@em.myflorida.com |
| ESF 8 On-Call | Hunter Stafford | (866) 786-4673 | DLDOHDutyOfficers@flhealth.gov |
| Public Information Officer | Stephanie Hartman | (850) 570-3053 | Stephanie.Hartman@em.myflorida.com |
| DEM Finance and Admin | Jeremy Smith | (850) 273-1273 | Jeremy.Smith@em.myflorida.com |



Response Regional Coordination Team



| Team | County Location | Visits |
|------------------------------|-----------------|--|
| Region 1: Jim Roberts | Gadsden | Regional Meeting Prep |
| Region 2: Enrique Gaston | Franklin | Office Admin/EM County Visit |
| Region 3: Glen Hammers | Columbia | Office Admin |
| Region 4: Tara Kostich | Clay | Office Admin |
| Region 5: Austin Beeghly | Seminole/Orange | POD Train the Trainer/Hospital Partner Meeting |
| Region 6: Paul Siddall | Pinellas | Hospital Hurricane Planning Meeting |
| Region 7: Kathryn Hollenbeck | Hardee | SERT EM Meeting |
| Region 8: Mason Kozac | Out of Service | Leave (See Coverage) |
| Region 9: Vacant | N/A | N/A |
| Region 10: Claudia Baker | Dade | FIFA Club Cup Match |

Region 8 Coverage Provided by Response Coordinator 7
Region 9 Coverage Provided by Response Coordinator 6

| Status |
|------------------------------|
| Normal Operations |
| Out of Service / Unavailable |



Recovery Regional Coordination Team

| Team | County Location | Status / Activities |
|----------------------------------|-----------------|-------------------------|
| Region 1: Allison Blevins | Washington | Administrative Duties |
| Region 2: Justin Lazzara | Leave | See Coverage |
| Region 3: Vacant | N/A | See Coverage |
| Region 4: Joshua Saunders | Clay | Regional Quarterly Prep |
| Region 5: Elizabeth Caison | Leave | See Coverage |
| Vacant | N/A | See Coverage |
| Region 6: Vacant | | |
| Region 7: Antonio Zapata | Hardee | SERT Meeting |
| Region 8: Ja-Pheth Butler-Miller | Indian River | Administrative Duties |
| Region 9: Jacob Ginsberg | Sarasota | Administrative Duties |
| Region 10: Vacant | N/A | See Coverage |

Region 2 Coverage Provided by Recovery Coordinator 4

Region 3 Coverage Provided by Recovery Coordinator 2 & 4

Region 5 Coverage Provided by Recovery Coordinator 4

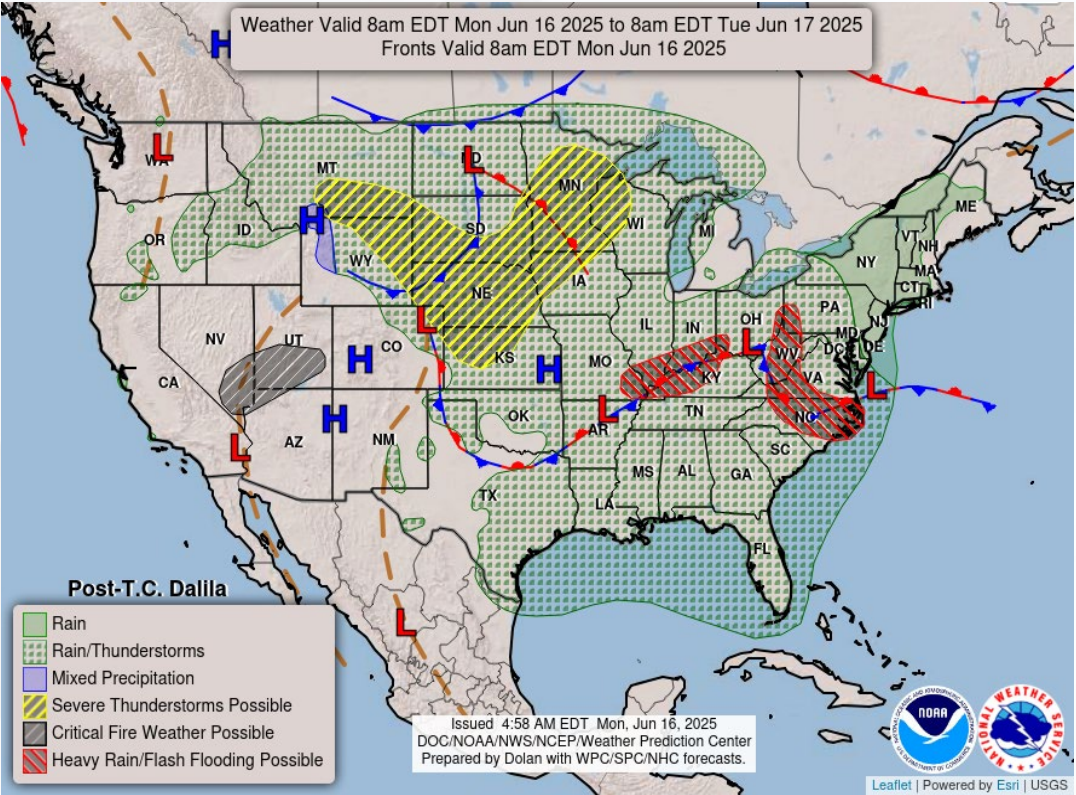
Region 6 Coverage Provided by Recovery Coordinator 7

Region 10 Coverage Provided by Recovery Coordinator 8

| Status |
|------------------------------|
| Normal Operations |
| In Region / Delayed Response |
| Deployed / Delayed Response |
| Out of Service / Unavailable |

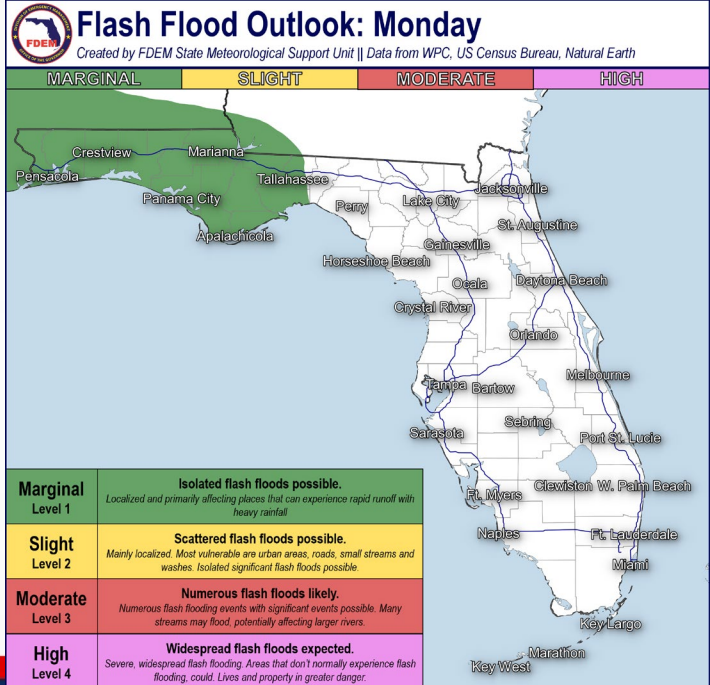
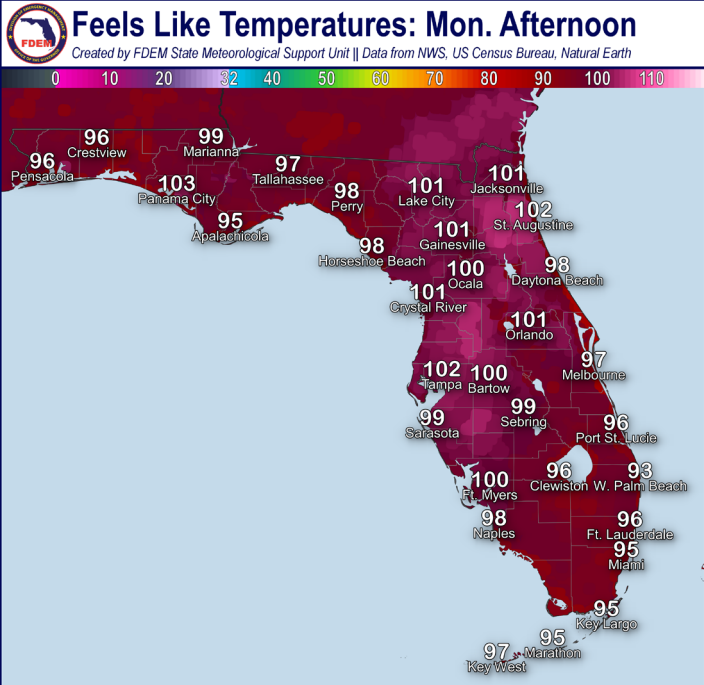


Meteorology Summary



Today's Weather Map

| T threat | R1 | R2 | R3 | R4 | R5 | R6 | R7 | R8 | R9 | R10 |
|----------------------------|--|----|----|----|----|----|----|----|----|-----|
| Lightning | M | H | H | H | M | H | M | L | M | L |
| Tornado | | | | | | | | | | |
| Damaging Wind | | | | | | | | | | |
| Hail | | | | | | | | | | |
| Flash Flooding | L | L | L | | | L | | | L | |
| Excessive Heat | L | L | M | M | M | M | L | L | L | L |
| Wildfire | | | | | | | | | | |
| Fog (Overnight) | | | | | | | | | | |
| Rip Currents | M | M | L | M | M | L | | M | L | M |
| Lake Okeechobee Elevation | 11.18 ft. (2.00 ft. <u>Below</u> Normal) | | | | | | | | | |
| Keetch-Byram Drought Index | 289 (-17) on a scale from 0 (very moist) to 800 (very dry) | | | | | | | | | |





Meteorology Summary

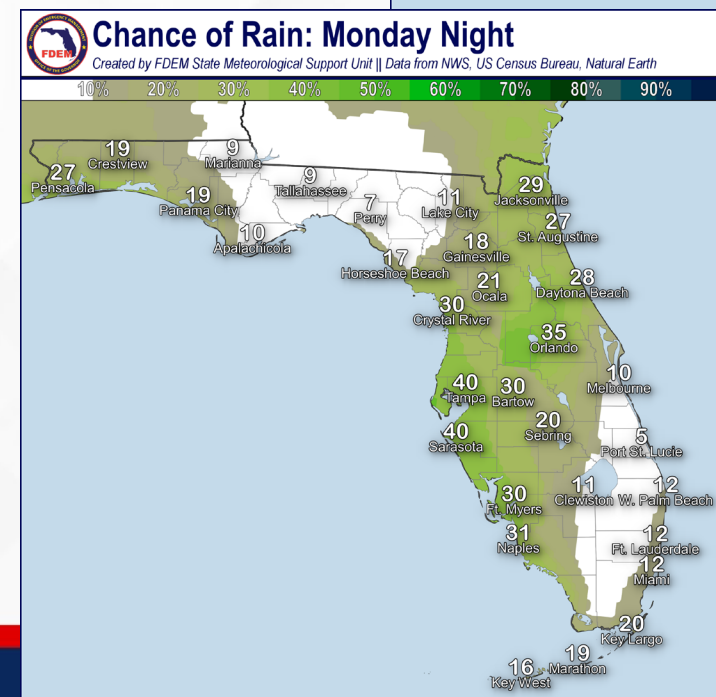
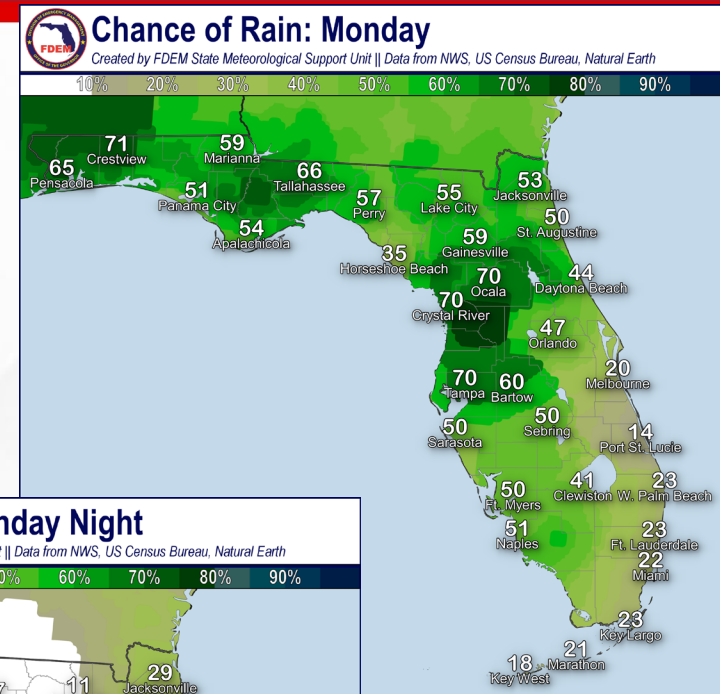
Statewide Overview, Next 24 Hours:

A stagnant and persistent weather pattern will continue throughout the state leading to scattered to numerous showers and thunderstorms throughout the day (50-75% chance of rain). Morning showers and embedded thunderstorms have already developed along the coastal Big Bend and Nature Coast, and they will continue to move onshore and inland throughout the day becoming more scattered in nature. Throughout the Peninsula, the Atlantic and Gulf sea breeze boundaries will collide with one another bringing scattered to numerous showers and thunderstorms this afternoon and evening, with the greatest chance along the western half of the Florida Peninsula. **Any thunderstorm** will be capable of producing frequent lightning, gusty winds and torrential downpours. The Weather Prediction Center (WPC) is outlooking a **Marginal Risk (level 1 of 4) for Flash Flooding** across the Panhandle where torrential downpours over already saturated grounds could lead to **localized flash flooding and ponding of water**, especially for urban and low-lying/poor drainage areas.

Warm and muggy conditions will continue throughout the state courtesy of the summertime weather pattern. High temperatures will reach the upper 80s to lower 90s this afternoon, with **heat index values** reaching the **upper 90s to triple digits (100-105-degrees)**.

As the sea breeze shifts offshore and the sun sets, showers and thunderstorms will begin to dissipate or move offshore towards the coastal waters. A few showers may linger along the coastlines and coastal waters throughout the overnight hours before beginning to drift onshore early in the morning on Tuesday (30-50% chance of rain). Instances of **patchy fog** may be possible early Tuesday morning as well throughout North Florida.

Low temperatures will remain in the 70s throughout the state and lower 80s for the Keys.

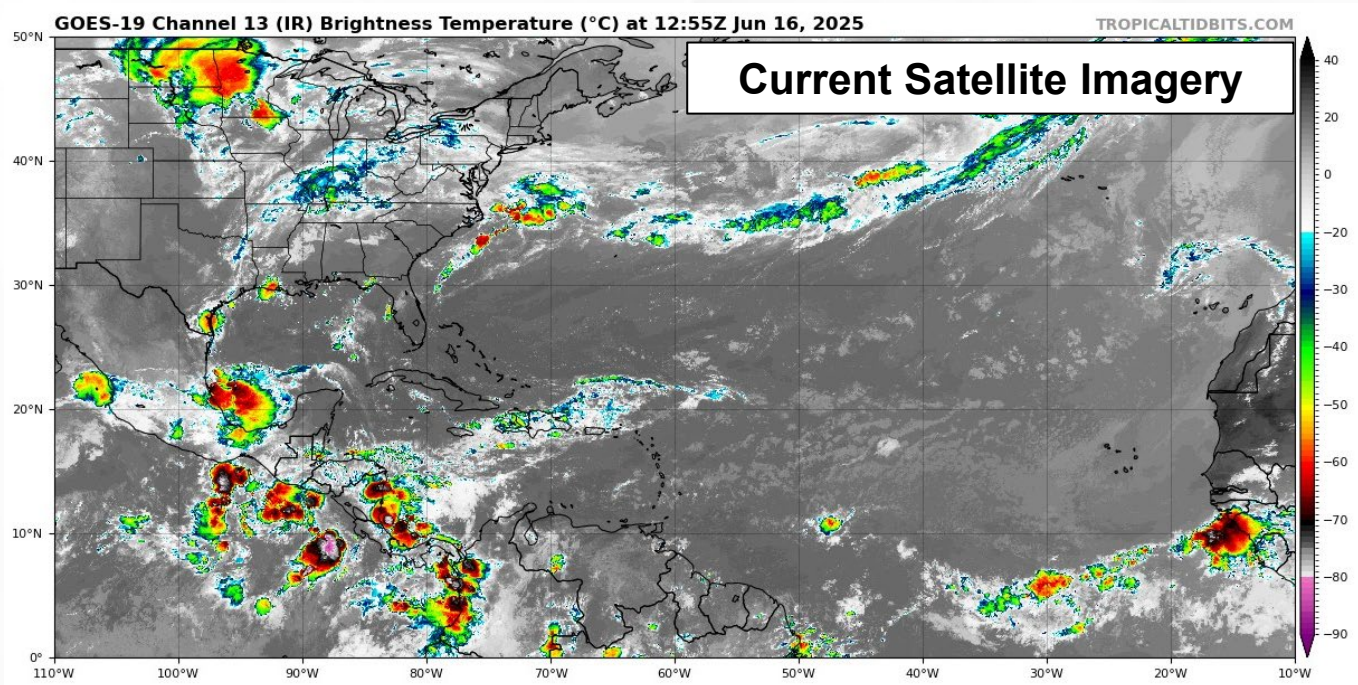
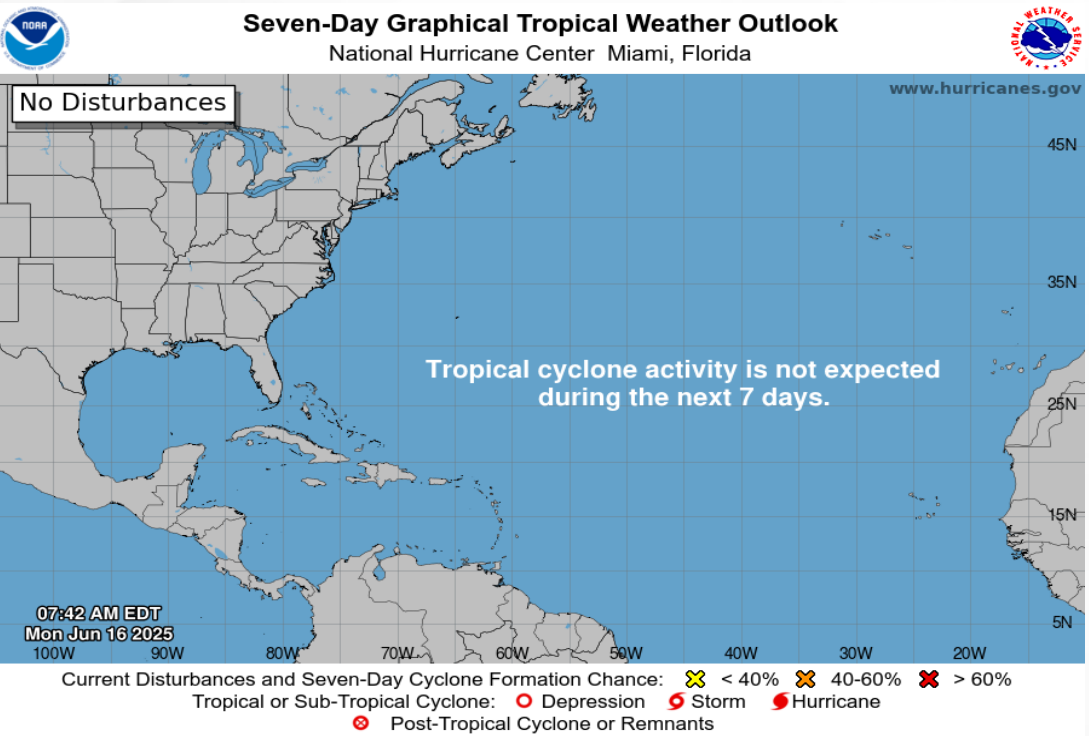




Tropical Weather

For the latest on the tropics, please visit the National Hurricane Center (NHC) at www.hurricanes.gov.

Tropical development is not expected over the next 7 days across the Atlantic basin.





Coastal Hazards & Hydrology

Rip Currents: A **moderate risk for rip currents** persists along Florida Panhandle and East Coast beaches. Low rip currents conditions will continue for the Florida West Coast. For the latest Rip Current Outlook, visit www.weather.gov/beach.

Marine Hazards: Wave heights of 1-2' can be expected along all Florida Gulf Coast beaches today. Longer-period onshore flow will result in 2-3' waves for the Atlantic Coast.

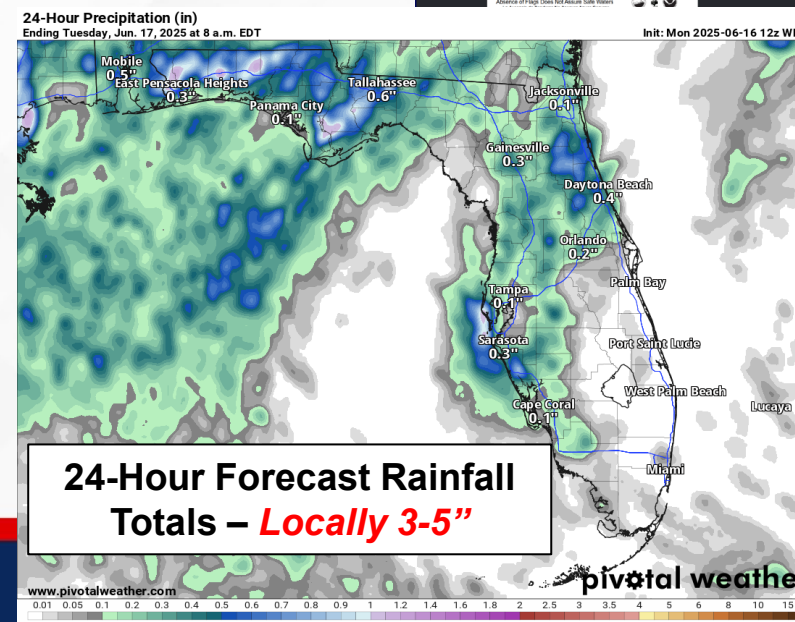
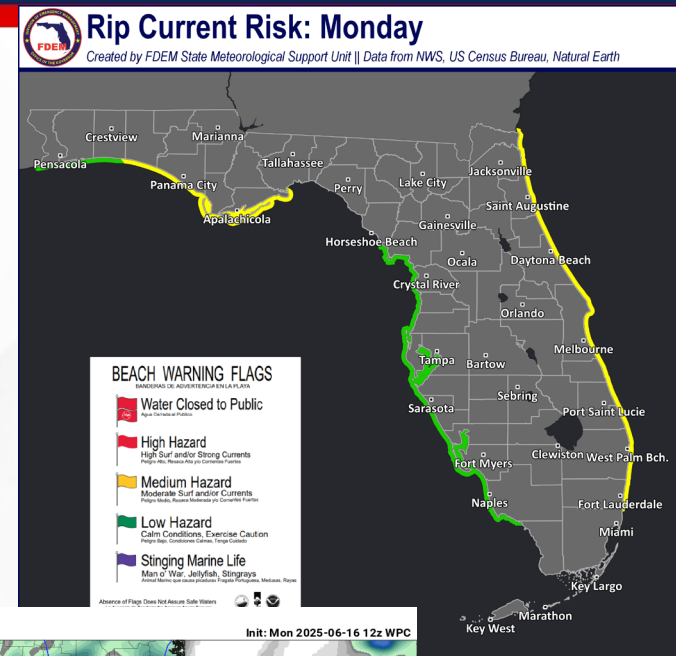
Red Tide has been not been observed along any Florida coastline over the past week (valid 6/6).

Coastal Flooding: There is no risk for coastal flooding today.

Flash Flooding: The Weather Prediction Center (WPC) is outlooking a Marginal Risk (level 1 of 4) for Flash Flooding across the Florida Panhandle as heavy downpours may lead to instances of flash flooding and ponding of water across urban and low-lying/poor drainage areas. Grounds and soils already remain saturated following several days of recent heavy rainfall, which may lead to an earlier onset of flooding and ponding of water. Rainfall totals of 1-2" can be expected with locally higher totals upwards of 3-5" possible.

Riverine Flooding: There are no riverine concerns across the state. For more information, visit the [River Forecast Center](http://www.riverforecastcenter.com).

Lake Okeechobee's average elevation is 11.18 feet, which is within the operational band and is 2.00 feet below normal for this time of year.





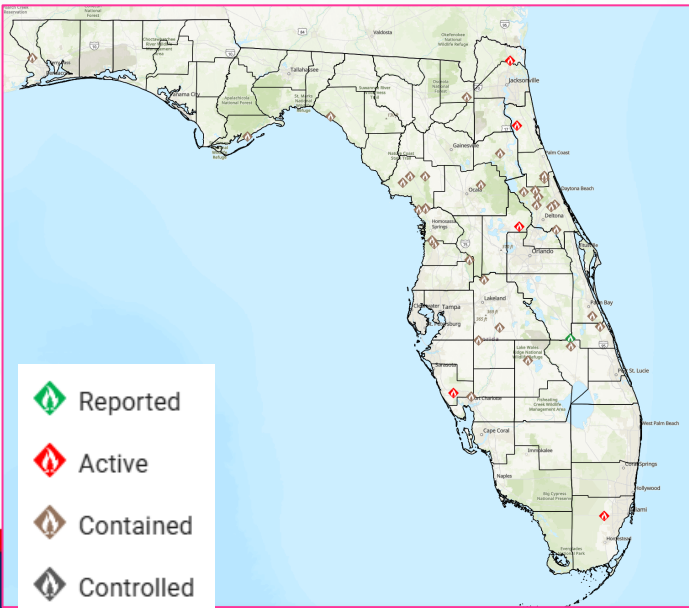
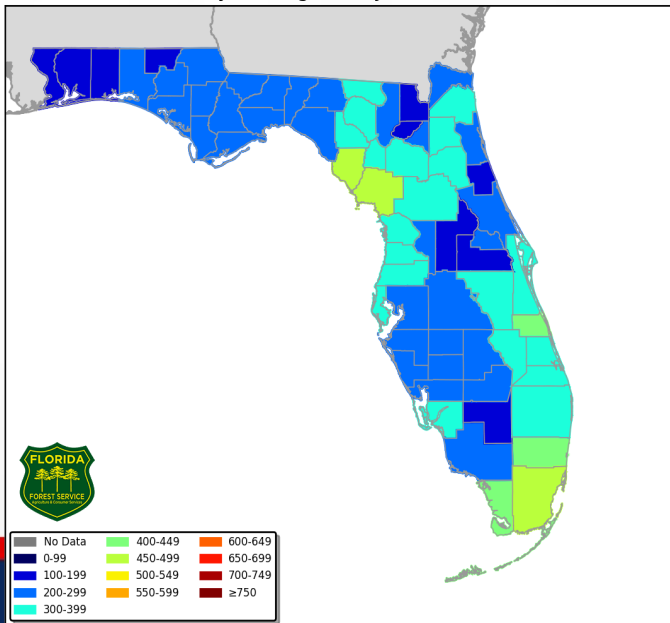
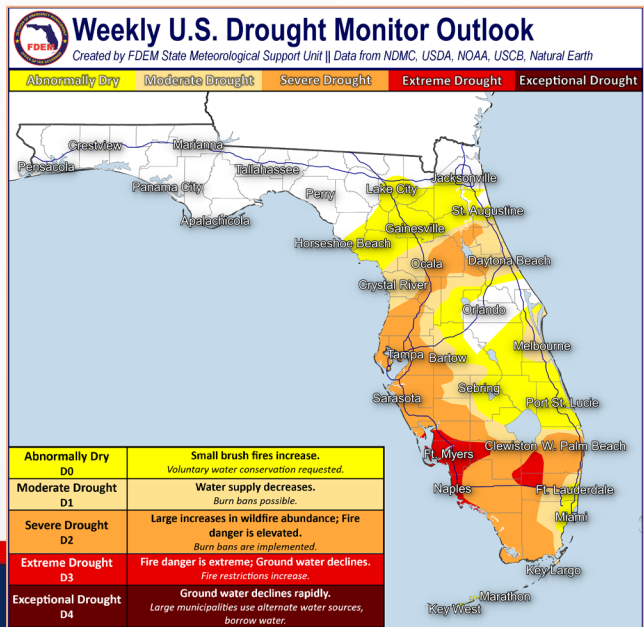
Drought & Fire Weather

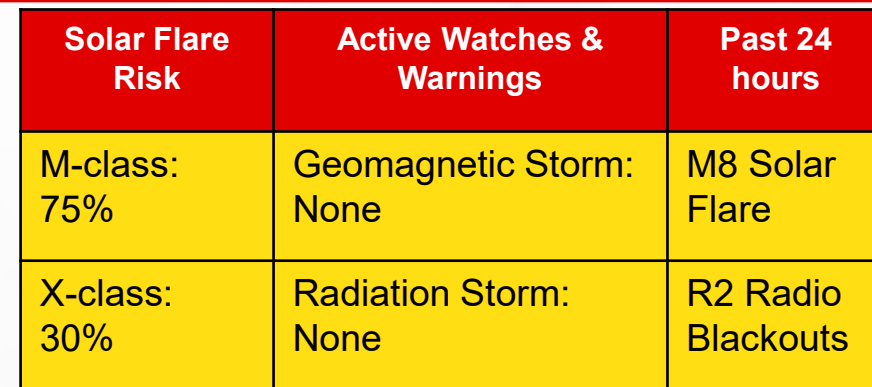
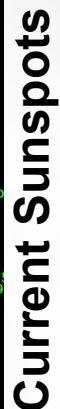
Fire Weather: Scattered to numerous showers and thunderstorms can be expected throughout the Sunshine State, keeping the wildfire threat very low. Thunderstorms will be capable of producing frequent lightning and erratic winds that could ignite or further spread ongoing fires, especially areas over ongoing severe to extreme drought conditions. **Saharan Dry Air** will linger in areas along the Space and Treasure Coasts keeping shower and thunderstorm activity more isolated in nature. According to the [Florida Forest Service](#), there are 38 active wildfires across the state burning approximately 2,279 acres.

Drought: Beneficial rainfall across the Florida Panhandle and Big Bend over the last few days has led to the removal of the lingering Abnormally Dry (emerging drought) conditions for the recent Drought Monitor update (6/12). Widespread rainfall throughout the Peninsula was kept to a minimum, even though some areas received plentiful and beneficial rainfall locally. As a result, minimal chances were made to drought conditions throughout the Peninsula despite increased daily rain chances. Portions of South Florida, mostly along the Southwest Florida coastline and interior portions of Southeast Florida, remain within **Extreme Drought (level 4 of 5)** conditions. Longer-term rainfall deficits continue to show rainfall totals throughout the Peninsula near 1-3" below normal over the last 60 days. Low streamflow also continues for portions of the Everglades and portions of Lake Okeechobee despite recent rainfall.

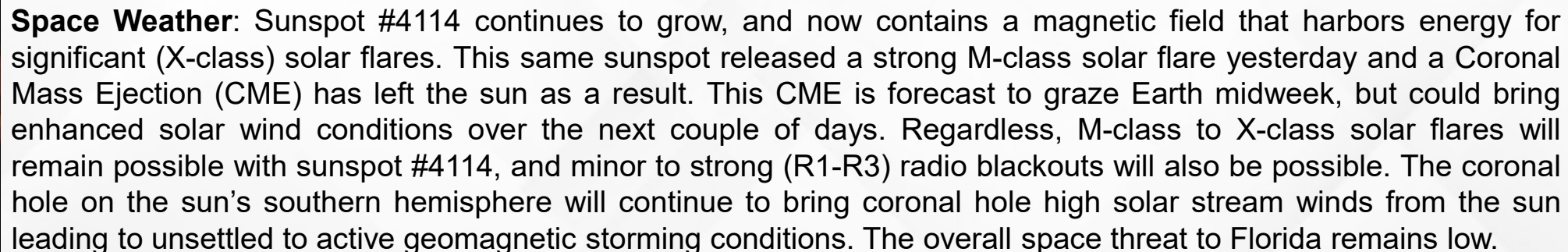
The **Keetch-Byram Drought Index** average for Florida is **289 (-17)** on a scale from 0 (very wet) to 800 (very dry). There are **no** Florida counties with an average KBDI over 500 (drought/increased fire danger).

Keetch Byram Drought Index (KBDI)
County Averages for June 15, 2025





| 6/16 | 6/17 |
|---|---|
| Max Kp= 5 (G1) | Max Kp= 4 (G0) |
| Chance of minor activity = 20% severe activity = 5% | Chance of minor activity = 15% severe activity = 5% |





SWO Communications Systems & Contact Information

| Equipment | Contact | Status | Comments |
|-------------------|---|-------------|----------|
| Phone: | 800-320-0519, 850-815-4001, 850-591-0071 (Backup Cell) | Operational | |
| Backup Landline: | 850-487-3234, 850-487-3228 | Operational | |
| Fax: | 850-815-4979 | Operational | |
| Email: | SWP@em.myflorida.com | Operational | |
| SWO Tracker: | https://apps.floridadisaster.org/SWO/ | Operational | |
| SLERS: | DEM Statewide | Operational | |
| FNARS: | WGY974 | Operational | |
| Federal NAWAS: | State Watch Office | Operational | |
| EMnet Message: | FL.000- State Watch Office | Operational | |
| EMnet Voice: | FL SWP- State Watch Office | Operational | |
| IPAWS: | LP.1 Stations via Emnet | Operational | |
| FIN: | SOFEOC | Operational | |
| Satellite Phones: | MSAT 888-890-5178 or Iridium 480-263-8838 | Operational | |
| Website: | http://www.floridadisaster.org | Operational | |

Users wishing to subscribe (approval pending) to this distribution list, register at:

https://public.govdelivery.com/accounts/FLDEM/subscriber/new?topic_id=Morning_SITREP