



Florida Division of Emergency Management State Watch Office

Morning Situation Report

Friday, June 13, 2025



State Emergency Operations Center Activation Level

Level 2 Activation



SERT On-Call Personnel

Position	Personnel	Phone	Email
Operations Chief	Amy Godsey	(850) 519-8483	Amy.Godsey@em.myflorida.com
Watch Officer	Caitlyn Gillespie	(850) 688-2119	Caitlyn.Gillespie@em.myflorida.com
Duty Officer	Jay Griffin	(850) 524-4094	Kellen.Griffin-Jay@em.myflorida.com
Operations Officer- Day	Daniel Leader	(850) 815-4001	SWP@em.myflorida.com
Operations Officer- Swing	Zachary Remante	(850) 815-4001	SWP@em.myflorida.com
Operations Officer- Night	Jim Lawhon	(850) 815-4001	SWP@em.myflorida.com
Meteorologist	Caitlyn Gillespie	(850) 688-2119	Caitlyn.Gillespie@em.myflorida.com
Plans Chief	Kaylynn Perry	(850) 254-5657	Plans_Command@em.myflorida.com
Logistics Chief	Christina Goetzman	(850) 519-8581	Christina.Goetzman@em.myflorida.com
Human Services Director	Pam Hughes	(850) 528-5638	Pamela.Hughes@em.myflorida.com
Emergency Services	Tim Kenyon	(850) 591-7732	Tim.Kenyon@em.myflorida.com
Infrastructure Branch Director	Christina Goetzman	(850) 519-8581	Christina.Goetzman@em.myflorida.com
ESF 8 On-Call	Brandon Gore	(866) 786-4673	DLDOHDutyOfficers@flhealth.gov
Public Information Officer	Stephanie Hartman	(850) 570-3053	Stephanie.Hartman@em.myflorida.com
DEM Finance and Admin	Jeremy Smith	(850) 273-1273	Jeremy.Smith@em.myflorida.com



Response Regional Coordination Team



Team	County Location	Visits
Region 1: Jim Roberts	Out of Service	Leave (See Coverage)
Region 2: Enrique Gaston	Leon	Response Coordinator Onboarding Orientation / Office Admin
Region 3: Glen Hammers	Hamilton	Outreach Event / Everbridge-IPAWS Call
Region 4: Tara Kostich	Duval	JEA HURREX AAR
Region 5: Austin Beeghly	Orange	FTEM
Region 6: Paul Siddall	Pinellas	USCG Change of Command / Exercise AAR
Region 7: Kathryn Hollenbeck	Polk	Everbridge / IPAWS Call
Region 8: Mason Kozac	Orange, St Lucie	FTEM / Return to R8 Travel
Region 9: Vacant	N/A	N/A
Region 10: Claudia Baker	Orange, Miami-Dade	FTEM / Return to R10 Travel / FIU Exercise

Region 1 Coverage Provided by Response Coordinator 3
Region 9 Coverage Provided by Recovery Coordinator 9

Status

Normal Operations

Out of Service / Unavailable



Recovery Regional Coordination Team

Team	County Location	Status / Activities
Region 1: Allison Blevins	In State	Administrative Duties
Region 2: Justin Lazzara	Leave	See Coverage
Region 3: Vacant	N/A	See Coverage
Region 4: Joshua Saunders	In State	FTEM / Return Travel to Region
Region 5: Elizabeth Caison	Orange	FTEM
Vacant	N/A	See Coverage
Region 6: Vacant		
Region 7: Antonio Zapata	Orange	FTEM
Region 8: Ja-Pheth Butler-Miller	Orange	FTEM
Region 9: Jacob Ginsberg	Orange	FTEM
Region 10: Vacant	N/A	See Coverage

Region 2 Coverage Provided by Recovery Coordinator 4

Region 3 Coverage Provided by Recovery Coordinator 2 & 4

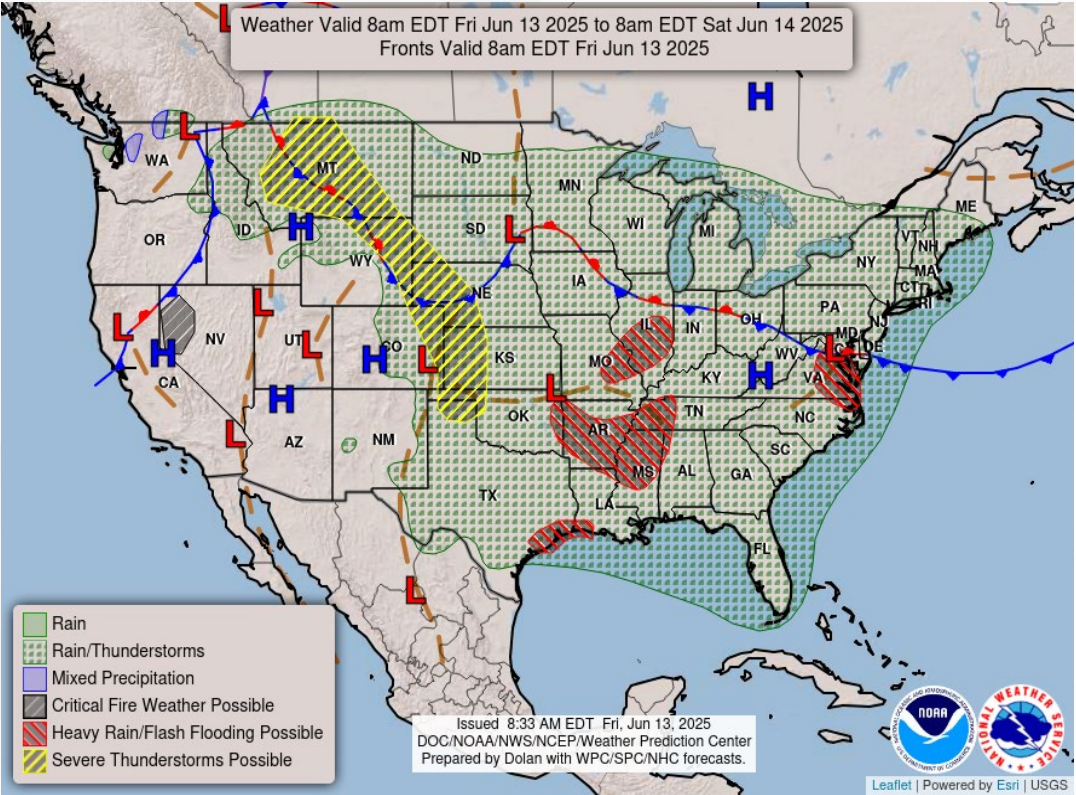
Region 6 Coverage Provided by Recovery Coordinator 5

Region 10 Coverage Provided by Recovery Coordinator 8

Status
Normal Operations
In Region / Delayed Response
Deployed / Delayed Response
Out of Service / Unavailable

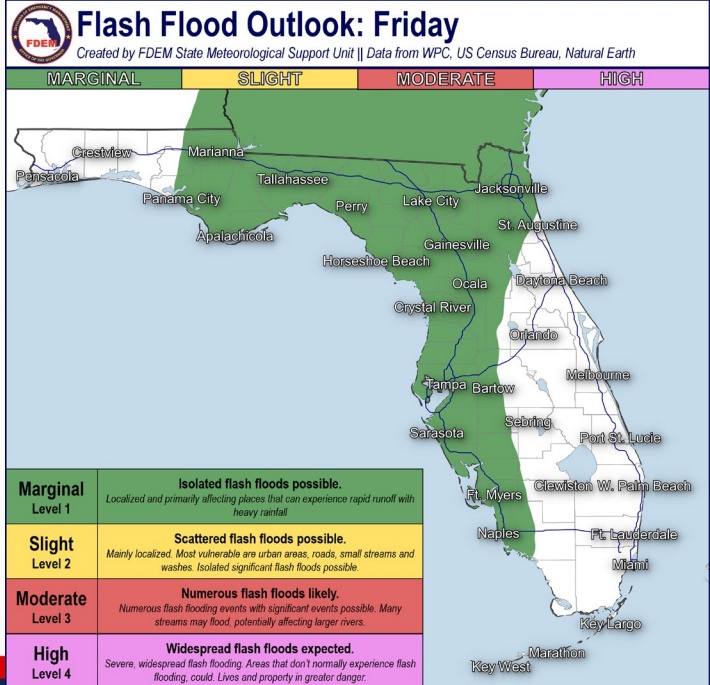
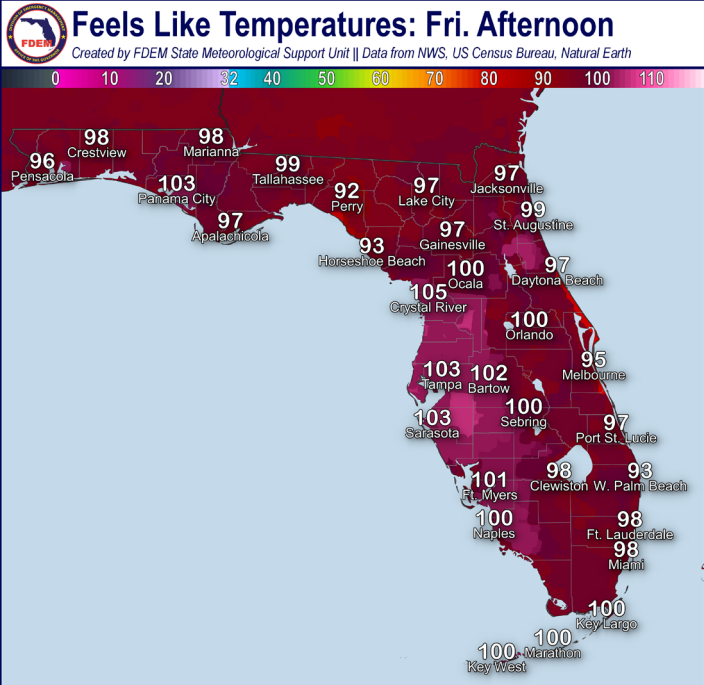


Meteorology Summary



Today's Weather Map

T threat	R1	R2	R3	R4	R5	R6	R7	R8	R9	R10
Lightning	M	H	H	H	L	H	M	L	M	L
Tornado										
Damaging Wind										
Hail										
Flash Flooding	L	L	L	L		L			L	
Excessive Heat	L	L	M	M	L	M	M	L	M	L
Wildfire										
Fog (Overnight)										
Rip Currents	M	M	L	M	M	L		M	L	M
Lake Okeechobee Elevation	11.16 ft. (2.02 ft. <u>Below</u> Normal)									
Keetch-Byram Drought Index	330 (-19) on a scale from 0 (very moist) to 800 (very dry)									





Meteorology Summary

Statewide Overview, Next 24 Hours:

Southerly to southeasterly winds are bringing isolated showers and thunderstorms towards the Big Bend and Nature Coasts this morning as the sea breeze gets an early start. Throughout the day, additional scattered to numerous showers and thunderstorms can be expected across North and West Florida as the sea breeze moves inland and collides (65-75% chance of rain). **Embedded strong to severe thunderstorms** may also be possible during the peak heating hours of the day, bringing frequent lightning, gusty winds and torrential downpours. Tropical moisture will help thunderstorms produce heavy and torrential downpours, especially throughout most of North and West Florida today. The Weather Prediction Center (WPC) is outlooking a **Marginal Risk (level 1 of 4) for Flash Flooding** as multiple rounds of intense downpours could lead to **instances of flash flooding and ponding of water**, especially for urban and low-lying/poor drainage areas. **Saharan Dry Air** will move into South Florida, and portions of East-Central Florida, which may limit shower and thunderstorm coverage; however, isolated to widely scattered showers and an embedded thunderstorm or two will be possible (30-50% chance of rain).

High temperatures will continue to reach the upper 80s to lower 90s across the state. Heat index values, or **feels-like temperatures**, will also continue to reach the **middle 90s to triple digits (100-106-degrees)**, with the warmest values across Nature Coast and West-Central Florida. These areas could see heat index values **near Heat Advisory criteria** briefly during the early to mid-afternoon hours.

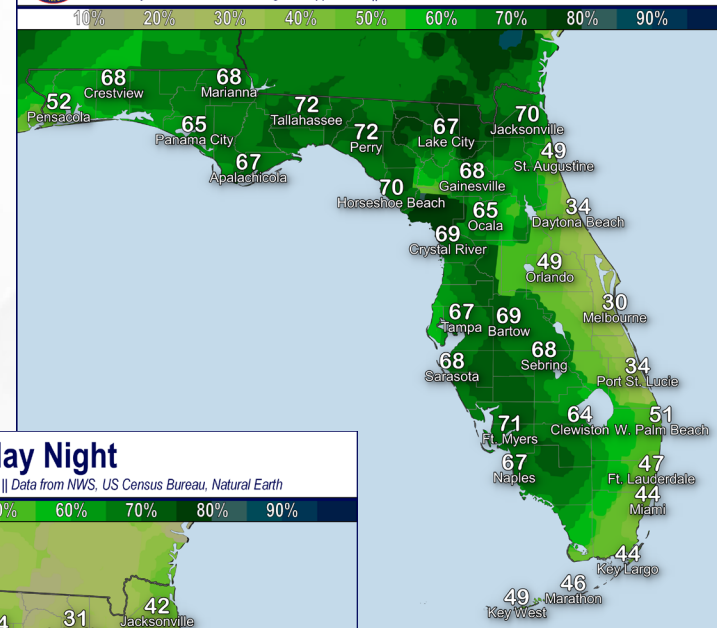
Shower and thunderstorm activity will continue into the evening hours before the sea breeze moves offshore. As the sea breeze moves offshore and the sun goes down, shower and thunderstorm activity will begin to dissipate and move offshore as well. Some embedded showers and thunderstorms may hover near or along the coast and coastal waters overnight as the sea breeze reverses, but inland areas can expect mostly dry conditions overnight (15-40% chance of rain).

Low temperatures in the 70s can be expected throughout the state and lower 80s for the Keys.



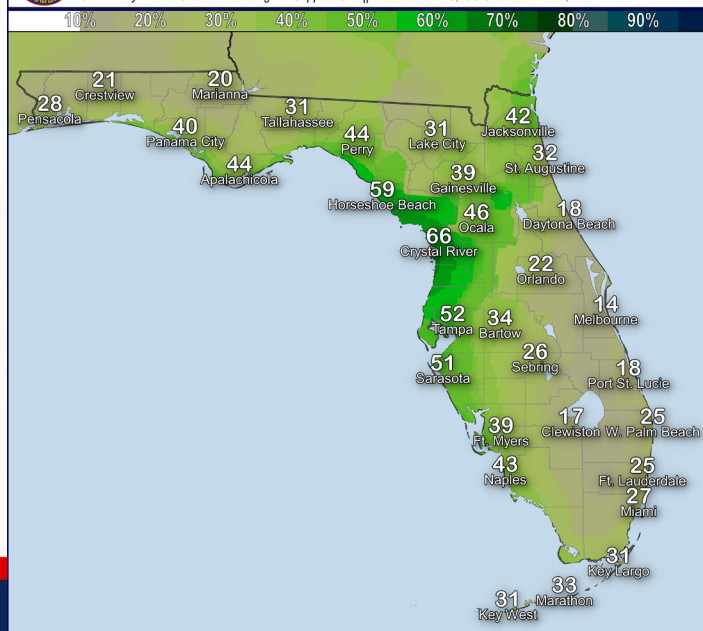
Chance of Rain: Friday

Created by FDEM State Meteorological Support Unit || Data from NWS, US Census Bureau, Natural Earth



Chance of Rain: Friday Night

Created by FDEM State Meteorological Support Unit || Data from NWS, US Census Bureau, Natural Earth

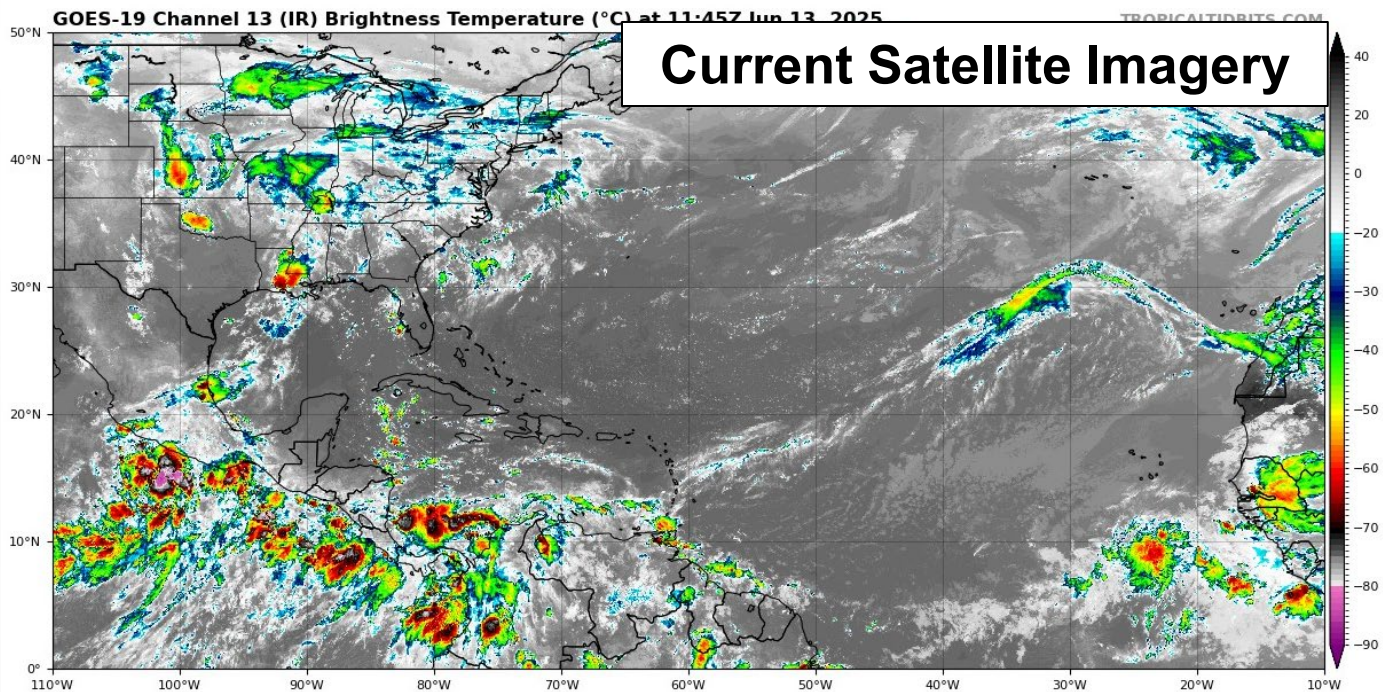
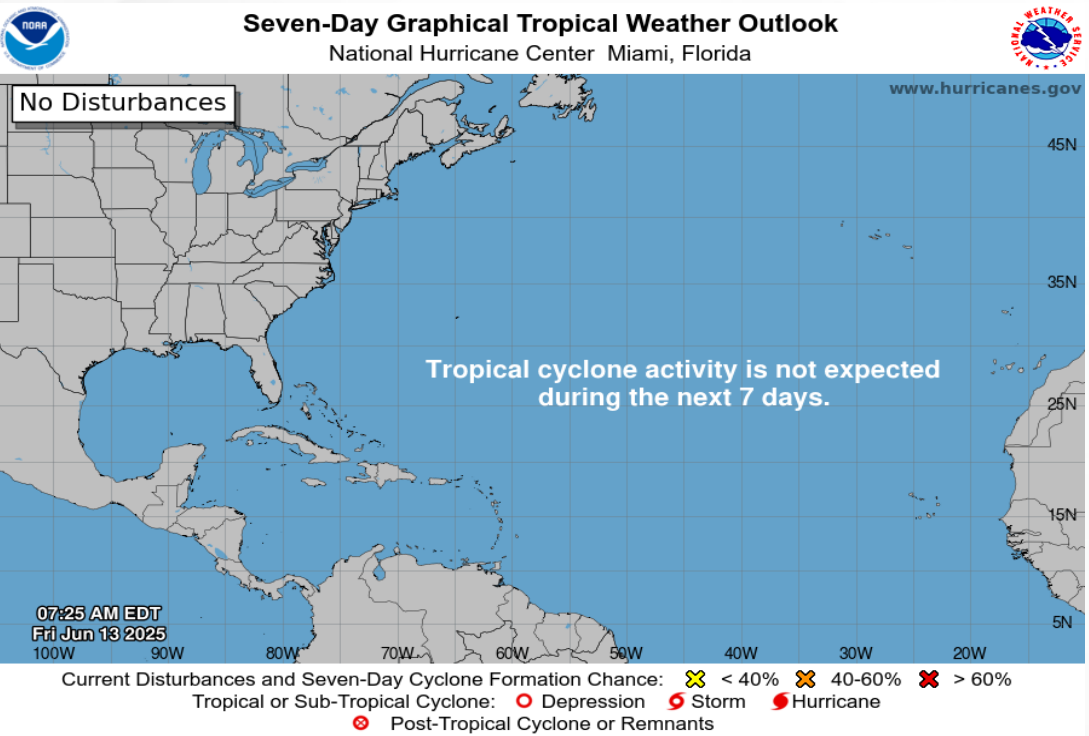




Tropical Weather

For the latest on the tropics, please visit the National Hurricane Center (NHC) at www.hurricanes.gov.

Tropical development is not expected over the next 7 days across the Atlantic basin.





Coastal Hazards & Hydrology

Rip Currents: A **moderate risk for rip currents** persists to the Panhandle and Atlantic Coast beaches. West Coast beaches will continue to see a low risk for rip currents. For the latest Rip Current Outlook, visit www.weather.gov/beach.

Marine Hazards: Calm marine conditions and seas will remain near 1' for all Gulf and West Coast beaches. East Coast beaches will see slightly elevated marine conditions with wave heights near 1-3', except for Atlantic-facing Key beaches which will see **wave heights upwards of 4'** this morning and into the afternoon. *Thunderstorms may create rough surf and choppy waters.*

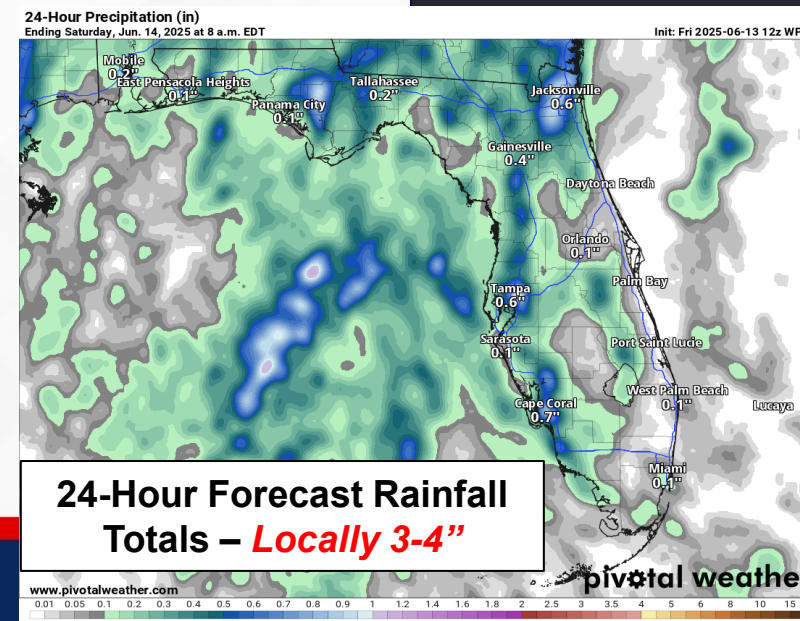
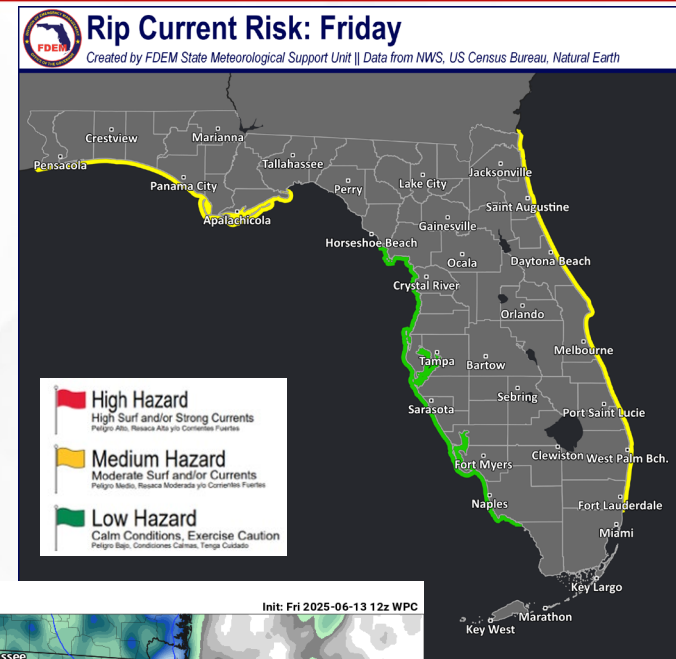
Red Tide has been not been observed along any Florida coastline over the past week (valid 6/6).

Coastal Flooding: There is no risk for coastal flooding today.

Flash Flooding: The Weather Prediction Center (WPC) is outlooking a **Marginal Risk (level 1 of 4) for Flash Flooding** across much of North Florida and the West Coast as locally heavy and intense downpours could lead to instances of **flash flooding and ponding of water** at times. Some of these areas have already seen repeated rounds of rainfall over the last few days, and additional heavy rainfall could lead to an earlier onset of flash flooding. Any slow-moving thunderstorm will also be capable of providing several rounds of torrential downpours over the same area, which could also lead to localized flash flooding concerns. Rainfall totals of 1-2" can be expected, with **locally higher totals** upwards of 3-4" possible.

Riverine Flooding: The [Big Coldwater Creek near Milton](#) and [Escambia River near Century](#) remain within Action Stage (bank-full) as water levels continue to gradually decline. Additional heavy rainfall over these waterways may slow the rate of water levels while they decline. There are no additional riverine concerns across the state. For more information, visit the [River Forecast Center](#).

Lake Okeechobee's average elevation is 11.16 feet, which is within the operational band and is 2.02 feet below normal for this time of year.





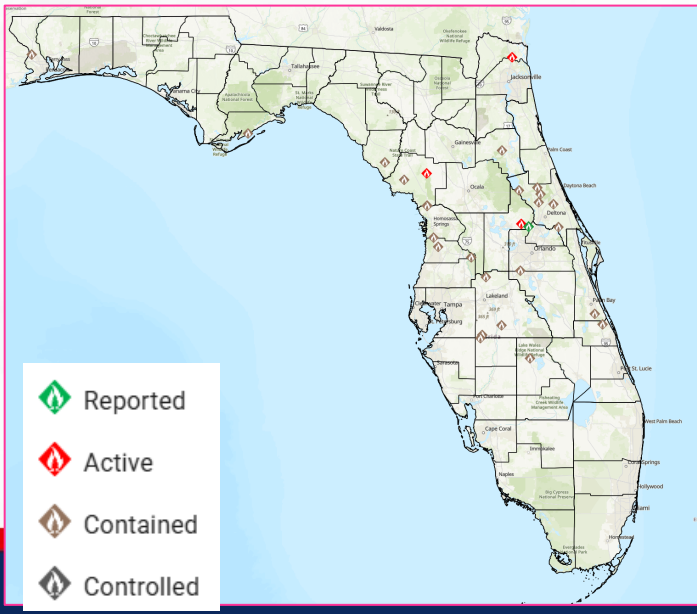
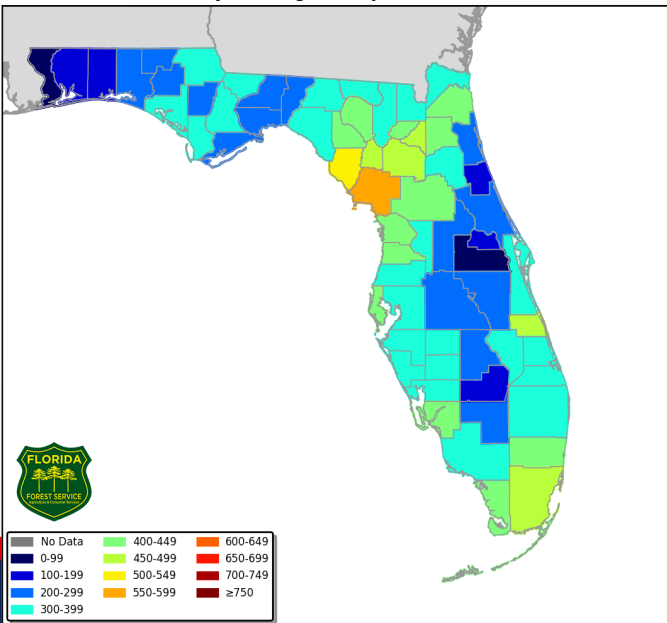
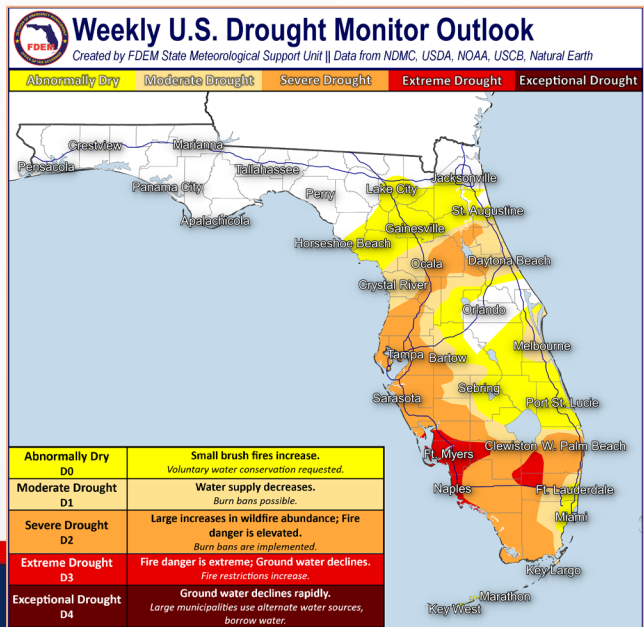
Drought & Fire Weather

Fire Weather: Daily showers and thunderstorms can be expected across the state today with the help of southeasterly winds bringing tropical moisture northward. Thunderstorms will be capable of producing frequent lightning and erratic winds that could ignite or further spread ongoing fires, especially areas over ongoing severe to extreme drought conditions. Saharan Dry Air will move into South Florida today, keeping thunderstorm activity more isolated to scattered, but also bring hazy skies. According to the [Florida Forest Service](#), there are 30 active wildfires across the state burning approximately 1,808 acres.

Drought: Beneficial rainfall across the Florida Panhandle and Big Bend over the last few days has led to the removal of the lingering Abnormally Dry (emerging drought) conditions for this week's update. Widespread rainfall throughout the Peninsula was kept to a minimum, even though some areas received plentiful and beneficial rainfall locally. As a result, minimal changes were made to drought conditions throughout the Peninsula despite increased daily rain chances. Portions of South Florida, mostly along the Southwest Florida coastline and interior portions of Southeast Florida, remain within **Extreme Drought (level 4 of 5)** conditions. Longer-term rainfall deficits continue to show rainfall totals throughout the Peninsula near 1-3" below normal over the last 60 days. Low streamflow also continues for portions of the Everglades and portions of Lake Okeechobee despite recent rainfall.

The **Keetch-Byram Drought Index** average for Florida is **330 (-19)** on a scale from 0 (very wet) to 800 (very dry). There are **2** Florida counties (Dixie and Levy) with an average KBDI over 500 (drought/increased fire danger).

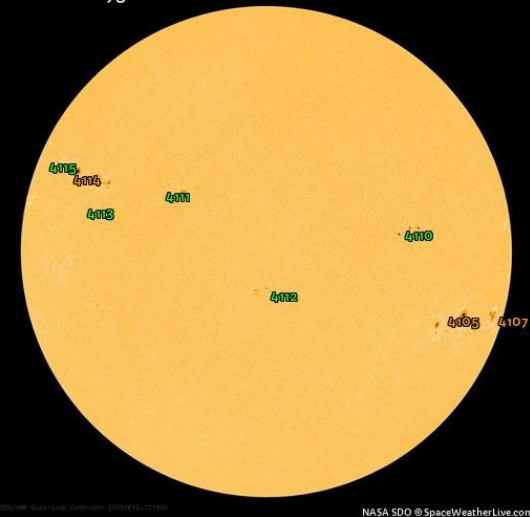
Keetch Byram Drought Index (KBDI)
County Averages for June 12, 2025





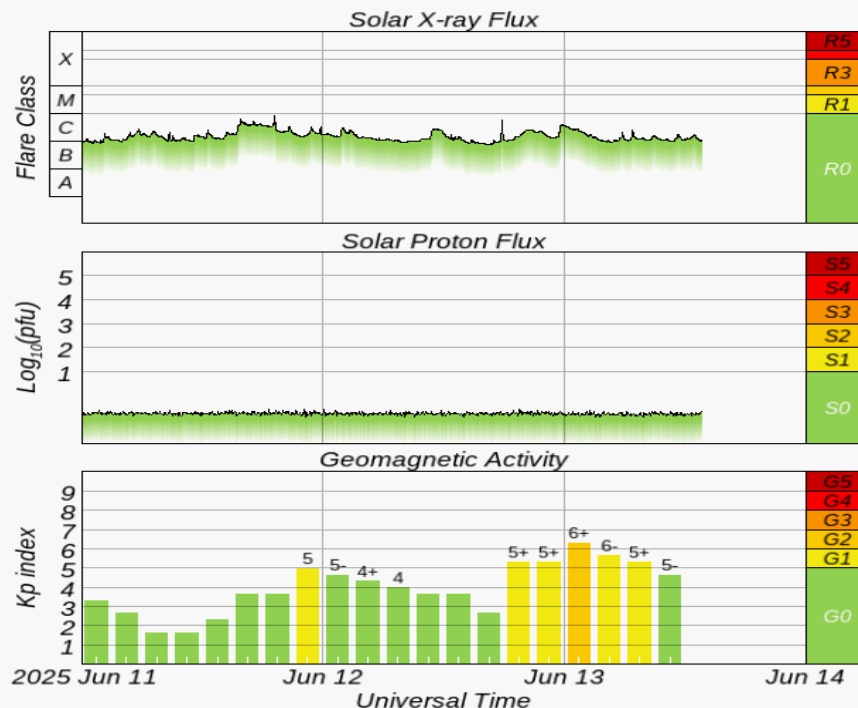
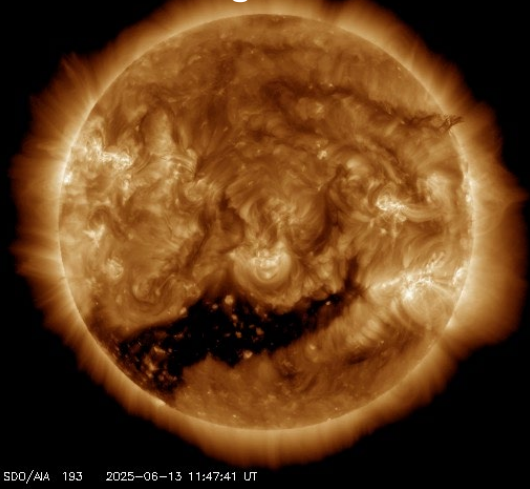
Space Weather

HMI Intensitygram



Current Sunspots

Earth-facing Coronal Holes



Solar Flare Risk	Active Watches & Warnings	Past 24 hours
M-class: 40%	Geomagnetic Storm: G2 Warning – 6/13; G2 Watch – 6/14	C5 Solar Flare
X-class: 5%	Radiation Storm: None	No Radio Blackouts

48-Hour Geomagnetic Forecast	
6/13	6/14
Max Kp= 6 (G2)	Max Kp= 6 (G2)
Chance of minor activity = 20% severe activity = 5%	Chance of minor activity = 40% severe activity = 25%

Space Weather: Large sunspots #4017 and #4115 will continue to pose a threat for strong (M-class) solar flares through the rest of the week and into the weekend. Minor to moderate (R1-R2) radio blackouts can be expected to accompany any M-class solar flares that develop. The pair of co-rotating solar winds struck the Earth's geomagnetic field earlier than intended, sparking moderate (G2) geomagnetic storms earlier today. Additional activity from the elevated solar wind conditions could lead to strong (G3) geomagnetic storms, but regardless a G2 Warning is in effect through today. Elevated solar winds will continue through the weekend leading to additional geomagnetic storming activity, and a G2 Watch remains in place for Saturday. Unsettled to active geomagnetic conditions will likely return on Sunday. The overall space threat to Florida is low.



SWO Communications Systems & Contact Information

Equipment	Contact	Status	Comments
Phone:	800-320-0519, 850-815-4001, 850-591-0071 (Backup Cell)	Operational	
Backup Landline:	850-487-3234, 850-487-3228	Operational	
Fax:	850-815-4979	Operational	
Email:	SWP@em.myflorida.com	Operational	
SWO Tracker:	https://apps.floridadisaster.org/SWO/	Operational	
SLERS:	DEM Statewide	Operational	
FNARS:	WGY974	Operational	
Federal NAWAS:	State Watch Office	Operational	
EMnet Message:	FL.000- State Watch Office	Operational	
EMnet Voice:	FL SWP- State Watch Office	Operational	
IPAWS:	LP.1 Stations via Emnet	Operational	
FIN:	SOFEOC	Operational	
Satellite Phones:	MSAT 888-890-5178 or Iridium 480-263-8838	Operational	
Website:	http://www.floridadisaster.org	Operational	

Users wishing to subscribe (approval pending) to this distribution list, register at:

https://public.govdelivery.com/accounts/FLDEM/subscriber/new?topic_id=Morning_SITREP