



Florida Division of Emergency Management State Watch Office

Morning Situation Report

Thursday, June 12, 2025



State Emergency Operations Center Activation Level

Level 2 Activation



SERT On-Call Personnel

Position	Personnel	Phone	Email
Operations Chief	Amy Godsey	(850) 519-8483	Amy.Godsey@em.myflorida.com
Watch Officer	Caitlyn Gillespie	(850) 688-2119	Caitlyn.Gillespie@em.myflorida.com
Duty Officer	Jay Griffin	(850) 524-4094	Kellen.Griffin-Jay@em.myflorida.com
Operations Officer- Day	Daniel Leader	(850) 815-4001	SWP@em.myflorida.com
Operations Officer- Swing	Zachary Remante	(850) 815-4001	SWP@em.myflorida.com
Operations Officer- Night	Jim Lawhon	(850) 815-4001	SWP@em.myflorida.com
Meteorologist	Caitlyn Gillespie	(850) 688-2119	Caitlyn.Gillespie@em.myflorida.com
Plans Chief	Kaylynn Perry	(850) 254-5657	Plans_Command@em.myflorida.com
Logistics Chief	Christina Goetzman	(850) 519-8581	Christina.Goetzman@em.myflorida.com
Human Services Director	Pam Hughes	(850) 528-5638	Pamela.Hughes@em.myflorida.com
Emergency Services	Tim Kenyon	(850) 591-7732	Tim.Kenyon@em.myflorida.com
Infrastructure Branch Director	Christina Goetzman	(850) 519-8581	Christina.Goetzman@em.myflorida.com
ESF 8 On-Call	Brandon Gore	(866) 786-4673	DLDOHDutyOfficers@flhealth.gov
Public Information Officer	Stephanie Hartman	(850) 570-3053	Stephanie.Hartman@em.myflorida.com
DEM Finance and Admin	Jeremy Smith	(850) 273-1273	Jeremy.Smith@em.myflorida.com



Response Regional Coordination Team



Team	County Location	Visits
Region 1: Jim Roberts	Out of Service	Leave (See Coverage)
Region 2: Enrique Gaston	Leon	Response Coordinator Onboarding Orientation
Region 3: Glen Hammers	Suwannee	Hurricane Season Kickoff Meeting
Region 4: Tara Kostich	Flagler	EM Meeting / Regional IMT Meeting
Region 5: Austin Beeghly	Orange	FTEM
Region 6: Paul Siddall	Orange	FTEM
Region 7: Kathryn Hollenbeck	Orange	FTEM
Region 8: Mason Kozac	Orange	FTEM
Region 9: Vacant	N/A	N/A
Region 10: Claudia Baker	Orange	FTEM

Region 1 Coverage Provided by Response Coordinator 3
Region 8 Coverage Provided by Response Coordinator 7
Region 9 Coverage Provided by Response Coordinator 6
Region 10 Coverage Provided by Response Coordinator 7

Status
Normal Operations
Out of Service / Unavailable



Recovery Regional Coordination Team

Team	County Location	Status / Activities
Region 1: Allison Blevins	In State	FTEM / Return Trave to Region
Region 2: Justin Lazzara	Leave	See Coverage
Region 3: Vacant	N/A	See Coverage
Region 4: Joshua Saunders	In State	FTEM / Return Trave to Region
Region 5: Elizabeth Caison	Orange	FTEM
Vacant	N/A	See Coverage
Region 6: Vacant		
Region 7: Antonio Zapata	Orange	FTEM
Region 8: Ja-Pheth Butler-Miller	Orange	FTEM
Region 9: Jacob Ginsberg	Orange	FTEM
Region 10: Vacant	N/A	See Coverage

Region 2 Coverage Provided by Recovery Coordinator 4

Region 3 Coverage Provided by Recovery Coordinator 2 & 4

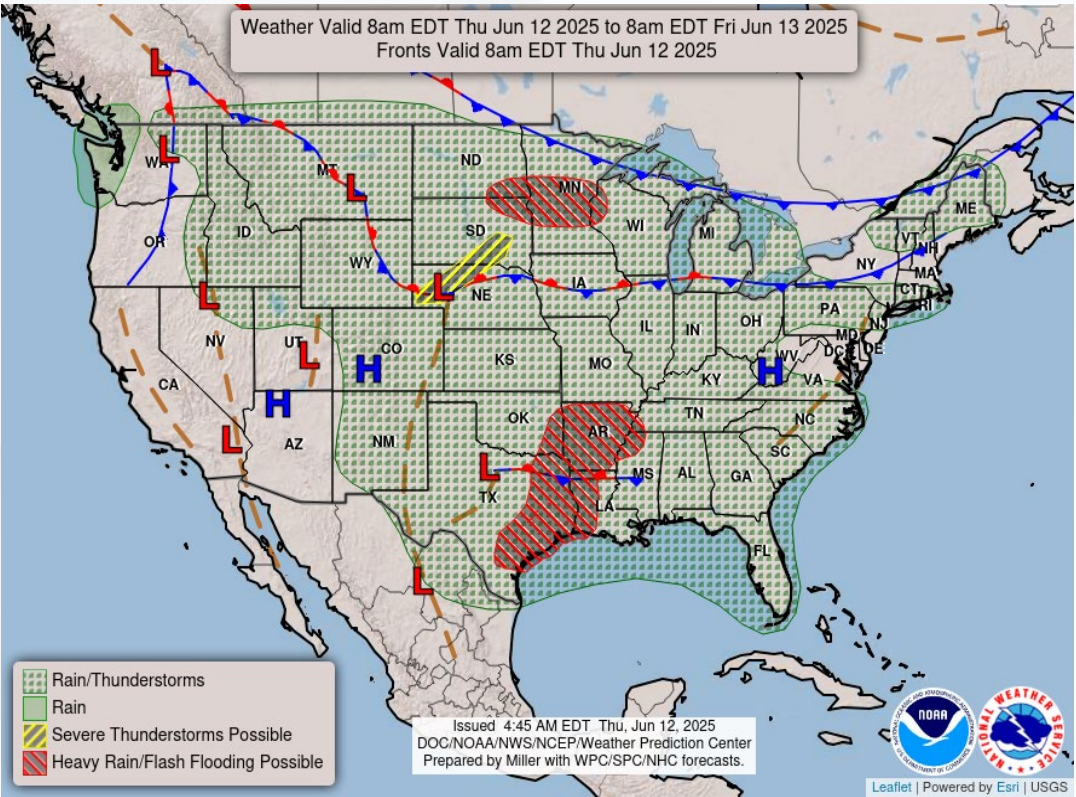
Region 6 Coverage Provided by Recovery Coordinator 5

Region 10 Coverage Provided by Recovery Coordinator 8

Status
Normal Operations
In Region / Delayed Response
Deployed / Delayed Response
Out of Service / Unavailable

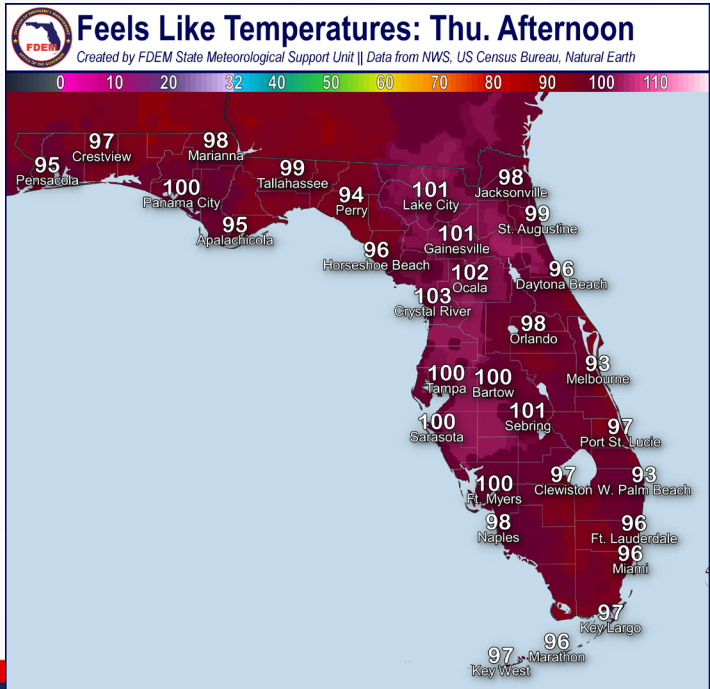
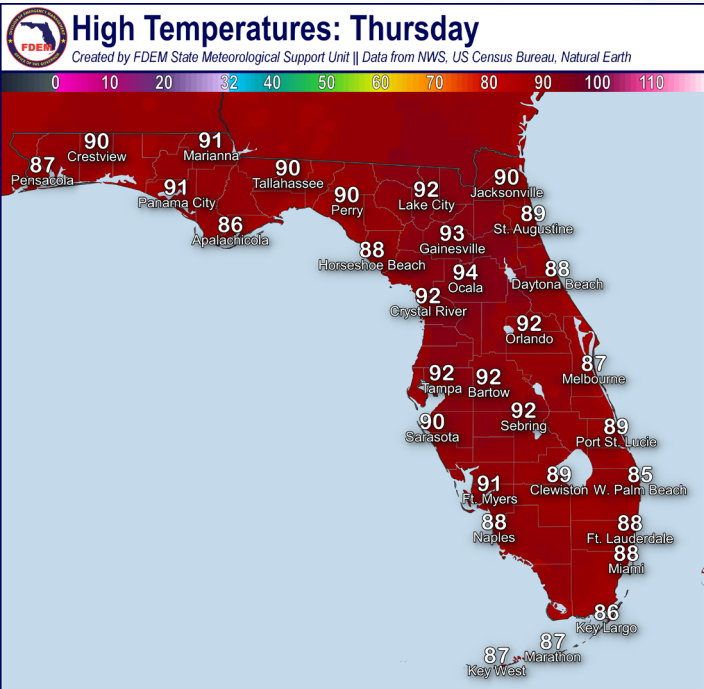


Meteorology Summary



Today's Weather Map

T threat	R1	R2	R3	R4	R5	R6	R7	R8	R9	R10
Lightning	M	M	H	H	H	H	M	M	M	M
Tornado										
Damaging Wind										
Hail										
Flash Flooding	L		L	L		L	L			
Excessive Heat	L	L	M	M	L	M	L	L	L	L
Wildfire										
Fog (Overnight)										
Rip Currents	M	M	L	M	M	L		M	L	M
Lake Okeechobee Elevation	11.14 ft. (2.02 ft. <u>Below</u> Normal)									
Keetch-Byram Drought Index	349 (-15) on a scale from 0 (very moist) to 800 (very dry)									





Meteorology Summary

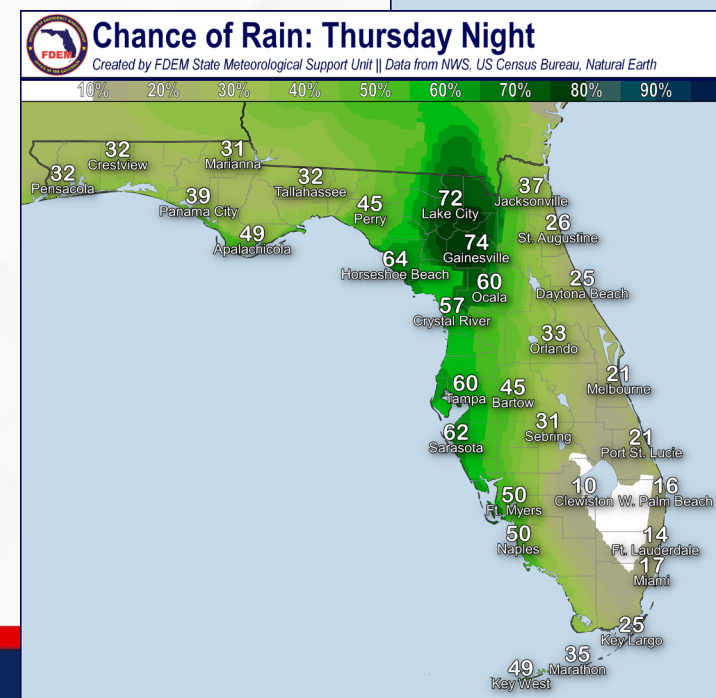
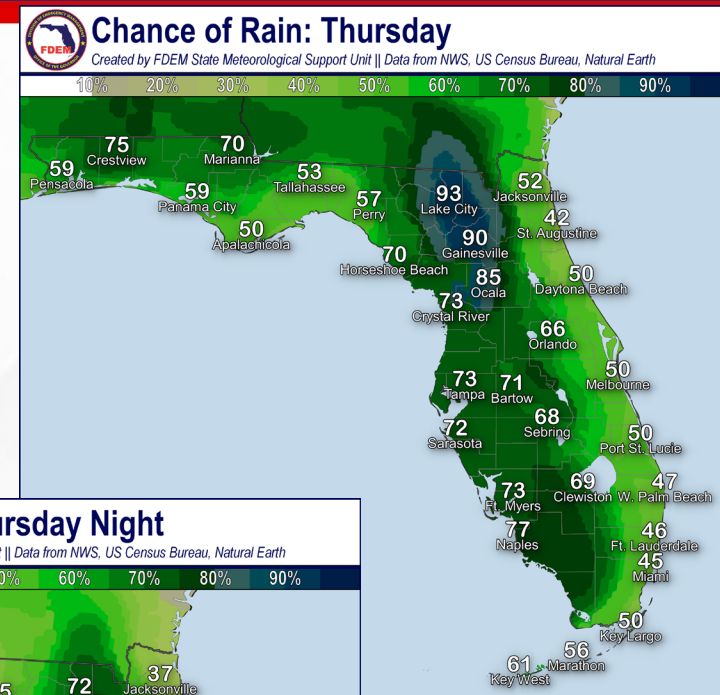
Statewide Overview, Next 24 Hours:

Spotty showers have already begun to move onshore along portions of the Treasure Coast this morning from the nearby coastal waters. As daytime heating continues and the sea breeze moves inland throughout the afternoon, scattered to numerous showers and thunderstorms can be expected to develop (50-90% chance of rain). Southeasterly winds will continue to transport tropical moisture across the state, which will help aid shower and thunderstorm development as well. **Saharan Dry Air** remains over the Bahamas but will begin to approach South Florida later today; however, it may keep overall thunderstorm activity more scattered in nature as opposed to the last few days. **Embedded strong to severe thunderstorms** will be possible during the peak heating hours of days, with lightning, gusty winds and torrential downpours all possible. There is no organized risk for flash flooding throughout the state; however, multiple rounds of heavy downpours or any slow-moving thunderstorms over urban and low-lying/poor drainage areas could lead to instances of **flash flooding and ponding of water**.

Warm and seasonable conditions can be expected as high temperatures will reach the upper 80s to middle 90s throughout the state. Muggy conditions can also be expected as **feels-like temperatures** will climb into the **upper 90s to triple digits (100-105-degrees)**, with the warmest values along the Suwannee Valley and West-Central Florida.

As the sea breeze moves back towards the coastal waters, shower and thunderstorm activity will also move back towards the coastal waters late in the evening and overnight. Lack of daytime heating processes will also help for shower and thunderstorm activity to dissipate, but some lingering showers or an embedded thunderstorm cannot be ruled out along the coastline and adjacent coastal waters overnight (25-45% chance of rain).

Low temperatures will fall into the 70s throughout the state, with low temperatures in the lower 80s across the Florida Keys.

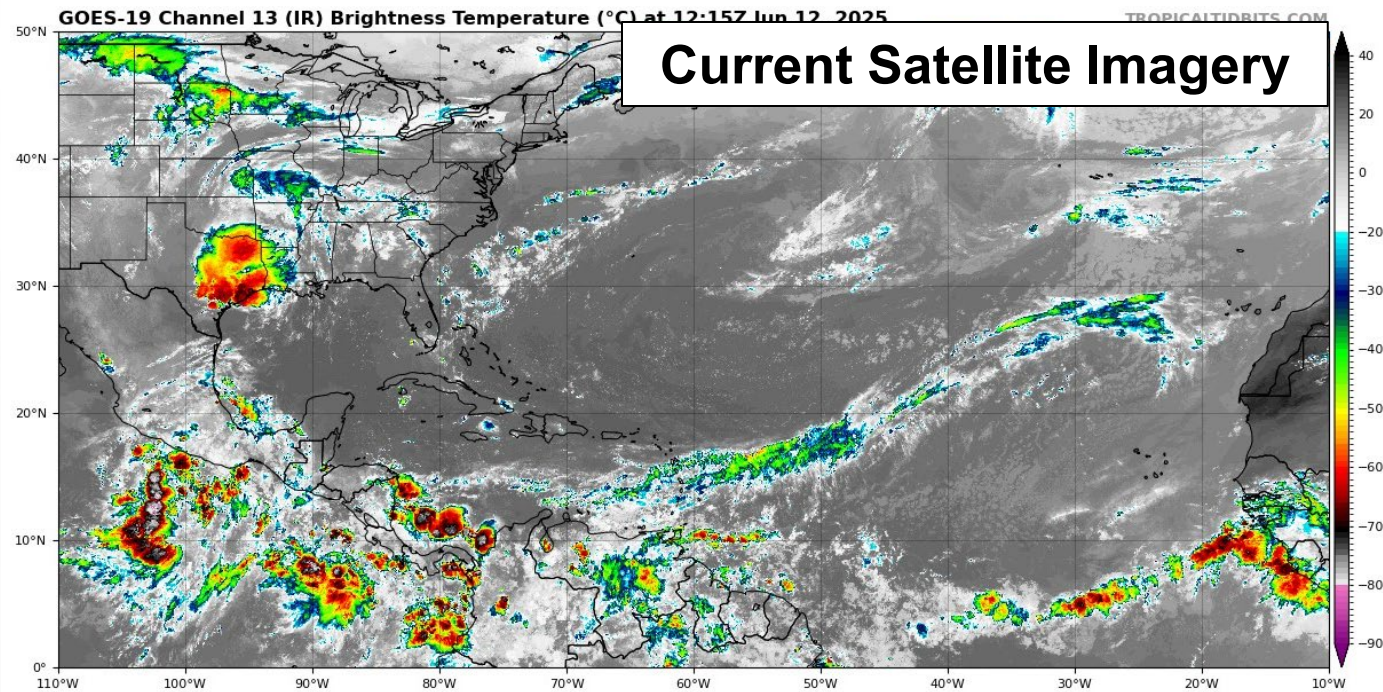
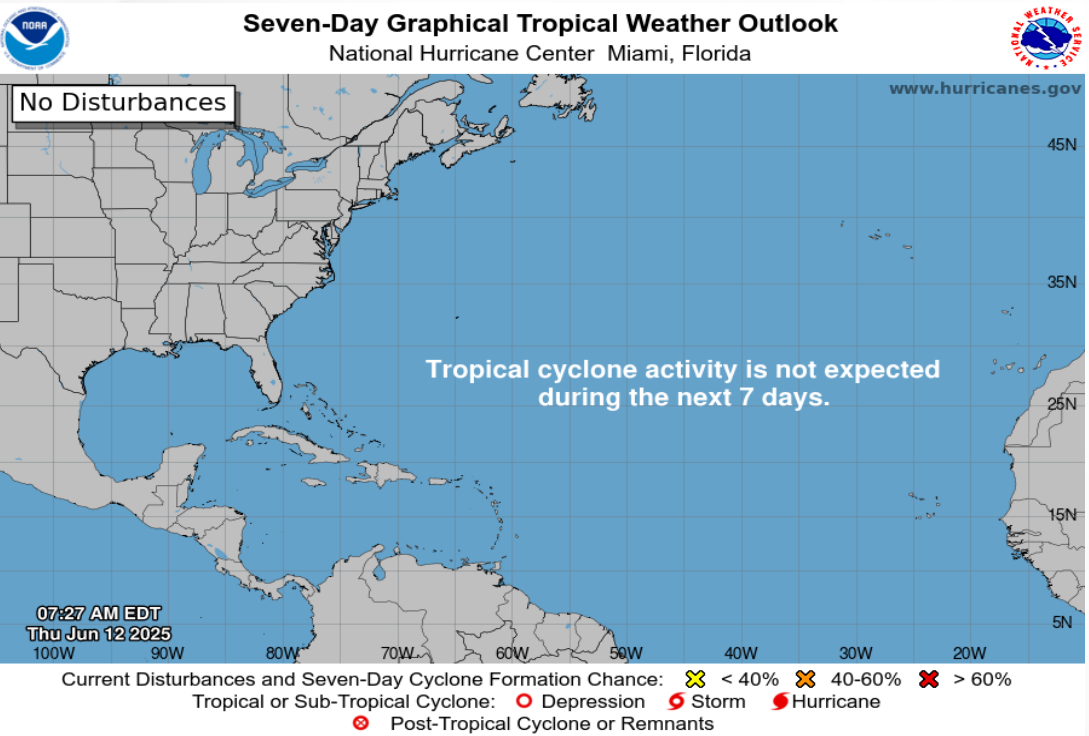




Tropical Weather

For the latest on the tropics, please visit the National Hurricane Center (NHC) at www.hurricanes.gov.

Tropical development is not expected over the next 7 days across the Atlantic basin.





Coastal Hazards & Hydrology

Rip Currents: A **moderate risk for rip currents** returns to the Panhandle and persists for Atlantic Coast beaches. West Coast beaches will continue to see a low risk for rip currents. For the latest Rip Current Outlook, visit www.weather.gov/beach.

Marine Hazards: Calm marine conditions and seas will remain near 1' for all Gulf and West Coast beaches. East Coast beaches will see slightly elevated marine conditions with wave heights near 1-3'. *Thunderstorms may create rough surf and choppy waters.*

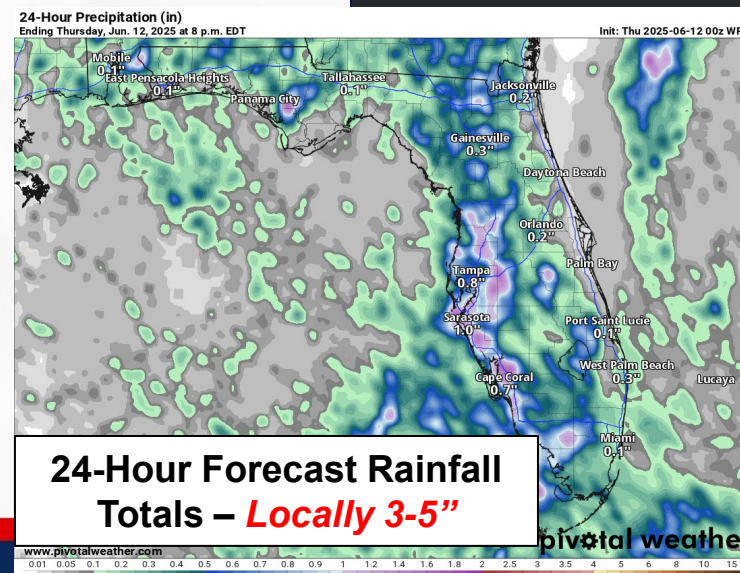
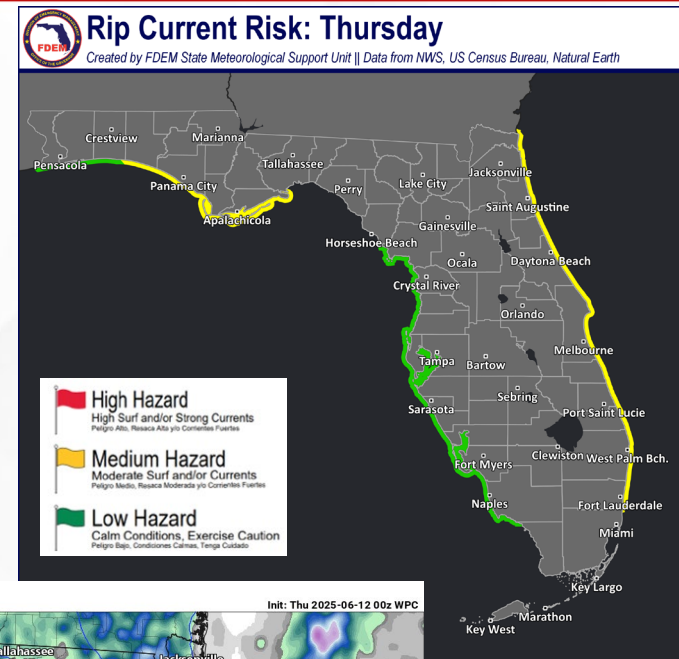
Red Tide has been not been observed along any Florida coastline over the past week (valid 6/6).

Coastal Flooding: There is no risk for coastal flooding today.

Flash Flooding: Tropical moisture continues to be pulled northward across the state, which will help to aid daily shower and thunderstorm activity throughout the day. Scattered to numerous showers and thunderstorms will allow for locally heavy and intense downpours at times, especially during the afternoon and evenings. There is no organized risk for flash flooding today; however, repeated rounds of heavy rainfall or slow-moving thunderstorms could lead to **instances of flash flooding and ponding of water**, especially for urban and low-lying/poor drainage areas. Areas that have already seen recently heavy rainfall over the last few days could see an **earlier onset** for possible flash flooding with any additional heavy downpours today over those same areas. Rainfall totals of 1-2" can be expected throughout the state, with **locally higher totals** upwards of 3-5" possible.

Riverine Flooding: Following recent heavy rainfall from repeated rounds of shower and thunderstorm activity, a handful of Panhandle rivers and creeks have seen water levels rise near or into flood stage. The [Big Coldwater Creek near Milton](#) remains within Action Stage (bank-full) as water levels continue to decline. The [Escambia River near Century](#) has crested near minor flood stage, but water levels are already quickly falling through Action Stage (bank-full). There are no additional riverine concerns at this time. For more information, visit the [River Forecast Center](#).

Lake Okeechobee's average elevation is 11.14 feet, which is within the operational band and is 2.02 feet below normal for this time of year.





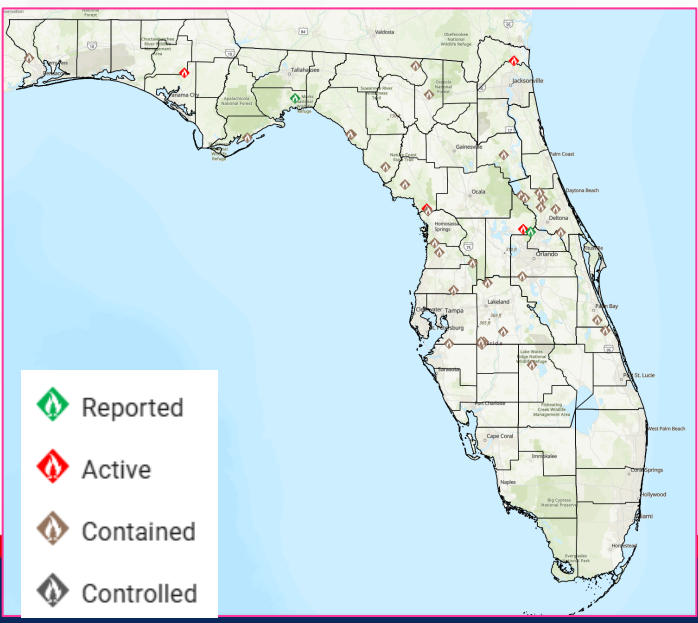
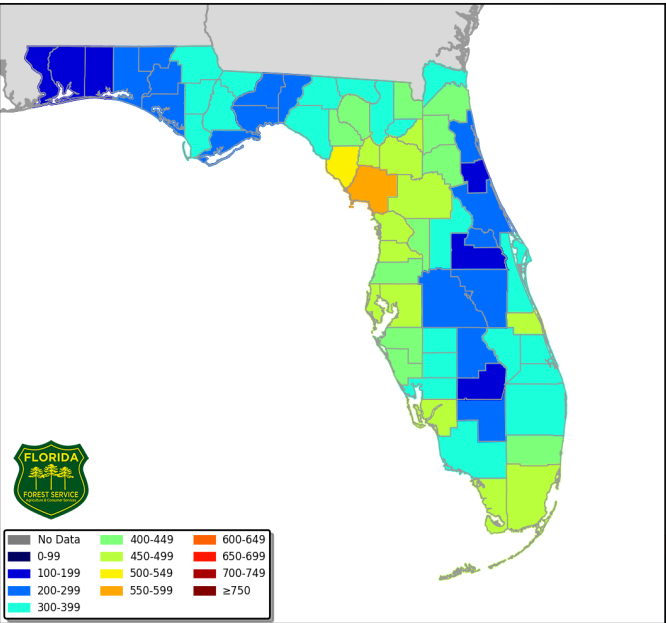
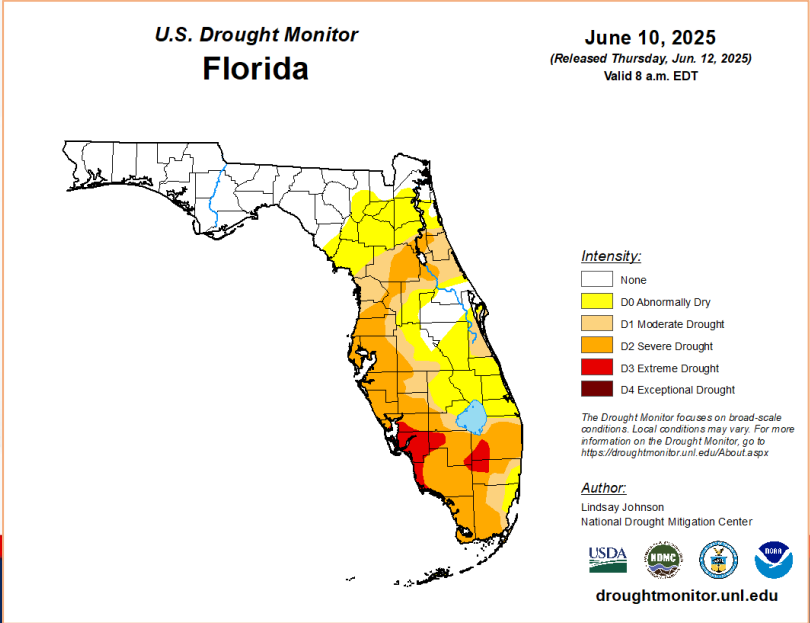
Drought & Fire Weather

Fire Weather: Plenty of tropical moisture in place will continue to fuel scattered to widespread shower and thunderstorm development across the state throughout the day. Saharan Dry Air will begin to approach South Florida, which may keep activity more scattered in nature compared to the last few days. Thunderstorms throughout the state will be capable of producing frequent lightning and erratic winds that may ignite or further spread existing fires. Daily rainfall continues to slowly help with drought conditions across the Peninsula. According to the [Florida Forest Service](#), there are 39 active wildfires across the state burning approximately 1,872 acres.

Drought: Beneficial rainfall across the Florida Panhandle and Big Bend over the last few days has led to the removal of the lingering Abnormally Dry (emerging drought) conditions for this week's update. Widespread rainfall throughout the Peninsula was kept to a minimum, even though some areas received plentiful and beneficial rainfall locally. As a result, minimal changes were made to drought conditions throughout the Peninsula despite increased daily rain chances. Portions of South Florida, mostly along the Southwest Florida coastline and interior portions of Southeast Florida, remain within **Extreme Drought (level 4 of 5)** conditions. Longer-term rainfall deficits continue to show rainfall totals throughout the Peninsula near 1-3" below normal over the last 60 days. Low streamflow also continues for portions of the Everglades and portions of Lake Okeechobee despite recent rainfall.

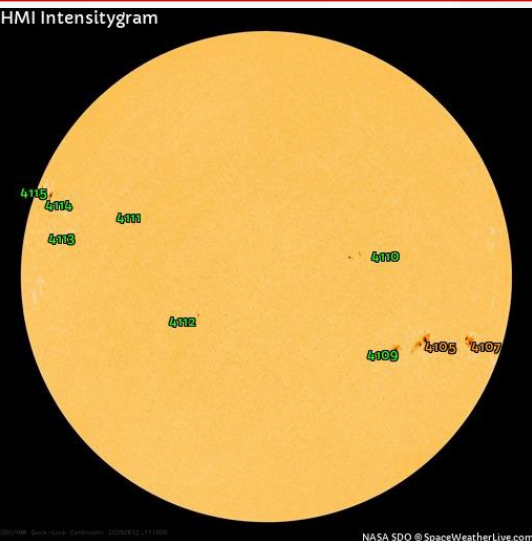
The **Keetch-Byram Drought Index** average for Florida is **349 (-15)** on a scale from 0 (very wet) to 800 (very dry). There are **2** Florida counties (Dixie and Levy) with an average KBDI over 500 (drought/increased fire danger).

Keetch Byram Drought Index (KBDI)
County Averages for June 11, 2025

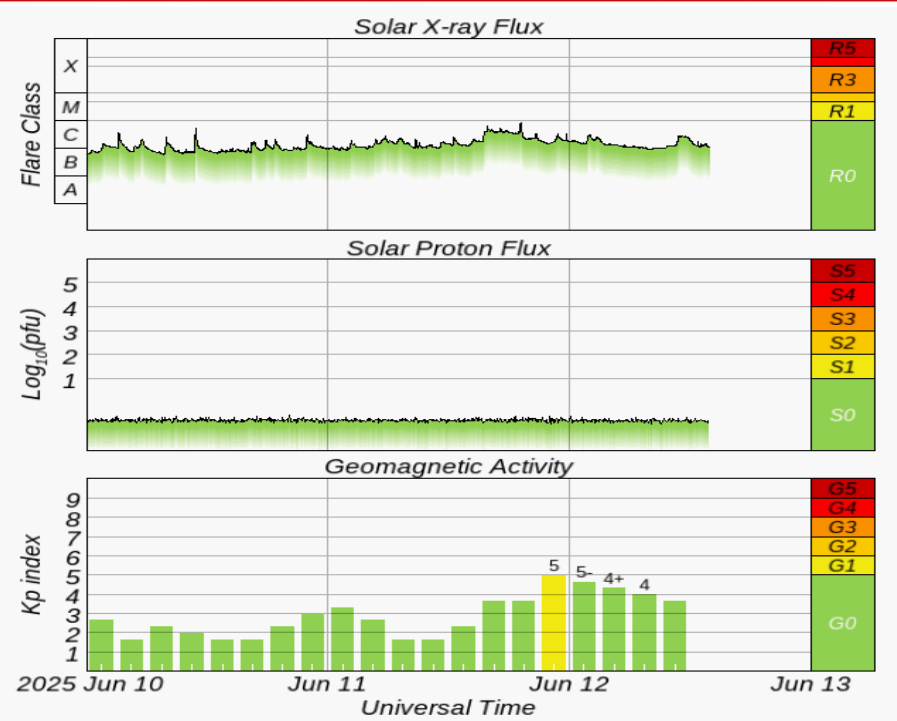
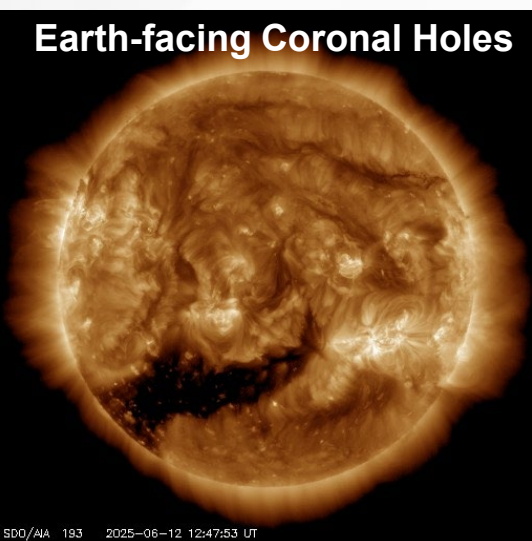




Space Weather



Current Sunspots



Solar Flare Risk	Active Watches & Warnings	Past 24 hours
M-class: 40%	Geomagnetic Storm: G2 Watch – 6/14	C8 Solar Flare
X-class: 5%	Radiation Storm: None	No Radio Blackouts

48-Hour Geomagnetic Forecast	
6/12	6/13
Max Kp= 5 (G1)	Max Kp= 6 (G2)
Chance of minor activity = 5% severe activity = 1%	Chance of minor activity = 20% severe activity = 5%

Space Weather: Strong (M-class) solar flare probabilities have increased slightly as sunspots #4105 and #4107 continues to grow and maintains a magnetic field that could lead to M-class solar flares. There is also a slight chance for significant (X-class) solar flares through the next couple of days. Minor to moderate (R1-R2) radio blackouts can be expected for M-class solar flares and strong (R3) radio blackouts can be expected for X-class solar flares. Current Coronal Hole High Solar Stream (CH HSS) winds will continue through today before waning tomorrow (6/13). A pair of co-rotating solar winds flowing from the southwestern coronal hole will approach Earth beginning tomorrow and continuing into the weekend. Minor (G1) geomagnetic storming will be possible through today with ongoing CH HSS conditions. An increase in geomagnetic activity can be anticipated later this week and into the weekend with the approaching co-rotating solar winds, and a G2 (moderate) Storm Watch has been issued for Saturday (6/14). The overall space threat to Florida remains low.



SWO Communications Systems & Contact Information

Equipment	Contact	Status	Comments
Phone:	800-320-0519, 850-815-4001, 850-591-0071 (Backup Cell)	Operational	
Backup Landline:	850-487-3234, 850-487-3228	Operational	
Fax:	850-815-4979	Operational	
Email:	SWP@em.myflorida.com	Operational	
SWO Tracker:	https://apps.floridadisaster.org/SWO/	Operational	
SLERS:	DEM Statewide	Operational	
FNARS:	WGY974	Operational	
Federal NAWAS:	State Watch Office	Operational	
EMnet Message:	FL.000- State Watch Office	Operational	
EMnet Voice:	FL SWP- State Watch Office	Operational	
IPAWS:	LP.1 Stations via Emnet	Operational	
FIN:	SOFEOC	Operational	
Satellite Phones:	MSAT 888-890-5178 or Iridium 480-263-8838	Operational	
Website:	http://www.floridadisaster.org	Operational	

Users wishing to subscribe (approval pending) to this distribution list, register at:

https://public.govdelivery.com/accounts/FLDEM/subscriber/new?topic_id=Morning_SITREP