



Florida Division of Emergency Management State Watch Office

Morning Situation Report

Wednesday, June 11, 2025



State Emergency Operations Center Activation Level

Level 2 Activation



SERT On-Call Personnel

Position	Personnel	Phone	Email
Operations Chief	Amy Godsey	(850) 519-8483	Amy.Godsey@em.myflorida.com
Watch Officer	Caitlyn Gillespie	(850) 688-2119	Caitlyn.Gillespie@em.myflorida.com
Duty Officer	Jeremy Whitt	(850) 755-8521	Jeremy.Whitt@em.myflorida.com
Operations Officer- Day	Caleb Pitts	(850) 815-4001	SWP@em.myflorida.com
Operations Officer- Swing	Kaya Dungey	(850) 815-4001	SWP@em.myflorida.com
Operations Officer- Night	Jim Lawhon	(850) 815-4001	SWP@em.myflorida.com
Meteorologist	Kennedy Tartt	(850) 567-6368	Kennedy.Tartt@em.myflorida.com
Plans Chief	Kaylynn Perry	(850) 254-5657	Plans_Command@em.myflorida.com
Logistics Chief	Christina Goetzman	(850) 519-8581	Christina.Goetzman@em.myflorida.com
Human Services Director	Pam Hughes	(850) 528-5638	Pamela.Hughes@em.myflorida.com
Emergency Services	Tim Kenyon	(850) 591-7732	Tim.Kenyon@em.myflorida.com
Infrastructure Branch Director	Christina Goetzman	(850) 519-8581	Christina.Goetzman@em.myflorida.com
ESF 8 On-Call	Brandon Gore	(866) 786-4673	DLDOHDutyOfficers@flhealth.gov
Public Information Officer	Stephanie Hartman	(850) 570-3053	Stephanie.Hartman@em.myflorida.com
DEM Finance and Admin	Jeremy Smith	(850) 273-1273	Jeremy.Smith@em.myflorida.com



Response Regional Coordination Team



Team	County Location	Visits
Region 1: Jim Roberts	Out of Service	Leave (See Coverage)
Region 2: Willie Bouie	Leon	Response Coordinator Onboarding Orientation
Region 3: Glen Hammers	Columbia	Office Admin
Region 4: Tara Kostich	Clay	Office Admin / CISA Active Shooter Prep
Region 5: Austin Beeghly	Orange	FTEM
Region 6: Paul Siddall	Hillsborough	Office Admin
Region 7: Kathryn Hollenbeck	Highlands	HCC Meeting / County Hurricane Kickoff Meeting
Region 8: Mason Kozac	St Lucie, Orange	Travel to FTEM (See Coverage)
Region 9: Vacant	N/A	N/A
Region 10: Claudia Baker	Miami-Dade, Orange	USCG MRO Planning Meeting / Travel to FTEM (See Coverage)

Region 1 Coverage Provided by Response Coordinator 3
Region 8 Coverage Provided by Response Coordinator 7
Region 9 Coverage Provided by Response Coordinator 6
Region 10 Coverage Provided by Response Coordinator 7

Status

Normal Operations

Out of Service / Unavailable



Recovery Regional Coordination Team

Team	County Location	Status / Activities
Region 1: Allison Blevins	Orange	FTEM
Region 2: Justin Lazzara	Orange	FTEM
Region 3: Vacant	N/A	See Coverage
Region 4: Joshua Saunders	Orange	FTEM
Region 5: Elizabeth Caison	Orange	FTEM
Vacant	N/A	See Coverage
Region 6: Vacant		
Region 7: Antonio Zapata	Orange	FTEM
Region 8: Ja-Pheth Butler-Miller	Orange	FTEM
Region 9: Jacob Ginsberg	Orange	FTEM
Region 10: Vacant	N/A	See Coverage

Region 3 Coverage Provided by Recovery Coordinator 2 & 4

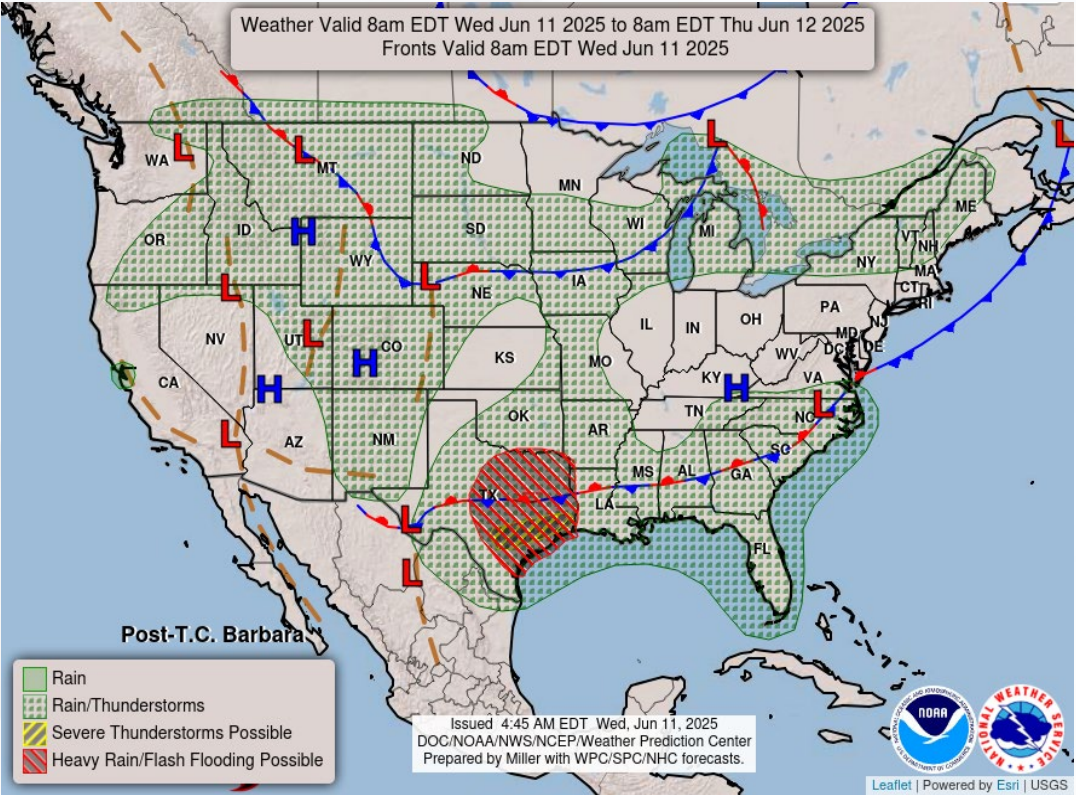
Region 6 Coverage Provided by Recovery Coordinator 5

Region 10 Coverage Provided by Recovery Coordinator 8

Status
Normal Operations
In Region / Delayed Response
Deployed / Delayed Response
Out of Service / Unavailable

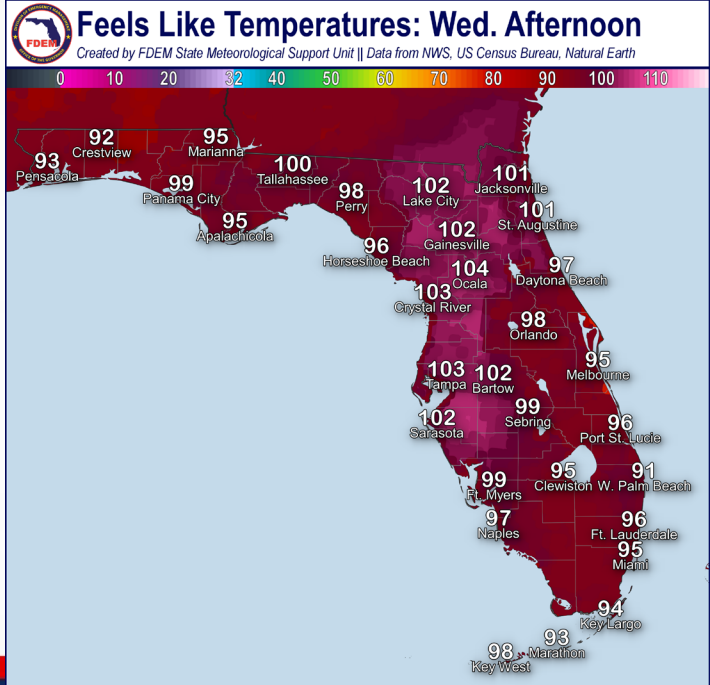
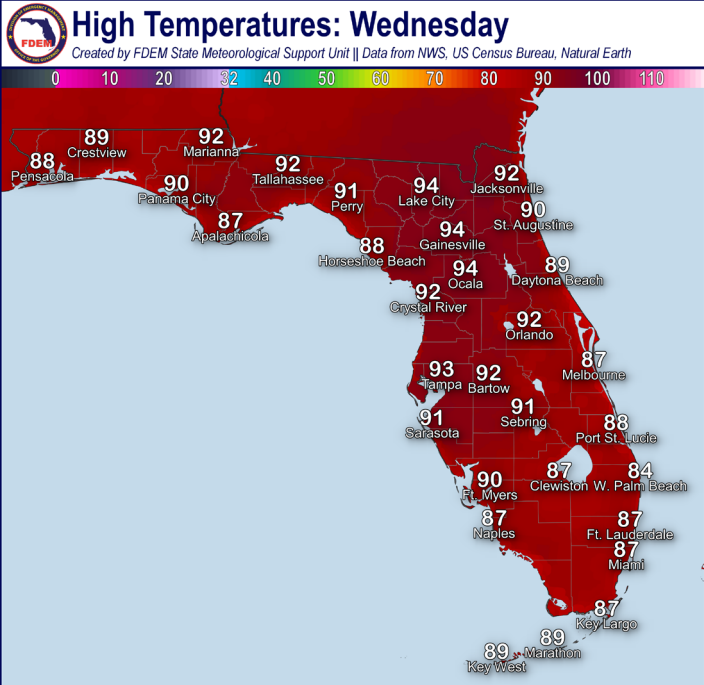


Meteorology Summary



Today's Weather Map

T threat	R1	R2	R3	R4	R5	R6	R7	R8	R9	R10
Lightning	M	M	H	H	M	H	H	M	M	M
Tornado										
Damaging Wind										
Hail										
Flash Flooding	L	L	L	L	L	L	L	L	L	L
Excessive Heat	L	L	M	M	L	M	L	L	L	L
Wildfire										
Fog (Overnight)										
Rip Currents	M	M	L	M	M	L		M	L	M
Lake Okeechobee Elevation	11.15 ft. (2.00 ft. <u>Below Normal</u>)									
Keetch-Byram Drought Index	365 (-9) on a scale from 0 (very moist) to 800 (very dry)									





Meteorology Summary

Statewide Overview, Next 24 Hours:

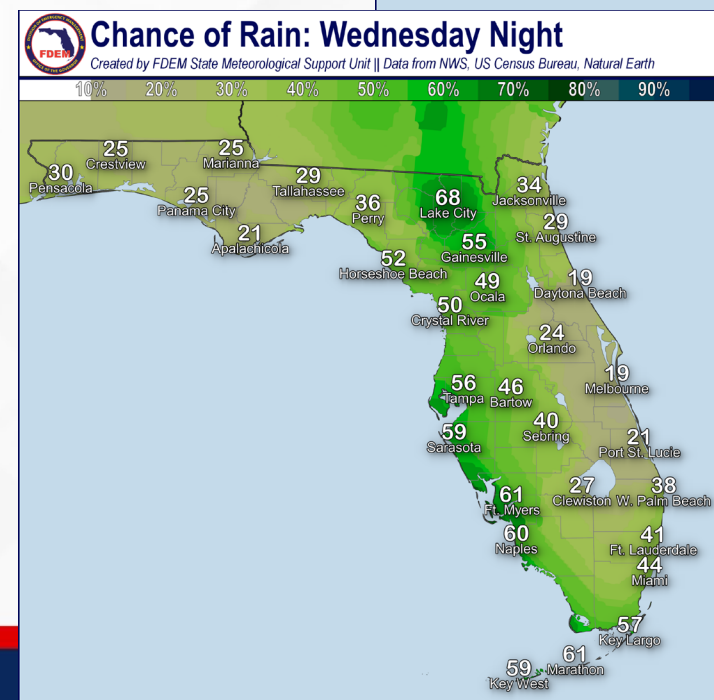
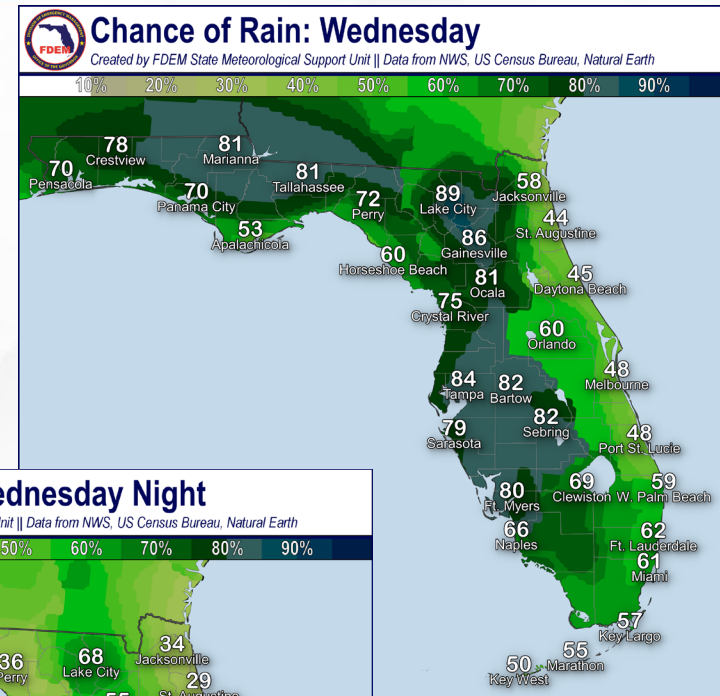
After a brief lull in activity, showers and thunderstorms along the South Florida coastline have already begun to redevelop and push inland this morning.

A surge of tropical moisture flowing across the Sunshine State towards a stalled frontal boundary over the Southeast U.S. will give way to scattered to widespread showers and thunderstorms developing throughout the day (50-90% chance of rain). Plenty of tropical moisture and daytime heating will help aid shower and thunderstorm development throughout the day, leading to some **locally strong to severe thunderstorms** embedded within. These stronger thunderstorms will be capable of producing frequent lightning, gusty winds and torrential downpours at times. With widespread tropical moisture, instances of **flash flooding and ponding of water** within torrential downpours will be possible throughout the state, and the Weather Prediction Center (WPC) is outlooking a **Marginal Risk (level 1 of 4) for Flash Flooding**. Areas that have already seen recently heavy rainfall or multiple days of locally heavy downpours could see an **earlier onset** of possible flash flooding, especially for urban and low-lying/poor drainage areas.

Warm and muggy conditions can be expected to develop throughout the state this afternoon as high temperatures will reach the upper 80s to middle 90s. Feels-like temperatures will reach the **middle 90s to triple digits (100-107-degrees)**, with the warmest values throughout the Suwannee Valley and Nature Coast. Conditions will remain just below heat advisory criteria, but heat safety should continue to be practiced.

As the sea breeze shifts back offshore and daytime heating decreases, shower and thunderstorm activity will also begin to dissipate or move offshore during the late evening and early overnight hours. While mostly dry conditions can be expected to return overnight, there may be a few lingering showers or embedded thunderstorms along portions of the Big Bend into the early morning hours (20-35% chance of rain).

Low temperatures will fall into the 70s throughout the state overnight, with the Florida Keys only seeing low temperatures in the lower 80s.

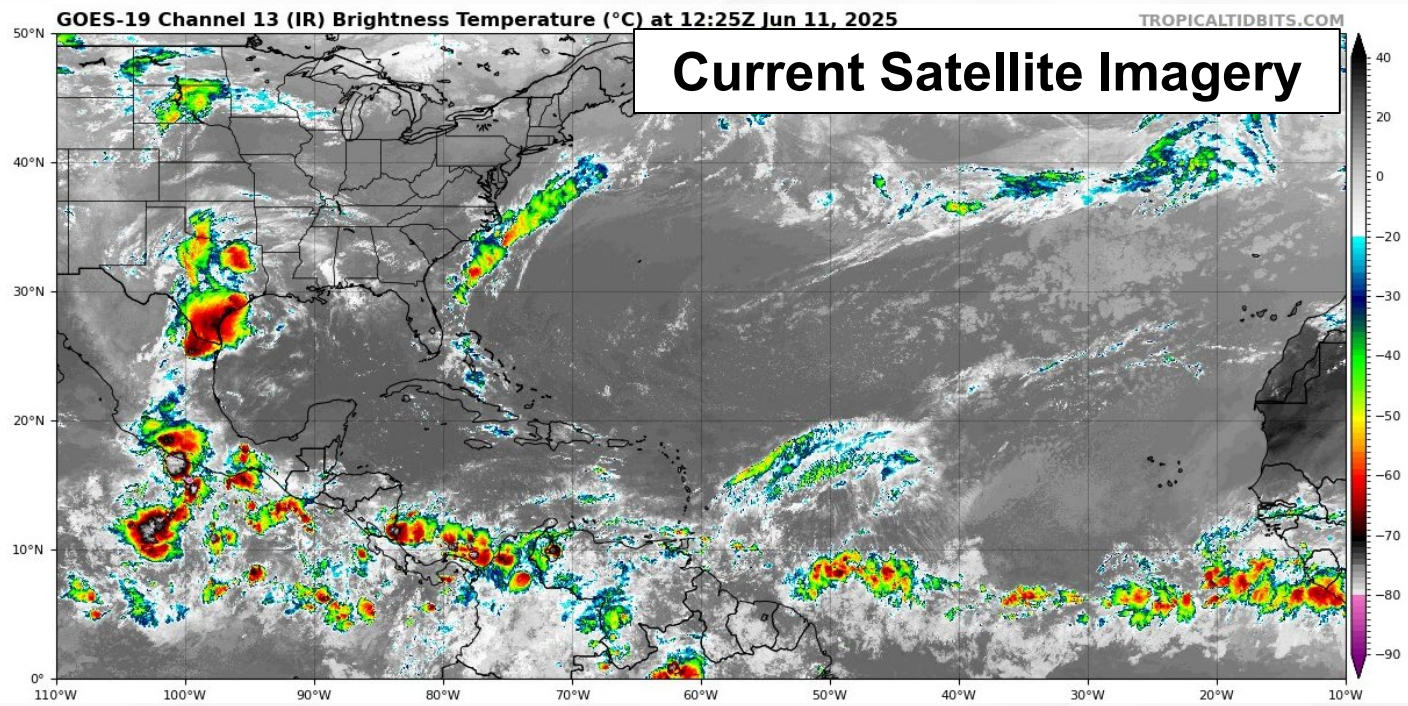
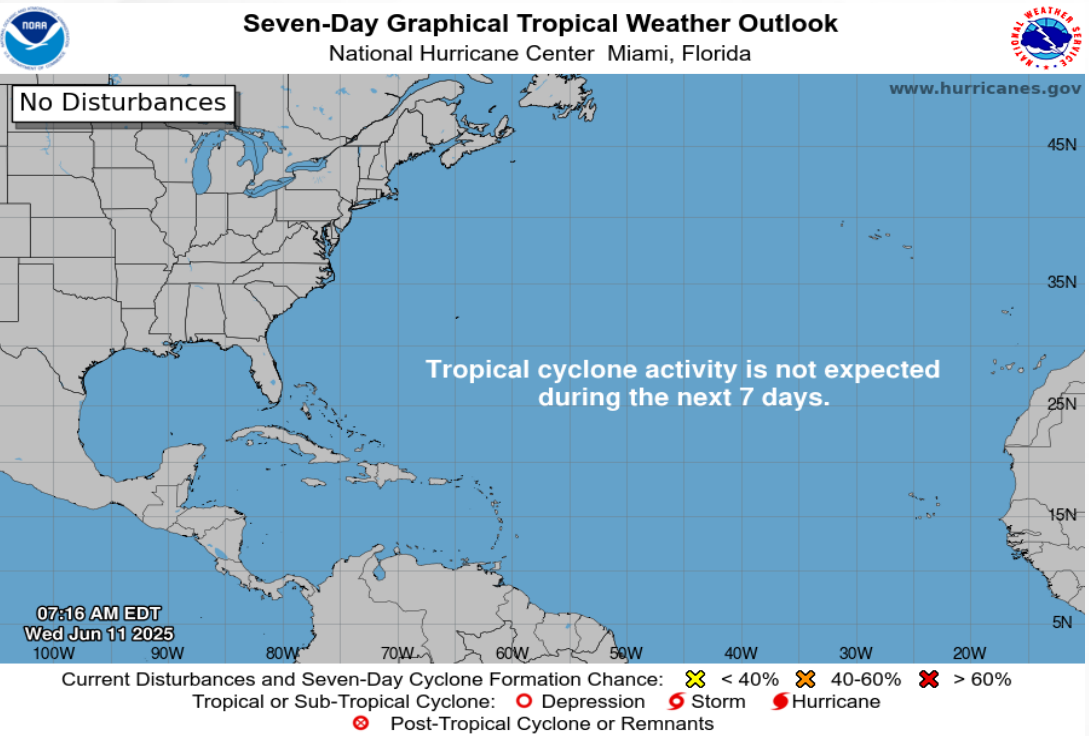




Tropical Weather

For the latest on the tropics, please visit the National Hurricane Center (NHC) at www.hurricanes.gov.

Tropical development is not expected over the next 7 days across the Atlantic basin.





Coastal Hazards & Hydrology

Rip Currents: A **moderate risk for rip currents** returns to the Panhandle, and persists for Atlantic Coast beaches. West Coast beaches will continue to see a low risk for rip currents. For the latest Rip Current Outlook, visit www.weather.gov/beach.

Marine Hazards: Calm marine conditions and seas will remain near 1' for all Gulf and West Coast beaches. East Coast beaches will see slightly elevated marine conditions with wave heights near 1-3'. *Thunderstorms may create rough surf and choppy waters.*

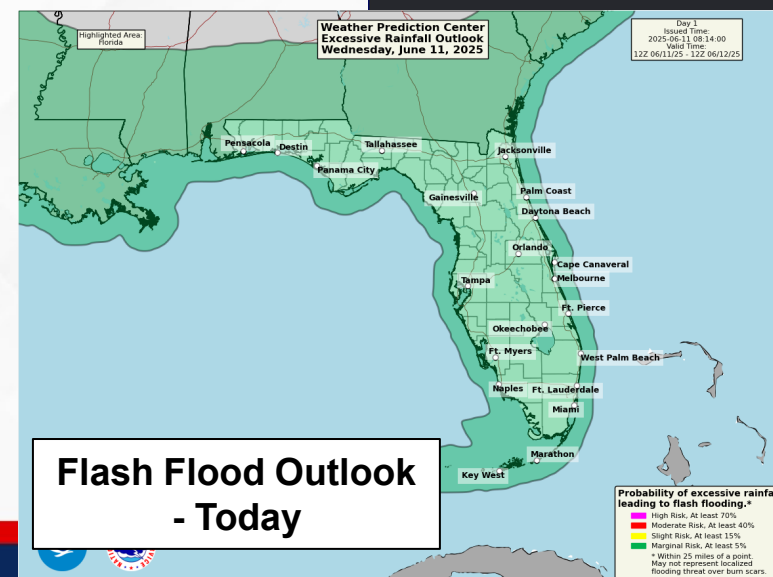
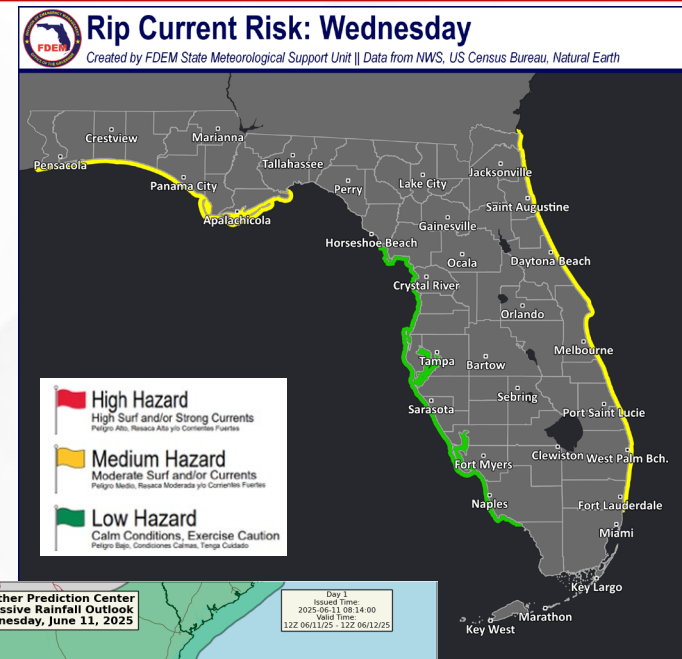
Red Tide has been not been observed along any Florida coastline over the past week (valid 6/6).

Coastal Flooding: There is no risk for coastal flooding today.

Flash Flooding: Widespread tropical moisture spreading across the state will give way to scattered to numerous showers developing throughout the day. These showers and thunderstorms will be capable of producing intense and torrential downpours, which could lead to **flash flooding or ponding of water**. The Weather Prediction Center (WPC) is outlooking a **Marginal Risk (level 1 of 4) for Flash Flooding** across the state today as a result. Areas that have already seen locally heavy rainfall over the last couple of days may see an earlier onset of flash flooding with any additional heavy repeated rounds of rainfall over the same area. Rainfall totals of 1-3" can be expected throughout the state, with **locally higher totals** upwards of 4-5" possible.

Riverine Flooding: Following recent heavy rainfall from repeated rounds of shower and thunderstorm activity, a handful of Panhandle rivers and creeks have seen water levels rise near or into flood stage. A **River Flood Warning** continues for the [Big Coldwater Creek near Milton](#) as water levels have crested within **minor flood stage**, but the waterway is now within Action Stage (bank-full) as water levels decline. [Escambia River near Century](#) is currently within Action Stage (bank-full) but is forecast to rise into **minor flood stage** later today or early Thursday, and a **River Flood Warning** has been issued. There are no additional riverine concerns at this time. For more information, visit the [River Forecast Center](#).

Lake Okeechobee's average elevation is 11.15 feet, which is within the operational band and is 2.00 feet below normal for this time of year.





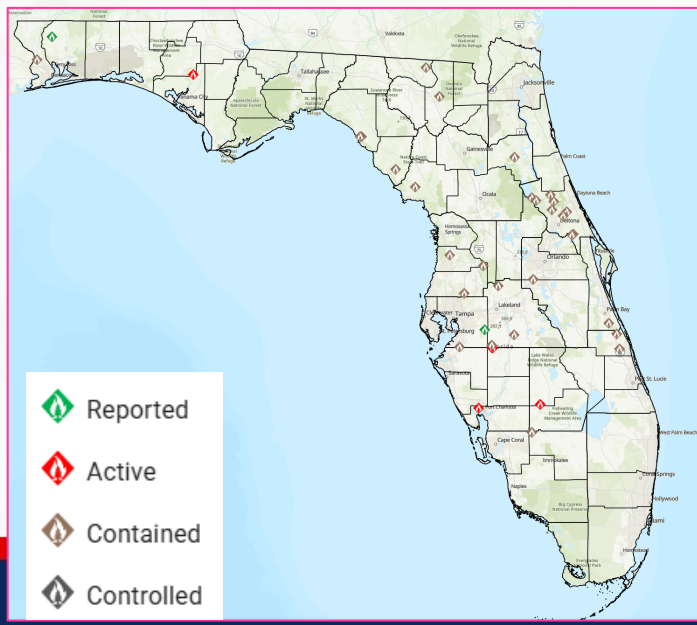
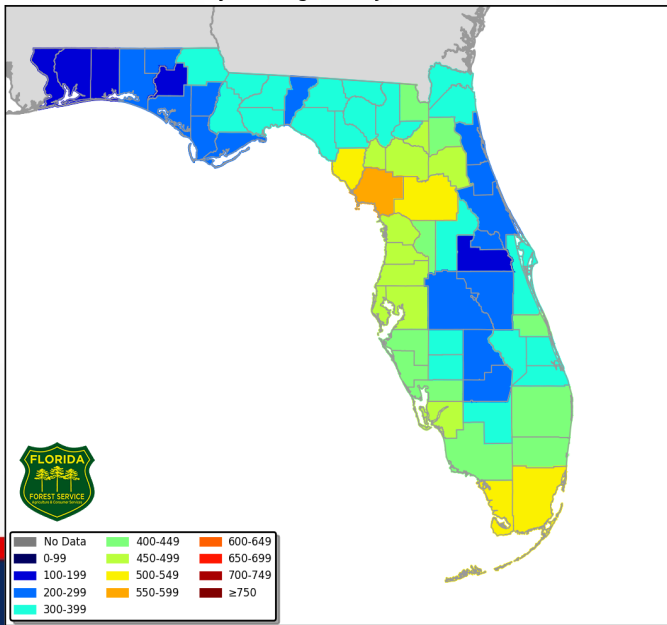
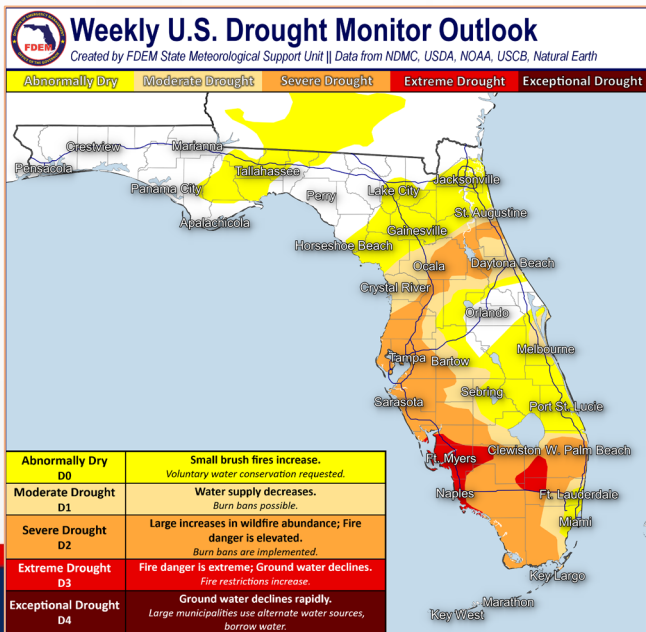
Drought & Fire Weather

Fire Weather: Widespread tropical moisture will give way to daily showers and thunderstorms developing throughout the day, some bringing locally heavy and intense downpours. Thunderstorms will also be capable of producing frequent lightning and erratic winds that may ignite or further spread ongoing wildfires, especially over locally drier areas. The overall wildfire threat across the state continues to remain low. According to the [Florida Forest Service](#), there are 36 active wildfires across the state burning approximately 557 acres.

Drought: Improvement by 1-category was observed across portions of the Sunshine State, courtesy of an active weather pattern during the end of May and beginning of June. **Extreme drought (level 3 of 4)** remains for portions of Southwest Florida and the Everglades; however, additional rounds of shower and thunderstorm activity will work at relieving long-term rainfall deficits. Rainfall totals over the past 14 days trended drier and 1-2 inches below normal for this time of year along portions of North Florida, including the Suwannee and Santa Fe River basins where **low streamflows** continue being reported; a slight expansion of Abnormally Dry (*emerging drought*) was noted on the updated Drought Monitor (6/5/2025). **Above normal temperatures** and **above normal rainfall** is outlooked for the next week as the typical Florida summertime pattern fuels daily shower and thunderstorm activity.

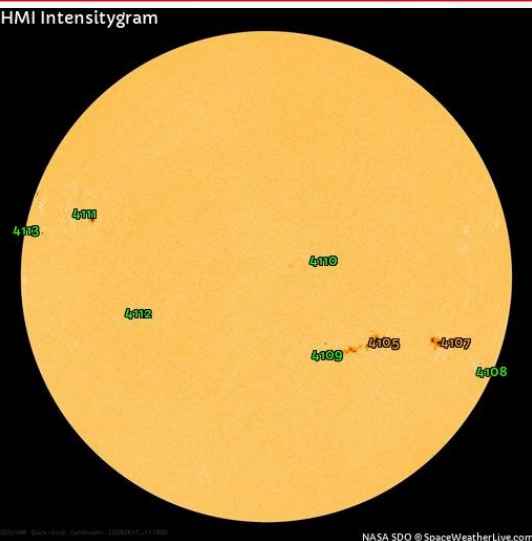
The **Keetch-Byram Drought Index** average for Florida is **365 (-9)** on a scale from 0 (very wet) to 800 (very dry). There are **5** Florida counties (Dixie, Levy, Marion, Miami-Dade and Monroe) with an average KBDI over 500 (drought/increased fire danger).

Keetch Byram Drought Index (KBDI)
County Averages for June 10, 2025

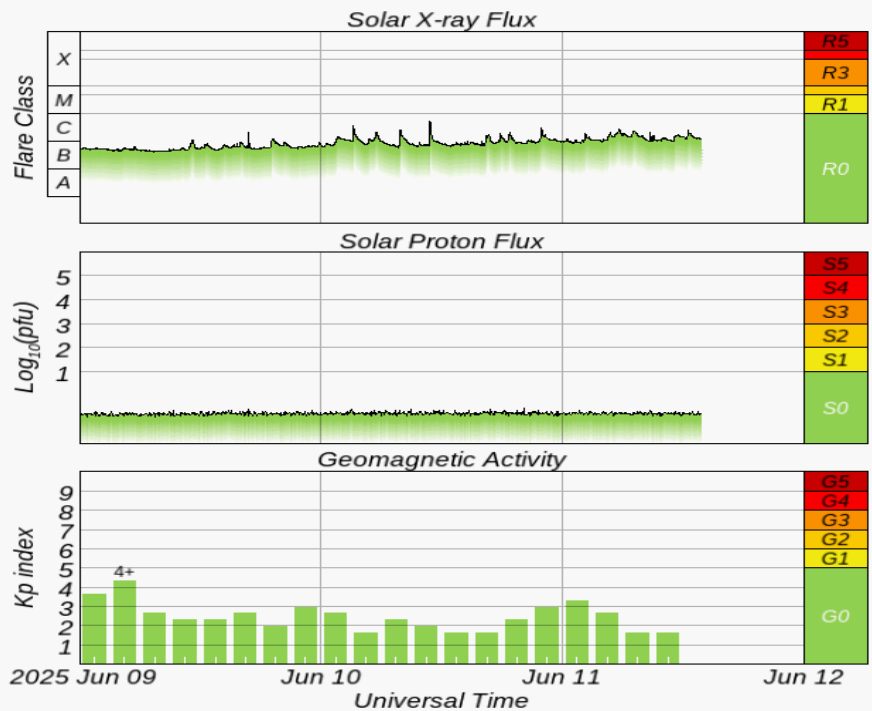
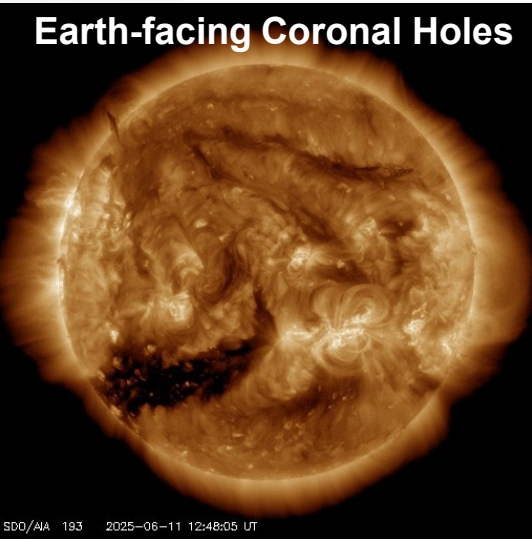




Space Weather



Current Sunspots



Solar Flare Risk	Active Watches & Warnings	Past 24 hours
M-class: 35%	Geomagnetic Storm: None	C3 Solar Flare
X-class: 5%	Radiation Storm: None	No Radio Blackouts

48-Hour Geomagnetic Forecast	
6/11	6/12
Max Kp= 4 (G0)	Max Kp= 4 (G0)
Chance of minor activity = 10% severe activity = 1%	Chance of minor activity = 5% severe activity = 1%

Space Weather: Solar activity will continue to remain low, but probabilities for strong (M-class) solar flares have increased slightly due to sunspots #4105 and #4107 growing. There remains a very slight chance for a significant (X-class) solar flare as well. Any M-class solar flares will bring minor to moderate (R1-R2) radio blackouts should they develop, and any X-class flares will bring strong (R3) radio blackouts. Solar winds flowing from a coronal hole along the southwestern limb will continue to create elevated solar wind parameters through today before waning tomorrow (6/12). A Coronal Mass Ejection (CME) that left the sun 6/8 could pass near Earth later this week, which could bring an additional enhanced solar wind field. Unsettled to active geomagnetic conditions are expected through today before returning to mostly quiet conditions on Thursday. The overall space threat to Florida remains very low.



SWO Communications Systems & Contact Information

Equipment	Contact	Status	Comments
Phone:	800-320-0519, 850-815-4001, 850-591-0071 (Backup Cell)	Operational	
Backup Landline:	850-487-3234, 850-487-3228	Operational	
Fax:	850-815-4979	Operational	
Email:	SWP@em.myflorida.com	Operational	
SWO Tracker:	https://apps.floridadisaster.org/SWO/	Operational	
SLERS:	DEM Statewide	Operational	
FNARS:	WGY974	Operational	
Federal NAWAS:	State Watch Office	Operational	
EMnet Message:	FL.000- State Watch Office	Operational	
EMnet Voice:	FL SWP- State Watch Office	Operational	
IPAWS:	LP.1 Stations via Emnet	Operational	
FIN:	SOFEOC	Operational	
Satellite Phones:	MSAT 888-890-5178 or Iridium 480-263-8838	Operational	
Website:	http://www.floridadisaster.org	Operational	

Users wishing to subscribe (approval pending) to this distribution list, register at:

https://public.govdelivery.com/accounts/FLDEM/subscriber/new?topic_id=Morning_SITREP