



# **Florida Division of Emergency Management State Watch Office**

## **Morning Situation Report**

Tuesday, June 10, 2025



# State Emergency Operations Center Activation Level

Level 2 Activation



# SERT On-Call Personnel

Position	Personnel	Phone	Email
Operations Chief	Amy Godsey	(850) 519-8483	<a href="mailto:Amy.Godsey@em.myflorida.com">Amy.Godsey@em.myflorida.com</a>
Watch Officer	Caitlyn Gillespie	(850) 688-2119	<a href="mailto:Caitlyn.Gillespie@em.myflorida.com">Caitlyn.Gillespie@em.myflorida.com</a>
Duty Officer	Jeremy Whitt	(850) 755-8521	<a href="mailto:Jeremy.Whitt@em.myflorida.com">Jeremy.Whitt@em.myflorida.com</a>
Operations Officer- Day	Lauren Warfield	(850) 815-4001	<a href="mailto:SWP@em.myflorida.com">SWP@em.myflorida.com</a>
Operations Officer- Swing	Kaya Dungey	(850) 815-4001	<a href="mailto:SWP@em.myflorida.com">SWP@em.myflorida.com</a>
Operations Officer- Night	Matthew Peloso	(850) 815-4001	<a href="mailto:SWP@em.myflorida.com">SWP@em.myflorida.com</a>
Meteorologist	Kennedy Tartt	(850) 567-6368	<a href="mailto:Kennedy.Tartt@em.myflorida.com">Kennedy.Tartt@em.myflorida.com</a>
Plans Chief	Kaylynn Perry	(850) 254-5657	<a href="mailto:Plans_Command@em.myflorida.com">Plans_Command@em.myflorida.com</a>
Logistics Chief	Christina Goetzman	(850) 519-8581	<a href="mailto:Christina.Goetzman@em.myflorida.com">Christina.Goetzman@em.myflorida.com</a>
Human Services Director	Pam Hughes	(850) 528-5638	<a href="mailto:Pamela.Hughes@em.myflorida.com">Pamela.Hughes@em.myflorida.com</a>
Emergency Services	Tim Kenyon	(850) 591-7732	<a href="mailto:Tim.Kenyon@em.myflorida.com">Tim.Kenyon@em.myflorida.com</a>
Infrastructure Branch Director	Christina Goetzman	(850) 519-8581	<a href="mailto:Christina.Goetzman@em.myflorida.com">Christina.Goetzman@em.myflorida.com</a>
ESF 8 On-Call	Brandon Gore	(866) 786-4673	<a href="mailto:DLDOHDutyOfficers@flhealth.gov">DLDOHDutyOfficers@flhealth.gov</a>
Public Information Officer	Stephanie Hartman	(850) 570-3053	<a href="mailto:Stephanie.Hartman@em.myflorida.com">Stephanie.Hartman@em.myflorida.com</a>
DEM Finance and Admin	Jeremy Smith	(850) 273-1273	<a href="mailto:Jeremy.Smith@em.myflorida.com">Jeremy.Smith@em.myflorida.com</a>



# Response Regional Coordination Team



Team	County Location	Visits
Region 1: Jim Roberts	Gadsden	Office Admin / Regional Meeting Prep / Vehicle Maintenance
Region 2: Willie Bouie	Leon	Office Admin / PMP Exam Prep
Region 3: Glen Hammers	Columbia	Vehicle Maintenance
Region 4: Tara Kostich	Clay	Vehicle Maintenance
Region 5: Austin Beeghly	Orange	FTEM
Region 6: Paul Siddall	Manatee, Pinellas, Hillsborough	FDOT Meeting / Logs Meeting / Healthcare Hurricane Meeting
Region 7: Kathryn Hollenbeck	Polk	HCC Task Force Meeting
Region 8: Mason Kozac	St Lucie	Office Admin
Region 9: Vacant	N/A	N/A
Region 10: Claudia Baker	Miami-Dade	USCG MRO Exercise Planning Meeting

Region 2 Coverage Provided by Recovery Coordinator 2  
Region 9 Coverage Provided by Response Coordinator 6

## Status

Normal Operations

Out of Service / Unavailable



# Recovery Regional Coordination Team

Team	County Location	Status / Activities
Region 1: Allison Blevins	Orange	FTEM
Region 2: Justin Lazzara	Leon	FEMA CA Meeting
Region 3: Vacant	N/A	See Coverage
Region 4: Joshua Saunders	Orange	FTEM
Region 5: Elizabeth Caison	Orange	FTEM
Vacant	N/A	See Coverage
Region 6: Vacant		
Region 7: Antonio Zapata	Orange	FTEM
Region 8: Ja-Pheth Butler-Miller	Orange	FTEM
Region 9: Jacob Ginsberg	Orange	FTEM
Region 10: Vacant	N/A	See Coverage

Region 3 Coverage Provided by Recovery Coordinator 2 & 4

Region 6 Coverage Provided by Recovery Coordinator 5

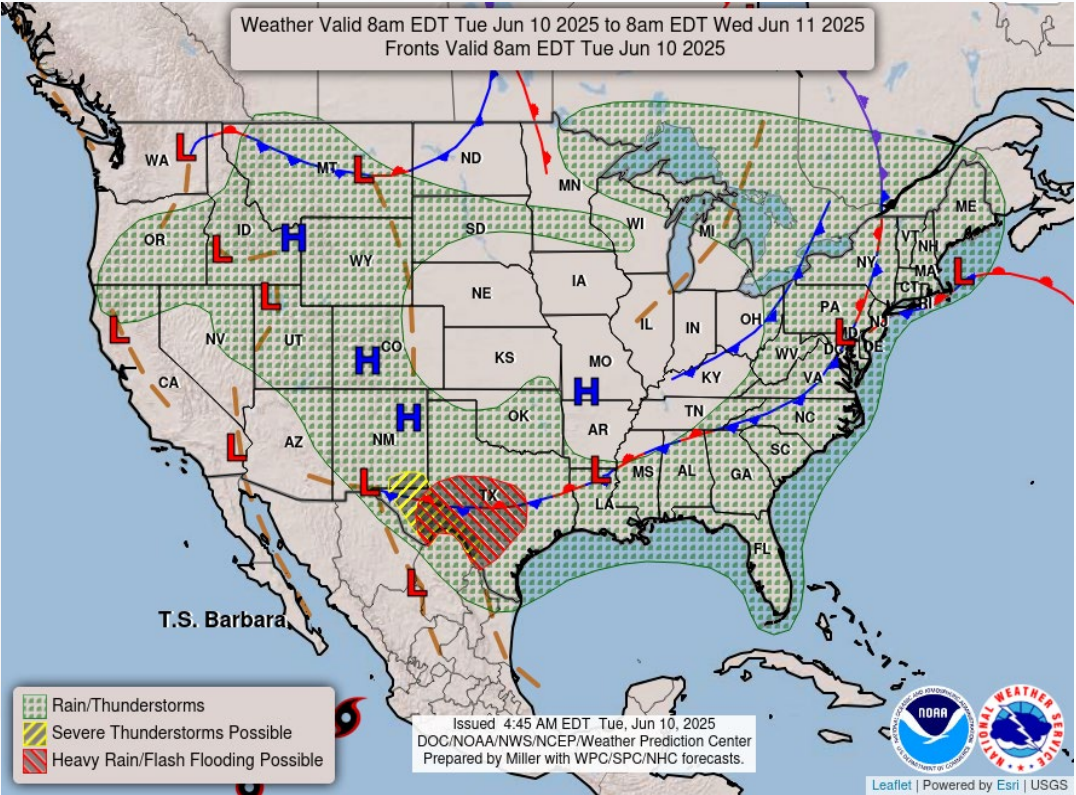
Region 10 Coverage Provided by Recovery Coordinator 8

Status
Normal Operations
In Region / Delayed Response
Deployed / Delayed Response
Out of Service / Unavailable



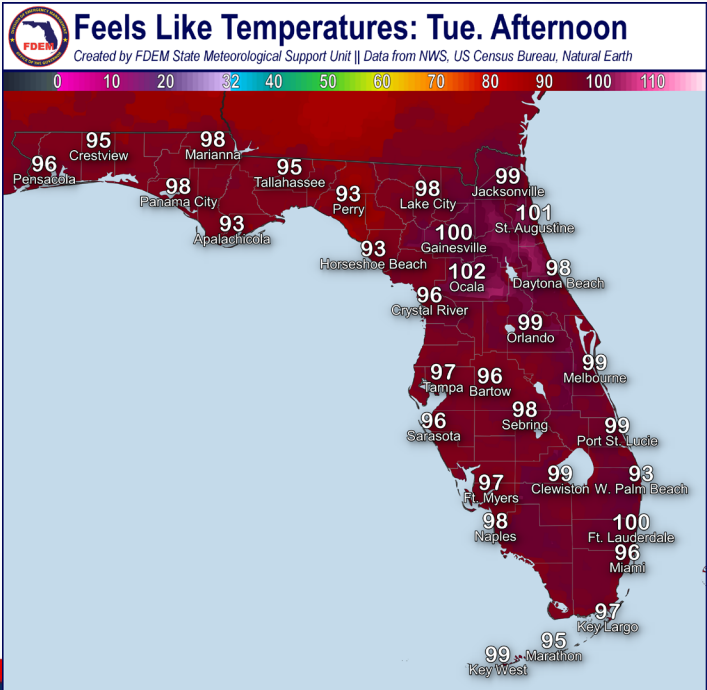
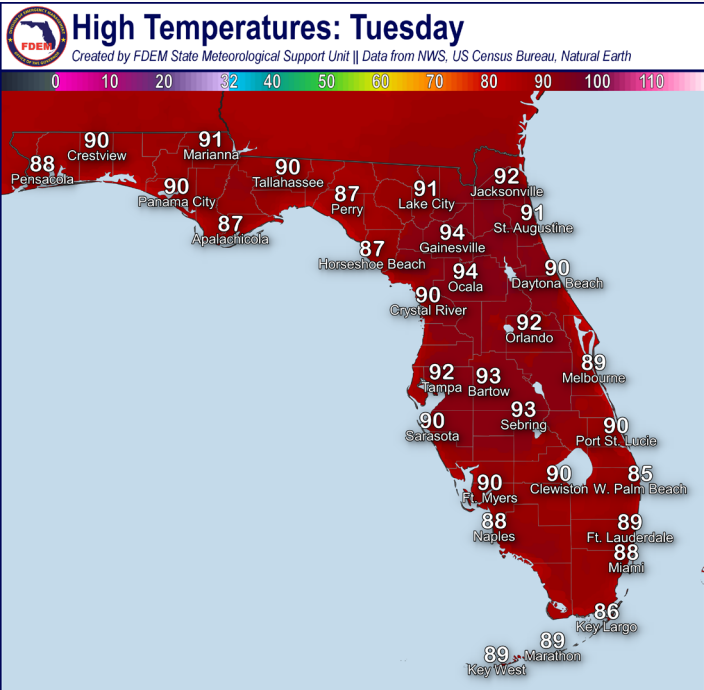


# Meteorology Summary



Today's Weather Map

T threat	R1	R2	R3	R4	R5	R6	R7	R8	R9	R10
Lightning	M	M	M	M	H	M	H	H	H	H
Tornado										
Damaging Wind	L			L	L					
Hail	L									
Flash Flooding	L	L	L							
Excessive Heat	L	L	L	M	M	L	L	M	L	M
Wildfire										
Fog (Overnight)										
Rip Currents	H	H	M	M	M	L		M	L	M
Lake Okeechobee Elevation	11.16 ft. (1.99 ft. <u>Below Normal</u> )									
Keetch-Byram Drought Index	375 (-3) on a scale from 0 (very moist) to 800 (very dry)									





# Meteorology Summary

## Statewide Overview, Next 24 Hours:

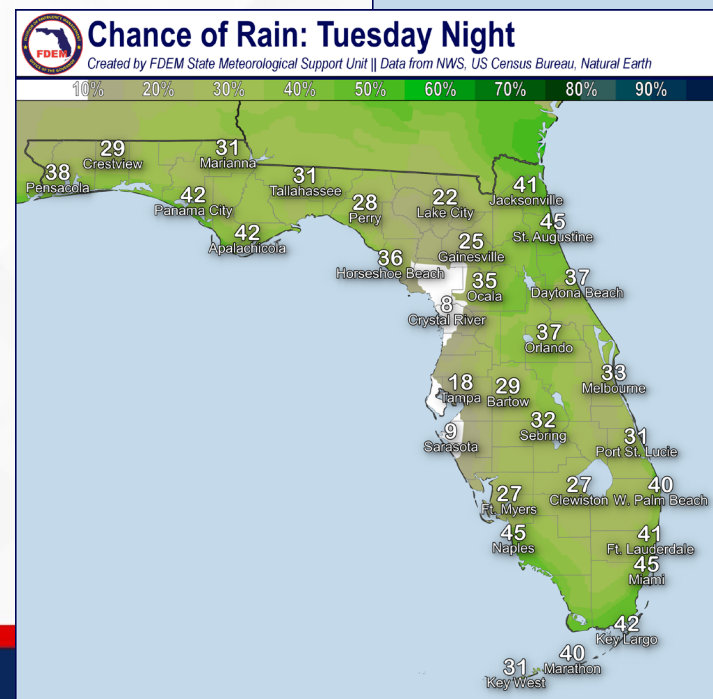
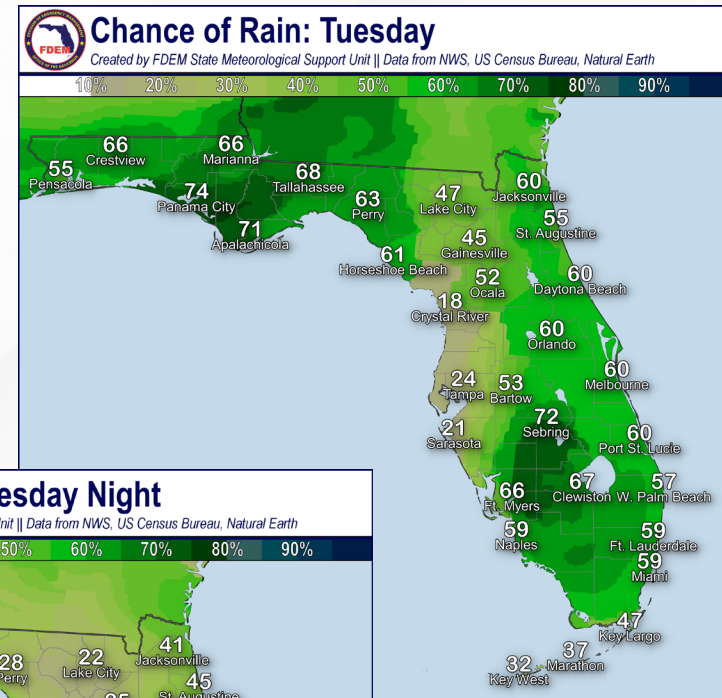
A line of showers and thunderstorms that moved across the Panhandle and Big Bend overnight and this morning, continues to break apart and dissipate. Additional showers and thunderstorms have begun to develop along the Nature and West Coast of Florida.

Upper-level support from an approaching frontal boundary and plenty of tropical moisture will lead to scattered showers and thunderstorms developing across the Sunshine State throughout the day (45-75% chance of rain). The Storm Prediction Center (SPC) has introduced a **Marginal Risk (level 1 of 5) for Severe Weather** along portions of the Panhandle, as well as along portions of the Atlantic Coast, as sea breeze thunderstorms may become **severe in nature** during the peak heating hours of the day bringing damaging wind gusts (50-60 mph) and large hail (quarter-size). While organized severe weather is not anticipated throughout the rest of the state, **locally embedded strong to severe thunderstorms** will be possible with the help of daytime heating. These **stronger thunderstorms** will be capable of bringing frequent lightning, gusty winds and locally heavy downpours. Portions of the Panhandle and Big Bend have already seen multiple rounds of locally heavy rainfall and flash flooding over the last couple of days, and additional rainfall could exacerbate or lead to an earlier **onset of flash flooding or ponding of water** today. The Weather Prediction Center (WPC) has maintained a **Marginal Risk (level 1 of 4) for Flash Flooding** across the Panhandle and Big Bend for additional instances of **possible flash flooding or ponding of water** across urban and low-lying/poor drainage areas.

**Warm and muggy conditions** can be expected around the state through the afternoon hours as high temperatures reach the lower to middle 90s and **heat index values** reaching **the middle 90s to triple digits (100-105-degrees)**. These heat index values continue to remain just below heat advisory criteria; however, heat safety should continue to be practiced.

Shower and thunderstorm activity should continue throughout the evening hours before moving with the sea breeze back towards the coastlines and adjacent coastal waters. A few showers and embedded thunderstorms may linger overnight near the coastal waters, but overall, mostly dry conditions can be anticipated (20-35% chance of rain). Instances of **locally patchy fog** cannot be ruled out early Wednesday morning following rainfall from earlier in the day and calm conditions returning overnight.

Low temperatures will continue to fall into the 70s and lower 80s overnight.



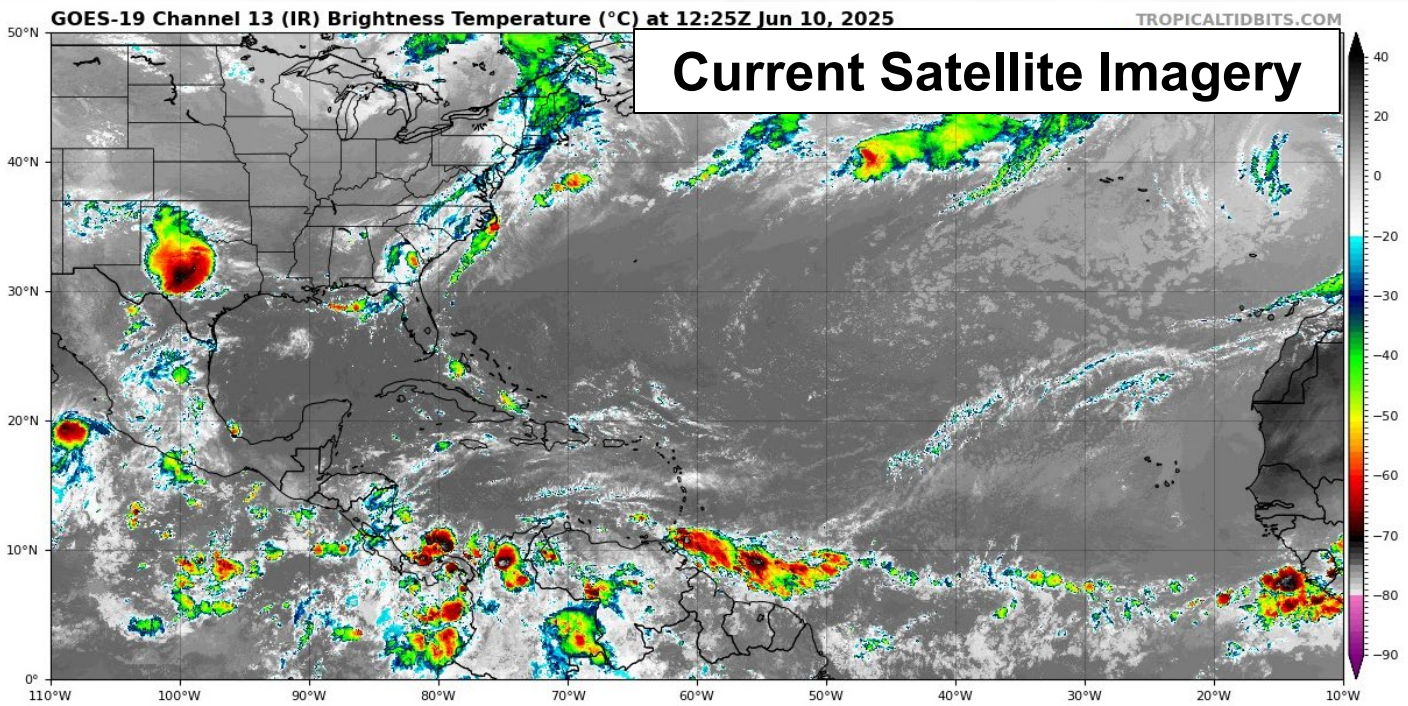
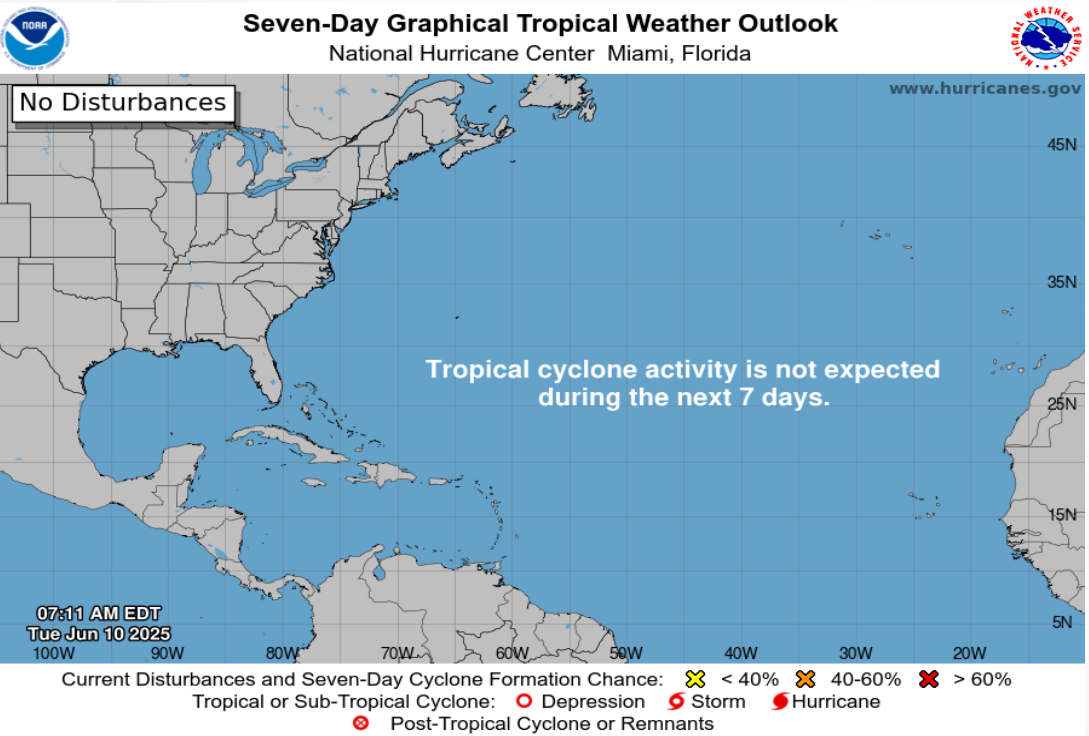




# Tropical Weather

For the latest on the tropics, please visit the National Hurricane Center (NHC) at [www.hurricanes.gov](http://www.hurricanes.gov).

Tropical development is not expected over the next 7 days across the Atlantic basin.







# Coastal Hazards & Hydrology

**Rip Currents:** A **high risk for rip currents** can be expected along all Panhandle beaches due to onshore winds and elevated surf. A **moderate risk** expands along all Atlantic Coast beaches. West Coast beaches can expect to see a low risk. For the latest Rip Current Outlook, visit [www.weather.gov/beach](http://www.weather.gov/beach).

**Marine Hazards:** Wave heights of 1-3' can be expected throughout the state.

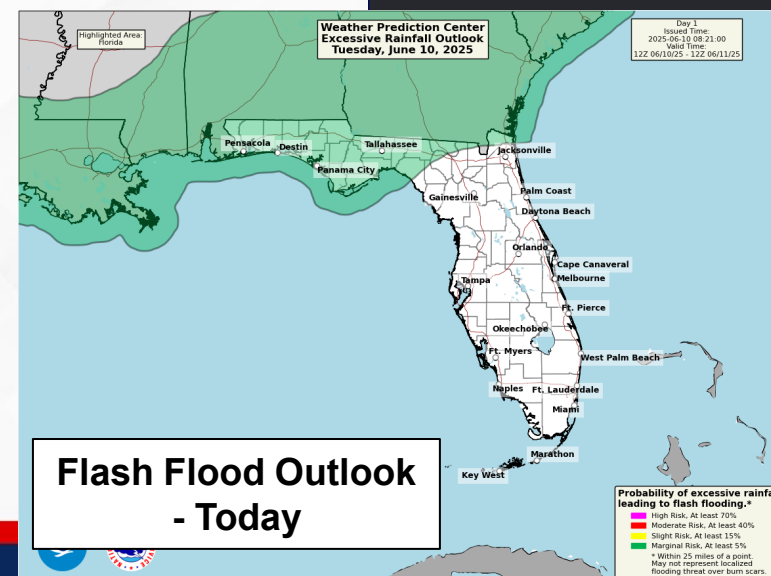
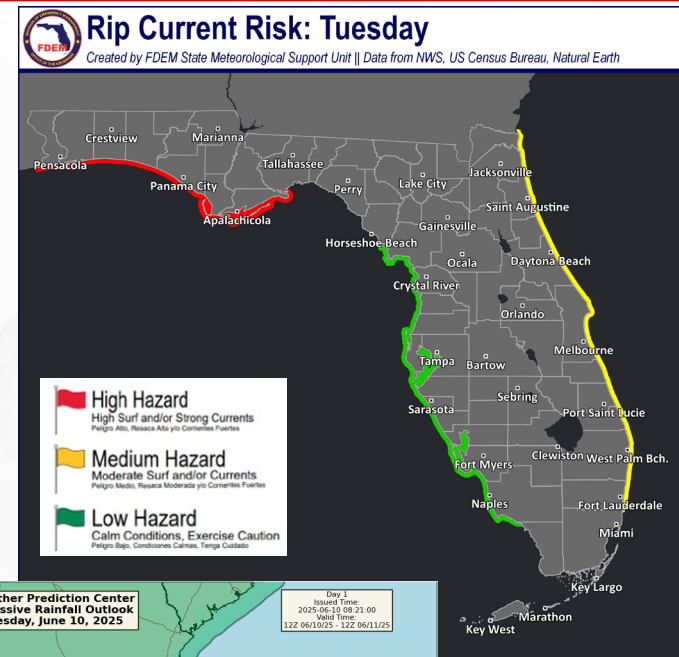
**Red Tide** has been not been observed along any Florida coastline over the past week (valid 6/6).

**Coastal Flooding:** There is no risk for coastal flooding today.

**Flash Flooding:** Additional rounds of scattered showers and thunderstorms will bring locally heavy rainfall to areas that have already seen widespread rainfall recently, leading to an increased risk for flash flooding across the Panhandle and Big Bend. The Weather Prediction Center (WPC) is outlooking a **Marginal Risk (level 1 of 4) for Flash Flooding** today as tropical moisture continues to aid shower and thunderstorm development. Areas may already be sensitive with additional locally heavy rainfall that occurs today, and an earlier onset of **localized flash flooding** is possible for urban and low-lying/poor drainage areas. Rainfall totals of 1-2" can be expected throughout the state, with **locally higher totals** upwards of 3-5" possible.

**Riverine Flooding:** Following recent heavy rainfall from repeated rounds of shower and thunderstorm activity, a handful of Panhandle rivers and creeks have seen water levels rise near or into flood stage. A **River Flood Warning** has been issued for the [Big Coldwater Creek near Milton](#) as water levels are forecast to rise into **minor flood stage** over the next day or two before quickly falling below flood stage by the end of the week. The [Escambia River near Century](#) is currently within Action Stage (bank-full), but could rise near **minor flood stage** later this week depending on additional rainfall. The [Shoal River near Crestview](#) is currently within Action Stage (bank-full), but is forecast to fall below that stage within the next couple of days. There are no additional riverine concerns at this time. For more information, visit the [River Forecast Center](#).

**Lake Okeechobee's** average elevation is 11.16 feet, which is within the operational band and is 1.99 feet below normal for this time of year.





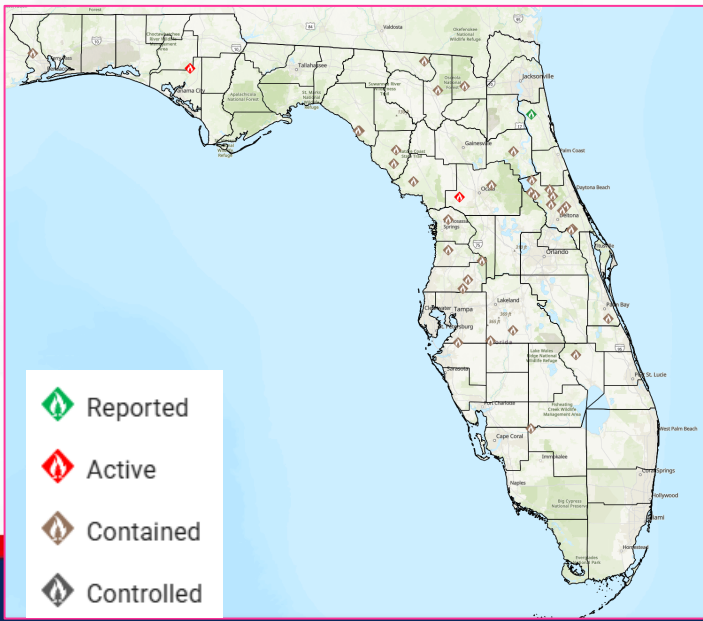
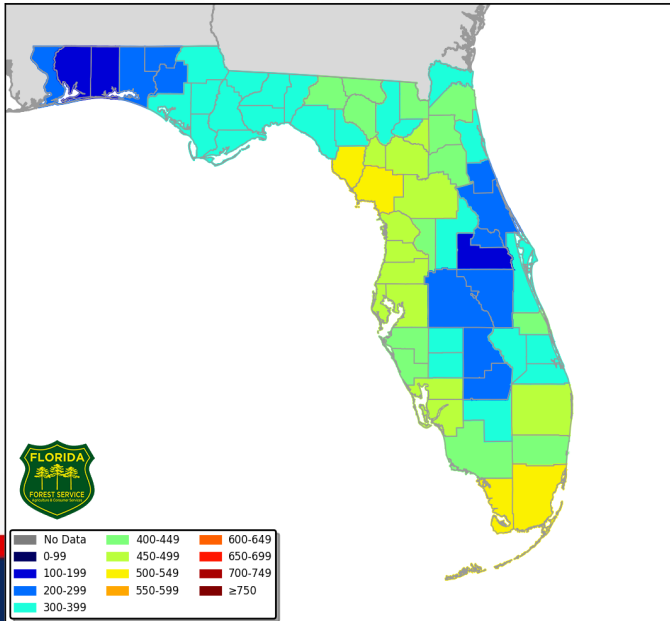
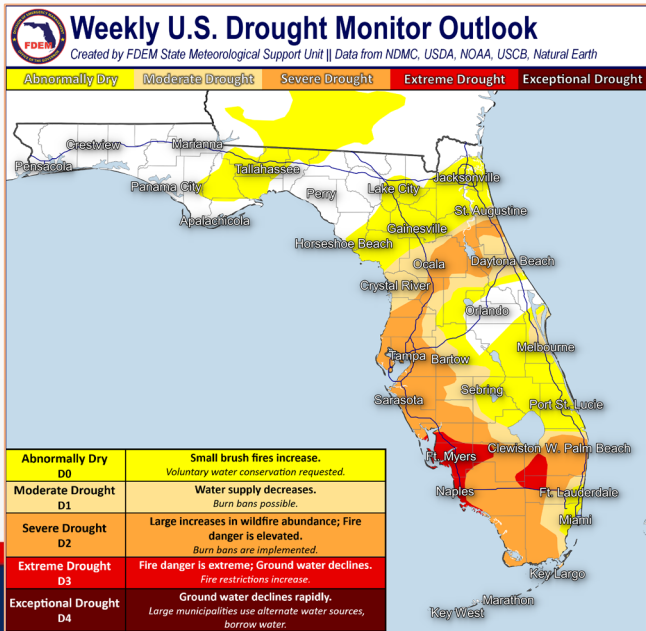
# Drought & Fire Weather

**Fire Weather:** Tropical moisture in place will continue to fuel daily shower and thunderstorm development along the sea breeze boundaries across the state. Thunderstorms will be capable of producing frequent lightning and erratic winds. Locally heavy rainfall may continue aid in helping drought conditions throughout the state as well. According to the [Florida Forest Service](#), there are 35 active wildfires across the state burning approximately 347 acres.

**Drought:** Improvement by 1-category was observed across portions of the Sunshine State, courtesy of an active weather pattern during the end of May and beginning of June. **Extreme drought (level 3 of 4)** remains for portions of Southwest Florida and the Everglades; however, additional rounds of shower and thunderstorm activity will work at relieving long-term rainfall deficits. Rainfall totals over the past 14 days trended drier and 1-2 inches below normal for this time of year along portions of North Florida, including the Suwannee and Santa Fe River basins where **low streamflows** continue being reported; a slight expansion of Abnormally Dry (*emerging drought*) was noted on the updated Drought Monitor (6/5/2025). **Above normal temperatures** and **above normal rainfall** is outlooked for the next week as the typical Florida summertime pattern fuels daily shower and thunderstorm activity.

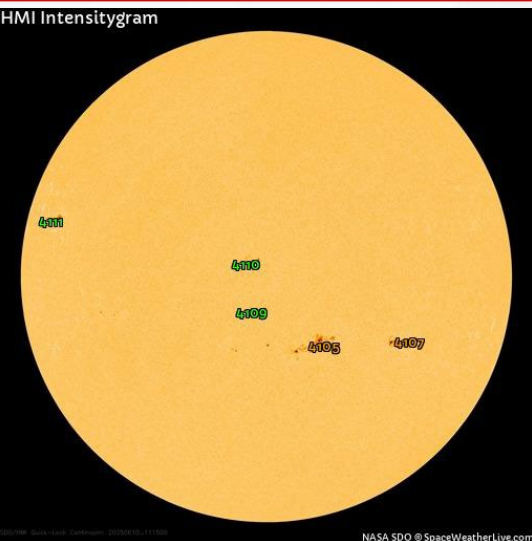
The **Keetch-Byram Drought Index** average for Florida is **375 (-3)** on a scale from 0 (very wet) to 800 (very dry). There are **4** Florida counties (Dixie, Levy Miami-Dade and Monroe) with an average KBDI over 500 (drought/increased fire danger).

Keetch Byram Drought Index (KBDI)  
County Averages for June 09, 2025

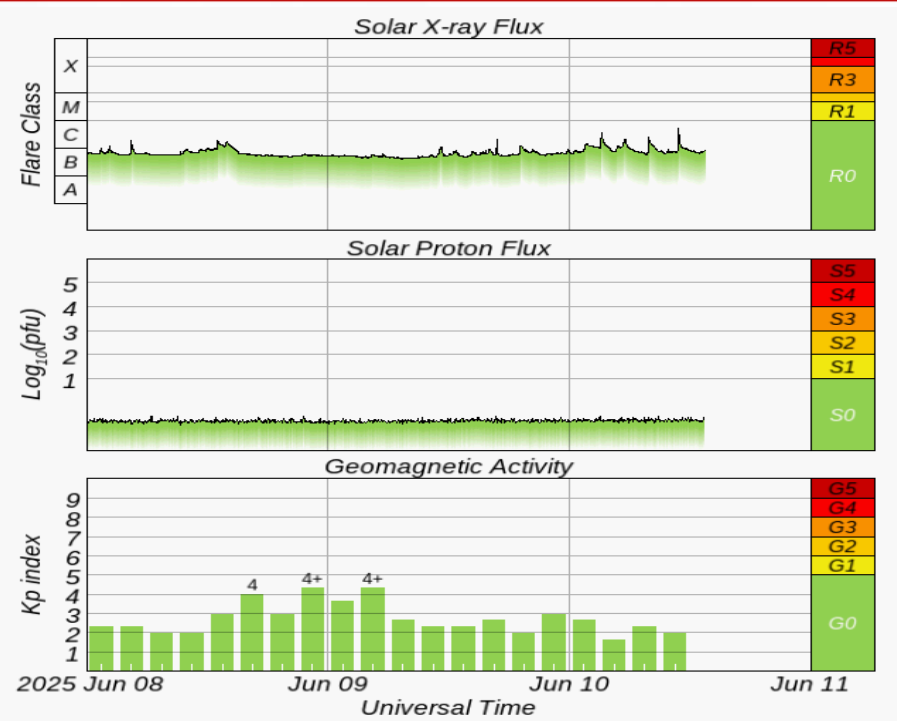
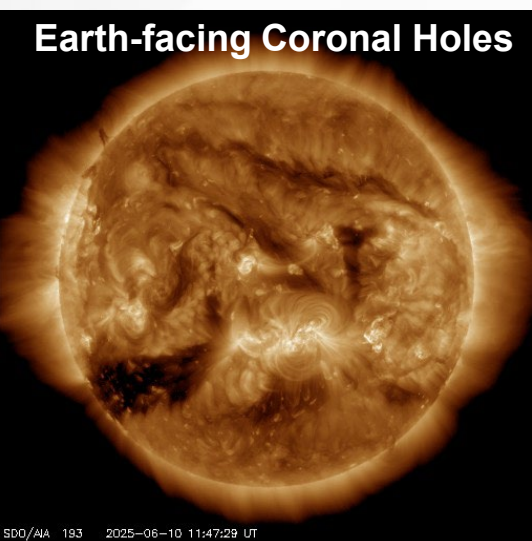




# Space Weather



Current Sunspots



Solar Flare Risk	Active Watches & Warnings	Past 24 hours
M-class: 20%	Geomagnetic Storm: None	C5 Solar Flare
X-class: 5%	Radiation Storm: None	No Radio Blackouts

48-Hour Geomagnetic Forecast	
6/10	6/11
Max Kp= 4 (G0)	Max Kp= 4 (G0)
Chance of minor activity = 10% severe activity = 1%	Chance of minor activity = 10% severe activity = 1%

**Space Weather:** Solar activity is expected to reach low levels with a chance for moderate to strong (C-class to M-class) solar flares as sunspot #4105 continues to pose as a threat for M-class solar flares. Minor to moderate (R1-R2) radio blackouts will accompany any M-class solar flares that develop. Solar winds flowing from a Coronal Hole will create elevated solar wind conditions for the next couple of days. Unsettled to active geomagnetic storming conditions will remain possible through today and tomorrow before returning to background levels. The overall space threat to Florida is very low.





# SWO Communications Systems & Contact Information

Equipment	Contact	Status	Comments
Phone:	800-320-0519, 850-815-4001, 850-591-0071 (Backup Cell)	Operational	
Backup Landline:	850-487-3234, 850-487-3228	Operational	
Fax:	850-815-4979	Operational	
Email:	<a href="mailto:SWP@em.myflorida.com">SWP@em.myflorida.com</a>	Operational	
SWO Tracker:	<a href="https://apps.floridadisaster.org/SWO/">https://apps.floridadisaster.org/SWO/</a>	Operational	
SLERS:	DEM Statewide	Operational	
FNARS:	WGY974	Operational	
Federal NAWAS:	State Watch Office	Operational	
EMnet Message:	FL.000- State Watch Office	Operational	
EMnet Voice:	FL SWP- State Watch Office	Operational	
IPAWS:	LP.1 Stations via Emnet	Operational	
FIN:	SOFEOC	Operational	
Satellite Phones:	MSAT 888-890-5178 or Iridium 480-263-8838	Operational	
Website:	<a href="http://www.floridadisaster.org">http://www.floridadisaster.org</a>	Operational	

Users wishing to subscribe (approval pending) to this distribution list, register at:

[https://public.govdelivery.com/accounts/FLDEM/subscriber/new?topic\\_id=Morning\\_SITREP](https://public.govdelivery.com/accounts/FLDEM/subscriber/new?topic_id=Morning_SITREP)