



Florida Division of Emergency Management State Watch Office

Morning Situation Report

Thursday, June 5, 2025



State Emergency Operations Center Activation Level

Level 2 Activation



SERT On-Call Personnel

Position	Personnel	Phone	Email
Operations Chief	Amy Godsey	(850) 519-8483	Amy.Godsey@em.myflorida.com
Watch Officer	Woody Harvey	(850) 591-7939	Woodham.Harvey@em.myflorida.com
Duty Officer	Jay Griffin	(850) 524-4094	Kellen.Griffin-Jay@em.myflorida.com
Operations Officer- Day	Lauren Warfield	(850) 815-4001	SWP@em.myflorida.com
Operations Officer- Swing	Zachary Remante	(850) 815-4001	SWP@em.myflorida.com
Operations Officer- Night	Jim Lawhon	(850) 815-4001	SWP@em.myflorida.com
Meteorologist	Caitlyn Gillespie	(850) 688-2119	Caitlyn.Gillespie@em.myflorida.com
Plans Chief	Kaylynn Perry	(850) 254-5657	Plans_Command@em.myflorida.com
Logistics Chief	Christina Goetzman	(850) 519-8581	Christina.Goetzman@em.myflorida.com
Human Services Director	Pam Hughes	(850) 528-5638	Pamela.Hughes@em.myflorida.com
Emergency Services	Tim Kenyon	(850) 591-7732	Tim.Kenyon@em.myflorida.com
Infrastructure Branch Director	Christina Goetzman	(850) 519-8581	Christina.Goetzman@em.myflorida.com
ESF 8 On-Call	Hunter Stafford	(866) 786-4673	DLDOHDutyOfficers@flhealth.gov
Public Information Officer	Stephanie Hartman	(850) 570-3053	Stephanie.Hartman@em.myflorida.com
DEM Finance and Admin	Jeremy Smith	(850) 273-1273	Jeremy.Smith@em.myflorida.com



Response Regional Coordination Team



Team	County Location	Visits
Region 1: Jim Roberts	Calhoun	New Calhoun Liberty Hospital Visit
Region 2: Willie Bouie	Calhoun, Leon	New Calhoun Liberty Hospital Visit / Meterology Interviews / Response Mtg
Region 3: Glen Hammers	Columbia	LSA/Base Camp Site Follow Up / Response Coordinators Mtg
Region 4: Tara Kostich	Duval, Putnam	NAS Mayport Active Assailant Exercise
Region 5: Austin Beeghly	Seminole	Region 5 Quarterly Meeting
Region 6: Paul Siddall	Pasco	FLNG Exercise
Region 7: Kathryn Hollenbeck	Polk	County POD Training/ Response Coordinators Mtg
Region 8: Mason Kozac	Brevard	CFIX ILO Training
Region 9: Vacant	N/A	N/A
Region 10: Claudia Baker	Broward	FLL Airport Hurricane TTX

Region 9 Coverage Provided by Recovery Coordinator 9

Status

Normal Operations

Out of Service / Unavailable



Recovery Regional Coordination Team

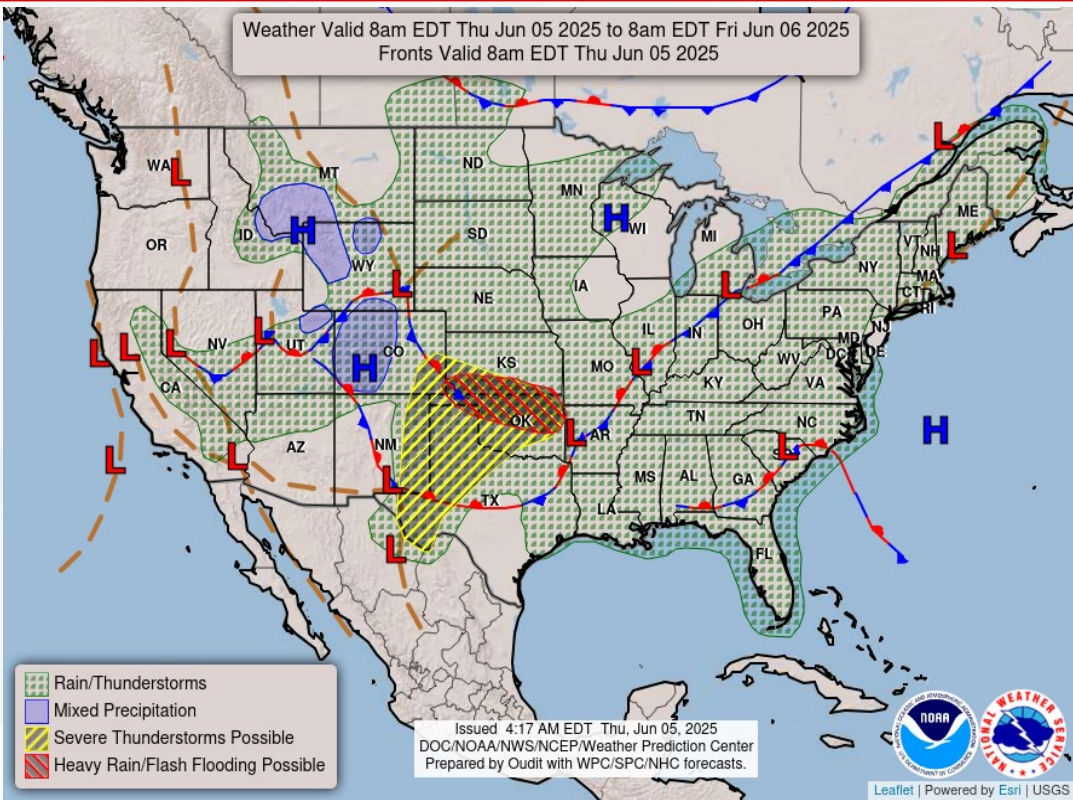
Team	County Location	Status / Activities
Region 1: Allison Blevins	Bay	GIS Training Course
Region 2: Justin Lazzara	Alachua	Telecoms Equipment Maintenance
Region 3: Vacant	N/A	See Coverage
Region 4: Joshua Saunders	Duval	Active Assailant Exercise
Region 5: Elizabeth Caison	Seminole	Regional Quartely Meeting
Vacant	N/A	See Coverage
Region 6: Vacant		
Region 7: Antonio Zapata	Pasco	Army Training Demo
Region 8: Ja-Pheth Butler-Miller	Indian River	LMS Meeting
Region 9: Jacob Ginsberg	Sarasota	Vehicle Maintenance
Region 10: Vacant	N/A	See Coverage

Region 3 Coverage Provided by Recovery Coordinator 2 & 4
Region 6 Coverage Provided by Recovery Coordinator 5
Region 10 Coverage Provided by Recovery Coordinator 8

Status
Normal Operations
In Region / Delayed Response
Deployed / Delayed Response
Out of Service / Unavailable

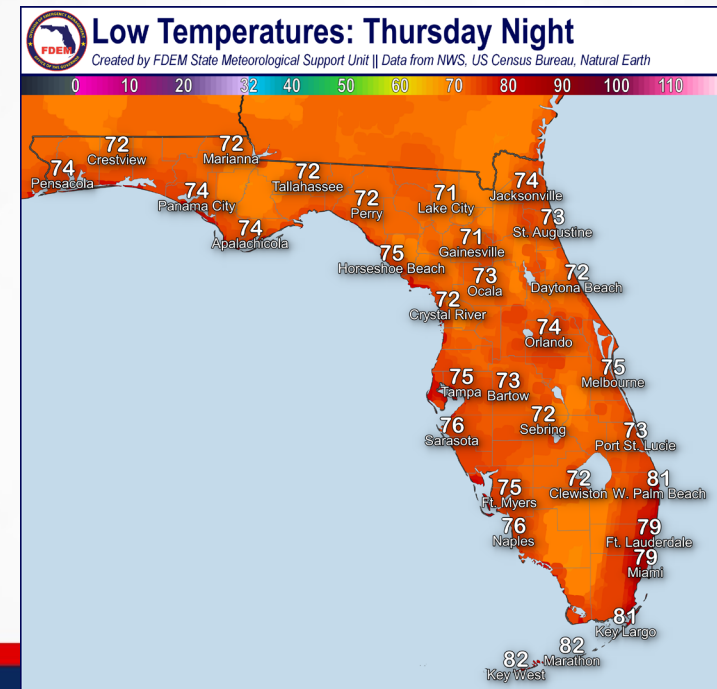
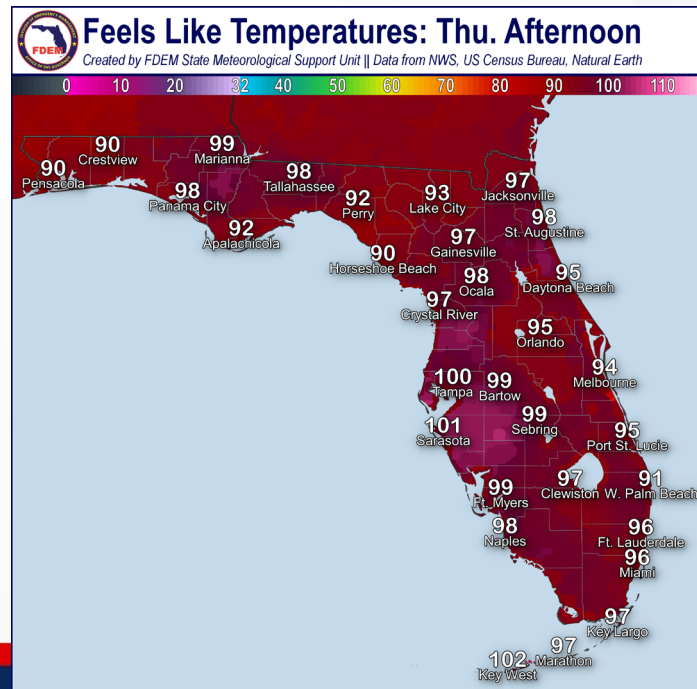


Meteorology Summary



Today's Weather Map

Threat	R1	R2	R3	R4	R5	R6	R7	R8	R9	R10
Lightning	M	H	H	H	M	M	M	L	L	L
Tornado										
Damaging Wind										
Hail										
Flash Flooding										
Excessive Heat	L	L	L	L	L	L	L	L	L	L
Wildfire										
Fog (Overnight)	L	L	L	L						
Rip Currents	H	H	L	M	M	M		H	M	H
Lake Okeechobee Elevation:	11.07 ft. (2.04 ft. <u>Below</u> Normal)									
Keetch-Byram Drought Index:	As of 6/3: 340 (+12) on a scale from 0 (very moist) to 800 (very dry)									





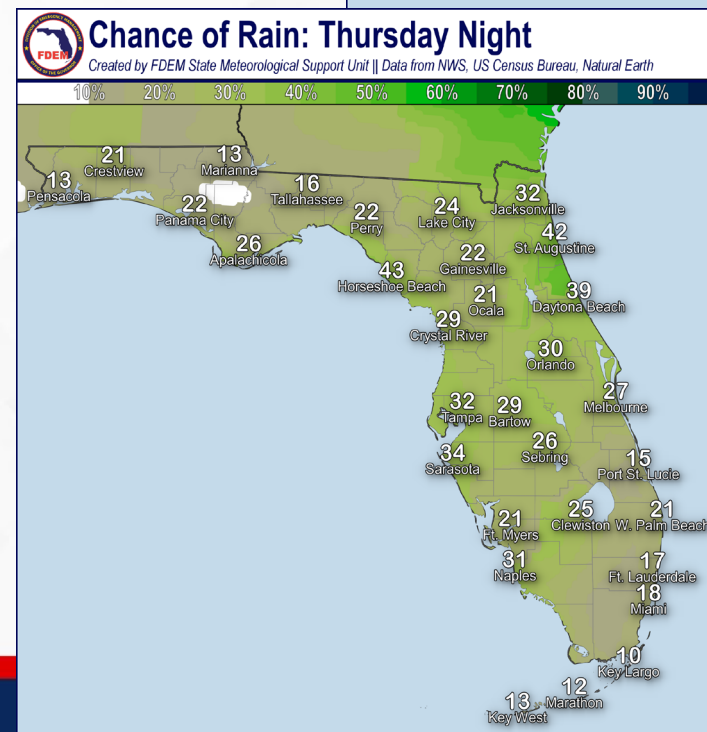
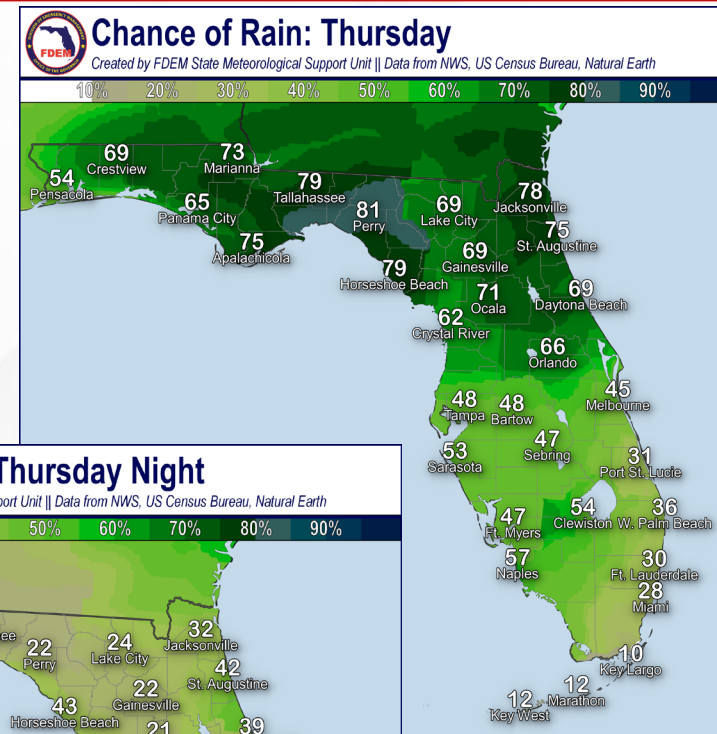
Meteorology Summary

Statewide Overview, Next 24 Hours:

Scattered to widespread shower and thunderstorm activity can be expected across the Sunshine State again today as an upper-level area of low pressure pulls northward along the Mid-Atlantic coastline. Unlike previous days, the greatest coverage of shower and thunderstorm activity returns its focus to North and Central Florida (65-85% chance of rain). There are no organized risks for severe weather or flash flooding; however, **strong to locally severe thunderstorms** cannot be ruled out across the state, especially those that develop at or near times of peak heating. Gusty winds (45-60 mph), frequent lightning, and locally heavy downpours will be possible within any stronger and more organized thunderstorms. Instances of **nuisance flooding and ponding water** will become more likely in the coming days as soils continue to saturate with each round of daily showers and thunderstorms. Shower and thunderstorm chances become more scattered in nature south of the I-4 corridor (30-50%) as the typical summertime pattern returns.

Afternoon high temperatures will rise into the upper 80s to lower 90s across Florida; **triple digit heat index values (98 to 103-degrees)** can be expected nearly statewide, away from western portions of the Florida Panhandle and Space Coast.

Rain chances gradually subside after sunset across Florida, with lingering rain chances along Northeast and East-Central Florida (25-45%). Temperatures will settle in the 70s statewide tonight, with lows remaining above the 80-degree mark along the Florida Keys. Areas of **patchy to locally dense fog and low clouds** will be possible tonight into Friday morning over portions of North Florida.

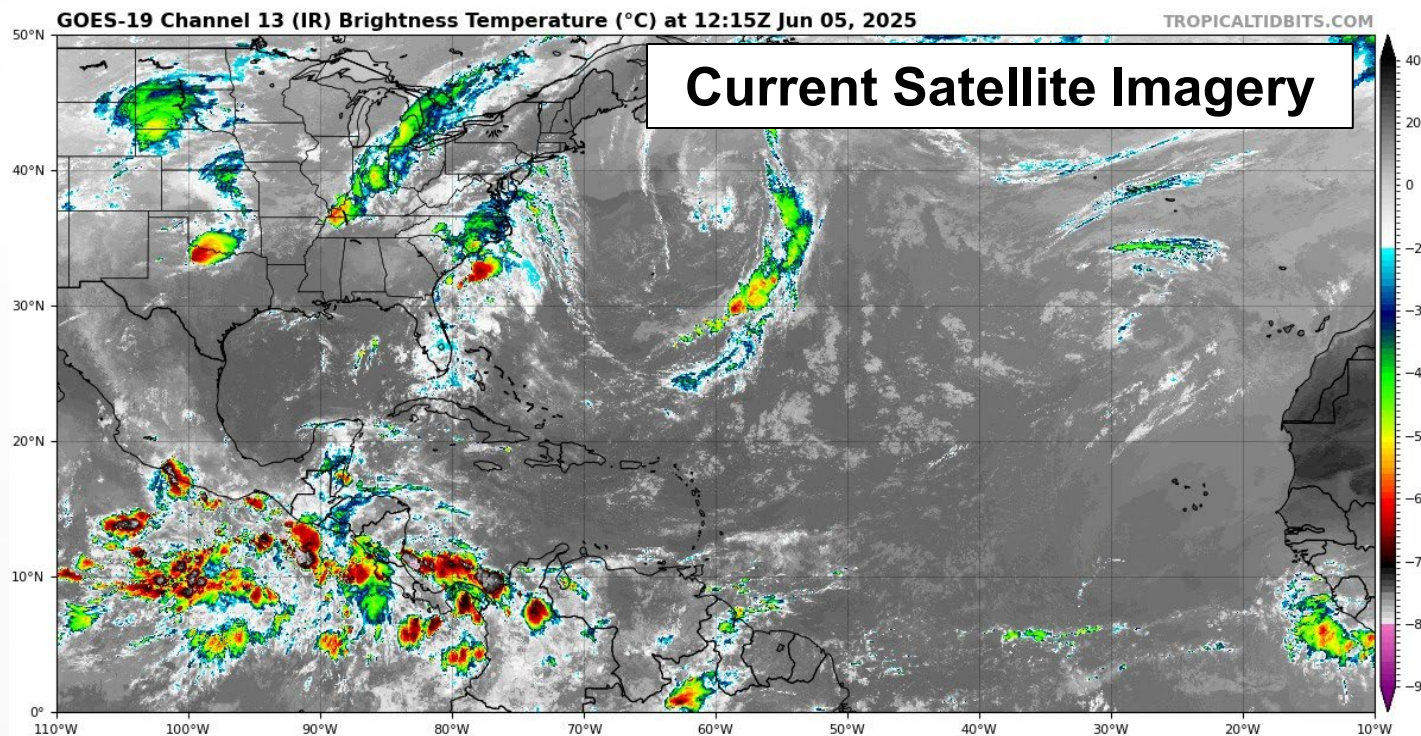
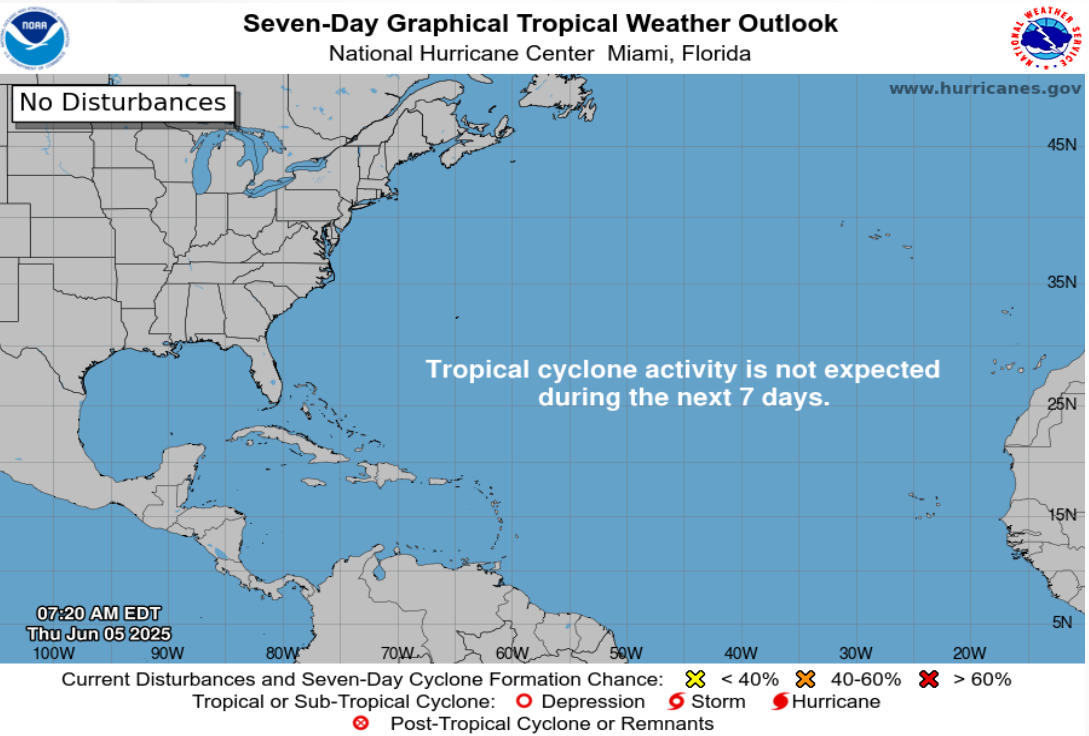




Tropical Weather

For the latest on the tropics, please visit the National Hurricane Center (NHC) at www.hurricanes.gov.

Tropical development is not expected over the next 7 days across the Atlantic basin.





Coastal Hazards & Hydrology

Rip Currents: An **elevated risk of rip currents** can be expected along statewide beaches today, with **high rip current risk** conditions continuing along Florida Panhandle and Southeast Florida beaches. For the latest Rip Current Outlook, visit www.weather.gov/beach.

Marine Hazards: Seas will gradually subside today as our upper-level area of low pressure pulls northeastward along the Mid-Atlantic coastline. **Wave heights** of 2-3' can be expected along statewide beaches, with locally higher breakers in the surf zone reaching 4' possible along the Southeast Florida Coast.

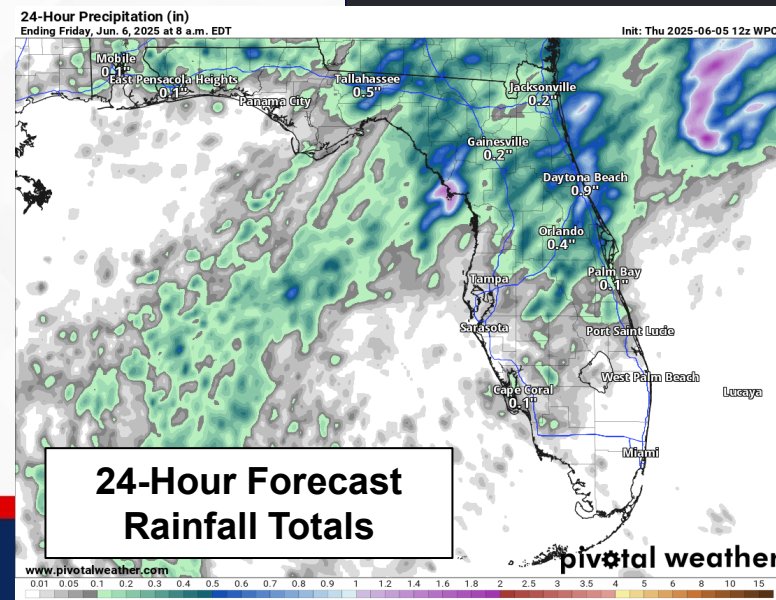
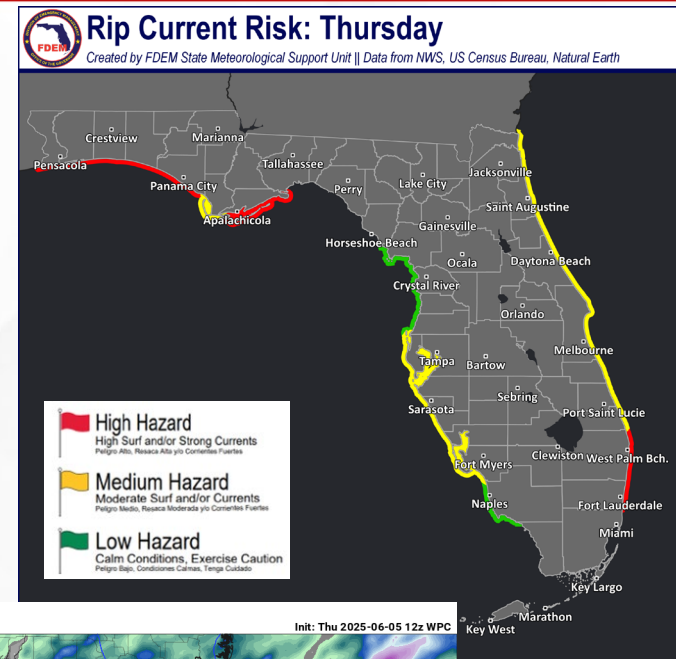
Red Tide has been observed at background levels in one sample from offshore Okaloosa County over the past week (valid 5/30).

Coastal Flooding: There is no risk for coastal flooding today.

Flash Flooding: There is no organized risk for flash flooding today, especially as the more concentrated shower and thunderstorm activity turns toward North and Central Florida (and away from coastal and metro Southeast Florida). Widespread rainfall amounts of 1-2" can be expected; however, heavy rainfall rates will be capable of producing **3-5" of rainfall locally**. Instances of **nuisance flooding and ponding water** will be possible for urban and poor drainage/low-lying areas, especially for locations that experience multiple rounds of shower and thunderstorm activity.

Riverine Flooding: There are no river flooding concerns across Florida. Gradual rises will be possible for some quicker-response North Florida rivers, creeks/streams, and waterways during the coming days, courtesy of a wet and active weather pattern. For more information, visit the River Forecast Center.

Lake Okeechobee's average elevation is 11.14 feet, which is within the operational band and is 1.98 feet below normal for this time of year.





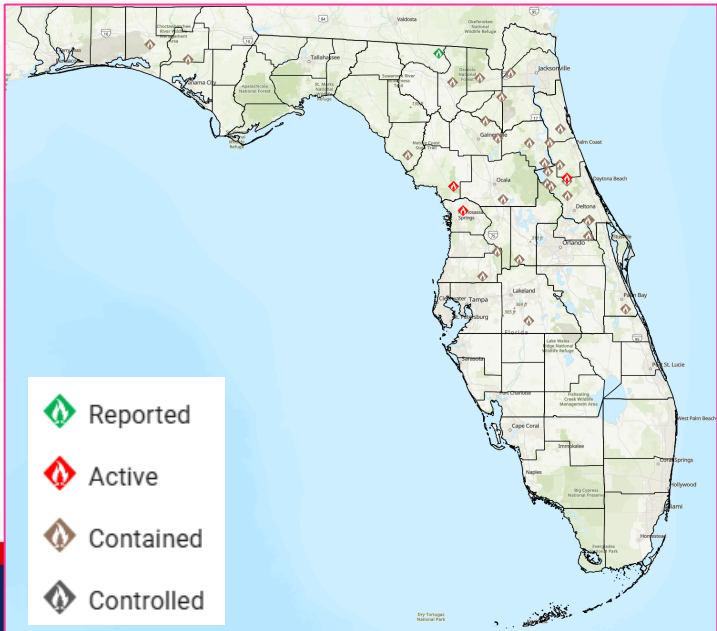
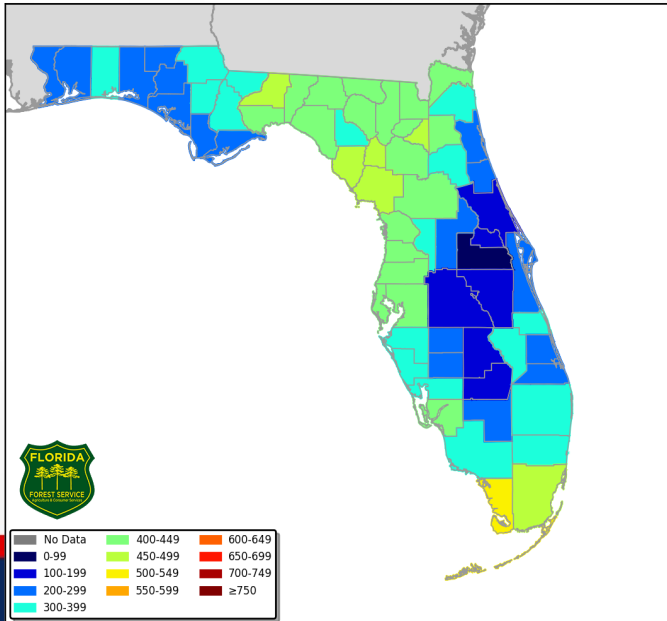
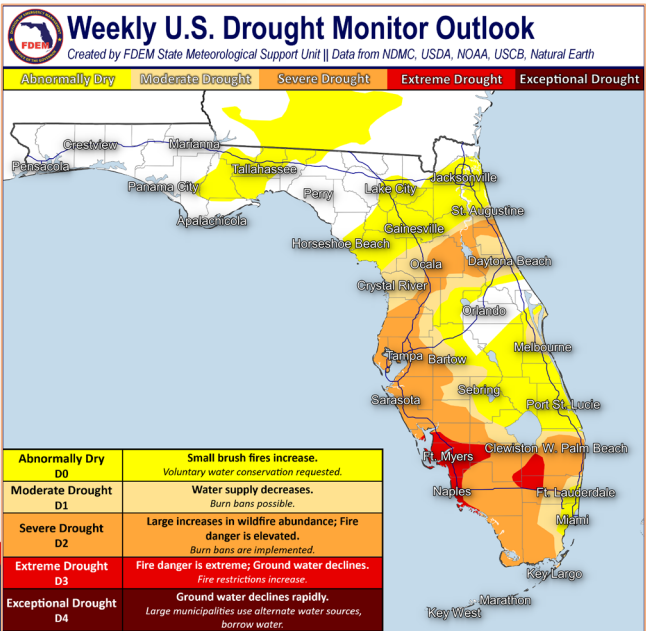
Drought & Fire Weather

Fire Weather: Widespread recent rainfall and the continuation of a wet and active pattern will keep relative humidity values well above critical thresholds. The overall wildfire threat for Florida will be very low. Thunderstorms may produce frequent lightning and gusty/erratic winds this afternoon. Instances of **fog and low clouds** cannot be ruled out for portions of North Florida tonight into Friday morning. According to the [Florida Forest Service](#), there are 32 active wildfires across the state burning approximately 560 acres.

Drought: Improvement by 1-category was observed across portions of the Sunshine State, courtesy of an active weather pattern during the end of May and beginning of June. **Extreme drought (level 3 of 4)** remains for portions of Southwest Florida and the Everglades; however, additional rounds of shower and thunderstorm activity will work at relieving long-term rainfall deficits. Rainfall totals over the past 14 days trended drier and 1-2 inches below normal for this time of year along portions of North Florida, including the Suwannee and Santa Fe River basins where **low streamflows** continue being reported; a slight expansion of Abnormally Dry (*emerging drought*) was noted on the updated Drought Monitor (6/5/2025). **Above normal temperatures** and **above normal rainfall** is outlooked for the next week as the typical Florida summertime pattern fuels daily shower and thunderstorm activity.

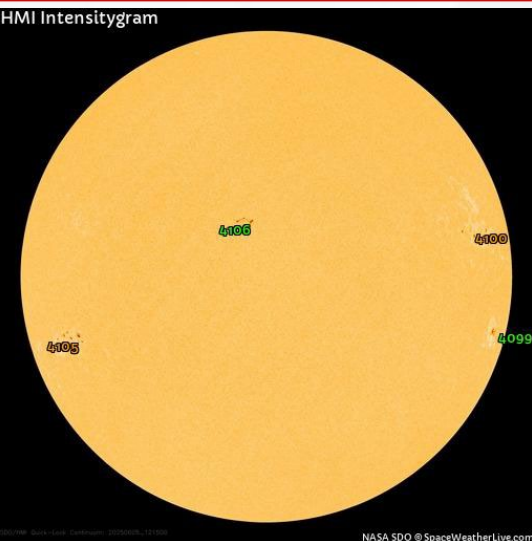
As of 6/3/2025, the **Keetch-Byram Drought Index** average for Florida is **340 (+12)** on a scale from 0 (very wet) to 800 (very dry). There is **1** Florida county (Monroe) with an average KBDI over 500 (drought/increased fire danger).

Keetch Byram Drought Index (KBDI)
County Averages for June 03, 2025

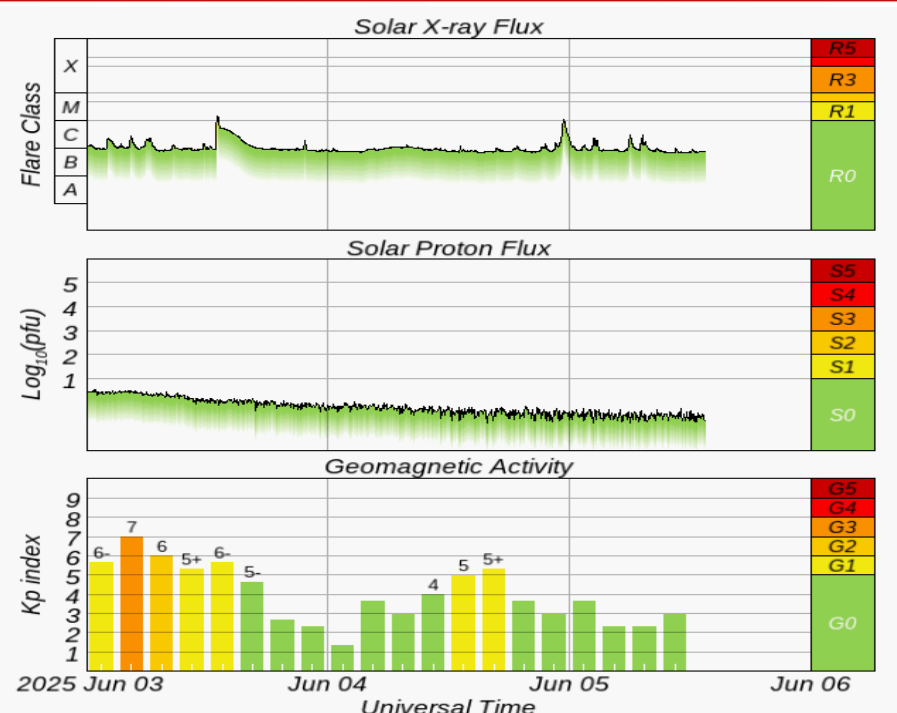
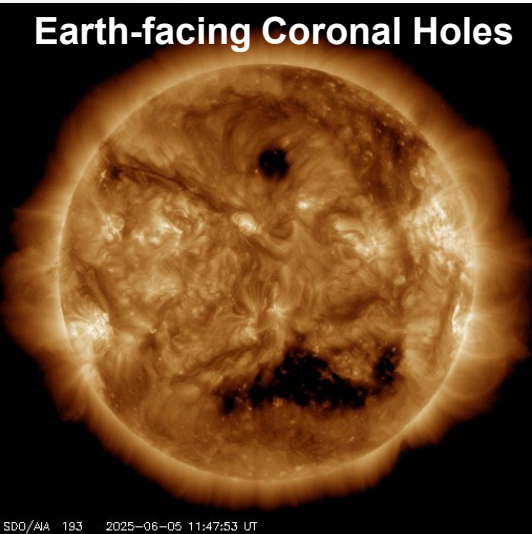




Space Weather



Current Sunspots



Solar Flare Risk	Active Watches & Warnings	Past 24 hours
M-class: 45%	Geomagnetic Storm: None	M1 Solar Flare
X-class: 10%	Radiation Storm: None	R1 Radio Blackouts

48-Hour Geomagnetic Forecast	
6/5	6/6
Max Kp= 5 (G1)	Max Kp= 4 (G0)
Chance of minor activity = 35% severe activity = 20%	Chance of minor activity = 15% severe activity = 1%

Space Weather: Solar activity is expected to be low, with a chance for strong to significant solar flare activity (M-class to X-class) from decaying sunspot #4100. Solar wind parameters are expected remain enhanced again today as they transition back to an environment impacted by coronal hole influences. A glancing blow from a Coronal Mass Ejection (CME) that occurred on 6/3 is forecast to arrive this weekend. Active geomagnetic storm levels are expected through the early afternoon hours today, with G1 (minor) to isolated G2 (moderate) levels likely. Geomagnetic conditions will gradually wane through the remainder of the day, returning to unsettled conditions Friday. The overall space weather threat to Florida remains very low.



SWO Communications Systems & Contact Information

Equipment	Contact	Status	Comments
Phone:	800-320-0519, 850-815-4001, 850-591-0071 (Backup Cell)	Operational	
Backup Landline:	850-487-3234, 850-487-3228	Operational	
Fax:	850-815-4979	Operational	
Email:	SWP@em.myflorida.com	Operational	
SWO Tracker:	https://apps.floridadisaster.org/SWO/	Operational	
SLERS:	DEM Statewide	Operational	
FNARS:	WGY974	Operational	
Federal NAWAS:	State Watch Office	Operational	
EMnet Message:	FL.000- State Watch Office	Operational	
EMnet Voice:	FL SWP- State Watch Office	Operational	
IPAWS:	LP.1 Stations via Emnet	Operational	
FIN:	SOFEOC	Operational	
Satellite Phones:	MSAT 888-890-5178 or Iridium 480-263-8838	Operational	
Website:	http://www.floridadisaster.org	Operational	

Users wishing to subscribe (approval pending) to this distribution list, register at:

https://public.govdelivery.com/accounts/FLDEM/subscriber/new?topic_id=Morning_SITREP