



Florida Division of Emergency Management State Watch Office

Morning Situation Report

Saturday, May 31, 2025



State Emergency Operations Center Activation Level

Level 2 Activation



SERT On-Call Personnel

Position	Personnel	Phone	Email
Operations Chief	Amy Godsey	(850) 519-8483	Amy.Godsey@em.myflorida.com
Watch Officer	Sam Walters	(850) 519-8638	Sam.Walters@em.myflorida.com
Duty Officer	Jay Griffin	(850) 524-4094	Kellen.Griffin-Jay@em.myflorida.com
Operations Officer- Day	Daniel Leader	(850) 815-4001	SWP@em.myflorida.com
Operations Officer- Swing	Zachary Remante	(850) 815-4001	SWP@em.myflorida.com
Operations Officer- Night	Matthew Peloso	(850) 815-4001	SWP@em.myflorida.com
Meteorologist	Caitlyn Gillespie	(850) 688-2119	Caitlyn.Gillespie@em.myflorida.com
Plans Chief	Kaylynn Perry	(850) 254-5657	Plans_Command@em.myflorida.com
Logistics Chief	Christina Goetzman	(850) 519-8581	Christina.Goetzman@em.myflorida.com
Human Services Director	Pam Hughes	(850) 528-5638	Pamela.Hughes@em.myflorida.com
Emergency Services	Tim Kenyon	(850) 591-7732	Tim.Kenyon@em.myflorida.com
Infrastructure Branch Director	Christina Goetzman	(850) 519-8581	Christina.Goetzman@em.myflorida.com
ESF 8 On-Call	Brandon Gore	(866) 786-4673	DLDOHDutyOfficers@flhealth.gov
Public Information Officer	Stephanie Hartman	(850) 570-3053	Stephanie.Hartman@em.myflorida.com
DEM Finance and Admin	Jeremy Smith	(850) 273-1273	Jeremy.Smith@em.myflorida.com



Response Regional Coordination Team



Team	County Location	Visits
Region 1: Jim Roberts	In Region	On-Call Status
Region 2: Willie Bouie	In Region	On-Call Status
Region 3: Glen Hammers	In Region	On-Call Status
Region 4: Tara Kostich	In Region	On-Call Status
Region 5: Austin Beeghly	In Region	On-Call Status
Region 6: Paul Siddall	Out of Service	Leave (See Coverage)
Region 7: Kathryn Hollenbeck	In Region	On-Call Status
Region 8: Mason Kozac	In Region	On-Call Status
Region 9: Vacant	N/A	N/A
Region 10: Claudia Baker	Broward	FIU Hurricane Expo

Region 6 Coverage Provided by Recovery Coordinator 7
Region 9 Coverage Provided by Recovery Coordinator 8

Status
Normal Operations
Out of Service / Unavailable



Recovery Regional Coordination Team

Team	County Location	Status / Activities
Region 1: Allison Blevins	In Region	Off & Monitoring
Region 2: Justin Lazzara	In Region	Off & Monitoring
Region 3: Vacant	N/A	See Coverage
Region 4: Joshua Saunders	In Region	Off & Monitoring
Region 5: Elizabeth Caison	Lake	Hurricane Season Expo
Vacant	N/A	See Coverage
Region 6: Vacant		
Region 7: Antonio Zapata	Broward	Executive Team Support / Hurricane Expo
Region 8: Ja-Pheth Butler-Miller	In Region	Off & Monitoring
Region 9: Jacob Ginsberg	Charlotte	Hurricane Season Expo
Region 10: Vacant	N/A	See Coverage

Region 3 Coverage Provided by Recovery Coordinator 2 & 4

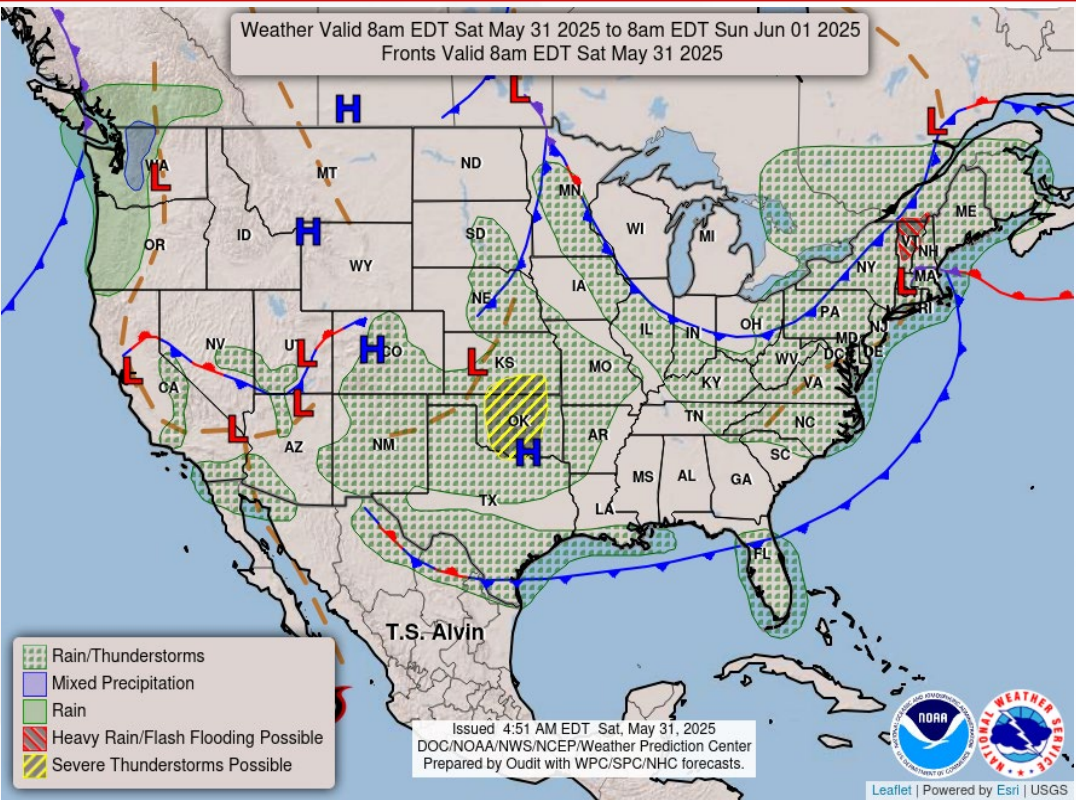
Region 6 Coverage Provided by Recovery Coordinator 5

Region 10 Coverage Provided by Recovery Coordinator 8

Status
Normal Operations
In Region / Delayed Response
Deployed / Delayed Response
Out of Service / Unavailable

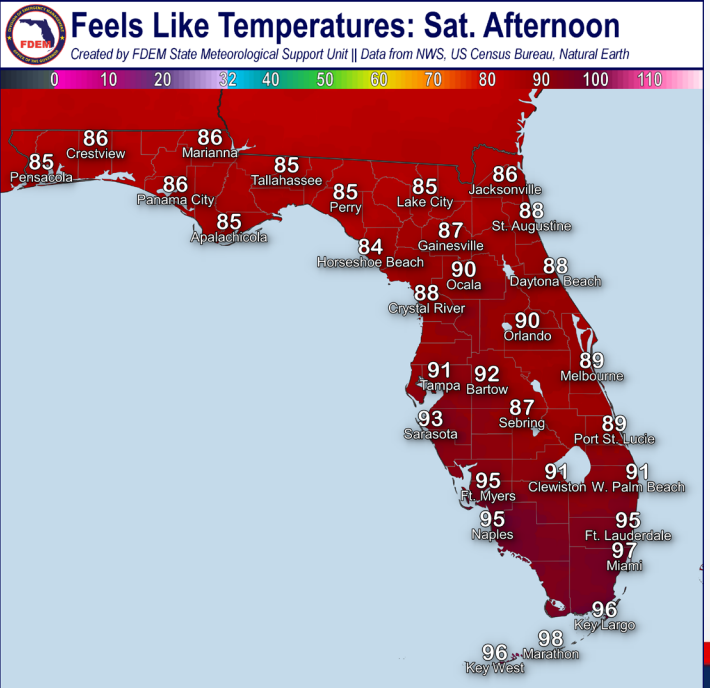
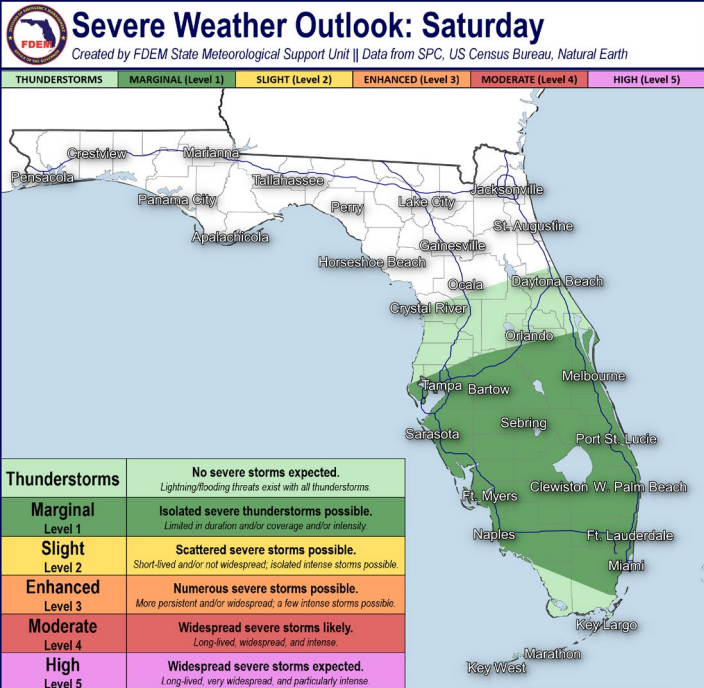


Meteorology Summary



Today's Weather Map

Threat	R1	R2	R3	R4	R5	R6	R7	R8	R9	R10
Lightning					M	M	H	H	H	H
Tornado										
Damaging Wind					L	L	L	L	L	L
Hail										
Flash Flooding								L		L
Excessive Heat							L	L		L
Wildfire										
Fog (Overnight)										
Rip Currents	M	H	L	L	M	M		M	M	L
Lake Okeechobee Elevation:	10.96 ft. (2.18 ft. <u>Below Normal</u>)									
Keetch-Byram Drought Index:	367 (-13) on a scale from 0 (very moist) to 800 (very dry)									





Meteorology Summary

Statewide Overview, Next 24 Hours:

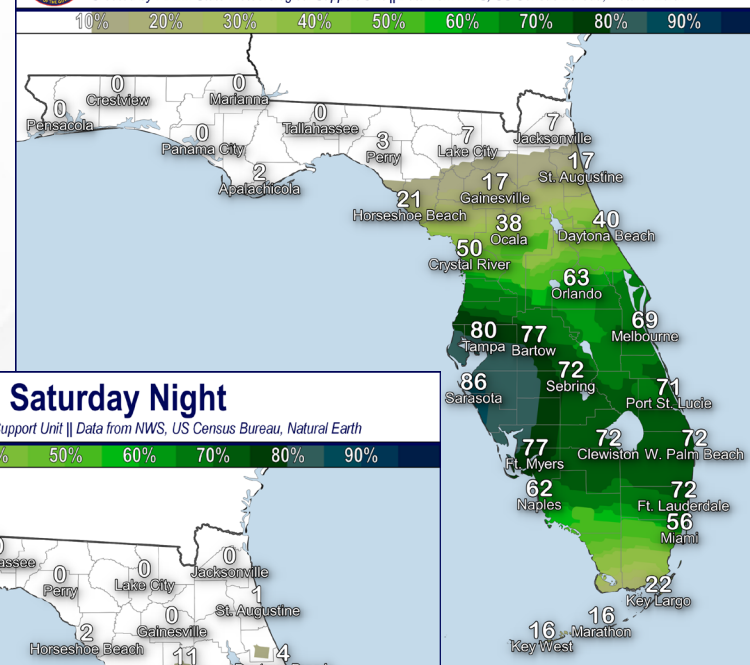
Rain chances shift to the Florida Peninsula as scattered to numerous showers and thunderstorms continue development along and ahead of our late season “cold” front (70-90% chance of rain). Current radar shows a broken line of showers and embedded thunderstorms advancing south of the I-4 corridor this morning, and this activity is expected to migrate further south into the Florida Peninsula through the daytime hours. Environmental conditions will be supportive of a few **strong to severe thunderstorms**, especially with the daily afternoon sea breeze interacting with the advancing frontal boundary. The Storm Prediction Center (SPC) is outlooking a **Marginal Risk (level 1 of 5) for Severe Weather** across portions of Central and South Florida today as thunderstorms will be capable of producing strong wind gusts (45-60 mph), frequent lightning, and downpours. While much of this rainfall will be welcomed across the drought-ridden Florida Peninsula, heavy rainfall rates will likely accompany the stronger and more organized thunderstorm activity; **nuisance flooding and ponding water** cannot be ruled out, especially for urban Southeast Florida corridors and low-lying/poor drainage areas. Afternoon high temperatures will reach the middle 80s to lower 90s across Central and South Florida, with a few coastal South Florida locations nearing **triple digit heat indices** prior to any rain relief this afternoon. Rain and thunderstorm activity will gradually subside this evening across the Florida Peninsula. However, unlike wintertime frontal systems, these warm season cold fronts struggle to advance southward of the I-4 corridor and become more stationary in nature. Showers and thunderstorms look to initiate before the Sunday sunrise once again across Central Florida (30-60% chance of rain). Low temperatures in the 60s and 70s can be expected, with the Florida Keys remaining above the 80-degree mark.

Sunny skies and near-zero rain chances return to North Florida today, with help from post-frontal northerly winds. While temperatures will remain warm in the middle to upper 80s, the drier airmass will keep heat index values more similar to their actual temperature. Comfortable and mild temperatures expected tonight, with low temperatures in the lower to middle 60s. A few interior North Florida locations, namely the Suwannee River Valley, could see a brief periods in the upper 50s by early Sunday morning!



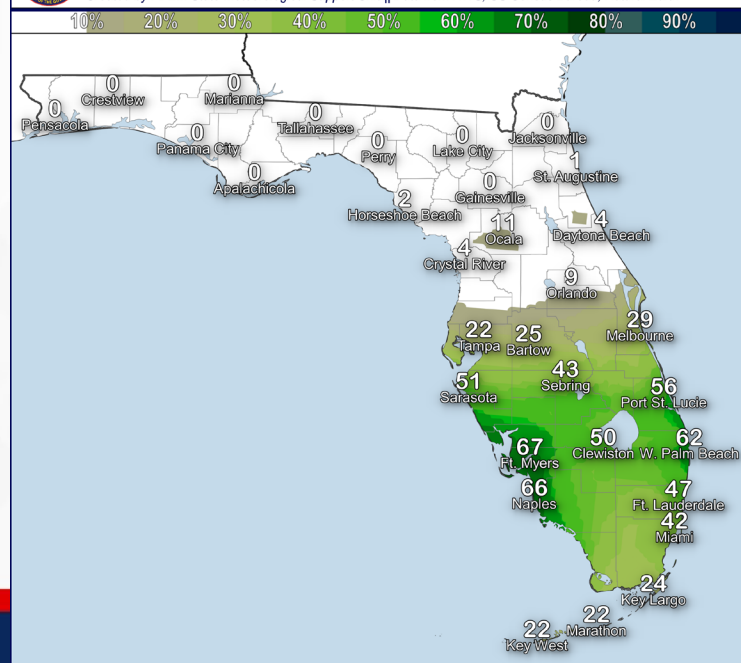
Chance of Rain: Saturday

Created by FDEM State Meteorological Support Unit || Data from NWS, US Census Bureau, Natural Earth



Chance of Rain: Saturday Night

Created by FDEM State Meteorological Support Unit || Data from NWS, US Census Bureau, Natural Earth



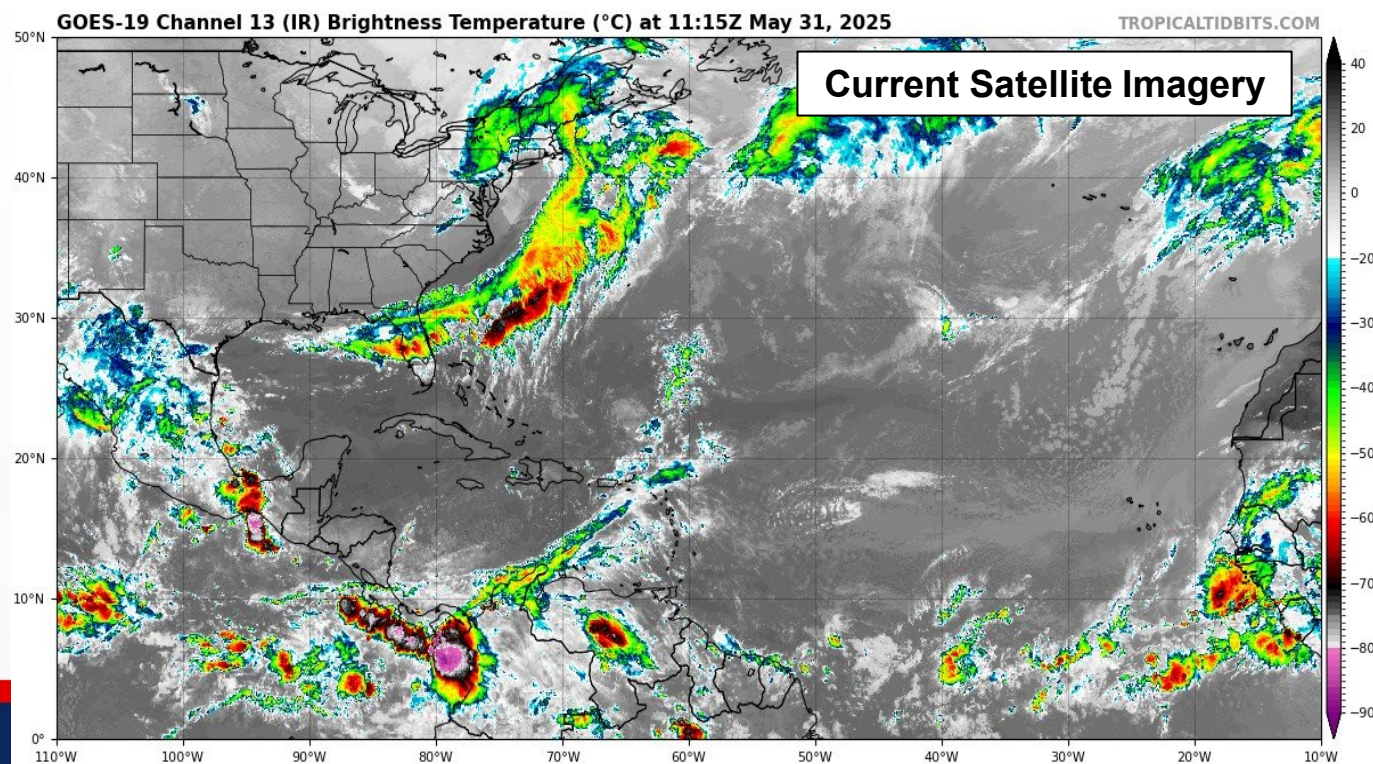
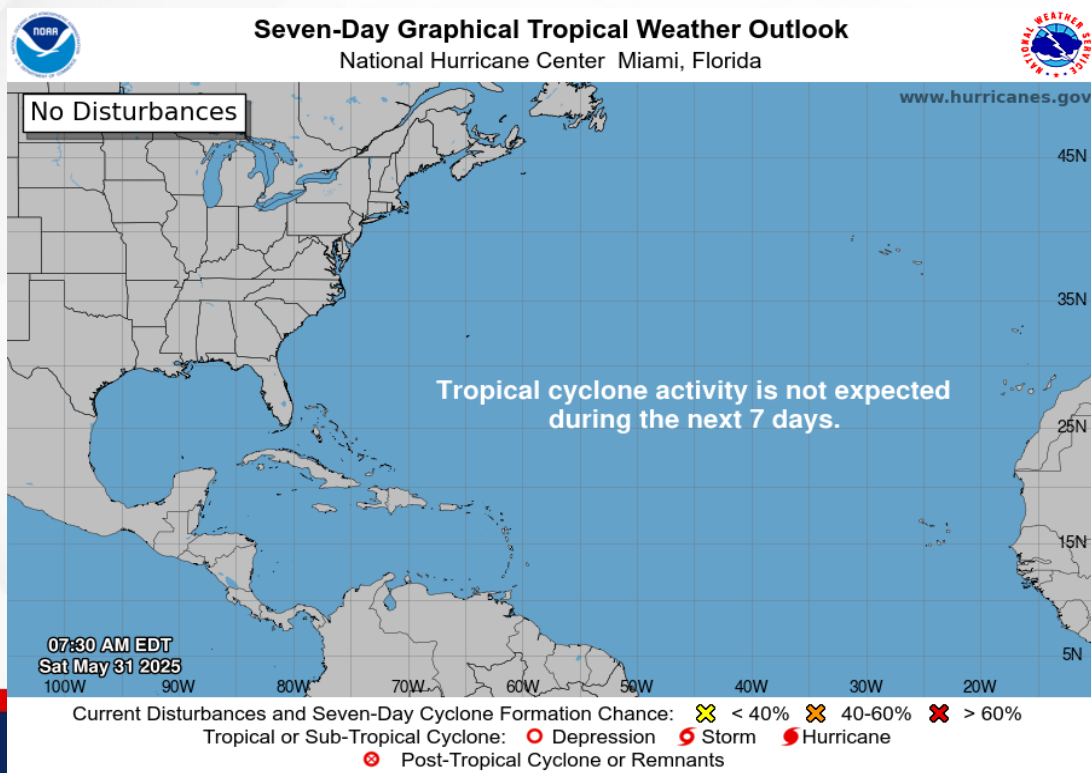


Tropical Weather

For the latest on the tropics, please visit the National Hurricane Center (NHC) at www.hurricanes.gov.

Tropical cyclone formation is ***not expected*** during the next 7 days in the Atlantic Basin.

The National Hurricane Center has started regular Tropical Weather Outlooks in advance of the official start of the Atlantic Hurricane Season. These outlooks show areas of potential tropical cyclone development in the next 48 hours and through the next 7 days. Outlooks are issued every 6 hours at 8am, 2pm, 8pm, and 2am ET, or as conditions warrant. The Atlantic Hurricane Season officially begins June 1.





Coastal Hazards & Hydrology

Rip Currents: A **moderate risk of rip currents** can be expected along most Florida beaches as a late season frontal system advances into the Florida Peninsula. A **localized high risk of rip currents** will be possible along portion of Gulf County. For the latest Rip Current Outlook, visit www.weather.gov/beach.

Marine Hazards: Wave heights of 1-3' can be expected along all Florida coastlines today.

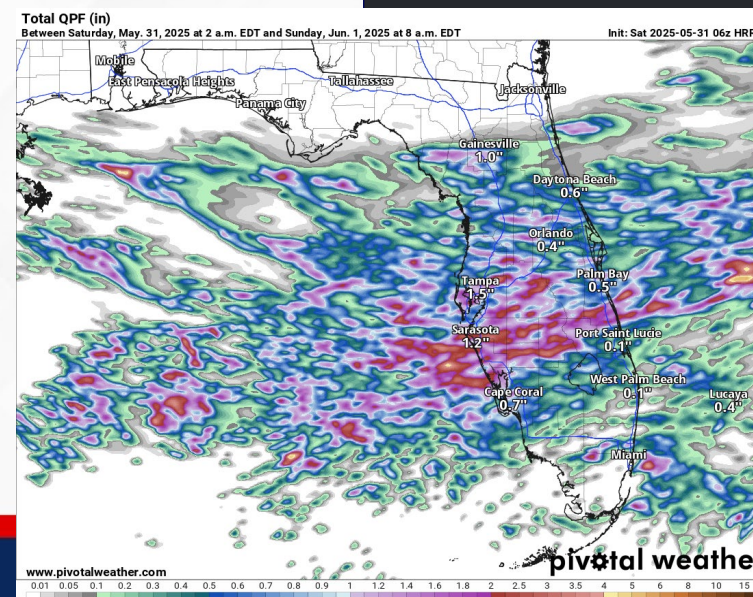
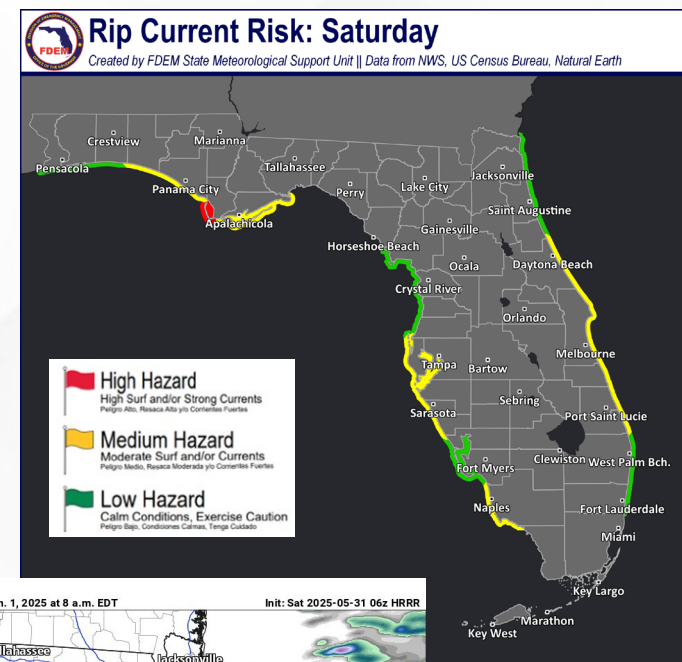
Red Tide has been observed at background levels in one sample from offshore Okaloosa County over the past week (valid 5/30).

Coastal Flooding: There is no risk for coastal flooding today.

Flash Flooding: There is no organized risk for flash flooding. As typical with our summertime thunderstorms, a quick 2-4" of rain cannot be ruled out within the stronger and more organized activity. With rainfall totals shifting to the Florida Peninsula this weekend, our attention returns to potential **nuisance flooding and ponding water** across urban corridors and low-lying/poor drainage areas.

Riverine Flooding: There are no river flooding concerns across Florida. For more information, visit the River Forecast Center.

Lake Okeechobee's average elevation is 10.96 feet, which is within the operational band and is 2.18 feet below normal for this time of year.





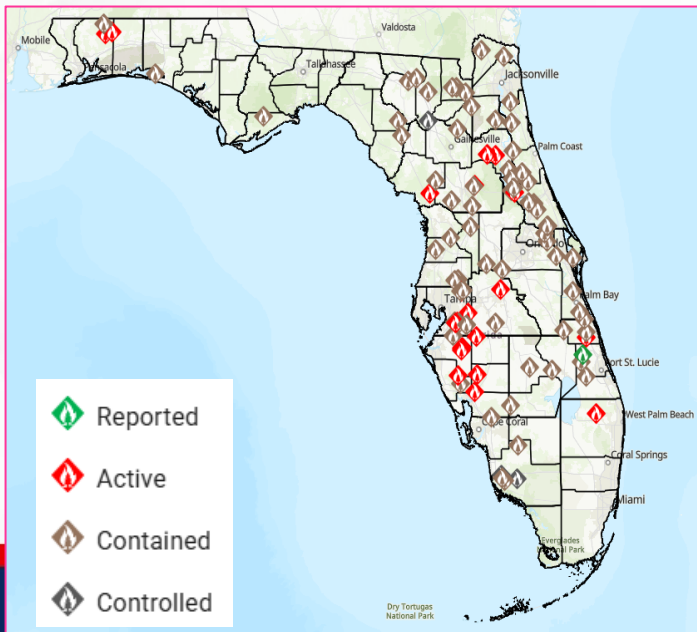
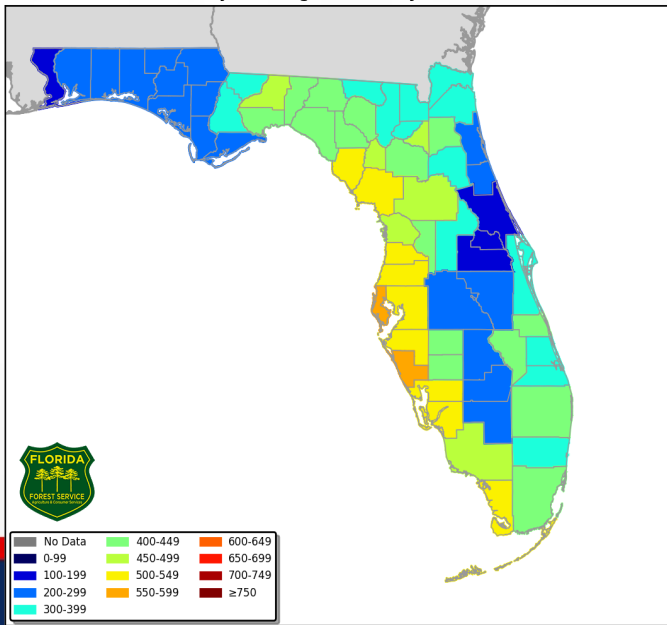
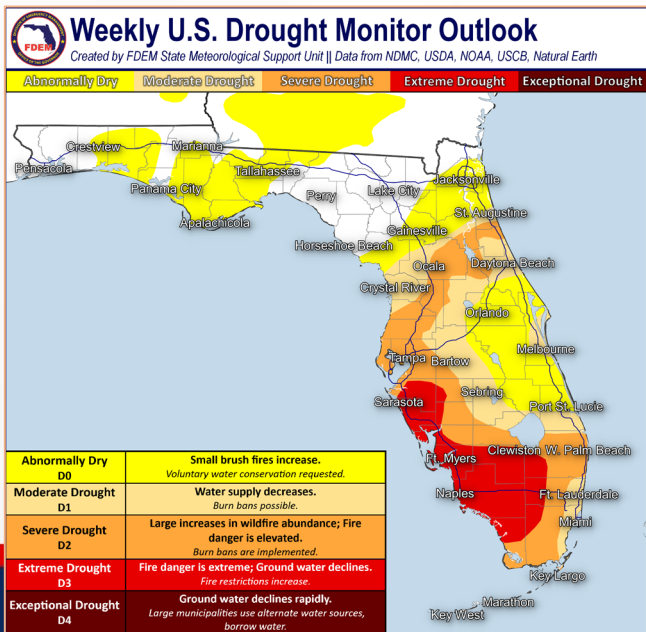
Drought & Fire Weather

Fire Weather: A drier airmass returns to North Florida in the wake of the late season “cold front,” with relative humidity values returning to the **lower to middle 30s** this afternoon; however, recent beneficial rainfall and light winds will keep the overall wildfire threat **very low**. Relative humidity values will continue to remain above critical thresholds throughout the Florida Peninsula, courtesy of widespread elevated rain chances (70-90% chance of rain). *Thunderstorms will be capable of producing frequent lightning and erratic winds.* The wildfire threat remains low today; however, lightning may ignite new wildfires over Florida Peninsula locations that have endured long-term drought/dry soils and vegetation. **Mandatory Burn Bans** are in effect for **13** counties in the Florida Peninsula (Charlotte, Collier, DeSoto, Duval, Glades, Hendry, Hillsborough, Lee, Manatee, Osceola, Pasco, Pinellas, and Sarasota). According to the [Florida Forest Service](#), there are 95 active wildfires across the state burning approximately 4,165 acres.

Drought: The Sunshine State's rainy season appears to be underway as thunderstorms with locally heavy rainfall brought drought relief to East-Central Florida. However, the welcomed rainfall occurred east of the western Florida Peninsula and resulted in a 1-category degradation on the recent Drought Monitor (5/29). **Severe drought (level 2 of 4)** continues across portions of the St. Johns and Santa Fe River basins as well as the western and southern Florida Peninsula, **extreme drought (level 3 of 4)** continues to affect Southwest Florida and the Everglades where water levels are very low. **Above normal temperatures** and **above normal rainfall** can be expected across Florida over the next 6-10 days as the typical summertime pattern returns.

The Keetch-Byram Drought Index average for Florida is **367 (-13)** on a scale from 0 (very wet) to 800 (very dry). There are **11** Florida counties (Charlotte, Dixie, Hernando, Hillsborough, Lee, Levy, Manatee, Monroe, Pasco, Pinellas, and Sarasota) with an average KBDI over 500 (drought/increased fire danger).

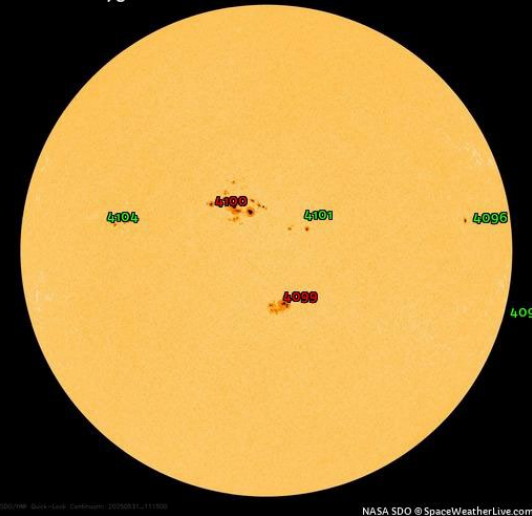
Keetch Byram Drought Index (KBDI)
County Averages for May 30, 2025





Space Weather

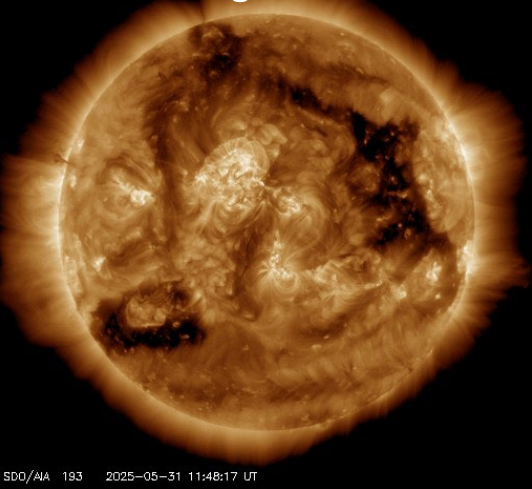
HMI Intensitygram



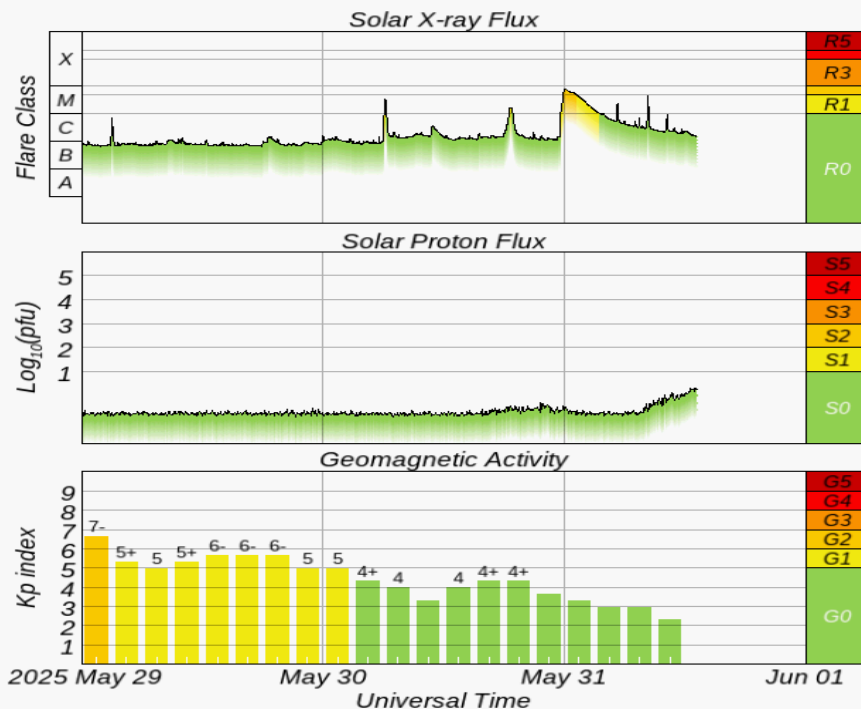
NASA SDO @ SpaceWeatherLive.com

Current Sunspots

Earth-facing Coronal Holes



SDO/AIA 193 2025-05-31 11:48:17 UT



Solar Flare Risk	Active Watches & Warnings	Past 24 hours
M-class: 50%	Geomagnetic Storm: None	M8 Solar Flare
X-class: 10%	Radiation Storm: None	R2 Radio Blackouts

48-Hour Geomagnetic Forecast	
5/31	6/1
Max Kp= 5 (G1)	Max Kp= 5 (G1)
Chance of minor activity = 25% severe activity = 5%	Chance of minor activity = 25% severe activity = 5%

Space Weather: The chance for strong (M-class) solar flare activity persists again today, on the heels of sunspot 4100's large M8.2 solar flare last evening. This solar flare event lasted for more than 3 hours and produced a Coronal Mass Ejection (CME). There is a slight chance for a more significant solar flare (X-class), with minor to moderate radio blackouts likely. Enhanced solar wind conditions are expected again today, with active G1 (minor) geomagnetic storming likely. There is a chance for a locally stronger (G2-3G3) geomagnetic storm later in the forecast period and into Sunday as impacts from yesterday's CME arrive; however, the overall space weather threat to Florida remains very low.



SWO Communications Systems & Contact Information

Equipment	Contact	Status	Comments
Phone:	800-320-0519, 850-815-4001, 850-591-0071 (Backup Cell)	Operational	
Backup Landline:	850-487-3234, 850-487-3228	Operational	
Fax:	850-815-4979	Operational	
Email:	SWP@em.myflorida.com	Operational	
SWO Tracker:	https://apps.floridadisaster.org/SWO/	Operational	
SLERS:	DEM Statewide	Operational	
FNARS:	WGY974	Operational	
Federal NAWAS:	State Watch Office	Operational	
EMnet Message:	FL.000- State Watch Office	Operational	
EMnet Voice:	FL SWP- State Watch Office	Operational	
IPAWS:	LP.1 Stations via Emnet	Operational	
FIN:	SOFEOC	Operational	
Satellite Phones:	MSAT 888-890-5178 or Iridium 480-263-8838	Operational	
Website:	http://www.floridadisaster.org	Operational	

Users wishing to subscribe (approval pending) to this distribution list, register at:

https://public.govdelivery.com/accounts/FLDEM/subscriber/new?topic_id=Morning_SITREP