



Florida Division of Emergency Management State Watch Office

Morning Situation Report

Friday, May 30, 2025



State Emergency Operations Center Activation Level

Level 2 Activation



SERT On-Call Personnel

Position	Personnel	Phone	Email
Operations Chief	Amy Godsey	(850) 519-8483	Amy.Godsey@em.myflorida.com
Watch Officer	Sam Walters	(850) 519-8638	Sam.Walters@em.myflorida.com
Duty Officer	Jay Griffin	(850) 524-4094	Kellen.Griffin-Jay@em.myflorida.com
Operations Officer- Day	Daniel Leader	(850) 815-4001	SWP@em.myflorida.com
Operations Officer- Swing	Zachary Remante	(850) 815-4001	SWP@em.myflorida.com
Operations Officer- Night	Jim Lawhon	(850) 815-4001	SWP@em.myflorida.com
Meteorologist	Caitlyn Gillespie	(850) 688-2119	Caitlyn.Gillespie@em.myflorida.com
Plans Chief	Kaylynn Perry	(850) 254-5657	Plans_Command@em.myflorida.com
Logistics Chief	Christina Goetzman	(850) 519-8581	Christina.Goetzman@em.myflorida.com
Human Services Director	Pam Hughes	(850) 528-5638	Pamela.Hughes@em.myflorida.com
Emergency Services	Tim Kenyon	(850) 591-7732	Tim.Kenyon@em.myflorida.com
Infrastructure Branch Director	Christina Goetzman	(850) 519-8581	Christina.Goetzman@em.myflorida.com
ESF 8 On-Call	Brandon Gore	(866) 786-4673	DLDOHDutyOfficers@flhealth.gov
Public Information Officer	Stephanie Hartman	(850) 570-3053	Stephanie.Hartman@em.myflorida.com
DEM Finance and Admin	Jeremy Smith	(850) 273-1273	Jeremy.Smith@em.myflorida.com



Response Regional Coordination Team



Team	County Location	Visits
Region 1: Jim Roberts	Gadsden	Office Admin
Region 2: Willie Bouie	Wakulla, Leon	SERT/County Anticipated Need Assessment / Response Mtg / Dashboard UAT
Region 3: Glen Hammers	Suwannee, Columbia	Logistics Meeting
Region 4: Tara Kostich	Clay	CHEMPACK TTX
Region 5: Austin Beeghly	Seminole	FSE Hurricane Exercise
Region 6: Paul Siddall	Out of Service	Leave (See Coverage)
Region 7: Kathryn Hollenbeck	Polk	EMPA/G Desktop Monitoring Review (Desoto) / Office Admin
Region 8: Mason Kozac	Palm Beach	Executive Team Support
Region 9: Vacant	N/A	N/A
Region 10: Claudia Baker	Broward, Miami-Dade	EM Visits

Region 6 Coverage Provided by Recovery Coordinator 7

Region 9 Coverage Provided by Recovery Coordinator 8

Status

Normal Operations

Out of Service / Unavailable



Recovery Regional Coordination Team

Team	County Location	Status / Activities
Region 1: Allison Blevins	In Region	Off & Monitoring
Region 2: Justin Lazzara	Leon	End of Month Admin
Region 3: Vacant	N/A	See Coverage
Region 4: Joshua Saunders	Clay	DOH ChemPack TTX
Region 5: Elizabeth Caison	Hillsborough	Instructing FL-601
Vacant	N/A	See Coverage
Region 6: Vacant		
Region 7: Antonio Zapata	Hillsborough	Co-instructing FL-601
Region 8: Ja-Pheth Butler-Miller	Palm Beach	FAU Meeting
Region 9: Jacob Ginsberg	Polk	Equipment & Material Pickup
Region 10: Vacant	N/A	See Coverage

Region 3 Coverage Provided by Recovery Coordinator 2 & 4

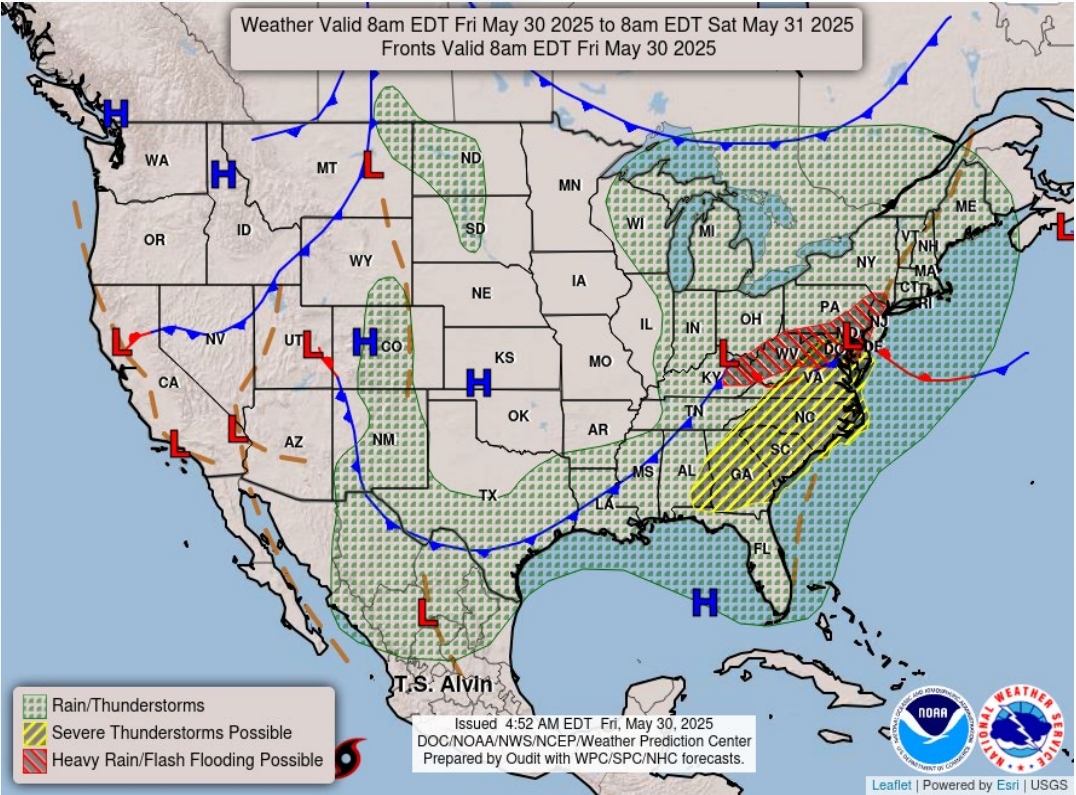
Region 6 Coverage Provided by Recovery Coordinator 5

Region 10 Coverage Provided by Recovery Coordinator 8

Status
Normal Operations
In Region / Delayed Response
Deployed / Delayed Response
Out of Service / Unavailable

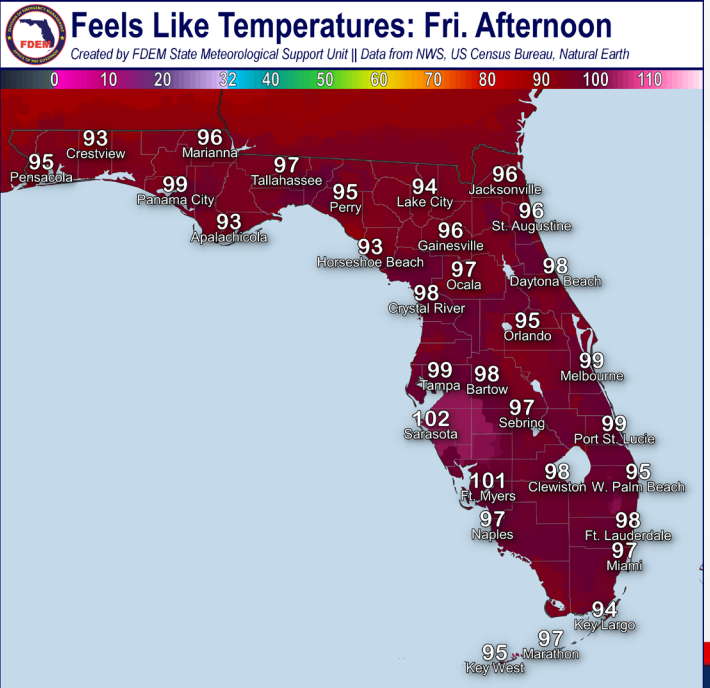
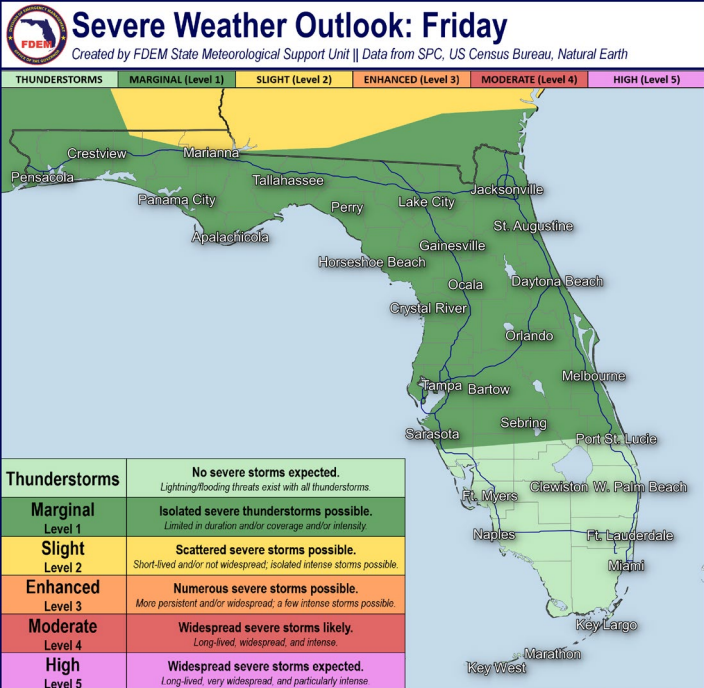


Meteorology Summary



Today's Weather Map

Threat	R1	R2	R3	R4	R5	R6	R7	R8	R9	R10
Lightning	M	M	M	M	H	M	M	H	M	M
Tornado										
Damaging Wind	L	L	L	L	L	L	L	L	L	L
Hail	L	L	L	L						
Flash Flooding										
Excessive Heat	L	L	L	L	L	M	M	L	L	L
Wildfire										
Fog (Overnight)										
Rip Currents	H	M	L	L	M	L		M	L	L
Lake Okeechobee Elevation:	10.97 ft. (2.17 ft. <u>Below</u> Normal)									
Keetch-Byram Drought Index:	380 (-3) on a scale from 0 (very moist) to 800 (very dry)									





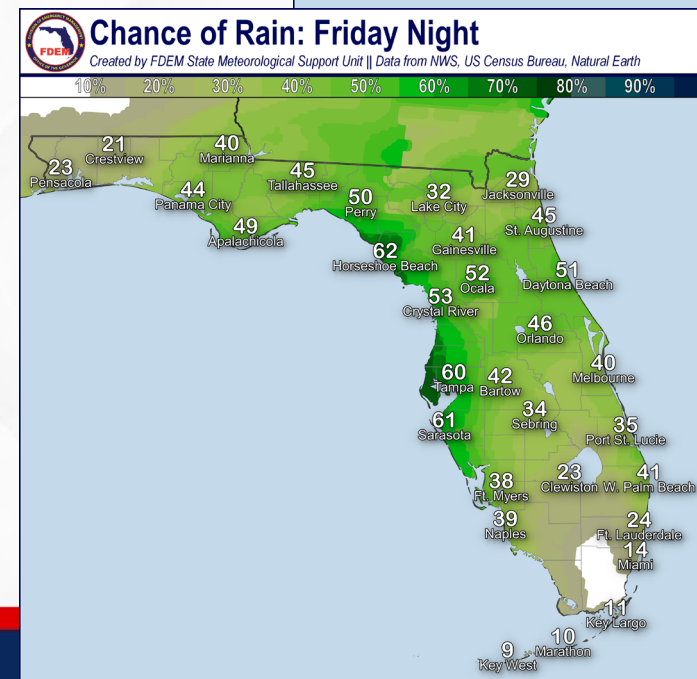
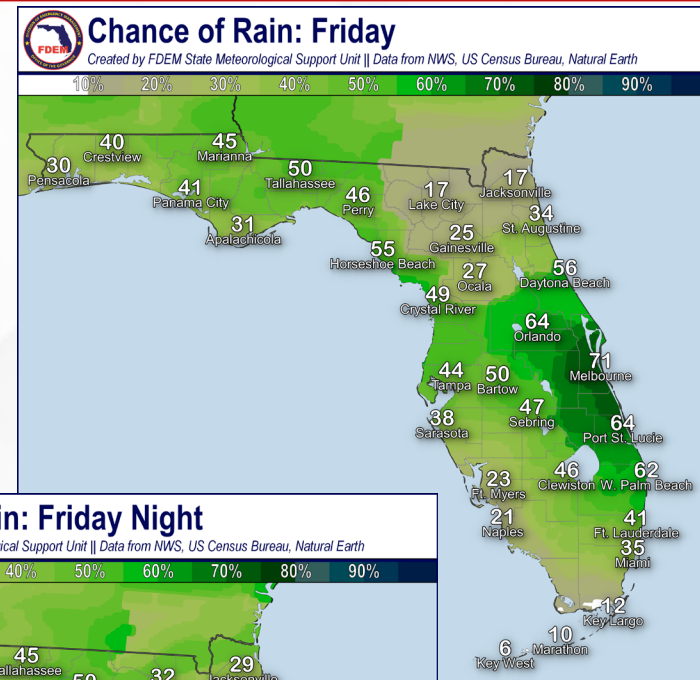
Meteorology Summary

Statewide Overview, Next 24 Hours:

Scattered to numerous showers and thunderstorms can be expected across the Sunshine State once again today, courtesy of moisture-filled westerly to southwesterly flow (45-70% chance of rain). Thunderstorms are beginning to move onshore the Florida West Coast this morning and will maximize in coverage and intensity through the afternoon hours as a late season frontal boundary interacts with the daily sea breeze. There is a **Marginal Risk (level 1 of 5) for Severe Weather** outlooked throughout North and Central Florida; however, as typical with summertime activity, any thunderstorm that develops will be capable of producing gusty winds (45-60 mph), frequent lightning, instances of hail, and heavy downpours. Given the recent return of Florida's wet season, soils are becoming increasingly saturated (away from Southwest Florida); **locally heavy downpours** may accompany thunderstorms this afternoon and lead to areas of **nuisance flooding and ponding water**, especially for low-lying and poor drainage areas.

Afternoon high temperatures will rise into the upper 80s to lower 90s statewide, with **triple digit heat indices (98 to 103-degrees)** developing throughout much of Florida. A few West Florida locations may briefly reach **Heat Advisory (near 105-degrees)** criteria prior to any rain relief this afternoon.

Rain chances remain elevated overnight as our late season "cold" front advances southeastward to the Florida Peninsula (40-60% chance of rain). Winds shift out of the north and northwest along the I-10 corridor overnight in the wake of the boundary, allowing for comfortable low temperatures in the 60s. Elsewhere across the state, low temperatures will remain in the 70s and 80s. A few interior Florida locations may see **patchy fog and low clouds** form tonight into Saturday morning; however, widespread fog development is not anticipated.



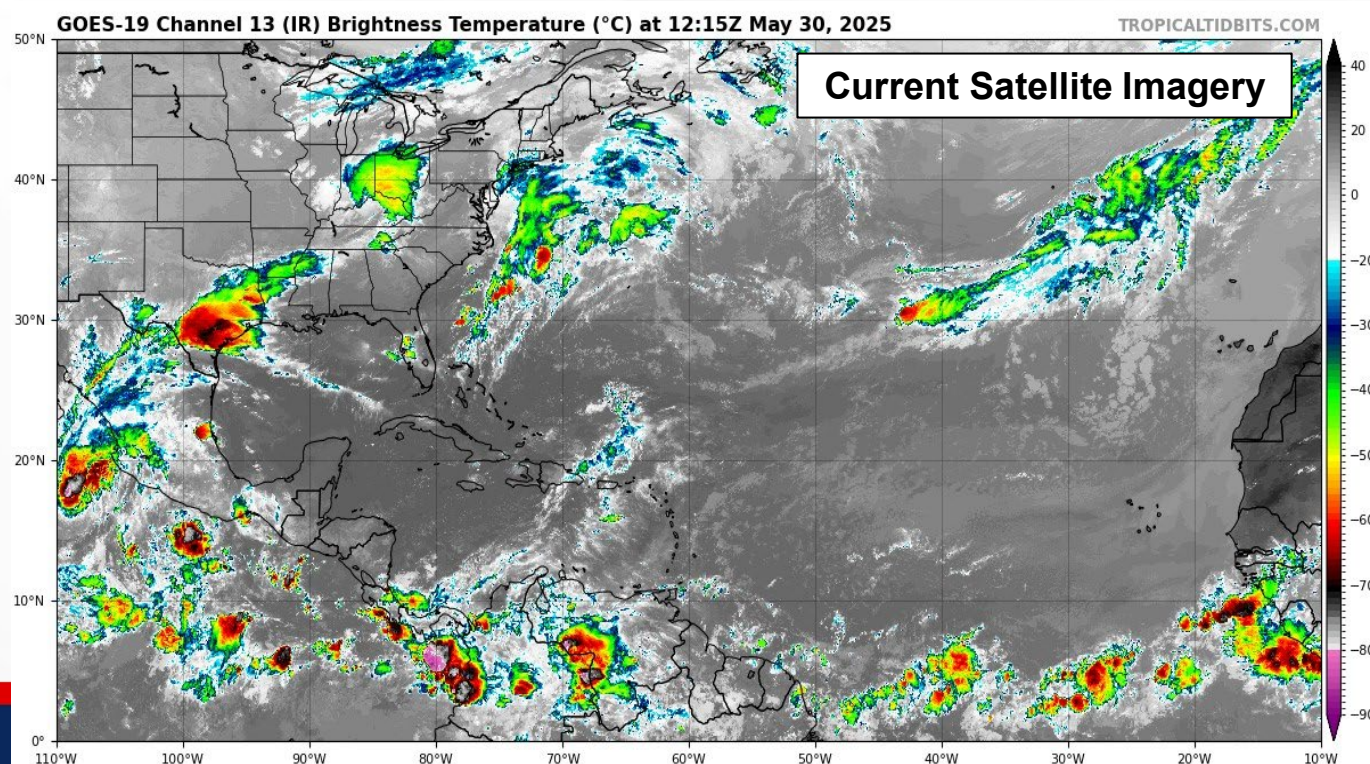
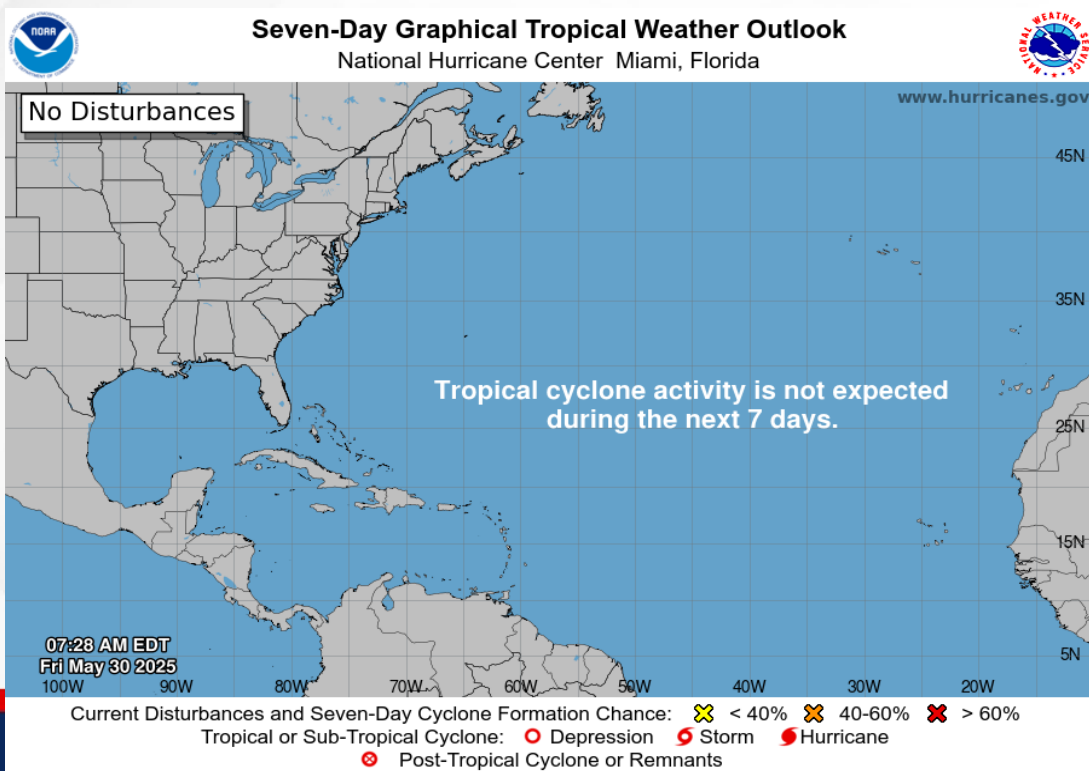


Tropical Weather

For the latest on the tropics, please visit the National Hurricane Center (NHC) at www.hurricanes.gov.

Tropical cyclone formation is ***not expected*** during the next 7 days in the Atlantic Basin.

The National Hurricane Center has started regular Tropical Weather Outlooks in advance of the official start of the Atlantic Hurricane Season. These outlooks show areas of potential tropical cyclone development in the next 48 hours and through the next 7 days. Outlooks are issued every 6 hours at 8am, 2pm, 8pm, and 2am ET, or as conditions warrant. The Atlantic Hurricane Season officially begins June 1.





Coastal Hazards & Hydrology

Rip Currents: Southerly winds will lead to a **moderate to high risk of rip currents** along most Florida Panhandle beaches today, with a **moderate risk of rip currents** residing along the Space and Treasure Coasts. Low risk conditions can be expected along Northeast Florida, Southeast Florida, and West Coast beaches. For the latest Rip Current Outlook, visit www.weather.gov/beach.

Marine Hazards: Wave heights of 1-2' can be expected along all Florida coastlines today, locally higher breakers in the surf zone of 3' will be possible at Florida East Coast beaches.

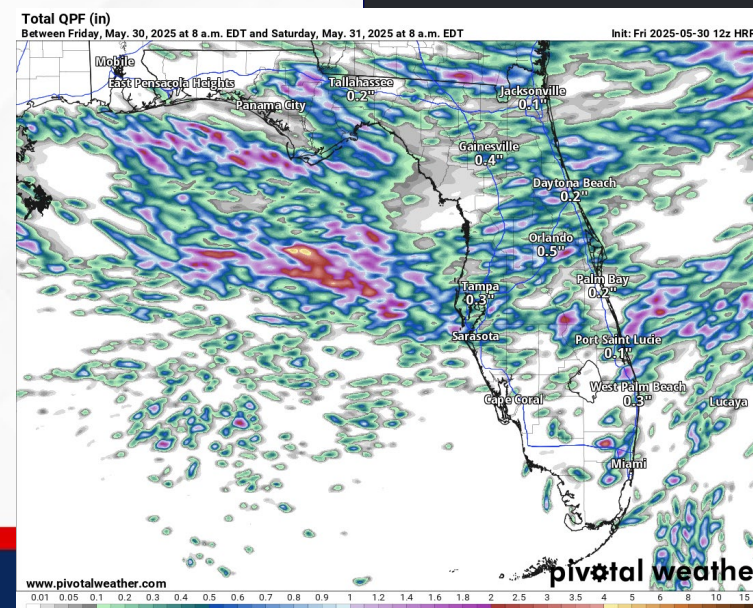
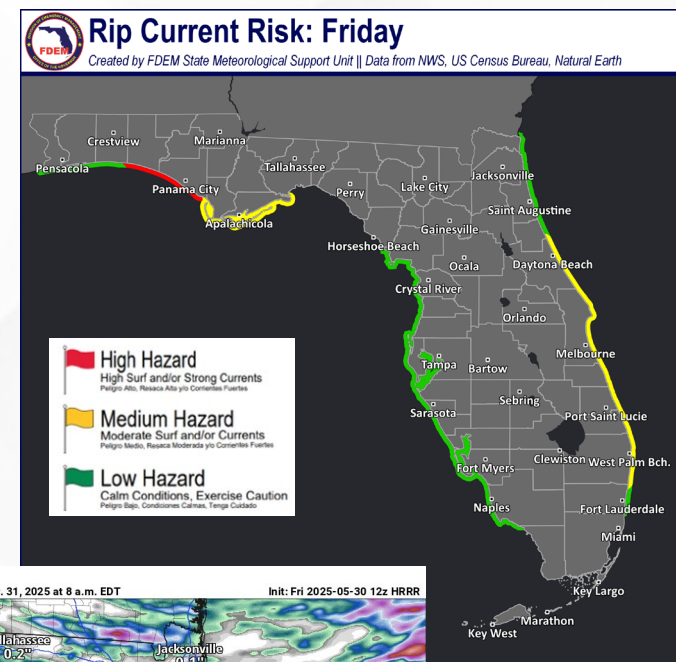
Red Tide has been observed at background levels in samples collected from the Florida Gulf Coast over the past week (valid 5/23). This includes the following counties: Sarasota, Monroe, and Pasco.

Coastal Flooding: There is no risk for coastal flooding today.

Flash Flooding: There is no organized risk for flash flooding. Given the recent return of the Florida wet season, soils are becoming increasingly saturated (away from Southwest Florida); any summertime thunderstorm will be capable of producing a quick 2-4" of rain and could lead to **nuisance flooding and ponding water** across low-lying/poor drainage areas.

Riverine Flooding: There are no river flooding concerns across Florida. We may see additional rises along the quick-response rivers, creeks, and streams along the Florida Panhandle; however, riverine flooding is not anticipated. For more information, visit the River Forecast Center.

Lake Okeechobee's average elevation is 10.97 feet, which is within the operational band and is 2.17 feet below normal for this time of year.





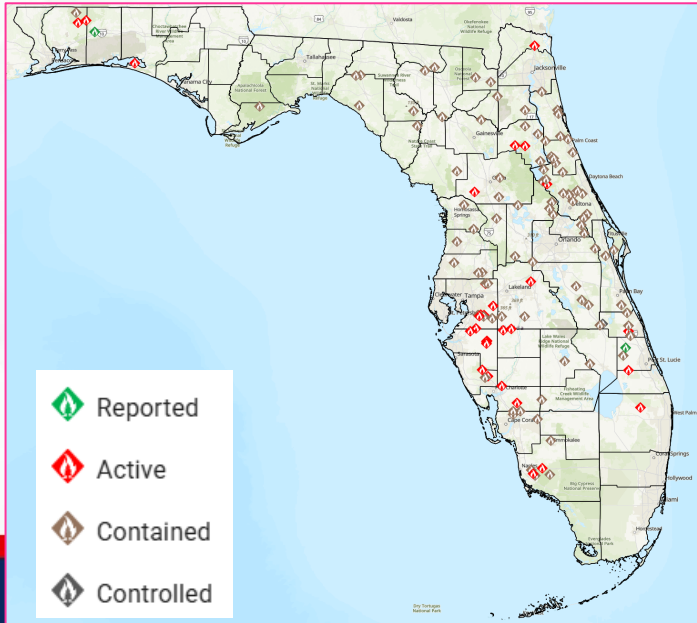
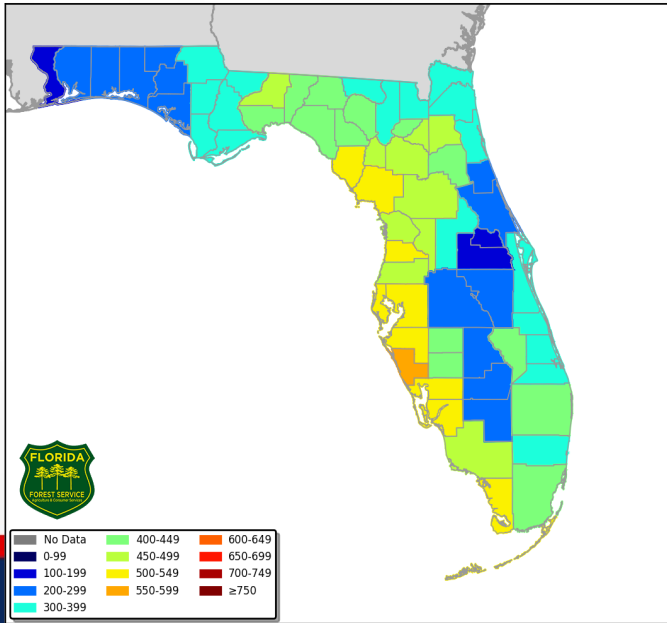
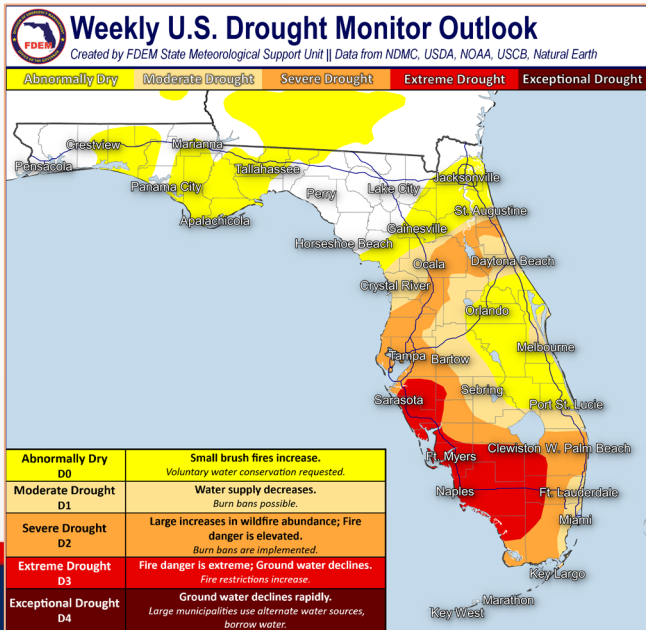
Drought & Fire Weather

Fire Weather: Relative humidity values will continue to remain above critical thresholds statewide. Widespread elevated rain chances can be expected nearly statewide (45-70% chance of rain). *Thunderstorms will be capable of producing frequent lightning and erratic winds.* The wildfire threat remains low today; however, lightning may ignite new wildfires over Florida Peninsula locations that have endured long-term drought/dry soils and vegetation. **Mandatory Burn Bans** are in effect for **13** counties in the Florida Peninsula (Charlotte, Collier, DeSoto, Duval, Glades, Hendry, Hillsborough, Lee, Manatee, Osceola, Pasco, Pinellas, and Sarasota). Areas of **patchy fog and low clouds** cannot be ruled out across interior portions of North Florida tonight. According to the [Florida Forest Service](#), there are 126 active wildfires across the state burning approximately 5,690 acres.

Drought: The Sunshine State's rainy season appears to be underway as thunderstorms with locally heavy rainfall brought drought relief to East-Central Florida. However, the welcomed rainfall occurred east of the western Florida Peninsula and resulted in a 1-category degradation on the recent Drought Monitor (5/29). **Severe drought (level 2 of 4)** continues across portions of the St. Johns and Santa Fe River basins as well as the western and southern Florida Peninsula, **extreme drought (level 3 of 4)** continues to affect Southwest Florida and the Everglades where water levels are very low. **Above normal temperatures** and **above normal rainfall** can be expected across Florida over the next 6-10 days as the typical summertime pattern returns.

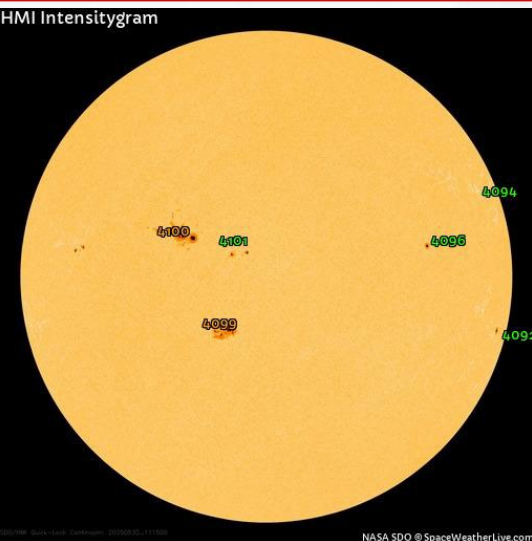
The Keetch-Byram Drought Index average for Florida is **380 (-3)** on a scale from 0 (very wet) to 800 (very dry). There are **9** Florida counties (Charlotte, Dixie, Hillsborough, Lee, Levy, Manatee, Monroe, Pinellas, and Sarasota) with an average KBDI over 500 (drought/increased fire danger).

Keetch Byram Drought Index (KBDI)
County Averages for May 29, 2025

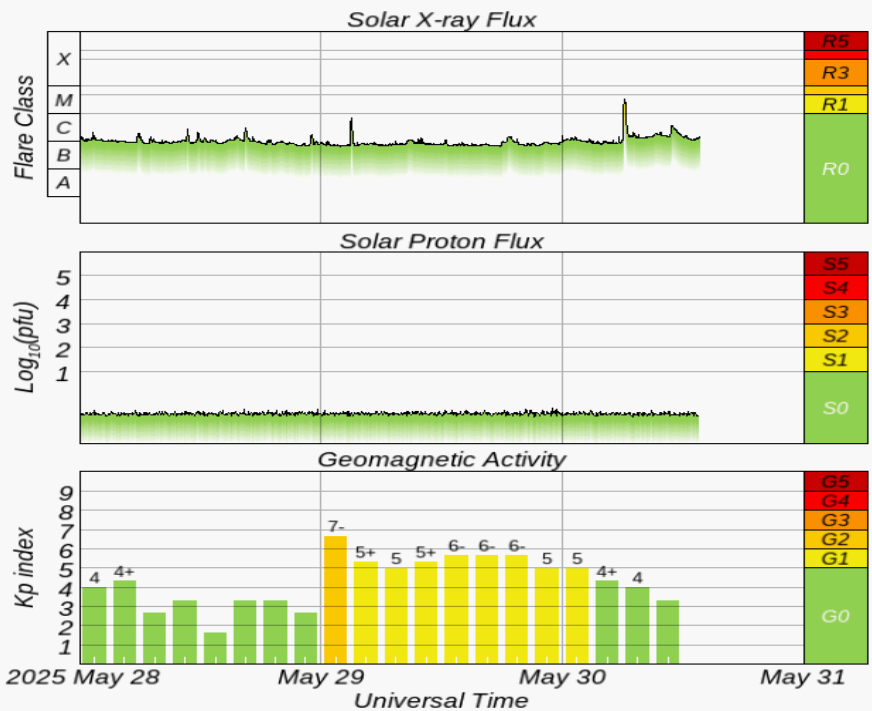
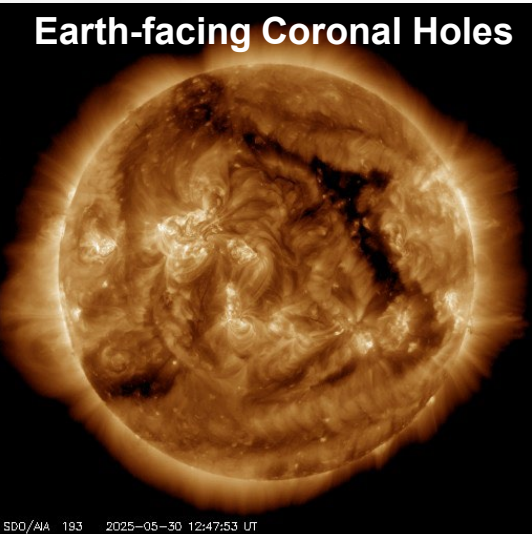




Space Weather



Current Sunspots



Solar Flare Risk	Active Watches & Warnings	Past 24 hours
M-class: 50%	Geomagnetic Storm: None	M3 Solar Flare
X-class: 10%	Radiation Storm: None	R1 Radio Blackouts

48-Hour Geomagnetic Forecast	
5/30	5/31
Max Kp= 6 (G2)	Max Kp= 5 (G1)
Chance of minor activity = 35% severe activity = 20%	Chance of minor activity = 25% severe activity = 5%

Space Weather: The chance for strong (M-class) solar flare activity persists as sunspot #4099 continues to grow. There is a slight chance for a more significant solar flare (X-class); however, minor to moderate (R1-R2) radio blackouts may accompany any stronger or more organized flare activity. Enhanced solar wind conditions are expected again today, with active G1-G2 (minor to moderate) geomagnetic storming likely. There is a chance for a locally stronger (G3) geomagnetic storm early in the forecast period; however, the overall space weather threat to Florida remains very low.



SWO Communications Systems & Contact Information

Equipment	Contact	Status	Comments
Phone:	800-320-0519, 850-815-4001, 850-591-0071 (Backup Cell)	Operational	
Backup Landline:	850-487-3234, 850-487-3228	Operational	
Fax:	850-815-4979	Operational	
Email:	SWP@em.myflorida.com	Operational	
SWO Tracker:	https://apps.floridadisaster.org/SWO/	Operational	
SLERS:	DEM Statewide	Operational	
FNARS:	WGY974	Operational	
Federal NAWAS:	State Watch Office	Operational	
EMnet Message:	FL.000- State Watch Office	Operational	
EMnet Voice:	FL SWP- State Watch Office	Operational	
IPAWS:	LP.1 Stations via Emnet	Operational	
FIN:	SOFEOC	Operational	
Satellite Phones:	MSAT 888-890-5178 or Iridium 480-263-8838	Operational	
Website:	http://www.floridadisaster.org	Operational	

Users wishing to subscribe (approval pending) to this distribution list, register at:

https://public.govdelivery.com/accounts/FLDEM/subscriber/new?topic_id=Morning_SITREP