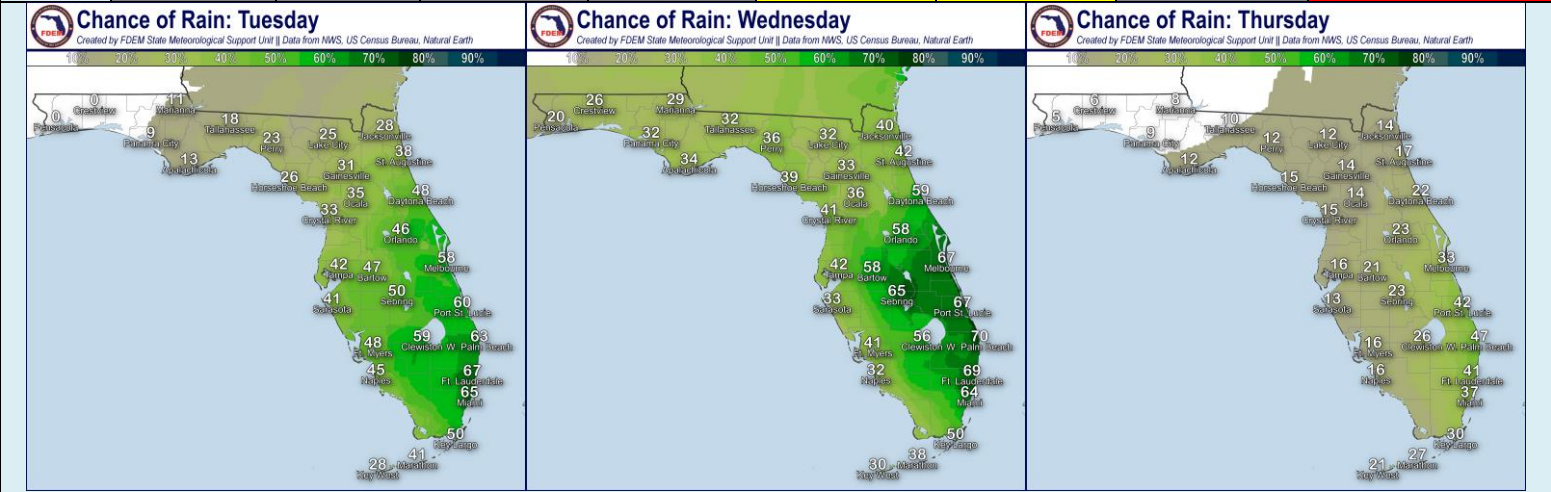
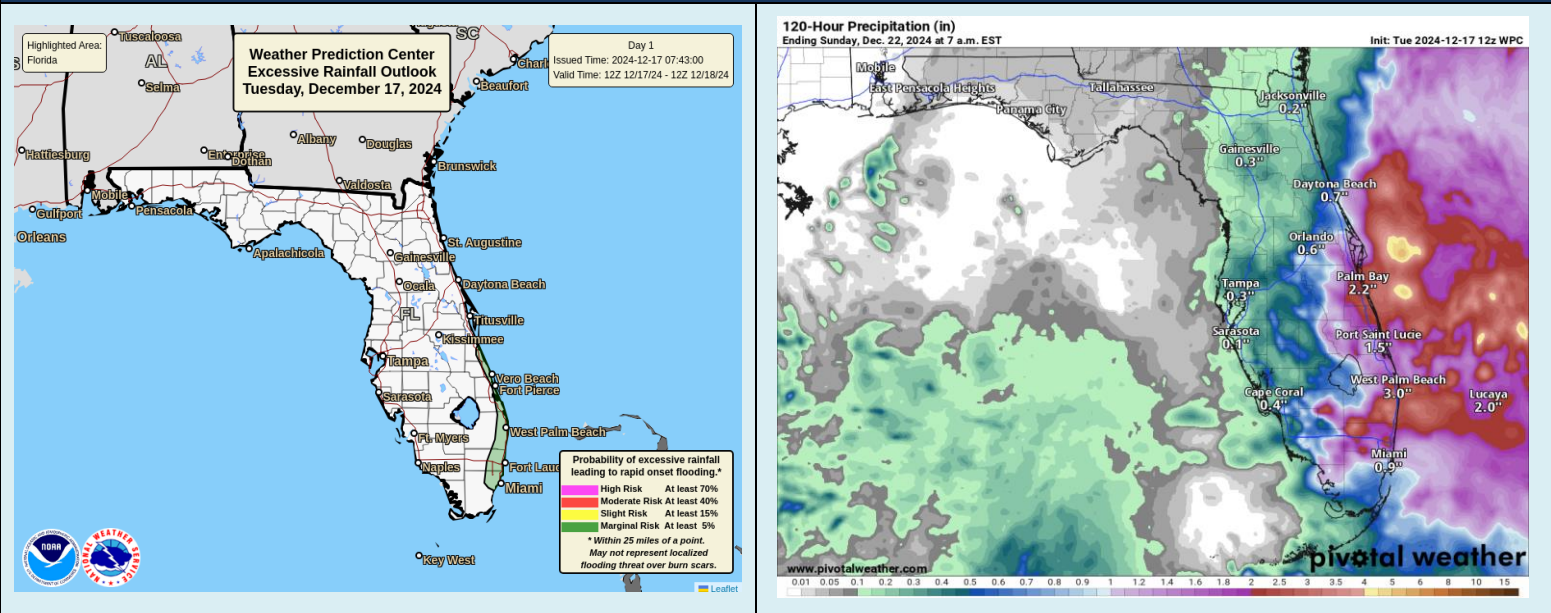


Tuesday, December 17, 2024				5-Day Statewide Weather Outlook				
No Threat		Low Threat		Moderate Threat		High Threat		
Day	Lightning	Tornado	Damaging Wind	Flash Flooding	Fire Weather	Freeze	Fog (Overnight)	Rip Currents
Tue	East-Central & South FL			Space and Treasure Coast			Northeast FL Suwannee Valley North & Central FL	East Coast Panhandle West Coast
Wed	Statewide			Locally East-Central & South Florida			Locally NE FL & Suwannee Valley Peninsula	East Coast Panhandle West Coast
Thu	Southeast FL			Iso. Treasure Coast & SE FL Coast				East Coast Panhandle & West-Central FL West Coast
Fri					North Florida	Locally N. Panhandle W. Panhandle		East-Central & Southeast FL Panhandle & West-Central FL Elsewhere
Sat					Panhandle & Int. Peninsula	Locally Panhandle & Big Bend		East-Central & Southeast FL Panhandle & West-Central FL Elsewhere



Forecast Low Temperatures: Tuesday, Wednesday and Thursday

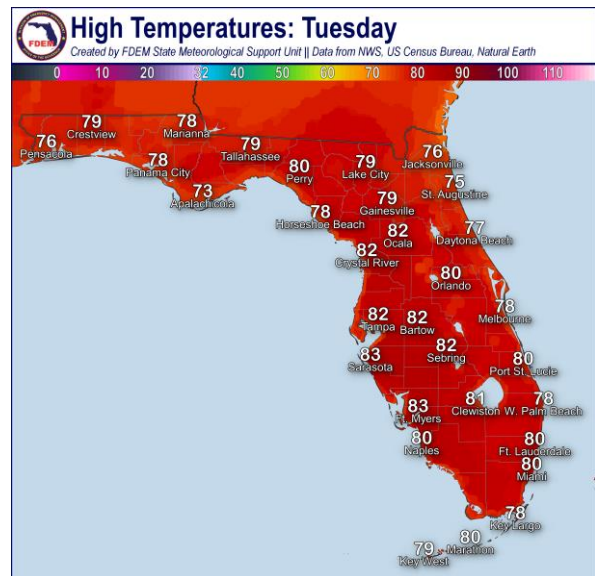


**...Active Weather Pattern Across Eastern Peninsula Bringing Much Needed Rain...Foggy Conditions Anticipated Each Morning Through Midweek...Next Cold Front Arrives Midweek Bringing Cooler and Drier Conditions Heading into the Weekend...Patchy Frost Possible Overnight Friday and Saturday For Portions of Panhandle and Big Bend; Temperatures Near or Below Freezing Saturday Night Across Portions of Panhandle...Sensitive Wildfire Conditions Return Statewide Saturday With Drier Conditions...**

### **Tuesday & Wednesday:**

**Widespread fog** has developed this morning throughout North and Central Florida Tuesday morning, with **areas of dense fog** throughout the Suwannee Valley and Northeast Florida. **Foggy conditions** will linger through the early to mid-morning hours before lifting and dissipating. High pressure will shift eastward towards the western Atlantic waters ahead of the next frontal system pushing across the Central U.S. An upper-level feature moving overhead may allow for isolated showers across portions of the Big Bend and Suwannee Valley late Tuesday morning and into the afternoon, but overall, mostly dry conditions will persist along the Panhandle (10-25% chance of rain). Throughout the evening and overnight hours, mostly dry conditions should return with a chance for a spotty shower drifting over the region. Along East Florida, onshore winds and an upper-level disturbance north of the Caribbean will bring scattered showers and embedded thunderstorms onshore and inland throughout the day (35-70% chance of rain). The greatest chance for shower and thunderstorm activity will be along the East Coast and the I-95 corridor; however, isolated showers and thunderstorms may shift westward throughout the Peninsula during the afternoon and evening hours. The Weather Prediction Center (WPC) is outlooking a **Marginal Risk (level 1 of 4) for Flash Flooding** along the Space and Treasure Coasts where multiple rounds of shower activity, some of which may be slow-moving, may be capable of producing **localized flash flooding** for coastal urban and low-lying/poor drainage areas. Showers and thunderstorms will continue throughout the evening and overnight hours along the I-95 corridor and drifting into the central Peninsula (30-65% chance of rain). Areas of **patchy to scattered fog** will likely develop overnight and early Wednesday morning throughout North and Central Florida, with **areas of locally dense fog** possible, due to calm conditions and elevated moisture ahead of the approaching cold front.

Much like the previous morning, **foggy conditions and low clouds** will gradually dissipate and lift throughout the morning hours across North and Central Florida. The next cold front will continue to gradually approach the Panhandle throughout the day on Wednesday; however, it will weaken as it does so. With moisture being pulled northward ahead of the front, there is an increasing chance for scattered showers and thunderstorms to develop Wednesday afternoon and evening (20-35% chance of rain). At this time, severe weather is not expected, but a **locally strong thunderstorm or two** capable of producing gusty winds and heavy downpours cannot be ruled out. Across the Peninsula, continued showers and embedded thunderstorms can be expected throughout the day with the help of abundant moisture flowing onshore and an upper-level feature moving overhead, with the greatest chance across East-Central and Southeast Florida (40-70% chance of rain). Similarly, severe weather is not expected throughout the Peninsula but a **locally strong thunderstorm or two** cannot be ruled out at times. With the active weather pattern for the last couple of days along the East-Central and Southeast Florida coast, **localized instances of flash flooding** cannot be ruled out. A few showers may linger into the late evening and overnight hours across the state as the front pushes through (25-65% chance of rain). Generally drier conditions will begin to move in across the Panhandle overnight as the front pushes southeastward through the rest of the state. **Areas of patchy to scattered fog** may develop overnight

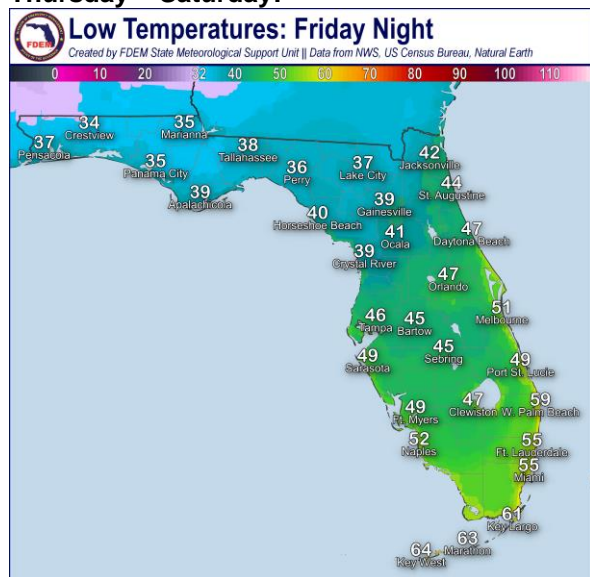




Wednesday and into Thursday morning ahead of the cold front throughout Northeast Florida and the Peninsula. **Locally dense fog** cannot be ruled out in isolated locations.

High temperatures are **trending above normal for this time of year** as temperatures will reach the upper 70s to low 80s in the afternoon. Portions of the western Peninsula will approach the middle 80s Tuesday afternoon. Low temperatures in the upper 50s to low 60s can be expected across North Florida, middle to upper 60s across Central Florida and upper 60s to low 70s throughout South Florida and the Keys. Cooler air will begin to move in overnight Wednesday along the far western Panhandle, but low temperatures will remain in the 50s.

#### Thursday – Saturday:

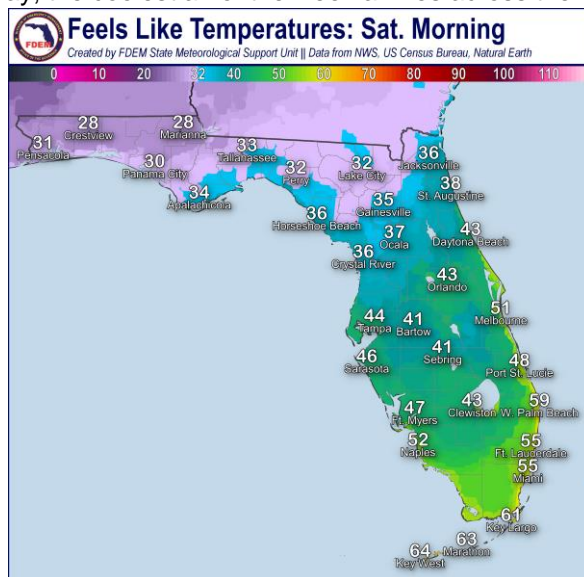


The mostly dry cold front will push through the rest of the state on Thursday leaving much drier and cooler conditions in its wake. Isolated showers and thunderstorms will linger through the daytime hours across the Peninsula, mostly towards the East-Central and Southeast coasts, before pushing offshore with the cold front (25-45% chance of rain). Once the front pushes off the Peninsula later in the day on Thursday, drier conditions will move in across the state with the help of high pressure moving eastward from the Central U.S. Mostly sunny and dry conditions return statewide Friday and Saturday with the help of high pressure along the Central and eventually East U.S. states (near 0-5% chance of rain). With drier conditions returning, **sensitive wildfire conditions** will also return throughout North Florida on Friday as relative humidity values will fall **near critical thresholds in the afternoon (30-35%)**. Northwesterly winds will remain light throughout the day near 5-10 mph and wind gusts upwards of 10-15 mph on Friday, but limited rainfall will keep grounds and soils drier

than normal. Similarly on Saturday, drier air will extend through the Peninsula keeping relative humidity values **near critical thresholds** in the afternoon (**30-40%**) also allowing for **sensitive wildfire conditions** to expand throughout the interior Peninsula. Northerly to northwesterly winds will also remain light near 5-10 mph and wind gusts will also remain near 10-15 mph on Saturday.

Cooler air moving in behind the cold front on Thursday will allow for high temperatures in the upper 60s to low 70s across North Florida. High temperatures throughout Central and South Florida will remain in the middle to upper 70s and low 80s on Thursday before the cooler air eventually pushes southward. Throughout North Florida on Friday, high temperatures will be in the middle to upper 60s. Cooler air will begin to make its way into Central Florida allowing for high temperatures to reach the low to middle 70s. South Florida will continue to see high temperatures in the middle to upper 70s. By Saturday, the coolest air of the week arrives across the state. High temperatures will remain in the middle to upper 50s across North Florida, low to middle 60s across Central Florida and upper 60s to low 70s across South Florida.

Low temperatures Thursday night will fall into the **upper 30s** to middle 40s across the Panhandle and upper 40s to low 50s across the rest of North Florida, middle to upper 50s across Central Florida and 60s throughout South Florida. As cooler air continues to filter southward, isolated portions of the northern Panhandle Friday night could see temperatures **near or at freezing (32-degrees)**. Throughout the rest of North Florida, low temperatures will remain in the **middle to upper 30s**. **Patchy frost** will likely develop overnight and early Saturday morning across the region. The interior Peninsula can anticipate low temperatures falling into the 40s through Lake Okeechobee, with coastal areas remaining in the upper 40s to low 50s. The rest of the state can anticipate low temperatures in middle to upper 50s and low 60s. Portions of the Panhandle can expect to see low



temperature **near or below freezing** Saturday night. Waking up Saturday morning, **feels-like temperatures** will be in the **upper 20s to low 30s** throughout the Panhandle and Big Bend, with portions of Northeast Florida and the Big Bend coastline seeing feels-like temperatures in the **middle 30s**. Low temperatures in the **30s** can be expected throughout the Panhandle and Big Bend and extending into portions of Nature Coast Saturday night. **Patchy frost** will likely develop overnight and early Sunday morning across the region. The rest of North Florida and Central Florida can anticipate low temperatures in the 40s, with the East-Central coast in the low 50s. Throughout South Florida low temperatures will range from the upper 40s across northern regions and 50s elsewhere. The Keys will remain in the low 60s. Waking up Sunday morning, temperatures throughout the Panhandle and Big Bend will **feel-like** they are in the **upper 20s to low 30s**, with the Big Bend coastline seeing feel-like temperatures in the **middle 30s**.

**Hydrology & Flooding:**

The Weather Prediction Center (WPC) is outlooking a **Marginal Risk (level 1 of 4) for Flash Flooding** along the Space and Treasure Coasts on Tuesday due to multiple rounds of shower activity moving onshore, some of which may be slow-moving, leading to instances of **localized flash flooding** for coastal urban and low-lying/poor drainage areas. Any training or slow-moving showers and possible thunderstorms may be capable of creating heavy rainfall rates at times that lead to ponding of water. While there is no organized risk for flash flooding on Wednesday, additional rounds of locally heavy rainfall over already Saturday grounds and soils could lead to **instances of localized flooding** along the East-Central and Southeast coasts. Widespread rainfall totals of 1-3" are possible through Thursday across the eastern Peninsula and South Florida, with **locally higher totals** upwards of 4-6" possible closer towards the coast. Throughout the rest of the state, flash flooding is not expected with rainfall. For the latest Flash Flood Outlooks, please visit the [Weather Prediction Center](#).

All Florida rivers, creeks and tributaries are below flood stage. Additional riverine flooding not expected over the next five days. For more information, visit the [River Forecast Center](#).

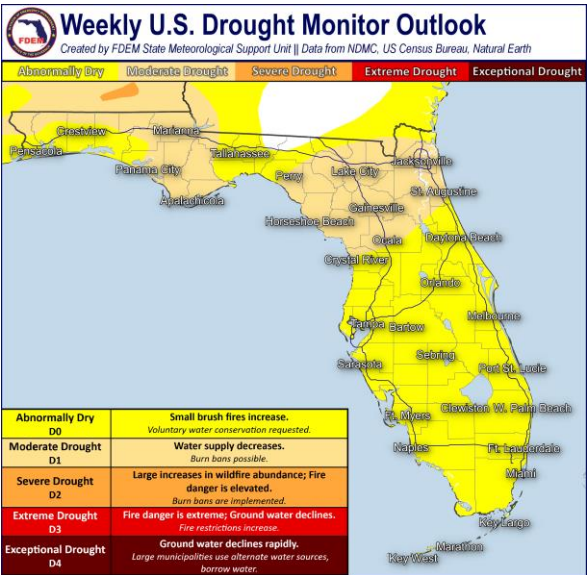
Lake Okeechobee's average elevation is 15.41 feet, which is within the operational band and 0.69 feet above normal.

**Drought and Fire Weather:**

Southerly to southeasterly winds and an approaching frontal boundary will give way to relative humidity values remaining above critical thresholds across the state. Breezy wind gusts of 10-15 mph will develop from Northeast Florida and throughout the Peninsula on Tuesday and Wednesday, with **stronger wind gusts upwards of 20-25 mph** along portions of the East Coast. As the next cold front moves through Wednesday and Thursday, drier and cooler conditions will move in behind the front. Drier conditions across North Florida will lead to relative humidity values falling **near or below critical thresholds** Friday afternoon (**30-35%**) **creating sensitive conditions**. Northwesterly winds will remain near 5-10 mph with wind gusts upwards of 10-15 mph will keep the overall wildfire threat limited; however, lack of rainfall and expanding drought conditions will create an increased wildfire threat. Similar on Saturday, drier conditions will expand further south throughout the interior Peninsula

allowing for relative humidity values to fall **near or below critical thresholds (30-40%)**. Red Flag Conditions are not expected due to calmer winds than criteria needed. According to the [Florida Forest Service](#), there are 10 active wildfires across the state burning approximately 32 acres (as of approximately 2:06 PM EST).

Conditions have continued to worsen on the latest [Drought Monitor](#) update (12/12) as drought conditions have expanded nearly statewide. The frontal system that moved through across the western Panhandle helped to keep conditions mostly stagnant for the region, but light rainfall or lack of rainfall across the rest of the state has led to **abnormally dry (emerging drought) conditions** to expand throughout the Peninsula. While temperatures throughout the period were below normal, the lack of significant rainfall has led to **moderate drought** returning to the southern half of the Apalachicola River and a new area of **moderate drought** being introduced across the Big Bend and Suwannee Valley.



Streamflow throughout the state is below normal for this time of year, and soil moisture is lower than average.

[The Keetch-Byram Drought Index](#) average for Florida is **384** on a scale from 0 (very wet) to 800 (very dry). There are now **2** Florida Counties with an average KBDI over 500 (drought/increased fire danger), including Broward and Miami-Dade.

### Rip Currents & Marine Hazards:

Persistent onshore winds and elevated surf along the Florida East Coast will continue to create a **high risk for rip currents** across all beaches through the midweek, at least. In the wake of the cold front passing, a **moderate risk** will be likely for East Coast beaches through the end of the week as breezy northerly to northwesterly winds return later this week and flow along the shoreline. Easterly to southeasterly winds along the Panhandle will continue to create a **moderate risk for rip currents** ahead of the cold front approaching. After the frontal boundary moves through later this week, northerly to northwesterly winds will return across the Panhandle and West Coast. Panhandle and West Coast beaches will likely see a **moderate risk for rip currents** Thursday and through the end of the week. For the latest Rip Current Outlook, visit [www.weather.gov/beach](http://www.weather.gov/beach).

**Wave heights of 4-6'** extend along the Florida East Coast and Atlantic-facing Key beaches with breaking **waves upwards of 7'** further offshore in the surf zone. Onshore winds and ocean swells will ease up compared to the last several days. **Wave heights of 2-4'** will return for the East Coast and Atlantic-facing Keys beaches Thursday morning. **Breaking waves** upwards of 5' will persist in the surf zone along Northeast and East-Central Florida beaches. In the wake of the passing cold front, northerly to northwesterly winds will allow for the ocean swell to build back along beaches briefly Saturday morning with **wave heights of 4-6'**. Panhandle and West Coast beaches can expect wave heights near 1-2' through Thursday. As northerly to northwesterly winds return in the wake of the passing cold front, **wave heights of 2-4'** will return along the Gulf and West Coast beaches briefly before declining overnight.

There is no risk for coastal flooding over the next five days.

**Red Tide** has been observed in **76** samples collected from Gulf and Atlantic coasts along Florida, with bloom concentrations observed in 25 samples. Satellite imagery continues to be used to track the patchy bloom. Forecasts predict a net southern to southwestern movement of surface waters and net southeastern transport of subsurface waters. Fish kills and respiratory irritation suspected to be related to red tide were reported over the past week along Southwest Florida (Pinellas, Sarasota, Lee and Collier counties).

Pinellas County – background to **medium concentrations**  
Hillsborough County – **very low to medium concentrations**  
Manatee County – background to **low concentrations**  
Sarasota County – **very low to medium concentrations**  
Lee County – **low to high concentrations**  
Collier County – background to **medium concentrations**  
Monroe County – **low concentrations**

On the latest **Blue-Green Algae** report there were 16 reported site visits from 12/6 to 12/12 and algal bloom conditions were observed by samples at six of the sites. Satellite imagery for Lake Okeechobee shows small patches of scattered low to **moderate bloom potential** along the shoreline of the lake. Scattered low to **moderate bloom potential** was observed via satellite imagery on Lake George and the mainstem of the St. Johns River to the Ortega River. As well, scattered low to **moderate bloom potential** was observed along the northern shore of the Caloosahatchee Estuary. There was no visible bloom potential observed along the St. Lucie Estuary.

[NWS Mobile Daily Hazards](#)

[NWS Tallahassee Daily Graphical Hazards](#)

[NWS Jacksonville Daily Hazards](#)

[NWS Melbourne Daily Graphical Hazards](#)

[NWS Tampa Daily Graphical Hazards](#)

[NWS Miami Daily Graphical Hazards](#)

[NWS Key West Daily Hazards](#)

**For the official National Weather Service forecast, please click on the following cities:**

[Pensacola](#) • [Panama City](#) • [Tallahassee](#) • [Gainesville](#) • [Jacksonville](#) • [Daytona Beach](#)

[Orlando](#) • [Tampa](#) • [Fort Myers](#) • [West Palm Beach](#) • [Miami](#) • [Key West](#)

[Click here for the latest watches, warnings, and advisories from The National Weather Service](#)

For coastal and offshore forecasts throughout Florida and Georgia, please click [here](#).

Have a wonderful rest of the week!

Kennedy Tartt, Assistant State Meteorologist

Florida Division of Emergency Management

[www.FloridaDisaster.org/Weather](http://www.FloridaDisaster.org/Weather)

