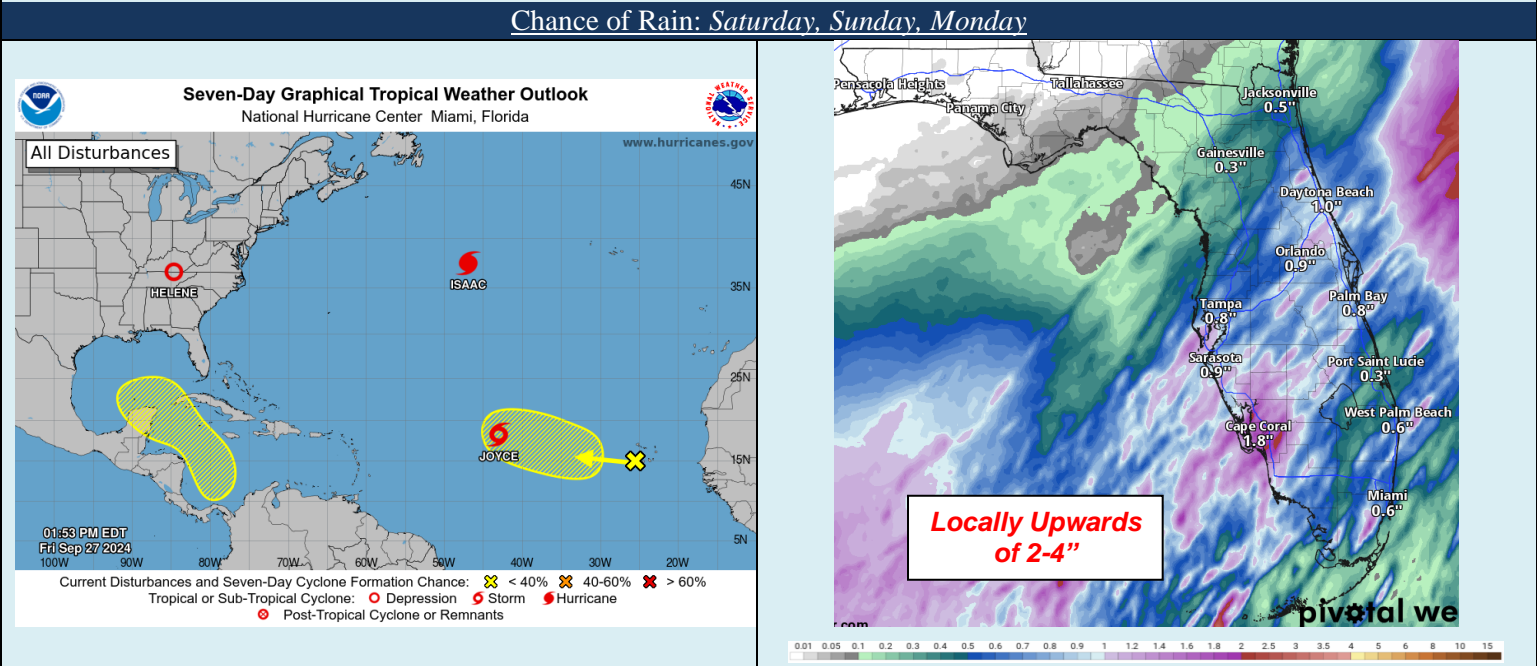
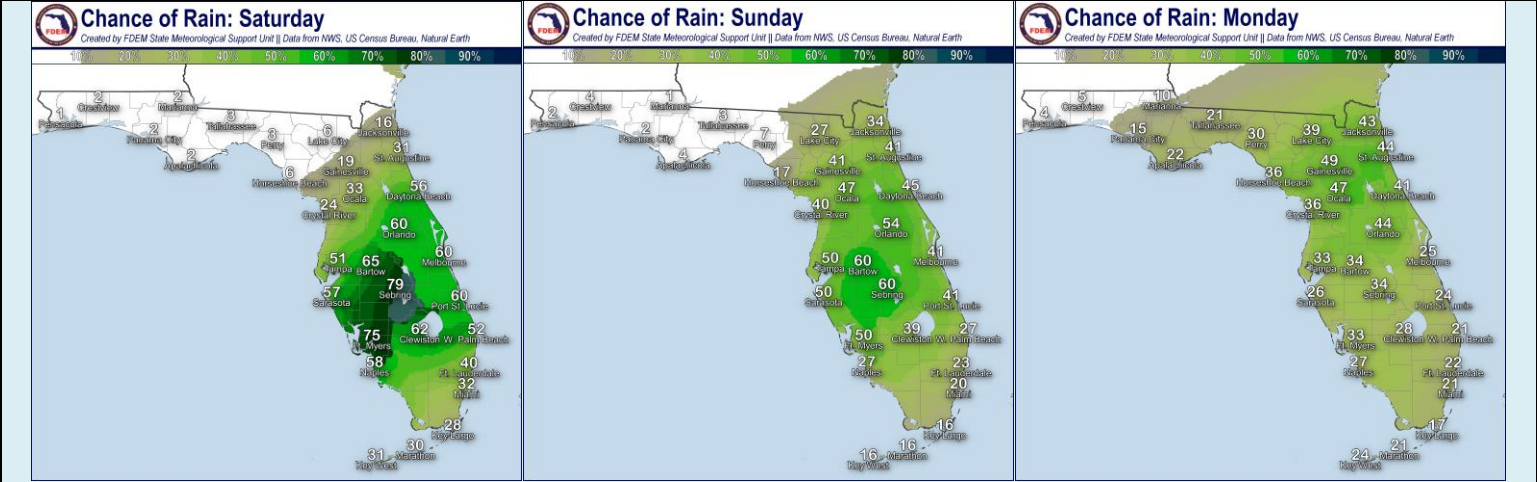


Friday, September 27, 2024					5-Day Statewide Weather Outlook			
No Threat			Low Threat		Moderate Threat		High Threat	
Day	Lightning	Tornado	Damaging Wind/Hail	Flash Flooding	Excessive Heat	Riverine Flooding	Coastal Flooding	Rip Currents
Fri	Locally S FL & Keys Peninsula	Iso. North FL (Early Morning)	Coastal Big Bend & N- Peninsula Iso. Statewide	W-Cntrl & SW FL Iso. Statewide	S FL & Keys Peninsula	E. Panhandle W. Big Bend W-Central FL	E-Forgotten & Nature Big Bend & Gulf Coast Gulf Coasts, NE FL & Keys	Statewide
Sat	Locally Central FL Peninsula		Locally Iso. Peninsula	Central FL Iso. Statewide	S FL & Keys Peninsula	E. Panhandle & Big Bend W-Central FL	Locally Gulf Coasts & Keys	Statewide
Sun	Locally Peninsula		Locally Iso. Peninsula	Locally Iso. N. Peninsula and the I-4 Corridor	S of I-4 & Keys Peninsula	E. Panhandle & Big Bend West-Central FL	Gulf Coasts, NE FL, & Keys	East Coast Panhandle West Coast
Mon	Locally Peninsula		Locally Iso. Peninsula	Iso. Peninsula	South Florida Peninsula	E. Panhandle & Big Bend W-Central FL	Iso. Gulf & West Coast	East Coast Panhandle West Coast
Tue	Locally Peninsula		Locally Iso. Peninsula	Iso. Peninsula	South Florida Peninsula	E. Panhandle & Big Bend W-Central FL	Iso. Gulf & West Coast	Locally Panhandle & East Coast West Coast



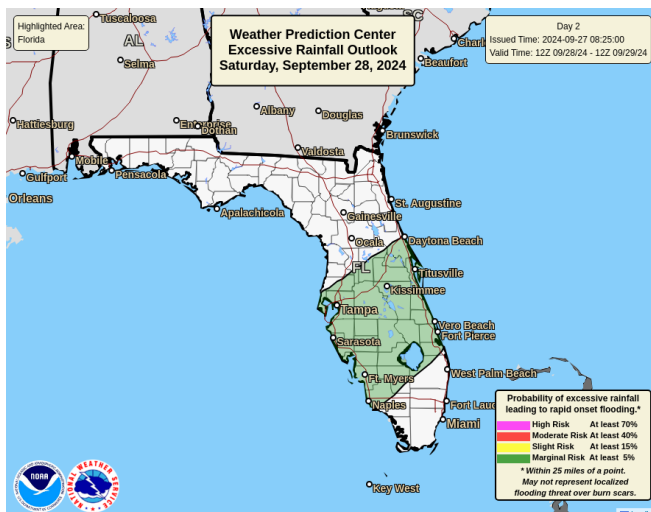
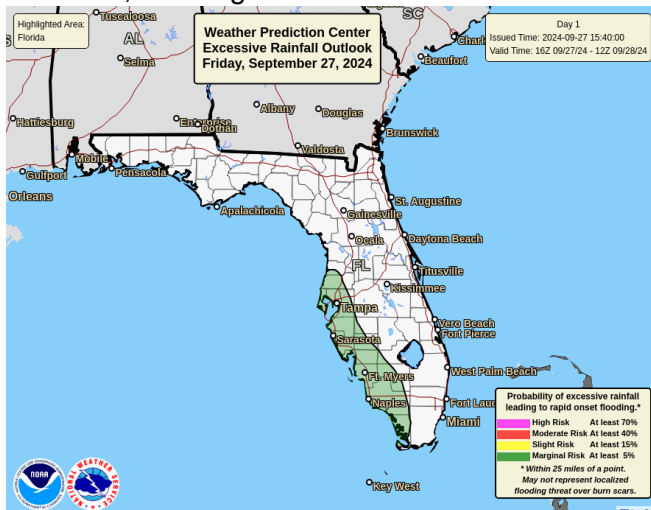
...Breezy Conditions Linger in Wake of Major Hurricane Helene...Frontal Boundary Moving Southeastward Towards I-4 Corridor Bringing Additional Rainfall Across Peninsula Through Saturday...Marginal Risk for Flash Flooding Across Portions of West Coast and Central Florida Through Saturday...Dry Conditions Return Across Panhandle and Big Bend; Isolated Showers Return Next Week...Triple Digit Heat Index Values to Continue Throughout the Peninsula; Heat Advisories Likely Each Day for Portions of South Florida...Minor to Moderate River Flooding Forecast Along Eastern Panhandle and Big Bend Over Next Few Days...Minor Coastal Flooding to Continue Along Portions of Big Bend and West Coast Over Next Day or So...Hazardous Beach Conditions to Continue Statewide...

Friday-Sunday:

Tropical Storm Helene will move well to the north-northwest of the state during the day today with a cold front extending from it down the Florida East Coast and across Central Florida. Mostly dry and sunny conditions can be expected across the state today with a few showers and thunderstorms possible along the frontal boundary through the Northern Peninsula southward to the I-4 corridor (15-45% chance of rain). The frontal boundary will drift northward into the Northern Peninsula this weekend, allowing isolated to scattered showers and thunderstorms to persist (20-45% chance of rain). High pressure over the western Atlantic will build westward over the Florida Peninsula through the period as deep tropical moisture remains in place across southern and central portions of the state today and Saturday, giving way to scattered to numerous showers and thunderstorms throughout the day (50-80% chance of rain). Drier air filtering in will allow rain chances to decrease across South and Central Florida Sunday (30-60% chance of rain). **Locally strong to severe thunderstorms** cannot be ruled out during peak heating hours. The Weather Prediction Center (WPC) is outlooking a **Marginal Risk (level 1 of 4) for Flash Flooding** along portions of West-Central and Southwest Florida today and Central Florida Saturday as abundant tropical moisture giving way to locally heavy downpours may lead to instances of **flooding** at times, especially along urban and low-lying/poor drainage areas and over saturated grounds. Generally warm and dry conditions are anticipated along the Florida Panhandle (near 0-10% chance of rain).

Breezy winds will persist across the state in the wake of Helene today with **gusts upwards of 20-30 mph** at times gradually dissipating throughout the day, returning to **gusts near 15-20 mph** at times this weekend. **Wind Advisories** have been issued along portions of Northeast Florida through Friday afternoon due to gusty winds lingering in the wake of Helene producing. Winds of 15-25 mph are possible with wind gusts

upwards of 40 mph.



High temperatures in the middle 80s to low 90s anticipated statewide over the next 3 days.

Heat indices in the **middle 90s to triple digits (100-110)** along the Peninsula and Keys are expected. **Heat Advisories** have been issued for Southeast Florida today may be needed for portions of South and Central Florida and the Keys this weekend. Low temperatures will return to the middle 60s to middle 70s along the Florida Panhandle and Suwannee Valley each night with middle 70s to middle 80s through the Peninsula and Keys.

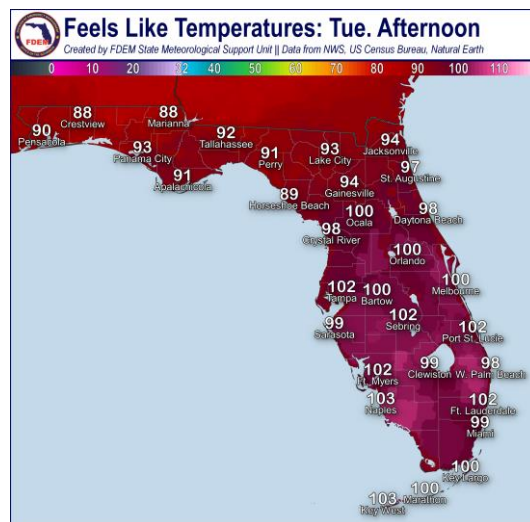
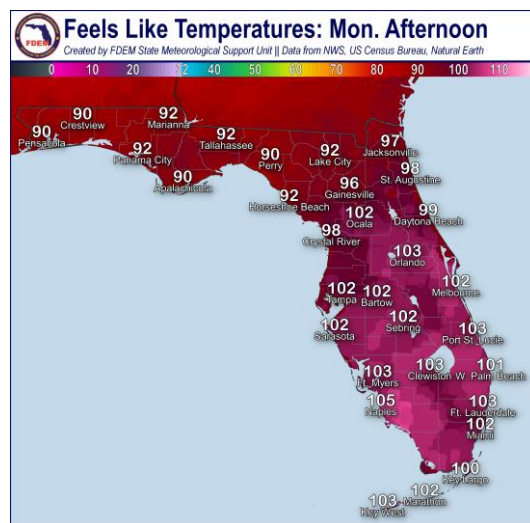
Monday – Tuesday:

The cold front will stall along the Big Bend and along the northern Peninsula early next week, creating daily isolated to scattered showers and thunderstorms throughout the Peninsula (20-40% chance of rain). While high pressure over the Central U.S. should help to continue to keep the Panhandle and portions of the Big Bend mostly dry, but isolated showers cannot be ruled out throughout the Big Bend during the afternoon and coverage of activity will be limited (10-30% chance of rain). Deeper pockets of moisture across portions of the Peninsula may allow for some locally heavy rainfall at times, which could bring **instances of localized flooding** for some low-lying and recently impacted areas. Slightly drier air across the Peninsula may also limit thunderstorm development and or coverage during the afternoon; however, **any thunderstorm could become locally strong to severe** during the peak heating hours of the day and bring locally heavy downpours, gusty winds and lightning. Mostly dry conditions can be expected to develop overnight as any shower and thunderstorm activity dissipates and moves offshore towards the coastal waters. A few lingering showers may continue throughout the overnight hours across the Peninsula coastal waters and near the immediate coastline (15-20% chance of rain).

High temperatures will reach the middle to upper 90s across North Florida and low 90s across Central and South Florida each afternoon. **Heat index values** in the **middle to upper 90s** can be anticipated throughout eastern portions of the Big Bend and Northeast Florida, while **triple digit heat index values (100-105-degrees)** can be expected throughout the Peninsula each afternoon. **Heat Advisories** may be needed across portions of South Florida Monday and Tuesday afternoon. Low temperatures will fall into the low to middle 70s across North and Central Florida and upper 70s to low 80s across South Florida and the Keys.

Tropical Weather:

Tropical Storm Helene: As of 11:00 AM EDT, Tropical Storm Helene was located about 30 miles southwest of Bryson City, North Carolina and about 105 miles north-northeast of Atlanta, Georgia and moving northward at 32 mph. A slowdown in forward speed is expected very soon, and the storm is forecast to stall over the Tennessee Valley tonight and through the weekend. Maximum sustained winds have decreased to near 45 mph with higher gusts. Continued weakening is expected, and Helene is



forecast to become extratropical later today. Water levels will continue to recede along the Florida Gulf Coast and portions of the Southeast U.S. coast throughout the day.

Hurricane Issac: As of 11:00 AM EDT, Hurricane Issac was located about 1080 miles west of the Azores and moving east-northeast at 18 mph. A gradual turn to the east-northeast with a slight acceleration in forward speed is expected over the few days. Maximum sustained winds near 75 mph with higher gusts. Additional strengthening is expected during the next day or so followed by gradual weakening by the end of this weekend. Issac poses no threat to Florida.

Tropical Storm Joyce: As of 11:00 AM EDT, Tropical Storm Joyce was located about 1325 miles east of the northern Leeward Islands and moving northwestward at 13 mph. This general motion is expected to continue through Sunday with a gradually slower forward speed. On Monday, a gradual turn to the north is forecast. Maximum sustained winds are near 40 mph with higher gusts. Gradual strengthening is expected through Saturday, followed by gradual weakening through early next week. *Joyce poses no threat to Florida.*

Western Caribbean: An area of low pressure could form over the western Caribbean Sea by the middle of the next week. Environmental conditions are expected to be conducive for slow development thereafter while the system moves generally northwestward, potentially entering the Gulf of Mexico by the end of next week. *This system poses no direct threat to Florida through the next -10 days at least but will continue to be monitored.*

*Formation chance through 48 hours...**low...near 0%.**

*Formation chance through 7 days...**low...30%.**

Eastern Tropical Atlantic: An area of low pressure could form over the eastern tropical Atlantic by the early to middle part of next week. Environmental conditions are expected to be conducive for slow development thereafter while the system moves generally northwestward at 10-15 mph. *This system poses no direct threat to Florida through the next 7-10 days at least but will continue to be monitored.*

*Formation chance through 48 hours...**low...near 0%.**

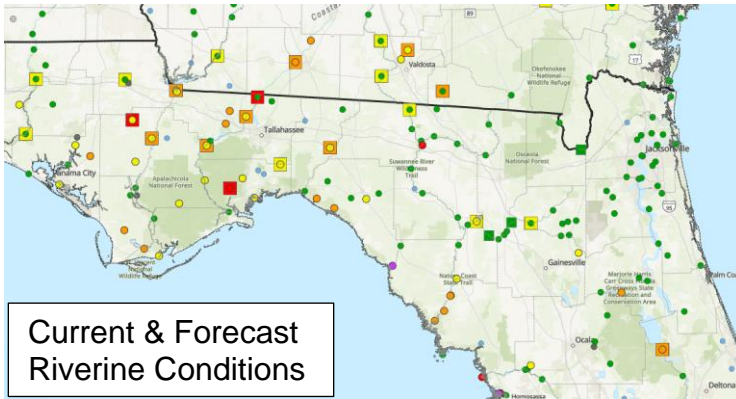
*Formation chance through 7 days...**low...30%.**

For the latest on the tropics, please visit the National Hurricane Center [website](#).

Hydrology & Flooding:

Abundant tropical moisture remaining in place across portions of South and Central Florida will continue to allow for scattered to numerous showers and thunderstorms in the afternoons and evenings. The Weather Prediction Center (WPC) is outlooking a **Marginal Risk (level 1 of 4) for Flash Flooding** along West-Central and Southwest Florida today and across Central Florida Saturday. Abundant tropical moisture giving way to locally heavy downpours may give way to instances of **flooding** along urban corridors and over saturated grounds. There is no organized risk for flash flooding through the rest of the period; however, isolated instances of **flooding** cannot be ruled out in the event of locally heavy rainfall over urban corridors and saturated grounds with daily shower and thunderstorm activity. Widespread rainfall totals of 1-2' are anticipated through the Peninsula with locally higher totals upwards of 2-4' possible. For the latest Excessive Rainfall Outlook, please visit the [Weather Prediction Center](#).



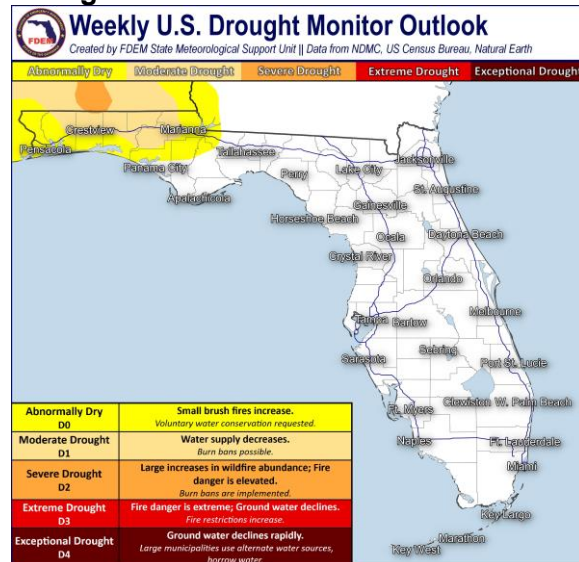


River Flood Warnings remain in effect along the [St. Johns River at Astor](#) as water levels very slowly decline but remain within **minor flood stage** due to trapped tides within the river basin. Additional forecast points along the St. Johns River are forecast to remain near or within Action Stage (bank-full) due to recent heavy rainfall over the area; however, river flooding is not anticipated at this time. Tidal portions of the lower St. Johns River could fluctuate in between Action and **moderate**

flood stage due tide fluctuations. **Numerous River Flood Warnings** have been issued along portions of the eastern Panhandle and Florida Big Bend in response to Hurricane Helene. **Moderate riverine flooding** is forecast for the [Chipola River near Altha](#), [Ochlockonee River near Concord](#) and [Sopchoppy River near Sopchoppy](#). **Minor riverine flooding** is forecast for the [Apalachicola River near Blountstown](#), [Ochlockonee River near Havana](#) and [near Bloxham](#), the [Aucilla River at Lamont](#) as well as the [Little Manatee River near Wimauma](#). Additional **minor to moderate river flooding** cannot be ruled out along additional portions of the eastern Panhandle and Big Bend due to heavy rainfall over southern Georgia flowing downstream into the Florida basins. Additional river flood warnings may be needed in the coming days. For more details, please visit the [River Forecast Center](#).

Lake Okeechobee's average elevation is 15.25', which is within the operational band and 0.48' above normal.

Drought & Fire Weather:



Little change in drought conditions is shown on this week's [Drought Monitor](#) update (9/26). **Moderate Drought** conditions remain in place along and north of the I-10 corridor through the Panhandle with **Abnormally Dry** (emerging drought) conditions extending southward to the coast and along the I-10 corridor into the Big Bend. On the other hand, limited rainfall along the Florida East Coast has allowed **Abnormally Dry** conditions to remain in place along the I-95 corridor through Brevard County. Near to above normal temperatures and above normal rainfall are expected over the next week.

[The Keetch-Byram Drought Index](#) average for Florida is **151 (-46)** on a scale from 0 (very wet) to 800 (very dry). There are **no** Florida Counties with an average KBDI over 500 (drought/increased fire danger).

The overall wildfire threat across the state today is minimal thanks to recently saturated grounds and abundant tropical moisture. Slightly drier air will make its way into portions of North Florida over the next few days, bringing relative humidity values down to the 45-65% range at times in the afternoon. Pockets of locally sensitive wildfire conditions cannot be ruled out along the Panhandle where moderate drought conditions persist. Scattered to numerous showers and thunderstorms are anticipated across South Florida today and Central Florida Saturday thanks to abundant moisture with isolated to scattered showers and thunderstorms developing across the Peninsula Sunday through Tuesday. According to the [Florida Forest Service fire dashboard](#), there are 4 active wildfires across the state burning approximately 3.75 acres (as of 7:04 AM EDT).



Rip Currents & Marine Hazards:

Breezy onshore winds and slowly declining ocean swells left in the wake of Hurricane Helene will continue to create a **high risk for rip currents** through the end of the week and into the weekend across the entire state, especially along the West Coast. Lighter winds and weaker ocean swells will develop on Sunday and into the early next week. A **moderate to high risk for rip currents** can still be expected for numerous Panhandle and West Coast beaches as onshore winds persist. East Coast beaches will likely see a **moderate risk for several beaches**, with some **locally high risks** along portions of Space and Treasure Coasts. For the latest Rip Current Outlook, visit www.weather.gov/beach.

Ocean swells and elevated wave heights will continue to linger through the end of the week and into the weekend in the wake of Hurricane Helene. A **High Surf Warning** remains in effect along the far western Panhandle through Friday afternoon due to dangerously **large breaking waves of 6-9'** within the surf zone. **High Surf Advisories** extend along the rest of the Panhandle, as well as the First Coast and West-Central Florida coast due to **wave heights of 4-7'** with large breaking waves **upwards of 9'** within the surf zone near the coast. All other beaches across the Sunshine State can expect **wave heights of 3-6'** to linger through Saturday and into the early morning hours on Sunday. Seas and wave heights will continue to gradually decline through the end of the weekend and into early next week. By early next week, wave heights of 1-3' will return across the state.

With the 11:00 AM EDT advisory, all Storm Surge Warnings along the Florida West Coast have been discontinued. Receding waters and lingering storm surge and onshore winds will continue to create the potential for **minor coastal flooding** along much of the eastern Panhandle and Florida Big Bend through Friday evening; **Coastal Flood Advisories** remain in effect. Portions of the Upper Keys could see **saltwater flooding** continue along the bayside waters as onshore winds continues to slowly decrease and water levels slowly recede, and the **Coastal Flood Warning** will continue through Saturday. **Minor coastal flooding** will remain possible along portions of Southwest Florida and the Florida Keys and **Coastal Flood Statements** remain in effect through tonight and into Saturday.

Red Tide has been observed at background to low concentrations in **11** samples collected from Southwest Florida over the past week (as of 9/20). Background to low concentrations were found in **5** samples from Sarasota County with background to very low concentrations in **3** samples from Pinellas County with background concentrations in **2** samples from Charlotte County and 1 sample from Manatee County.

Blue-Green Algae was observed, although partially obscured by cloud cover, on satellite imagery from 9/19 at scattered low to **moderate bloom potential** concentrated mostly along the northern and western shores of Lake Okeechobee. Satellite imagery of the St. Johns River obtained on 9/18 and partially obscured by cloud cover showed **moderate bloom potential** on Lake George and on the mainstem of the St. Johns River downstream of Lake George to Welaka, with scattered low bloom potential on the rest of the river. Satellite imagery obtained on 9/14 and 9/19, respectively, and partially obscured by cloud cover showed no bloom potential in visible portions of the Caloosahatchee and St. Lucie Estuaries.



[NWS Mobile Daily Hazards](#)

[NWS Jacksonville Daily Hazards](#)

[NWS Tampa Daily Graphical Hazards](#)

[NWS Tallahassee Daily Graphical Hazards](#)

[NWS Melbourne Daily Graphical Hazards](#)

[NWS Miami Daily Graphical Hazards](#)

[NWS Key West Daily Hazards](#)

For the official National Weather Service forecast, please click on the following cities:

[Pensacola](#) • [Panama City](#) • [Tallahassee](#) • [Gainesville](#) • [Jacksonville](#) • [Daytona Beach](#)

[Orlando](#) • [Tampa](#) • [Fort Myers](#) • [West Palm Beach](#) • [Miami](#) • [Key West](#)

[Click here for the latest watches, warnings, and advisories from The National Weather Service](#)

For coastal and offshore forecasts throughout Florida and Georgia, please click [here](#).

Have a wonderful weekend!

Melissa James, Assistant State Meteorologist

Kennedy Tartt, Assistant State Meteorologist

Florida Division of Emergency Management

www.FloridaDisaster.org/Weather

