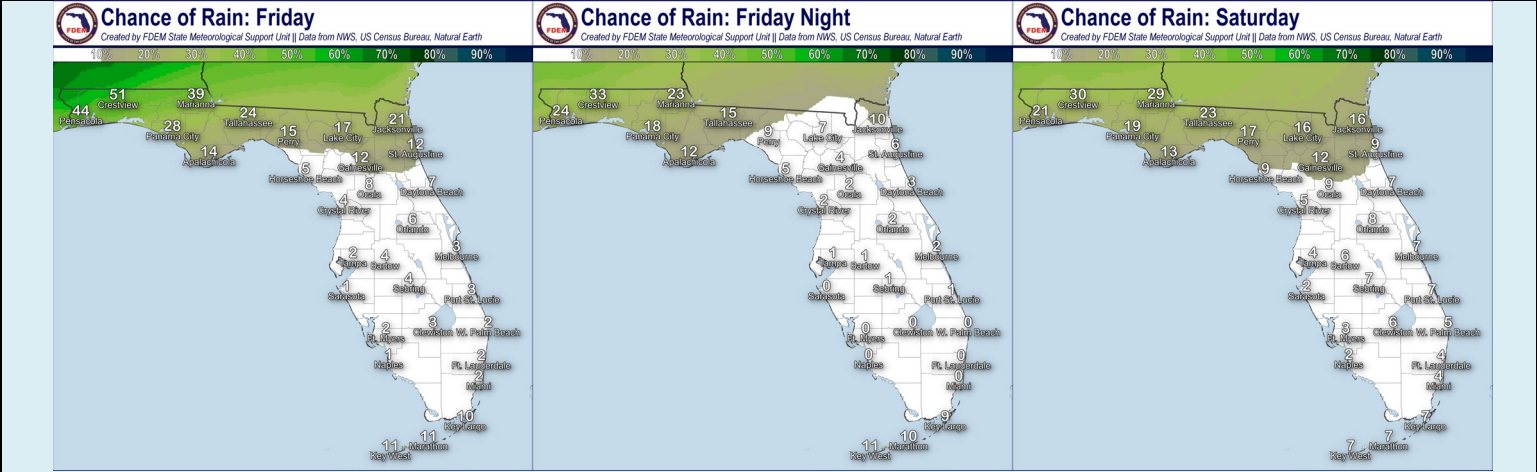
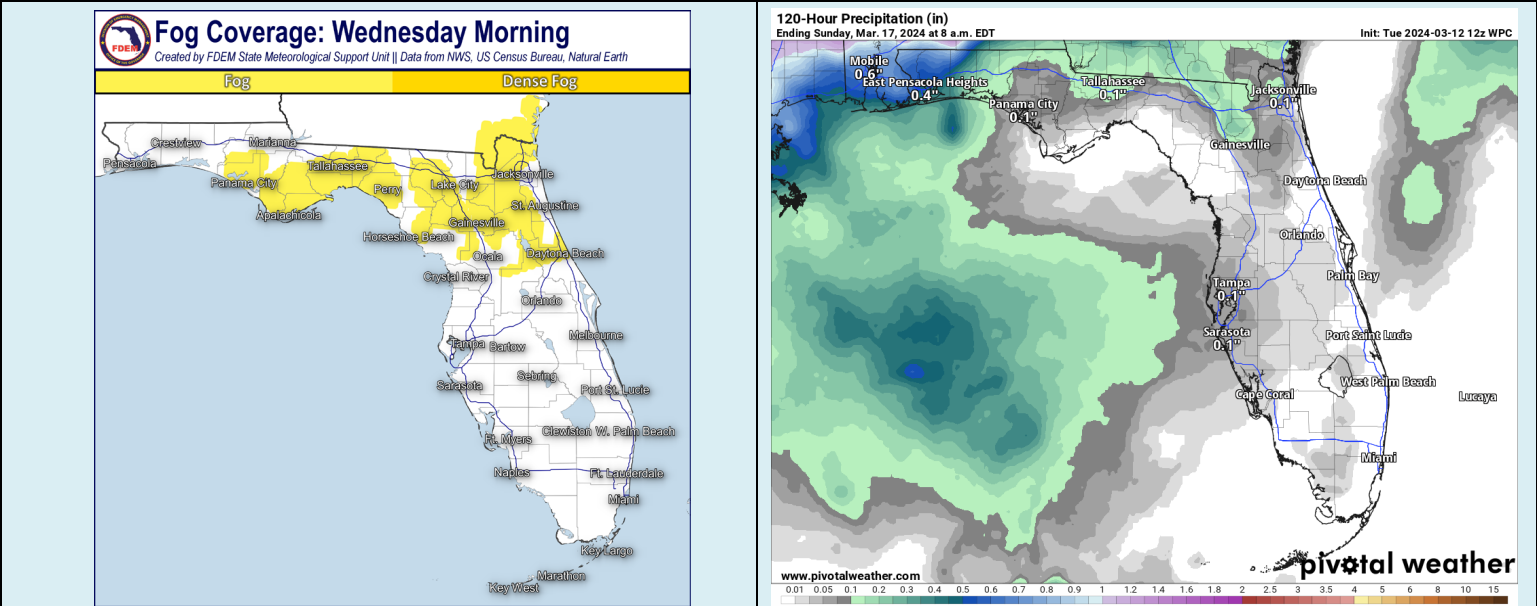


Tuesday, March 12, 2023					5-Day Statewide Weather Outlook			
No Threat			Low Threat		Moderate Threat	High Threat		
Day	Lightning	Tornado	Damaging Wind	Hail	Flash Flooding	Fog (Overnight)	River Flooding	Rip Currents
Tue						North Florida	Florida Panhandle	East Coast Panhandle West Coast
Wed						FL Panhandle & NE FL North Florida	Florida Panhandle	East Coast Panhandle West Coast
Thu	Western Panhandle					FL Panhandle & NE FL North Florida	Florida Panhandle	Panhandle & SE FL NE Florida West Coast
Fri	Locally North Florida (I-10)		Iso. North Florida		Western Panhandle		Florida Panhandle	Panhandle & East Coast West Coast
Sat	North Florida (I-10)		Iso. North Florida		Northwest Florida	Iso. Florida Panhandle	Florida Panhandle	Panhandle & East Coast West Coast



Forecast Rain Chances: *Friday, Friday Night, & Saturday*

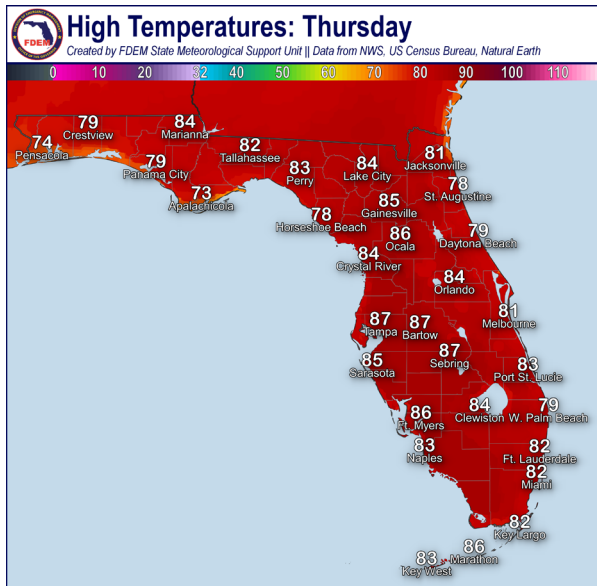


Forecast Fog Development: *Tonight*

Forecast Rainfall Totals Through *Saturday Night*



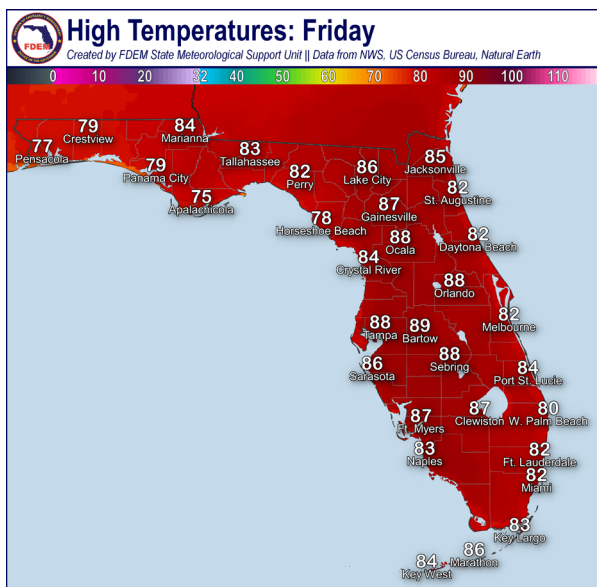
...Tranquil Weather Pattern Continues Through Midweek, Courtesy of High Pressure...Rain Chances Return to I-10 Corridor Thursday...Additional Flooding Concerns for North Florida Possible...Patchy to Locally Dense Fog Develops Over North Florida Most Nights...Temperatures Trend Above Normal...Breezy Conditions Develop Outside of Showers and Storms...Florida Peninsula Remains Dry and Warm Through Forecast Period...



North Florida:

A tranquil weather pattern will largely persist across North Florida through midweek, courtesy of an area of high pressure. Rain chances will remain near-zero today and Wednesday while winds gradually shift out of the south to southeast, allowing for low-level moisture to filter across North Florida. Sunny skies today with a few passing clouds will give way to increasingly cloud coverage Wednesday; however, temperatures will remain warm in the middle to upper 70s – some locations in the Suwannee River Valley may eclipse the 80-degree mark Wednesday afternoon. Temperatures will remain seasonably cool tonight in the middle 40s to middle 50s, turning more mild Wednesday night in the lower to middle 50s. **Areas of patchy fog** will be possible throughout North Florida tonight and Wednesday night; fog may be **locally dense** at times along the I-10 corridor.

As the area of high pressure shifts eastward into the adjacent Atlantic waters, moisture continues to increase ahead of the next frontal system. Southerly to southeasterly flow fosters the return of the afternoon Atlantic Coast sea breeze reaching west of the I-95 corridor each afternoon; however, the persistent dry air mass will not promote any rain, only an increase in afternoon clouds can be expected over Northeast Florida. Isolated showers and thunderstorms will be possible over the western Florida Panhandle (15-25% chance of rain), largely along and west of the US-231 corridor, but any organized severe thunderstorm or flash flood risk is not anticipated. Winds will continue to build Friday as gusts reach 10-20 mph throughout North Florida ahead of an approaching cold front. Atmospheric conditions suggest this cold front looks to slow down and/or even stall at the end of our forecast period; ingredients



may come together for heavier swath of rainfall over the Southeast U.S., but there remains uncertainty as to where the axis of heavy rain will set up. Rain chances reaching 25-40% can be expected to stretch along the I-10 corridor Friday, with the greater chance for shower and thunderstorm coverage further west (40-55% chance of rain). Given elevated river levels and already saturated soil, trends within the computer models will continue to be monitored for additional **flooding concerns**. While there is no organized risk for severe weather outlooked at this time, a few thunderstorms during the peak heating hours of the day could be **strong to severe** and capable of producing frequent lightning, gusty winds, and heavy rainfall rates. Isolated to scattered rain and thunderstorm chances persist Saturday (15-30% chance of rain), with the higher rain chances favoring the northern Florida Panhandle.

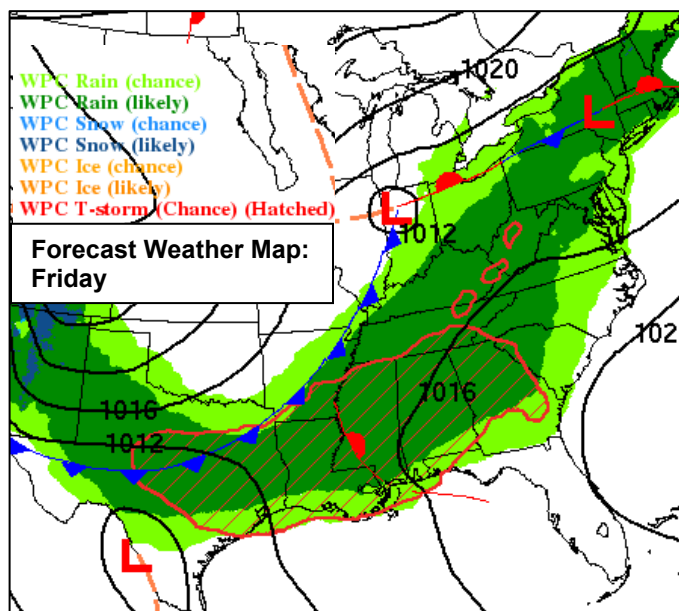
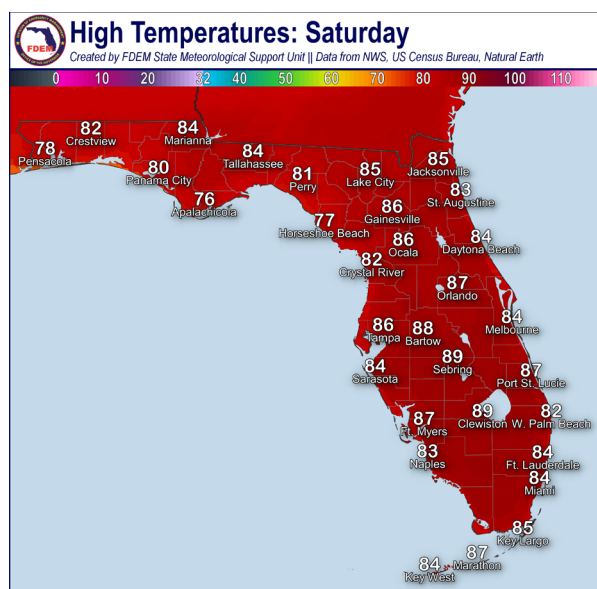


Afternoon temperatures will continue to trend **well above normal** for this time of year, with afternoon high temperatures reaching the lower to middle 80s each afternoon. Low temperatures will run warm in the 60s. Another round of **patchy to locally dense fog** will be possible Thursday night into Friday morning before breezy conditions develop during the Friday daytime hours.

Florida Peninsula:

High pressure will continue to dominate the weather pattern through the Florida Peninsula as it slowly shifts eastward. Winds will shift out of the east-southeast to southeast, but the persistent warm and dry airmass will continue to limit rain chances. Only an isolated shower is possible this evening over the southern Florida Peninsula (10-15% chance of rain). As the area of high pressure migrates over the adjacent western Atlantic, its influences will still overspread the Peninsula through the forecast period, resulting in the more consistent rain chances confined to the I-10 corridor. The afternoon East Coast sea breeze will make its daily appearance moving westward over I-95, with assistance from the existing south to southeast flow. While a dry passage of the sea breeze can be expected, the subtle return of moisture will lead to considerable cloudiness during the afternoon hours (less than 10% chance of rain). Winds will gradually begin to increase Thursday along the Southeast Florida Coast, with sustained winds of 10-15 mph expected and gusts 15-20 mph. By Friday, consistent winds of 10-15 mph will be accompanied by wind gusts of 15-25 mph – especially along the immediate coastline.

Afternoon temperatures will continue a warming trend over the next 5 days, with highs reaching the lower to middle 80s today and Wednesday, and the middle to upper 80s by Thursday. A few interior Peninsula locations may eclipse the **90-degree mark** this weekend! Increasing humidity may allow for temperatures to **feel like the middle 90s** during the peak heating hours of the day. Low temperatures will run warm over the next 5 days, with most locations in the upper 60s to 70s. Saturday night will feature the warmest overnight temperatures of the forecast period, with Southeast Florida and the Florida Keys remaining in the middle to upper 70s.



Hydrology & Flooding:

There is no organized risk for flash flooding across Florida through Thursday. By the end of the forecast period, our next weather system works its way into the Southeast U.S. Environmental conditions suggest the accompanying cold front may slow down and/or even stall for a period of time, supporting repeat and training thunderstorms along the Gulf Coast. Current models indicate the greater rainfall targets the interior Lower Mississippi Valley into the Deep South; however, there remains uncertainty regarding where the heaviest swath of rainfall occurs. The Weather Prediction Center (WPC) is outlooking a **Marginal Risk of Flash Flooding (level 1 of 4)** over the western Florida



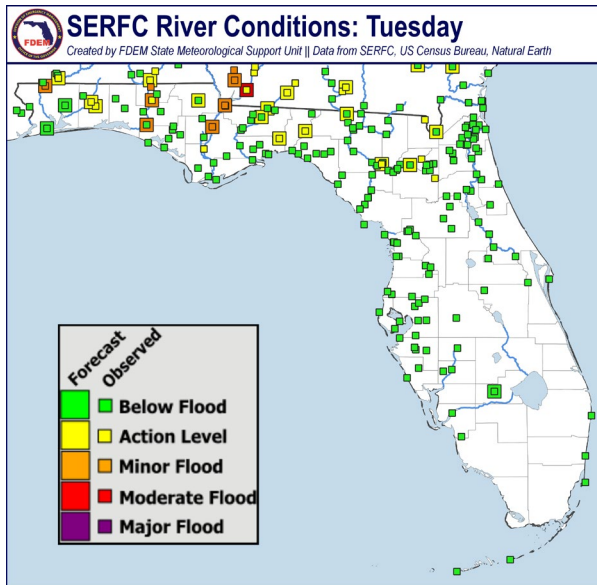
Panhandle Friday and the far Northwest Florida Saturday; additional refinements to the outlook areas can be expected as guidance reaches a consensus. Rainfall totals of 0.5-1" can be expected over the western Florida Panhandle, with more isolated rainfall totals further east along the I-10 corridor. Locally higher amounts exceeding 2-3" cannot be ruled over North Florida, especially for locations that experience multiple rounds of heavy rain and thunderstorm activity. For the latest Flash Flood Outlooks, please visit the [Weather Prediction Center](#).

There is no risk for coastal flooding over the next 5 days.

River flooding will continue to be a concern for several days along several Florida Panhandle river, creeks/streams, and waterways as water from recent heavy rainfall flow from north to south through the basins. **River Flood Warnings** are in effect for the [Choctawhatchee River near Caryville \(US-90\)](#) until Thursday evening and [near Bruce \(SR-20\)](#) until further notice as **minor flooding** is

forecast. A **River Flood Warning** will remain in effect for the [Escambia River near Century](#) until further notice as **minor flooding** is ongoing and forecast to continue. **Minor flooding** is occurring and forecast to continue for the [Apalachicola River at Woodruff L & D](#) until Friday morning and [near Blountstown](#) until further notice. Rain chances increase over these basins and areas north that experienced the recent heavy rain event, and computer models are hinting that a heavier swath of rain is possible across a portion of the Southeast U.S.; however, it is too soon to pinpoint where the heaviest rain will fall in relation to our already elevated river basins. Trends in the computer models will continue to be monitored in the coming days. For more details, please visit the [River Forecast Center](#).

Lake Okeechobee's average elevation is 15.85 feet, which is within the operational band and 1.37 feet above normal.



Drought & Fire Weather:

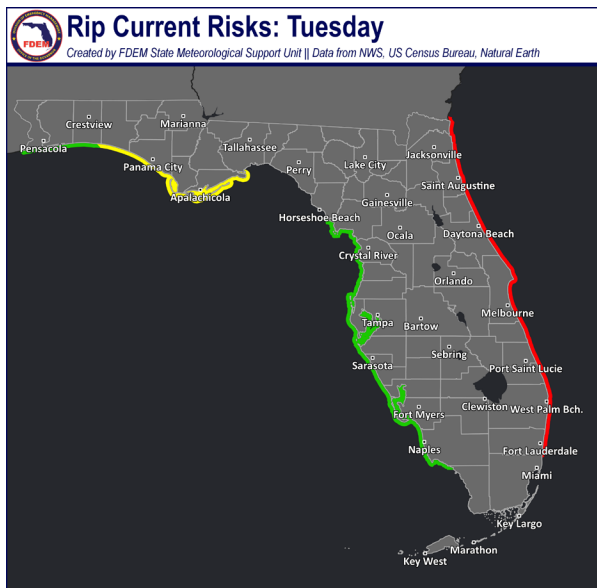
Long-term rainfall deficits continue to promote Abnormally Dry (*emerging drought*) conditions along West-Central Florida and the western Florida Panhandle. Increased shower and thunderstorm activity this past weekend has allowed for above normal rainfall to return to North Florida during the past 7 days (2-4" above normal); these rainfall totals should work to limit the expansion of emerging drought and/or reduce its coverage on this week's [Drought Monitor](#) update.

The [Keetch-Byram Drought Index](#) average for Florida is **80** on a scale from 0 (very wet) to 800 (very dry). There are **zero** Florida counties with an average KBDI over 500 (drought/increased fire danger).

In the wake of the weekend's frontal system, a much drier air mass has been reinforced by an area of high pressure over the Southeastern U.S. Relative humidity values approaching **critical thresholds** can be expected across North and Central Florida this afternoon, with values reaching **25-35%** along the Florida Panhandle and Suwannee River Valley and **35-45%** throughout Central Florida. The overall wildfire threat will be limited by the recent wetting rains over North Florida and the lighter wind regime. Only **locally sensitive wildfire conditions** can be expected through today, particularly for locations coinciding with areas of long-term emerging drought. Low-level moisture will gradually return to the forecast, courtesy of southerly to southeasterly flow, allowing relative humidity to begin its rebound. Relative humidity values will dip into the 40-45% range over North and interior Central Florida through Thursday. Breezy conditions develop Friday and Saturday ahead of an approaching frontal system, with wind gusts of 15-25 mph possible statewide; however, relative humidity values will remain well above critical thresholds for the remainder of the forecast period. According to the [Florida Forest](#)



[Service](#), there are 13 active wildfires across the state burning approximately 120 acres (as of 12:30 PM EDT).



Rip Currents & Marine Hazards:

Onshore flow returning to the Sunshine State will yield an elevated rip current risk for several beaches over the next 5 days. A **high risk of rip currents** can be expected along the Florida East Coast through Wednesday, with portions of Northeast Florida seeing a brief reprieve to **moderate risk** conditions Thursday. Stronger southerly to southeasterly flow at the end of the forecast period will **increase the rip current risk** along Atlantic Coast beaches Friday and Saturday. A **moderate risk of rip currents** can be expected along much of the Florida Panhandle through Wednesday, with locally brief periods of **high risk** conditions possible along southeast-facing Panhandle beaches. A **high risk of rip currents** returns along Florida Panhandle beaches Friday and Saturday. A low risk of rip currents can be expected along West Florida beaches over the next 5

days. For the latest Rip Current Outlook, visit www.weather.gov/beach.

Lingering elevated **wave heights** can be expected along the Florida Atlantic Coast today, with swells reaching 3-5' in the surf zone. A lighter wind regime will allow for wave heights to gradually subside Wednesday and Thursday along statewide beaches, with breakers remaining less than 2'. Building southerly flow Thursday night and Friday will yield slight enhancements in **wave heights** along Gulf and Atlantic beaches, with waves reaching 2-4'. Surf zone heights of 1-3' can be expected on Saturday. Locally higher breakers may accompany the daily sea breeze development during the peak heating hours of the day, especially along the Treasure Coast.

[Red Tide](#) has not been observed in samples collected statewide over the past week.

[Blue-Green Algae](#) has been observed via satellite imagery and site visits over the past week.

Low to **moderate bloom potential** was shown on 15% of Lake Okeechobee, predominately along the western and southern shorelines of the lake. Satellite imagery showed light scattered low to **moderate bloom potential** throughout Lake George and the mainstem of the St. Johns River down to the City of Jacksonville. Significant bloom potential was not observed through the Caloosahatchee and St. Lucie Estuaries.

[NWS Mobile Daily Hazards](#)

[NWS Jacksonville Daily Hazards](#)

[NWS Tampa Daily Graphical Hazards](#)

[NWS Tallahassee Daily Graphical Hazards](#)

[NWS Melbourne Daily Graphical Hazards](#)

[NWS Miami Daily Graphical Hazards](#)

[NWS Key West Daily Hazards](#)

For the official National Weather Service forecast, please click on the following cities:

[Pensacola](#) • [Panama City](#) • [Tallahassee](#) • [Gainesville](#) • [Jacksonville](#) • [Daytona Beach](#)

[Orlando](#) • [Tampa](#) • [Fort Myers](#) • [West Palm Beach](#) • [Miami](#) • [Key West](#)

[Click here for the latest watches, warnings, and advisories from The National Weather Service](#)

For coastal and offshore forecasts throughout Florida and Georgia, please click [here](#).

Have a wonderful rest of the week!

Caitlyn Gillespie, Deputy State Meteorologist

Florida Division of Emergency Management

www.FloridaDisaster.org/Weather

