



Florida Division of Emergency Management State Watch Office

Morning Situation Report

Wednesday, June 7, 2023



State Emergency Operations Center Activation Level

Level 2 Activation



SERT On-Call Personnel

Position	Personnel	Phone	Email
Operations Chief	Ian Guidicelli	(850) 354-3044	Ian.Guidicelli@em.myflorida.com
Watch Officer	Amy Godsey	(850) 519-8483	Amy.Godsey@em.myflorida.com
Duty Officer	Jeremy Whitt	(850) 755-8521	Jeremy.Whitt@em.myflorida.com
Operations Officer- Day	Kelsey Walters	(850) 815-4001	SWP@em.myflorida.com
Operations Officer- Swing	Caleb Pitts	(850) 815-4001	SWP@em.myflorida.com
Operations Officer- Night	Cassi Farestvedt	(850) 815-4001	SWP@em.myflorida.com
Meteorologist	Kennedy Tartt	(850) 567-6368	Kennedy.Tartt@em.myflorida.com
Plans Chief	Kaylynn Perry	(850) 254-5657	Plans_Command@em.myflorida.com
Logistics Chief	Kenneth DeCastro	(850) 567-1943	Kenneth.DeCastro@em.myflorida.com
Human Services Director	Pam Hughes	(850) 528-5638	Pamela.Hughes@em.myflorida.com
Emergency Services	Rob Dietrich	(850) 727-3414	Robert.Dietrich@em.myflorida.com
Infrastructure Branch Director	Christina Goetzman	(850) 519-8581	Christina.Goetzman@em.myflorida.com
ESF 8 On-Call	Brandon Gore	(866) 786-4673	DLDOHDutyOfficers@flhealth.gov
Public Information Officer	Alecia Collins	(850) 591-9544	Alecia.Collins@em.myflorida.com
DEM Finance and Admin	Jessica Blake	(850) 284-8070	Jessica.Blake@em.myflorida.com



Regional Coordination Team

Team	County Location	Status / Activities
Region 1: Jim Roberts	Gadsden	R1 Meeting Prep
RC Manager	Leon	Hurricane Season Coord Mtg / R8 RC Interviews
Region 2: Willie Bouie		
Region 3: Pam Bergstrom	Volusia	FDACS SART Workshop
Region 4: Paul Siddall	Pinellas	Hurricane Exercise
Region 5: Austin Beeghly	Orange	FDLE Meeting / R8 RC Interviews
Region 6: Glen Hammers	Lee	RDSTF Meeting
Region 7: Claudia Baker	Miami-Dade	R7 Meeting Prep



RC Status
Normal Operations
In Region / Delayed Response
Out of Region / Delayed Response
Out of Service / Unavailable



Recovery Regional Coordination Team

Team	County Location	Status / Activities
Region 1: Vacant	N/A	Not Available
Region 2: Justin Lazzara	Leon	Off & Monitoring
Region 3: Joshua Saunders	Volusia	FDACS SART Training
RRCT Manager	Pinellas	Annual Exercise
Region 4: Jeremy O'Dell		
Region 5: Elizabeth Caison	Orange	Houses of Worship Expo
Region 6: Kathryn Thompson	Lee	RDSTF Meeting
Region 7: Dana McGeehan	Broward	FROC Meeting

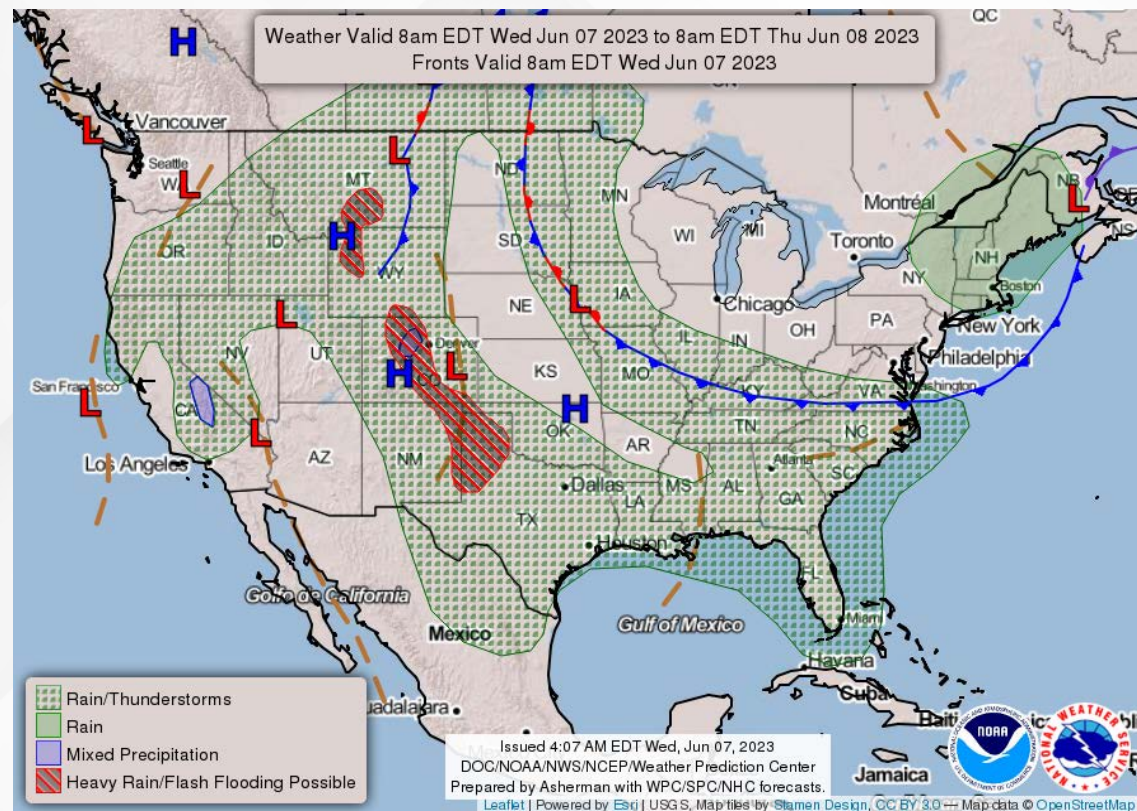
Region 1 Coverage provided by RRC 5

Region 2 Coverage provided by RRC 3

RRC Status
Normal Operations
In Region / Delayed Response
Deployed / Delayed Response
Out of Service / Unavailable

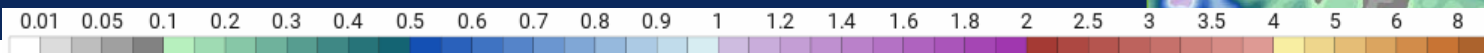


Meteorology Summary

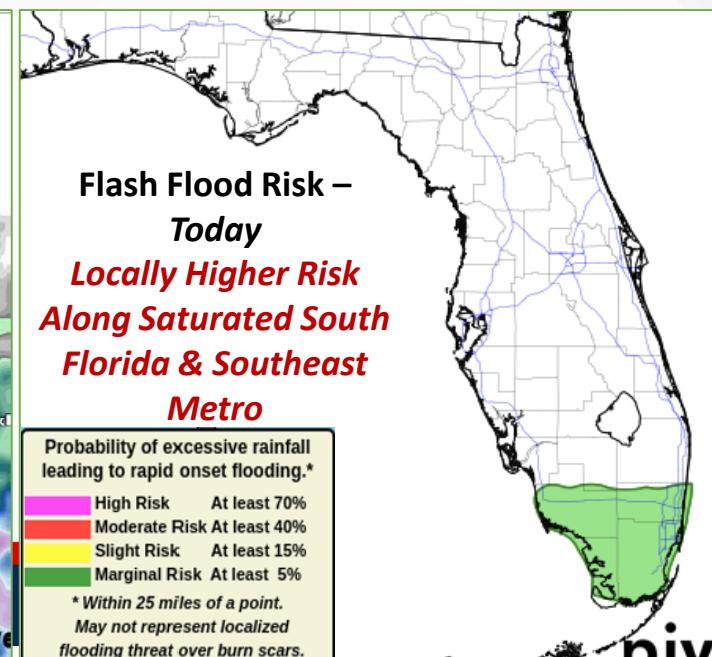
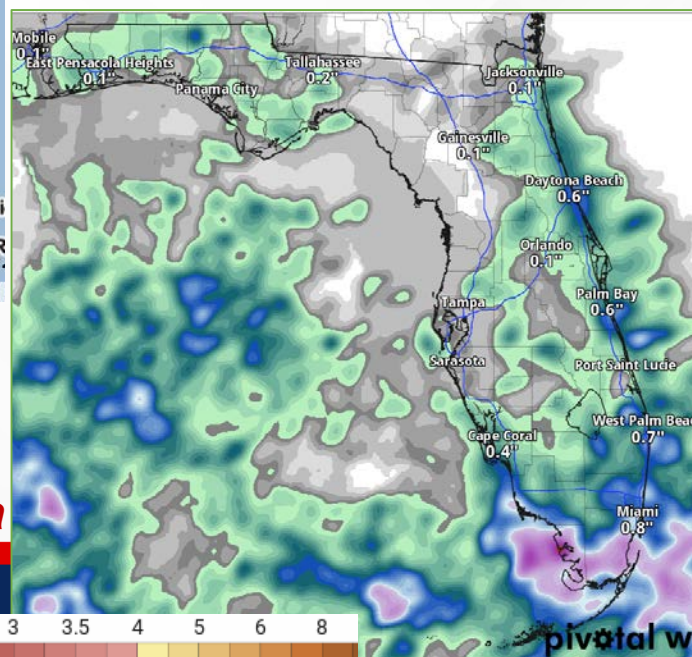


Today's Weather Map

24-Hour Rainfall Totals
Locally 3-4" South Florida



Threat	R1	R2	R3	R4	R5	R6	R7
Lightning	L	L	M	L	M	M	M
Tornado							
Damaging Wind			L		L	L	L
Hail			L		L	L	L
Flash Flooding			L		L	L	M
Fog (Overnight)	L	L	L				
Excessive Heat				L	L	L	L
Wildfire							
Rip Currents	M	M	M	L	M	L	H
Lake Okeechobee Elevation:	14.00 ft. (0.87 ft. Above Normal)						
Keetch-Byram Drought Index:	215 (+13) on a scale from 0 (very moist) to 800 (very dry)						





Meteorology Summary

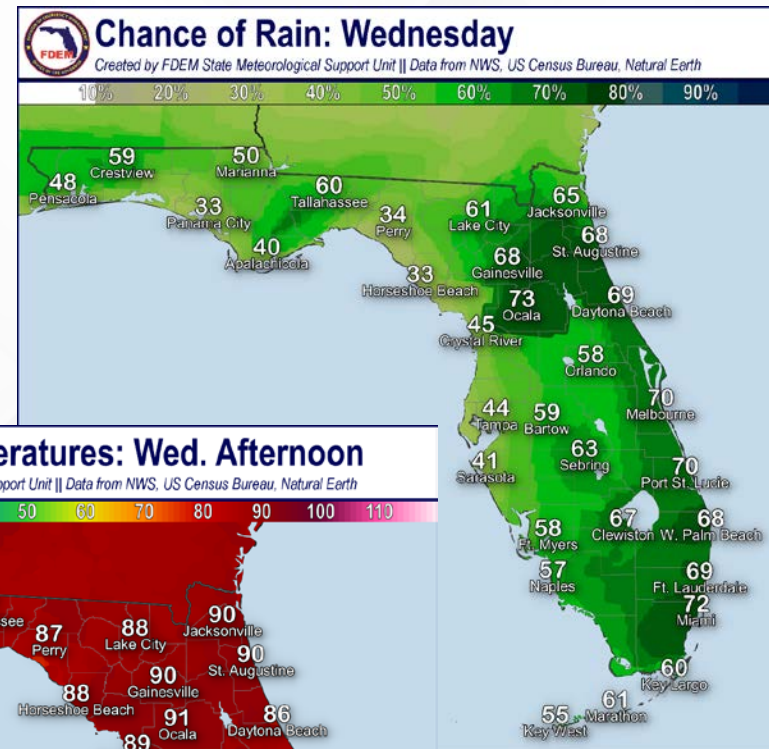
Statewide Overview, Next 24 Hours:

An active weather pattern will set up later this morning and continue through the afternoon and into the evening across East Florida.

Winds will shift out of the south to southwest across the state allowing for moisture to flow inland from the Gulf of Mexico. The sea breeze collision will set along east of the I-75 corridor and across East Florida and into South Florida (60-75% chance of rain). Additionally, a slow-moving frontal boundary will sink southward into the Mid-Atlantic states, which will add as an extra source of lift for showers and thunderstorms to develop. The Storm Prediction Center (SPC) is outlooking a **Marginal Risk (level 1 of 5) for Severe Weather** across East Florida, along the I-95 corridor and eastward towards the coastline. Environmental conditions, as well as multiple sources of lift, will help for **strong to severe thunderstorms** to develop during the peak heating hours of the day. These thunderstorms will be capable of producing frequent lightning, locally gusty winds (45-60 mph), small hail (dime to quarter size), and heavy downpours. With abundant moisture increasing, heavy and intense downpours can be expected within stronger shower and thunderstorm activity leading to **instances of ponding and localized flooding**.

High temperatures will warm up into the upper 80s to **low 90s**. With moisture flowing inland from the Gulf of Mexico across Central and South Florida, warm and muggy conditions can be expected. **Temperatures will feel-like** they are in the **low 90s** and **approaching the middle 90s** by the afternoon across portions of West-Central and Southwest Florida.

Shower and thunderstorm activity will shift eastward off the eastern Peninsula through the evening hours, as well as dissipate due to the lack of daytime heating processes (25-45% chance of rain). Lingering showers and thunderstorms may continue along the immediate coastline and over the Gulf Stream waters. Low temperatures will fall into the upper 60s to middle 70s. **Isolated areas of patchy fog and low clouds** may develop overnight and early Thursday morning along the I-10 corridor.





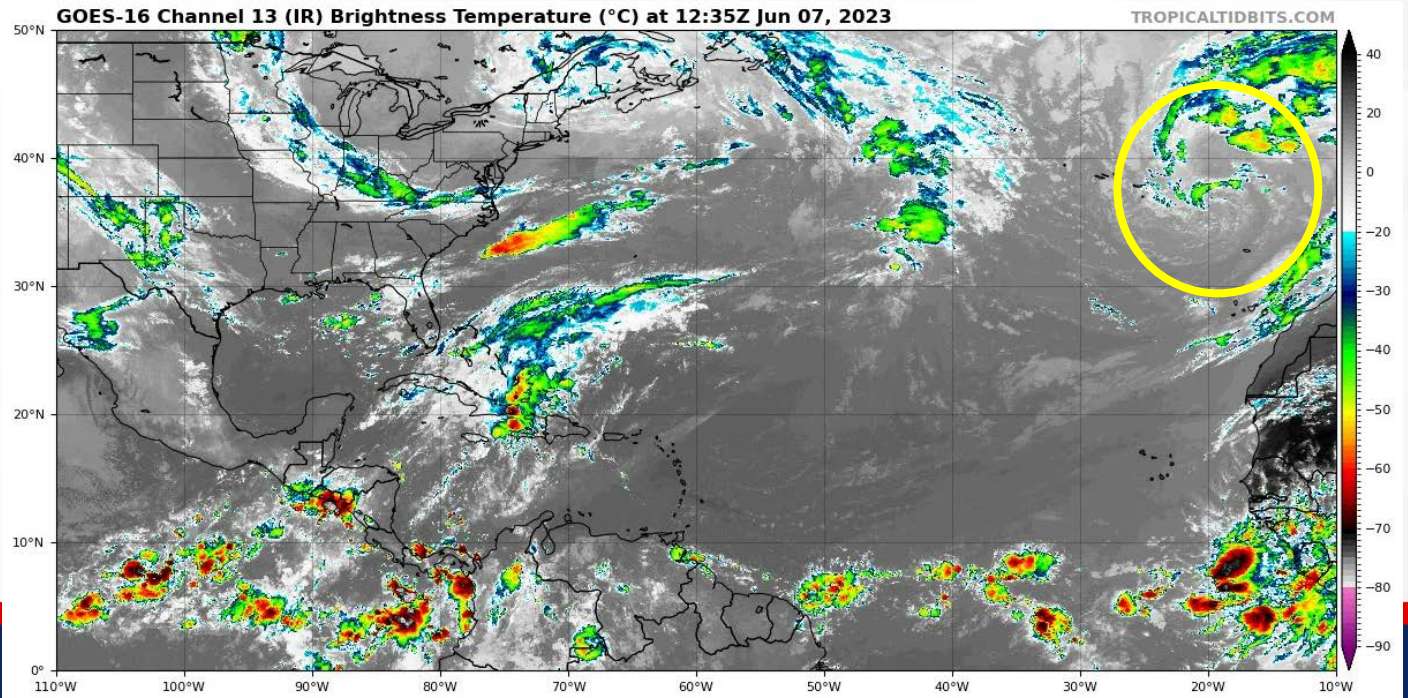
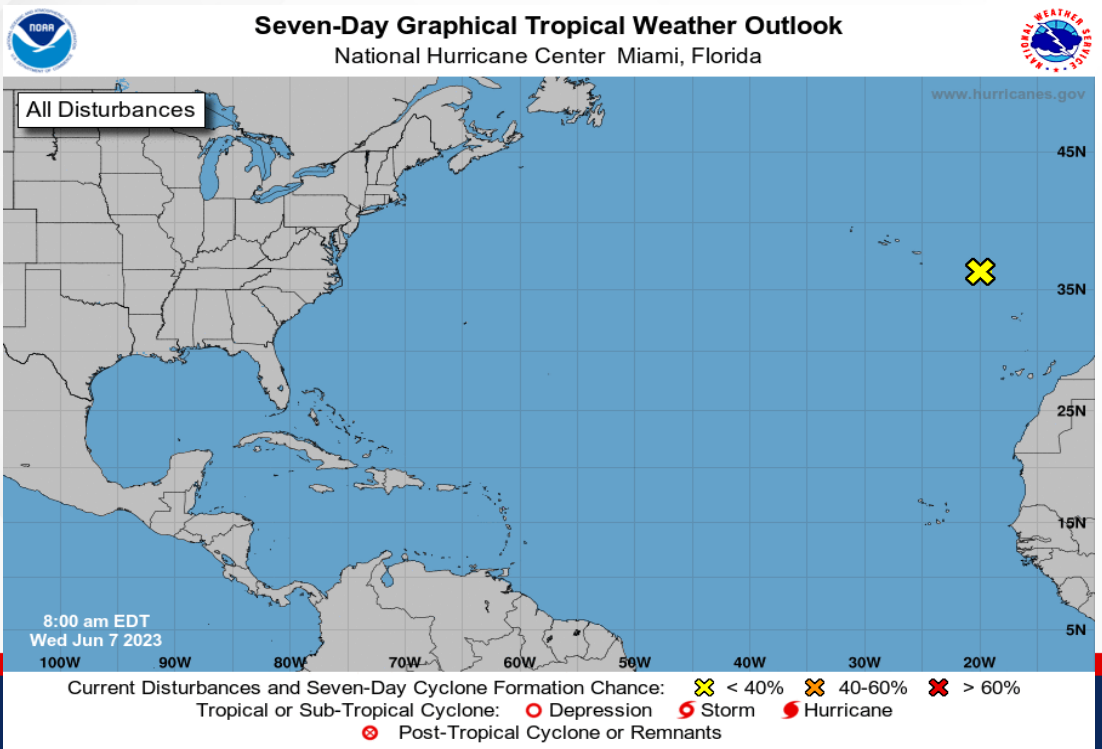
Tropical Weather

For the latest on the tropics, please visit the National Hurricane Center (NHC) at www.hurricanes.gov.

Northeastern Atlantic Ocean: A non-tropical area of low pressure located midway between the eastern Azores and Madeira Islands is producing limited showers and thunderstorms, as well as winds near gale force over the northeastern Atlantic Ocean. The system is forecast to turn northeastward later today and move over cooler waters, and further development is not anticipated. Periods of heavy rainfall and gusty winds will continue, however, across portions of the Canary Islands and Madeira Island over the next day or so. *This system poses no threat to Florida.*

*Formation chance through 48 hours...**low...near 0%**

*Formation chance through 7 days...**low...near 0%**





Coastal Hazards & Hydrology

Rip Currents: Stronger offshore flow along Southeast Florida will create a **high risk for rip currents**. A **moderate risk for rip currents** will continue for Northeast and East-Central Florida beaches as winds shift out of the south to southwest. A **moderate risk** continues for Panhandle beaches. West Coast beaches will continue to see a low risk for rip currents. For the latest Rip Current Outlook, visit www.weather.gov/beach.

Marine Hazards: Winds shifting out of the south to southwest will continue to allow wave heights to decline along the Florida East Coast. Wave heights along Northeast and East Central Florida beaches will return to 2-3' by the afternoon, and 1-2' along Southeast beaches. Panhandle and West Coast beaches will continue to see wave heights of 1'.

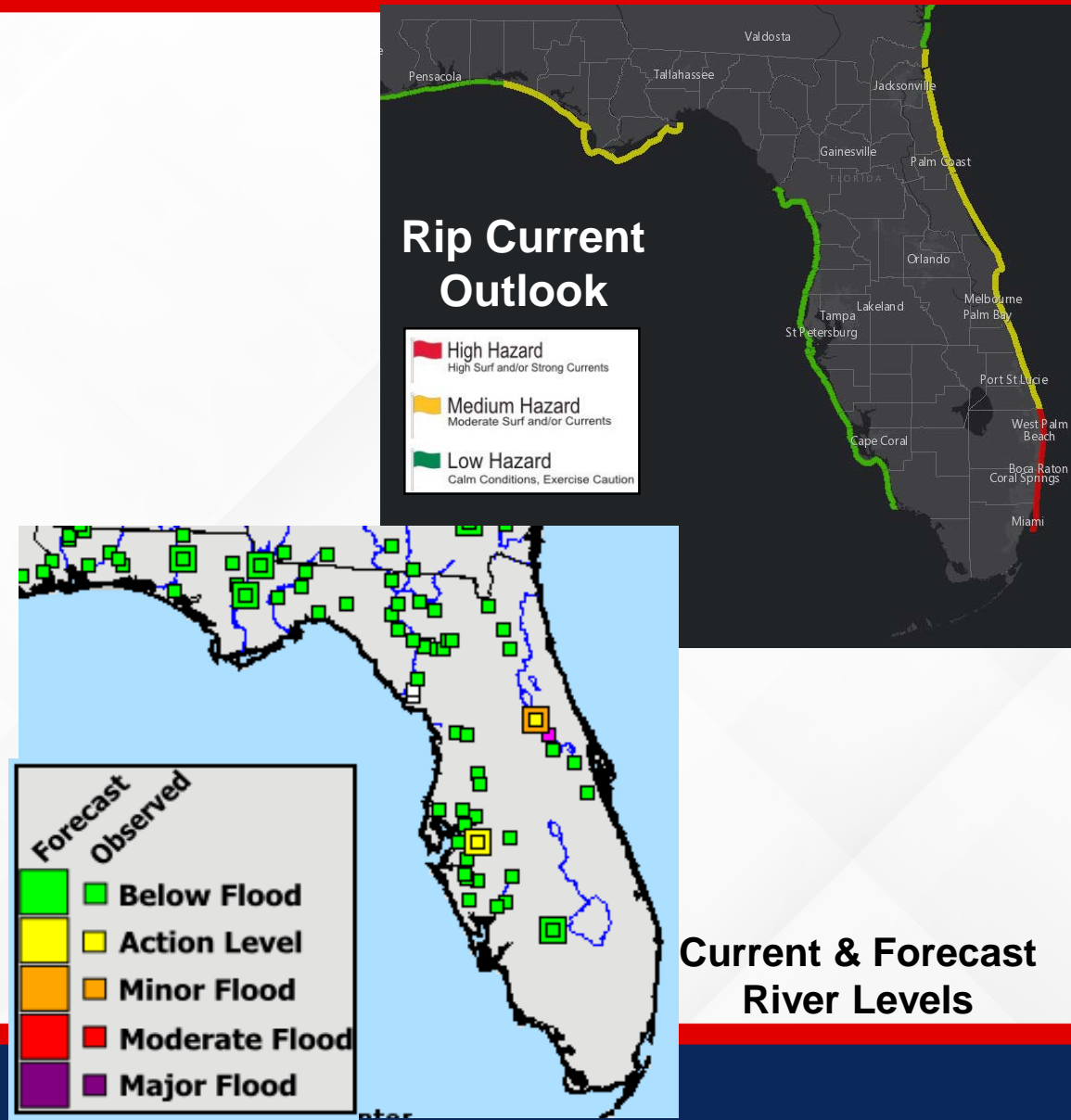
Red Tide has not been observed above background conditions along any Florida coastline.

Coastal Flooding: There is no risk for coastal flooding. Winds shifting out of the south to southwest will allow for water levels along the tidal portions of the St. Johns to slowly decline. Tides will continue to return to normal in the wake of the full moon phases.

Flash Flooding: South to southwesterly flow will allow moisture to flow inland from the Gulf of Mexico allowing for showers and thunderstorms to provide heavy and intense downpours, especially along the sea breeze collision. The Weather Prediction Center (WPC) is outlooking a **Marginal Risk (level 1 of 4) for Flash Flooding** across South Florida (along and south of the I-75 corridor). Rainfall totals of 1-2" can be expected with the typical summertime thunderstorm developing, but with increased moisture rainfall totals could reach 3-4" locally. **Instances of ponding** and **localized flooding** will be possible during heavy and intense rainfall, especially where recent rainfall has happened. Urban and low-lying/poor drainage areas cannot rule out **localized flash flooding** within stronger shower and thunderstorm activity.

Riverine Flooding: A **River Flood Warning** is in effect for the [St. Johns River at Astor](#) as elevated water levels remain within **minor flood stage** due to the backed up waters within the tidal portions of the basin. With winds returning to offshore flow, and tides returning to normal, water levels will continue to slowly decline and flush out of the basin. The basin will likely return to Action Stage by mid-to-late week as offshore flow continues to help flush out water levels. The Alafia River at Lithia remains within Action Stage due to recent heavy rainfall across West-Central Florida, but riverine flooding is not expected. For more details, please visit the [River Forecast Center](#).

Lake Okeechobee's average elevation is 14.00 feet, which is within the operational band and 0.87 feet above normal for this time of year.



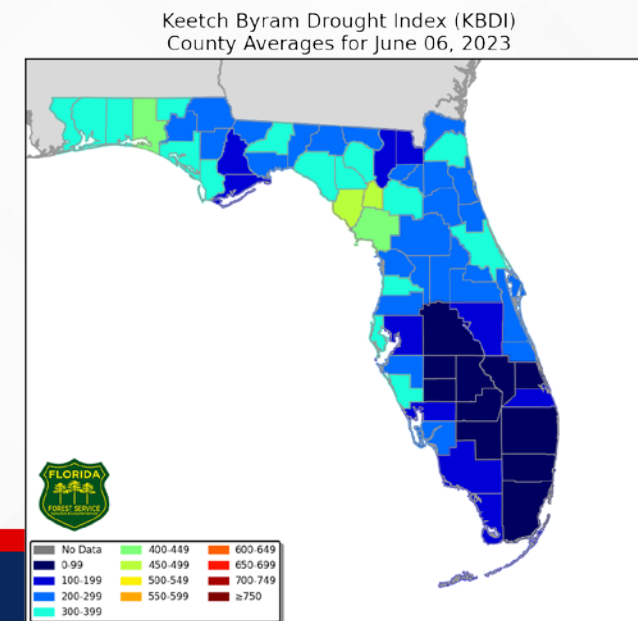
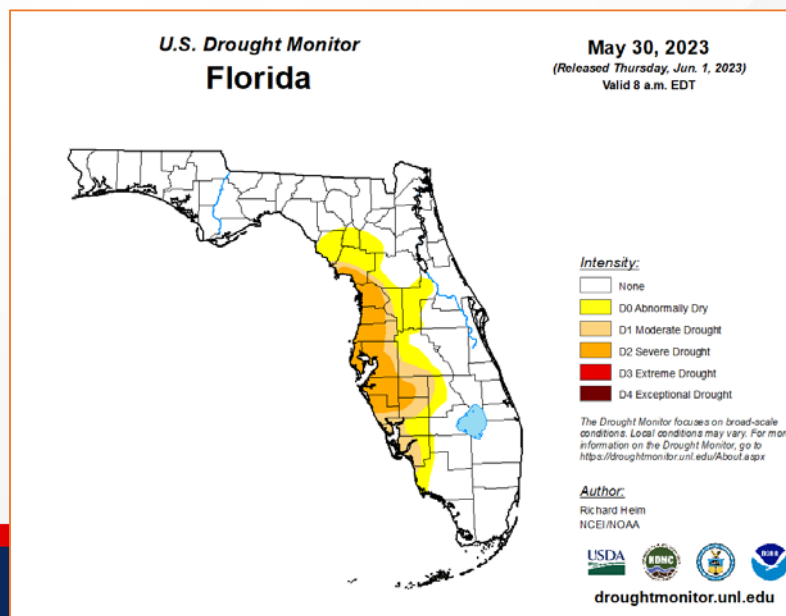
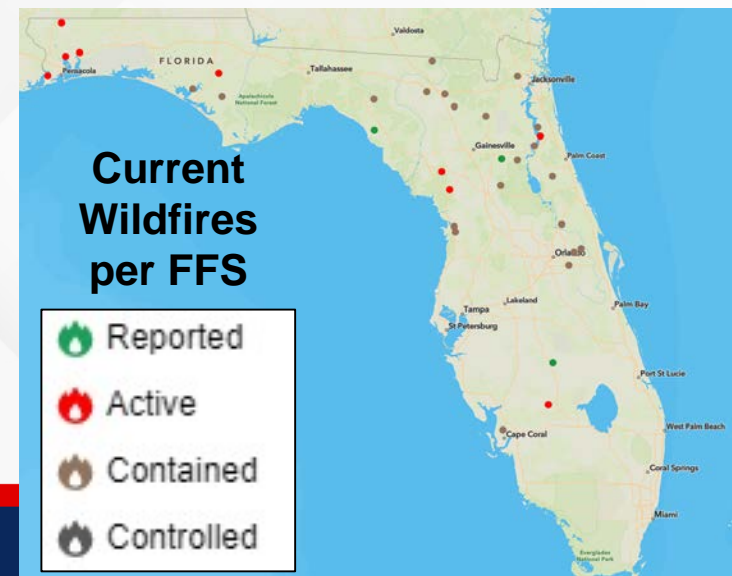


Drought & Fire Weather

Fire Weather: Winds shifting out of the south to southwest today will help to bring moisture inland from the Gulf of Mexico allowing for scattered showers and thunderstorms to develop along the sea breeze collision. Relative humidity values will remain above critical thresholds, with the lowest values across in the upper 40s to low 50s north of the I-10 corridor. Recent rainfall across the state will help to keep soil saturated and limiting the chance for wildfires to spread. *The main concern today will be thunderstorms that develop will be capable of producing frequent lightning, as well as gusty and erratic thunderstorm winds.* According to the [Florida Forest Service](#), there are 33 active wildfires across the state, burning approximately 473 acres.

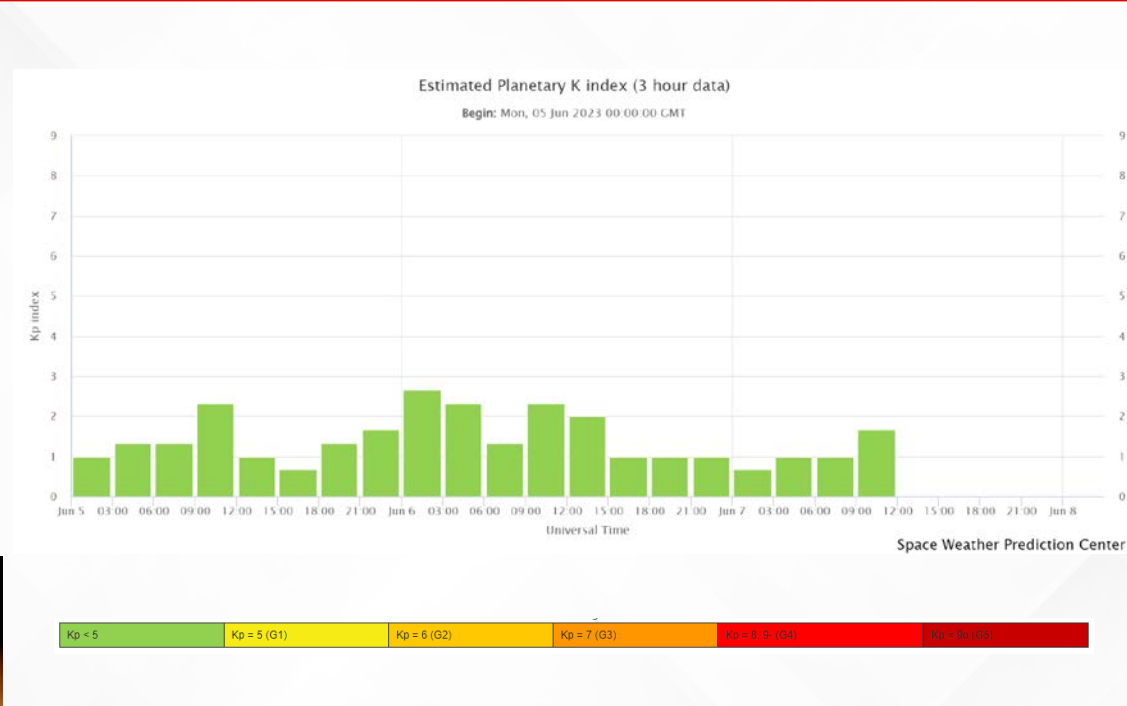
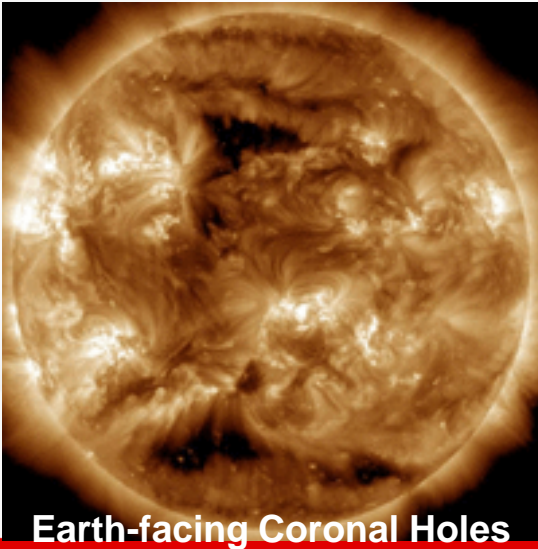
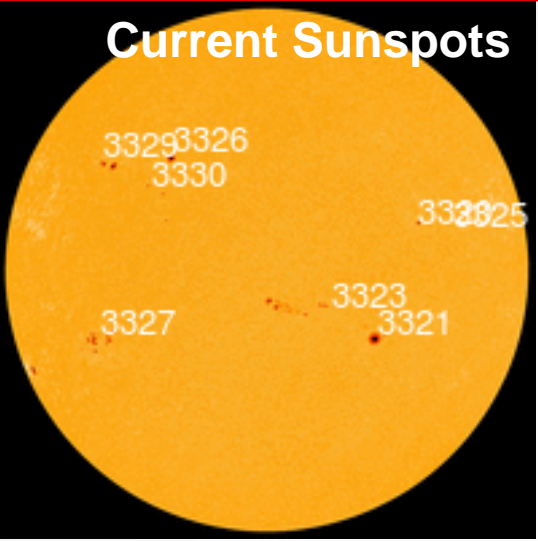
Drought: Widespread rainfall across Florida has been observed over the past week, with 5-9" of rain reported across portions of the Florida Peninsula. Improvements in drought conditions were noted on this week's Drought Monitor update, with the removal of extreme drought along the West-Central Florida Coast. **Moderate to severe drought** continues along West Florida as long-term rainfall deficits still exist; however, forecast rainfall this week and weekend will work to reduce ongoing dry conditions.

The Keetch-Byram Drought Index average for Florida is 215 (+13) on a scale from 0 (very wet) to 800 (very dry). There are **zero** Florida counties with an average KBDI over 500 (drought/increased fire danger).





Space Weather



Solar Flare Risk	Active Watches & Warnings	Past 24 hours
M-class: 30%	Geomagnetic Storm: None	M4 Solar Flare
X-class: 10%	Radiation Storm: None	R1 Radio Blackouts
48 Hour Geomagnetic Forecast		
6/7		6/8
Max Kp= 2 (G0)		Max Kp= 4 (G0)
Chance of minor activity = 1% severe activity = 1%		Chance of minor activity = 5% severe activity = 1%

Space Weather: Solar activity is expected to be low, with a chance for strong (M-class) solar flares and a slight chance for significant (X-class) flares. A new active, #3227, harbors energy within its magnetic field that could produce strong to significant solar flares. While no minor (R1) or greater radio blackouts are expected, if region #3227 remains active it could spark some minor radio blackouts. A Coronal Mass Ejection (CME) from June 4 is expected to pass by Earth's magnetic field and could provide a glancing blow. The Earth's geomagnetic field will experience unsettled to active levels, which could cause minor (G1) geomagnetic storm impacts. The overall space threat to Florida remains very low.



SWO Communications Systems & Contact Information

Equipment	Contact	Status	Comments
Phone:	800-320-0519, 850-815-4001, 850-591-0071 (Backup Cell)	Operational	
Backup Landline:	850-487-3234, 850-487-3228	Operational	
Fax:	850-815-4979	Operational	
Email:	SWP@em.myflorida.com	Operational	
SWO Tracker:	https://apps.floridadisaster.org/SWO/	Operational	
SLERS:	DEM Statewide	Operational	
FNARS:	WGY974	Operational	
Federal NAWAS:	State Watch Office	Operational	
EMnet Message:	FL.000- State Watch Office	Operational	
EMnet Voice:	FL SWP- State Watch Office	Operational	
IPAWS:	LP.1 Stations via Emnet	Operational	
FIN:	SOFEOC	Operational	
Satellite Phones:	888-890-5178 or 480-263-8838	Operational	
Website:	http://www.floridadisaster.org	Operational	

Users wishing to subscribe (approval pending) to this distribution list, register at:

https://public.govdelivery.com/accounts/FLDEM/subscriber/new?topic_id=Morning_SITREP