



# **Florida Division of Emergency Management State Watch Office**

## **Morning Situation Report**

Monday, October 17, 2022



# State Emergency Operations Center Activation Level

Level 1 Activation



# SERT On-Call Personnel

Position	Personnel	Phone	Email
Operations Chief	Ian Guidicelli	(850) 354-3044	<a href="mailto:Ian.Guidicelli@em.myflorida.com">Ian.Guidicelli@em.myflorida.com</a>
Watch Officer	Taylor Cheney	(850) 545-4047	<a href="mailto:Taylor.Cheney@em.myflorida.com">Taylor.Cheney@em.myflorida.com</a>
Duty Officer	Phillip Thomas	(850) 519-6961	<a href="mailto:Phillip.Thomas@em.myflorida.com">Phillip.Thomas@em.myflorida.com</a>
Operations Officer- Day	Benjamin Mauro	(850) 815-4001	<a href="mailto:SWP@em.myflorida.com">SWP@em.myflorida.com</a>
Operations Officer- Swing	Cassi Farestvedt	(850) 815-4001	<a href="mailto:SWP@em.myflorida.com">SWP@em.myflorida.com</a>
Operations Officer- Night	Matthew Peloso	(850) 815-4001	<a href="mailto:SWP@em.myflorida.com">SWP@em.myflorida.com</a>
Meteorologist	Kennedy Tartt	(850) 567-6368	<a href="mailto:Kennedy.Tartt@em.myflorida.com">Kennedy.Tartt@em.myflorida.com</a>
Plans Chief	Kaylynn Perry	(850) 254-5657	<a href="mailto:Plans_Command@em.myflorida.com">Plans_Command@em.myflorida.com</a>
Logistics Chief	Kenneth DeCastro	(850) 567-1943	<a href="mailto:Kenneth.DeCastro@em.myflorida.com">Kenneth.DeCastro@em.myflorida.com</a>
Human Services Director	Pam Hughes	(850) 528-5638	<a href="mailto:Pamela.Hughes@em.myflorida.com">Pamela.Hughes@em.myflorida.com</a>
Emergency Services	Rob Dietrich	(850) 727-3414	<a href="mailto:Robert.Dietrich@em.myflorida.com">Robert.Dietrich@em.myflorida.com</a>
Infrastructure Branch Director	Christina Goetzman	(850) 519-8581	<a href="mailto:Christina.Goetzman@em.myflorida.com">Christina.Goetzman@em.myflorida.com</a>
ESF 8 On-Call	Hunter Stafford	(866) 786-4673	<a href="mailto:DLDOHDutyOfficers@flhealth.gov">DLDOHDutyOfficers@flhealth.gov</a>
Public Information Officer	Alecia Collins	(850) 591-9544	<a href="mailto:Alecia.Collins@em.myflorida.com">Alecia.Collins@em.myflorida.com</a>
DEM Finance and Admin	Susanne McDaniel	(850) 591-3842	<a href="mailto:Susanne.McDaniel@em.myflorida.com">Susanne.McDaniel@em.myflorida.com</a>



# Regional Coordination Team

Team	County Location	Status / Activities
Region 1: Jim Roberts	In State	Ian Response Coordination
Region 2: Willie Bouie	In State	Ian Response Coordination
Region 3: Pam Bergstrom	In State	Ian Response Coordination
Region 4: Paul Siddall	In State	Ian Response Coordination
Region 5: Austin Beeghly	In State	Ian Response Coordination
RC Manager	In State	Ian Response Coordination
Region 6: Jodie Fiske		
Region 7: Claudia Baker	In State	Ian Response Coordination



RC Status
Out of Region-Incident Response
Normal Operations
Delayed Response
Out of Service / Unavailable



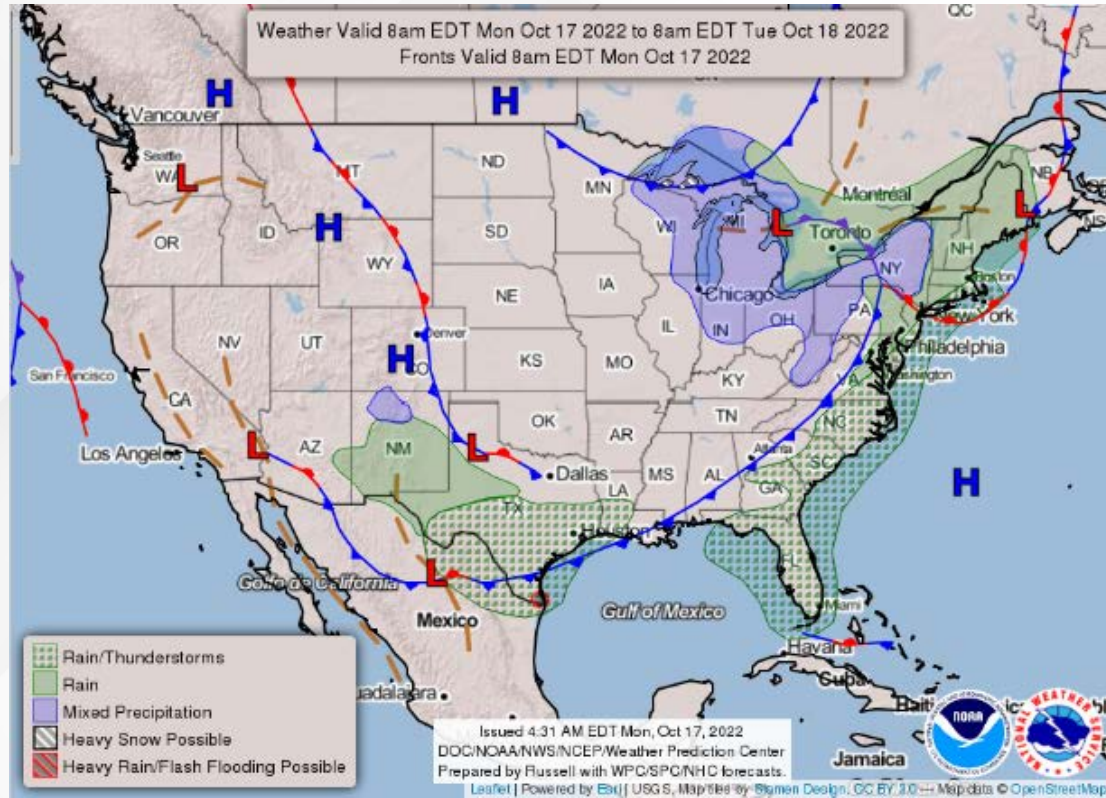
# Recovery Regional Coordination Team

Team	County Location	Status / Activities
Region 1: Elizabeth Caison	In State	Ian Response Coordination
Region 2: Justin Lazzara	In State	Ian Response Coordination
Region 3: Joshua Saunders	In State	Ian Response Coordination
RRCT Manager	In State	Ian Response Coordination
Region 4: Jeremy O'Dell		
Region 5: Shannon Hagan	In State	Ian Response Coordination
Region 6: Marc Purvis	In State	Ian Response Coordination
Region 7: Dana McGeehan	In State	Ian Response Coordination

RRC Status
Normal Operations
Delayed Response
Out of Service / Unavailable



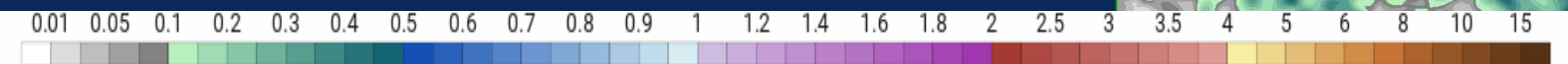
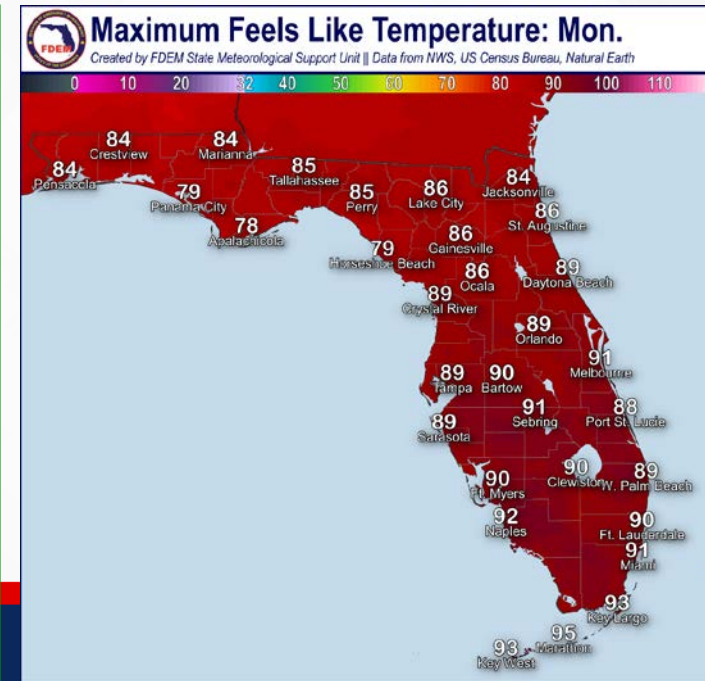
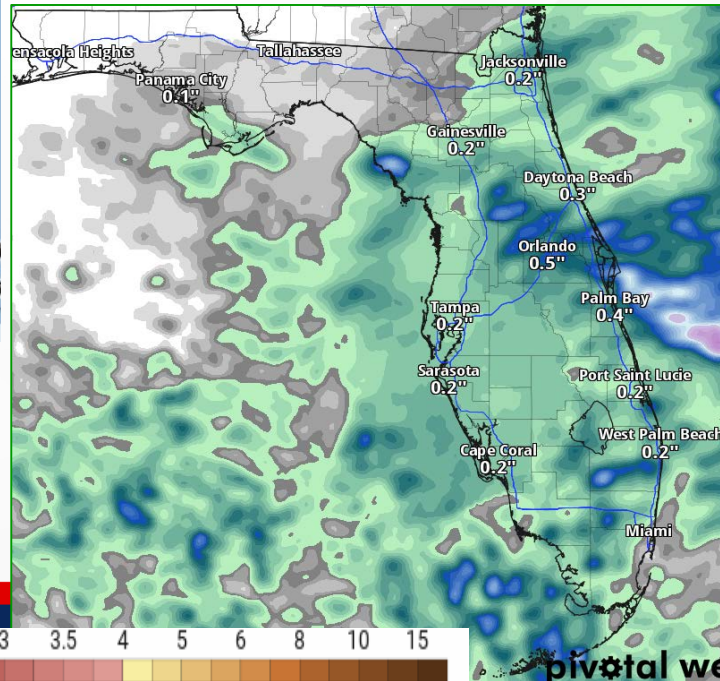
# Meteorology Summary



Today's Weather Map

24-Hour Forecast Rainfall

Threat	R1	R2	R3	R4	R5	R6	R7
Lightning			L	L	L	L	L
Tornado							
Damaging Wind			L	L		L	L
Fog	L	L	L				
Flash Flooding			L		L	L	L
Excessive Heat							
River Flooding			H	L	H	M	
Wildfire	M	M					
Rip Currents	M	M	L	L	M	L	L
Lake Okeechobee Elevation:	15.17 ft. (0.12 ft. Above Normal)						
Keetch-Byram Drought Index:	240 (+8) on a scale from 0 (very moist) to 800 (very dry)						





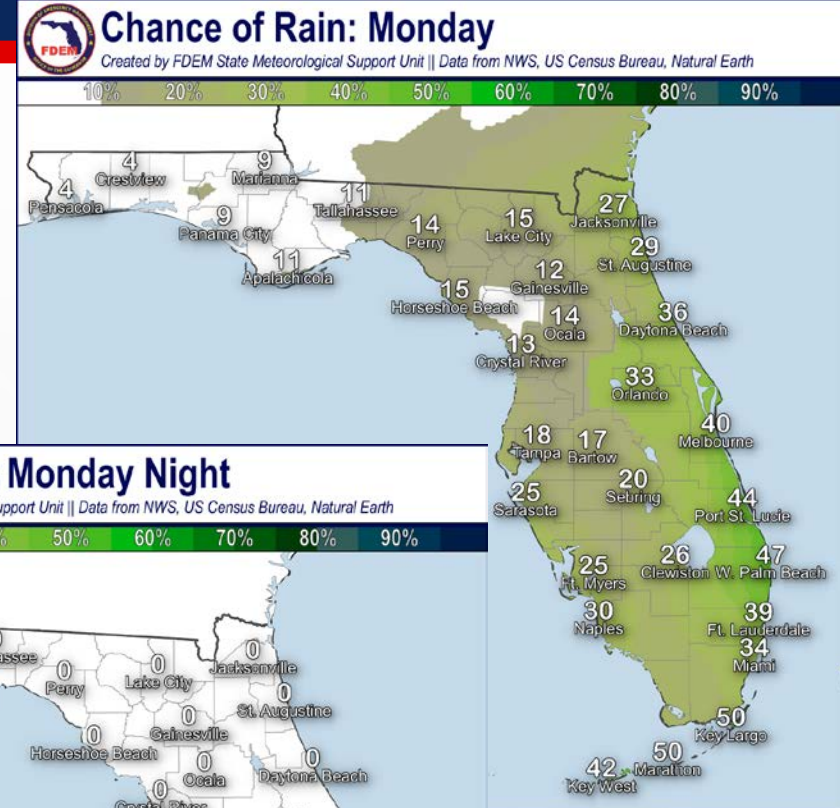
# Meteorology Summary

## Statewide Overview, Next 24 Hours:

Low-level moisture brought towards the Panhandle by southwesterly winds has developed fog along the western Panhandle counties, resulting in a **Dense Fog Advisory** until 10:00 AM EDT. Visibility could be one-quarter of a mile or less at time, creating hazardous driving conditions. As the sun continues to rise this morning, the fog will continue to lift out of the area. A strong cold front is expected to cross through the Panhandle and move southward across the Peninsula today and tonight. Much cooler and drier air will surge southward in the wake of the cold front, providing the coolest temperatures of the season so far beginning Tuesday evening.

Isolated showers and thunderstorms may develop ahead of the cold front along Nature Coast and West-Central Florida late in the morning and then continue moving inland across the Peninsula throughout the afternoon. A **Marginal Risk of Severe Weather (level 1 of 5)** can be expected across Northeast and East-Central Florida as day-time heating could enhance thunderstorm production. Gusty winds, heavy rainfall, and lightning can be expected at time. There remains no organized risk for flash flooding, however stronger cells may develop localized flash flooding in urban areas with poor drainage. Northeast Florida continues to have saturated soils due to rainfall from Hurricane Ian, increasing the chance of localized flash flooding.

High temperatures will rise into the 80s statewide; however, increased cloud cover and rain chances will keep heat indices in the lower 90s across the southern Peninsula. Low temperatures will fall into the lower to middle 50s across interior North Florida, the 60s along the immediate North Florida coastlines and Central Florida, and the 70s across South Florida.

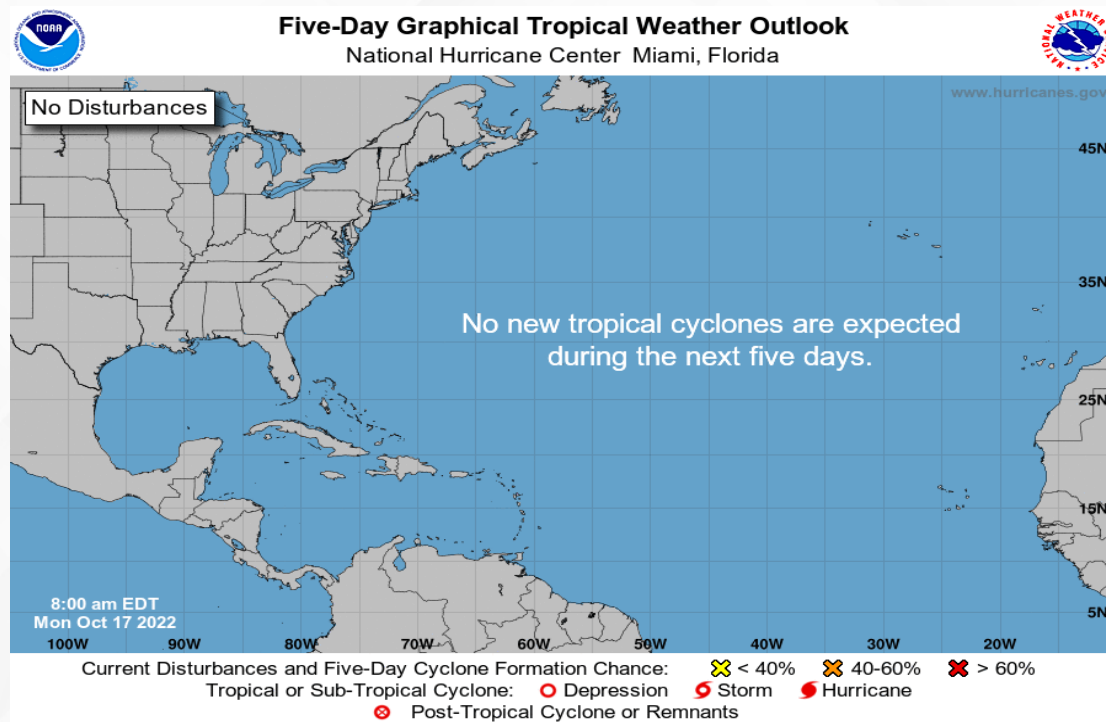
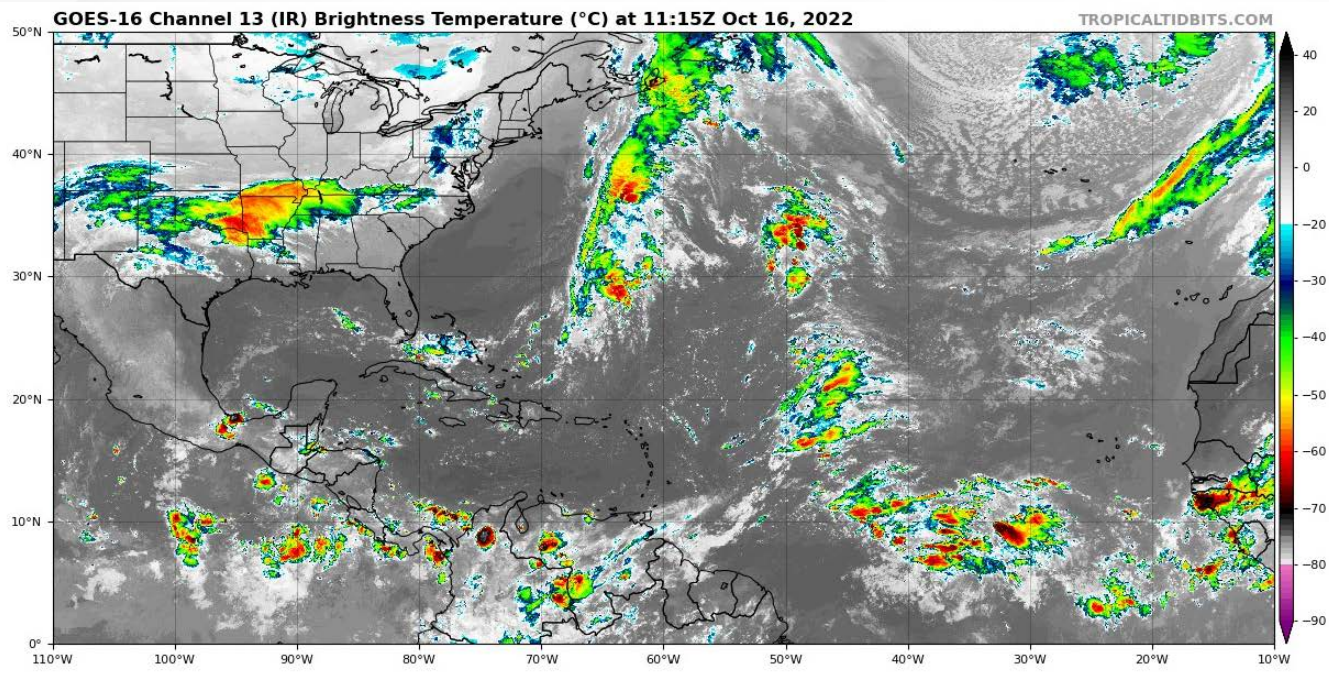




# Tropical Weather

For the latest on the tropics, please visit the National Hurricane Center (NHC) at [www.hurricanes.gov](http://www.hurricanes.gov).

**Tropical cyclone formation is not expected during the next 5 days in the Atlantic Basin.**







# Coastal Hazards & Hydrology

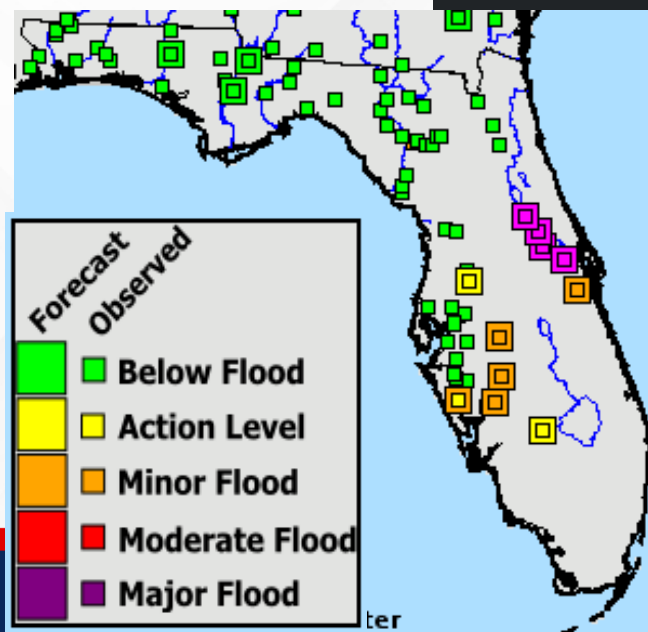
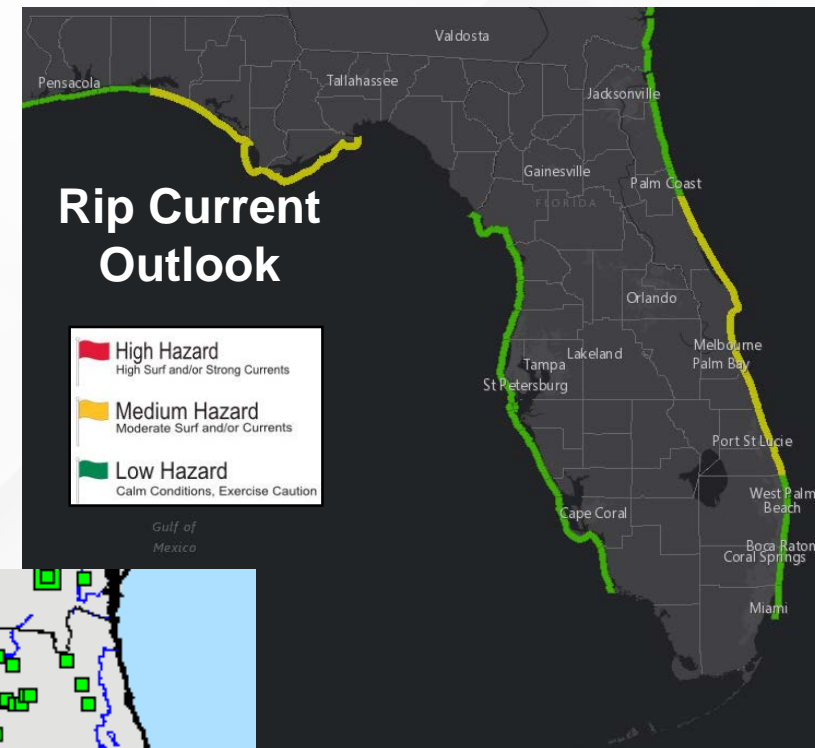
**Rip Currents:** Onshore flow will yield an **elevated rip current risk** along many Atlantic and Panhandle coastlines today. A low risk can be expected elsewhere. For the latest Rip Current Outlook, visit [www.weather.gov/beach](http://www.weather.gov/beach).

**Marine Hazards:** **Wave heights** of 1-3' can be expected statewide. **Red Tide** has not been observed along any Florida beaches over the past week.

**Coastal Flooding:** Water levels continue to gradually decline within the St. Johns River basin as we move out of the higher tidal influences. Runoff from record rainfall during Hurricane Ian over central Florida will result in water level reaching **minor flood stage** during times of high tide.

**Flash Flooding:** Rainfall totals along Northeast and East Central Florida are forecast to remain below 1" of rainfall. Localized rainfall totals may produce higher accumulation totals as heavier thunderstorms could allow for localized flash flooding. Ground remains very saturated across Northeast Florida and along the I-10 corridor, any additional shower and thunderstorm activity may lead to a quicker onset of flooding and ponding of water on roadways.

**Riverine Flooding:** **River Flood Warnings** remain in effect for the **Peace River at Bartow**, **Zolfo Springs** and **Arcadia**, the **Myakka River at Myakka State Park**, and the St. Johns River at **Cocoa**, **Lake Harney**, **Deland**, **Sanford** and **Astor**. West Florida rivers have fallen into **minor flood stage** after reaching record flood stage. **Major flooding** continues along the St. Johns. For more details on specific river levels, please visit the [River Forecast Center](#). **Lake Okeechobee's** average elevation is 15.17 feet, which is within the operational band and 0.12 feet above normal for this time of year.



**Current & Forecast River Levels**

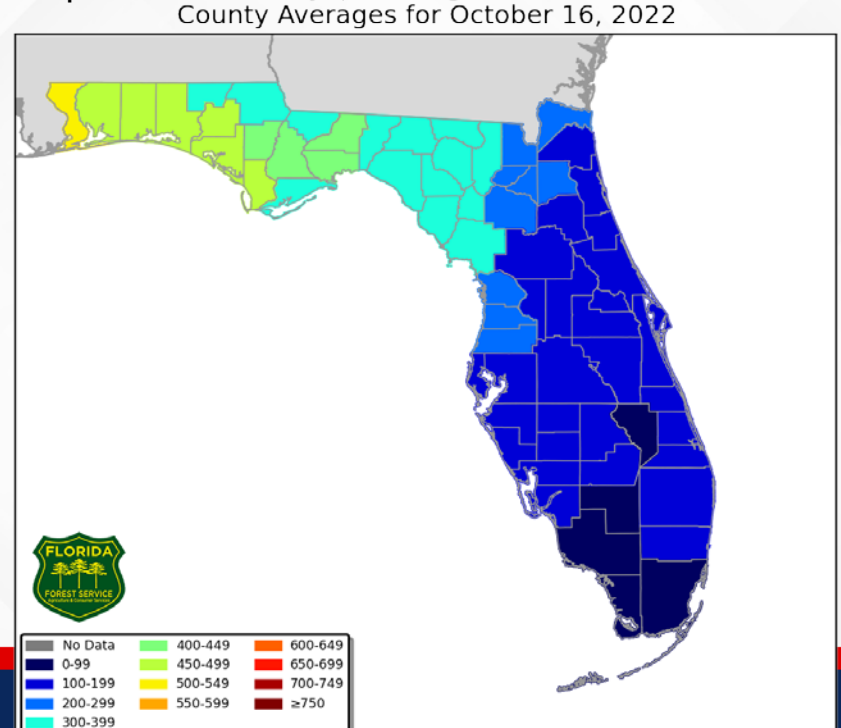
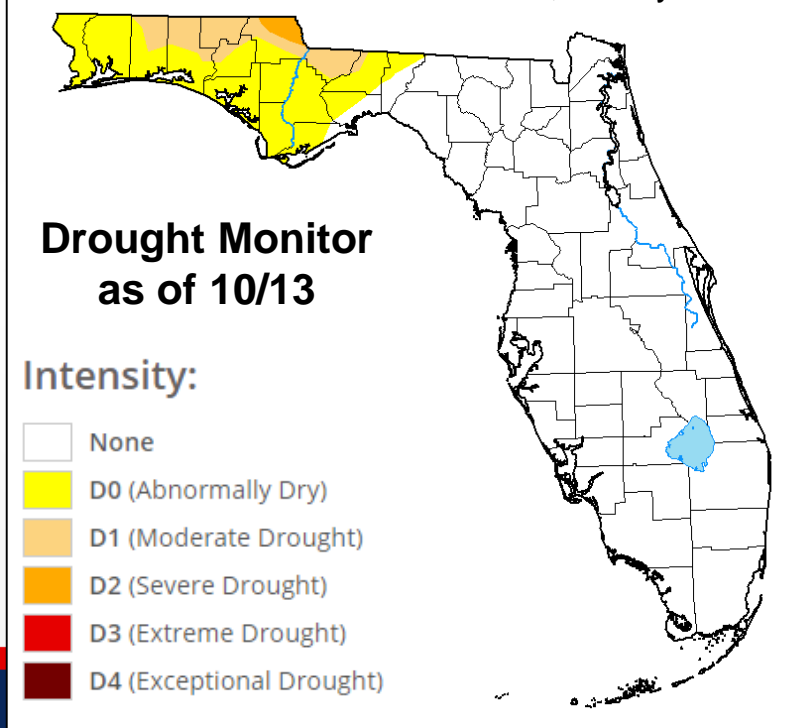


# Drought & Fire Weather

**Fire Weather:** Southwesterly winds ahead of an approaching cold front continue to flow moisture towards the western Panhandle increasing relative humidity values (40-50%). Isolated lightning within spotty thunderstorms along the Panhandle may spark wildfires. Increased chance for fire weather will begin Tuesday as relative humidity values plunge into the teen's and 20s and gusty winds increase in the wake of the cold front. According to the [Florida Forest Service](#), there are 35 active wildfires across the state, burning an approximate 236 acres.

**Drought:** The lack of rainfall across the Panhandle has resulted in an expansion of Abnormal Dryness (*emerging drought*) and **moderate drought** across the Panhandle on this week's updated Drought Monitor. Drying soils and vegetation, combined with increasing 30-day rainfall deficits, have supported the introduction of **severe drought** across interior Jackson County. Elsewhere drought-free conditions continue across the state following historic rainfall from Hurricane Ian.

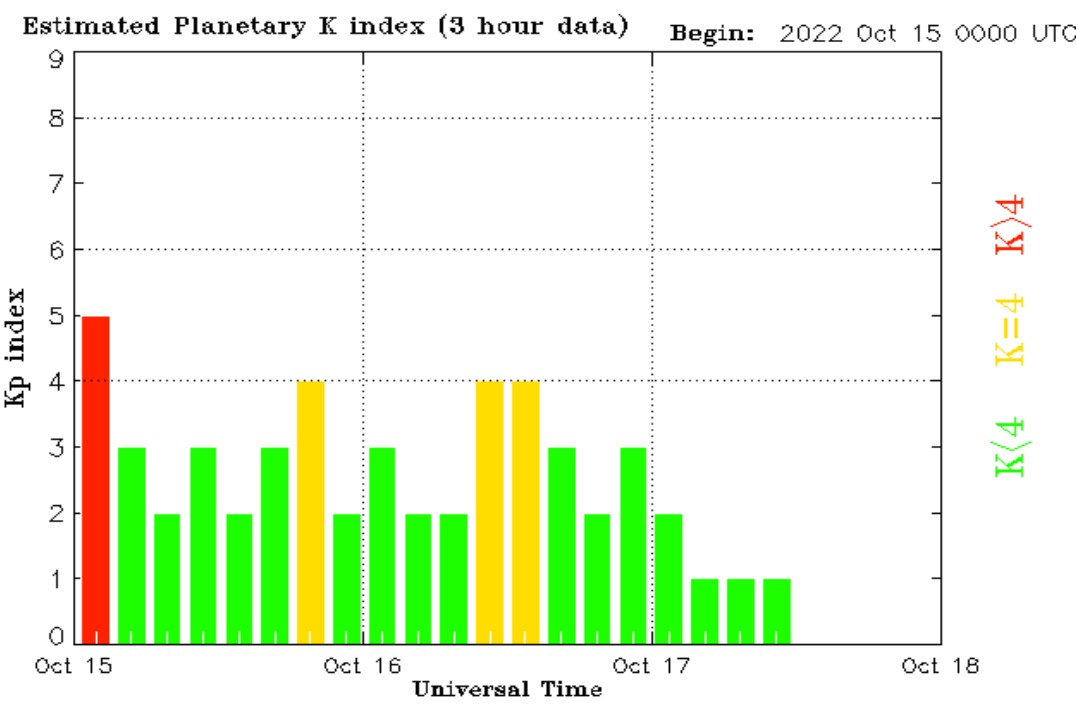
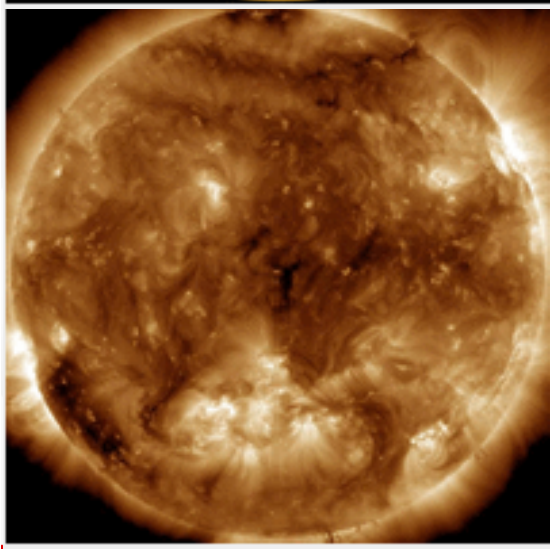
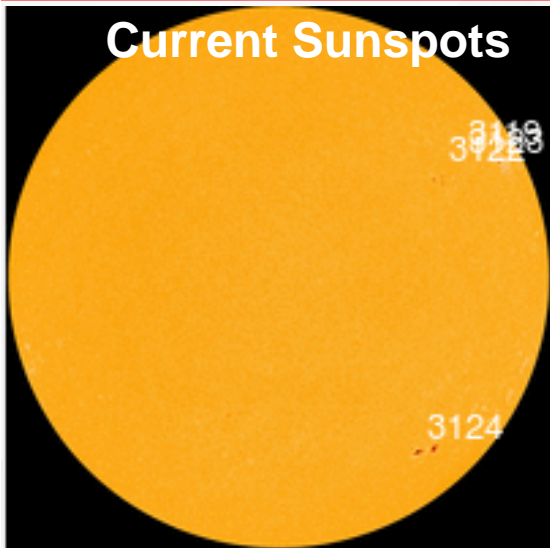
**The Keetch-Byram Drought Index** average for Florida is **240 (+8)** on a scale from 0 (very wet) to 800 (very dry). There is one county with an average KBDI over 500 (drought/increased fire danger). Localized areas across the western Panhandle, mainly west of the Apalachicola River, have a KBDI values over 500.





# Space Weather

## Current Sunspots



Updated 2022 Oct 17 12:30:09 UTC NOAA/SWPC Boulder, CO USA

Solar Flare Risk	Active Watches & Warnings	Past 24 hours
M-class: 5%	Geomagnetic Storm: None	C1 Solar Flare
X-class: 1%	Radiation Storm: None	No Radio Blackouts

48 Hour Geomagnetic Forecast	
10/17	10/18
Max Kp= 3 (G0)	Max Kp= 2(G0)
Chance of minor activity = 10% severe activity = 1%	Chance of minor activity = 1% severe activity = 1%

**Space Weather:** Low solar activity is anticipated today as areas #3112 and #3119 begin to decay. The sunspots pose no threat for solar flares. The chance for M-class and X-class flare remains low.

No Coronal Holes on the Earth-facing side of the sun



# SWO Communications Systems & Contact Information

Equipment	Contact	Status	Comments
<b>Phone:</b>	800-320-0519, 850-815-4001, 850-591-0071 (Backup Cell)	Operational	
<b>Backup Landline:</b>	850-487-3234, 850-487-3228	Operational	
<b>Fax:</b>	850-815-4979	Operational	
<b>Email:</b>	<a href="mailto:SWP@em.myflorida.com">SWP@em.myflorida.com</a>	Operational	
<b>SWO Tracker:</b>	<a href="https://apps.floridadisaster.org/SWO/">https://apps.floridadisaster.org/SWO/</a>	Operational	
<b>SLERS:</b>	DEM Statewide	Operational	
<b>FNARS:</b>	WGY974	Operational	
<b>Federal NAWAS:</b>	State Watch Office	Operational	
<b>EMnet Message:</b>	FL.000- State Watch Office	Operational	
<b>EMnet Voice:</b>	FL SWP- State Watch Office	Operational	
<b>IPAWS:</b>	LP.1 Stations via Emnet	Operational	
<b>FIN:</b>	SOFEOC	Operational	
<b>Satellite Phones:</b>	888-890-5178 or 480-263-8838	Operational	
<b>Website:</b>	<a href="http://www.floridadisaster.org">http://www.floridadisaster.org</a>	Operational	

Users wishing to subscribe (approval pending) to this distribution list, register at:  
[https://public.govdelivery.com/accounts/FLDEM/subscriber/new?topic\\_id=Morning\\_SITREP](https://public.govdelivery.com/accounts/FLDEM/subscriber/new?topic_id=Morning_SITREP)