



TROPICAL UPDATE



11:30 AM EDT

Thursday, June 30, 2022

Potential Tropical Cyclone Two (90%)

Invest 95L – Western Gulf Low (40%)

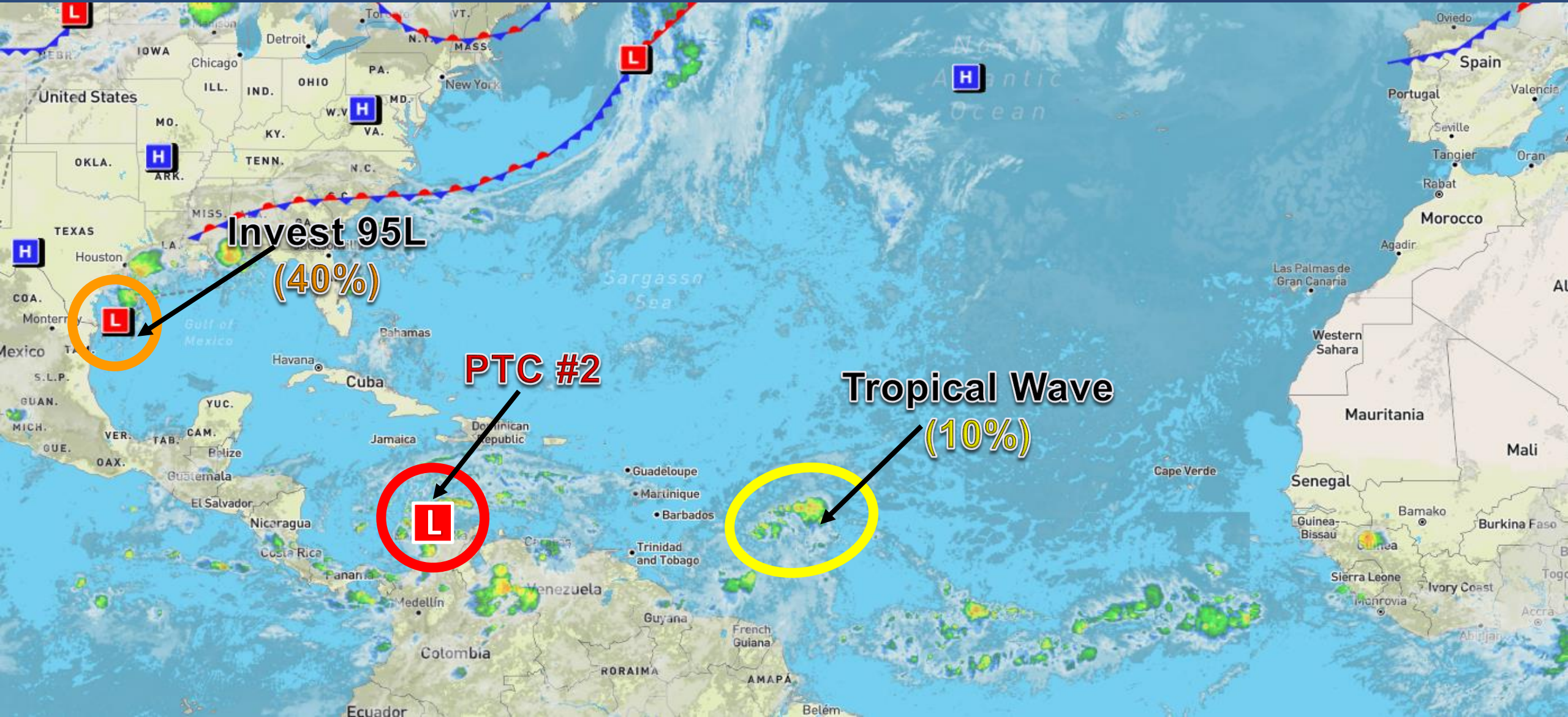
Western Atlantic Tropical Wave (10%)

This update is intended for government and emergency response officials and is provided for informational and situational awareness purposes only. Forecast conditions are subject to change based on a variety of environmental factors. For additional information, or for any life safety concerns with an active weather event please contact your County Emergency Management or Public Safety Office, local National Weather Service forecast office, or visit the National Hurricane Center website at www.hurricanes.gov.



Atlantic Basin Satellite Image

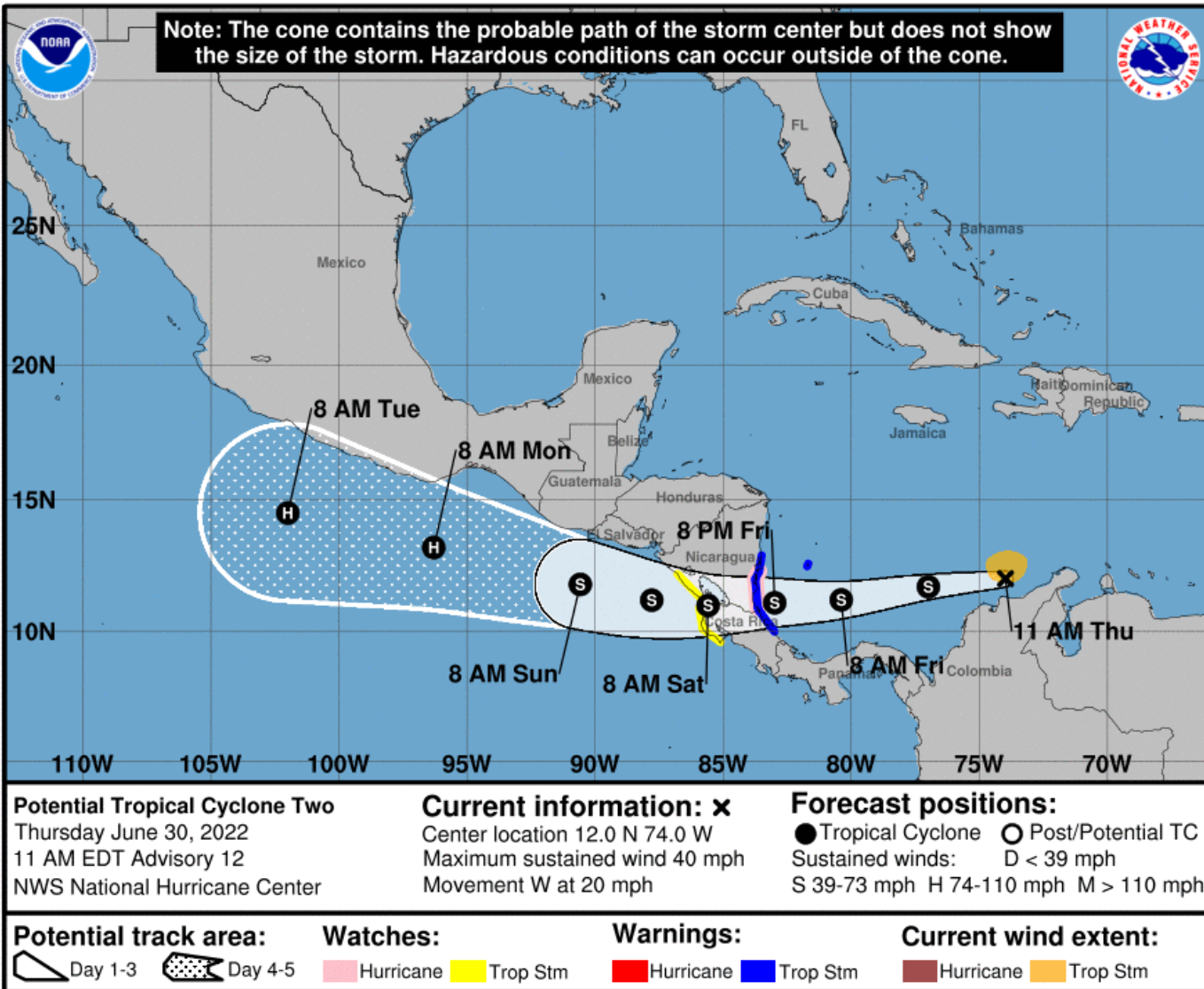
Chance of development: █ None █ Low █ Medium █ High





NHC Forecast

Potential Tropical Cyclone Two ([LINK](#))



Location: 660 miles east of Bluefields, Nicaragua

Maximum Sustained Winds: 40 mph

Movement: West at 20 mph

Forecast: A continued westward motion with a decrease in forward speed is expected through Saturday. PTC #2 will move across the southwestern Caribbean Sea, crossing southern Nicaragua or northern Costa Rica Friday night, and emerge over the Eastern Pacific on Saturday. Some strengthening is forecast through Friday while PTC #2 approaches Central America, but additional restrengthening is forecast this weekend once the system enters the Pacific. Conditions appear conducive for development and PTC #2 is expected to become Tropical Storm Bonnie while slowing down over the southwestern Caribbean Sea.

***Formation chance through 48 hours...high...90%**

***Formation chance through 5 days...high...90%**

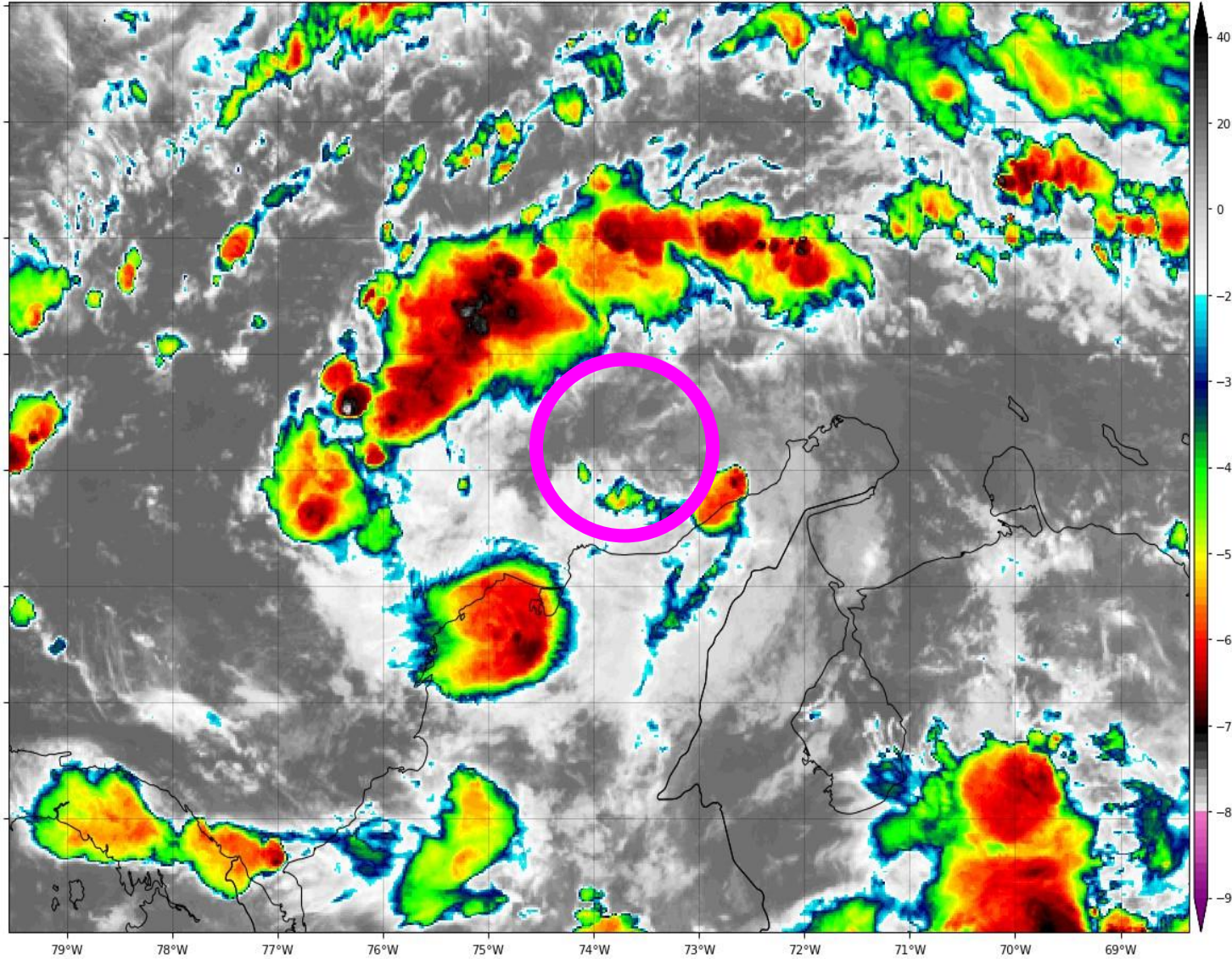


Satellite Imagery

Potential Tropical Cyclone Two

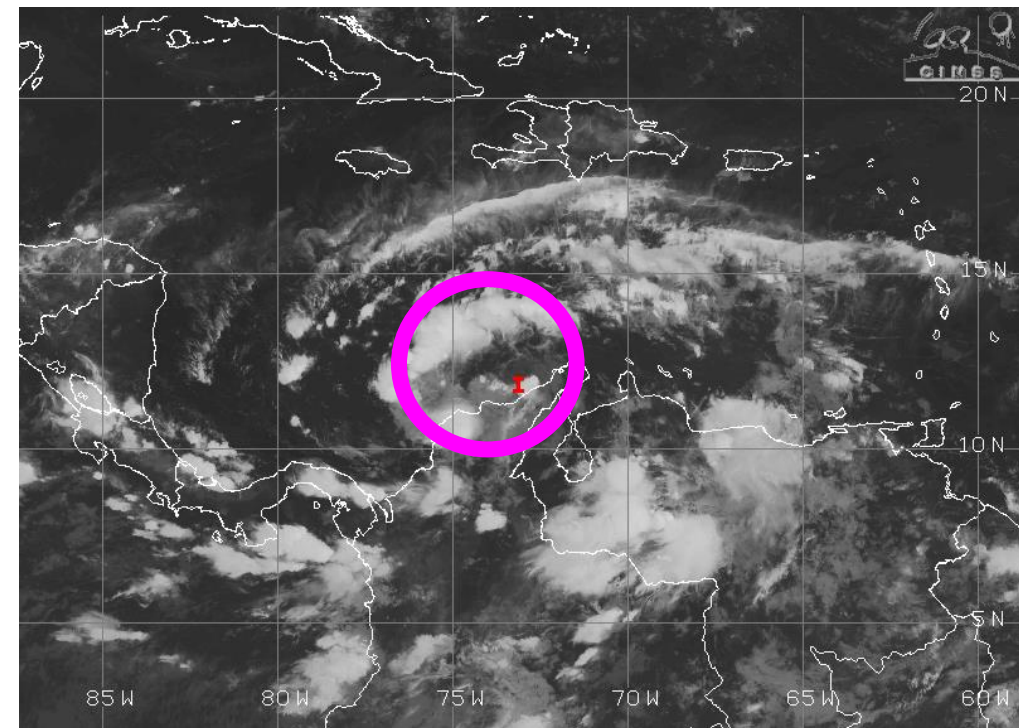
GOES-16 Channel 13 (IR) Brightness Temperature (°C) at 12:25Z Jun 30, 2022

TROPICALTIDBITS.COM



Shower and thunderstorm activity associated with PTC #2 has become rather disorganized as the system as interacted with the South America coastline. Much of the shower and thunderstorm activity is displaced north and west of the center.

Multiple Hurricane Hunter Aircraft are currently investigating PTC #2.





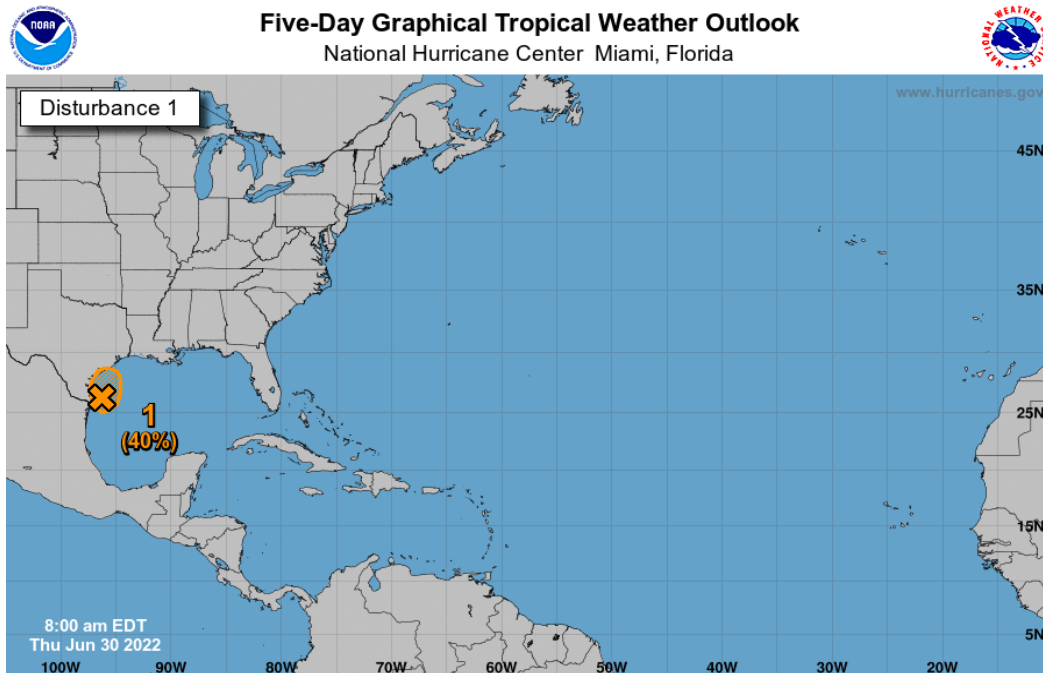
Tropical Weather Outlook

Invest 95L – Western Gulf Low ([LINK](#))

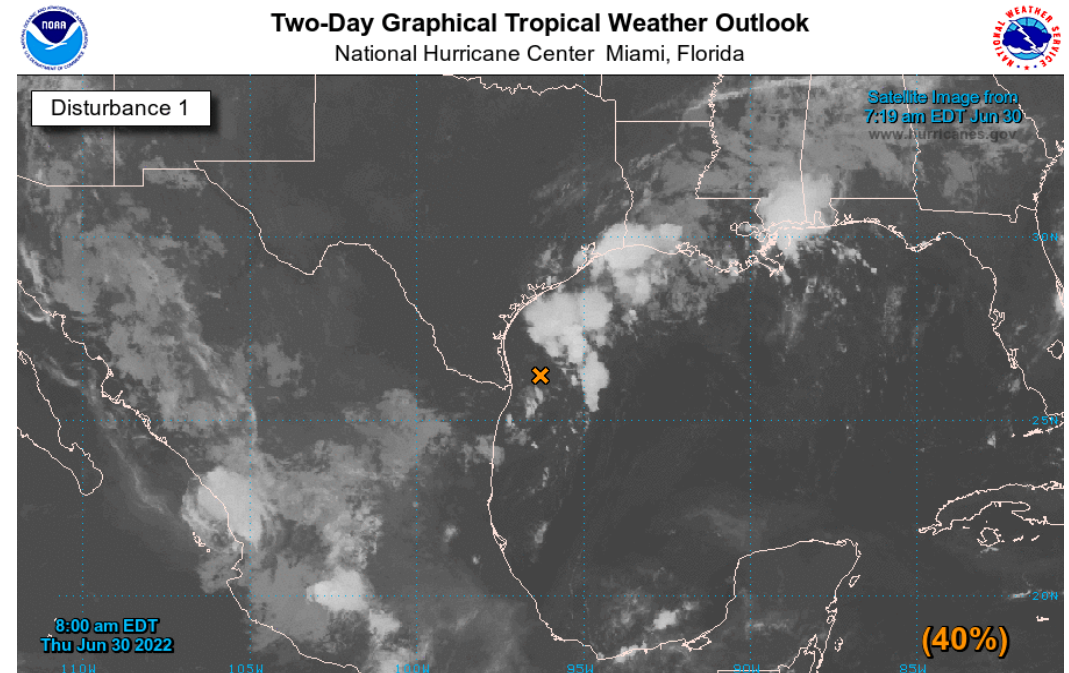
Recent satellite and radar imagery indicate that showers and thunderstorms associated with Invest 95L are showing limited signs of organization. The disturbance, near the southern coast of Texas, is forecast to turn northward and move slowly inland over southeastern Texas later today. Slow development of Invest 95L is possible while the center remains over water, and it could still become a short-lived tropical depression before it moves inland. *This system does not pose a threat to Florida.*

***Formation chance through 48 hours...medium...40%**

***Formation chance through 5 days...medium...40%**



Current Disturbances and Five-Day Cyclone Formation Chance: ✕ < 40% ✕ 40-60% ✕ > 60%
 Tropical or Sub-Tropical Cyclone: ○ Depression ○ Storm ● Hurricane
○ Post-Tropical Cyclone or Remnants



Current Disturbances and Two-Day Cyclone Formation Chance: ✕ < 40% ✕ 40-60% ✕ > 60%
 Tropical or Sub-Tropical Cyclone: ○ Depression ○ Storm ● Hurricane
○ Post-Tropical Cyclone or Remnants

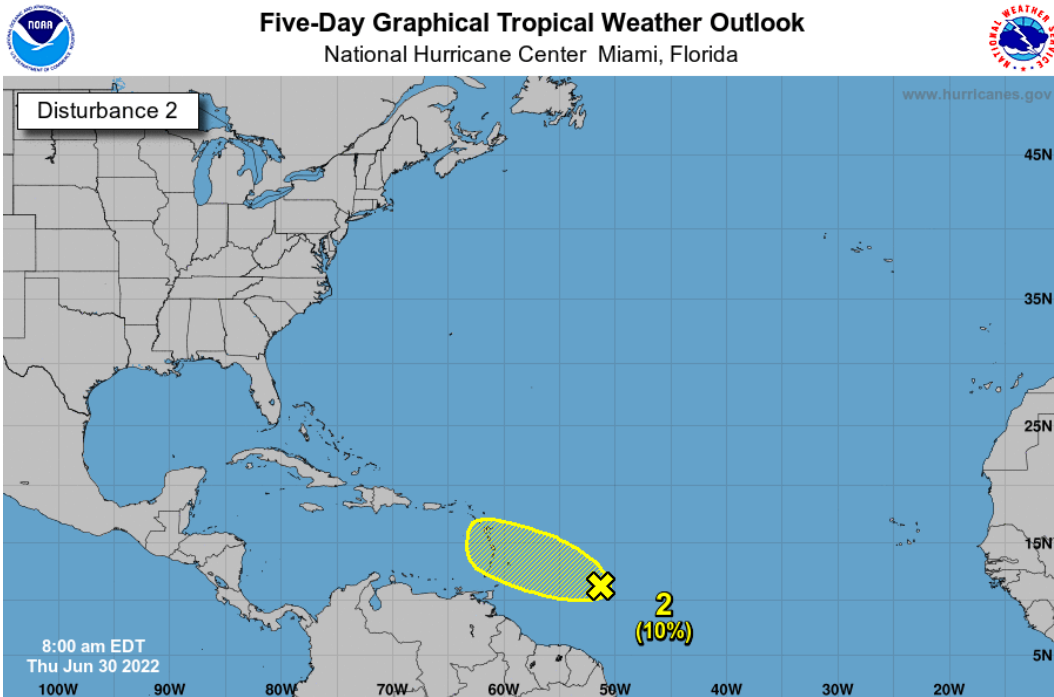


Tropical Weather Outlook

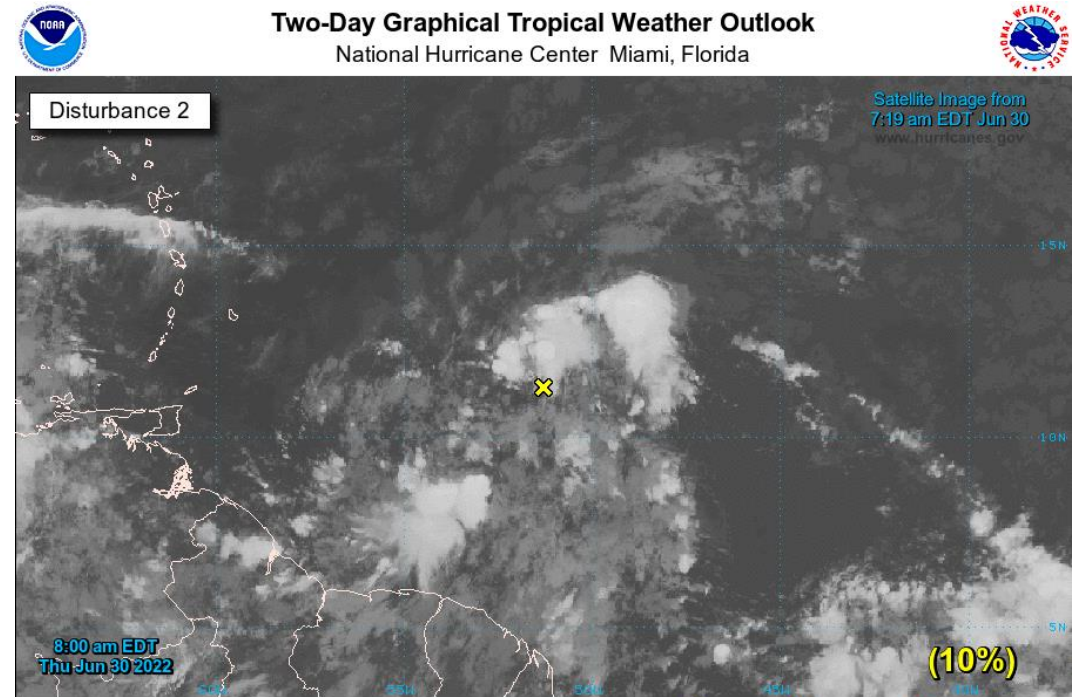
Western Atlantic Tropical Wave ([LINK](#))

A tropical wave located several hundred miles east of the Windward Islands is producing disorganized showers and thunderstorms. Any development of this system should be slow to occur while the wave moves west-northwestward during the next day or two. The wave is forecast to move over the Windward Islands on Friday and then emerge over the eastern Caribbean Sea by the weekend, where further development is unlikely due to unfavorable conditions. *This system does not pose a threat to Florida.*

- *Formation chance through 48 hours...low... 10%
- *Formation chance through 5 days...low...10%



Current Disturbances and Five-Day Cyclone Formation Chance: ✕ < 40% ✕ 40-60% ✕ > 60%
 Tropical or Sub-Tropical Cyclone: ○ Depression ◉ Storm ⦿ Hurricane
⦿ Post-Tropical Cyclone or Remnants



Current Disturbances and Two-Day Cyclone Formation Chance: ✕ < 40% ✕ 40-60% ✕ > 60%
 Tropical or Sub-Tropical Cyclone: ○ Depression ◉ Storm ⦿ Hurricane
⦿ Post-Tropical Cyclone or Remnants



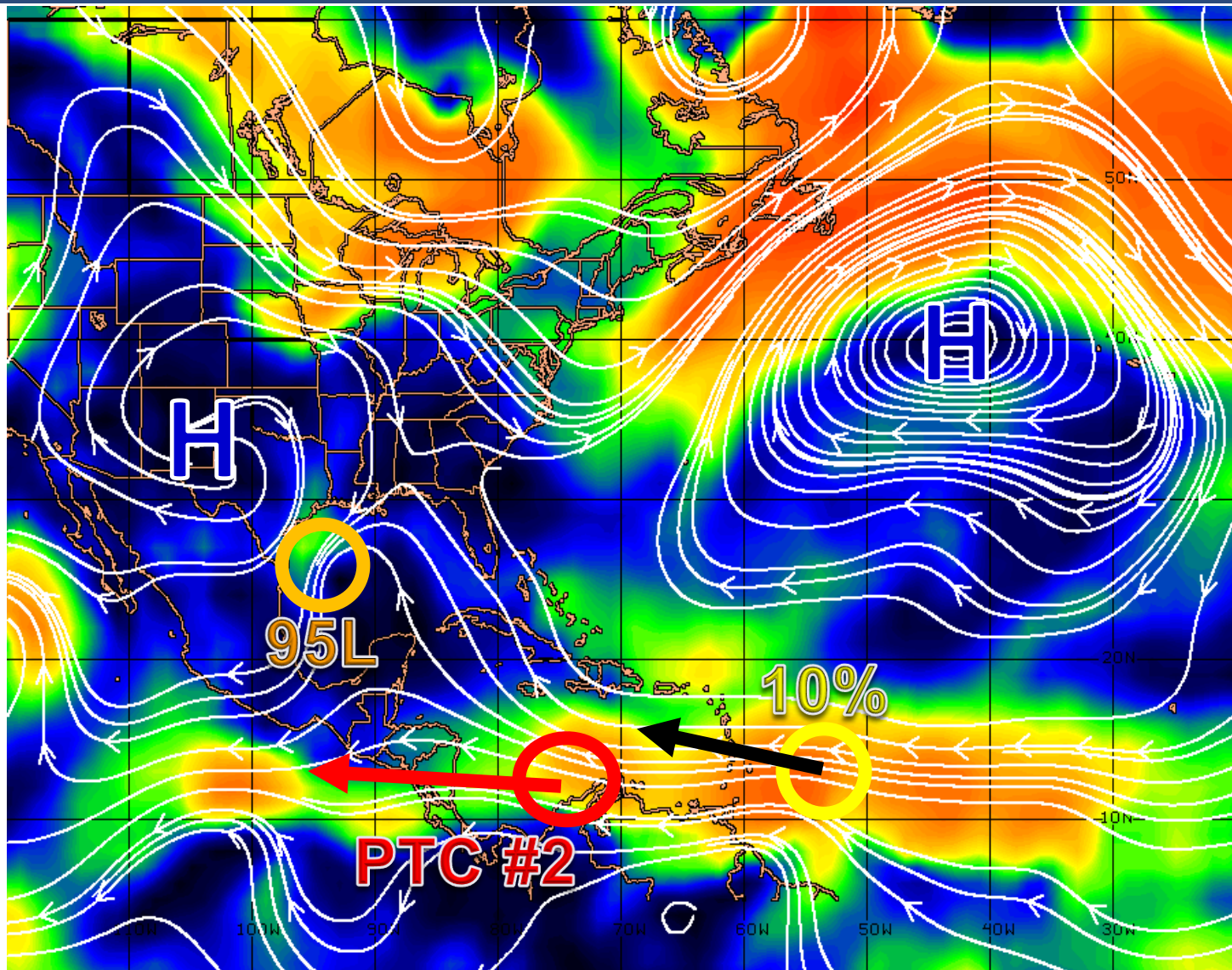
Steering Currents

What is Moving the System?

Color denotes the movement speed through the atmosphere and thin white lines denote direction. Tightly clustered white lines represent faster movement as well.

PTC #2 and the western Atlantic Wave will be pulled westward into the Caribbean Sea by a large area of high pressure to the north.

Invest 95L in the Gulf will continue to drift northward around high pressure in the southern Plains. Lower steering wind speeds will result in a slower-moving system.



Fast Moving Storm

Fast Moving Storm

Typical Moving Storm

Slow Moving Storm



Wind Shear

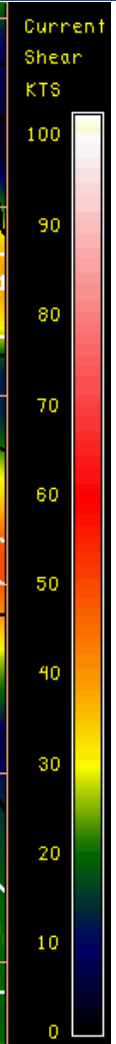
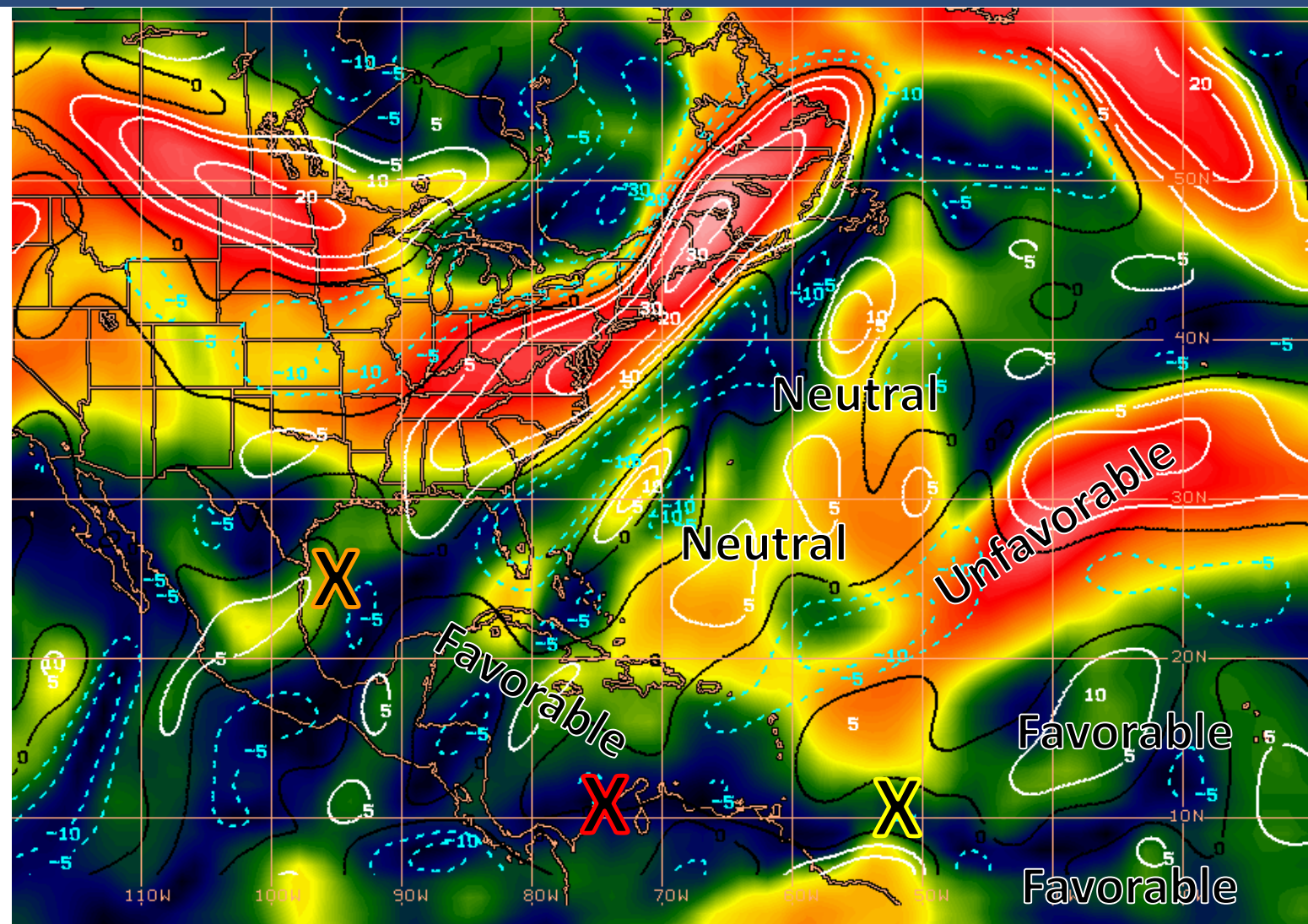
Is the environment favorable for the system?

Color denotes the amount of wind shear and the lines denote how it have changed over the last 24 hours (dotted lines show decreasing shear and solid lines show increasing).

Wind shear will be fairly low over the coastal waters of Nicaragua and Costa Rica; this may allow PTC #2 to gradually organize and strengthen.

The western Atlantic Wave may encounter less favorable conditions as the disturbance moves west-northwest toward the Windward Islands. Higher wind shear will limit the extent of further development.

Low wind shear over the Gulf of Mexico could support the short-lived development of Invest 95L near the Texas coastline.



HIGH Shear (Unfavorable)

HIGH Shear (Unfavorable)

MODERATE Shear (Neutral)

LOW Shear (Favorable)

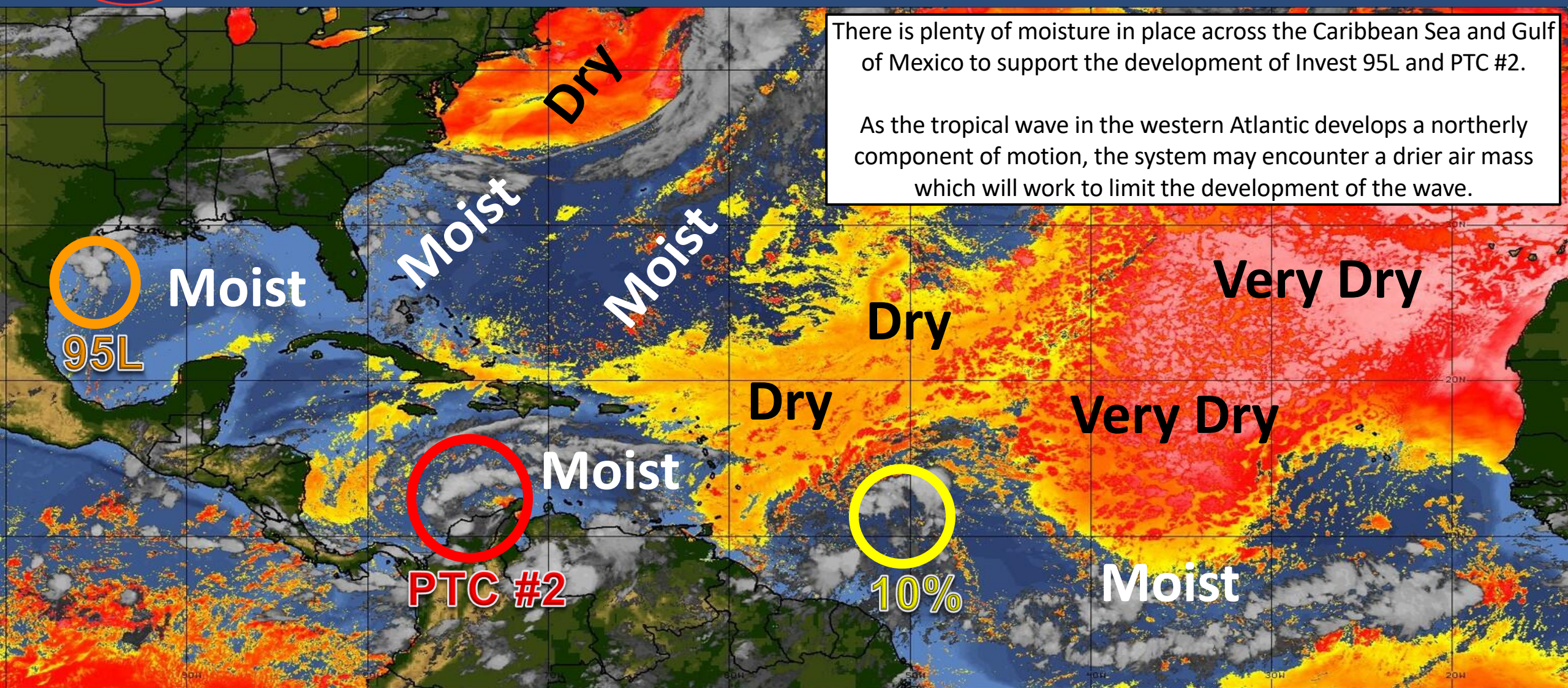
Shear Tendency (KTS) Over Past 24 Hours: Increasing ——— Decreasing - - - -



Dry Air & Saharan Dust

Is the environment favorable for the system?

Color denotes concentration of Saharan Dust or dry, stable air.



There is plenty of moisture in place across the Caribbean Sea and Gulf of Mexico to support the development of Invest 95L and PTC #2.

As the tropical wave in the western Atlantic develops a northerly component of motion, the system may encounter a drier air mass which will work to limit the development of the wave.

LESS <----- DRY AIR (LOW/MID-LEVEL) AND/OR DUSTY SAL AIRMASS -----> MORE



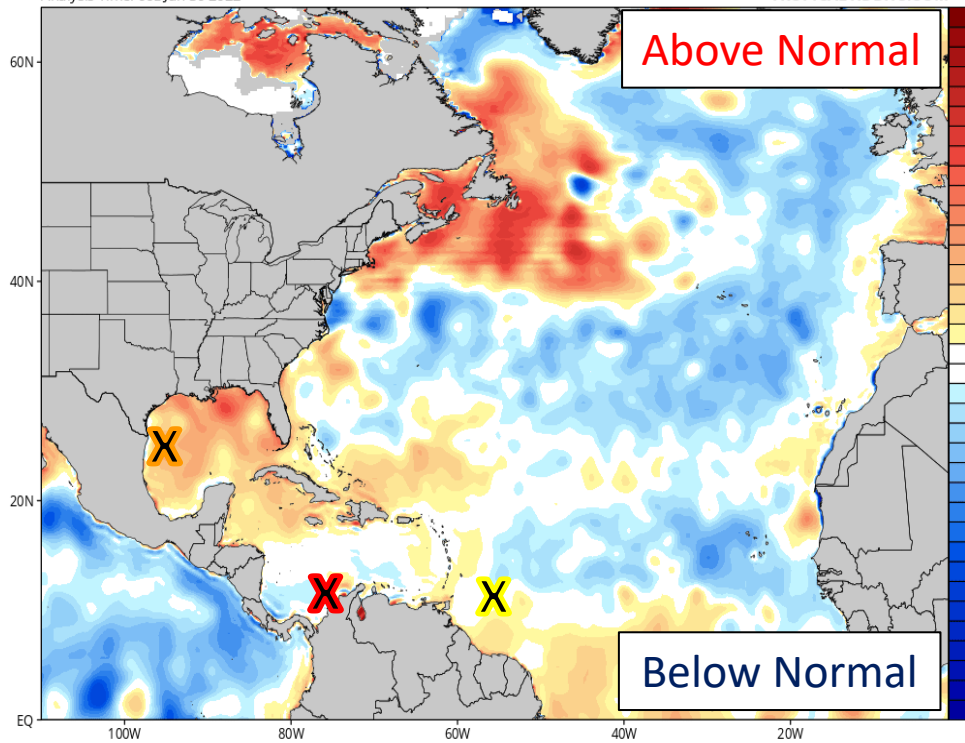
Sea Surface Temperatures & Anomalies

Is the ocean favorable for the system?

Temperatures are warm enough to support tropical development across the Gulf of Mexico, Caribbean, and tropical Atlantic. Water temperatures are above normal for this time of year over the Gulf of Mexico and near the Bahamas.

CDAS Sea Surface Temperature Anomaly (°C) (based on CFSR 1981-2010 Climatology)
Analysis Time: 06z Jun 30 2022

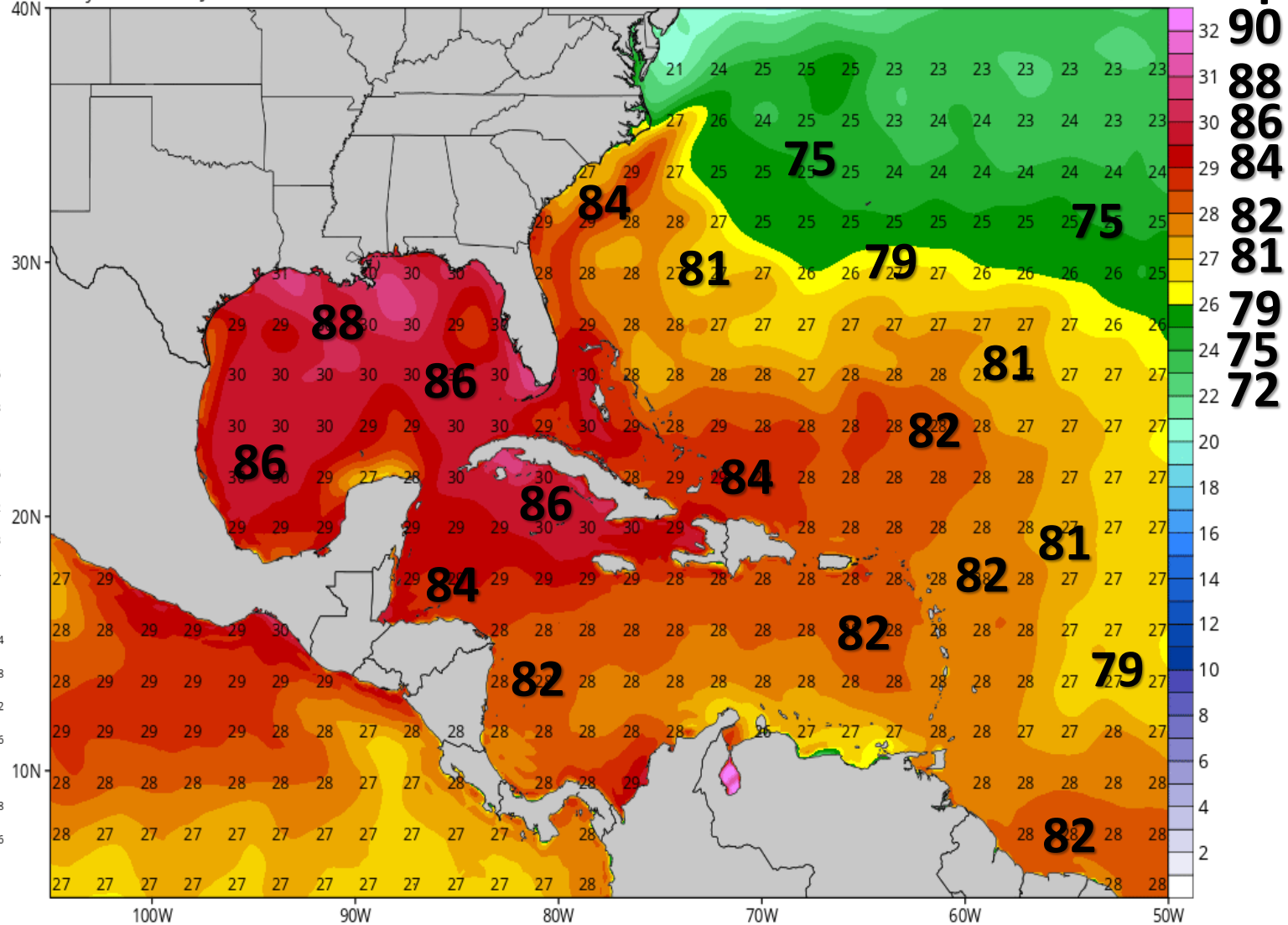
TROPICALTIDBITS.COM



CDAS Sea Surface Temperature (°C)

Analysis Time: 06z Jun 30 2022

TROPICALTIDBITS.COM





Model Forecasts

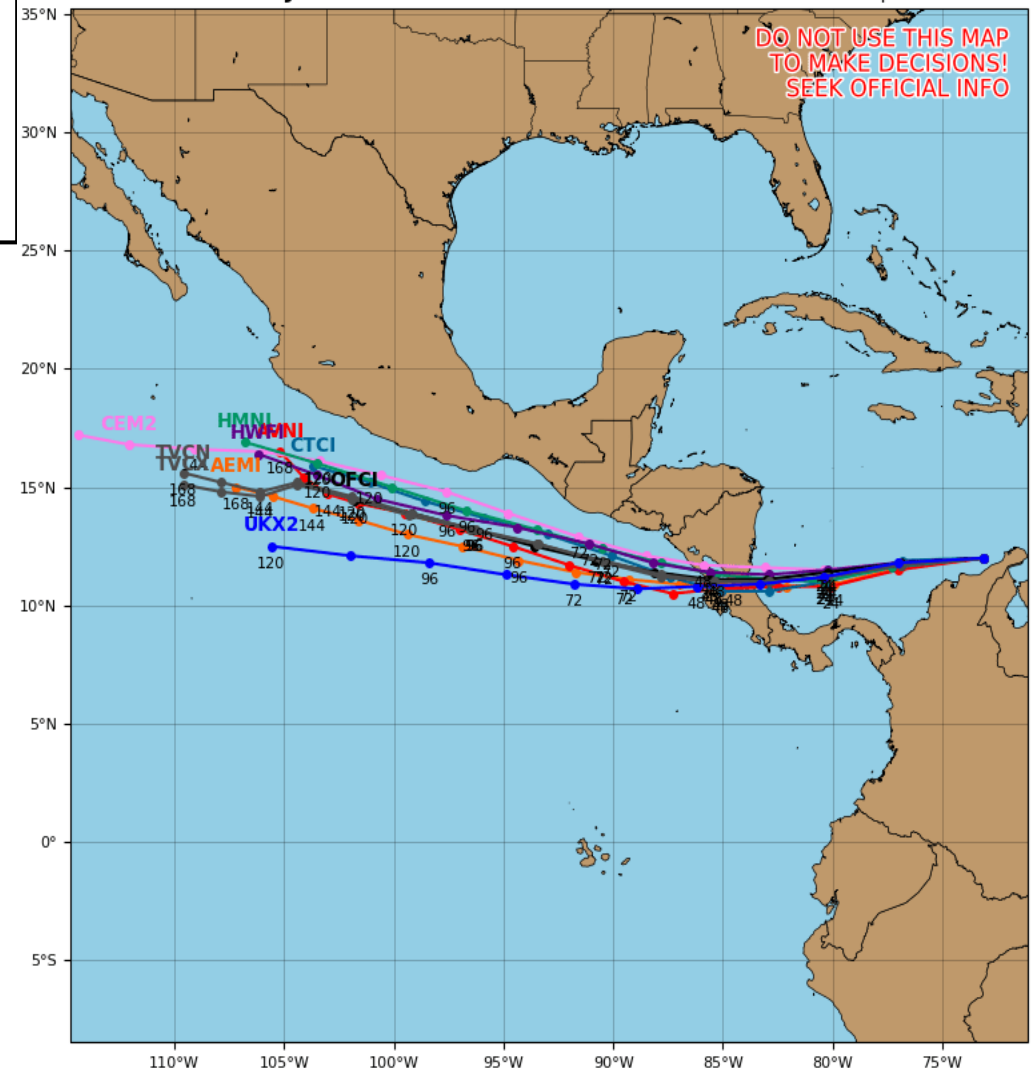
Potential Tropical Cyclone Two

Computer models are in good agreement that PTC #2 will continue a westward motion, making landfall in Central America Friday or Friday night. Because PTC #2 tracked close to portions of northern South America, the system has struggled to organize. Some strengthening is forecast through Friday while PTC #2 approaches Central America, but additional restrengthening is forecast this weekend once the system enters the Pacific. Conditions appear conducive for development and PTC #2 is expected to become Tropical Storm Bonnie while slowing down over the southwestern Caribbean Sea.

Potential Tropical Cyclone TWO Model Track Guidance

Initialized at 12z Jun 30 2022

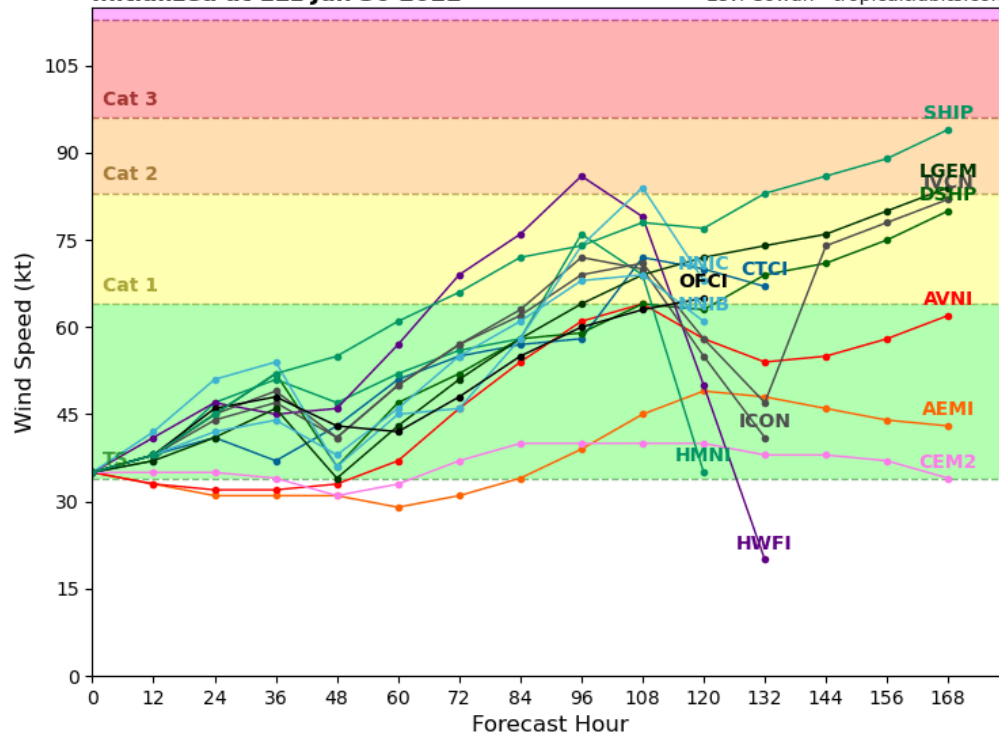
Levi Cowan - tropicaltidbits.com



Potential Tropical Cyclone TWO Model Intensity Guidance

Initialized at 12z Jun 30 2022

Levi Cowan - tropicaltidbits.com





Model Forecasts

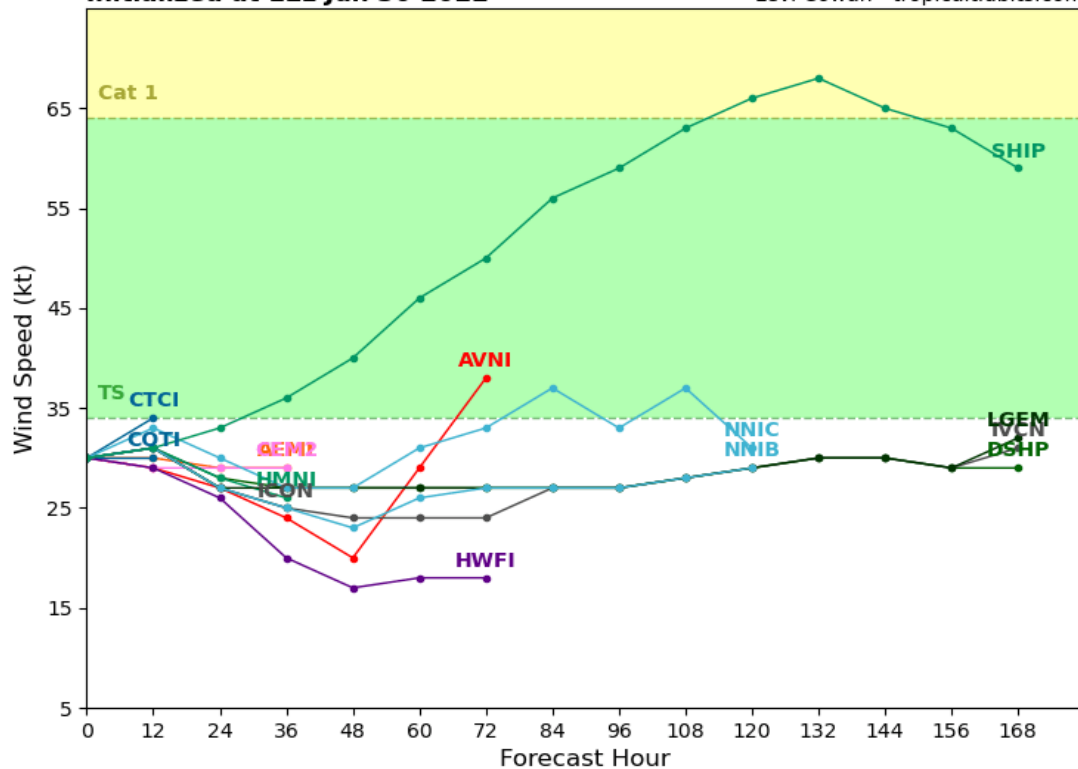
Invest 95L – Western Gulf Low

Computer models are in good agreement that Invest 95L will drift northward and move slowly inland over southeastern Texas later today. The disturbance has not become any better organized since yesterday, however some slow development is still possible just offshore the Texas Coast and Invest 95L could become a short-lived tropical depression before moving inland.

Invest 95L Model Intensity Guidance

Initialized at 12z Jun 30 2022

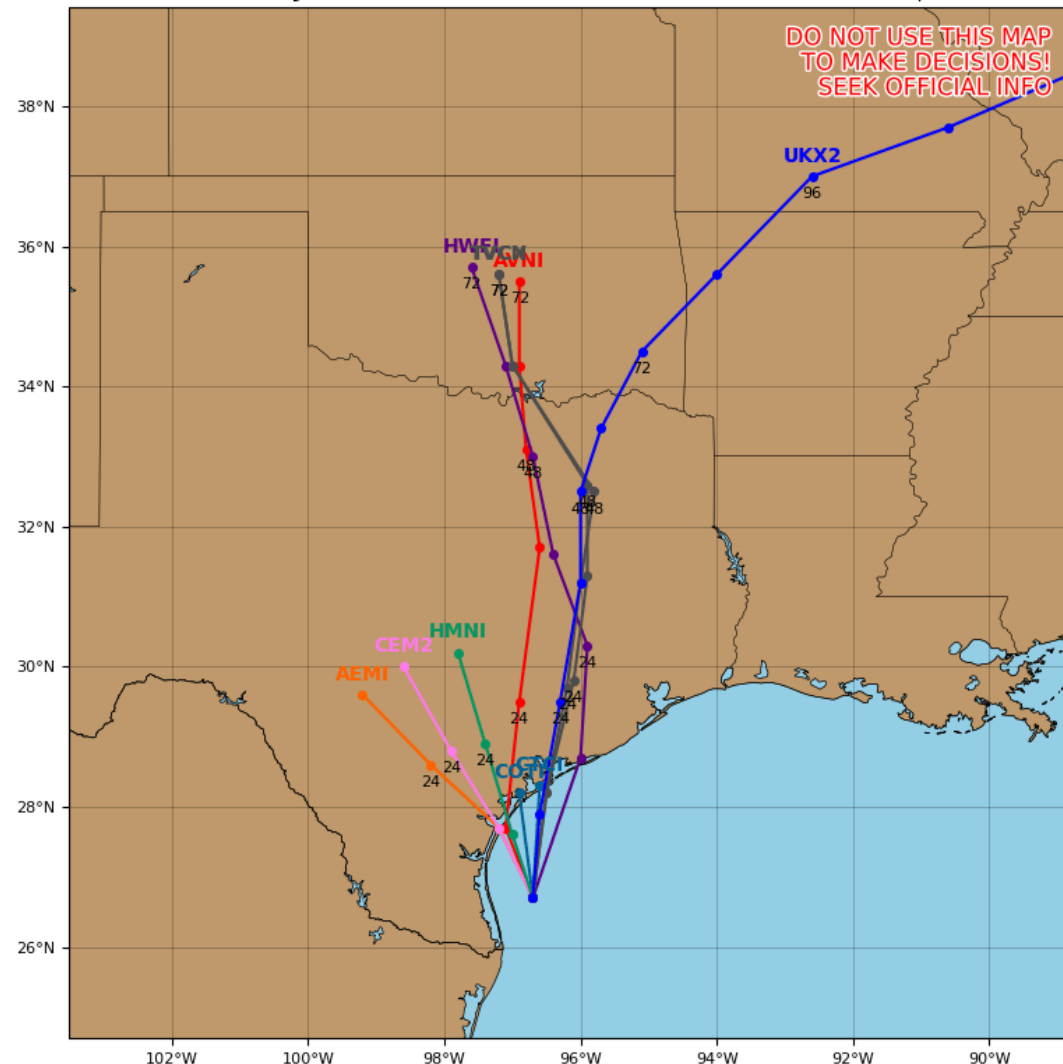
Levi Cowan - tropicaltidbits.com



Invest 95L Model Track Guidance

Initialized at 12z Jun 30 2022

Levi Cowan - tropicaltidbits.com





Overall Summary

Potential Tropical Cyclone Two:

- As of 11:00 AM EDT, PTC #2 was located 660 miles east of Bluefields, Nicaragua and was quickly moving west at 20 mph.
- A continued westward motion with a decrease in forward speed is expected through Saturday.
- PTC #2 will move across the southwestern Caribbean Sea, crossing southern Nicaragua or northern Costa Rica Friday night, and emerge over the Eastern Pacific on Saturday.
- Some strengthening is forecast through Friday while PTC #2 approaches Central America, but additional restrengthening is forecast this weekend once the system enters the Pacific.
- Conditions appear conducive for development and PTC #2 is expected to become Tropical Storm Bonnie while slowing down over the southwestern Caribbean Sea.
- The National Hurricane Center is outlooking an **90% (high) chance of development** over the next 48 hours, and a **90% (high) chance of development** over the next 5 days.

Invest 95L – Western Gulf Low:

- Recent satellite and radar imagery indicate that showers and thunderstorms associated with Invest 95L are showing limited signs of organization.
- The disturbance, near the southern coast of Texas, is forecast to turn northward and move slowly inland over southeastern Texas later today.
- Slow development of Invest 95L is possible while the center remains over water, and it could still become a short-lived tropical depression before it moves inland.
- The National Hurricane Center is outlooking an **40% (medium) chance of development** over the next 48 hours.

Western Atlantic Tropical Wave:

- A tropical wave located several hundred miles east of the Windward Islands is producing disorganized showers and thunderstorms.
- Any development of this system should be slow to occur while the wave moves west-northwestward during the next day or two.
- The wave is forecast to move over the Windward Islands on Friday and then emerge over the eastern Caribbean Sea by the weekend, where further development is unlikely due to unfavorable conditions.
- The National Hurricane Center is outlooking a **10% (low) chance of development** over the next 48 hours, and a **10% (low) chance of development** over the next 5 days.

Florida Outlook:

- *None of these systems pose a direct threat to Florida.*
- The next names on the 2022 Atlantic Hurricane Season list are Bonnie and Colin.

The next briefing packet will be provided Friday afternoon. For the latest information on the tropics, please visit the National Hurricane Center website at www.hurricanes.gov.



TROPICAL UPDATE



Created by:

Caitlyn Gillespie, Assistant State Meteorologist

Caitlyn.Gillespie@em.myflorida.com

State Meteorological Support Unit

Florida Division of Emergency Management

Users wishing to subscribe (approval pending) to this distribution list, register at:

https://public.govdelivery.com/accounts/FLDEM/subscriber/new?topic_id=SERT_Met_Tropics.

Other reports available for subscription are available at:

<https://public.govdelivery.com/accounts/FLDEM/subscriber/new?preferences=true>