



# Florida Division of Emergency Management State Watch Office

Morning Situation Report

Sunday, June 19, 2022



# State Emergency Operations Center Activation Level

Level 3 Monitoring



# SERT On-Call Personnel

Position	Personnel	Phone	Email
Operations Chief	Amy Godsey	(850) 519-8483	<a href="mailto:Amy.Godsey@em.myflorida.com">Amy.Godsey@em.myflorida.com</a>
Watch Officer	Amy Godsey	(850) 519-8483	<a href="mailto:Amy.Godsey@em.myflorida.com">Amy.Godsey@em.myflorida.com</a>
Duty Officer	Phillip Thomas	(850) 519-6961	<a href="mailto:Phillip.Thomas@em.myflorida.com">Phillip.Thomas@em.myflorida.com</a>
Operations Officer- Day	Jazmin Perkins	(850) 815-4001	<a href="mailto:SWP@em.myflorida.com">SWP@em.myflorida.com</a>
Operations Officer- Swing	Jamie-Lynne Raulerson	(850) 815-4001	<a href="mailto:SWP@em.myflorida.com">SWP@em.myflorida.com</a>
Operations Officer- Night	Caleb Pitts	(850) 815-4001	<a href="mailto:SWP@em.myflorida.com">SWP@em.myflorida.com</a>
Meteorologist	Caitlyn Gillespie	(850) 688-2119	<a href="mailto:Caitlyn.Gillespie@em.myflorida.com">Caitlyn.Gillespie@em.myflorida.com</a>
Plans Chief	Kaylynn Perry	(850) 254-5657	<a href="mailto:Plans_Command@em.myflorida.com">Plans_Command@em.myflorida.com</a>
Logistics Chief	Kenneth DeCastro	(850) 567-1943	<a href="mailto:Kenneth.DeCastro@em.myflorida.com">Kenneth.DeCastro@em.myflorida.com</a>
Human Services Director	Pam Hughes	(850) 528-5638	<a href="mailto:Pamela.Hughes@em.myflorida.com">Pamela.Hughes@em.myflorida.com</a>
Emergency Services	Rob Dietrich	(850) 727-3414	<a href="mailto:Robert.Dietrich@em.myflorida.com">Robert.Dietrich@em.myflorida.com</a>
Infrastructure Branch Director	Christina Goetzman	(850) 519-8581	<a href="mailto:Christina.Goetzman@em.myflorida.com">Christina.Goetzman@em.myflorida.com</a>
ESF 8 On-Call	Rey Mejias-Orama	(866) 786-4673	<a href="mailto:DLDOHDutyOfficers@flhealth.gov">DLDOHDutyOfficers@flhealth.gov</a>
Public Information Officer	Alecia Collins	(850) 591-9544	<a href="mailto:Alecia.Collins@em.myflorida.com">Alecia.Collins@em.myflorida.com</a>
DEM Finance and Admin	Jessica Blake	(850) 284-8070	<a href="mailto:Jessica.Blake@em.myflorida.com">Jessica.Blake@em.myflorida.com</a>



# Regional Coordination Team

Team	County Location	Status / Activities
Region 1: Jim Roberts	Leave	Off & See Coverage
Region 2: Willie Bouie	In Region	On Call
Region 3: Pam Bergstrom	In Region	On Call
Region 4: Paul Siddall	In Region	On Call
Region 5: Austin Beeghly	In Region	On Call
Region 6: Jodie Fiske	In Region	On Call
Region 7: Claudia Baker	In Region	On Call



RC 1 coverage provided by RRC 1

## RC Status

Normal Operations

Delayed Response

Out of Service / Unavailable



# Recovery Regional Coordination Team

Team	County Location	Status / Activities
Region 1: Elizabeth Caison	In Region	On Call
Region 2: Justin Lazzara	In Region	Off and Monitoring
Region 3: VACANT		
RRCT Manager	In Region	Off and Monitoring
Region 4: Jeremy O'Dell		
Region 5: Shannon Hagan	In Region	Off and Monitoring
Region 6: Marc Purvis	In Region	Off and Monitoring
Region 7: Dana McGeehan	In Region	Off and Monitoring

RC 3 Covering RRC 3

## RRC Status

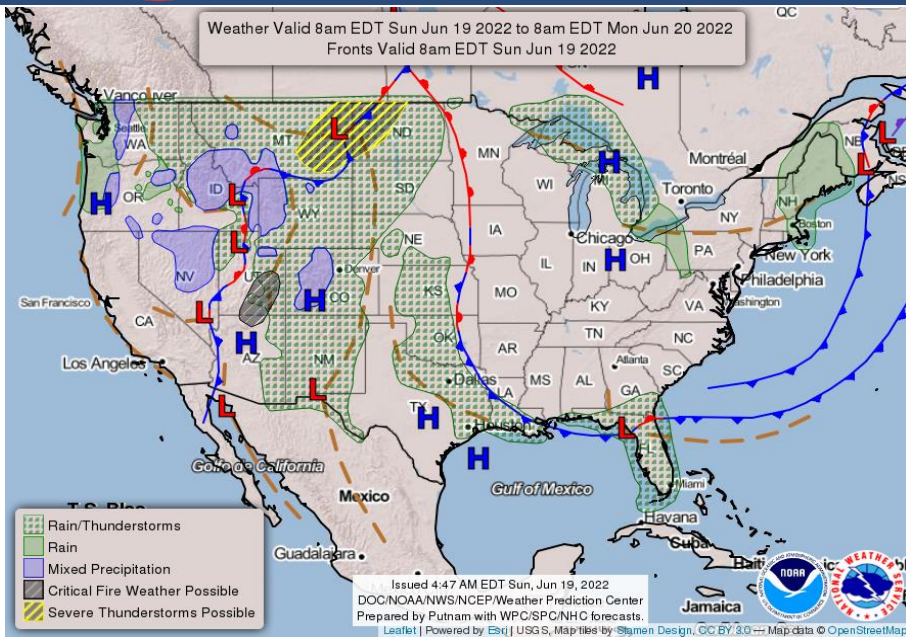
Normal Operations

Delayed Response

Out of Service / Unavailable

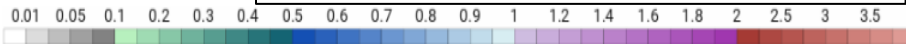


# Meteorology Summary

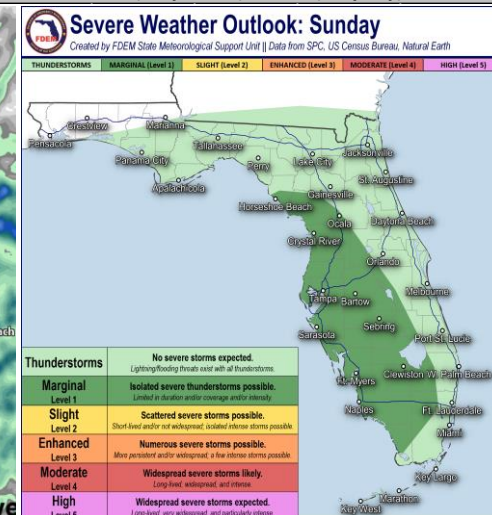
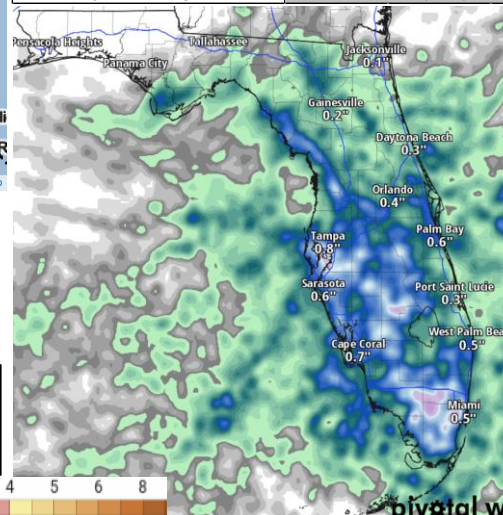


## Today's Weather Map

**24-Hour Forecast Rainfall Totals**  
**Locally 2-4" in Peninsula**



Threat	R1	R2	R3	R4	R5	R6	R7
Lightning	L	M	M	H	H	H	H
Tornado							
Damaging Wind			L	L	L	L	L
Hail							
Flash Flooding				L	L	L	L
Excessive Heat	L	M	M	M	L	M	L
Fog							
Wildfire	L	L	L	L	L		
Rip Currents	M	H	H	L	M	L	M
Space Weather	Very Low						
Lake Okeechobee Status:	Elevation is at 12.95 ft.						
Keetch-Byram Drought Index:	268 (+21) on a scale from 0 (very moist) to 800 (very dry)						







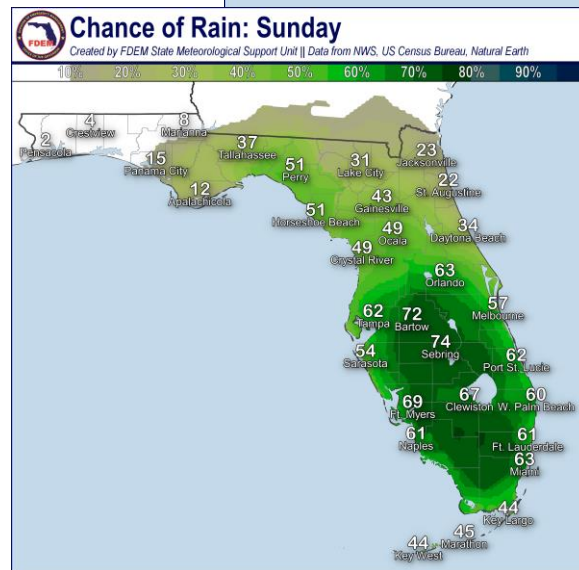
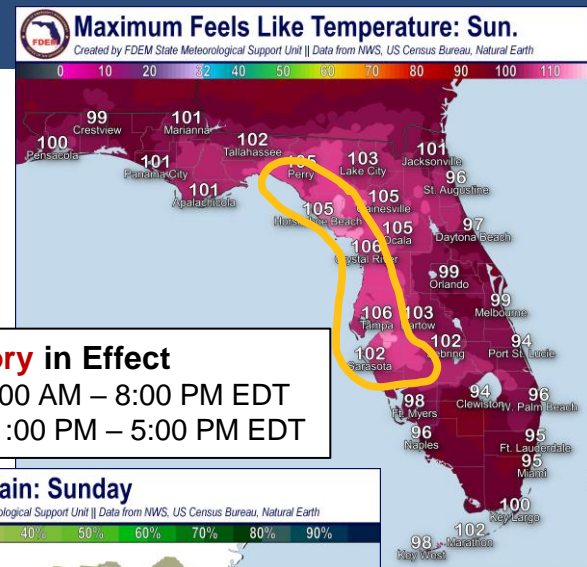
# Meteorology Summary

## Statewide Overview, Next 24 Hours:

As a weakening cold front sags over North Florida today, ample moisture and very hot temperatures will allow for scattered to widespread showers and thunderstorms to develop. The Storm Prediction Center (SPC) is outlooking a **Marginal Risk for Severe Weather (level 1 of 5)** for portions of the Nature Coast and Peninsula, as strong to severe thunderstorms will be capable of producing locally damaging wind gusts (40-60 mph), frequent lightning, small hail, and heavy downpours. Showers and thunderstorms look to develop over the Nature Coast late morning and expand southward across the Peninsula through the daytime hours, with the highest chance of rain residing over the central and southern Peninsula (55-75% chance of rain). Thunderstorm coverage and intensity will maximize during the peak heating hours of the day, courtesy of afternoon sea breeze collisions. Shower and thunderstorm activity will linger after sunset, gradually tapering off late evening.

Over the Panhandle, a typical summertime pattern can be expected with showers and thunderstorms developing along the afternoon sea breeze (30-50% chance of rain). Given the very hot conditions, any thunderstorm that develops will have the potential to be **strong to locally severe**. Locally gusty winds, frequent lightning, and heavy rainfall will be possible. Shower and thunderstorm activity, mainly east of the Apalachicola River, will dissipate after sunset.

Afternoon high temperatures will soar into the lower to middle 90s nearly statewide, with heat indices eclipsing the triple digits at many Florida locations. **Heat Advisories** are in effect for portions of the Big Bend, Nature Coast, and West Coast where temperatures will feel like **105-112 degrees**. Overnight temperatures will remain very mild, with lows remaining in the 70s and 80s.

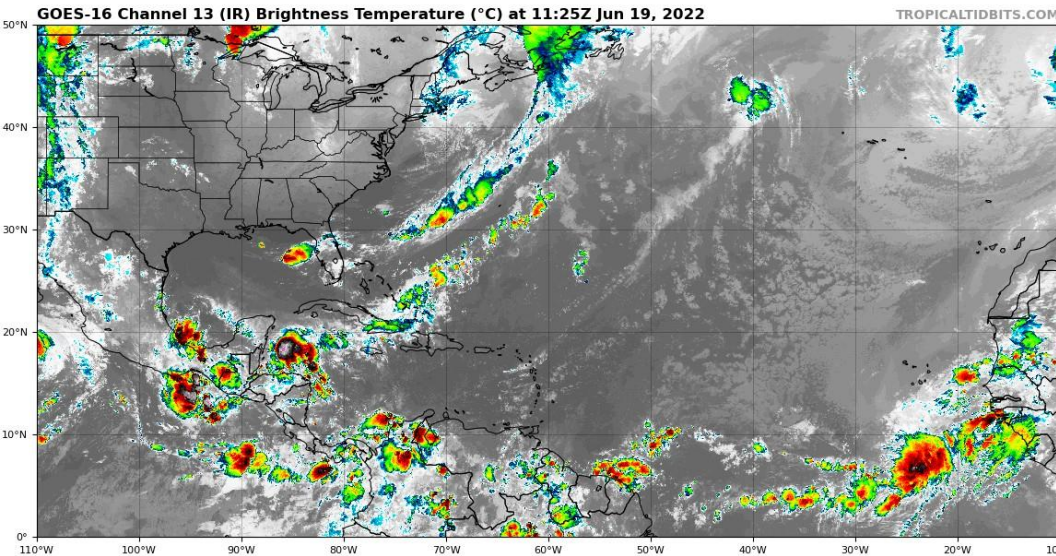




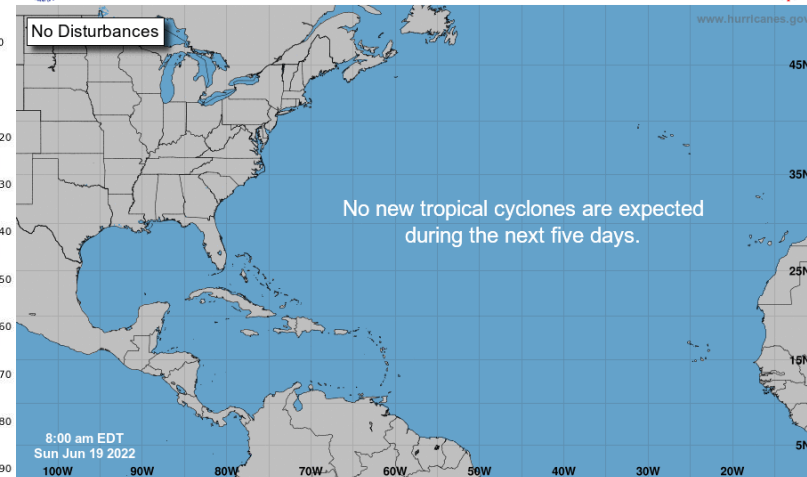
# Tropical Weather

For the latest on the tropics, please visit the National Hurricane Center (NHC) at [www.hurricanes.gov](http://www.hurricanes.gov).

Tropical cyclone development is **not** expected over the next 5 days.



## Five-Day Graphical Tropical Weather Outlook National Hurricane Center Miami, Florida



Current Disturbances and Five-Day Cyclone Formation Chance: < 40% 40-60% > 60%

Tropical or Sub-Tropical Cyclone: Depression Storm Hurricane

Post-Tropical Cyclone or Remnants





# Coastal Hazards & Hydrology

**Rip Currents:** Building onshore flow will yield a **moderate to high risk of rip currents** along most Panhandle and Atlantic Coast beaches today. The locally greater threat will reside along southeasterly-facing beaches in the Panhandle and Northeast Florida beaches. A low risk continues for the Florida West Coast. For the latest Rip Current Outlook, visit [www.weather.gov/beach](http://www.weather.gov/beach).

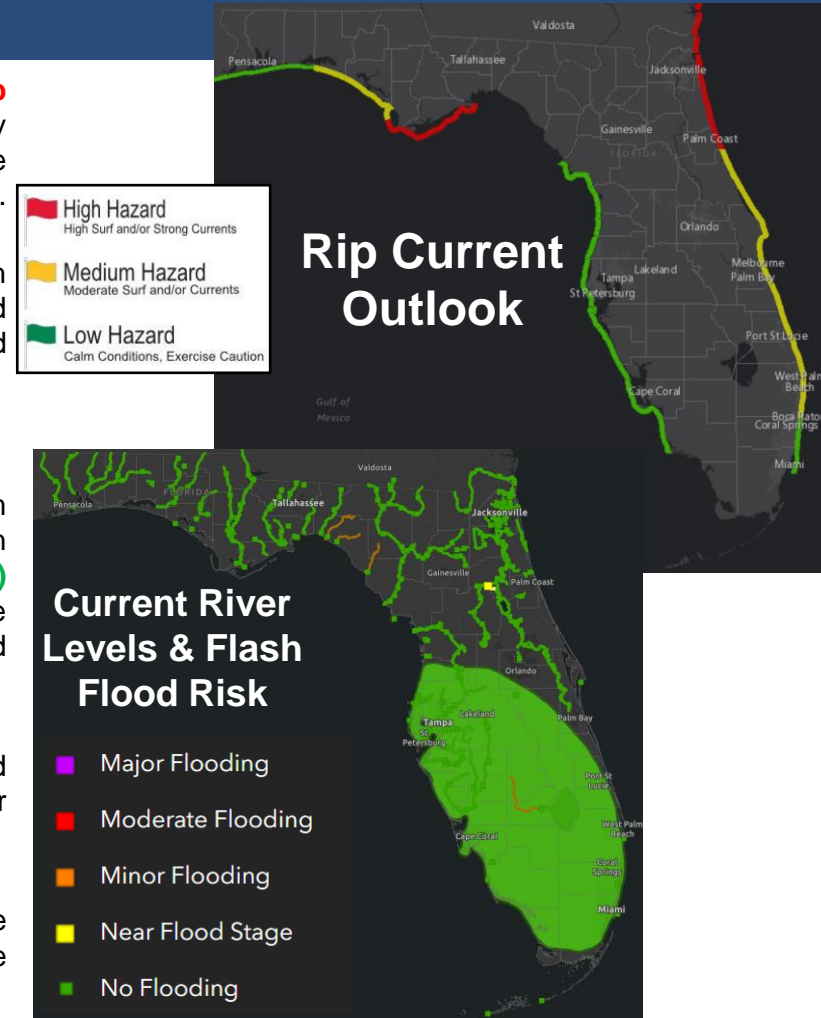
**Marine Hazards:** Wave heights will be 1-3' along all Florida beaches, with increasing swell along the Northeast Florida Coast. **Red Tide** has been observed at very low concentrations offshore of Collier County, but not above background concentrations at any other Florida beaches.

**Coastal Flooding:** Tides are near normal and coastal flooding is not expected.

**Flash Flooding:** Ample moisture in place will allow any shower or thunderstorm that develops to produce very heavy rainfall rates. The Weather Prediction Center (WPC) is outlooking a **Marginal Risk for Flash Flooding (level 1 of 4)** over portions of the Florida Peninsula. Locally heavy rainfall of 2-4" is possible today, especially over locations that experience multiple rounds of shower and thunderstorm activity. Minor urban/street flooding cannot be ruled out.

**Riverine Flooding:** All Florida rivers, creeks, and lakes remain below flood stage. Significant river rises are not forecast. For more details on specific river levels, please visit the [River Forecast Center](http://River Forecast Center).

**Lake Okeechobee's** average elevation is 12.95 feet, which is within the operational band and only 0.24 below normal for this time of year. Small pulse releases continue down the Caloosahatchee.



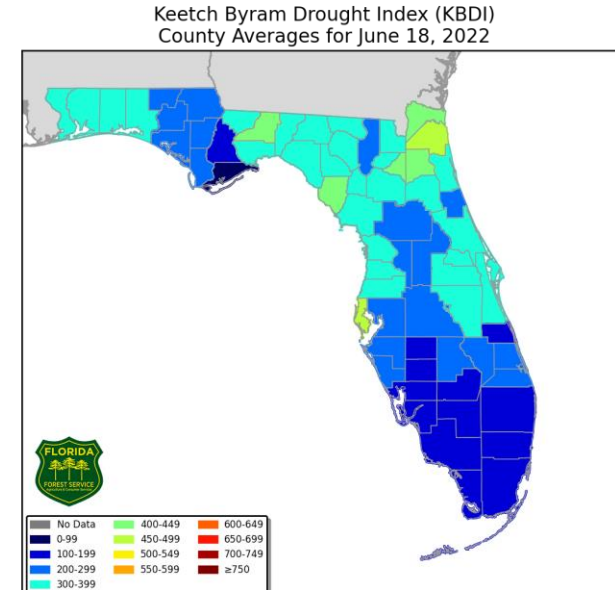
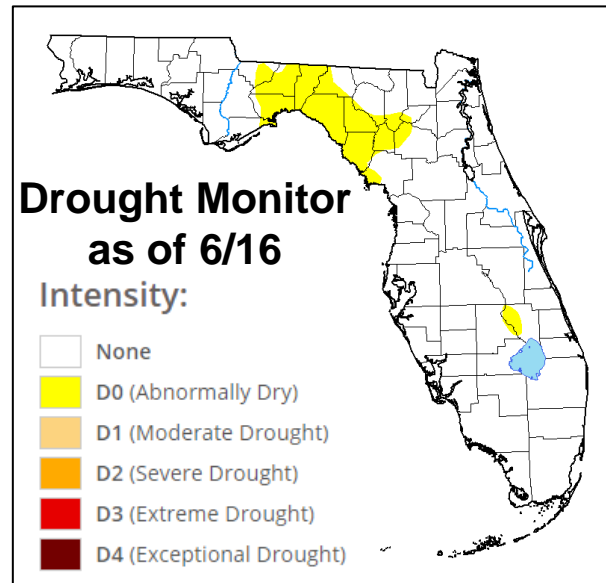
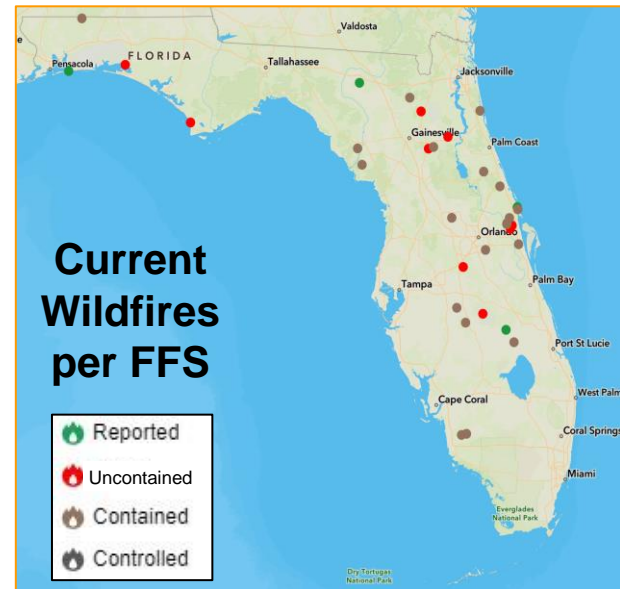


# Drought & Fire Weather

**Fire Weather:** Continued daily rain chances and light winds (5-15 mph, with gusts of 15-20 mph) will keep the wildfire threat low statewide. In the wake of yesterday's cold front, a drier air mass filters in over the western Panhandle, with relative humidity values reaching 35-45%. Relative humidity is expected to remain well above critical thresholds elsewhere. Lightning may ignite new wildfires, and winds may be gusty and erratic near any thunderstorms. According to the [Florida Forest Service](#), there are 33 active wildfires in the state, totaling approximately 643 acres.

**Drought:** Abnormally Dry (*emerging drought*) conditions have expanded along portions of the Big Bend on this week's updated [Drought Monitor](#). Recent rainfall has eliminated moderate drought in the southern Peninsula, with only a small region of Abnormally Dry conditions remaining north of Lake Okeechobee.

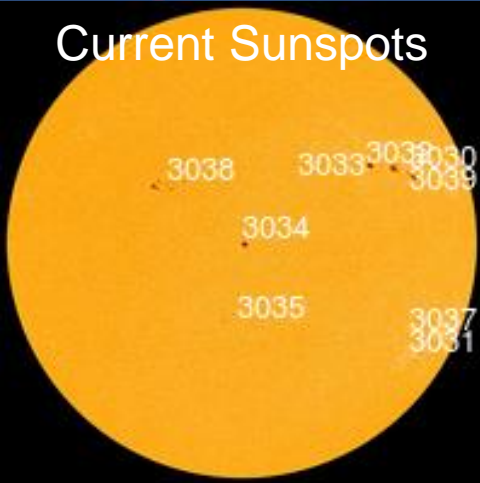
**The Keetch-Byram Drought Index** average for Florida is 268 (+21) on a scale from 0 (very wet) to 800 (very dry). There are **zero** counties with an average KBDI over 500 (drought/increased fire danger), but localized areas of Big Bend, Northeast Florida, and Central Florida counties remain over 500.



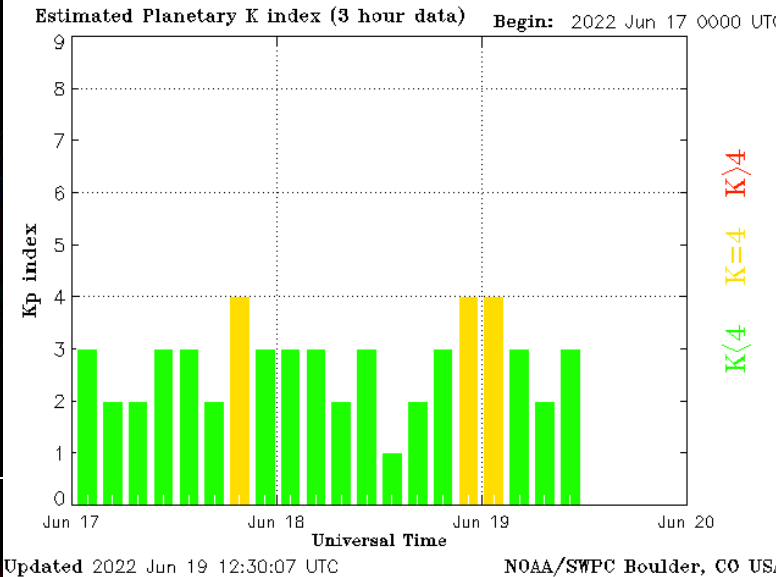


# Space Weather

## Current Sunspots



Coronal Holes on the Earth-facing side of the sun



Solar Flare Risk	Active Watches & Warnings	Past 24 hours
M-class: 25%	Geomagnetic Storm: None	C4 Solar Flare
X-class: 5%	Radiation Storm: None	No Radio Blackout
48 Hour Geomagnetic Forecast		
6/19		6/20
Max Kp= 4 (G0)		Max Kp= 2 (G0)
Chance of minor activity = 1% severe activity = 1%		Chance of minor activity = 1% severe activity = 1%

**Space Weather:** Solar activity is expected to continue at low levels, with a chance for strong solar flares (M-class). High frequency radio blackouts may accompany the strongest solar flares, with a slight chance for R2 (moderate) radio blackouts. Solar winds will remain enhanced today, with a slight chance for minor geomagnetic storms (G1). The space weather threat to Florida remains very low.



# SWO Communications Systems & Contact Information

Equipment	Contact	Status	Comments
Phone:	800-320-0519, 850-815-4001, 850-591-0071 (Backup Cell)	Operational	
Backup Landline:	850-487-3234, 850-487-3228	Operational	
Fax:	850-815-4979	Operational	
Email:	<a href="mailto:SWP@em.myflorida.com">SWP@em.myflorida.com</a>	Operational	
SWO Tracker:	<a href="https://apps.floridadisaster.org/SWO/">https://apps.floridadisaster.org/SWO/</a>	Operational	
SLERS:	DEM Statewide	Operational	
FNARS:	WGY974	Operational	
Federal NAWAS:	State Watch Office	Operational	
EMnet Message:	FL.000- State Watch Office	Operational	
EMnet Voice:	FL SWP- State Watch Office	Operational	
IPAWS:	LP.1 Stations via Emnet	Operational	
FIN:	SOFEOC	Operational	
Satellite Phones:	888-890-5178 or 480-263-8838	Operational	
Website:	<a href="http://www.floridadisaster.org">http://www.floridadisaster.org</a>	Operational	

Users wishing to subscribe (approval pending) to this distribution list, register at:  
[https://public.govdelivery.com/accounts/FLDEM/subscriber/new?topic\\_id=Morning\\_SITREP](https://public.govdelivery.com/accounts/FLDEM/subscriber/new?topic_id=Morning_SITREP)