



Florida Division of Emergency Management State Watch Office

Morning Situation Report
Wednesday, September 11, 2019



State Emergency Operations Center Activation Level

Level 3 Monitoring



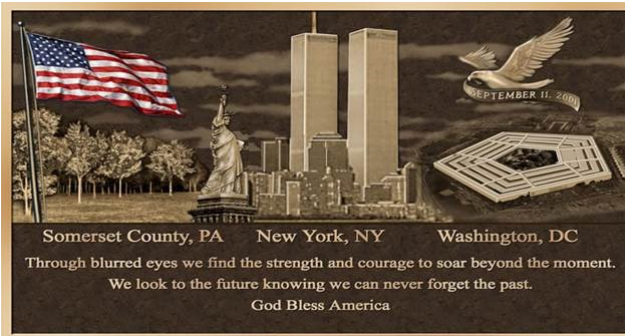
SERT On-Call Personnel

Position	Personnel	Phone	Email
Operations Chief	Ian Guidicelli	(850) 354-3044	Ian.Guidicelli@em.myflorida.com
Watch Officer	Ian Guidicelli	(850) 354-3044	Ian.Guidicelli@em.myflorida.com
Duty Officer	Justin Lazzara	(850) 519-6961	Justin.Lazzara@em.myflorida.com
Operations Officer- Day	Kassidy Grant	(850) 815-4001	SWP@em.myflorida.com
Operations Officer- Swing	Chris Dorans	(850) 815-4001	SWP@em.myflorida.com
Operations Officer- Night	Jim Lawhon	(850) 815-4001	SWP@em.myflorida.com
Meteorologist	Michael Spagnolo	(850) 508-0245	Michael.Spagnolo@em.myflorida.com
Plans Chief	Ryan Lock	(850) 841-9484	Plans_Command@em.myflorida.com
Logistics Chief	Eugene Buerkle	(850) 363-5427	Eugene.Buerkle@em.myflorida.com
Human Services Director	Pam Hughes	(850) 528-5638	Pamela.Hughes@em.myflorida.com
Emergency Services Director	Rob Dietrich	(850) 727-3414	Robert.Dietrich@em.myflorida.com
Infrastructure Branch Director	Danny Kilcollins	(850) 519-8581	Danny.Kilcollins@em.myflorida.com
ESF 8 On-Call	Kenneth DeCastro	(866) 786-4673	DLDOHDutyOfficers@flhealth.gov
Public Information Officer	Jason Mahon	(850) 294-2169	Jason.Mahon@em.myflorida.com
DEM Finance and Admin	Susanne McDaniel	(850) 591-3842	Susanne.McDaniel@em.myflorida.com



Regional Coordination Team

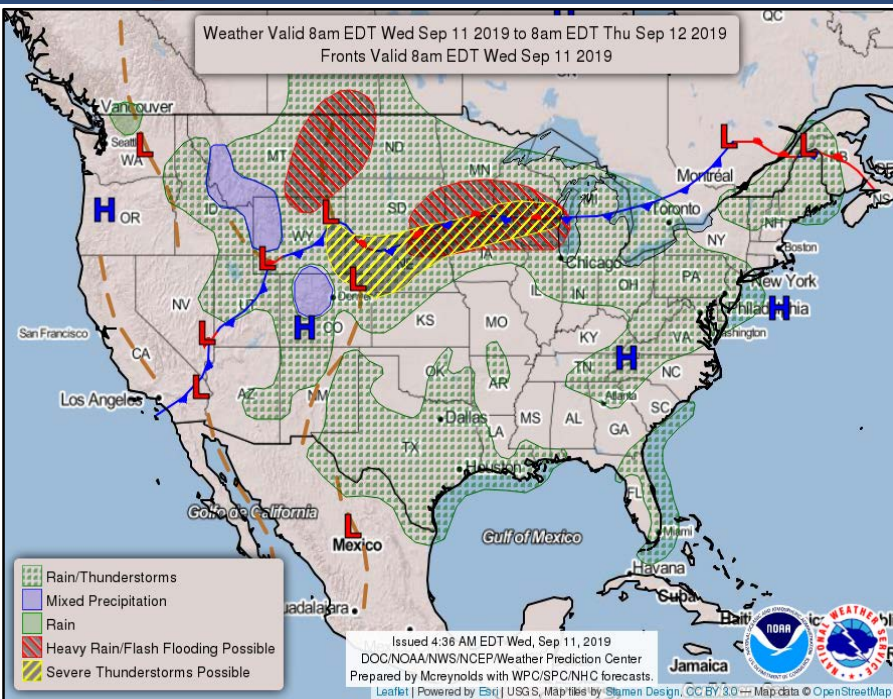
Team	County Location	Status / Activities
RC Manager: Jim Roberts	Leon	Regional Meeting Prep / Division Meeting
Region 1: Jim Roberts		
Region 2: Brian Bradshaw	Leon	Office Admin
Region 3: Gina Lambert	Marion	9/11 Remembrance Event / Dorian Follow-up
Region 4: Paul Siddall	Leon	Fuels Meeting
Region 5: Claudia Baker	Seminole	LMS Meeting
Region 6: Jodie Fiske	Glades / Highlands	Hurricane Dorian AAR Meetings
Region 7: Willie Bouie	Palm Beach	LMS Meeting / Bahamian Relief Meeting



RC Status
Normal Operations
Delayed Response
Out of Service / Unavailable

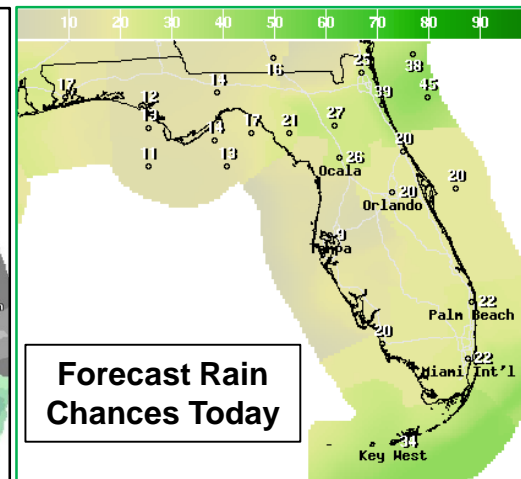
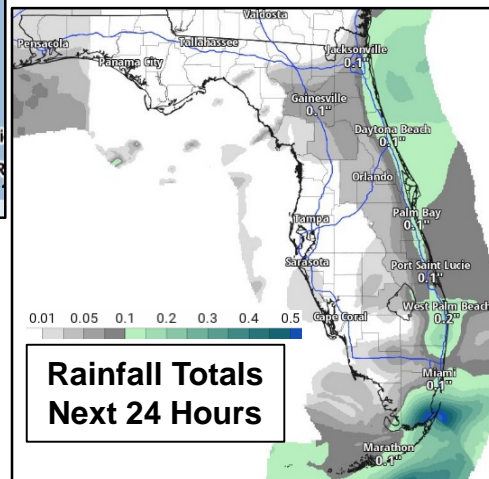


Meteorology Summary



Today's Weather Map

Threat	R1	R2	R3	R4	R5	R6	R7
Lightning			L			L	L
Flooding							
Damaging Wind							
Hail							
Tornado							
Excessive Heat	L	L	L	L	L	L	L
Fire							
Fog		L	L				
Rip Currents	L	M	M	L	M	L	H
Space Weather	Very Low						
Lake Okeechobee Status:	Elevation is at 13.92 ft						
Keetch-Byram Drought Index:	255 (+14) on a scale from 0 (very moist) to 800 (very dry)						





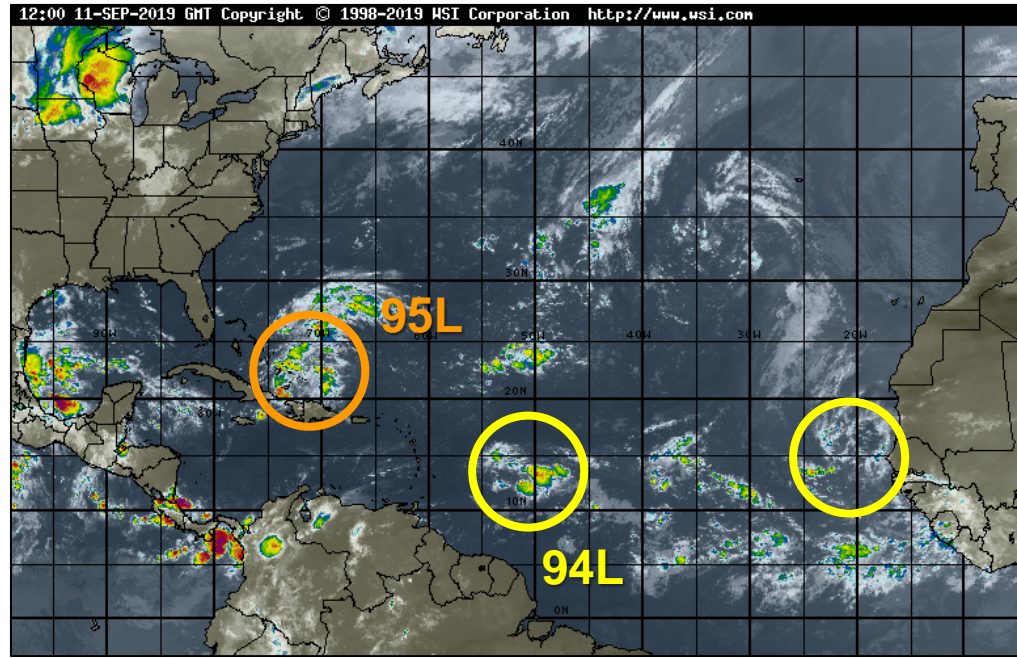
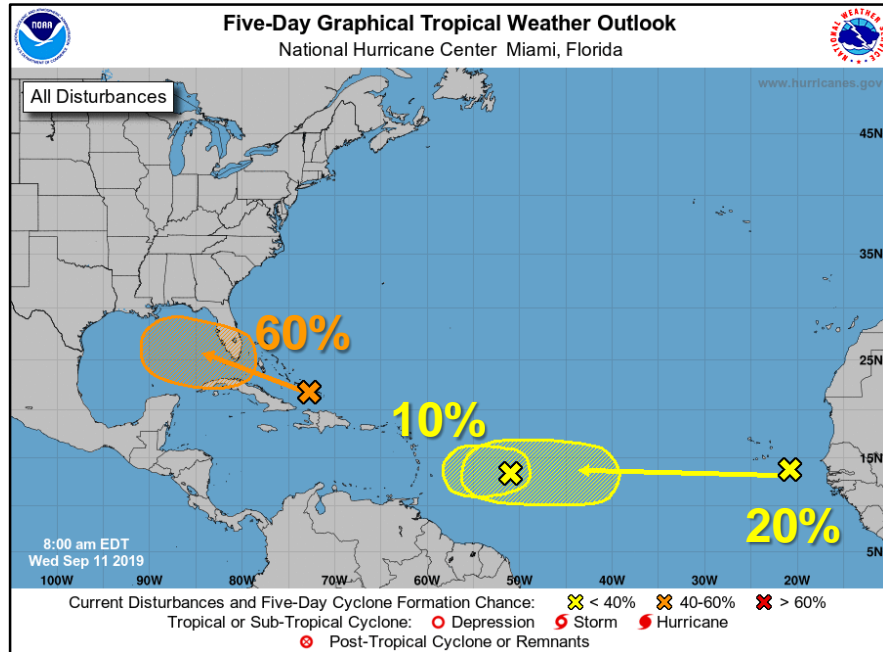
Tropical Weather

Tropics: A tropical wave north of Hispaniola (now Invest 95L) will move into a favorable area for development this weekend in the eastern Gulf of Mexico. The National Hurricane Center gives this system a **20% (low) chance** of formation during the next 48 hours, but a **60% (medium) chance** during the next 5 days. It is becoming more likely a tropical depression develops this weekend. Regardless of development, this system will bring increased rain chances to Florida starting on Friday.

- Invest 94L, located about 650 miles east of the Lesser Antilles, remains disorganized. Little development is expected today before upper-level winds become unfavorable for development. This system has a **10% (low) chance** of formation during the next 48 hours and 5 days.

- A tropical wave off the coast of Africa remains disorganized. Some gradual development is possible as it races west across the tropical Atlantic. The National Hurricane Center gives this system a near 0% (low) chance of formation during the next 48 hours, but a **20% (low) chance** during the next 5 days.

- For more information regarding the tropics please visit www.hurricanes.gov.



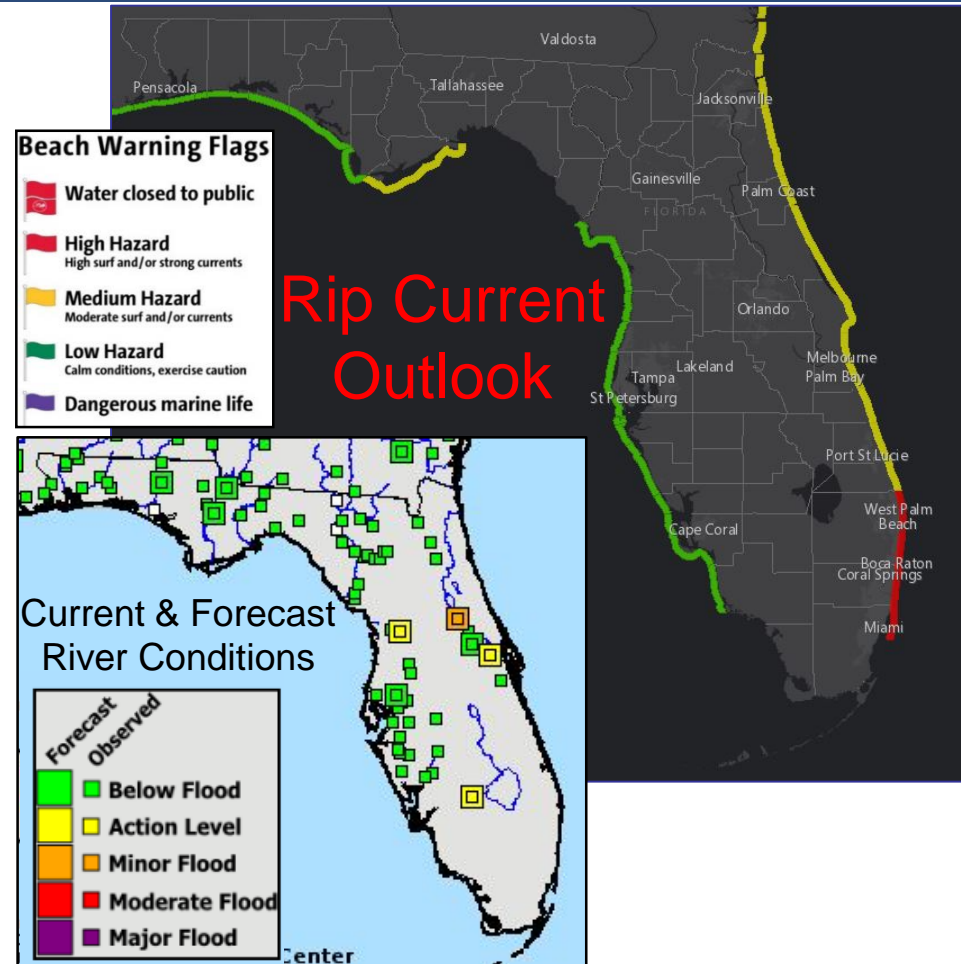


Coastal Hazards & Hydrology

Rip Currents: Continued onshore winds around 15 mph will result in a **high risk of rip currents** for Southeast Florida beaches. A **moderate risk** is expected for all other Atlantic beaches and Franklin County in the Panhandle. All other Gulf Coast beaches will have a low risk. Wave heights will be 3-5' at Atlantic beaches and 1-2' in the Gulf. *Remember, always swim within sight of a lifeguard. Never swim alone. Rip currents can still occur on low risk days!*

Lake Okeechobee average elevation is 13.92 feet, which is 0.55 feet below normal for this time of year. Lake levels will remain steady this week.

Hydrology & Flooding: A **River Flood Warning** continues for the St. Johns River at Astor which is currently in **minor flood stage**. The river will remain there into this weekend. The Ocklawaha River at Rodman Dam is also in minor flood stage. A few other rivers in the Peninsula are in action stage. In contrast, several river gauges are in low water stage in North Florida. For more information on specific rivers, please visit the Southeast River Forecast Center [here](#).





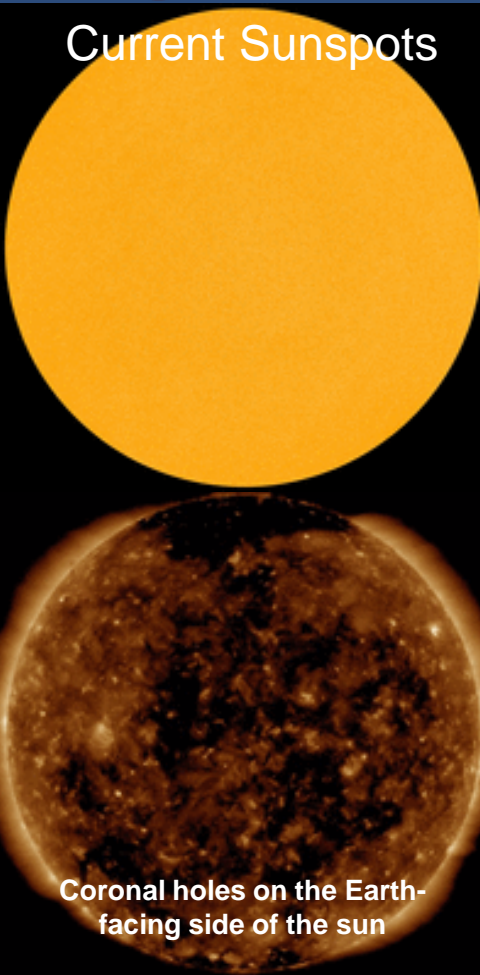
FLORIDA
COUNTY LEVEL

No Data	400-449	600-649
0-99	450-499	650-699
100-199	500-549	700-749
200-299	550-599	≥750
300-399		

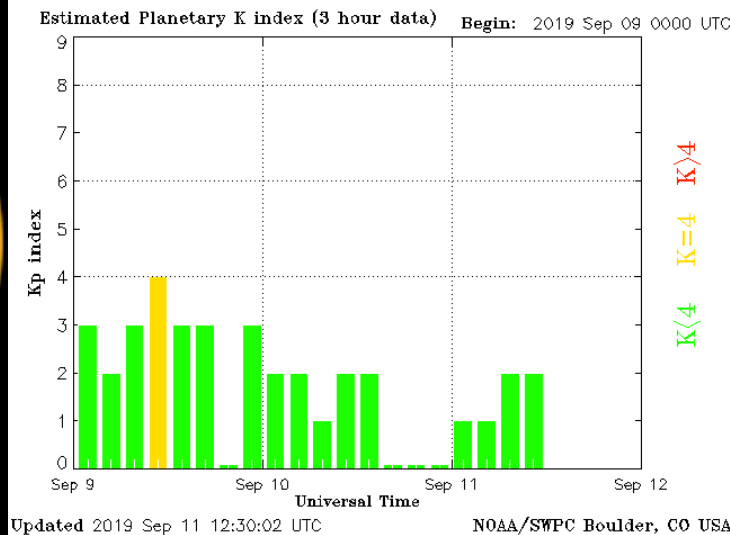


Space Weather

Current Sunspots



Coronal holes on the Earth-facing side of the sun



Solar Flare Risk	Active Watches & Warnings	Past 24 hours
M-class: 1%	Geomagnetic Storm: No	A7 Solar Flare
X-class: 1%	Radiation Storm: No	No Radio Blackouts
48 Hour Geomagnetic Forecast		
9/11		9/12
Max Kp= 1 (G0)		Max Kp= 1 (G0)
Chance of minor activity = 1% severe activity = 1%		Chance of minor activity = 1% severe activity = 1%

Space Weather: The sun remains spotless, and there is no chance of a significant solar flare. Solar winds remain light and geomagnetic storming is not expected for at least the next few days. The space weather threat to Florida remains very low.



SWO Communications Systems & Contact Information

Equipment	Contact	Status	Comments
Phone:	800-320-0519 or 850-815-4001	Operational	
Fax:	850-815-4979	Operational	
Email:	SWP@em.myflorida.com	Operational	
SWO Tracker:	https://apps.floridadisaster.org/SWO/	Operational	
SLERS:	DEM Statewide	Operational	
FNARS:	WGY974	Operational	
NAWAS:	State Watch Office	Operational	
FL NAWAS:	State Watch Office	Operational	
EMnet Message:	FL.000- State Watch Office	Operational	
EMnet Voice:	FL SWP- State Watch Office	Operational	
IPAWS:	LP.1 Stations via Emnet	Operational	
FIN:	SOFEOC	Operational	
Satellite Phones:	888-890-5178 or 480-263-8838	Operational	
Website:	http://www.floridadisaster.org	Operational	
WebEOC:	https://eoc.floridadisaster.org/eoc7/	Operational	

Users wishing to subscribe (approval pending) to this distribution list, register at:
https://public.govdelivery.com/accounts/FLDEM/subscriber/new?topic_id=Morning_SITREP