



# Florida Division of Emergency Management State Watch Office

Morning Situation Report  
Tuesday, September 10, 2019



# State Emergency Operations Center Activation Level

Level 3 Monitoring



# SERT On-Call Personnel

Position	Personnel	Phone	Email
Operations Chief	Ian Guidicelli	(850) 354-3044	<a href="mailto:Ian.Guidicelli@em.myflorida.com">Ian.Guidicelli@em.myflorida.com</a>
Watch Officer	Ian Guidicelli	(850) 354-3044	<a href="mailto:Ian.Guidicelli@em.myflorida.com">Ian.Guidicelli@em.myflorida.com</a>
Duty Officer	Justin Lazzara	(850) 519-6961	<a href="mailto:Justin.Lazzara@em.myflorida.com">Justin.Lazzara@em.myflorida.com</a>
Operations Officer- Day	Kassidy Grant	(850) 815-4001	<a href="mailto:SWP@em.myflorida.com">SWP@em.myflorida.com</a>
Operations Officer- Swing	Amanda Holcomb	(850) 815-4001	<a href="mailto:SWP@em.myflorida.com">SWP@em.myflorida.com</a>
Operations Officer- Night	Phillip Thomas	(850) 815-4001	<a href="mailto:SWP@em.myflorida.com">SWP@em.myflorida.com</a>
Meteorologist	Michael Spagnolo	(850) 508-0245	<a href="mailto:Michael.Spagnolo@em.myflorida.com">Michael.Spagnolo@em.myflorida.com</a>
Plans Chief	Ryan Lock	(850) 841-9484	<a href="mailto:Plans_Command@em.myflorida.com">Plans_Command@em.myflorida.com</a>
Logistics Chief	Eugene Buerkle	(850) 363-5427	<a href="mailto:Eugene.Buerkle@em.myflorida.com">Eugene.Buerkle@em.myflorida.com</a>
Human Services Director	Pam Hughes	(850) 528-5638	<a href="mailto:Pamela.Hughes@em.myflorida.com">Pamela.Hughes@em.myflorida.com</a>
Emergency Services Director	Rob Dietrich	(850) 727-3414	<a href="mailto:Robert.Dietrich@em.myflorida.com">Robert.Dietrich@em.myflorida.com</a>
Infrastructure Branch Director	Danny Kilcollins	(850) 519-8581	<a href="mailto:Danny.Kilcollins@em.myflorida.com">Danny.Kilcollins@em.myflorida.com</a>
ESF 8 On-Call	Kenneth DeCastro	(866) 786-4673	<a href="mailto:DLDOHDutyOfficers@flhealth.gov">DLDOHDutyOfficers@flhealth.gov</a>
Public Information Officer	Jason Mahon	(850) 294-2169	<a href="mailto:Jason.Mahon@em.myflorida.com">Jason.Mahon@em.myflorida.com</a>
DEM Finance and Admin	Susanne McDaniel	(850) 591-3842	<a href="mailto:Susanne.McDaniel@em.myflorida.com">Susanne.McDaniel@em.myflorida.com</a>



# Regional Coordination Team

Team	County Location	Status / Activities
RC Manager: Jim Roberts	Leon	Regional Meeting Prep / Admin
Region 1: Jim Roberts		
Region 2: Brian Bradshaw	Leon	Regional Meeting Prep
Region 3: Gina Lambert	Putnam / Clay	Dorian Follow-up
Region 4: Paul Siddall	Hillsborough	Spill Committee Meeting
Region 5: Claudia Baker	Seminole	Dorian Call / State Operations Call
Region 6: Jodie Fiske	In Region / State	Off & Monitoring
Region 7: Willie Bouie	Palm Beach	Dorian Call / State Operations Call



## RC Status

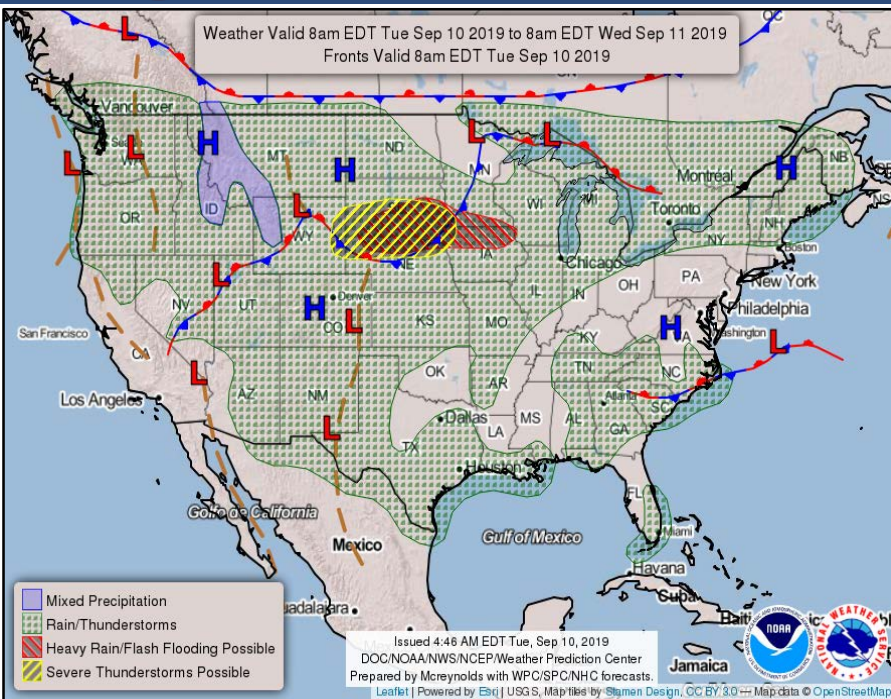
Normal Operations

Delayed Response

Out of Service / Unavailable

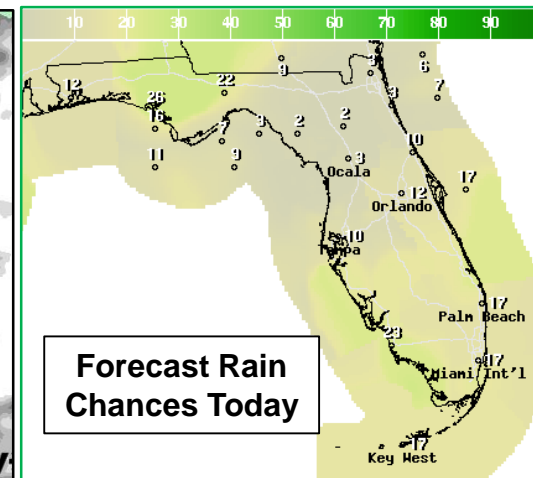


# Meteorology Summary



Today's Weather Map

Threat	R1	R2	R3	R4	R5	R6	R7
Lightning	L	L				L	L
Flooding							
Damaging Wind							
Hail							
Tornado							
Excessive Heat	L	L	L	L	L	L	L
Fire	L						
Fog	L	L	L				
Rip Currents	L	L	M	L	M	L	H
Space Weather	Very Low						
Lake Okeechobee Status:	Elevation is at 13.96 ft						
Keetch-Byram Drought Index:	241 (+20) on a scale from 0 (very moist) to 800 (very dry)						

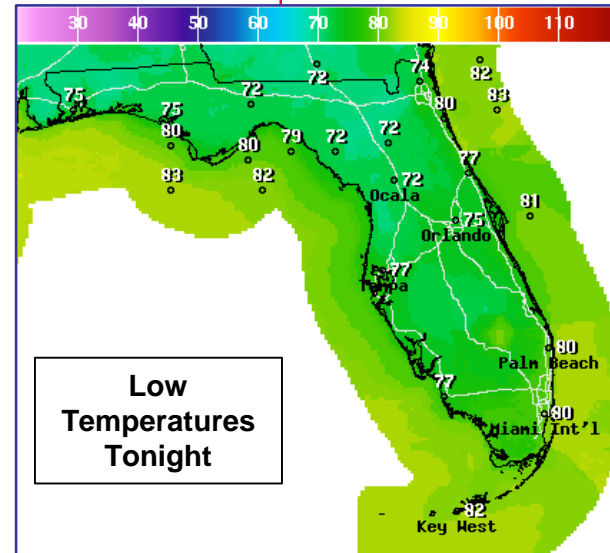




Much of the state will remain dry and hot. Sunny skies this morning will give way to a few clouds this afternoon. Isolated thunderstorms will develop in the Panhandle with a few showers in the Peninsula. Any thunderstorms that develop in the Panhandle could contain gusty winds. Rain chances decrease after sunset, except in the Keys where showers will remain possible overnight.

**High Temperatures This Afternoon**

Map showing high temperatures across Florida for this afternoon. The temperature scale ranges from 30 to 110 degrees Fahrenheit. Major cities labeled include Ocala, Orlando, Tampa, Palm Beach, Miami Int'l, and Key West. A smaller inset map at the bottom left shows temperatures for the Tampa Bay area.

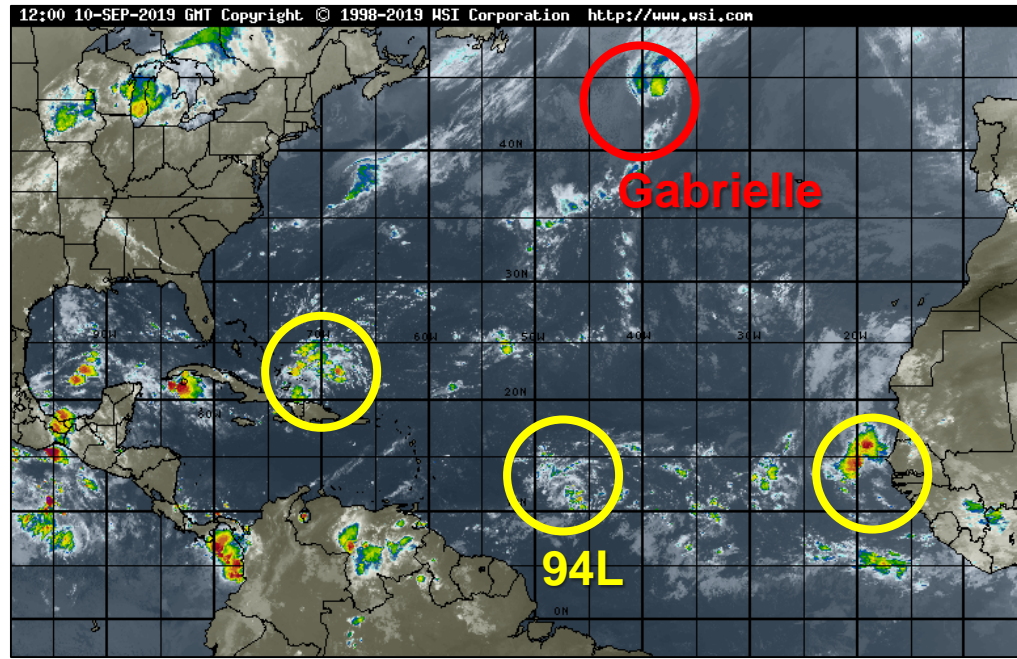
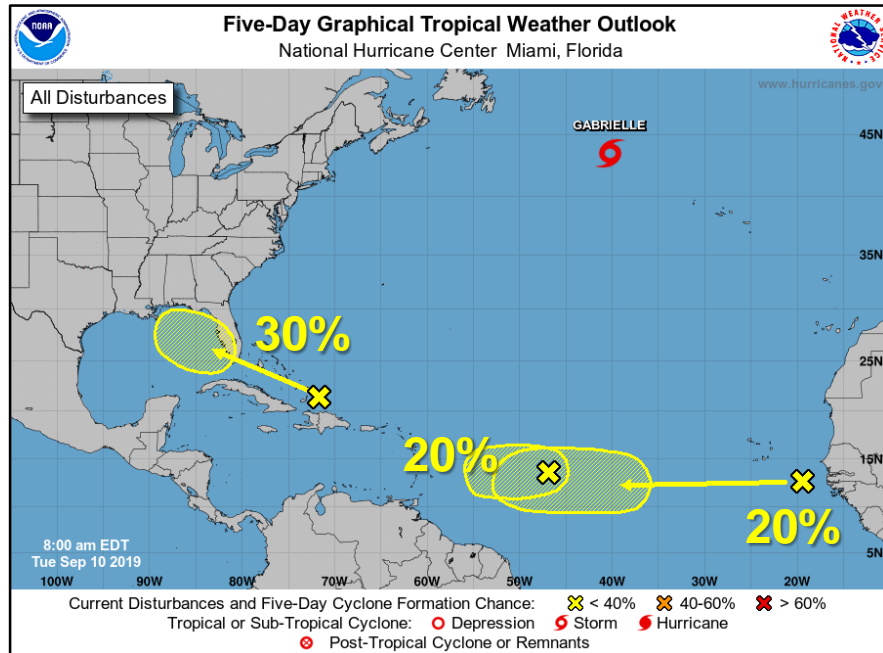






# Tropical Weather

- Tropical Storm Gabrielle is becoming non-tropical as it races towards the colder waters of the North Atlantic.
- A tropical wave north of Hispaniola may move into a favorable area for development this week in the eastern Gulf of Mexico. The National Hurricane Center gives this system a near 0% (low) chance of formation during the next 48 hours, but a **30% (low) chance** during the next 5 days. Regardless of development, this system will bring increased rain chances to Florida this weekend.
- Invest 94L, located about halfway between the Cabo Verde Islands and the Lesser Antilles, remains disorganized. Little development is expected today or tomorrow before upper-level winds become unfavorable for development. This system has a **20% (low) chance** of formation during the next 48 hours.
- A tropical wave moved off of Africa yesterday. Some gradual development is possible as it races west across the tropical Atlantic. The National Hurricane Center gives this system a near 0% (low) chance of formation during the next 48 hours, but a **20% (low) chance** during the next 5 days.
- For more information regarding the tropics please visit [www.hurricanes.gov](http://www.hurricanes.gov).



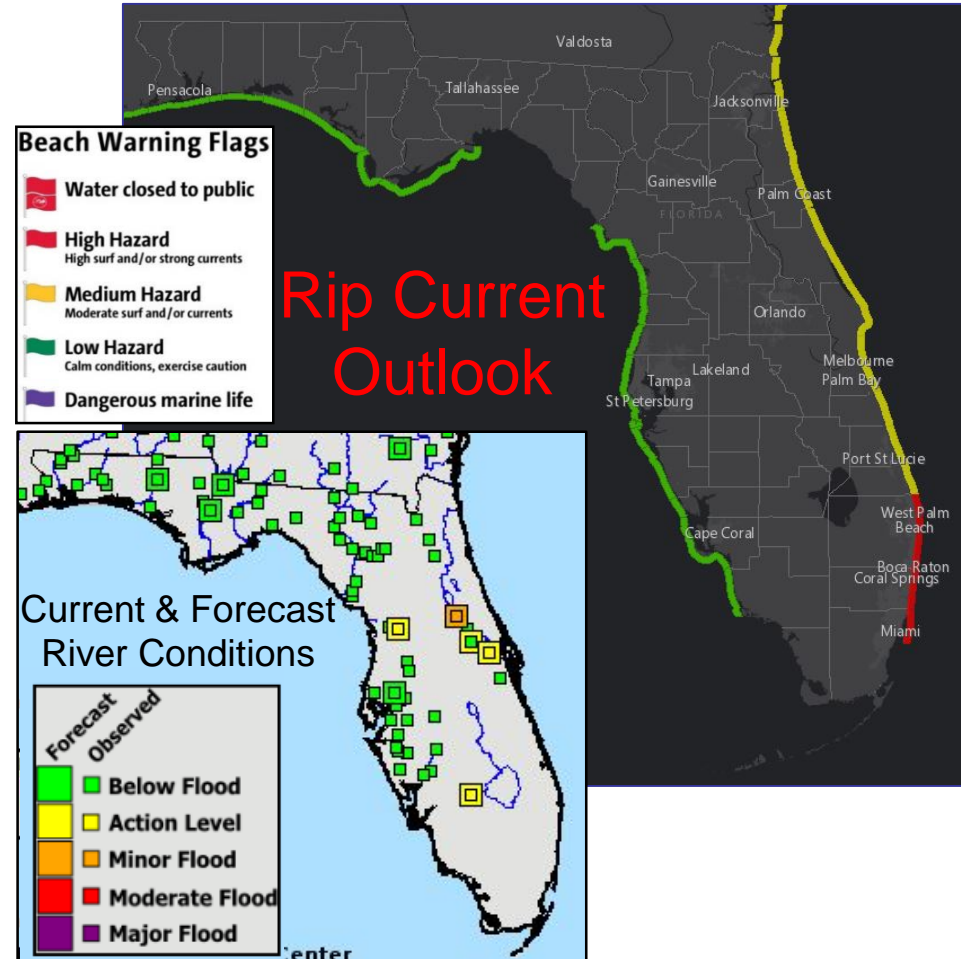


# Coastal Hazards & Hydrology

**Rip Currents:** Continued onshore winds around 15 mph will result in a **high risk of rip currents** for Southeast Florida beaches. A **moderate risk** is expected for all other Atlantic beaches. All Gulf Coast beaches will have a low risk. Wave heights will be 3-4' at Atlantic beaches and 1' or less in the Gulf. *Remember, always swim within sight of a lifeguard. Never swim alone. Rip currents can still occur on low risk days!*

**Lake Okeechobee** average elevation is 13.96 feet, which is 0.48 feet below normal for this time of year. Lake levels will remain steady this week.

**Hydrology & Flooding:** A **River Flood Warning** continues for the St. Johns River at Astor which is currently in **minor flood stage**. The river will remain there for much of this week. The Ocklawaha River at Rodman Dam is also in minor flood stage. A few other rivers in the Peninsula are in action stage. In contrast, several river gauges are in low water stage in North Florida. For more information on specific rivers, please visit the Southeast River Forecast Center [here](#).







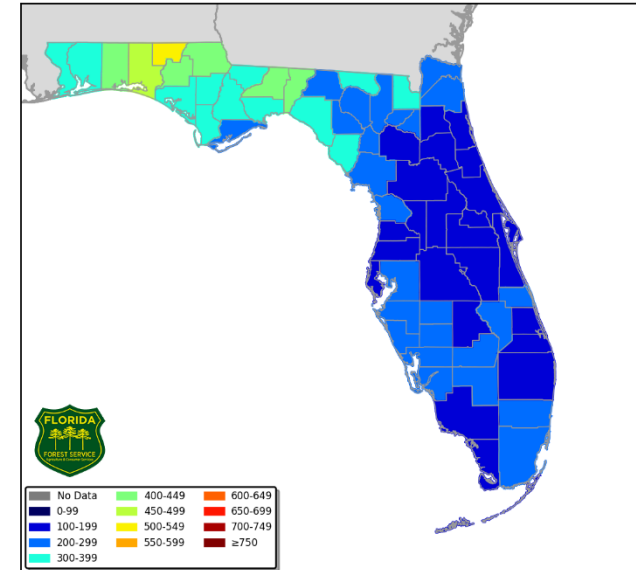
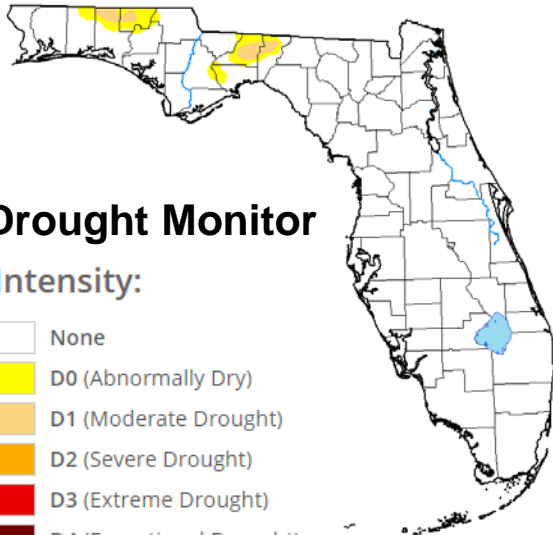
# Drought & Fire Weather

**Fire Weather:** Much of the Peninsula has seen abundant rainfall, and the wildfire threat in those areas remains minimal. However, above normal temperatures and ongoing moderate drought across inland parts of the Panhandle will continue a **low wildfire threat**. Downed trees from Hurricane Michael continue to pose a hazardous fuel source.

There are currently 10 [active wildfires](#) across the state burning a total of 8.9 acres. All but one of these fires are 100% contained. A [County Burn Ban](#) is in effect for Duval, Orange, Hillsborough, Pinellas, and Sarasota (prohibited year-round).

**The Keetch-Byram Drought Index** average for Florida is 241 **(+20)** on a scale from 0 (very moist) to 800 (very dry). There is currently **1** Florida county with an average KBDI at or above 500 (Holmes).

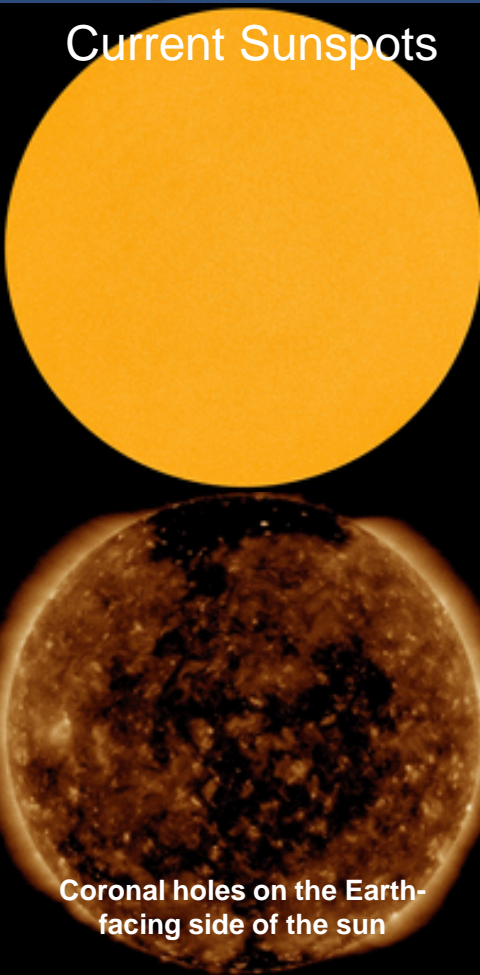
Keetch Byram Drought Index (KBDI)  
County Averages for September 09, 2019



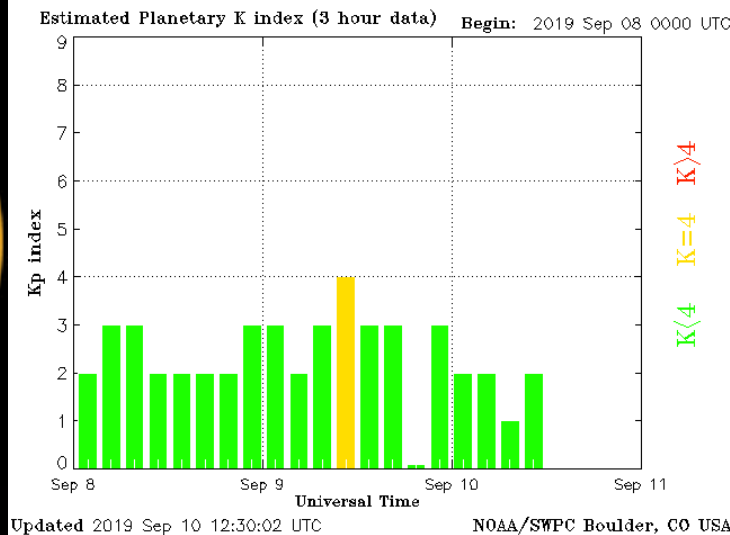


# Space Weather

## Current Sunspots



Coronal holes on the Earth-facing side of the sun



Solar Flare Risk	Active Watches & Warnings	Past 24 hours
M-class: 1%	Geomagnetic Storm: No	A7 Solar Flare
X-class: 1%	Radiation Storm: No	No Radio Blackouts
48 Hour Geomagnetic Forecast		
9/10		9/11
Max Kp= 2 (G0)		Max Kp= 1 (G0)
Chance of minor activity = 1% severe activity = 1%		Chance of minor activity = 1% severe activity = 1%

**Space Weather:** The sun remains spotless, and there is no chance of a significant solar flare. Solar winds remain light and geomagnetic storming is not expected for at least the next few days. The space weather threat to Florida remains very low.



# SWO Communications Systems & Contact Information

Equipment	Contact	Status	Comments
Phone:	800-320-0519 or 850-815-4001	Operational	
Fax:	850-815-4979	Operational	
Email:	<a href="mailto:SWP@em.myflorida.com">SWP@em.myflorida.com</a>	Operational	
SWO Tracker:	<a href="https://apps.floridadisaster.org/SWO/">https://apps.floridadisaster.org/SWO/</a>	Operational	
SLERS:	DEM Statewide	Operational	
FNARS:	WGY974	Operational	
NAWAS:	State Watch Office	Operational	
FL NAWAS:	State Watch Office	Operational	
EMnet Message:	FL.000- State Watch Office	Operational	
EMnet Voice:	FL SWP- State Watch Office	Operational	
IPAWS:	LP.1 Stations via Emnet	Operational	
FIN:	SOFEOC	Operational	
Satellite Phones:	888-890-5178 or 480-263-8838	Operational	
Website:	<a href="http://www.floridadisaster.org">http://www.floridadisaster.org</a>	Operational	
WebEOC:	<a href="https://eoc.floridadisaster.org/eoc7/">https://eoc.floridadisaster.org/eoc7/</a>	Operational	

Users wishing to subscribe (approval pending) to this distribution list, register at:  
[https://public.govdelivery.com/accounts/FLDEM/subscriber/new?topic\\_id=Morning\\_SITREP](https://public.govdelivery.com/accounts/FLDEM/subscriber/new?topic_id=Morning_SITREP)