



Florida Division of Emergency Management State Watch Office

Morning Situation Report

Friday, June 14, 2019



State Emergency Operations Center Activation Level

Level 3 Monitoring



SERT On-Call Personnel

Position	Personnel	Phone	Email
Operations Chief	Ashley Davis	(850) 544-8373	Ashley.Davis@em.myflorida.com
Watch Officer	Sam Walters	(850) 519-8638	Sam.Walters@em.myflorida.com
Duty Officer	Taylor Cheney	(850) 545-4047	Taylor.Cheney@em.myflorida.com
Operations Officer- Day	Chris Dorans	(850) 815-4001	SWP@em.myflorida.com
Operations Officer- Swing	Amanda Holcomb	(850) 815-4001	SWP@em.myflorida.com
Operations Officer- Night	Jim Lawhon	(850) 815-4001	SWP@em.myflorida.com
Meteorologist	Cameron Young	(850) 688-2119	Cameron.Young@em.myflorida.com
Plans Chief	Ryan Lock	(850) 841-9484	Plans_Command@em.myflorida.com
Logistics Chief	Eugene Buerkle	(850) 363-5427	Eugene.Buerkle@em.myflorida.com
Human Services Director	Pam Hughes	(850) 528-5638	Pamela.Hughes@em.myflorida.com
Emergency Services Director	Rob Dietrich	(850) 727-3414	Robert.Dietrich@em.myflorida.com
Infrastructure Branch Director	Danny Kilcollins	(850) 519-8581	Danny.Kilcollins@em.myflorida.com
ESF 8 On-Call	Kenneth DeCastro	(866) 786-4673	DLDOHDutyOfficers@flhealth.gov
Public Information Officer	Jason Mahon	(850) 294-2169	Jason.Mahon@em.myflorida.com
DEM Finance and Admin	Jessica Blake	(850) 284-8070	Jessica.Blake@em.myflorida.com



Regional Coordination Team

Team	County Location	Status / Activities
RC Manager: Jim Roberts	Leon	Office Admin / Vehicle Inventory
Region 1: Wanda Stafford	Walton	HERicane Florida - Girls Camp
Region 2: Brian Bradshaw	Leon	Office Admin
Region 3: Gina Lambert	Lake	Office Admin / Inventory (AM) / Off & Monitoring (PM)
Region 4: Paul Siddall	Oklahoma	EMAC Deployment
Region 5: Claudia Baker	Brevard	County EM Partners Meeting
Region 6: Jodie Fiske	In Region / State	Off & Monitoring
Region 7: Willie Bouie	Palm Beach	Office Admin



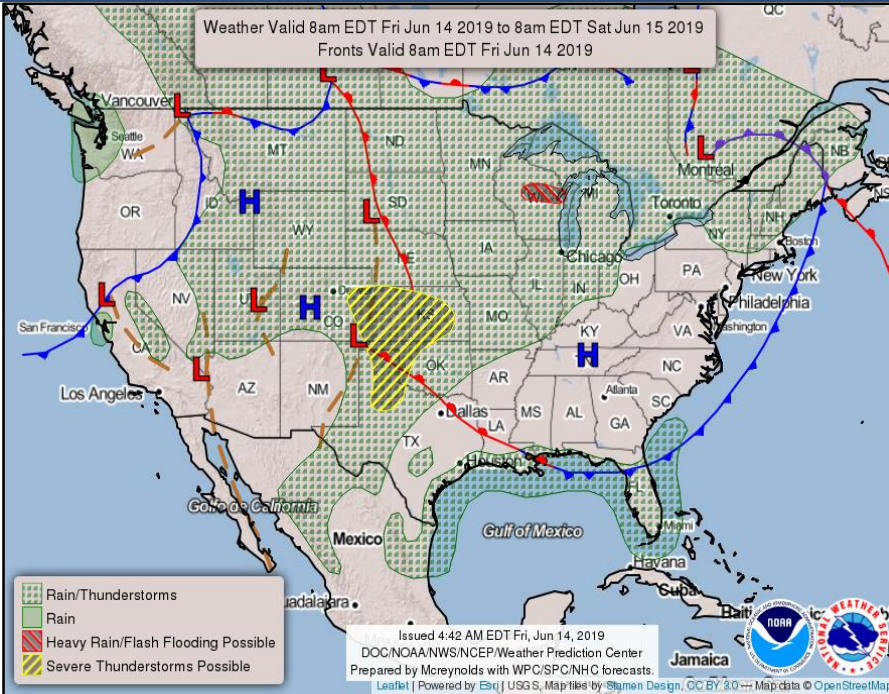
Regional Coverage:

- R3 covering Citrus, Hernando, and Sumter
- R6 covering Hardee, Hillsborough, Pasco, Pinellas, and Polk

RC Status
Normal Operations
Delayed Response
Out of Service / Unavailable

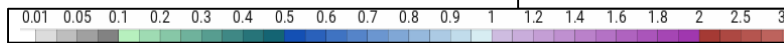
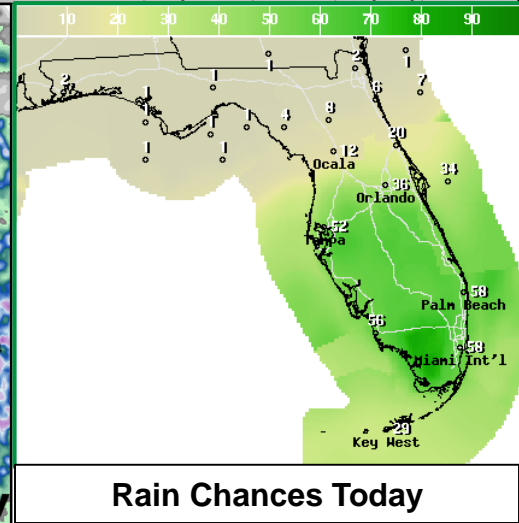
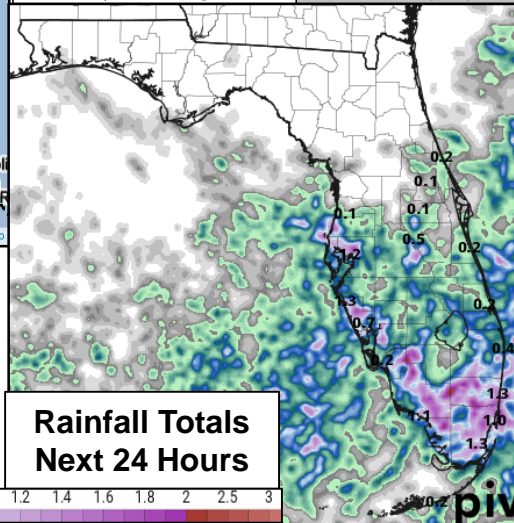


Meteorology Summary



Today's Weather Map

Threat	R1	R2	R3	R4	R5	R6	R7
Lightning				M	M	M	M
Flooding						L	L
Damaging Wind							
Hail							
Tornado							
Excessive Heat						L	L
Fire	M	M	M	M	M	M	M
Fog							
Rip Currents	M	L	L	L	L	L	L
Space Weather	Very Low						
Lake Okeechobee Status:	Elevation is at 11.08 ft						
Keetch-Byram Drought Index:	201 (-33) on a scale from 0 (very moist) to 800 (very dry)						





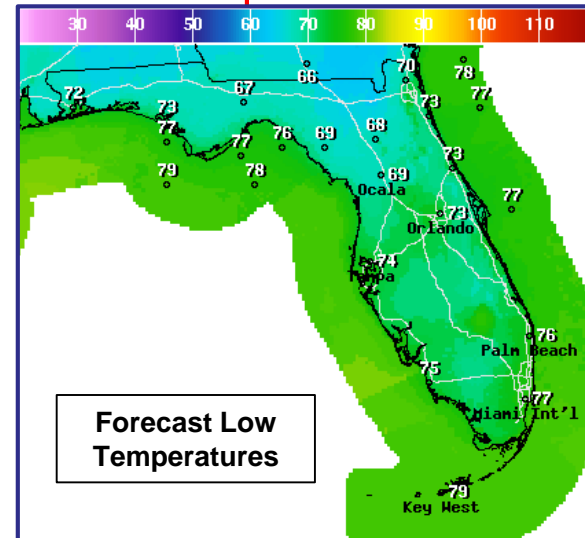
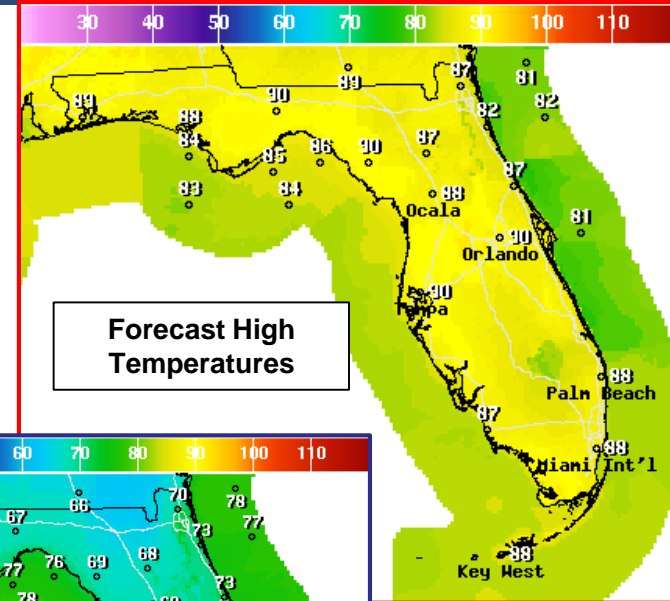
Meteorology Summary

Statewide Overview, Next 24 Hours:

A cold front situated across the northern part of the Peninsula will begin to travel southward, making it to Central Florida by this afternoon. Northeast Florida may see some showers this morning, but rain chances will quickly decrease into the afternoon. As this front moves below the Big Bend, Central and South Florida can expect to continue seeing showers, scattered thunderstorms, and muggy conditions. Showers will begin late morning and persist throughout the day and into this evening. Some storms could become strong to briefly severe, producing frequent lightning, gusty winds, and heavy rainfall. Flash flooding cannot be ruled out, especially in urban, low-lying areas.

North of the cold front, the Panhandle can expect a relief from the rain and humidity with mostly sunny skies comfortably dry air. Showers and thunderstorms are not expected in these regions today.

Temperatures will be near or below average for this time of year with highs in the middle to upper 80s for most. Heat index values of 100-105 are possible in South Florida today. Otherwise, the rest of the state will see heat indices in the mid 80s to low 90s. The drier air will also allow for cooler overnight lows across North Florida—falling into the middle 60s to lower 70s overnight. Central and South Florida will remain warm and humid with lows in the lower to middle 70s. The Keys will only settle in the lower 80s.



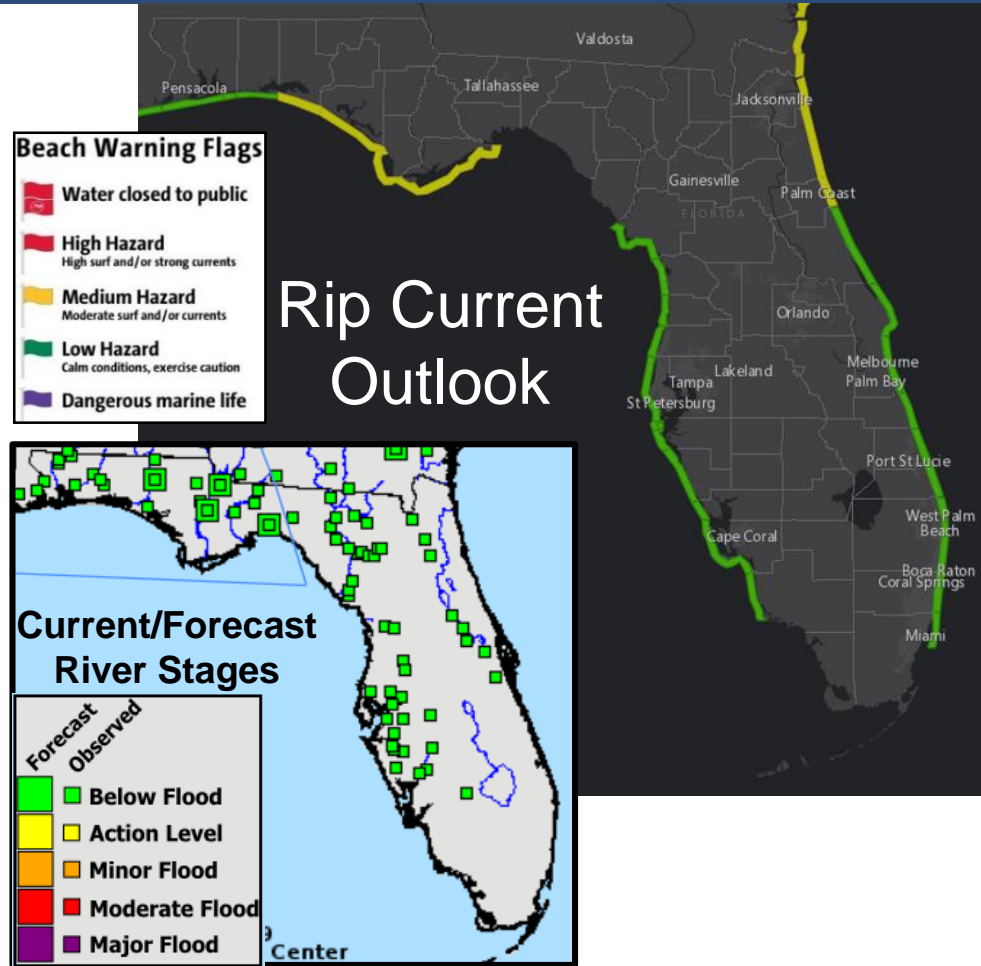


Coastal Hazards & Hydrology

Rip Currents: Breezy northeast winds will result in a **moderate rip current risk** for Northeast Florida. Additionally, winds becoming onshore this afternoon in parts of the Panhandle may result in a **moderate rip current risk**. *Remember, always swim within sight of a lifeguard. Never swim alone. Rip currents can still occur on low risk days!*

Lake Okeechobee average elevation is 11.08 feet, which is 2.10 feet below normal for this time of year and 0.33 feet above the water shortage management level. Daily rain chances and reduced lake discharges will result in a gradually increasing lake level.

Hydrology & Flooding: All Florida rivers are below flood stage, and no river flooding is forecast. Widespread rainfall amounts of 0.5 to 1.5" are expected today across Central and South Florida with some localized totals of 2-3" possible. This could result in some nuisance flooding of urban, low-lying, or poor drainage areas. For more information on specific rivers, please visit the Southeast River Forecast Center [here](#).

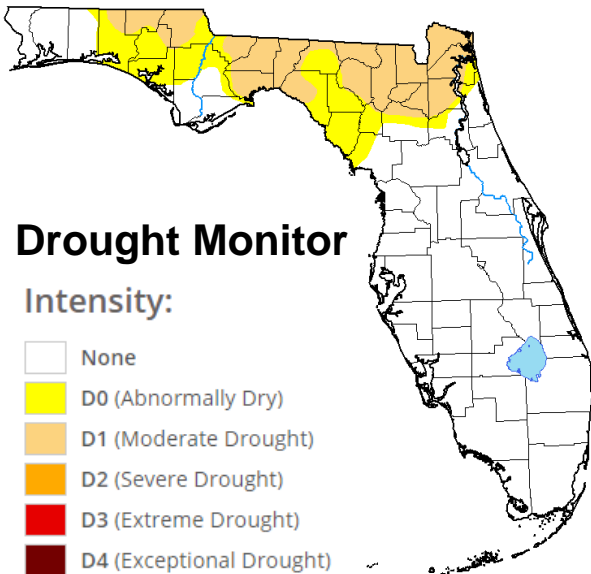




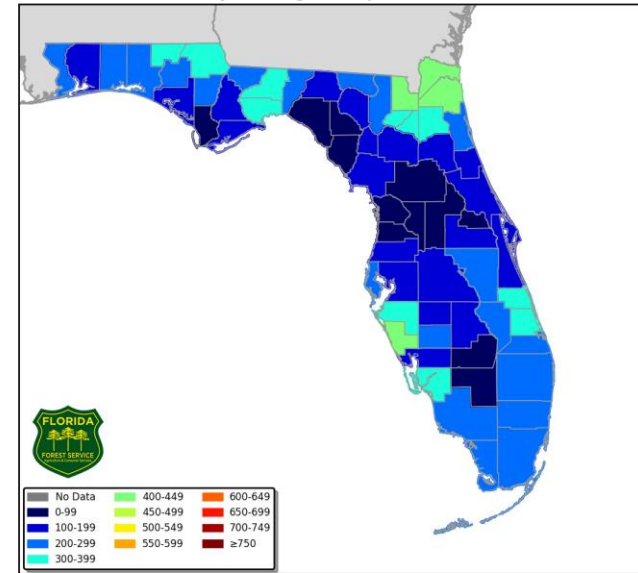
Drought & Fire Weather

Fire Weather: With widespread rainfall across much of the state over the last several days and more rain in the forecast, the wildfire threat will be **low to moderate**. Fuels and soils are now generally wet, but the threat of lightning igniting new fires continues in the Peninsula. Relative humidity in North Florida will be between 32 and 38% in spots. Winds will be out of the northeast at 5-10 mph in Panhandle and 10-15 mph in the Peninsula. Winds may shift out of the southeast in the western Panhandle this afternoon with the sea breeze. *Downed trees from Hurricane Michael continue to pose a hazardous fuel source.* There are currently 7 active wildfires across the state, but all are 100% contained. A County Burn Ban is in effect for Duval, Orange, Hillsborough, Pinellas and Sarasota (prohibited year-round), as well as Washington and Nassau Counties.

The Keetch-Byram Drought Index average for Florida is 201 **(-33)** on a scale from 0 (very moist) to 800 (very dry). There are currently 0 Florida counties with an average KBDI at or above 500.



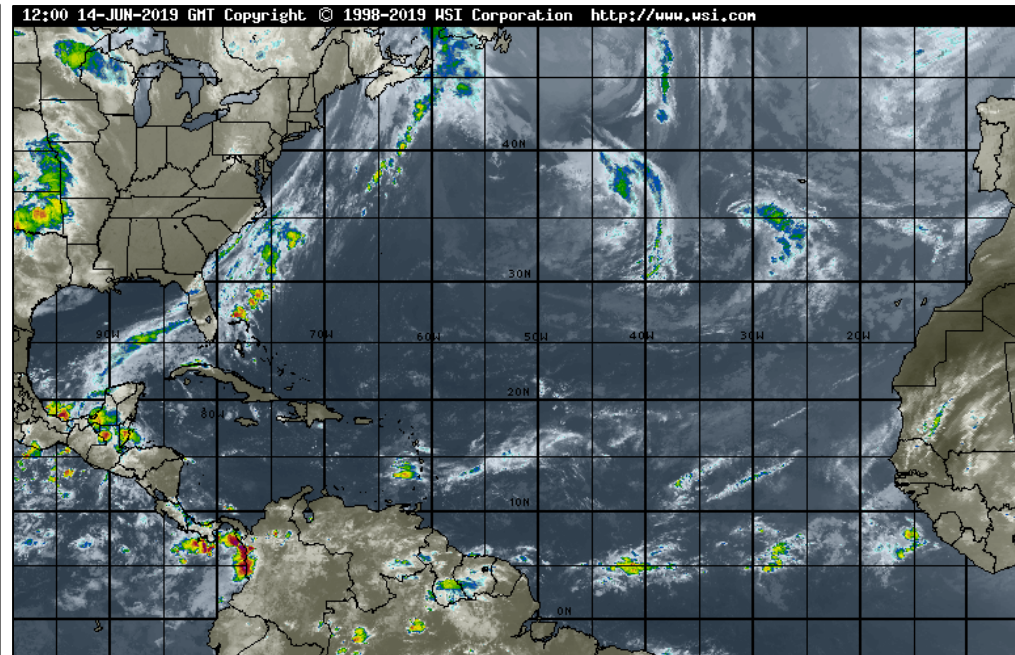
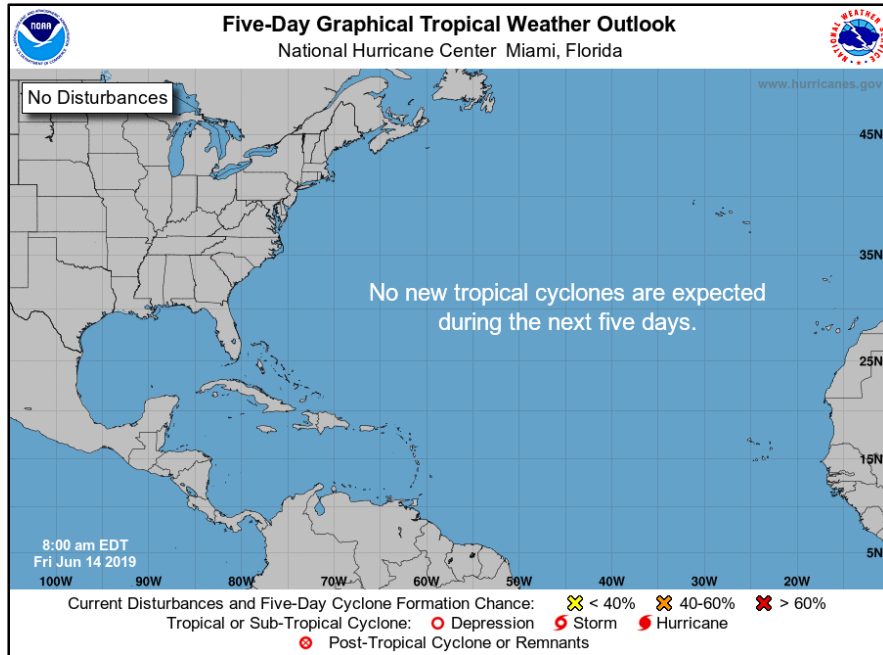
Keetch Byram Drought Index (KBDI)
County Averages for June 13, 2019





Tropical Weather

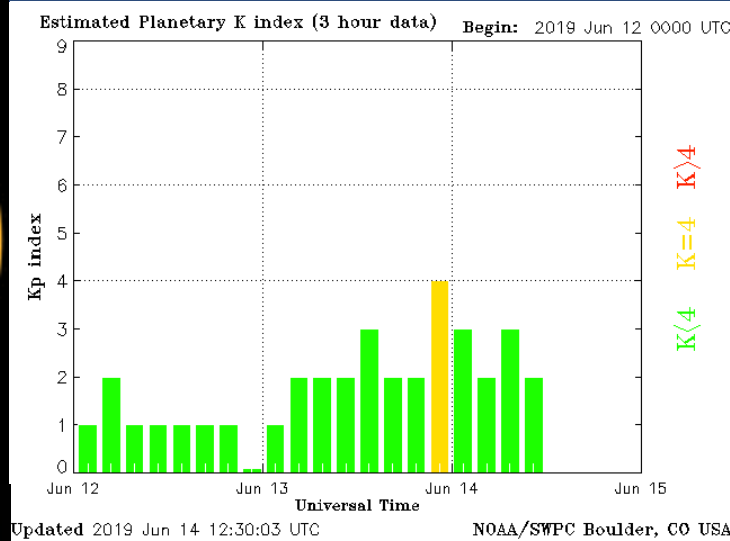
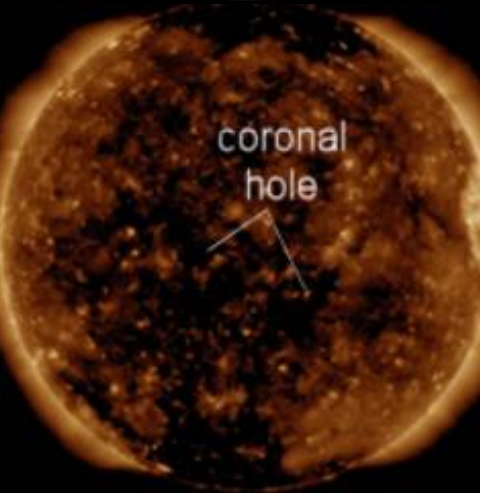
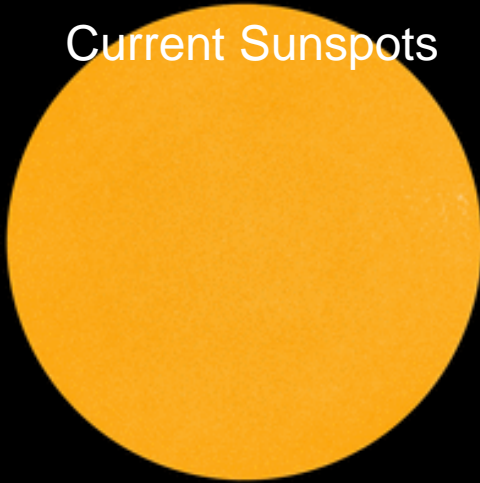
Tropics: Tropical development is not expected over the next 5 days. For more information regarding the tropics, please visit www.hurricanes.gov.





Space Weather

Current Sunspots



Solar Flare Risk	Active Watches & Warnings	Past 24 hours
M-class: 1%	Geomagnetic Storm: No	A7 Solar Flare
X-class: 1%	Radiation Storm: No	No Radio Blackouts
48 Hour Geomagnetic Forecast		
6/14		6/15
Max Kp= 3 (G0)		Max Kp= 3 (G0)
Chance of minor activity = 5% severe activity = 1%		Chance of minor activity = 5% severe activity = 1%

Space Weather: With the sun remaining spotless, the risk for a significant solar flare is zero. Solar wind from the noted coronal hole could graze Earth's magnetic field early next week. The space weather threat to Florida remains very low.



SWO Communications Systems & Contact Information

Equipment	Contact	Status	Comments
Phone:	800-320-0519 or 850-815-4001	Operational	
Fax:	850-815-4979	Operational	
Email:	SWP@em.myflorida.com	Operational	
SWO Tracker:	https://apps.floridadisaster.org/SWO/	Operational	
SLERS:	DEM Statewide	Operational	
NAWAS:	State Watch Office	Operational	
EMnet Message:	FL.000- State Watch Office	Operational	
EMnet Voice:	FL SWP- State Watch Office	Operational	
State EAS:	LP.1 Stations via Emnet	Operational	
FL Interoperable Network:	SOFEOC	Operational	
Satellite Phone:	888-890-5178 or 480-263-8838	Operational	
Website:	http://www.floridadisaster.org	Operational	
WebEOC:	https://eoc.floridadisaster.org/eoc7/	Operational	

Users wishing to subscribe (approval pending) to this distribution list, register at:
https://public.govdelivery.com/accounts/FLDEM/subscriber/new?topic_id=Morning_SITREP