



# Florida Division of Emergency Management State Watch Office

Morning Situation Report  
Wednesday, October 17, 2018



# State Emergency Operations Center Activation Level

Level 1 Activation



# SERT On-Call Personnel

Position	Personnel	Phone	Email
Operations Chief	Ashley Davis	(850) 544-8373	<a href="mailto:Ashley.Davis@em.myflorida.com">Ashley.Davis@em.myflorida.com</a>
Watch Officer	Axel Runtschke	(850) 841-9619	<a href="mailto:Axel.Runtschke@em.myflorida.com">Axel.Runtschke@em.myflorida.com</a>
Duty Officer	Taylor Cheney	(850) 545-4047	<a href="mailto:Taylor.Cheney@em.myflorida.com">Taylor.Cheney@em.myflorida.com</a>
Operations Officer- Day	Woody Harvey	(850) 815-4001	<a href="mailto:SWP@em.myflorida.com">SWP@em.myflorida.com</a>
Operations Officer- Swing	Chris Dorans	(850) 815-4001	<a href="mailto:SWP@em.myflorida.com">SWP@em.myflorida.com</a>
Operations Officer- Night	Jim Lawhon	(850) 815-4001	<a href="mailto:SWP@em.myflorida.com">SWP@em.myflorida.com</a>
Meteorologist	Michael Spagnolo	(850) 508-0245	<a href="mailto:Michael.Spagnolo@em.myflorida.com">Michael.Spagnolo@em.myflorida.com</a>
Plans Chief	Ryan Lock	(850) 841-9484	<a href="mailto:Plans_Command@em.myflorida.com">Plans_Command@em.myflorida.com</a>
Logistics Chief	Andrew Baxter	(850) 559-9648	<a href="mailto:log3@em.myflorida.com">log3@em.myflorida.com</a>
Human Services Director	Pam Hughes	(850) 528-5638	<a href="mailto:Pam.Hughes@em.myflorida.com">Pam.Hughes@em.myflorida.com</a>
Emergency Services Director	Rob Dietrich	(850) 815-4321	<a href="mailto:Robert.Dietrich@em.myflorida.com">Robert.Dietrich@em.myflorida.com</a>
Infrastructure Branch Director	Danny Kilcollins	(850) 519-8581	<a href="mailto:Danny.Kilcollins@em.myflorida.com">Danny.Kilcollins@em.myflorida.com</a>
ESF 8 On-Call	Robert Mills	(850) 766-0435	<a href="mailto:Robert.Mills@flhealth.gov">Robert.Mills@flhealth.gov</a>
Public Information Officer	Alberto Moscoso	(850) 321-8503	<a href="mailto:Alberto.Moscoso@em.myflorida.com">Alberto.Moscoso@em.myflorida.com</a>
DEM Finance and Admin	Phyllis Vaughn	(850) 879-0723	<a href="mailto:Phyllis.Vaughn@em.myflorida.com">Phyllis.Vaughn@em.myflorida.com</a>



# Regional EM Liaison Team

Regional EM Liaisons	County Location	Status / Activities
REMLT Manager: Jim Roberts	Leon	Michael Response Operations
Region 1: Wanda Stafford	In Region	Michael Response Operations
Region 2: Brian Bradshaw	Branch IV	Michael Response Operations
Region 3: Gina Lambert	Washington	Michael Response Operations
Region 4: Paul Siddall	Bay, Gulf	Michael Response Operations
Region 5: Vacant	VACANT	See Coverage
Region 6: Jodie Fiske	Leon	Michael Response Operations
Region 7: Willie Bouie	Branch IV	Michael Response Operations

R3 covering Lake, Seminole, & Volusia

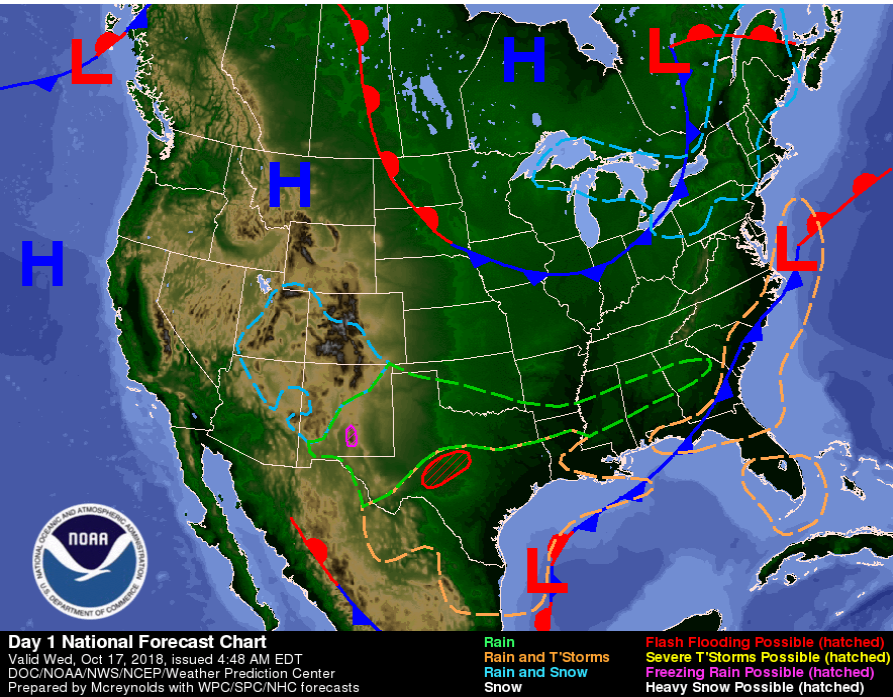
R4 covering Brevard, Orange, & Osceola

R7 covering R6, Indian River, Martin, & St. Lucie

Status
Normal Operations
Delayed Response
Out of Service / Unavailable



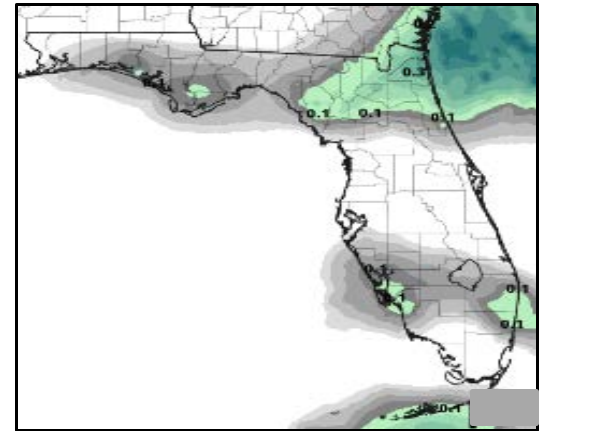
# Meteorology Summary



Today's Weather Map

Threat	R1	R2	R3	R4	R5	R6	R7
Lightning	L	L	L			L	L
Flooding (Rivers)	M						
Damaging Wind							
Hail							
Tornado							
Excessive Heat			L	L	L	L	L
Fire							
Fog							
Rip Currents	H	H	M	L	M	L	H
Space Weather	Very Low						
Lake Okeechobee Status:	Elevation is at 14.19 ft.						
Keetch-Byram Drought Index:	313 (+14) on a scale from 0 (very moist) to 800 (very dry)						

Rainfall Amounts Next 24 Hours





# Meteorology Summary

## Statewide Overview, Next 24 Hours:

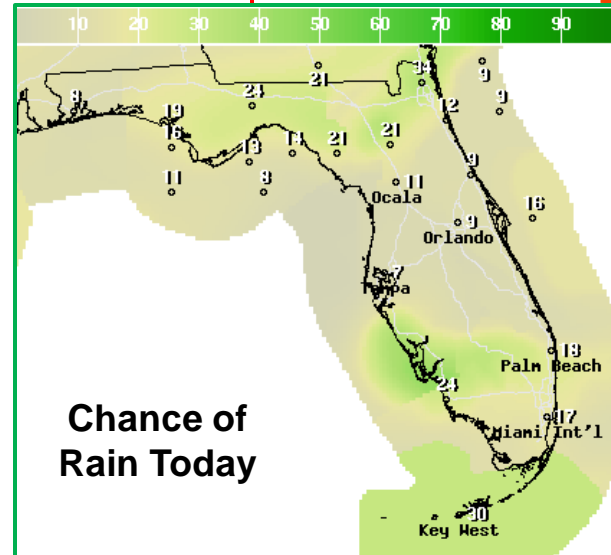
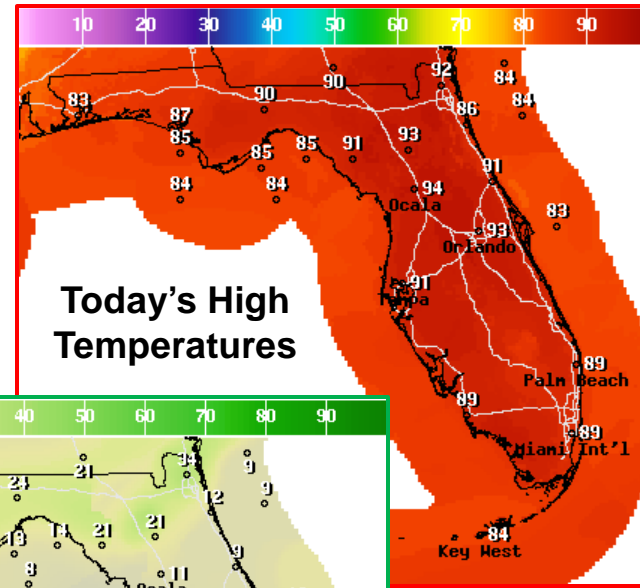
A weak cold front is moving through North Florida today bringing cooler temperatures to the western Panhandle. Relief is still another day away from the rest of North Florida.

Dense fog is dissipating this morning and will leave skies partly cloudy for the rest of the day. With the exception of the western Panhandle, temperatures will reach near 90 degrees mid-afternoon. Scattered showers and an isolated thunderstorm will develop across the Big Bend and Northeast Florida, with rain chances generally 20-30%. There is no threat for severe weather.

In the Peninsula, temperatures will be a few degrees warmer with the heat index reaching 98-103 degrees. Rain chances will generally be near 10% (only an isolated shower) except across Southwest Florida and the Keys.

A stray shower will remain possible overnight statewide, particularly in Northeast Florida. Skies will otherwise be clear. Low temperatures will be in the lower to middle 70s statewide.

Winds will be out of the north at 5-10 mph in North Florida. Winds across the Peninsula will be out of the east at 5-10 mph. Windy conditions are expected across the Keys.



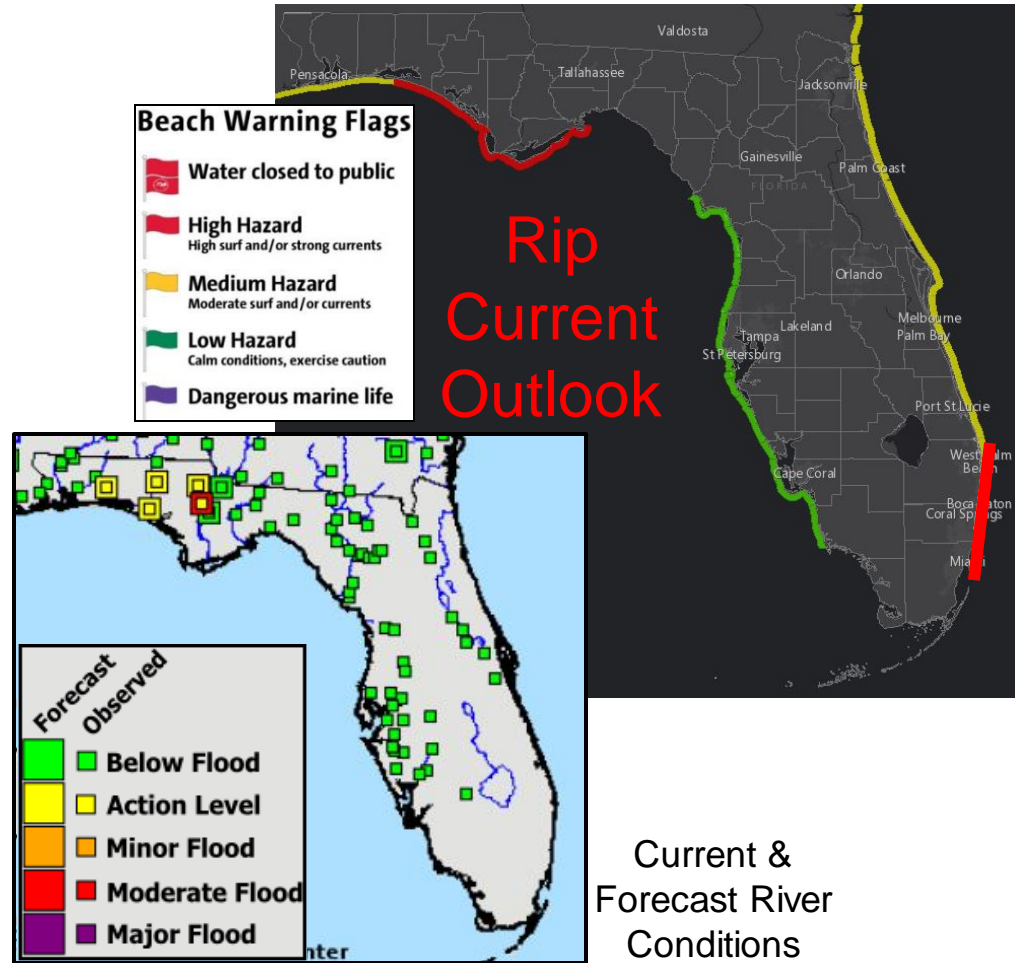


# Coastal Hazards / Hydrology

**Rip Currents:** Onshore winds will continue to result in a **moderate risk of rip currents** for Northeast and East Central Florida Beaches. A **high** risk is forecast for Southeast Florida. The rip current risk remains **high** along parts of the Panhandle, specifically from Walton County to Franklin County with a **moderate** risk to the west. Wave heights will be around 1-3' along all beaches. *Remember, always swim within sight of a lifeguard. Rip currents can still occur on low risk days!*

**Lake Okeechobee** average elevation is 14.19 feet, which is 0.86 feet below normal for this time of year.

**Hydrology:** A **River Flood Warning** remains in effect for the Chipola River at Altha. The river will have a second crest in moderate flood stage on Wednesday and Thursday. Impacts to CR 274 in Calhoun County, along with downstream homes in Scott's Ferry should be expected through the middle of this week. Otherwise, little additional rainfall is expected in the region for the next 5 days. All other rivers are below flood stage, and are currently cresting or already receding. For more information on specific river stages, please visit the Southeast River Forecast Center [here](#).

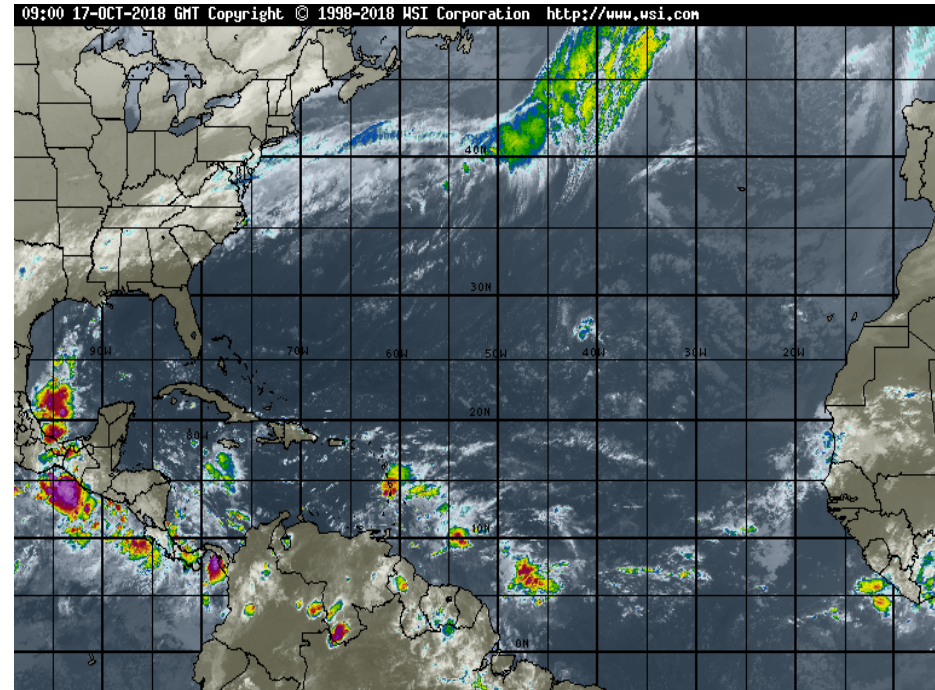
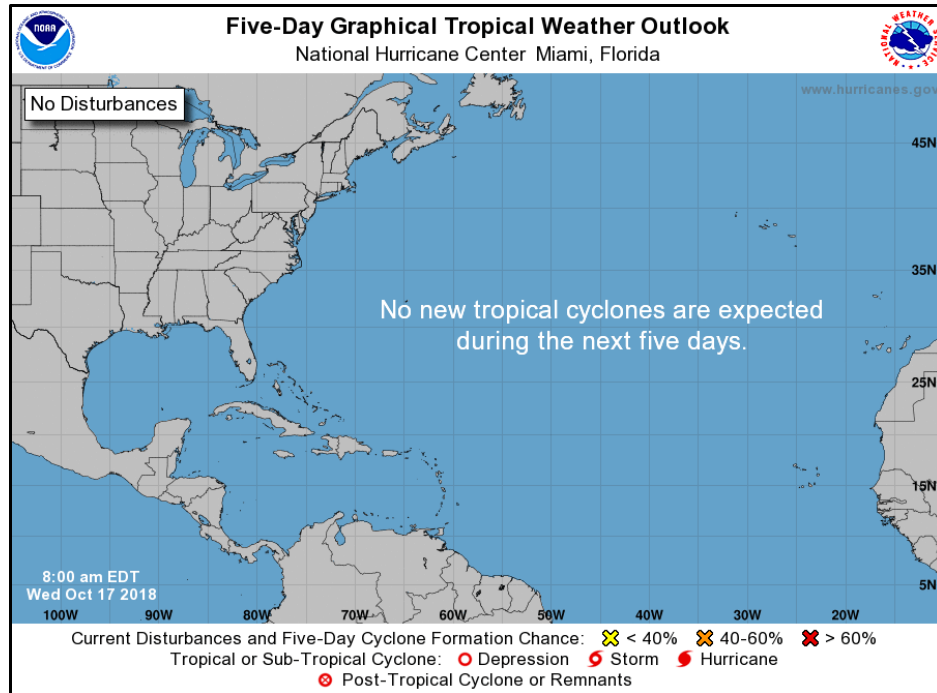


Current & Forecast River Conditions



# Tropical Weather

**Tropics:** No tropical development is expected in the Atlantic, Gulf of Mexico, or Caribbean Sea over the next five days. For more information on the tropics, please visit the National Hurricane Center at [www.hurricanes.gov](http://www.hurricanes.gov).

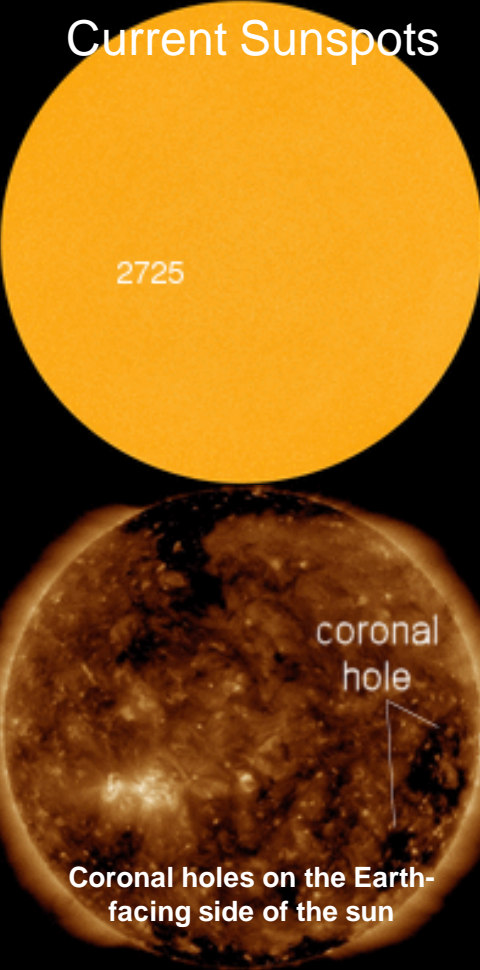






# Space Weather

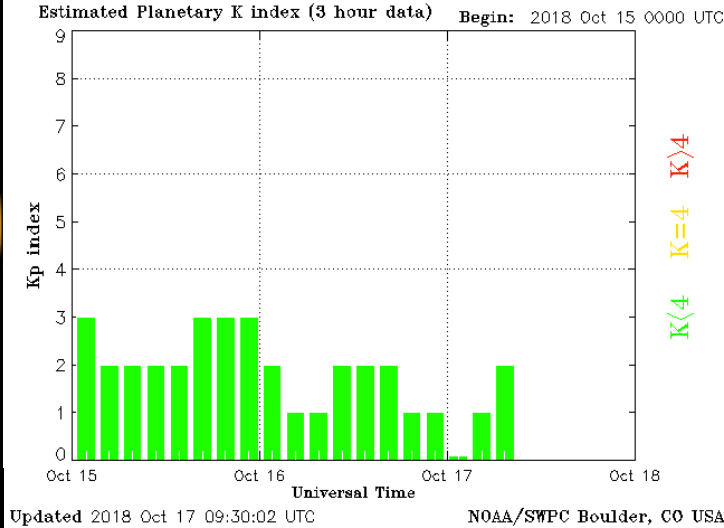
## Current Sunspots



2725

coronal hole

Coronal holes on the Earth-facing side of the sun



Solar Flare Risk	Active Watches & Warnings	Past 24 hours
M-class: 1%	Geomagnetic Storm: No	A1 Solar Flare
X-class: 1%	Radiation Storm: No	No Radio Blackouts
48 Hour Geomagnetic Forecast		
10/17		10/18
Max Kp= 2 (G0)		Max Kp= 4 (G0)
Chance of minor activity = 1% severe activity = 1%		Chance of minor activity = 10% severe activity = 1%

**Space Weather:** Sunspot #2725 is small, unorganized, and poses no threat of a significant solar flare. Geomagnetic conditions remain quiet and are expected to remain that way over the next 24 hours. Some unsettled conditions are possible late tomorrow and Friday. The space weather threat to Florida is very low.



# SWO Communications Systems & Contact Information

Equipment	Contact	Status	Comments
<b>Phone:</b>	800-320-0519 or 850-815-4001	Operational	
<b>Fax:</b>	850-815-4979	Operational	
<b>Email:</b>	<a href="mailto:SWP@em.myflorida.com">SWP@em.myflorida.com</a>	Operational	
<b>SWO Tracker:</b>	<a href="https://apps.floridadisaster.org/SWO/">https://apps.floridadisaster.org/SWO/</a>	Operational	
<b>SLERS:</b>	DEM Statewide	Operational	
<b>NAWAS:</b>	State Watch Office	Operational	
<b>EMnet Message:</b>	FL.000- State Watch Office	Operational	
<b>EMnet Voice:</b>	FL SWP- State Watch Office	Operational	
<b>State EAS:</b>	LP.1 Stations via Emnet	Operational	
<b>FL Interoperable Network:</b>	SOFEOC	Operational	
<b>Website:</b>	<a href="http://www.floridadisaster.org">http://www.floridadisaster.org</a>	Operational	
<b>WebEOC:</b>	<a href="https://eoc.floridadisaster.org/eoc7/">https://eoc.floridadisaster.org/eoc7/</a>	Operational	

Users wishing to subscribe (approval pending) to this distribution list, register at:  
[https://public.govdelivery.com/accounts/FLDEM/subscriber/new?topic\\_id=Morning\\_SITREP](https://public.govdelivery.com/accounts/FLDEM/subscriber/new?topic_id=Morning_SITREP)