



# Florida Division of Emergency Management State Watch Office

Morning Situation Report

Tuesday, October 16, 2018



# State Emergency Operations Center Activation Level

Level 1 Activation



# SERT On-Call Personnel

Position	Personnel	Phone	Email
Operations Chief	Ashley Davis	(850) 544-8373	<a href="mailto:Ashley.Davis@em.myflorida.com">Ashley.Davis@em.myflorida.com</a>
Watch Officer	Axel Runtschke	(850) 841-9619	<a href="mailto:Axel.Runtschke@em.myflorida.com">Axel.Runtschke@em.myflorida.com</a>
Duty Officer	Taylor Cheney	(850) 545-4047	<a href="mailto:Taylor.Cheney@em.myflorida.com">Taylor.Cheney@em.myflorida.com</a>
Operations Officer- Day	Woody Harvey	(850) 815-4001	<a href="mailto:SWP@em.myflorida.com">SWP@em.myflorida.com</a>
Operations Officer- Swing	Chris Dorans	(850) 815-4001	<a href="mailto:SWP@em.myflorida.com">SWP@em.myflorida.com</a>
Operations Officer- Night	Jim Lawhon	(850) 815-4001	<a href="mailto:SWP@em.myflorida.com">SWP@em.myflorida.com</a>
Meteorologist	Michael Spagnolo	(850) 508-0245	<a href="mailto:Michael.Spagnolo@em.myflorida.com">Michael.Spagnolo@em.myflorida.com</a>
Plans Chief	Ryan Lock	(850) 841-9484	<a href="mailto:Plans_Command@em.myflorida.com">Plans_Command@em.myflorida.com</a>
Logistics Chief	Andrew Baxter	(850) 559-9648	<a href="mailto:log3@em.myflorida.com">log3@em.myflorida.com</a>
Human Services Director	Pam Hughes	(850) 528-5638	<a href="mailto:Pam.Hughes@em.myflorida.com">Pam.Hughes@em.myflorida.com</a>
Emergency Services Director	Rob Dietrich	(850) 815-4321	<a href="mailto:Robert.Dietrich@em.myflorida.com">Robert.Dietrich@em.myflorida.com</a>
Infrastructure Branch Director	Danny Kilcollins	(850) 519-8581	<a href="mailto:Danny.Kilcollins@em.myflorida.com">Danny.Kilcollins@em.myflorida.com</a>
ESF 8 On-Call	Christie Mathison	(850) 519-1750	<a href="mailto:Christie.Mathison@flhealth.gov">Christie.Mathison@flhealth.gov</a>
Public Information Officer	Alberto Moscoso	(850) 321-8503	<a href="mailto:Alberto.Moscoso@em.myflorida.com">Alberto.Moscoso@em.myflorida.com</a>
DEM Finance and Admin	Phyllis Vaughn	(850) 879-0723	<a href="mailto:Phyllis.Vaughn@em.myflorida.com">Phyllis.Vaughn@em.myflorida.com</a>



# Regional EM Liaison Team

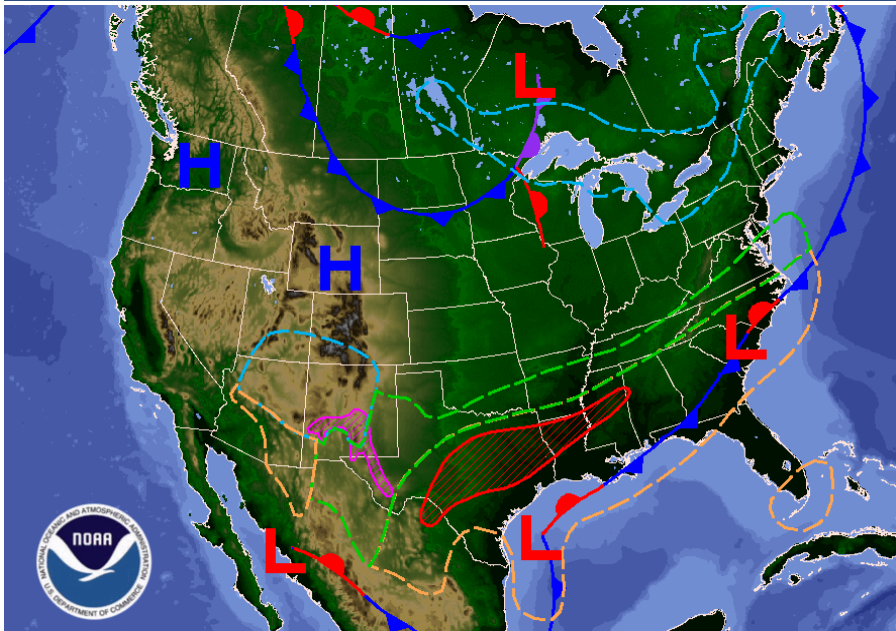
Regional EM Liaisons	County Location	Status / Activities
REMLT Manager: Jim Roberts	Leon	Michael Response Operations
Region 1: Wanda Stafford	In Region	Michael Response Operations
Region 2: Brian Bradshaw	In Region	Michael Response Operations
Region 3: Gina Lambert	Region 1	Michael Response Operations
Region 4: Paul Siddall	Region 2	Michael Response Operations
Region 5: Vacant	VACANT	See Coverage
Region 6: Jodie Fiske	Leon	Michael Response Operations
Region 7: Willie Bouie	Broward	County EM Visit / Michael Monitoring

R3 covering Lake, Seminole, & Volusia  
 R4 covering Brevard, Orange, & Osceola  
 R7 covering R6, Indian River, Martin, & St. Lucie

Status
Normal Operations
Delayed Response
Out of Service / Unavailable



# Meteorology Summary



**Day 1 National Forecast Chart**

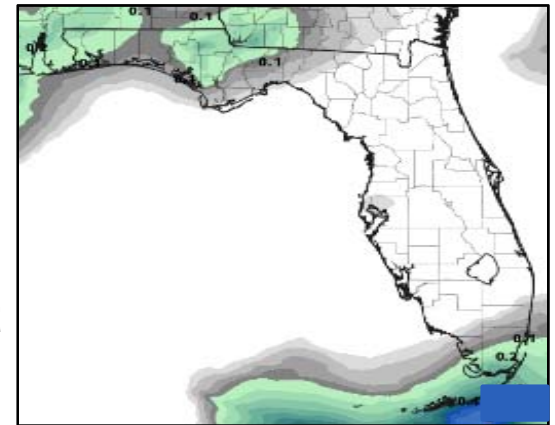
Valid Tue, Oct 16, 2018, issued 4:45 AM EDT  
 DOC/NOAA/NWS/NCEP/Weather Prediction Center  
 Prepared by McCreynolds with WPC/SPC/NHC forecasts

Rain  
 Rain and T'Storms  
 Rain and Snow  
 Snow  
 Flash Flooding Possible (hatched)  
 Severe T'Storms Possible (hatched)  
 Freezing Rain Possible (hatched)  
 Heavy Snow Possible (hatched)

Threat	R1	R2	R3	R4	R5	R6	R7
Lightning	L	L					L
Flooding (Rivers)	M						
Damaging Wind							
Hail							
Tornado							
Excessive Heat	L	L	L	L	L	L	L
Fire							
Fog	M	M					
Rip Currents	H	H	M	L	M	L	M
Space Weather	Very Low						
Lake Okeechobee Status:	Elevation is at 14.22 ft.						
Keetch-Byram Drought Index:	299 (+13) on a scale from 0 (very moist) to 800 (very dry)						

## Today's Weather Map

## Rainfall Amounts Next 24 Hours







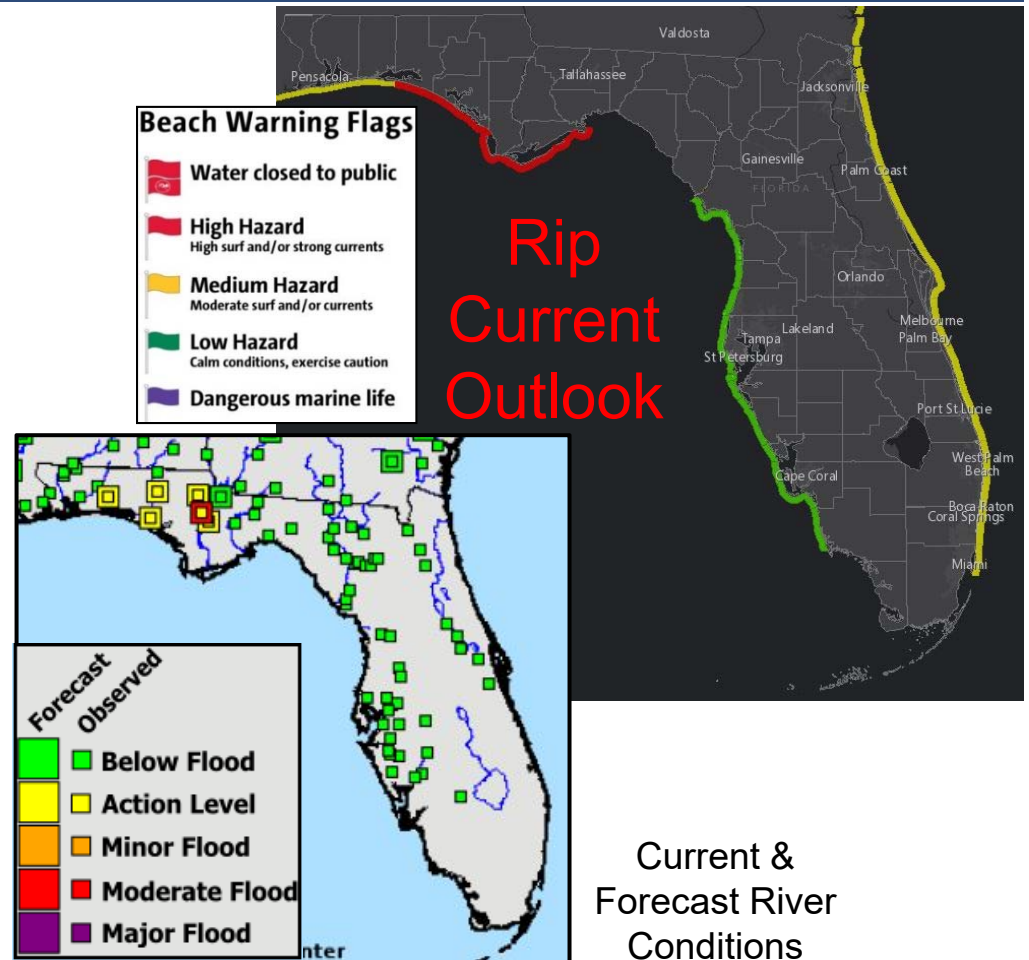


# Coastal Hazards / Hydrology

**Rip Currents:** Onshore winds will continue to result in a **moderate risk of rip currents** for all Atlantic Beaches. The rip current risk remains **high** along parts of the Panhandle, specifically from Walton County to Franklin County. Wave heights will be around 1-3' along all beaches. *Remember, always swim within sight of a lifeguard. Rip currents can still occur on low risk days!*

**Lake Okeechobee** average elevation was 14.22 feet as of last Thursday, which was 0.80 feet below normal for this time of year. No significant lake level change has occurred since then.

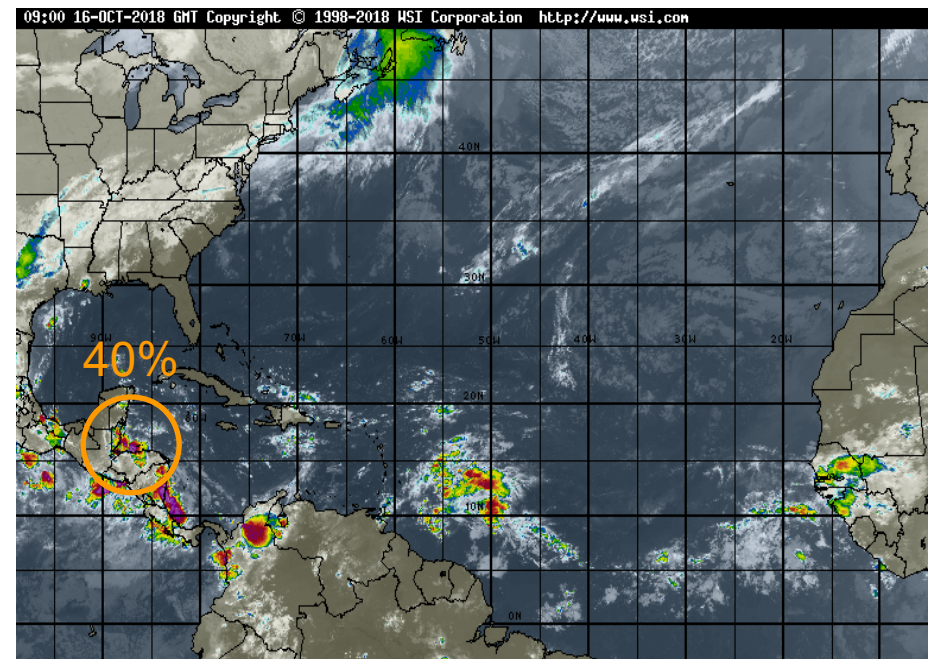
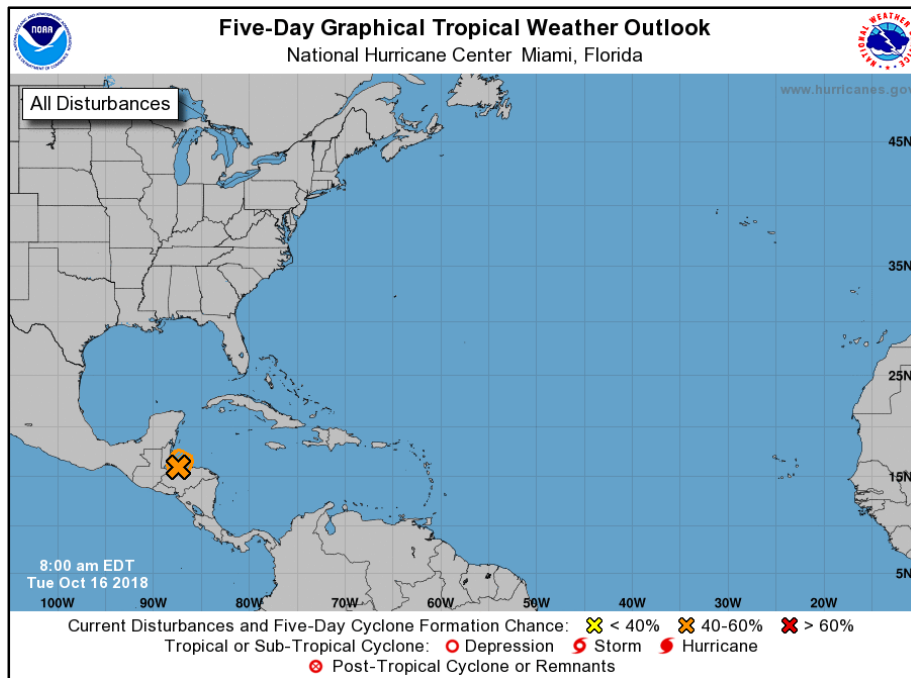
**Hydrology:** A **River Flood Warning** remains in effect for the Chipola River at Altha. The river will have a second crest in moderate flood stage on Wednesday and Thursday. Impacts to CR 274 in Calhoun County, along with downstream homes in Scott's Ferry should be expected through the middle of this week. Otherwise, little additional rainfall is expected in the region for the next 7 days. All other rivers are below flood stage, and are currently cresting or already receding. For more information on specific river stages, please visit the Southeast River Forecast Center [here](#).





# Tropical Weather

**Tropics:** A broad area of low pressure in the western Caribbean Sea has become better organized overnight, but it is nearly over land. The close proximity to land is expected to limit any further organization as it moves entirely inland by this afternoon. This system poses no threat to Florida or the Gulf of Mexico. The National Hurricane Center gives the system a 40% (**medium**) chance of development. The next name on the list is Oscar, or if first a tropical depression, number 16. For more information on the tropics, please visit the National Hurricane Center at [www.hurricanes.gov](http://www.hurricanes.gov).

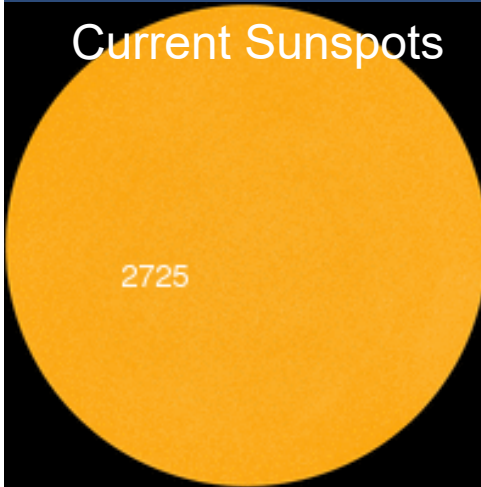




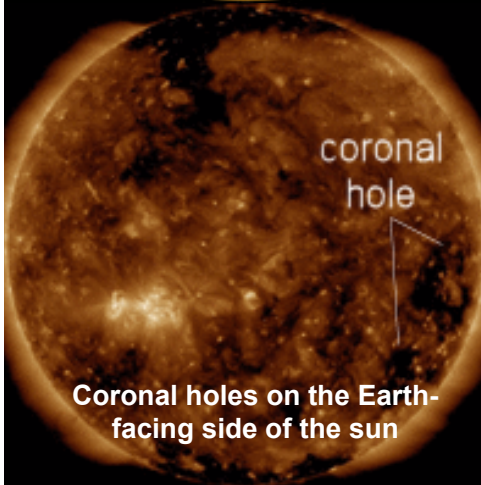


# Space Weather

## Current Sunspots

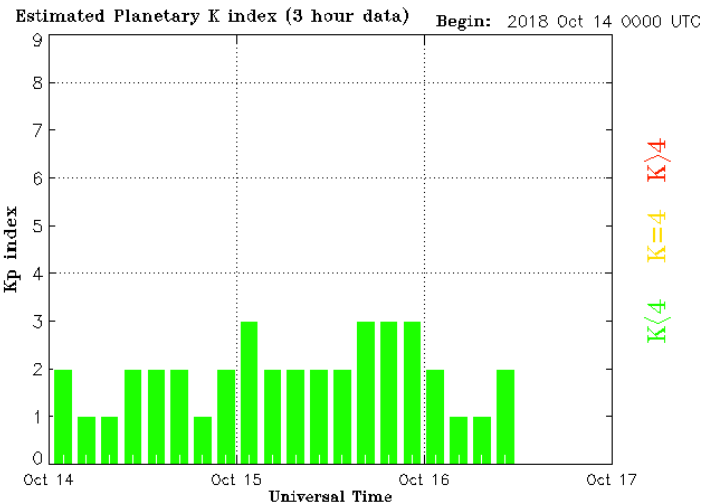


2725



coronal hole

Coronal holes on the Earth-facing side of the sun



Solar Flare Risk	Active Watches & Warnings	Past 24 hours
M-class: 1%	Geomagnetic Storm: No	A1 Solar Flare
X-class: 1%	Radiation Storm: No	No Radio Blackouts
48 Hour Geomagnetic Forecast		
10/16		10/17
Max Kp= 3 (G0)		Max Kp= 2 (G0)
Chance of minor activity = 5% severe activity = 1%		Chance of minor activity = 1% severe activity = 1%

**Space Weather:** Sunspot #2725 is small, unorganized, and poses no threat of a significant solar flare. Geomagnetic conditions remain quiet and are expected to remain that way over the next 48 hours. The space weather threat to Florida is very low.



# SWO Communications Systems & Contact Information

Equipment	Contact	Status	Comments
<b>Phone:</b>	800-320-0519 or 850-815-4001	Operational	
<b>Fax:</b>	850-815-4979	Operational	
<b>Email:</b>	<a href="mailto:SWP@em.myflorida.com">SWP@em.myflorida.com</a>	Operational	
<b>SWO Tracker:</b>	<a href="https://apps.floridadisaster.org/SWO/">https://apps.floridadisaster.org/SWO/</a>	Operational	
<b>SLERS:</b>	DEM Statewide	Operational	
<b>NAWAS:</b>	State Watch Office	Operational	
<b>EMnet Message:</b>	FL.000- State Watch Office	Operational	
<b>EMnet Voice:</b>	FL SWP- State Watch Office	Operational	
<b>State EAS:</b>	LP.1 Stations via Emnet	Operational	
<b>FL Interoperable Network:</b>	SOFEOC	Operational	
<b>Website:</b>	<a href="http://www.floridadisaster.org">http://www.floridadisaster.org</a>	Operational	
<b>WebEOC:</b>	<a href="https://eoc.floridadisaster.org/eoc7/">https://eoc.floridadisaster.org/eoc7/</a>	Operational	

Users wishing to subscribe (approval pending) to this distribution list, register at:  
[https://public.govdelivery.com/accounts/FLDEM/subscriber/new?topic\\_id=Morning\\_SITREP](https://public.govdelivery.com/accounts/FLDEM/subscriber/new?topic_id=Morning_SITREP)