



Florida Division of Emergency Management State Watch Office

Morning Situation Report

Monday, October 15, 2018



State Emergency Operations Center Activation Level

Level 1 Activation



SERT On-Call Personnel

Position	Personnel	Phone	Email
Operations Chief	Ashley Davis	(850) 544-8373	Ashley.Davis@em.myflorida.com
Watch Officer	Axel Runtschke	(850) 841-9619	Axel.Runtschke@em.myflorida.com
Duty Officer	Taylor Cheney	(850) 545-4047	Taylor.Cheney@em.myflorida.com
Operations Officer- Day	Woody Harvey	(850) 815-4001	SWP@em.myflorida.com
Operations Officer- Swing	Paige Levanti	(850) 815-4001	SWP@em.myflorida.com
Operations Officer- Night	Shane Matthews	(850) 815-4001	SWP@em.myflorida.com
Meteorologist	Michael Spagnolo	(850) 508-0245	Michael.Spagnolo@em.myflorida.com
Plans Chief	Ryan Lock	(850) 841-9484	Plans_Command@em.myflorida.com
Logistics Chief	Andrew Baxter	(850) 528-7506	log3@em.myflorida.com
Human Services Director	Pam Hughes	(850) 528-5638	Pam.Hughes@em.myflorida.com
Emergency Services Director	Rob Dietrich	(850) 815-4321	Robert.Dietrich@em.myflorida.com
Infrastructure Branch Director	Danny Kilcollins	(850) 519-8581	Danny.Kilcollins@em.myflorida.com
ESF 8 On-Call	Christie Mathison	(850) 519-1750	Christie.Mathison@flhealth.gov
Public Information Officer	Alberto Moscoso	(850) 321-8503	Alberto.Moscoso@em.myflorida.com
DEM Finance and Admin	Phyllis Vaughn	(850) 879-0723	Phyllis.Vaughn@em.myflorida.com



Regional EM Liaison Team

Regional EM Liaisons	County Location	Status / Activities
REMLT Manager: Jim Roberts	Leon	Michael Response Operations
Region 1: Wanda Stafford	In Region	Michael Response Operations
Region 2: Brian Bradshaw	In Region	Michael Response Operations
Region 3: Gina Lambert	Region 1	Michael Response Operations
Region 4: Paul Siddall	Region 2	Michael Response Operations
Region 5: Vacant	VACANT	See Coverage
Region 6: Jodie Fiske	Leon	Michael Response Operations
Region 7: Willie Bouie	Broward	County EM Visit / Michael Monitoring

R3 covering Lake, Seminole, & Volusia

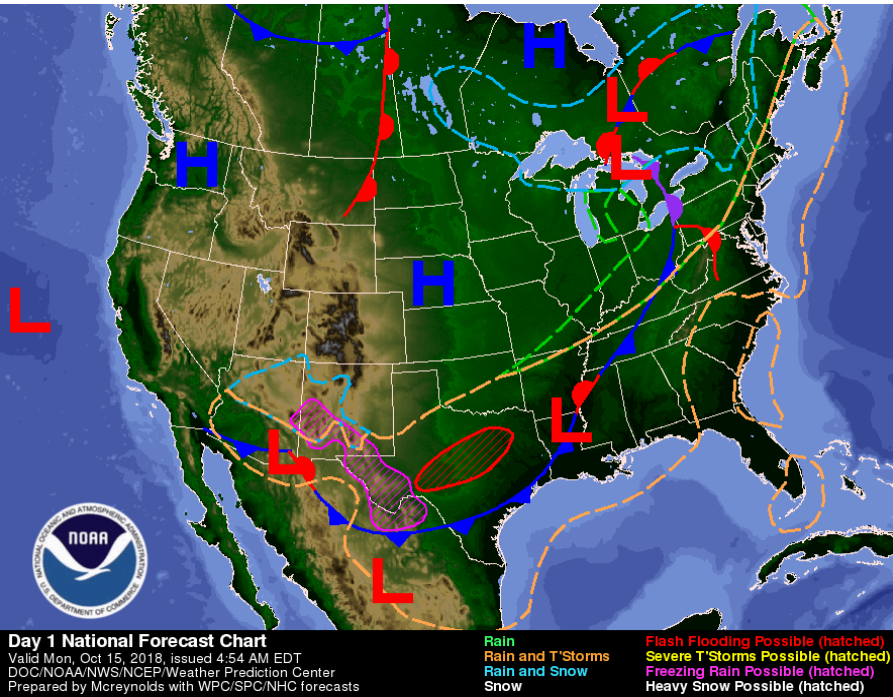
R4 covering Brevard, Orange, & Osceola

R7 covering R6, Indian River, Martin, & St. Lucie

Status
Normal Operations
Delayed Response
Out of Service / Unavailable



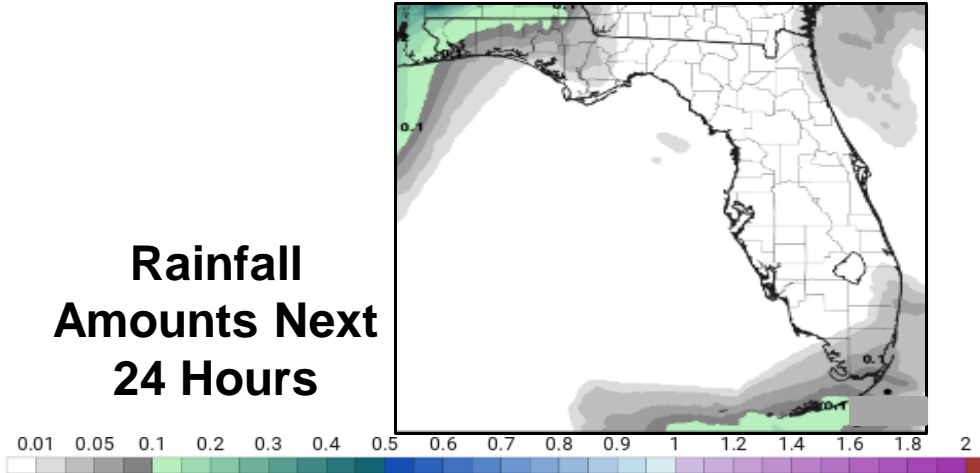
Meteorology Summary



Today's Weather Map

Threat	R1	R2	R3	R4	R5	R6	R7
Lightning	L	L				L	L
Flooding (Rivers)	M						
Damaging Wind							
Hail							
Tornado							
Excessive Heat	L	L	L	L	L	L	L
Fire							
Fog	L	L	L				
Rip Currents	H	H	M	L	M	L	M
Space Weather	Very Low						
Lake Okeechobee Status:	Elevation is at 14.22 ft.						
Keetch-Byram Drought Index:	287 (+12) on a scale from 0 (very moist) to 800 (very dry)						

Rainfall Amounts Next 24 Hours



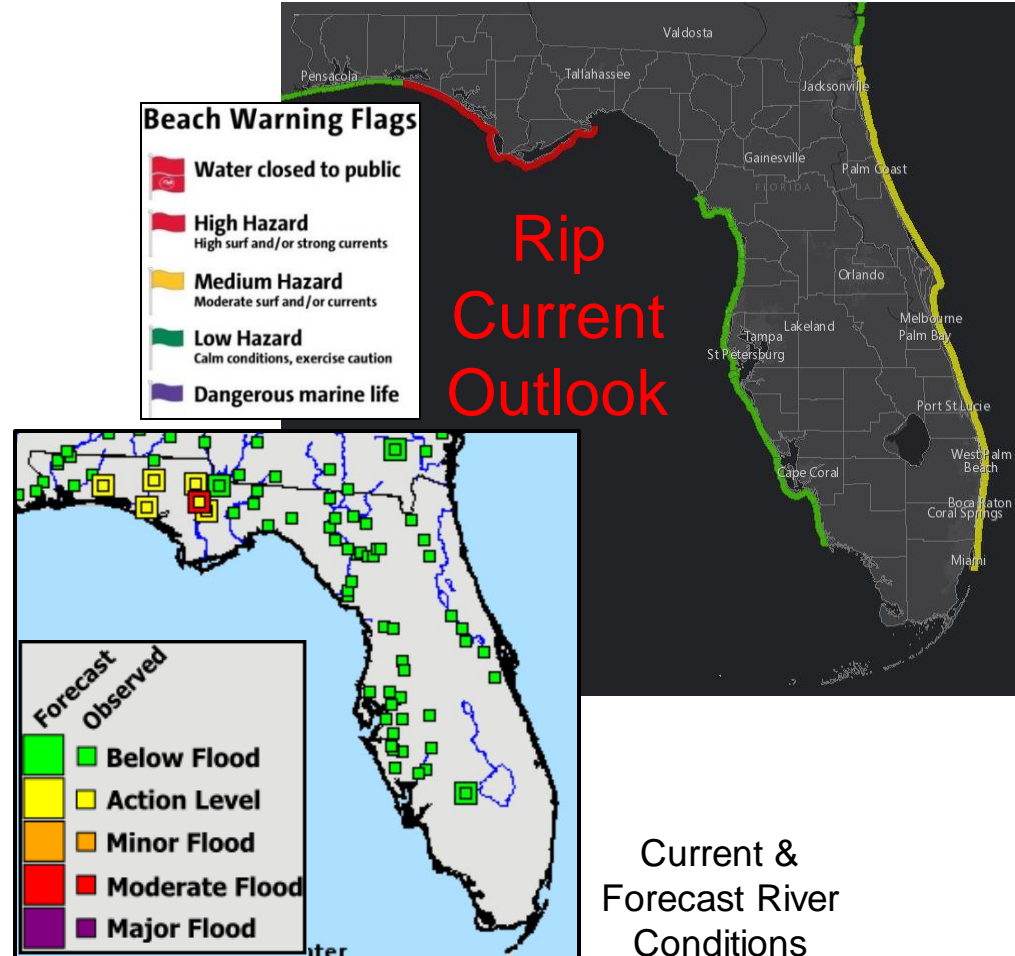


Coastal Hazards / Hydrology

Rip Currents: Onshore winds will continue to result in a **moderate risk of rip currents** for all Atlantic Beaches. The rip current risk remains **high** along parts of the Panhandle, specifically from Walton County to Franklin County. Wave heights will be around 1-3' along all beaches. *Remember, always swim within sight of a lifeguard. Rip currents can still occur on low risk days!*

Lake Okeechobee average elevation was 14.22 feet as of last Thursday, which was 0.80 feet below normal for this time of year. No significant lake level change has occurred since then.

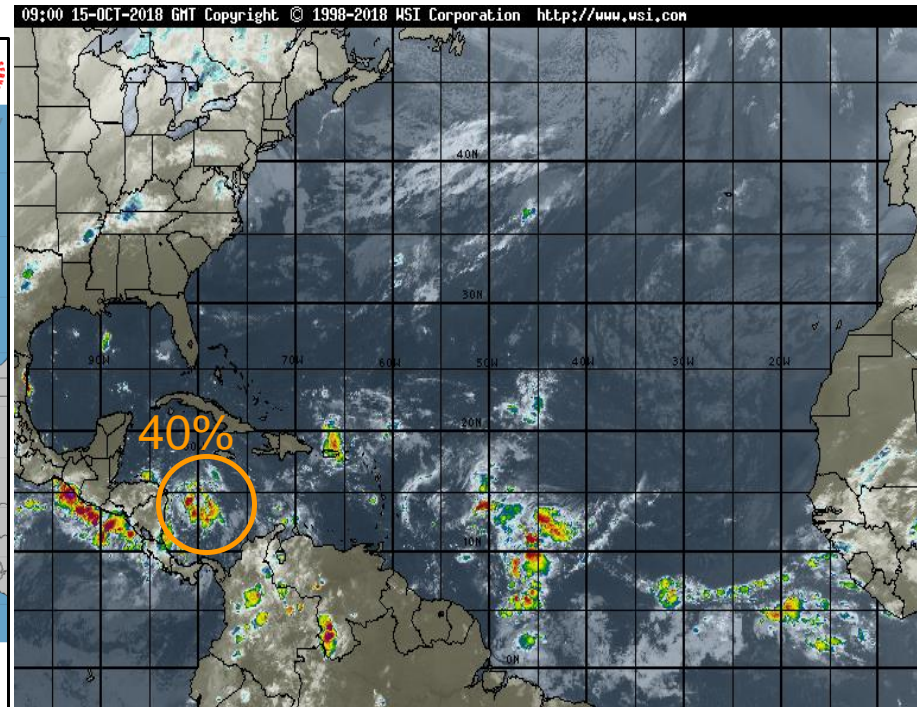
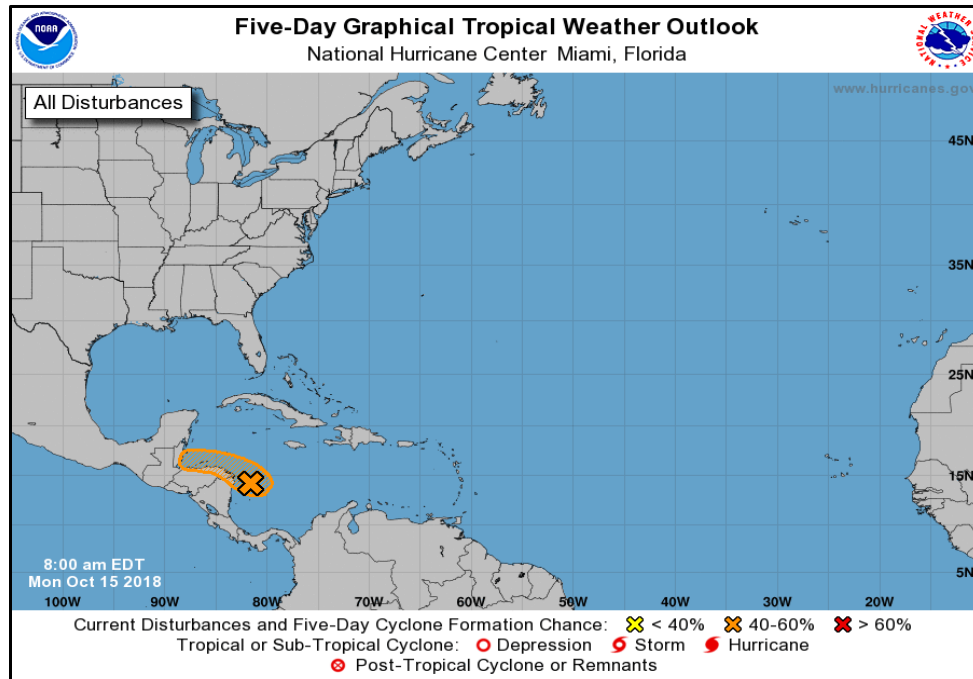
Hydrology: A **River Flood Warning** remains in effect for the Chipola River at Altha. The river will have a second crest in moderate flood stage on Tuesday and Wednesday. Impacts to CR 274, along with downstream homes in Scott's Ferry should be expected through the middle of this week. Otherwise, little additional rainfall is expected in the region for the next 7 days. All other rivers are below flood stage, and are currently cresting or already receding. For more information on specific river stages, please visit the Southeast River Forecast Center [here](#).





Tropical Weather

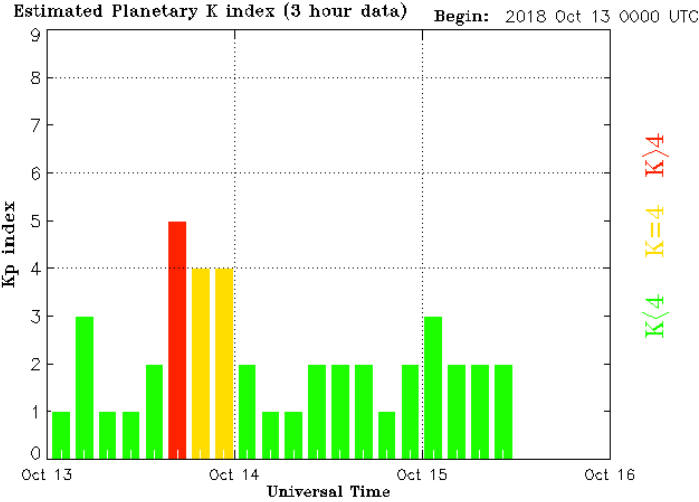
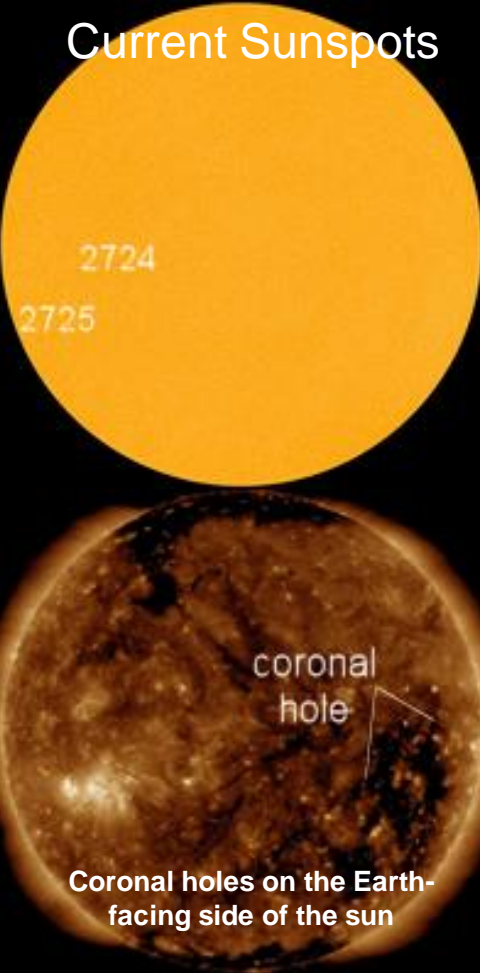
Tropics: The low-latitude tropical wave off the northeast coast of South America was become more disorganized overnight and no longer has any chance of development. Elsewhere, a broad area of low pressure has developed in the southwestern Caribbean Sea. This system has become better organized overnight and a tropical depression may form before it moves inland over Nicaragua and Honduras. This system will track west into Central America and poses no threat to Florida. The National Hurricane Center gives the system a 40% (**medium**) chance of development over the next 48 hours and 5 days. The next name on the list is Oscar, or if first a tropical depression, number 16. For more information on the tropics, please visit the National Hurricane Center at www.hurricanes.gov.





Space Weather

Current Sunspots



Updated 2018 Oct 15 12:30:02 UTC

NOAA/SWPC Boulder, CO USA

Solar Flare Risk	Active Watches & Warnings	Past 24 hours
M-class: 1%	Geomagnetic Storm: No	A1 Solar Flare
X-class: 1%	Radiation Storm: No	No Radio Blackouts
48 Hour Geomagnetic Forecast		
10/15		10/16
Max Kp= 2 (G0)		Max Kp= 2 (G0)
Chance of minor activity = 5% severe activity = 1%		Chance of minor activity = 1% severe activity = 1%

Space Weather: Two small sunspots are on the western edge of the sun's earth-facing disk, but these do not pose a solar flare threat. Some geomagnetic storming was observed due to the labeled coronal hole, but that has since ended. Quiet geomagnetic conditions are expected for the next few days. The space weather threat to Florida is very low.



SWO Communications Systems & Contact Information

Equipment	Contact	Status	Comments
Phone:	800-320-0519 or 850-815-4001	Operational	
Fax:	850-815-4979	Operational	
Email:	SWP@em.myflorida.com	Operational	
SWO Tracker:	https://apps.floridadisaster.org/SWO/	Operational	
SLERS:	DEM Statewide	Operational	
NAWAS:	State Watch Office	Operational	
EMnet Message:	FL.000- State Watch Office	Operational	
EMnet Voice:	FL SWP- State Watch Office	Operational	
State EAS:	LP.1 Stations via Emnet	Operational	
FL Interoperable Network:	SOFEOC	Operational	
Website:	http://www.floridadisaster.org	Operational	
WebEOC:	https://eoc.floridadisaster.org/eoc7/	Operational	

Users wishing to subscribe (approval pending) to this distribution list, register at:
https://public.govdelivery.com/accounts/FLDEM/subscriber/new?topic_id=Morning_SITREP