



Florida Division of Emergency Management State Watch Office

Morning Situation Report

Sunday, October 14, 2018



State Emergency Operations Center Activation Level

Level 1 Activation



SERT On-Call Personnel

Position	Personnel	Phone	Email
Operations Chief	Ashley Davis	(850) 544-8373	Ashley.Davis@em.myflorida.com
Watch Officer	Sam Walters	(850) 519-8638	Sam.Walters@em.myflorida.com
Duty Officer	Taylor Cheney	(850) 545-4047	Taylor.Cheney@em.myflorida.com
Operations Officer- Day	Woody Harvey	(850) 815-4001	SWP@em.myflorida.com
Operations Officer- Swing	Paige Levanti	(850) 815-4001	SWP@em.myflorida.com
Operations Officer- Night	Shane Matthews	(850) 815-4001	SWP@em.myflorida.com
Meteorologist	Michael Spagnolo	(850) 508-0245	Michael.Spagnolo@em.myflorida.com
Plans Chief	Ryan Lock	(850) 841-9484	Plans_Command@em.myflorida.com
Logistics Chief	Chuck Hagan	(850) 528-7506	Charles.Hagan@em.myflorida.com
Human Services Director	Pam Hughes	(850) 528-5638	Pam.Hughes@em.myflorida.com
Emergency Services Director	Rob Dietrich	(850) 815-4321	Robert.Dietrich@em.myflorida.com
Infrastructure Branch Director	Danny Kilcollins	(850) 519-8581	Danny.Kilcollins@em.myflorida.com
ESF 8 On-Call	Christie Mathison	(850) 519-1750	Christie.Mathison@flhealth.gov
Public Information Officer	Alberto Moscoso	(850) 321-8503	Alberto.Moscoso@em.myflorida.com
DEM Finance and Admin	Phyllis Vaughn	(850) 879-0723	Phyllis.Vaughn@em.myflorida.com



Regional EM Liaison Team

Regional EM Liaisons	County Location	Status / Activities
REMLT Manager: Jim Roberts	Leon	Michael Response Operations
Region 1: Wanda Stafford	In Region	Michael Response Operations
Region 2: Brian Bradshaw	In Region	Michael Response Operations
Region 3: Gina Lambert	Washington	Michael Response Operations
Region 4: Paul Siddall	Bay	Michael Response Operations
Region 5: Vacant	VACANT	See Coverage
Region 6: Jodie Fiske	Leon	Michael Response Operations
Region 7: Willie Bouie	In Region	Off & Monitoring

R3 covering Lake, Seminole, & Volusia

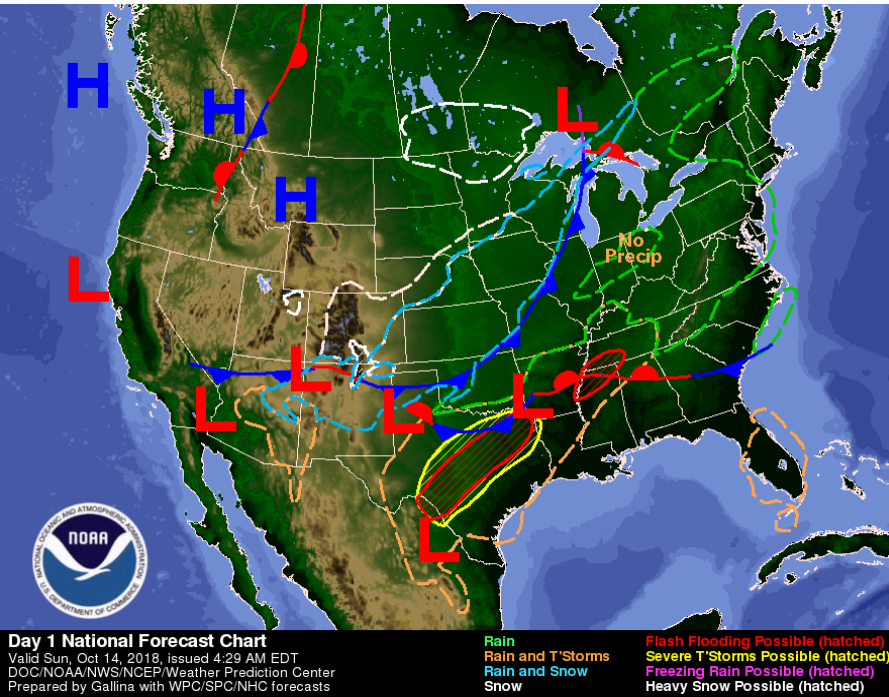
R4 covering Brevard, Orange, & Osceola

R7 covering R6, Indian River, Martin, & St. Lucie

Status
Normal Operations
Delayed Response
Out of Service / Unavailable



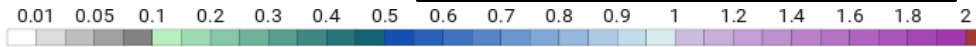
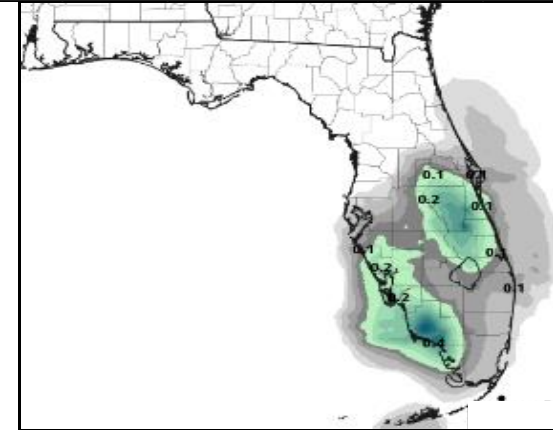
Meteorology Summary



Today's Weather Map

Threat	R1	R2	R3	R4	R5	R6	R7
Lightning				L	L	M	M
Flooding (Rivers)	M						
Damaging Wind							
Hail							
Tornado							
Excessive Heat				L	L	L	L
Fire							
Fog							
Rip Currents	H	H	M	L	M	L	M
Space Weather	Very Low						
Lake Okeechobee Status:	Elevation is at 14.22 ft.						
Keetch-Byram Drought Index:	275 (+8) on a scale from 0 (very moist) to 800 (very dry)						

Rainfall Amounts Next 24 Hours



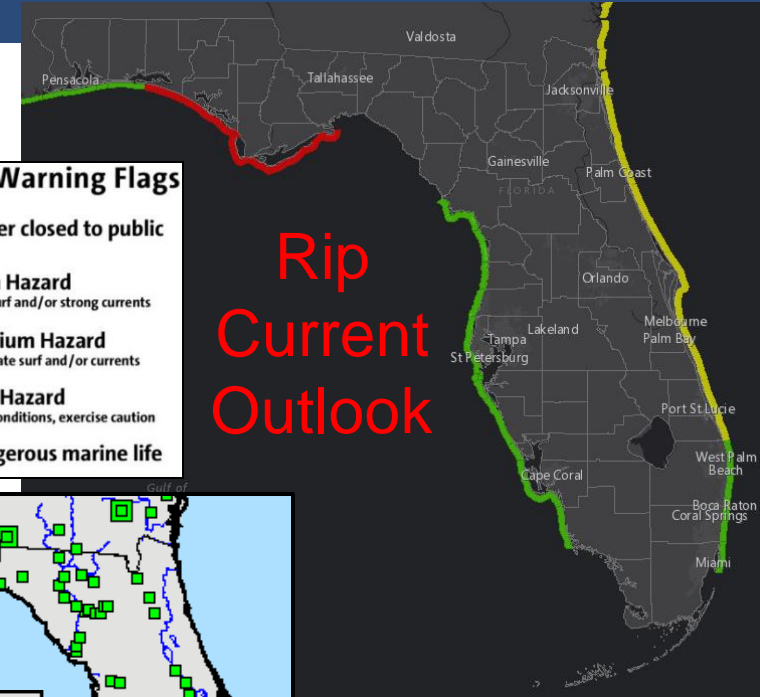


Coastal Hazards / Hydrology

Rip Currents: Onshore winds will continue to result in a **moderate risk of rip currents** for most Atlantic Beaches. Onshore winds will result in a **high risk of rip currents** for some Panhandle and Big Bend beaches. Wave heights will be around 1-3' along all beaches. *Remember, always swim within sight of a lifeguard. Rip currents can still occur on low risk days!*

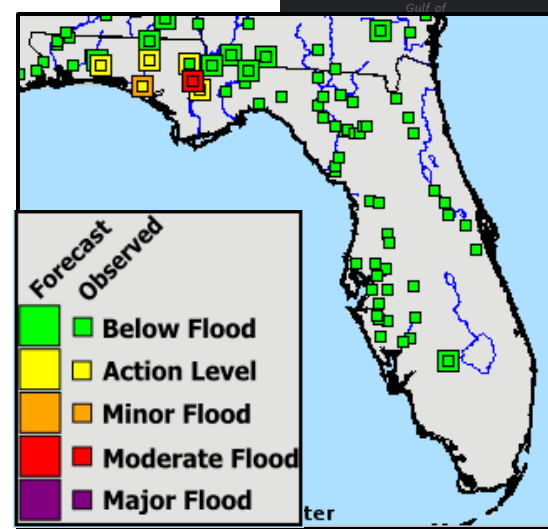
Lake Okeechobee average elevation was 14.22 feet as of Thursday, which was 0.80 feet below normal for this time of year.

Hydrology: River Flood Warnings remain in effect across North Florida for the Chipola River at Altha and Marianna and the lower Choctawhatchee River at Bruce. All should crest at minor to moderate flood stage today or Monday. The Chipola downstream at Scott's Ferry and at Wewahitchka is rising and may crest later this week. The Econfina Creek at SR 20 is receding. Little additional rainfall is expected in the region for the next 7 days. For more information on specific river stages, please visit the Southeast River Forecast Center [here](#).



Beach Warning Flags

- Water closed to public
- High Hazard
High surf and/or strong currents
- Medium Hazard
Moderate surf and/or currents
- Low Hazard
Calm conditions, exercise caution
- Dangerous marine life

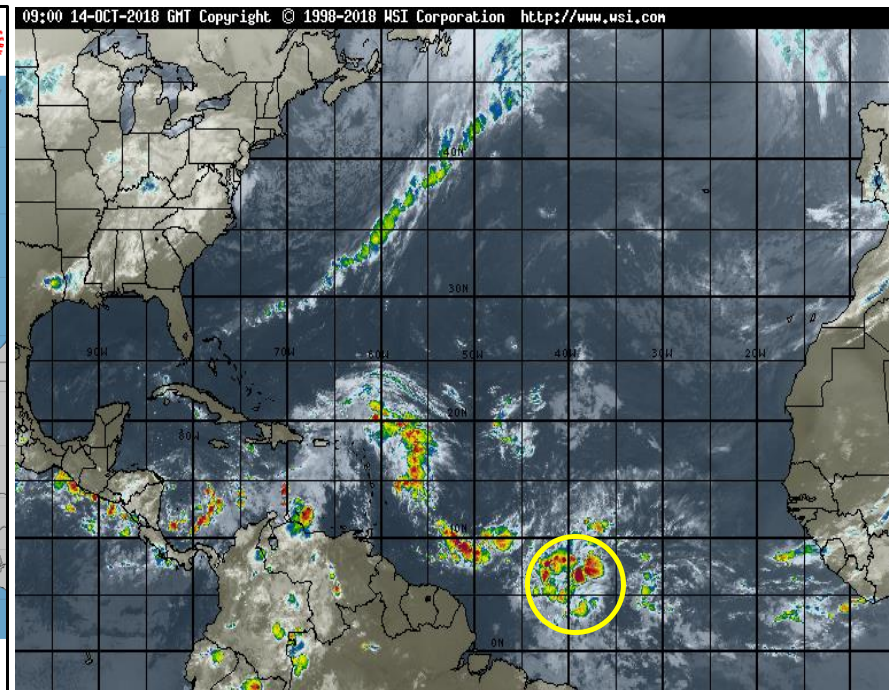
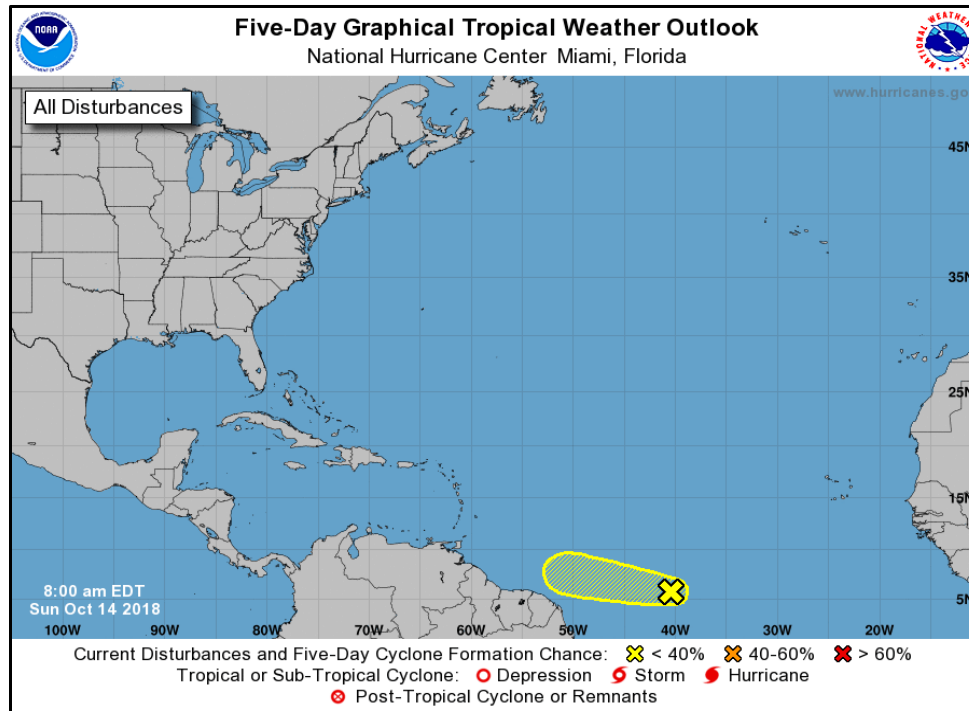


Current & Forecast River Conditions



Tropical Weather

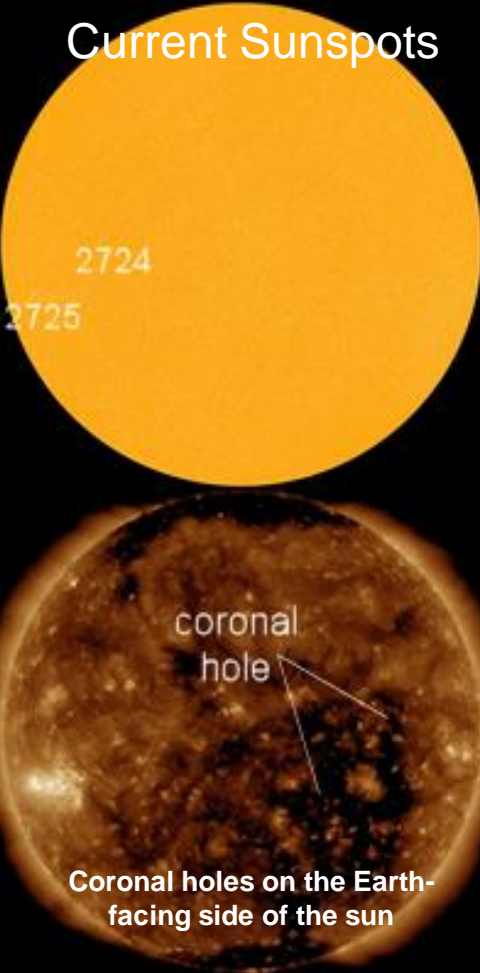
Tropics: A low-latitude tropical wave located about midway between the west coast of Africa and the Lesser Antilles is producing disorganized showers and thunderstorms. Some slight development is possible before conditions become unfavorable early next week. This system has a 10% chance of formation over the next 5 days. Elsewhere, tropical development is not expected during the next 5 days. For more information on the tropics, please visit the National Hurricane Center at www.hurricanes.gov.



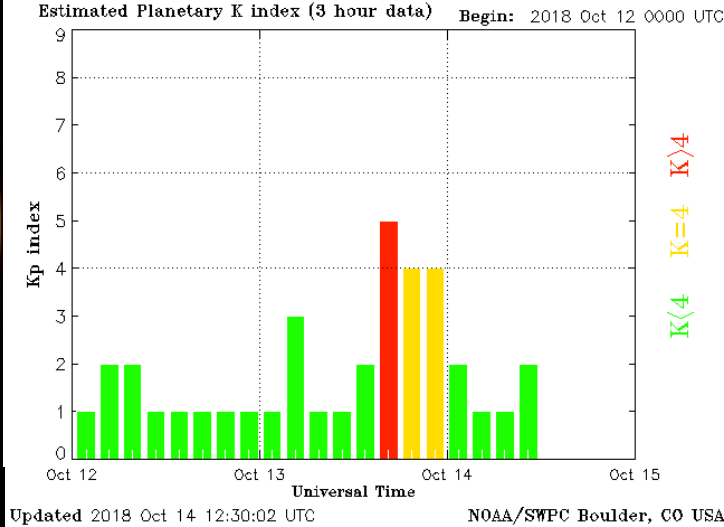


Space Weather

Current Sunspots



Coronal holes on the Earth-facing side of the sun



Solar Flare Risk	Active Watches & Warnings	Past 24 hours
M-class: 1%	Geomagnetic Storm: Yes (G1 Warning)	A1 Solar Flare
X-class: 1%	Radiation Storm: No	No Radio Blackouts
48 Hour Geomagnetic Forecast		
10/14		10/15
Max Kp= 5 (G1)		Max Kp= 3 (G0)
Chance of minor activity = 25% severe activity = 5%		Chance of minor activity = 5% severe activity = 1%

Space Weather: Two small sunspots are on the western edge of the sun's earth-facing disk, but these do not pose a solar flare threat. A large coronal hole is producing a stream of solar winds that is expected to reach Earth later today. G1 storming conditions are possible today poleward of 60 degrees latitude. The space weather threat to Florida is very low.



SWO Communications Systems & Contact Information

Equipment	Contact	Status	Comments
Phone:	800-320-0519 or 850-815-4001	Operational	
Fax:	850-815-4979	Operational	
Email:	SWP@em.myflorida.com	Operational	
SWO Tracker:	https://apps.floridadisaster.org/SWO/	Operational	
SLERS:	DEM Statewide	Operational	
NAWAS:	State Watch Office	Operational	
EMnet Message:	FL.000- State Watch Office	Operational	
EMnet Voice:	FL SWP- State Watch Office	Operational	
State EAS:	LP.1 Stations via Emnet	Operational	
FL Interoperable Network:	SOFEOC	Operational	
Website:	http://www.floridadisaster.org	Operational	
WebEOC:	https://eoc.floridadisaster.org/eoc7/	Operational	

Users wishing to subscribe (approval pending) to this distribution list, register at:
https://public.govdelivery.com/accounts/FLDEM/subscriber/new?topic_id=Morning_SITREP