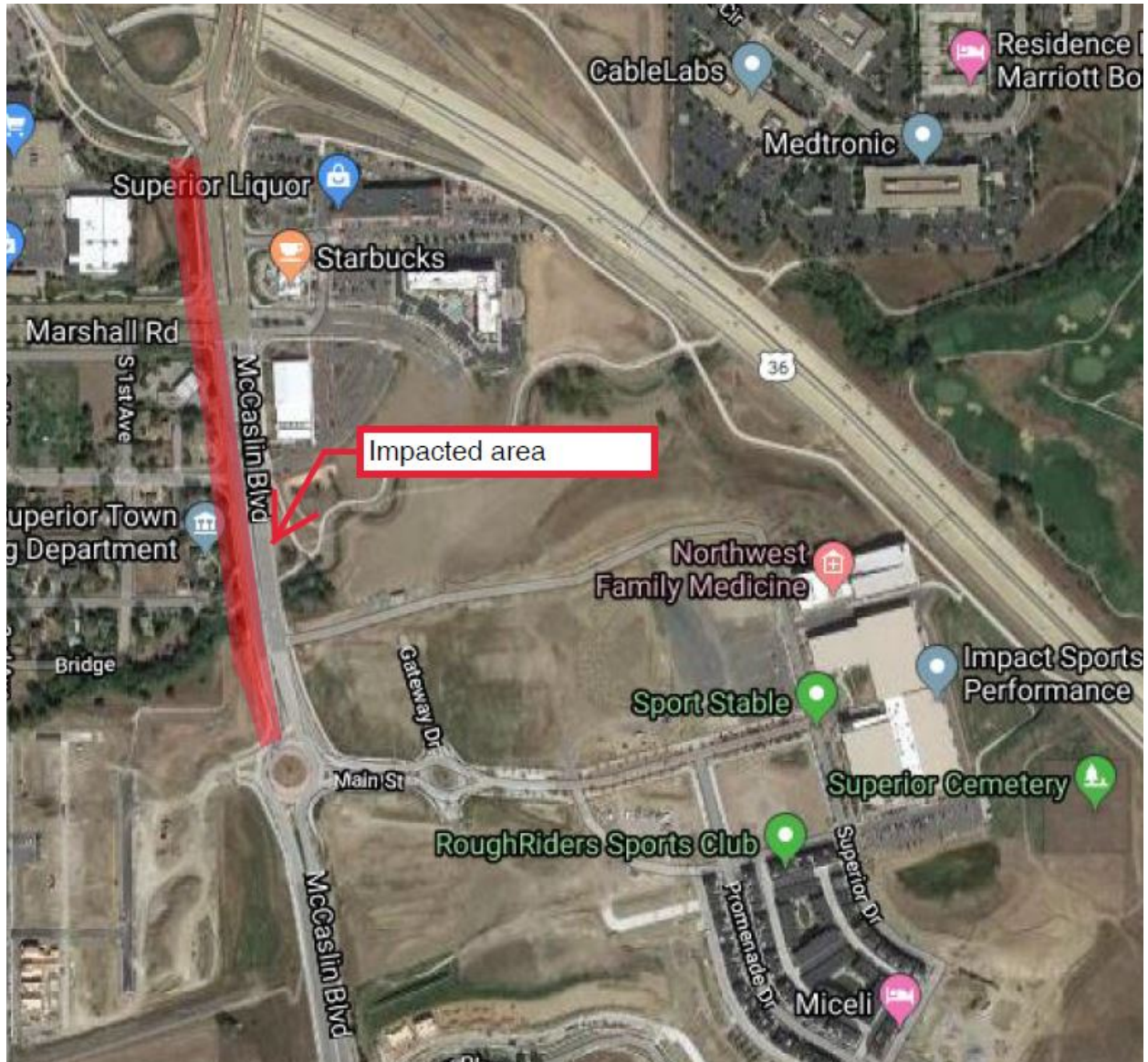


## Downtown Superior Gas Main Reinforcement

Sitewise LLC is installing an 8" gas main along the west side of McCaslin Boulevard between the US 36 Interchange and the Main Street Roundabout. This work is tentatively scheduled to be completed this month, weather permitting. Temporary lane restrictions will be in place on the westernmost southbound lane of McCaslin Boulevard.



## 88<sup>th</sup> Street Reconstruction

Work is expected to ramp up this month on the 88th Street Reconstruction project. Starting the second week in May, 88th Street will be closed from Shamrock Drive north to the US 36 bridge approach. South of Shamrock Drive, 88th Street will be open to local traffic only. Motorists are advised to seek alternate routes. Pedestrian access will be maintained along the west side of 88th Street.

Initial activities will include grading and earthwork along the east side of the roadway and installation of potable water, reuse water, sewer and storm water lines. **The construction work will continue through the fall of 2020.** The limits of the project are between Rock Creek Parkway and the US 36 bridge approach.

