

OCTOBER 2023

EMPLOYMENT SITUATION SUPPLEMENTAL CHARTS

November 17, 2023

This briefing provides information on industry employment and labor force statistics, derived from surveys of business establishments and households. The reference period for these surveys is the pay period or week that includes the 12th of the month. The reference week for October was specifically October 8th – October 14th.

Colorado and U.S. Unemployment Rates Increase Slightly in October

Percent

7

6

5

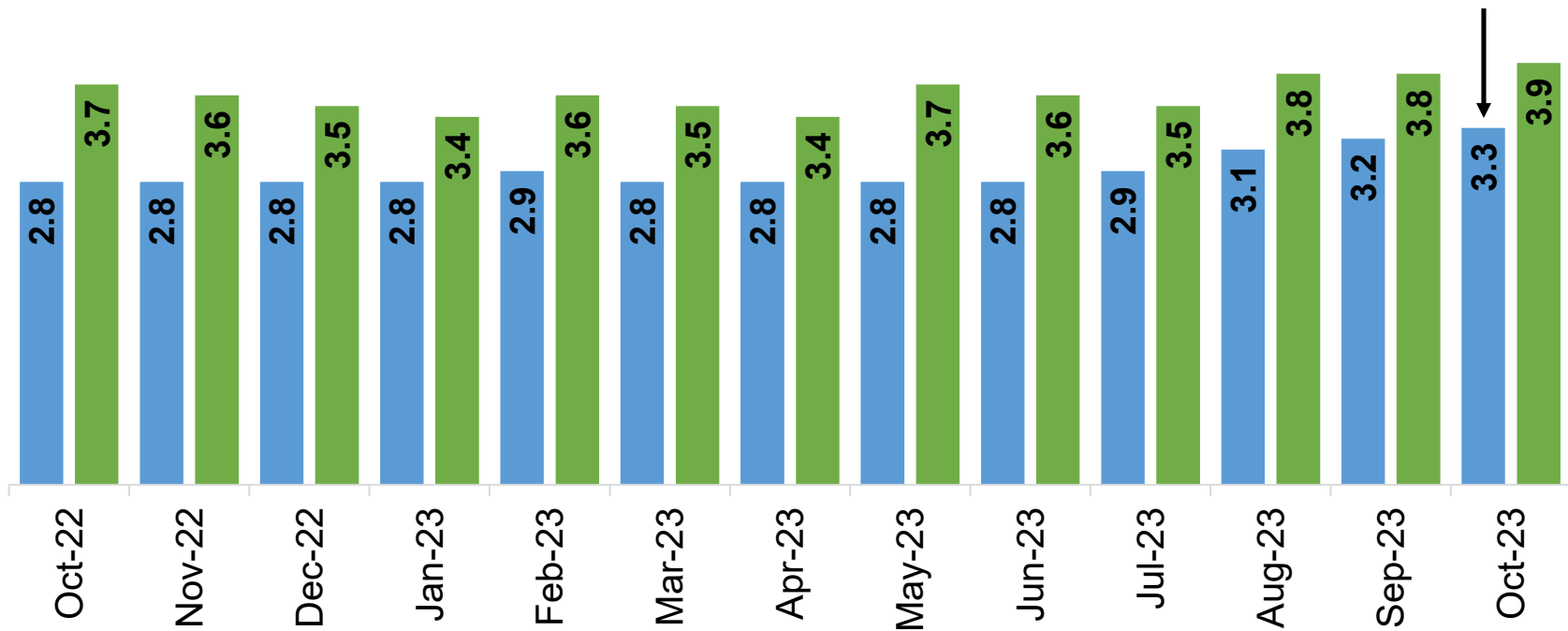
4

3

2

1

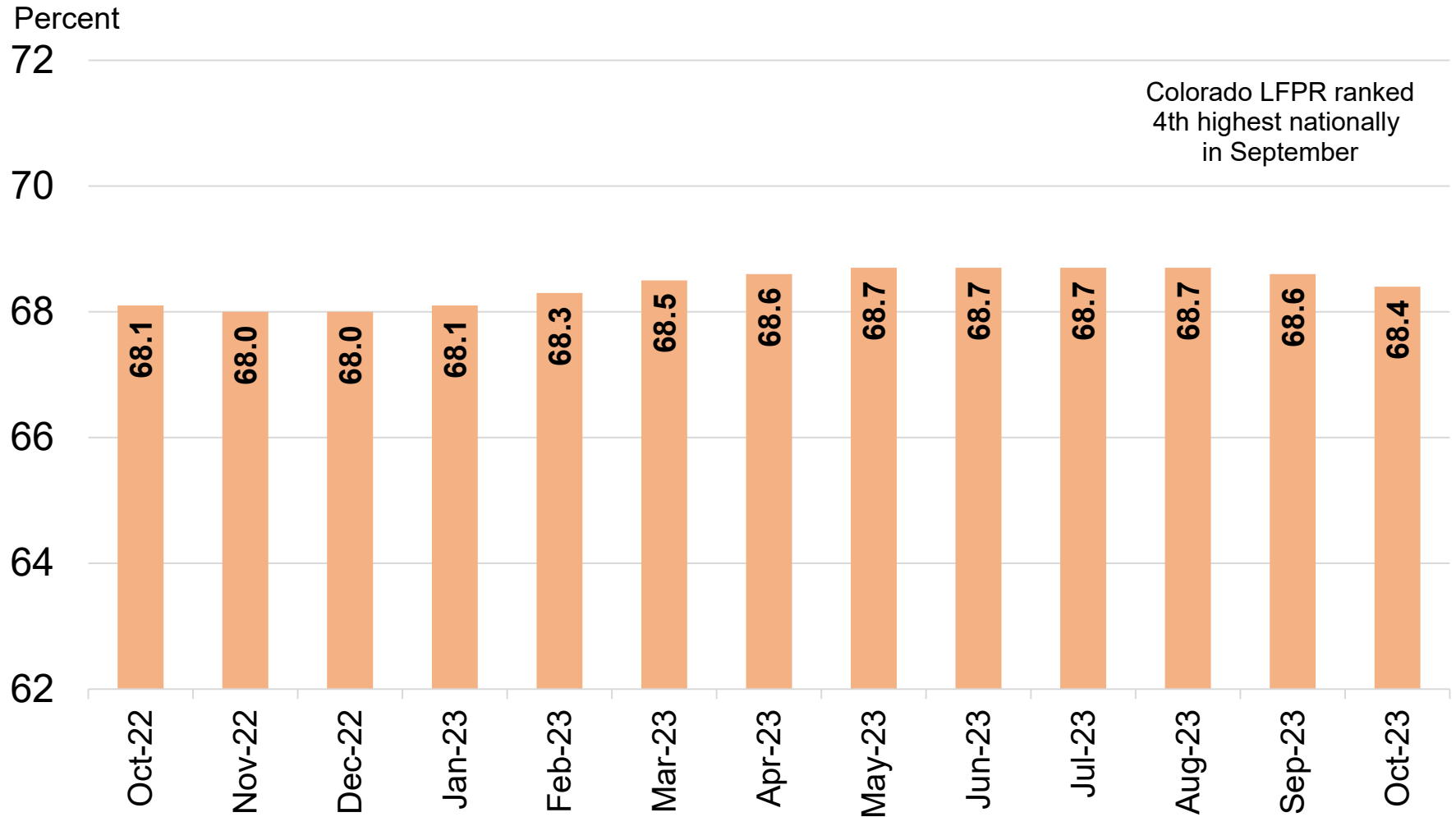
0



Source: Colorado Department of Labor and Employment; Bureau of Labor Statistics
Data seasonally adjusted

■ Colorado ■ U.S.

Colorado's Labor Force Participation Rate Declines to 68.4 Percent in October



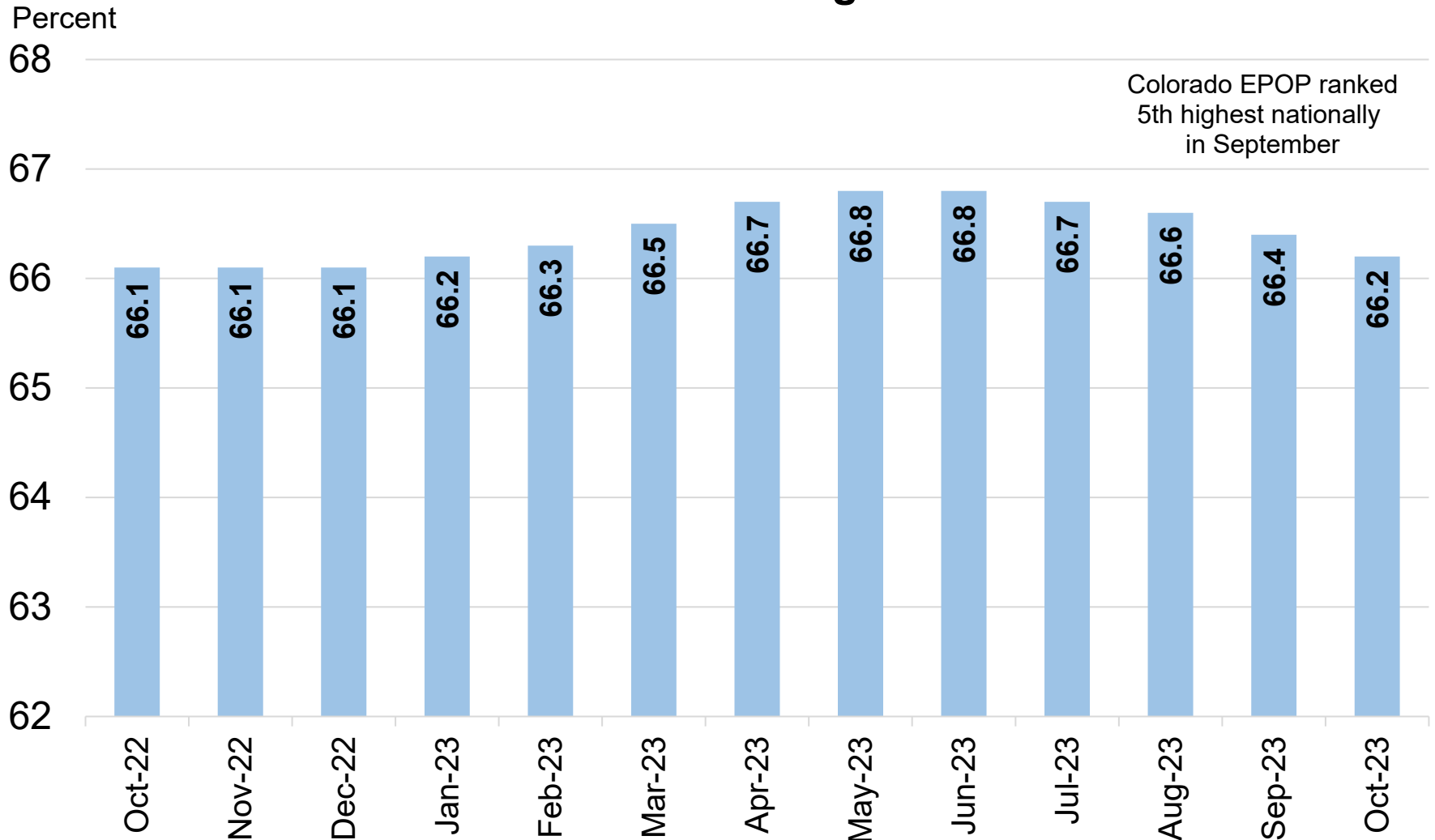
Source: Colorado Department of Labor and Employment; Bureau of Labor Statistics

Data seasonally adjusted. Estimates share of Colorado's 16+ population that is in the labor force in a given month.

February 2020 rate was 68.8 percent.

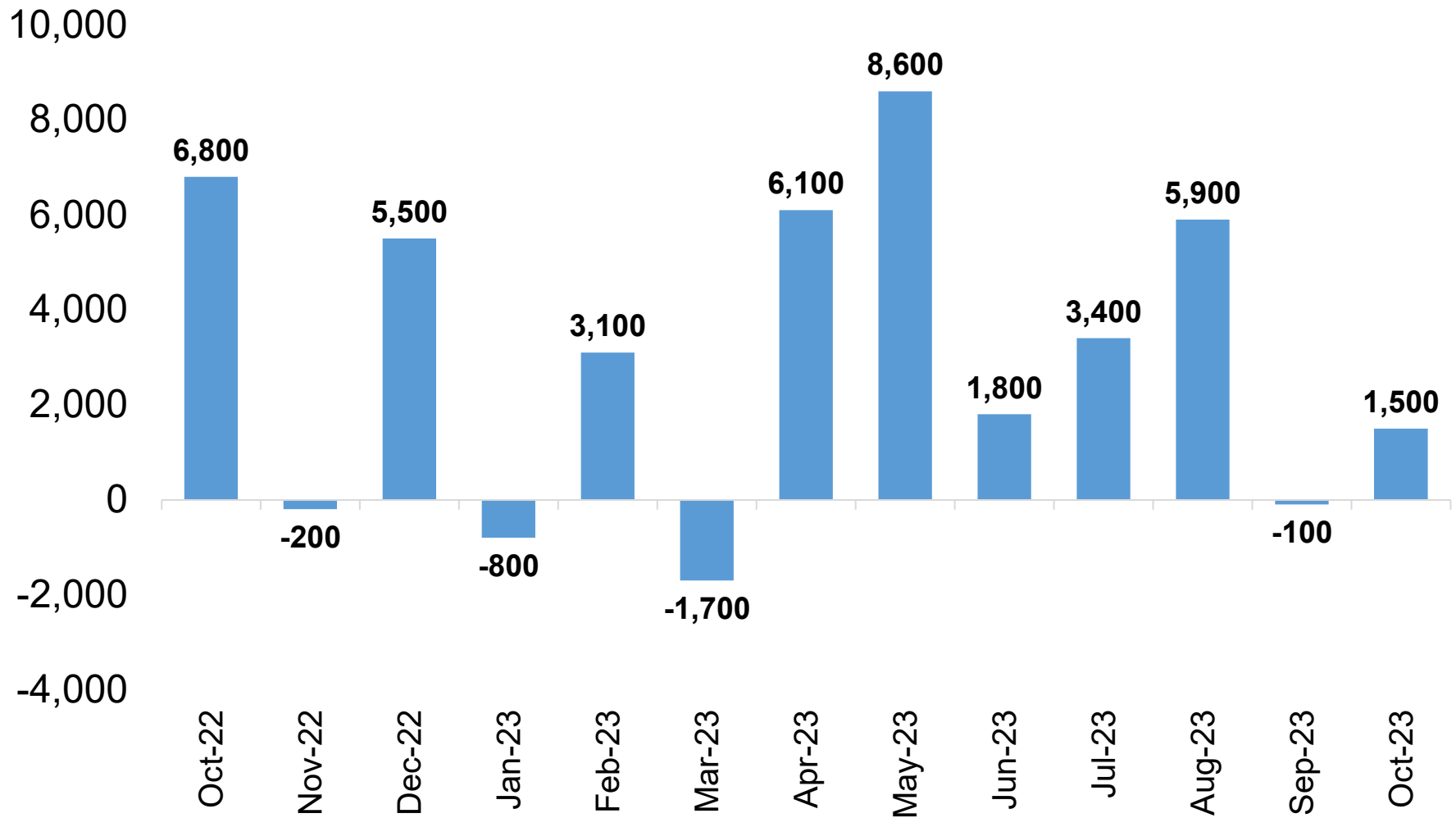
For further information on labor force definitions, go here: <https://www.bls.gov/lau/laufaq.htm>

Colorado's Employment-Population Ratio Falls Two-Tenths of a Percentage Point in October



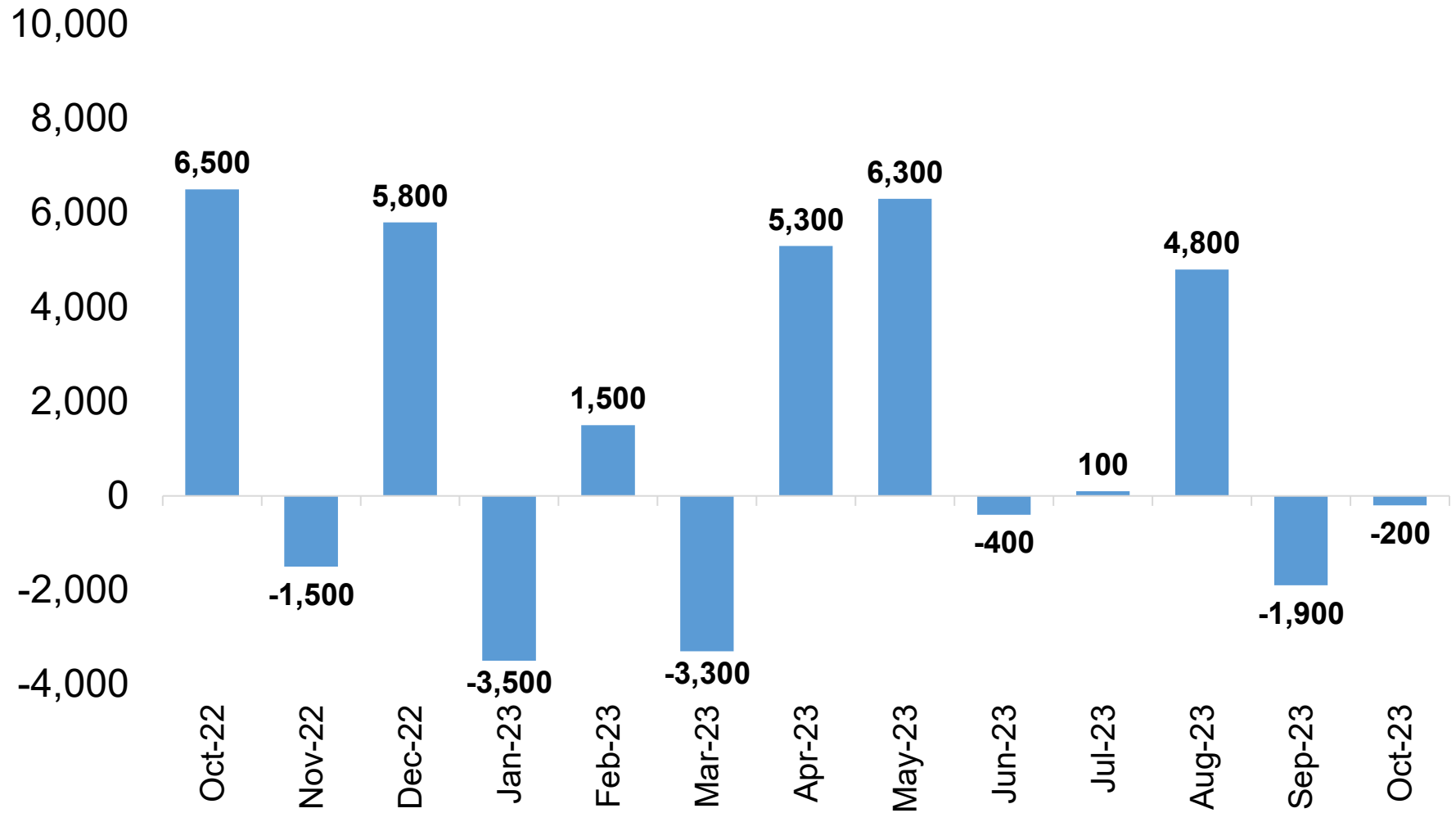
Source: Colorado Department of Labor and Employment; Bureau of Labor Statistics
Data seasonally adjusted. Estimates share of Colorado's 16+ population that is employed in a given month.
February 2020 rate was 66.6 percent.

Colorado Added 1,500 Total Nonfarm Jobs in October; September Numbers Revised Down 1,600



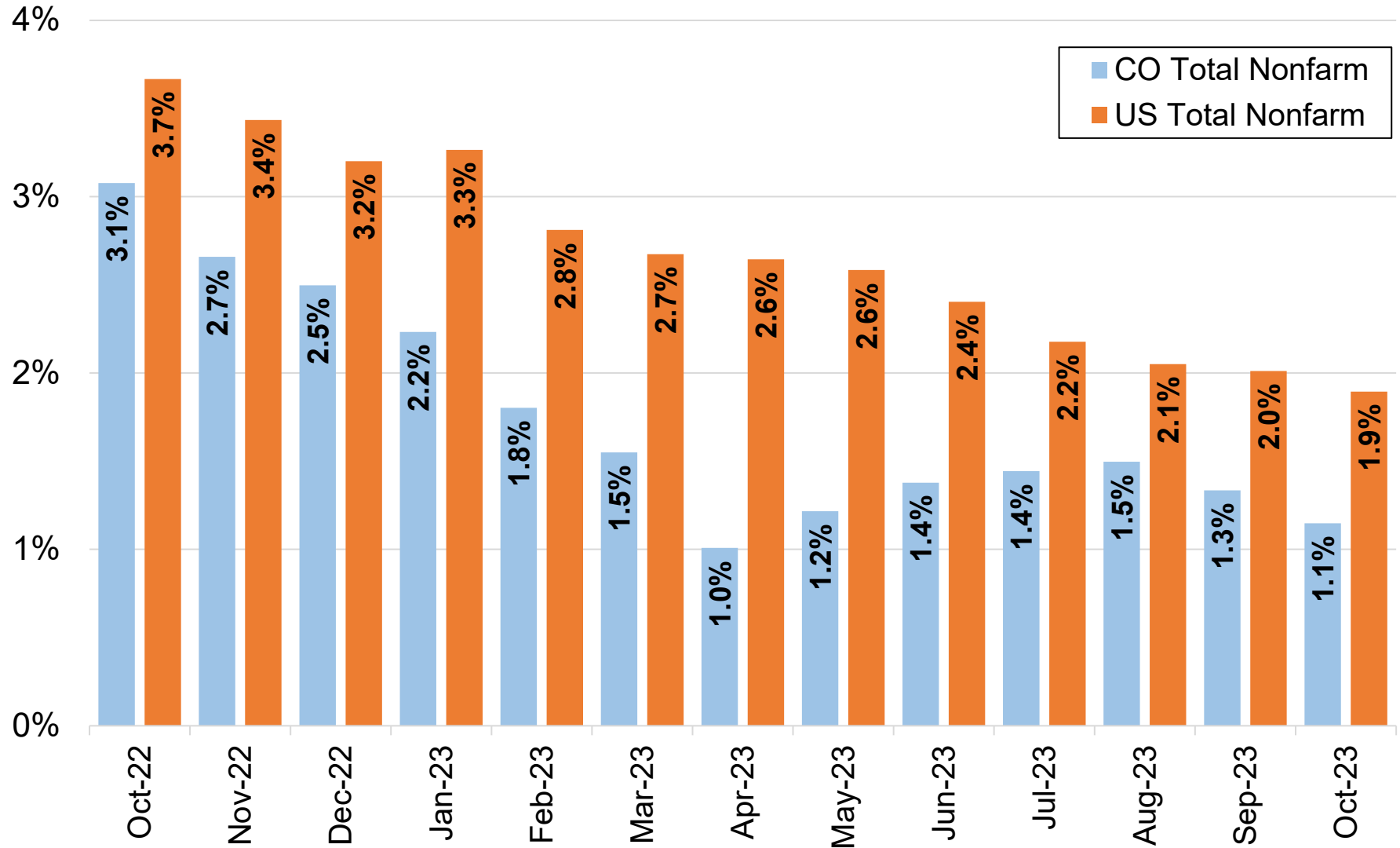
Source: Colorado Department of Labor and Employment; Bureau of Labor Statistics
Data seasonally adjusted

Private Sector Jobs Decline by 200 in October; September Figures Revised Down 1,300



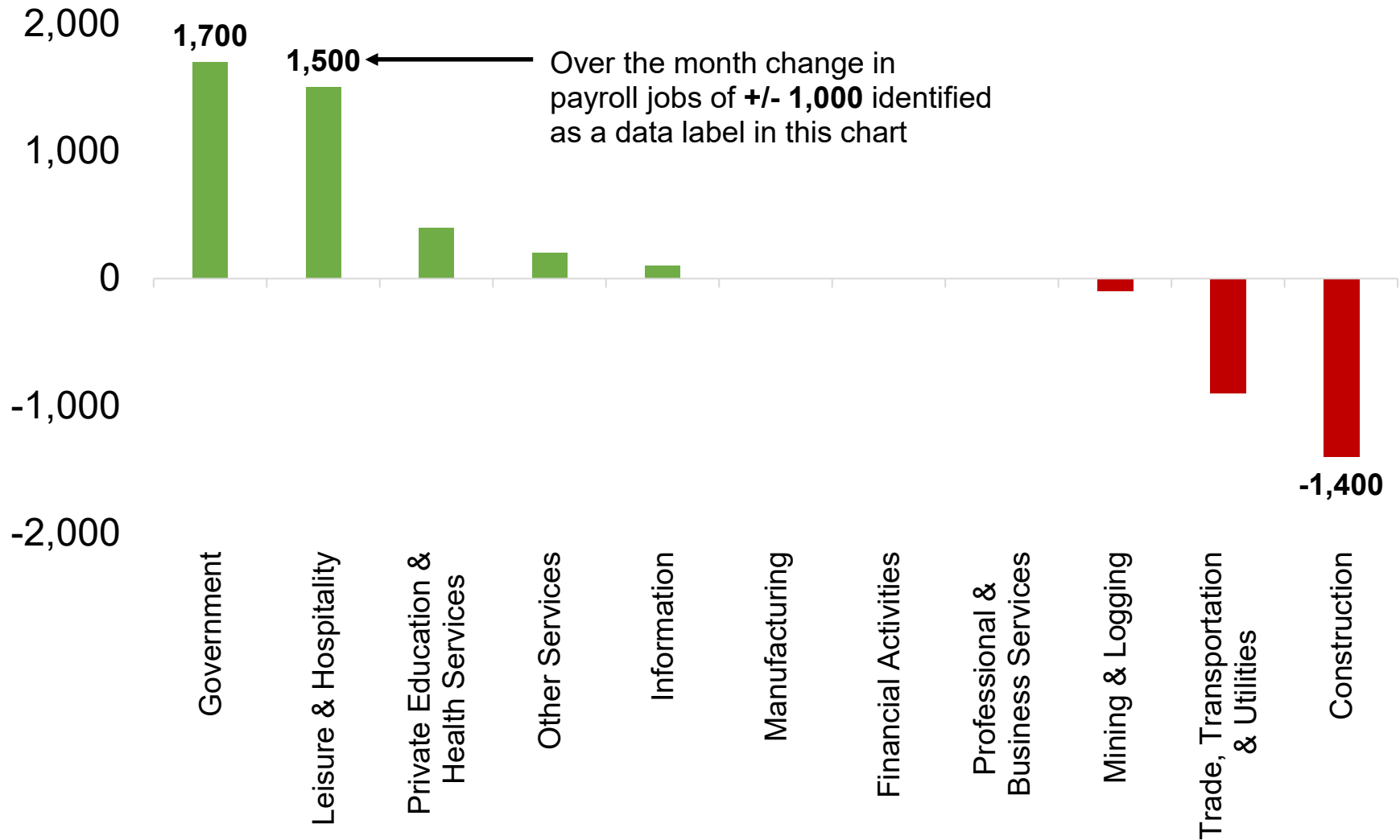
Source: Colorado Department of Labor and Employment; Bureau of Labor Statistics
Data seasonally adjusted

Colorado and U.S. Over the Year Growth Rates for Total Nonfarm Employment



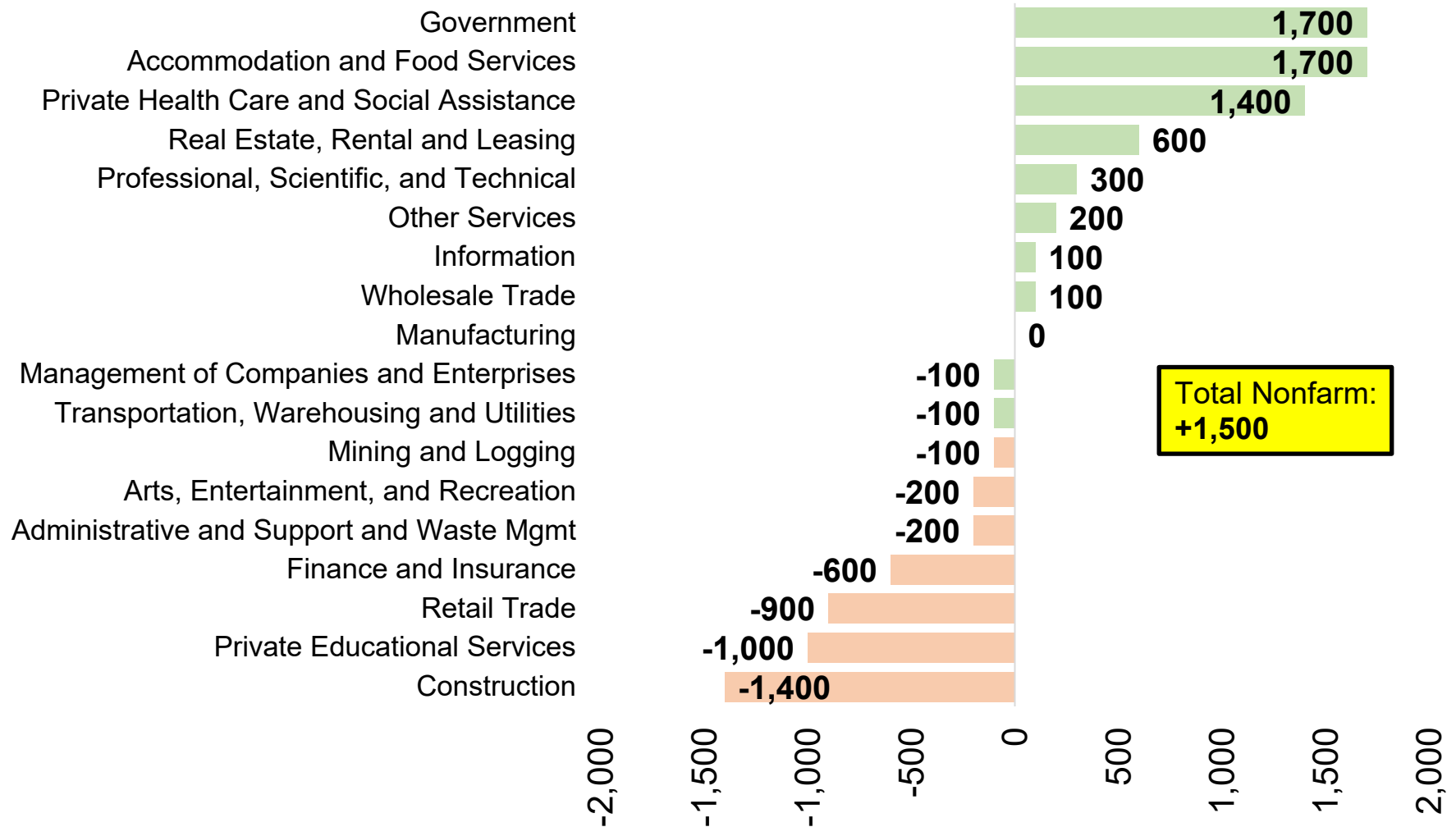
Source: Colorado Department of Labor and Employment; Bureau of Labor Statistics
Data seasonally adjusted

Government with Most Jobs Added in October, While Construction Led with Largest Decline



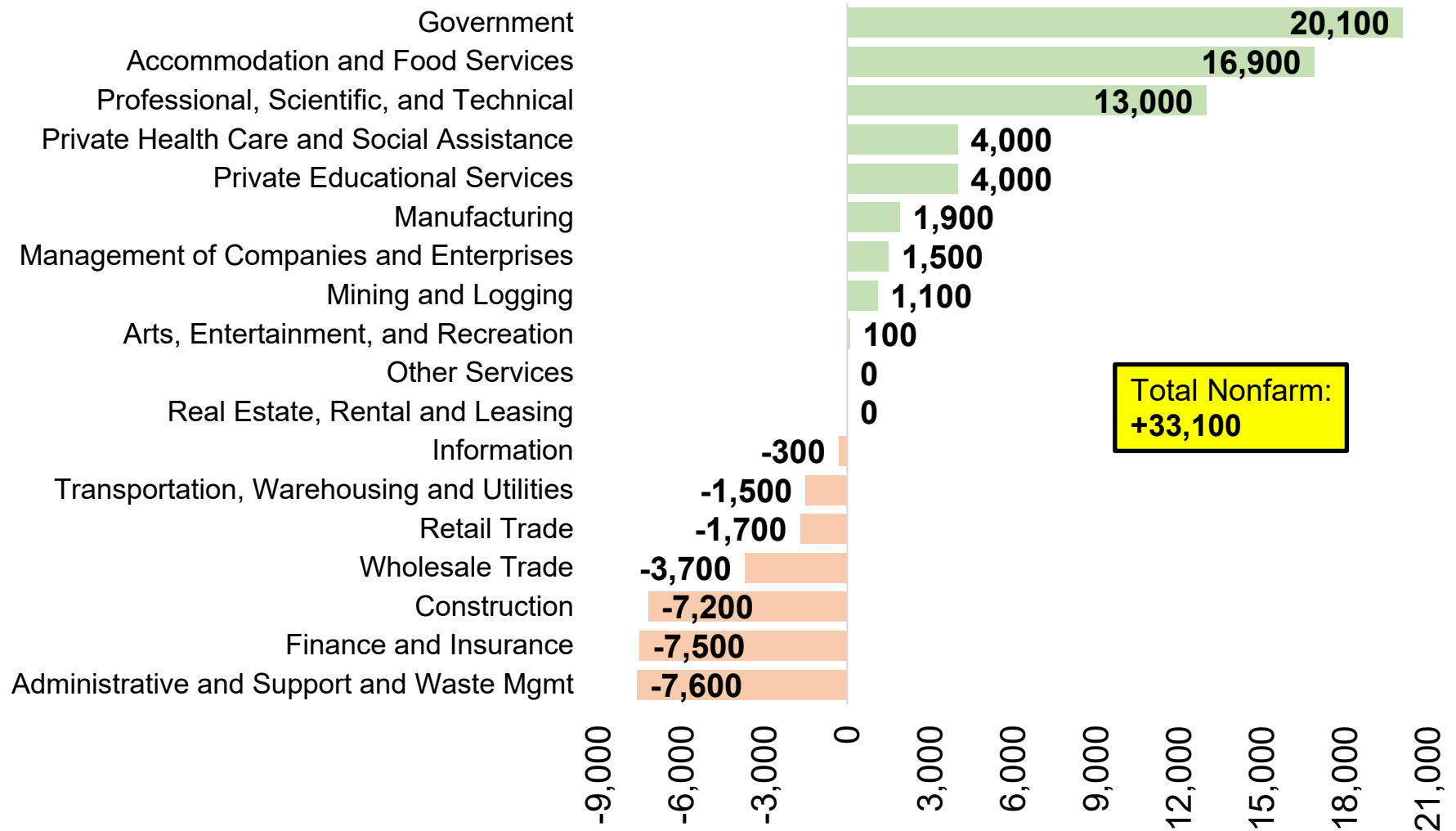
Source: Colorado Department of Labor and Employment; Bureau of Labor Statistics
Data seasonally adjusted

Change in Payroll Jobs in October 2023, by Industry Sector



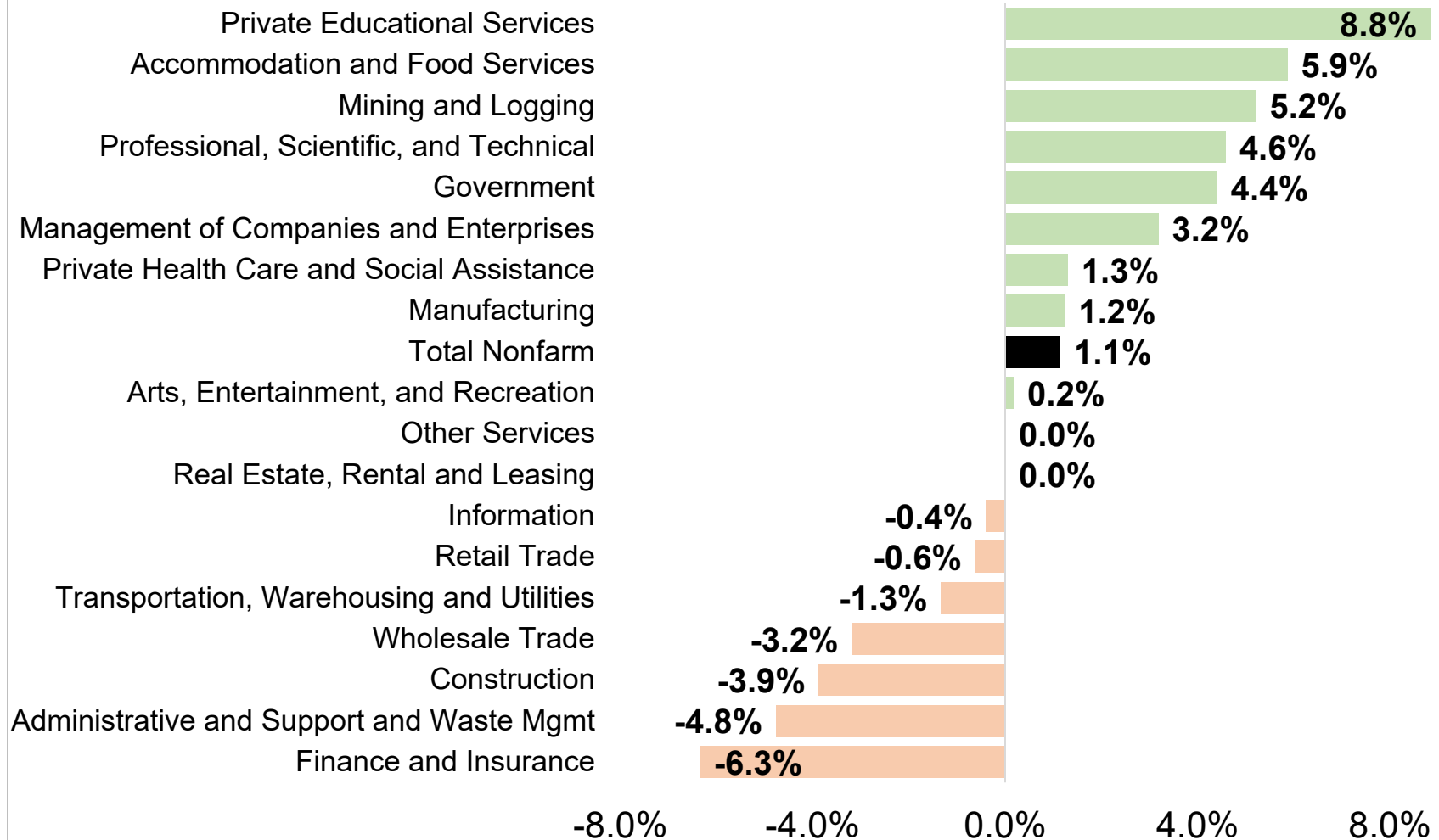
Source: Colorado Department of Labor and Employment; Bureau of Labor Statistics
Data seasonally adjusted, September 2023 to October 2023

Change in Payroll Jobs Over Past 12 Months, by Industry Sector



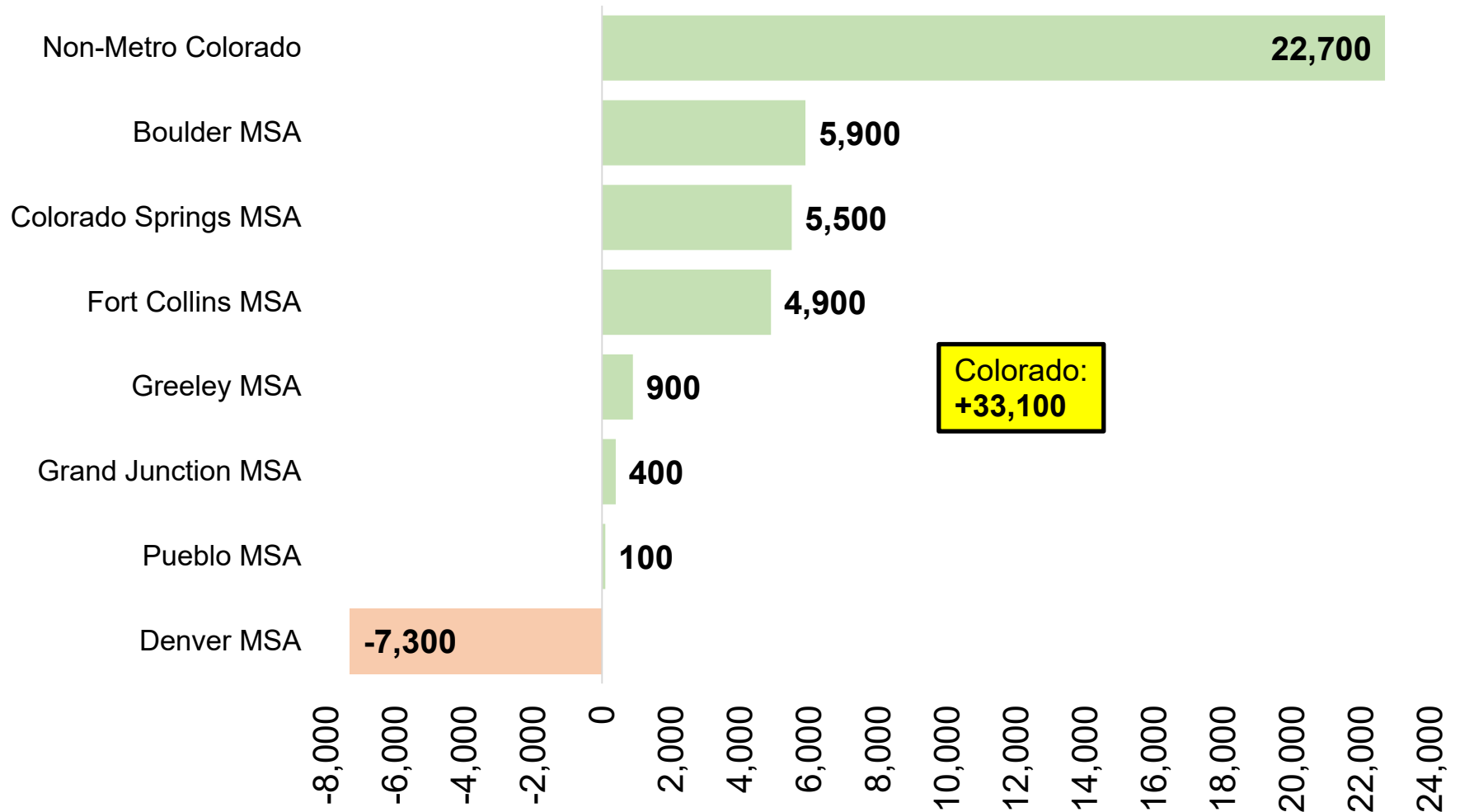
Source: Colorado Department of Labor and Employment; Bureau of Labor Statistics
Data seasonally adjusted, October 2022 to October 2023

October 2023 Over the Year Growth Rates, by Industry Sector



Source: Colorado Department of Labor and Employment; Bureau of Labor Statistics
Data seasonally adjusted, October 2022 to October 2023

Change in Payroll Jobs Over Past 12 Months, by Colorado Substate Area

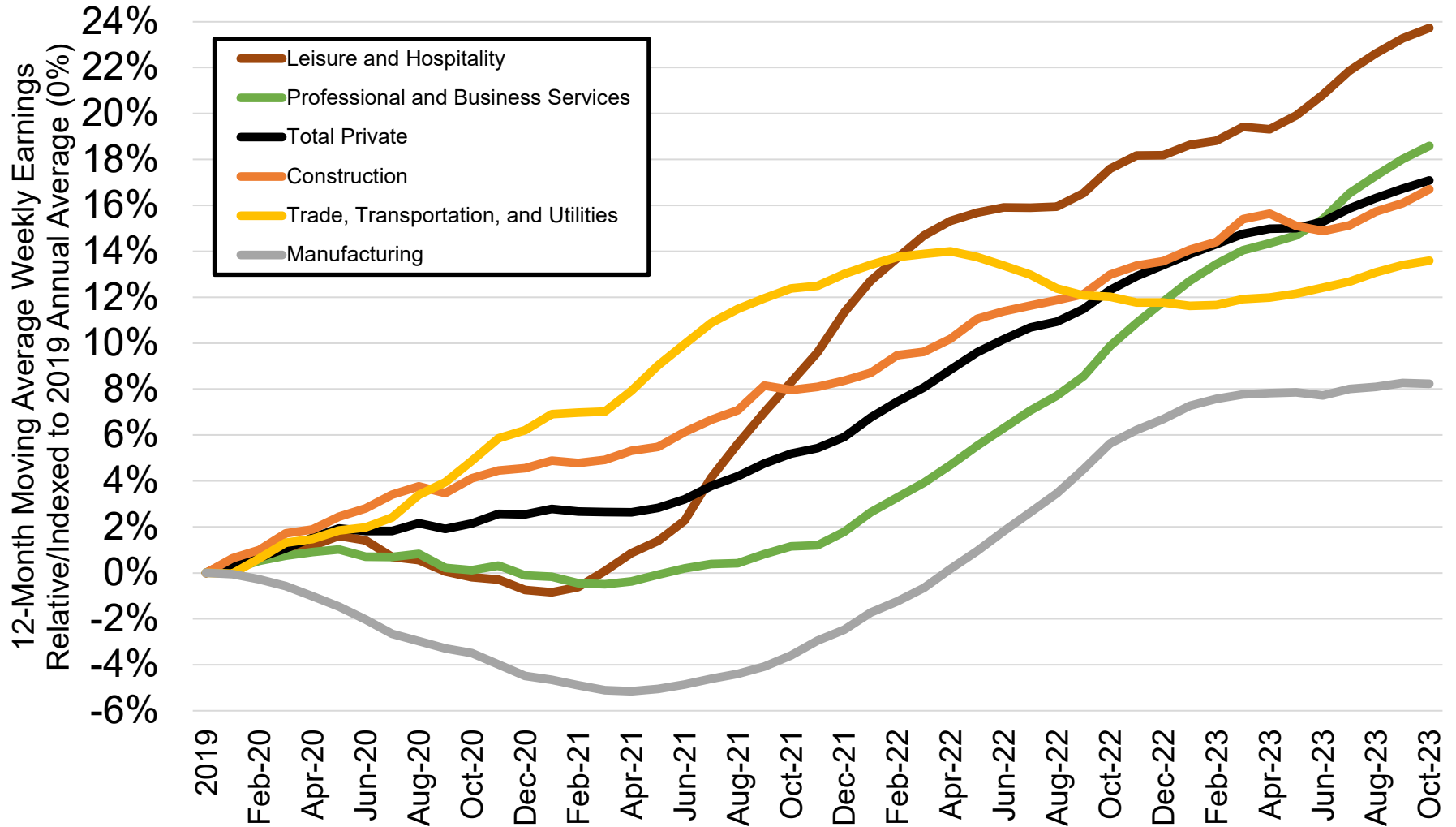


Source: Colorado Department of Labor and Employment; Bureau of Labor Statistics

Data seasonally adjusted, October 2022 to October 2023

Note: MSA = Metropolitan Statistical Area; Non-Metro Colorado = residual of state that is not an MSA (47 counties)

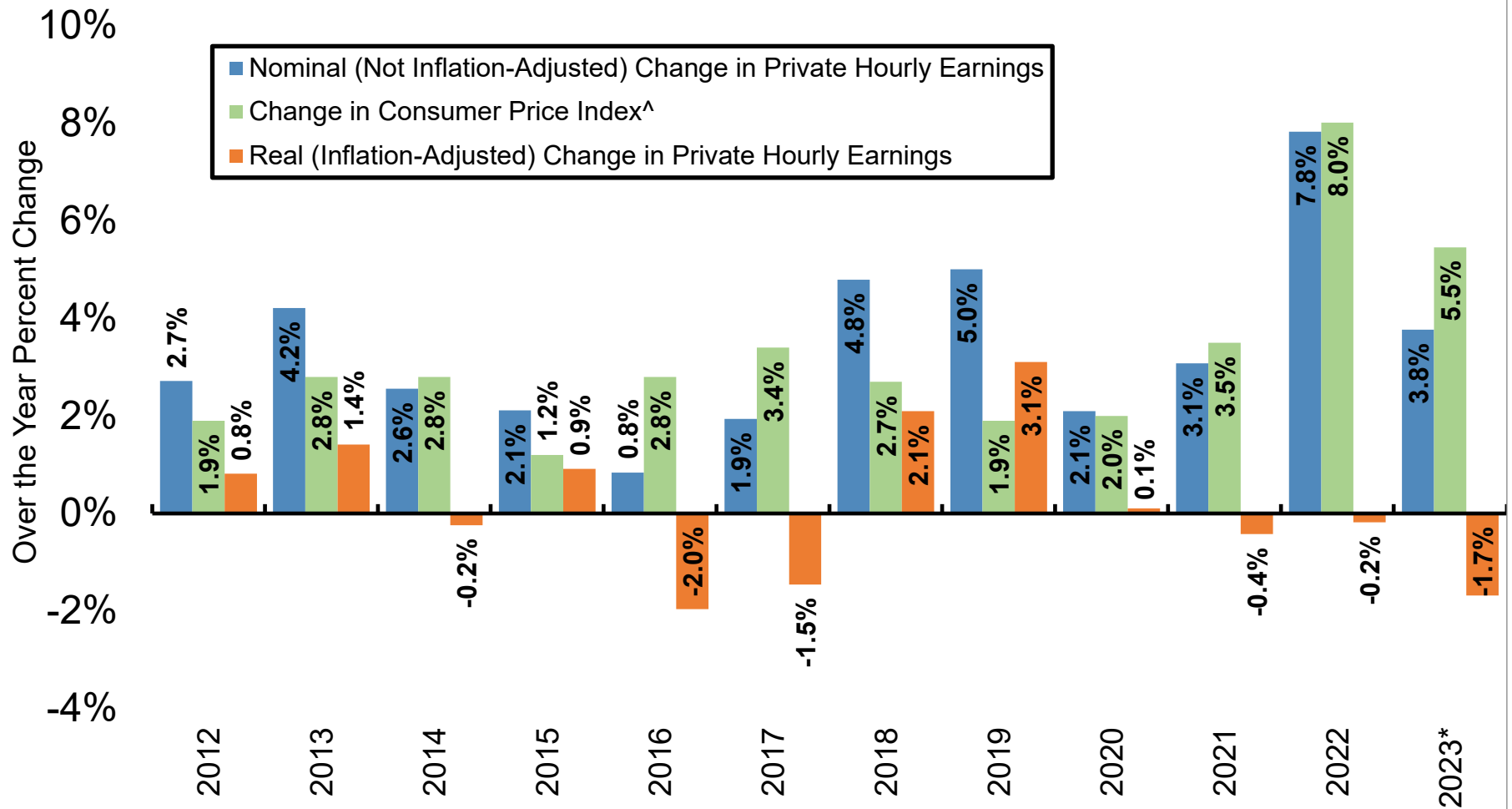
Percent Change in Average Weekly Earnings Since 2019, by Select Colorado Industry



Source: Colorado Department of Labor and Employment; Bureau of Labor Statistics

Data not seasonally adjusted. Note: each month on this chart represents a 12-month moving average and measures the percent change in average weekly earnings compared to the 2019 annual average for that industry.

Nominal and Real Percent Change in Colorado's Private Average Hourly Earnings Since 2012

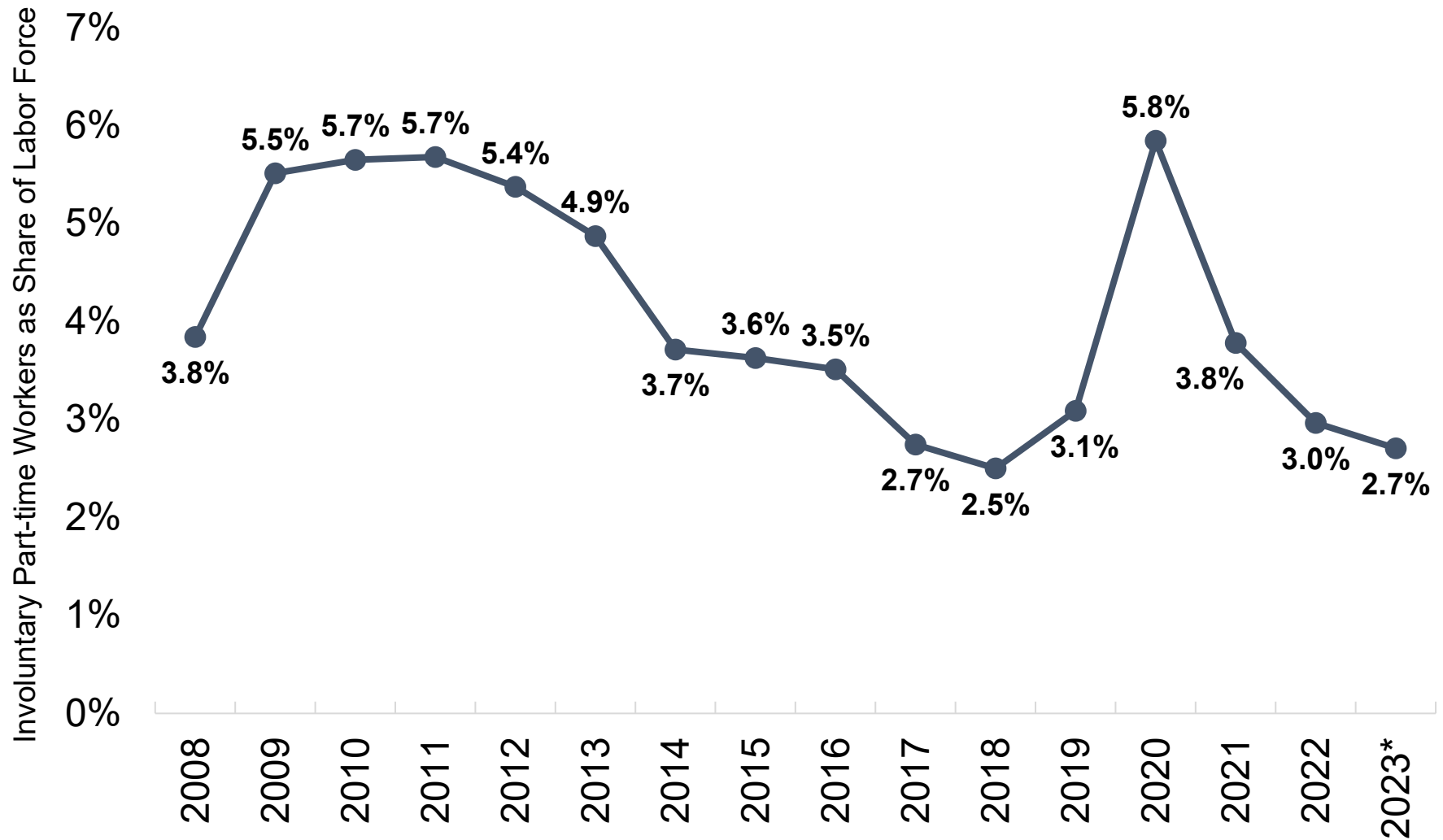


Source: Colorado Department of Labor and Employment estimates; Bureau of Labor Statistics

[^]Note: Denver-Aurora-Lakewood CPI-U estimates were utilized to adjust average hourly earnings for inflation.

That data is available here: <https://www.bls.gov/cpi/regional-resources.htm>. *2023 nominal earnings growth is measured using data for January to October compared to the same period the year prior, while real earnings were adjusted using the average over-the-year change in CPI-U for January, March, May, July, and September 2023.

Involuntary Part-Time Workers as Share of Labor Force

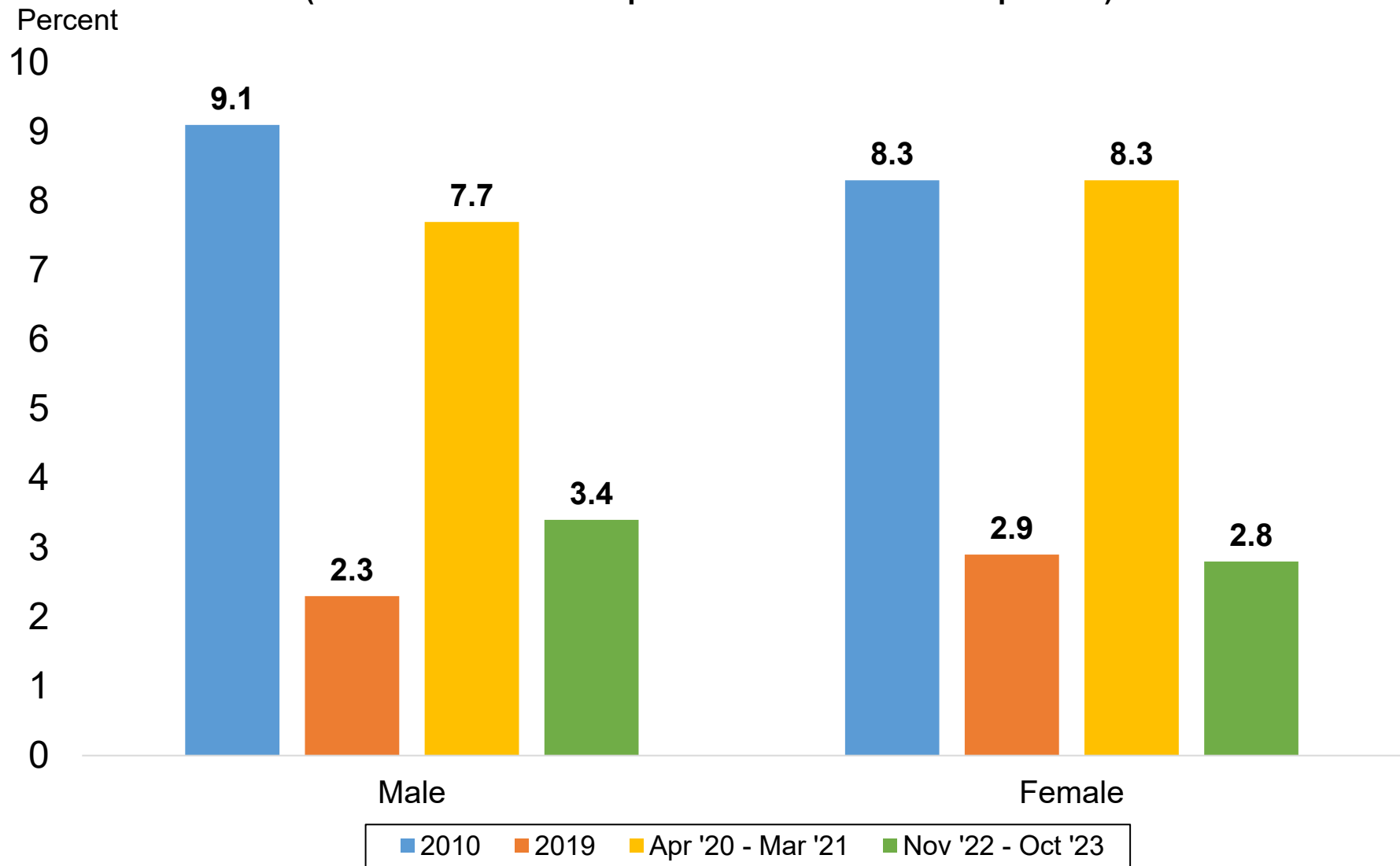


Source: Current Population Survey

Data not seasonally adjusted. Involuntary part-time workers are those individuals who are working part-time hours (34 hours or less), but prefer full-time hours (35+ hours).

*Average through the first ten months of 2023.

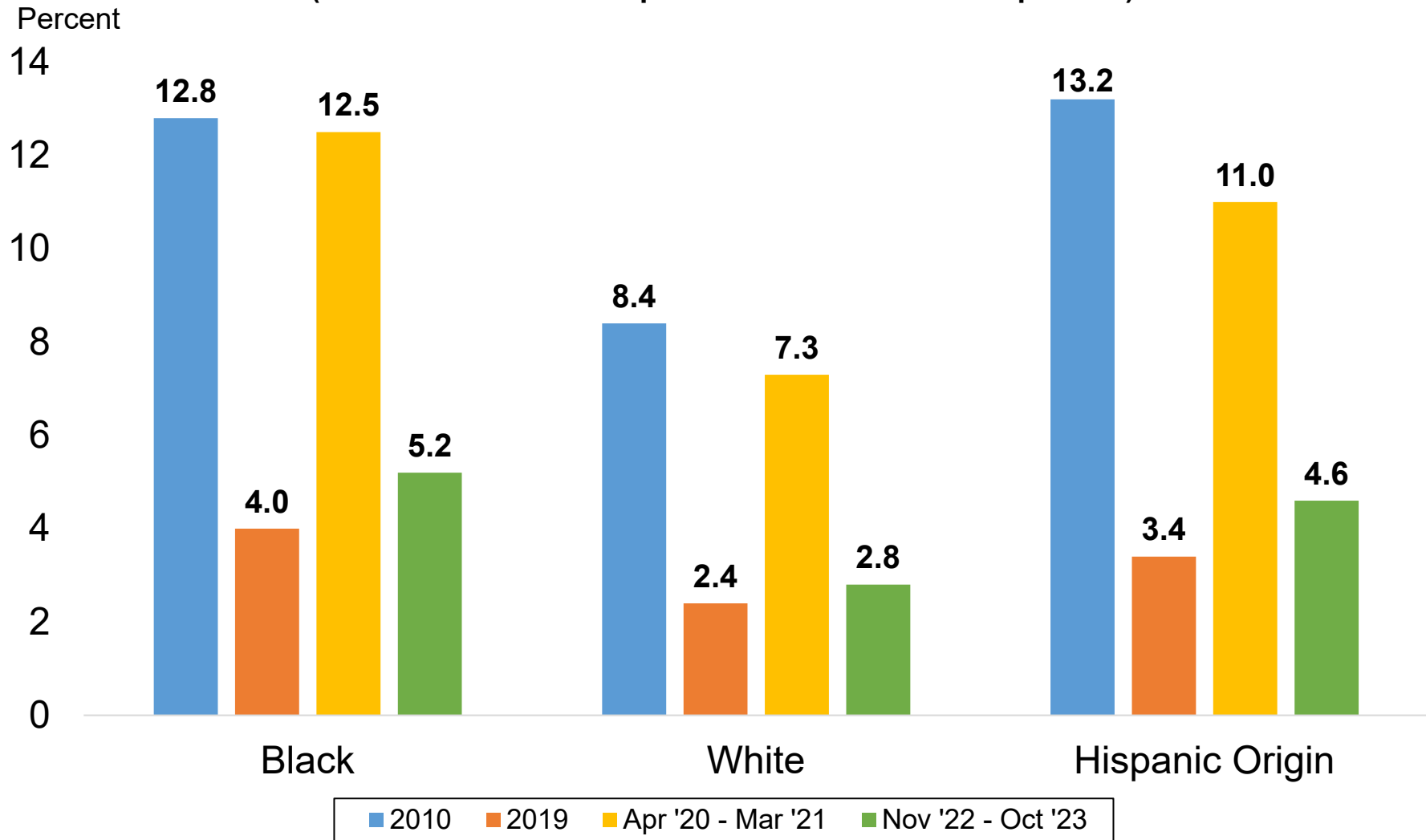
Unemployment Rates by Gender (Most recent 12-month period available vs. select periods)



Source: Current Population Survey

Data not seasonally adjusted. Unemployment rates by gender for individuals 16 years and older.

Unemployment Rates by Race & Ethnicity (Most recent 12-month period available vs. select periods)

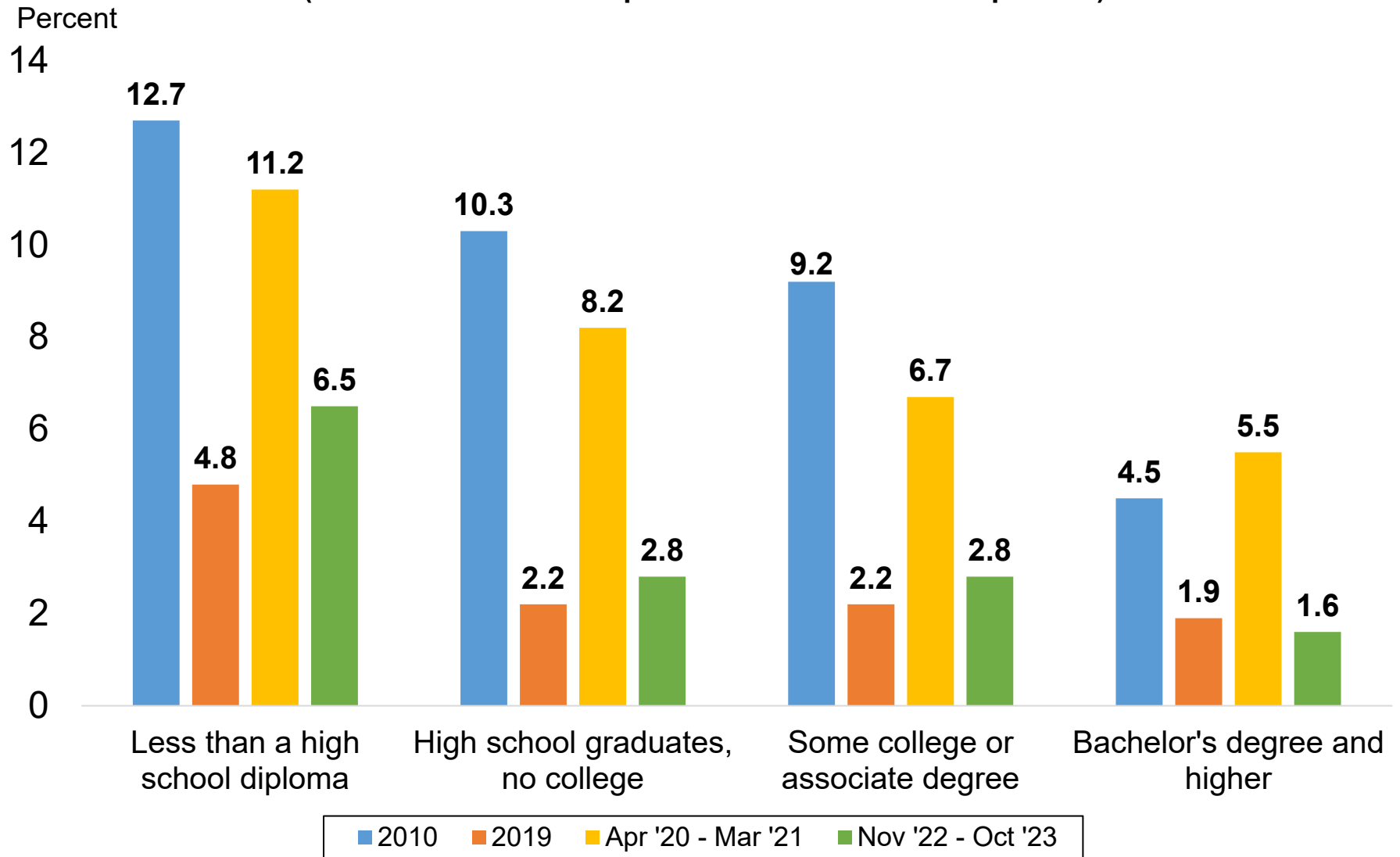


Source: Current Population Survey

Data not seasonally adjusted. Other race categories excluded due to small sample size. Hispanic origin category is not mutually exclusive (i.e. hispanic and non-hispanic ethnicities are represented in both race categories).

Unemployment Rates by Educational Attainment

(Most recent 12-month period available vs. select periods)

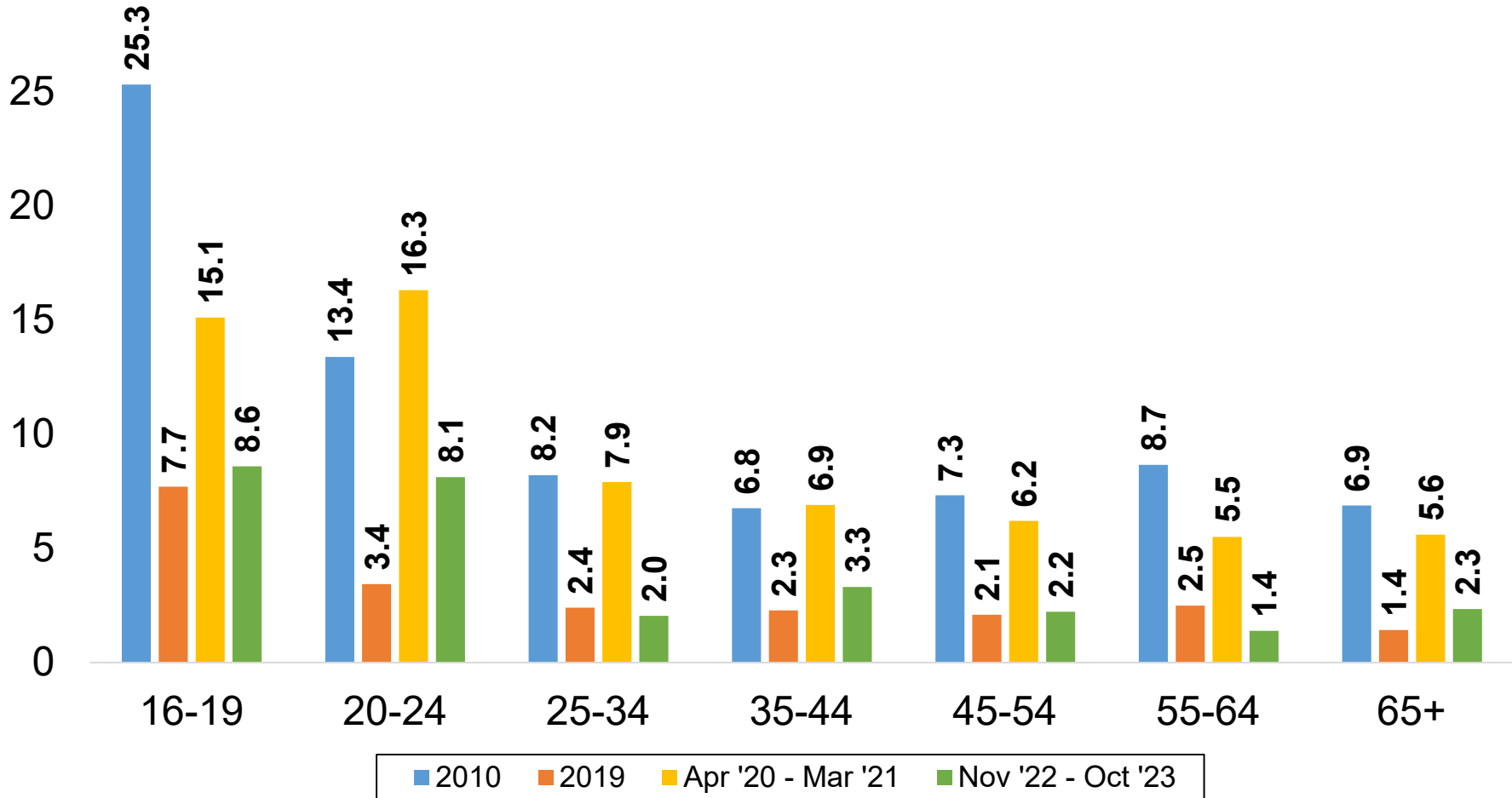


Source: Current Population Survey

Data not seasonally adjusted. Unemployment rates by educational attainment for individuals 25 years and over.

Unemployment Rates by Age Group (Most recent 12-month period available vs. select periods)

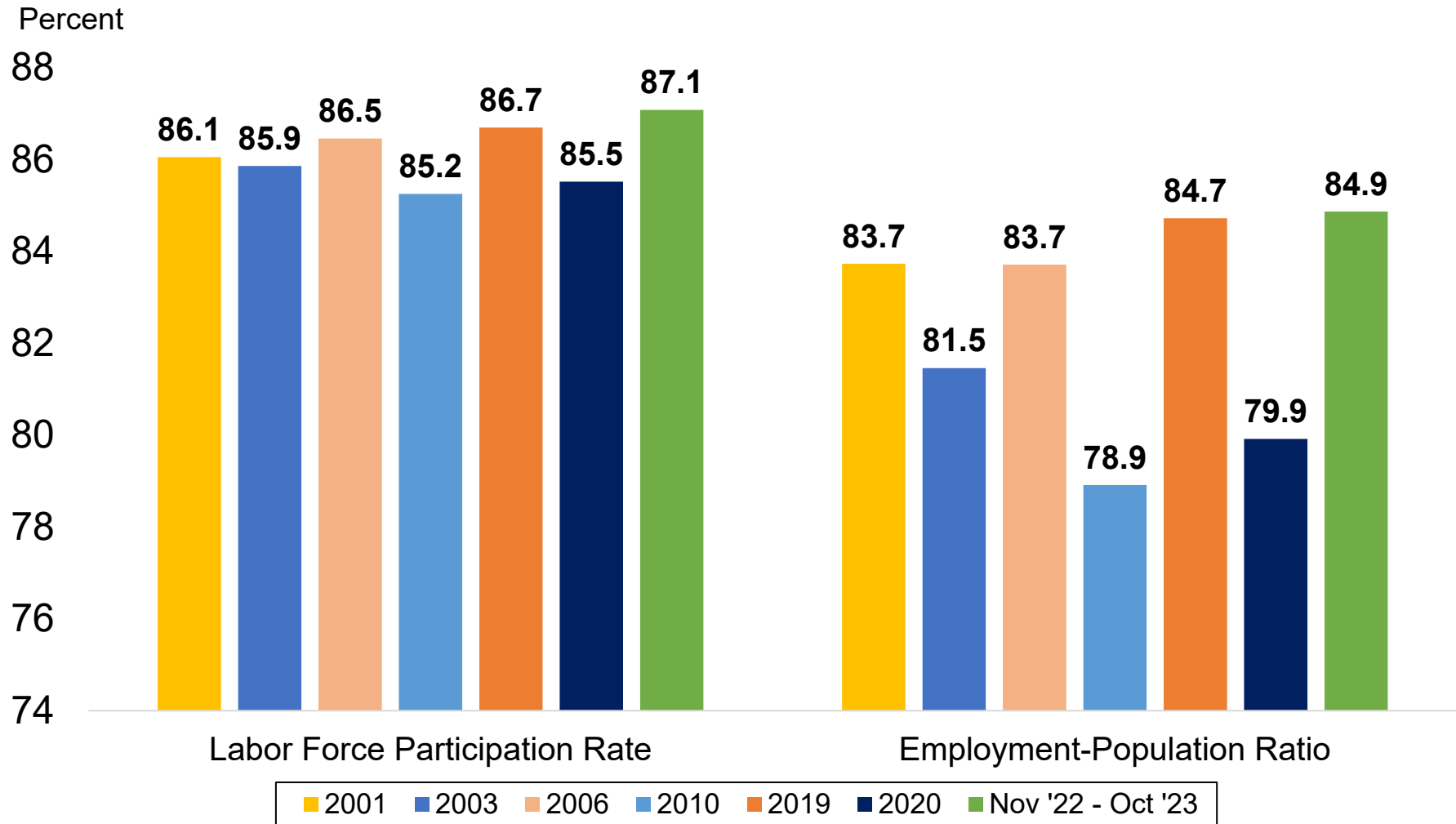
Percent
30



Source: Current Population Survey
Data not seasonally adjusted.

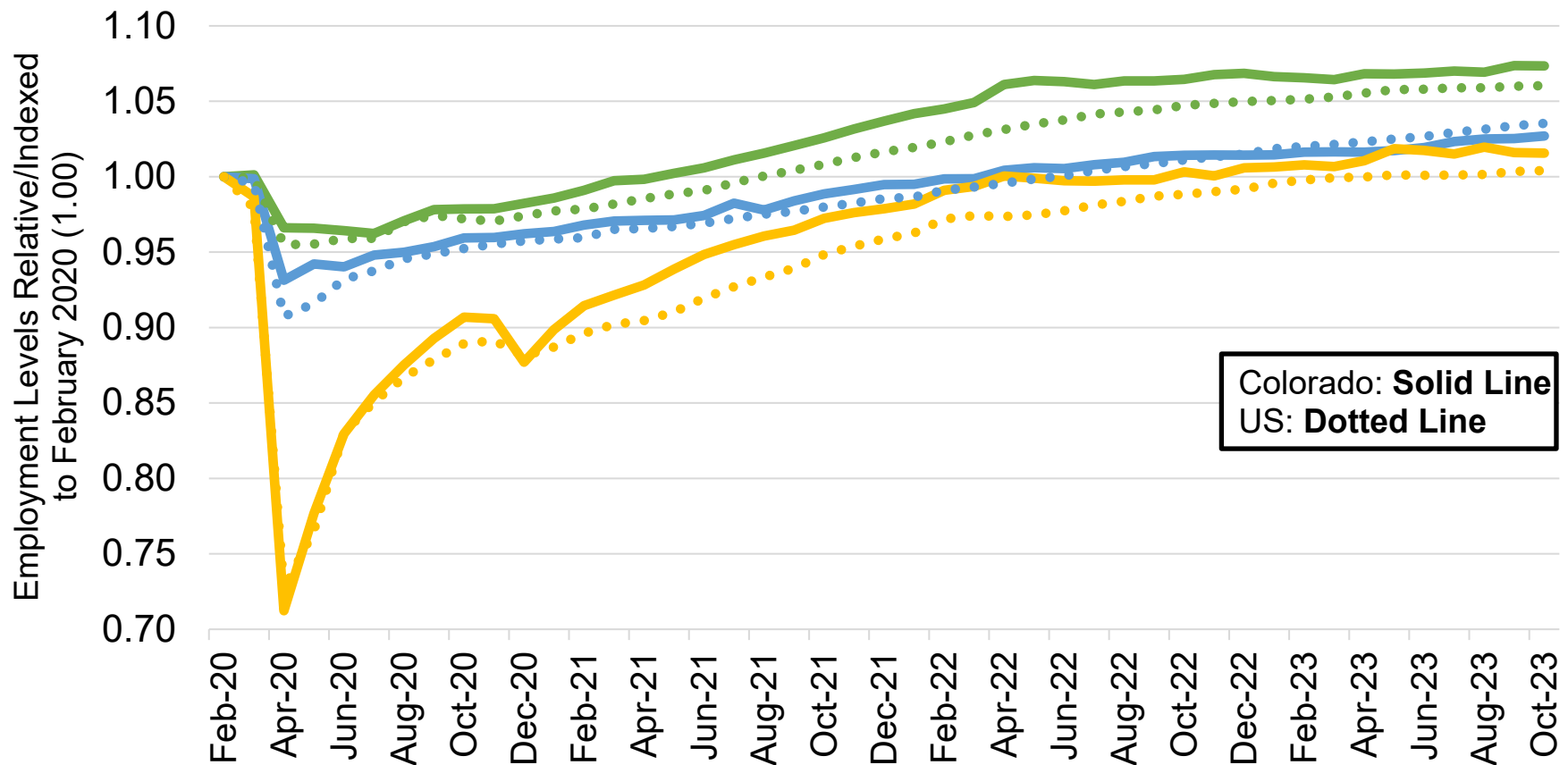
Colorado Labor Force Participation Rates and Employment-Population Ratios, Ages 25 to 54

(Most recent 12-month period available vs. select years)



Source: Current Population Survey
Data not seasonally adjusted.

Job Loss and Recovery by Low, Medium, and High Wage Industries (Colorado & U.S.)

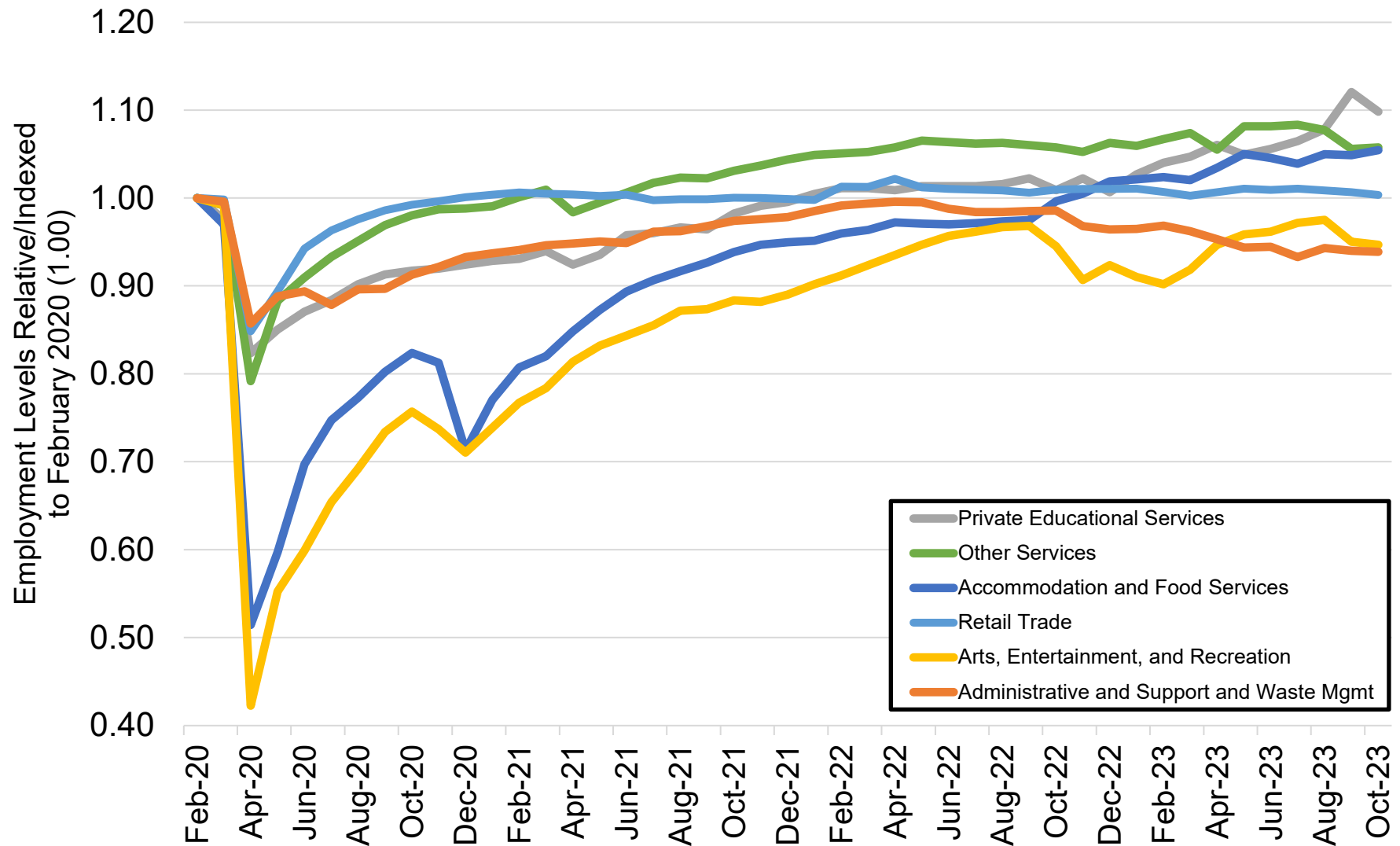


Source: Colorado Department of Labor and Employment; Bureau of Labor Statistics

Data seasonally adjusted. Note: low, medium, and high wage industries are determined by the 2019 state-level average weekly wage estimates from the Quarterly Census of Employment and Wages. **Low wage industries include:** retail trade; admin support/waste mgmt; private education services; arts, entertainment, and recreation; accommodation and food services; and other services. **Medium wage industries include:** construction; manufacturing; transportation, warehousing, and utilities; real estate, rental, and leasing; private health care and social assistance; state government; and local government.

High wage industries include: mining and logging; wholesale trade; information; finance and insurance; professional and technical services; management of companies; and federal government.

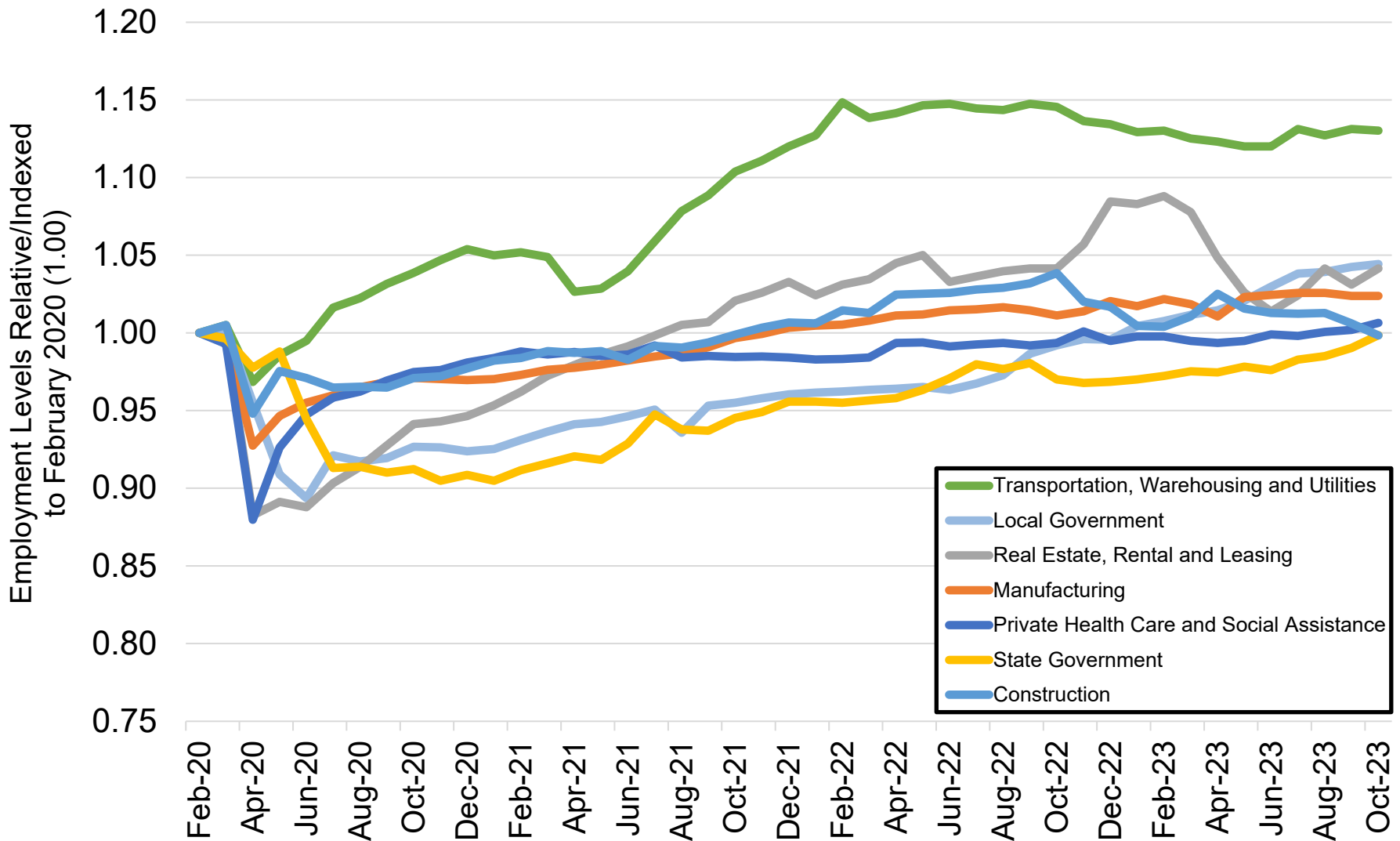
Colorado Job Loss & Recovery by Low Wage Industries



Source: Colorado Department of Labor and Employment; Bureau of Labor Statistics

Data seasonally adjusted. Note: low wage industries are determined by the 2019 state-level average weekly wage estimates from the Quarterly Census of Employment and Wages.

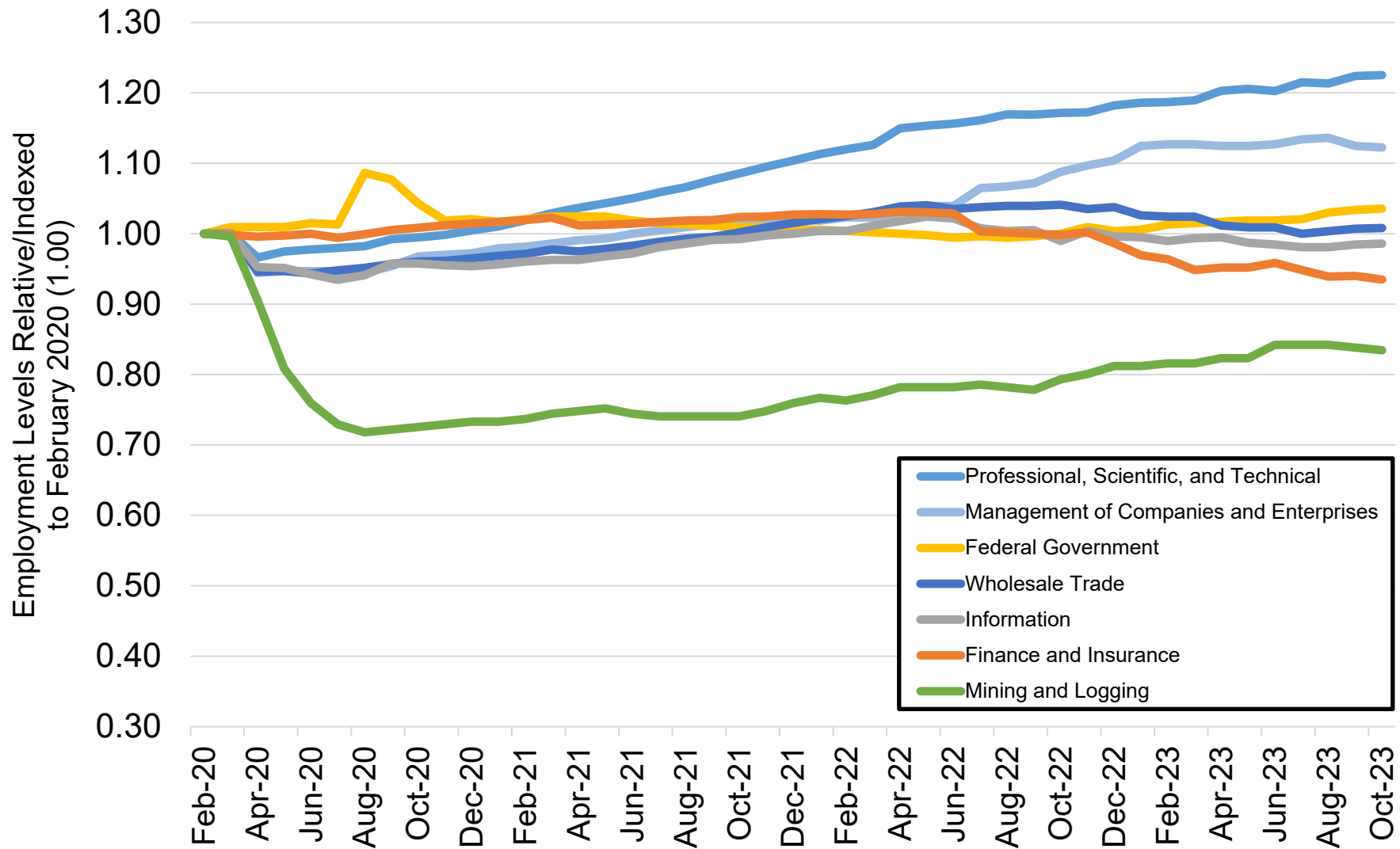
Colorado Job Loss & Recovery by Medium Wage Industries



Source: Colorado Department of Labor and Employment; Bureau of Labor Statistics

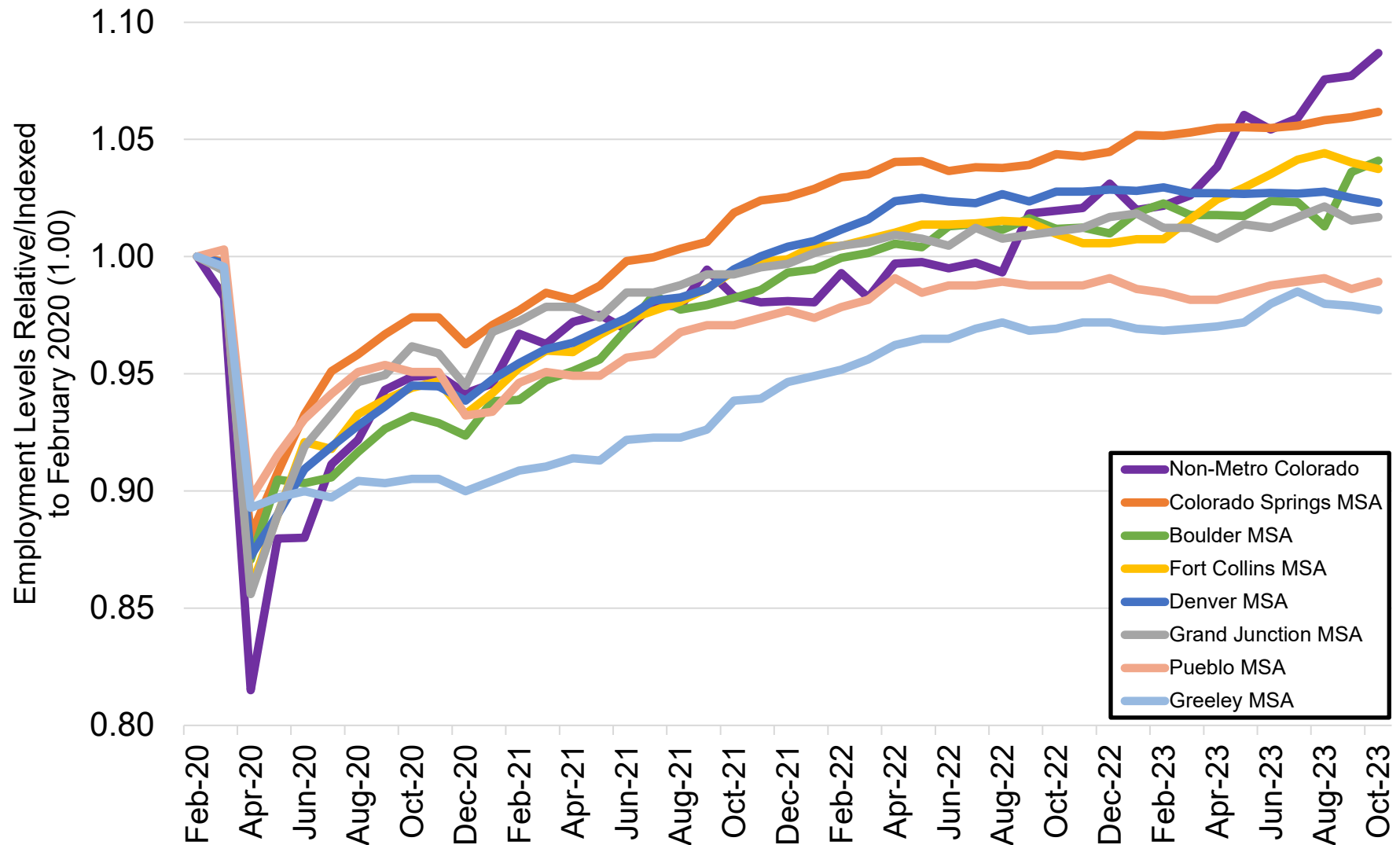
Data seasonally adjusted. Note: medium wage industries are determined by the 2019 state-level average weekly wage estimates from the Quarterly Census of Employment and Wages.

Colorado Job Loss & Recovery by High Wage Industries



Source: Colorado Department of Labor and Employment; Bureau of Labor Statistics
 Data seasonally adjusted. Note: high wage industries are determined by the 2019 state-level average weekly wage estimates from the Quarterly Census of Employment and Wages.

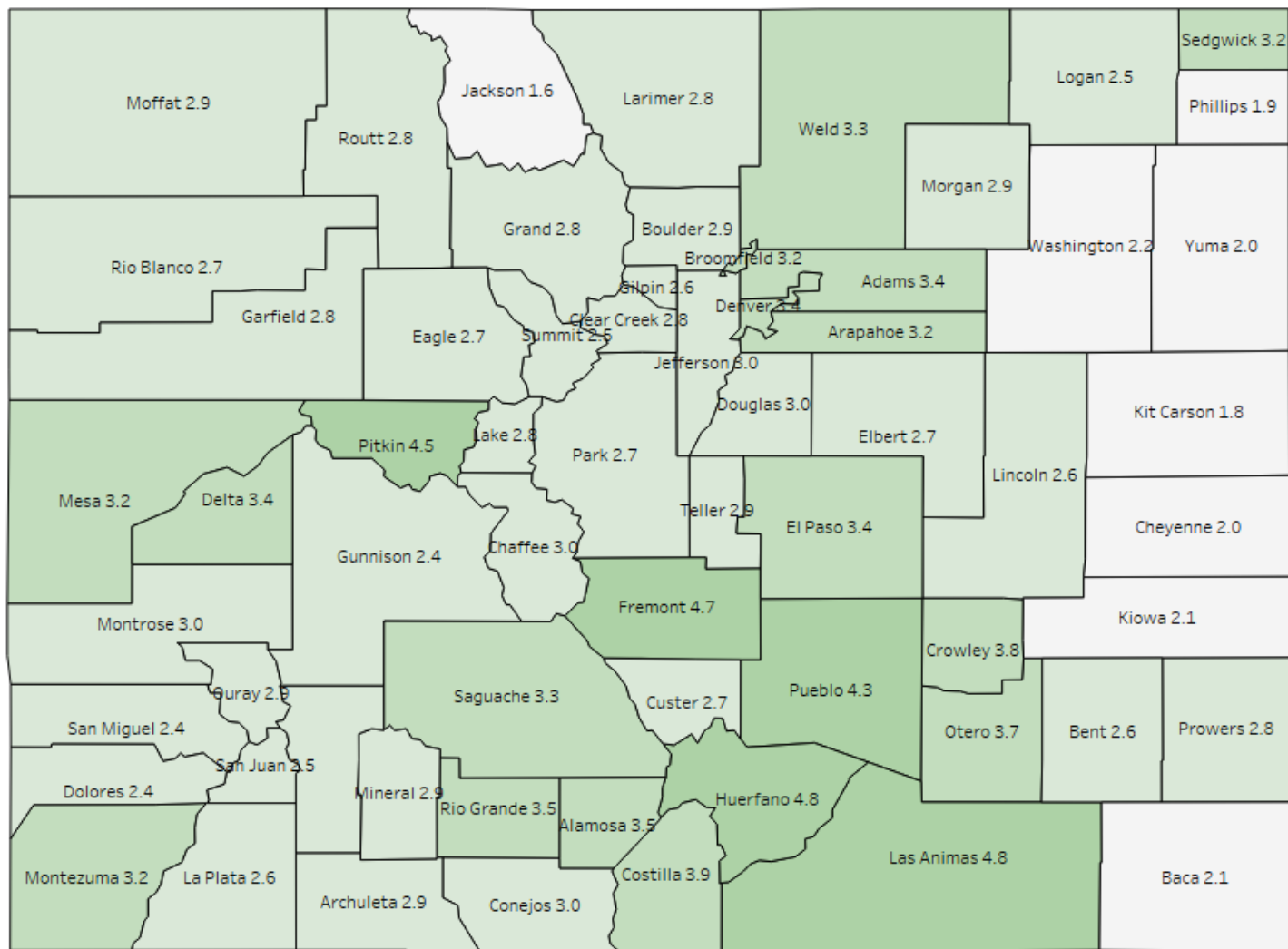
Colorado Job Loss & Recovery by Colorado Substate Area



Source: Colorado Department of Labor and Employment; Bureau of Labor Statistics

Data seasonally adjusted. Note: MSA = Metropolitan Statistical Area; Non-Metro Colorado = residual of state that is not an MSA (47 counties).

County Unemployment Rates October 2023



LABOR FORCE SUMMARY
COLORADO

Preliminary Estimates for October 2023

LABOR FORCE DATA (VALUES IN THOUSANDS)					
SEASONALLY ADJUSTED:				Change from last:	
	Oct-23	Sep-23	Oct-22	Month	Year
Total Civilian Labor Force	3,247.0	3,252.6	3,195.7	-5.6	51.4
Unemployment	105.9	103.5	90.7	2.4	15.2
Unemployment Rate (%)	3.3	3.2	2.8	0.1	0.5
Employment	3,141.1	3,149.1	3,104.9	-8.0	36.2
UNADJUSTED FOR SEASONALITY:				Change from last:	
	Oct-23	Sep-23	Oct-22	Month	Year
Total Civilian Labor Force	3,239.5	3,253.0	3,212.0	-13.5	27.6
Unemployment	103.1	105.0	86.3	-1.8	16.9
Unemployment Rate (%)	3.2	3.2	2.7	0.0	0.5
Employment	3,136.4	3,148.1	3,125.7	-11.7	10.7

WAGE AND SALARY EMPLOYMENT DATA (VALUES IN THOUSANDS)					
SEASONALLY ADJUSTED:				Change from last:	
	Oct-23	Sep-23	Oct-22	Month	Year
Mining & Logging	22.2	22.3	21.1	-0.1	1.1
Construction	178.7	180.1	185.9	-1.4	-7.2
Manufacturing	155.1	155.1	153.2	0.0	1.9
Trade, Transportation, & Utilities	495.5	496.4	502.4	-0.9	-6.9
Information	76.9	76.8	77.2	0.1	-0.3
Financial Activities	171.0	171.0	178.5	0.0	-7.5
Professional & Business Services	496.9	496.9	490.0	0.0	6.9
Educational & Health Services	360.5	360.1	352.5	0.4	8.0
Leisure & Hospitality	361.9	360.4	344.9	1.5	17.0
Other Services	123.0	122.8	123.0	0.2	0.0
Government	476.0	474.3	455.9	1.7	20.1
TOTAL NONAG	2,917.7	2,916.2	2,884.6	1.5	33.1
Labor Disputants	0.0	0.0	0.0	0.0	0.0
UNADJUSTED FOR SEASONALITY:				Change from last:	
	Oct-23	Sep-23	Oct-22	Month	Year
Mining & Logging	22.4	22.4	21.3	0.0	1.1
Construction	181.2	182.9	189.0	-1.7	-7.8
Manufacturing	155.0	155.2	153.4	-0.2	1.6
Trade, Transportation, & Utilities	493.6	490.2	500.4	3.4	-6.8
Information	77.1	76.5	77.3	0.6	-0.2
Financial Activities	170.8	170.1	178.5	0.7	-7.7
Professional & Business Services	500.1	499.6	493.8	0.5	6.3
Educational & Health Services	363.3	359.7	354.8	3.6	8.5
Leisure & Hospitality	351.8	356.8	335.2	-5.0	16.6
Other Services	122.7	123.3	123.4	-0.6	-0.7
Government	484.9	478.1	464.3	6.8	20.6
TOTAL NONAG	2,922.9	2,914.8	2,891.4	8.1	31.5
Labor Disputants	0.0	0.0	0.0	0.0	0.0

Source: Colorado Department of Labor & Employment; Bureau of Labor Statistics

Not Seasonally Adjusted Labor Force

	October 2023				September 2023			
	Labor Force	Employment	Unemployment	Rate	Labor force	Employment	Unemployment	Rate
Colorado	3,239,508	3,136,359	103,149	3.2	3,253,044	3,148,061	104,983	3.2
Metropolitan Statistical Area								
Boulder	207,825	201,851	5,974	2.9	207,207	201,090	6,117	3.0
Colorado Springs	379,435	366,749	12,686	3.3	381,028	368,027	13,001	3.4
Denver-Aurora-Lakewood	1,732,029	1,676,310	55,719	3.2	1,741,874	1,685,095	56,779	3.3
Fort Collins	217,725	211,543	6,182	2.8	218,325	211,993	6,332	2.9
Grand Junction	77,839	75,345	2,494	3.2	78,124	75,588	2,536	3.2
Greeley	173,341	167,620	5,721	3.3	173,009	167,178	5,831	3.4
Pueblo	76,832	73,555	3,277	4.3	76,625	73,283	3,342	4.4
Counties								
Adams	283,029	273,372	9,657	3.4	284,535	274,668	9,867	3.5
Alamosa	8,609	8,306	303	3.5	8,492	8,191	301	3.5
Arapahoe	376,180	364,246	11,934	3.2	378,441	366,230	12,211	3.2
Archuleta	7,032	6,828	204	2.9	7,181	6,966	215	3.0
Baca	2,149	2,103	46	2.1	2,107	2,062	45	2.1
Bent	1,942	1,891	51	2.6	1,879	1,833	46	2.4
Boulder	207,825	201,851	5,974	2.9	207,207	201,090	6,117	3.0
Broomfield	42,856	41,478	1,378	3.2	43,063	41,694	1,369	3.2
Chaffee	10,040	9,735	305	3.0	10,331	10,022	309	3.0
Cheyenne	1,071	1,050	21	2.0	1,054	1,031	23	2.2
Clear Creek	6,156	5,986	170	2.8	6,185	6,018	167	2.7
Conejos	4,200	4,072	128	3.0	4,132	4,000	132	3.2
Costilla	1,904	1,829	75	3.9	1,888	1,809	79	4.2
Crowley	1,401	1,348	53	3.8	1,390	1,336	54	3.9
Custer	2,415	2,349	66	2.7	2,422	2,353	69	2.8
Delta	13,349	12,892	457	3.4	13,375	12,900	475	3.6
Denver	438,404	423,482	14,922	3.4	440,952	425,769	15,183	3.4
Dolores	1,228	1,199	29	2.4	1,218	1,188	30	2.5
Douglas	209,241	202,893	6,348	3.0	210,448	203,968	6,480	3.1
Eagle	34,549	33,622	927	2.7	35,160	34,289	871	2.5
El Paso	365,839	353,547	12,292	3.4	367,352	354,766	12,586	3.4
Elbert	16,185	15,752	433	2.7	16,225	15,773	452	2.8
Fremont	14,264	13,597	667	4.7	14,505	13,822	683	4.7
Garfield	31,265	30,400	865	2.8	31,865	30,994	871	2.7
Gilpin	3,930	3,826	104	2.6	3,949	3,848	101	2.6
Grand	8,874	8,623	251	2.8	9,300	9,048	252	2.7
Gunnison	12,167	11,879	288	2.4	12,165	11,882	283	2.3
Hinsdale	463	450	13	2.8	527	515	12	2.3
Huerfano	2,518	2,396	122	4.8	2,486	2,358	128	5.1
Jackson	1,141	1,123	18	1.6	1,132	1,110	22	1.9
Jefferson	344,405	333,948	10,457	3.0	346,374	335,744	10,630	3.1
Kiowa	951	931	20	2.1	945	926	19	2.0
Kit Carson	4,442	4,360	82	1.8	4,311	4,232	79	1.8
La Plata	32,824	31,968	856	2.6	32,403	31,531	872	2.7
Lake	5,081	4,939	142	2.8	5,088	4,967	121	2.4
Larimer	217,725	211,543	6,182	2.8	218,325	211,993	6,332	2.9
Las Animas	5,933	5,647	286	4.8	5,911	5,618	293	5.0
Lincoln	2,210	2,152	58	2.6	2,198	2,137	61	2.8
Logan	10,372	10,109	263	2.5	10,306	10,030	276	2.7
Mesa	77,839	75,345	2,494	3.2	78,124	75,588	2,536	3.2
Mineral	486	472	14	2.9	489	475	14	2.9
Moffat	6,832	6,637	195	2.9	6,886	6,689	197	2.9
Montezuma	12,687	12,280	407	3.2	12,755	12,329	426	3.3
Montrose	21,609	20,965	644	3.0	21,602	20,936	666	3.1
Morgan	16,052	15,589	463	2.9	15,790	15,310	480	3.0
Otero	8,014	7,719	295	3.7	7,943	7,635	308	3.9
Ouray	2,528	2,454	74	2.9	2,546	2,471	75	2.9
Park	11,643	11,327	316	2.7	11,702	11,383	319	2.7
Phillips	2,617	2,567	50	1.9	2,562	2,505	57	2.2
Pitkin	10,831	10,348	483	4.5	10,889	10,562	327	3.0
Prowers	6,555	6,373	182	2.8	6,422	6,245	177	2.8
Pueblo	76,832	73,555	3,277	4.3	76,625	73,283	3,342	4.4
Rio Blanco	2,977	2,898	79	2.7	2,963	2,881	82	2.8
Rio Grande	5,505	5,312	193	3.5	5,431	5,238	193	3.6
Routt	15,715	15,278	437	2.8	15,889	15,467	422	2.7
Saguache	3,529	3,414	115	3.3	3,482	3,357	125	3.6
San Juan	568	554	14	2.5	655	639	16	2.4
San Miguel	5,708	5,572	136	2.4	6,109	5,980	129	2.1
Sedgwick	1,047	1,013	34	3.2	1,041	1,008	33	3.2
Summit	20,067	19,559	508	2.5	21,059	20,544	515	2.4
Teller	13,596	13,202	394	2.9	13,676	13,261	415	3.0
Washington	2,901	2,837	64	2.2	2,848	2,779	69	2.4
Weld	173,341	167,620	5,721	3.3	173,009	167,178	5,831	3.4
Yuma	5,862	5,747	115	2.0	5,718	5,606	112	2.0

All estimates made in cooperation with the U.S. Department of Labor, Bureau of Labor Statistics and adjusted to Current Population Survey data.

Estimates have been revised to incorporate population data from the American Community Survey.

Colorado Department of Labor and Employment 2023

Not Seasonally Adjusted Labor Force

	October 2023				October 2022			
	Labor Force	Employment	Unemployment	Rate	Labor force	Employment	Unemployment	Rate
Colorado	3,239,508	3,136,359	103,149	3.2	3,211,953	3,125,661	86,292	2.7
Metropolitan Statistical Area								
Boulder	207,825	201,851	5,974	2.9	203,242	198,742	4,500	2.2
Colorado Springs	379,435	366,749	12,686	3.3	373,348	362,499	10,849	2.9
Denver-Aurora-Lakewood	1,732,029	1,676,310	55,719	3.2	1,729,256	1,683,233	46,023	2.7
Fort Collins	217,725	211,543	6,182	2.8	212,679	207,686	4,993	2.3
Grand Junction	77,839	75,345	2,494	3.2	77,358	75,108	2,250	2.9
Greeley	173,341	167,620	5,721	3.3	171,607	166,851	4,756	2.8
Pueblo	76,832	73,555	3,277	4.3	76,368	73,389	2,979	3.9
Counties								
Adams	283,029	273,372	9,657	3.4	282,723	274,314	8,409	3.0
Alamosa	8,609	8,306	303	3.5	8,405	8,143	262	3.1
Arapahoe	376,180	364,246	11,934	3.2	376,065	365,773	10,292	2.7
Archuleta	7,032	6,828	204	2.9	6,982	6,802	180	2.6
Baca	2,149	2,103	46	2.1	2,162	2,131	31	1.4
Bent	1,942	1,891	51	2.6	1,895	1,843	52	2.7
Boulder	207,825	201,851	5,974	2.9	203,242	198,742	4,500	2.2
Broomfield	42,856	41,478	1,378	3.2	42,621	41,590	1,031	2.4
Chaffee	10,040	9,735	305	3.0	9,785	9,539	246	2.5
Cheyenne	1,071	1,050	21	2.0	1,102	1,084	18	1.6
Clear Creek	6,156	5,986	170	2.8	6,187	6,019	168	2.7
Conejos	4,200	4,072	128	3.0	4,124	4,013	111	2.7
Costilla	1,904	1,829	75	3.9	1,870	1,808	62	3.3
Crowley	1,401	1,348	53	3.8	1,397	1,348	49	3.5
Custer	2,415	2,349	66	2.7	2,341	2,278	63	2.7
Delta	13,349	12,892	457	3.4	13,562	13,162	400	2.9
Denver	438,404	423,482	14,922	3.4	437,303	425,205	12,098	2.8
Dolores	1,228	1,199	29	2.4	1,191	1,163	28	2.4
Douglas	209,241	202,893	6,348	3.0	208,407	203,656	4,751	2.3
Eagle	34,549	33,622	927	2.7	33,787	32,967	820	2.4
El Paso	365,839	353,547	12,292	3.4	359,910	349,398	10,512	2.9
Elbert	16,185	15,752	433	2.7	16,211	15,868	343	2.1
Fremont	14,264	13,597	667	4.7	14,361	13,753	608	4.2
Garfield	31,265	30,400	865	2.8	30,384	29,597	787	2.6
Gilpin	3,930	3,826	104	2.6	3,944	3,850	94	2.4
Grand	8,874	8,623	251	2.8	8,671	8,446	225	2.6
Gunnison	12,167	11,879	288	2.4	11,671	11,427	244	2.1
Hinsdale	463	450	13	2.8	442	430	12	2.7
Huerfano	2,518	2,396	122	4.8	2,582	2,437	145	5.6
Jackson	1,141	1,123	18	1.6	1,071	1,054	17	1.6
Jefferson	344,405	333,948	10,457	3.0	344,073	335,514	8,559	2.5
Kiowa	951	931	20	2.1	960	946	14	1.5
Kit Carson	4,442	4,360	82	1.8	4,330	4,260	70	1.6
La Plata	32,824	31,968	856	2.6	31,721	30,937	784	2.5
Lake	5,081	4,939	142	2.8	4,765	4,656	109	2.3
Larimer	217,725	211,543	6,182	2.8	212,679	207,686	4,993	2.3
Las Animas	5,933	5,647	286	4.8	6,092	5,828	264	4.3
Lincoln	2,210	2,152	58	2.6	2,239	2,186	53	2.4
Logan	10,372	10,109	263	2.5	10,412	10,159	253	2.4
Mesa	77,839	75,345	2,494	3.2	77,358	75,108	2,250	2.9
Mineral	486	472	14	2.9	439	427	12	2.7
Moffat	6,832	6,637	195	2.9	6,777	6,608	169	2.5
Montezuma	12,687	12,280	407	3.2	12,642	12,259	383	3.0
Montrose	21,609	20,965	644	3.0	21,481	20,894	587	2.7
Morgan	16,052	15,589	463	2.9	15,871	15,440	431	2.7
Otero	8,014	7,719	295	3.7	8,065	7,753	312	3.9
Ouray	2,528	2,454	74	2.9	2,592	2,533	59	2.3
Park	11,643	11,327	316	2.7	11,722	11,444	278	2.4
Phillips	2,617	2,567	50	1.9	2,600	2,557	43	1.7
Pitkin	10,831	10,348	483	4.5	10,531	10,108	423	4.0
Prowers	6,555	6,373	182	2.8	6,389	6,247	142	2.2
Pueblo	76,832	73,555	3,277	4.3	76,368	73,389	2,979	3.9
Rio Blanco	2,977	2,898	79	2.7	2,913	2,829	84	2.9
Rio Grande	5,505	5,312	193	3.5	5,463	5,283	180	3.3
Routt	15,715	15,278	437	2.8	15,234	14,885	349	2.3
Saguache	3,529	3,414	115	3.3	3,484	3,397	87	2.5
San Juan	568	554	14	2.5	569	557	12	2.1
San Miguel	5,708	5,572	136	2.4	5,423	5,279	144	2.7
Sedgwick	1,047	1,013	34	3.2	1,109	1,086	23	2.1
Summit	20,067	19,559	508	2.5	19,479	19,030	449	2.3
Teller	13,596	13,202	394	2.9	13,438	13,101	337	2.5
Washington	2,901	2,837	64	2.2	2,887	2,834	53	1.8
Weld	173,341	167,620	5,721	3.3	171,607	166,851	4,756	2.8
Yuma	5,862	5,747	115	2.0	5,847	5,751	96	1.6

All estimates made in cooperation with the U.S. Department of Labor, Bureau of Labor Statistics and adjusted to Current Population Survey data.

Estimates have been revised to incorporate population data from the American Community Survey.

Colorado Department of Labor and Employment 2023

Not Seasonally Adjusted Labor Force								
	October 2023				September 2023			
Select Cities in Colorado	Labor Force	Employed	Unemployed	Rate	Labor Force	Employment	Unemployed	Rate
Arvada	71,253	69,108	2,145	3.0	71,686	69,478	2,208	3.1
Aurora	210,574	203,367	7,207	3.4	211,798	204,460	7,338	3.5
Boulder	69,740	67,670	2,070	3.0	69,507	67,415	2,092	3.0
Brighton	20,900	20,136	764	3.7	20,989	20,226	763	3.6
Castle Rock	39,601	38,354	1,247	3.1	39,824	38,557	1,267	3.2
Centennial	65,276	63,309	1,967	3.0	65,643	63,653	1,990	3.0
Colorado Springs	253,631	245,472	8,159	3.2	254,681	246,318	8,363	3.3
Commerce City	31,079	30,001	1,078	3.5	31,258	30,143	1,115	3.6
Englewood	21,950	21,236	714	3.3	22,075	21,351	724	3.3
Erie	19,126	18,565	561	2.9	19,066	18,506	560	2.9
Fort Collins	105,605	102,569	3,036	2.9	105,858	102,787	3,071	2.9
Fountain	13,872	13,388	484	3.5	13,928	13,434	494	3.5
Grand Junction	31,402	30,371	1,031	3.3	31,534	30,469	1,065	3.4
Greeley	53,221	51,323	1,898	3.6	53,136	51,188	1,948	3.7
Lafayette	18,583	18,069	514	2.8	18,485	18,000	485	2.6
Lakewood	89,877	86,950	2,927	3.3	90,380	87,418	2,962	3.3
Littleton	25,846	25,088	758	2.9	26,028	25,224	804	3.1
Longmont	58,806	57,022	1,784	3.0	58,686	56,807	1,879	3.2
Loveland	48,168	46,785	1,383	2.9	48,308	46,884	1,424	2.9
Northglenn	21,855	21,051	804	3.7	21,973	21,151	822	3.7
Parker	35,062	34,027	1,035	3.0	35,307	34,207	1,100	3.1
Pueblo	48,947	46,692	2,255	4.6	48,838	46,520	2,318	4.7
Thornton	84,284	81,693	2,591	3.1	84,749	82,080	2,669	3.1
Westminster	68,483	66,154	2,329	3.4	68,784	66,486	2,298	3.3
Wheat Ridge	17,710	17,086	624	3.5	17,853	17,177	676	3.8
Windsor	15,973	15,503	470	2.9	15,954	15,478	476	3.0

	October 2023				October 2022			
Select Cities in Colorado	Labor Force	Employed	Unemployed	Rate	Labor Force	Employment	Unemployed	Rate
Arvada	71,253	69,108	2,145	3.0	71,166	69,430	1,736	2.4
Aurora	210,574	203,367	7,207	3.4	210,493	204,202	6,291	3.0
Boulder	69,740	67,670	2,070	3.0	68,093	66,628	1,465	2.2
Brighton	20,900	20,136	764	3.7	20,831	20,199	632	3.0
Castle Rock	39,601	38,354	1,247	3.1	39,405	38,498	907	2.3
Centennial	65,276	63,309	1,967	3.0	65,139	63,574	1,565	2.4
Colorado Springs	253,631	245,472	8,159	3.2	249,689	242,591	7,098	2.8
Commerce City	31,079	30,001	1,078	3.5	31,021	30,104	917	3.0
Englewood	21,950	21,236	714	3.3	21,916	21,325	591	2.7
Erie	19,126	18,565	561	2.9	18,759	18,388	371	2.0
Fort Collins	105,605	102,569	3,036	2.9	103,027	100,699	2,328	2.3
Fountain	13,872	13,388	484	3.5	13,670	13,231	439	3.2
Grand Junction	31,402	30,371	1,031	3.3	31,178	30,275	903	2.9
Greeley	53,221	51,323	1,898	3.6	52,664	51,088	1,576	3.0
Lafayette	18,583	18,069	514	2.8	18,242	17,790	452	2.5
Lakewood	89,877	86,950	2,927	3.3	89,803	87,358	2,445	2.7
Littleton	25,846	25,088	758	2.9	25,832	25,194	638	2.5
Longmont	58,806	57,022	1,784	3.0	57,493	56,150	1,343	2.3
Loveland	48,168	46,785	1,383	2.9	47,116	45,932	1,184	2.5
Northglenn	21,855	21,051	804	3.7	21,798	21,124	674	3.1
Parker	35,062	34,027	1,035	3.0	34,964	34,155	809	2.3
Pueblo	48,947	46,692	2,255	4.6	48,712	46,587	2,125	4.4
Thornton	84,284	81,693	2,591	3.1	84,291	81,975	2,316	2.7
Westminster	68,483	66,154	2,329	3.4	68,215	66,417	1,798	2.6
Wheat Ridge	17,710	17,086	624	3.5	17,749	17,166	583	3.3
Windsor	15,973	15,503	470	2.9	15,789	15,385	404	2.6

All estimates made in cooperation with the U.S. Department of Labor, Bureau of Labor Statistics and adjusted to Current Population Survey data. Estimates have been revised to incorporate population data from the American Community Survey. Colorado Department of Labor and Employment 2023

Colorado LMI Data Overview

October 2023

Employment					
	Oct-23	Sep-23	Oct-22	Change from previous:	
				Period	Year
Nonfarm Wage and Salary Employment (SA)	2,917,700	2,916,200	2,884,600	1,500	33,100
Total Resident Employment (SA)	3,141,100	3,149,100	3,104,900	(8,000)	36,200
	Q1 2023	Q4 2022	Q1 2022		
UI Covered Total Employment	2,826,949	2,847,730	2,755,326	(20,781)	71,623
UI Covered Private Employment	2,389,453	2,409,300	2,331,346	(19,847)	58,107

Unemployment					
	Oct-23	Sep-23	Oct-22	Change from previous:	
				Period	Year
Unemployment (SA)	105,900	103,500	90,700	2,400	15,200
Percent Unemployed (SA)	3.3%	3.2%	2.8%	0.1	0.5
	Oct-23	Sep-23	Oct-22		
Initial Claims	13,518	10,823	11,650	2,695	1,868
Continued Weeks Claimed	116,601	101,750	84,493	14,851	32,108

Wages and Earnings					
	Q1 2023	Q4 2022	Q1 2022	Change from previous:	
				Period	Year
Total Average Weekly Wage	\$1,559	\$1,472	\$1,455	\$87	\$104
Private Average Weekly Wage	\$1,601	\$1,495	\$1,494	\$106	\$107
	Oct-23	Sep-23	Oct-22		
Average Weekly Earnings (Construction)	\$1,404.20	\$1,324.63	\$1,237.14	\$79.57	\$167.06
Average Weekly Earnings (Manufacturing)	\$1,197.73	\$1,192.88	\$1,149.69	\$4.85	\$48.04

CO Unemployment Insurance Trust Fund					
	Sep-23	Aug-23	Sep-22	Change from previous:	
				Period	Year
Employer Contributions	\$2,640,902	\$96,795,923	\$3,950,398	(\$94,155,021)	(\$1,309,496)
Benefits Paid	\$52,100,531	\$52,543,454	\$29,908,426	(\$442,923)	\$22,192,105
Average Weekly Benefit Amount	\$608.22	\$600.60	\$504.09	\$7.61	\$104.13
Duration (weeks)	14.19	14.06	11.16	0.13	3.03
Outstanding Title XII Loan Balance	\$0	\$0	\$33,089,861	\$0	(33,089,861)

Consumer Price Index for All Urban Consumers					
Not seasonally adjusted	Sep-23	Jul-23	Sep-22	% Change from previous:	
				Period	Year
Denver-Aurora-Lakewood	324.704	323.298	308.211	0.4%	5.4%
US City Average	307.789	305.691	296.808	0.7%	3.7%

(Most current data available for all categories)