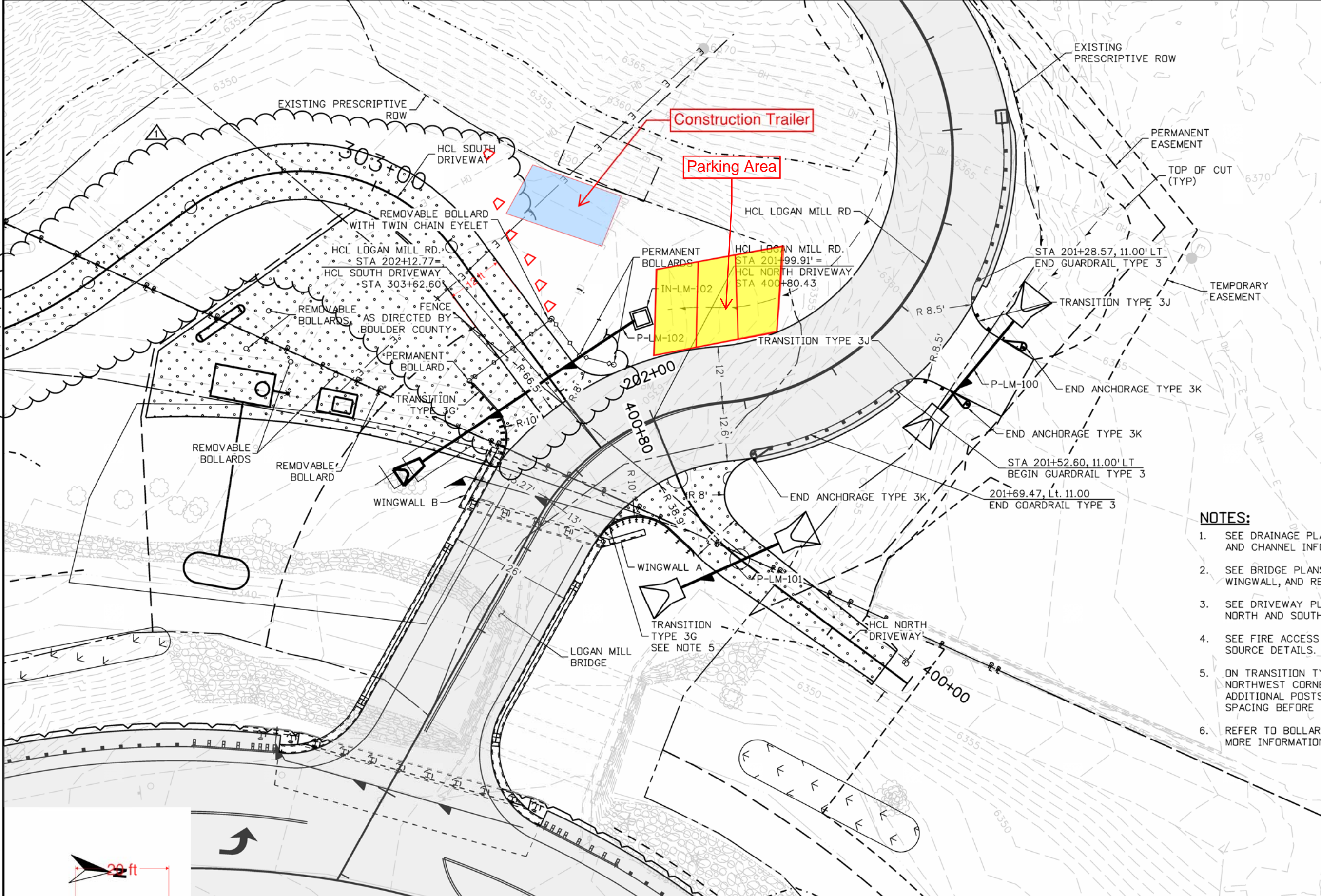
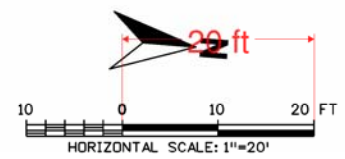


jondelle.ribe 4:20:11 PM 3/12/2018 p:\DCPW\AP1\lbr.mdb\corp\Documents\Projects\Lakewood\Office\Boulder_County_Emergency_Transportation\107\08_Sheet\Files\05_Roadway\06_Logan_Mill_Road_Plan02.dgn



- NOTES:**
1. SEE DRAINAGE PLANS FOR CULVERT AND CHANNEL INFORMATION.
 2. SEE BRIDGE PLANS FOR BRIDGE, WINGWALL, AND RETAINING WALL INFORMATION.
 3. SEE DRIVEWAY PLAN AND PROFILES FOR NORTH AND SOUTH DRIVEWAY DESIGN.
 4. SEE FIRE ACCESS PLAN FOR FIRE DEPT WATER SOURCE DETAILS.
 5. ON TRANSITION TYPE 3G RADIUS AT THE NORTHWEST CORNER OF BRIDGE ADD 3 ADDITIONAL POSTS (9 TOTAL) AT 1'-6 3/4" SPACING BEFORE TRANSITION SECTION.
 6. REFER TO BOLLARD DETAILS SHEET FOR MORE INFORMATION.



| | | | | | | |
|-------------------|--|--|---|--|---|--|
| AD SET | CALL UTILITY NOTIFICATION CENTER OF COLORADO CALL 2-BUSINESS DAYS IN ADVANCE BEFORE YOU DIG, GRADE, OR EXCAVATE FOR THE MARKING OF UNDERGROUND MEMBER UTILITIES | | NO. 1 DATE 4/18 REVISION DESCRIPTION: ANNE RICE DRIVEWAY REVISION | BOULDER COUNTY TRANSPORTATION DEPARTMENT ENGINEERING DIVISION | DESIGNED: JWL CAD: EAV CHECKED: SLS DATE: 07/21/17 | PROJECT NO: 4012-SEPT12C39 SHEET NO: 25 |
| | | | | | | |

LOGAN MILL ROAD
ROADWAY PLAN
(SHEET 2 OF 2)