



# INFLUENZA WATCH

Week 12  
Ending 3/23/19

The purpose of the weekly *Influenza Watch* is to summarize current influenza surveillance in San Diego County. **Please note that reported weekly data are preliminary and may change due to delayed submissions and additional laboratory results.**

**Contents**

Page 1: Current Season Summary  
Page 2: Communiqué  
Page 3: Activity Level Indicator  
Pages 4-9: Trend Graphs  
Page 9: Reporting Information

Current  
Week**Current Week 12 (ending 3/23/2019)**

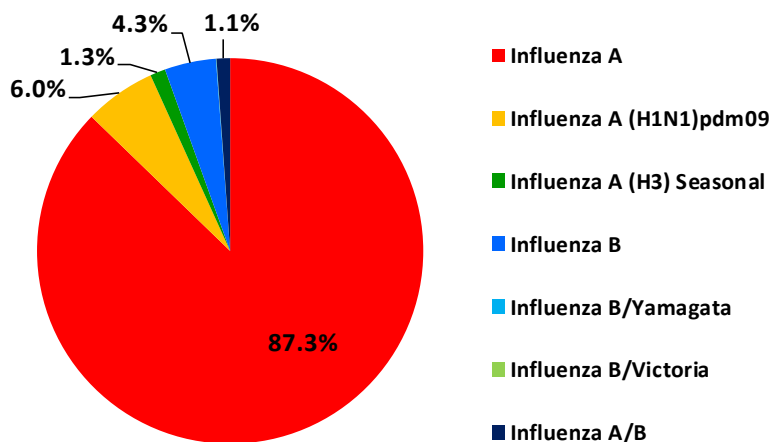
- 675 new influenza detections reported: *Elevated level*
- 5% influenza-like-illness (ILI) among emergency department visits: *Expected level*
- 5 new influenza-related deaths reported this week
- 7% of deaths registered with pneumonia and/or influenza: *Expected level*

Current  
Season Summary**7,886**

Total Cases

**54**Deaths<sup>†</sup>**23**

Outbreaks\*

**Virus Characteristics**

† Flu deaths less than 18 years of age are reportable to CDPH.

\* At least one case of laboratory-confirmed influenza in a setting experiencing two or more cases of influenza like illness (ILI) within a 72-hour period.

**Table 1. Influenza Surveillance Indicators.**

Indicator	2018-19 Season			2017-18 Season		Prior 3-Year Average**	
	Week 12	Week 11	Total To Date	Week 12	Total To Date	Week 12	Total To Date
All influenza detections reported (rapid or PCR)	675	536	7,886	399	19,841	270	10,179
Percent of emergency department visits for ILI	5%	5%		5%		4%	
Percent of deaths registered with pneumonia and/or influenza	7%	8%		7%		7%	
Number of influenza-related deaths reported <sup>^</sup>	5	3	54	11	318	8	151

Influenza season is July 1 - June 30, Weeks 27-26. Total deaths reported in prior seasons: 342 in 2017-18, 87 in 2016-17, and 68 in 2015-16.

\* Previous weeks case counts or percentages may change due to delayed processing or reporting.

\*\* Includes FYs 2015-16, 2016-17, and 2017-18.

<sup>^</sup> Current FY deaths are shown by week of report; by week of death for prior FYs.

**Health Officer Order on Influenza Immunization Extended**

A San Diego County [Health Officer Order](#) requires healthcare personnel (HCP) in acute care hospitals, ambulatory and community clinics, emergency medical services agencies, long-term care and nursing facilities, and private physician practices to either receive the annual influenza vaccination or wear a mask while in patient care areas until March 31.

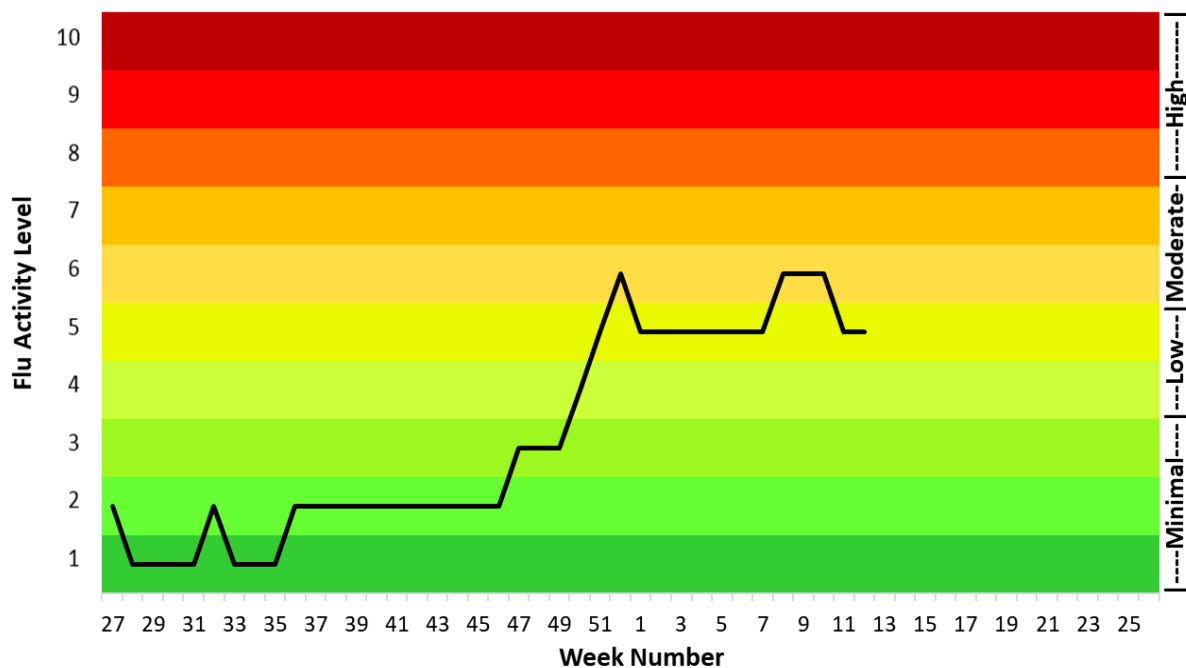
Due to continued elevated influenza activity in the county, the order for unvaccinated HCP to wear a mask while in patient care areas has been extended **until April 30**. The written notice of the extension may be found [here](#). If influenza activity remains elevated, further extension may be required.

Information on the order and resources that may be used in a vaccination program for HCP may be found at [Mandatory Vaccination or Masking for Health Care Personnel](#).

**Table 2. Influenza Detections Reported, FY 2018-19\***

Positive Test Type/Subtype	Week 12	Week 11	Total FYTD	Percent FYTD
Influenza A	632	471	6,881	87.3%
Influenza A (H1N1)pdm09	7	17	472	6.0%
Influenza A (H3) Seasonal	7	19	101	1.3%
Influenza B	24	23	339	4.3%
Influenza B/Yamagata	0	0	1	0.0%
Influenza B/Victoria	0	0	3	0.0%
Influenza A/B	5	6	89	1.1%
<b>Total</b>	<b>675</b>	<b>536</b>	<b>7,886</b>	<b>100.0%</b>

\* Season is July 1 - June 30

**Figure 1. Influenza Activity Level for Emergency Department ILI.**

Legend	Minimal			Low		Moderate		High		
	LEVEL 1	LEVEL 2	LEVEL 3	LEVEL 4	LEVEL 5	LEVEL 6	LEVEL 7	LEVEL 8	LEVEL 9	LEVEL 10
	< mean	≥ mean and <1 standard deviation above mean	≥1 and <2 standard deviations above mean	≥2 and <3 standard deviations above mean	≥3 and <4 standard deviations above mean	≥4 and <5 standard deviations above mean	≥5 and <6 standard deviations above mean	≥6 and <7 standard deviations above mean	≥7 and <8 standard deviations above mean	≥8 standard deviations above mean

**Influenza Activity Indicator:**

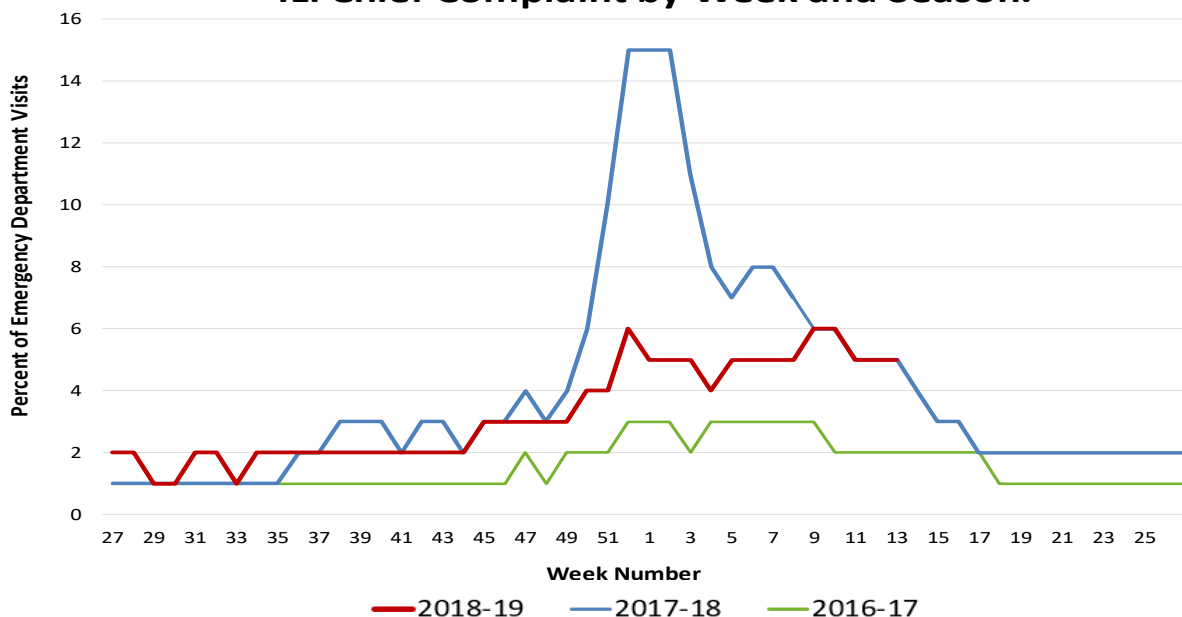
The activity levels show how the current week's ED ILI% (emergency department influenza-like-illness, percent of all visits) compares to the mean, and number of standard deviations above of the mean, of the non-influenza season weeks (CDC disease weeks 27-39) observed from the prior five seasons.

There are 10 activity levels, classified as: Minimal (levels 1-3), Low (levels 4-5), Moderate (levels 6-7), and High (levels 8-10). An activity level of 1 corresponds to when the ED ILI% is below the mean; level 2 corresponds to when the ED ILI% is less than 1 standard deviation above the mean; level 3 corresponds to when the ED ILI% is more than 1 but less than 2 standard deviations above the mean, and so on, with an activity level of 10 corresponding to when the ED ILI% is at 8 or more standard deviations above the mean.

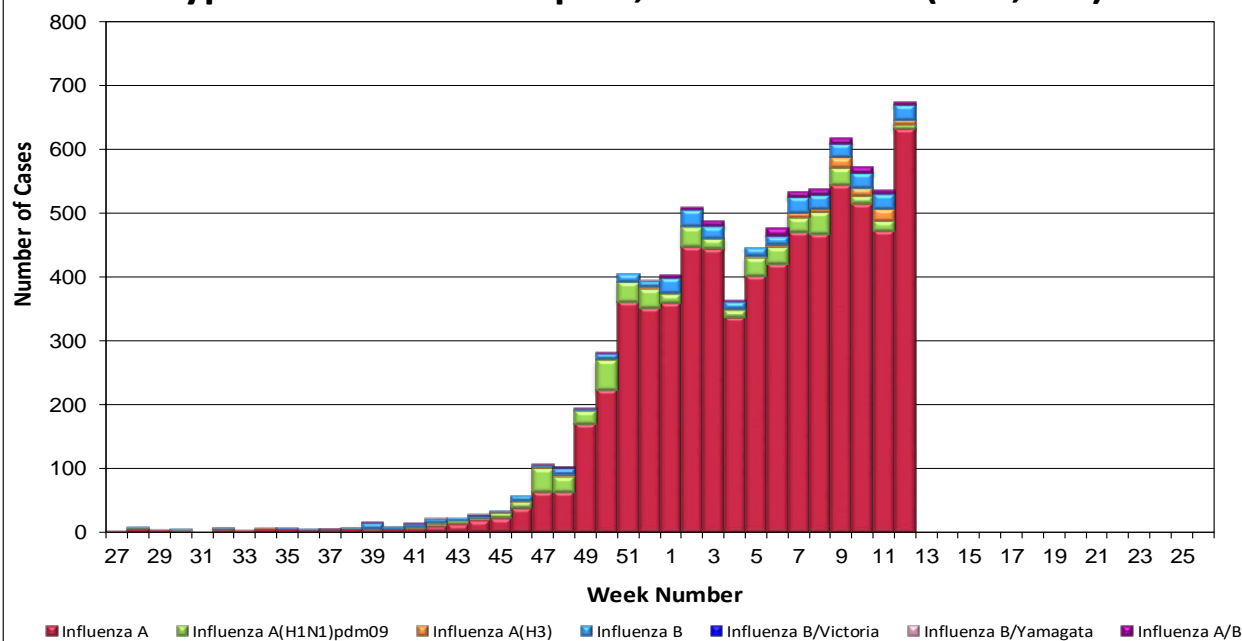
# INFLUENZA WATCH

Week 12  
Ending 3/23/19

**Figure 2. Percent of Emergency Department Visits for ILI Chief Complaint by Week and Season.**



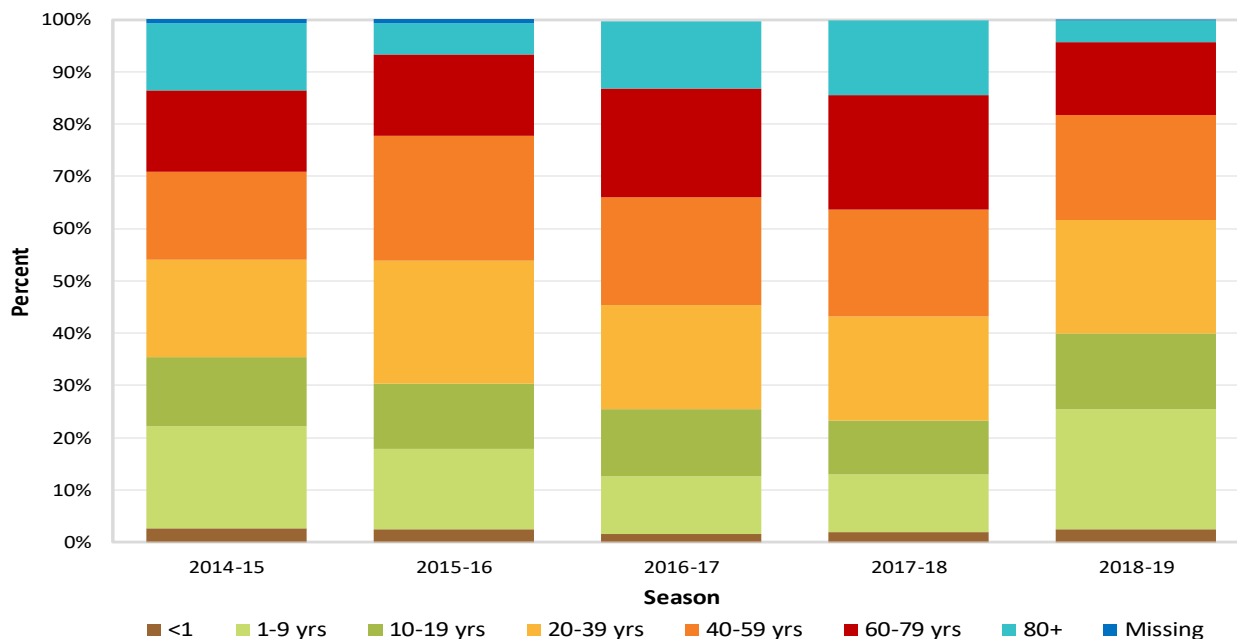
**Figure 3. San Diego County Influenza Detections by Type and Week of Report, 2018-19 FYTD (N=7,886).**



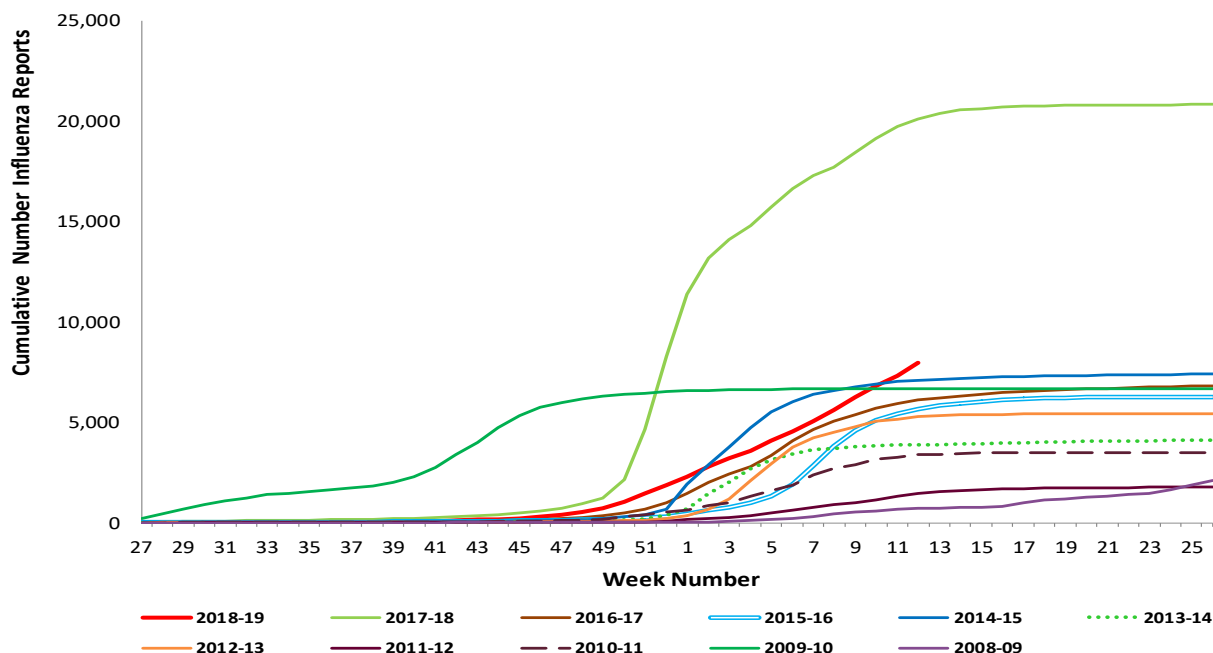
# INFLUENZA WATCH

Week 12  
Ending 3/23/19

**Figure 4. Proportion of Influenza Detections by Age and Season, 2014-15 to 2018-19.**



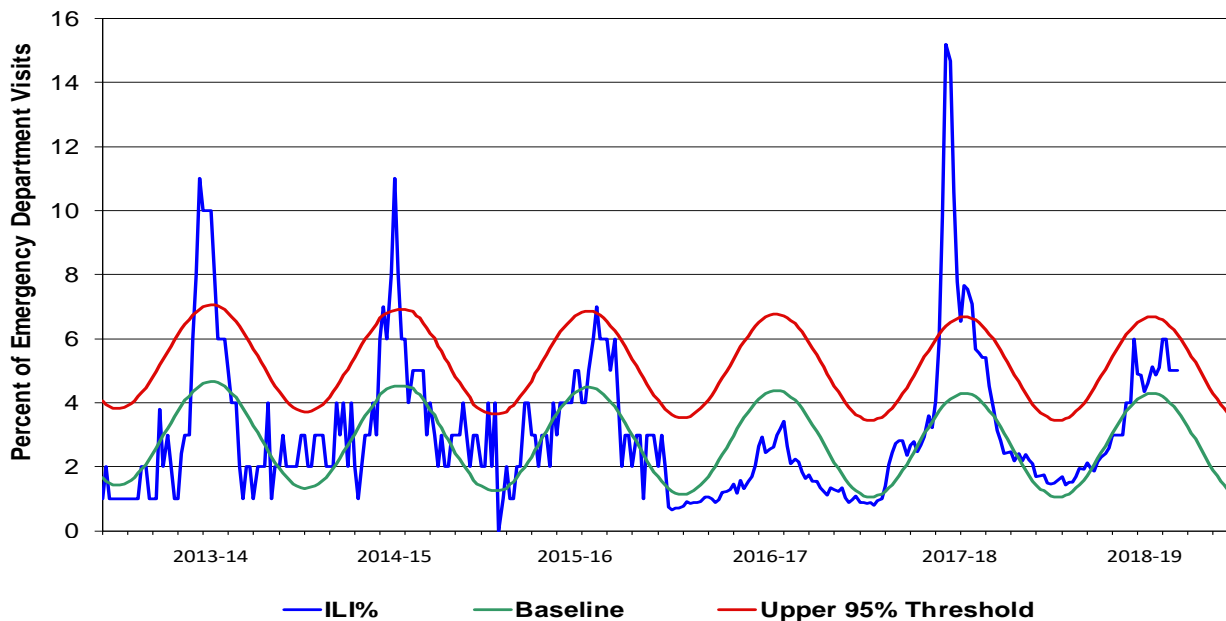
**Figure 5. Cumulative Influenza Case Reports by Episode Week & Season.**



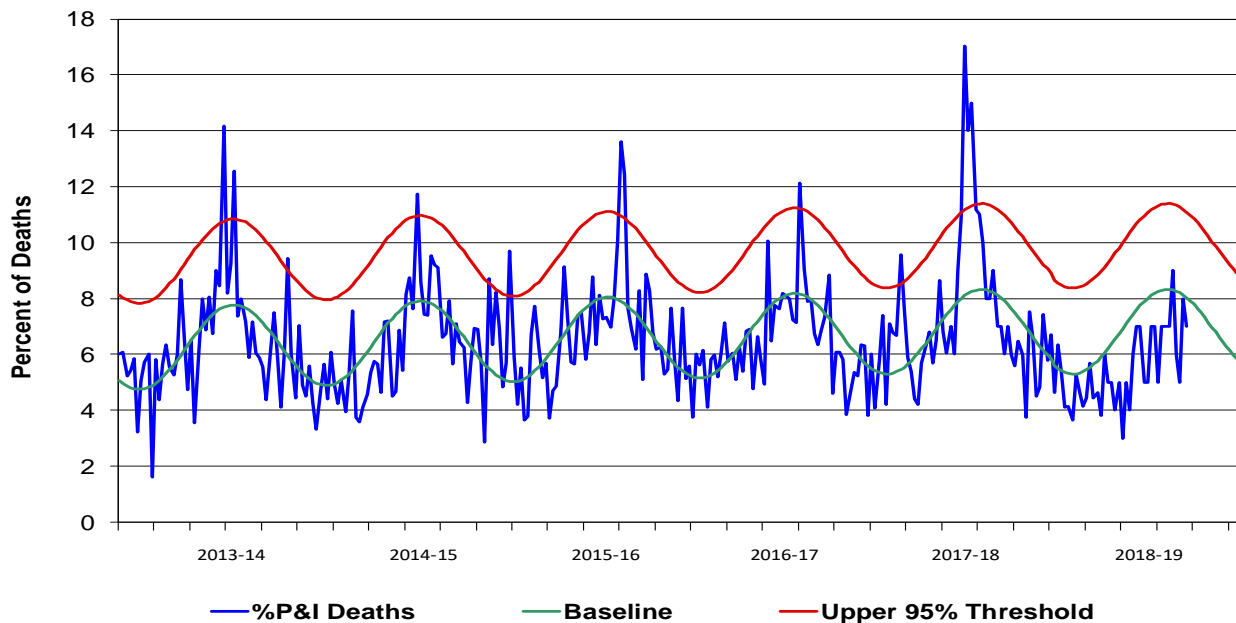
# INFLUENZA WATCH

Week 12  
Ending 3/23/19

**Figure 6. Percent of San Diego County Emergency Department Visits for Influenza-like Illness by Week and Season Compared to 5-Year Baseline & Upper 95% Threshold Values (Serfling Method).**



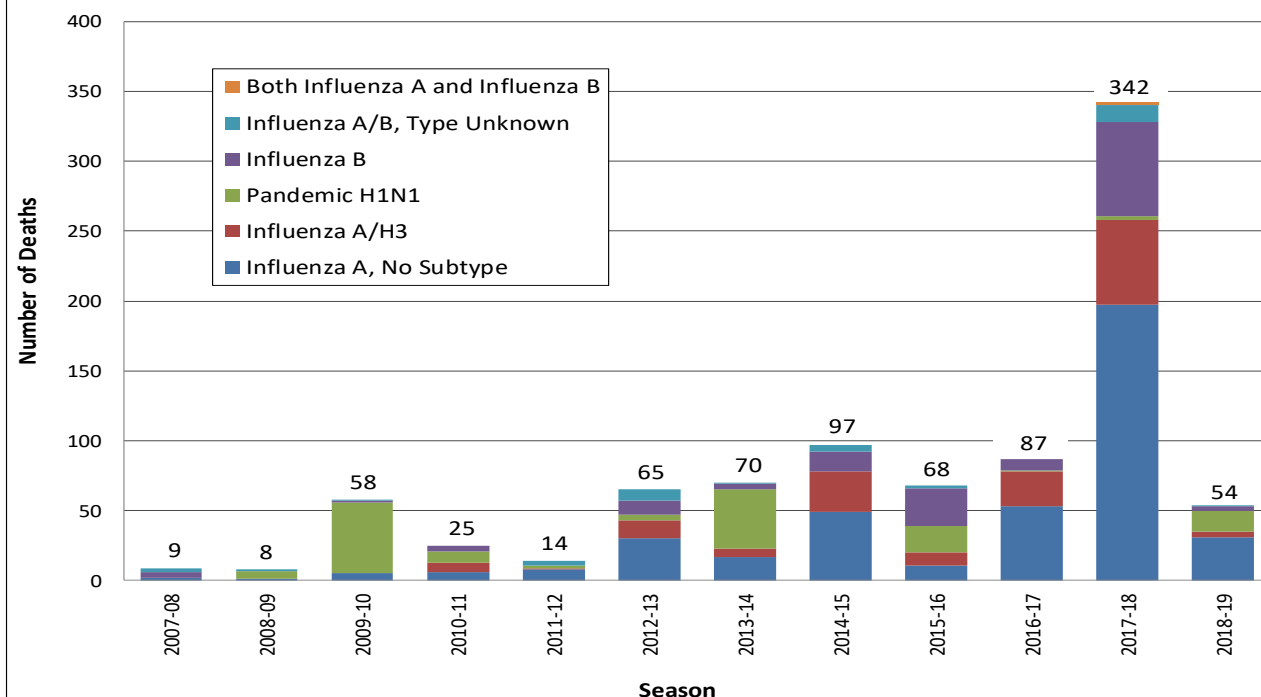
**Figure 7. Percent of San Diego County Deaths Registered with Pneumonia and/or Influenza by Week and Season Compared to Prior 5-Year Baseline & Upper 95% Threshold Values (Serfling Method).**



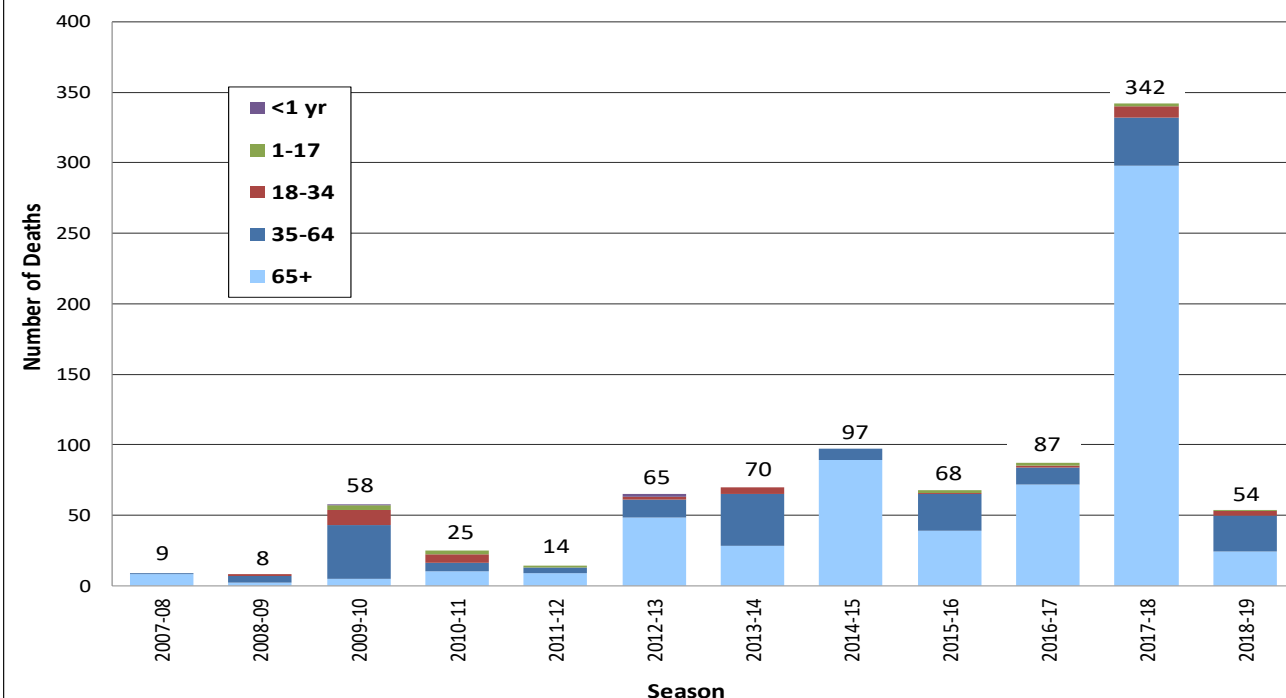
# INFLUENZA WATCH

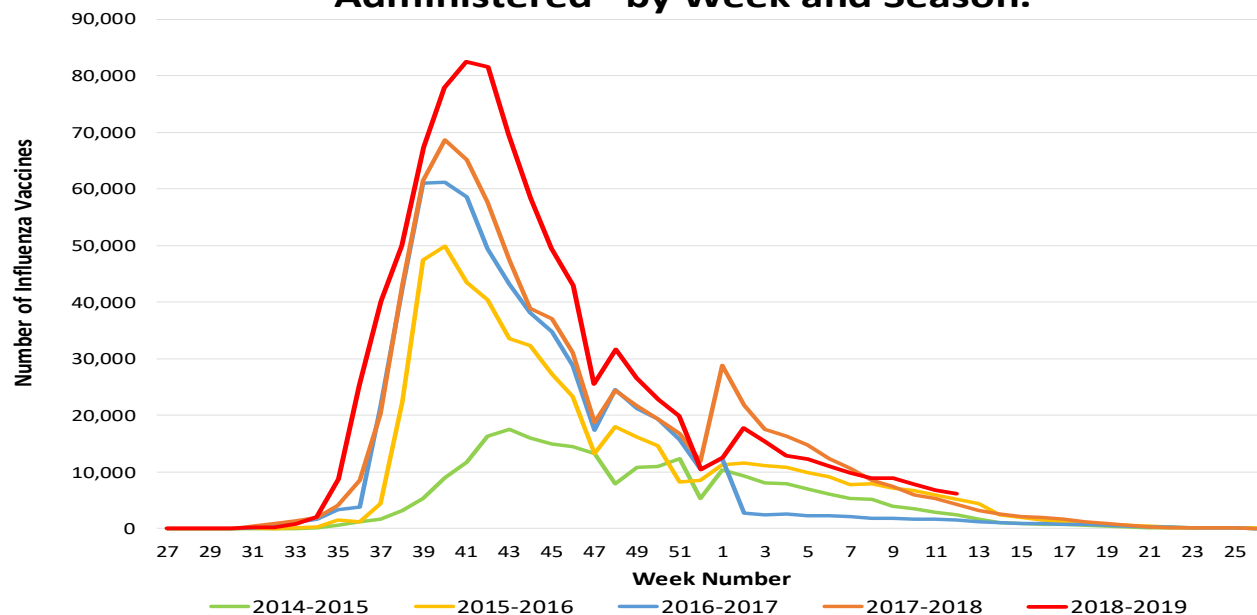
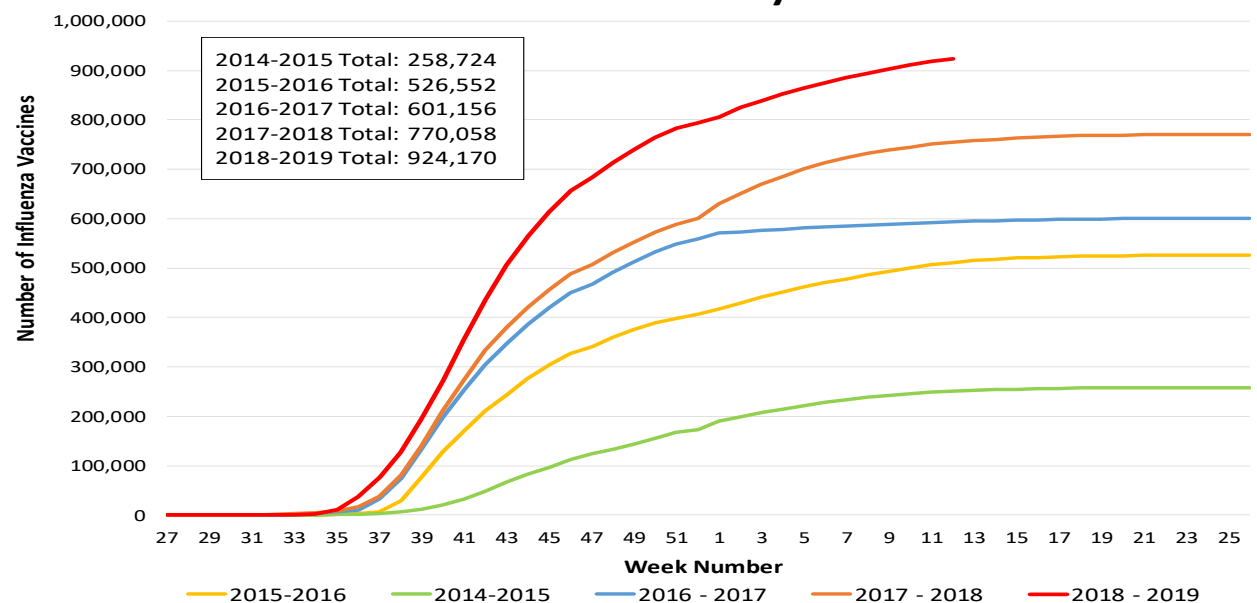
Week 12  
Ending 3/23/19

**Figure 8. Influenza Deaths by Type and Season.**



**Figure 9. Influenza Deaths by Age and Season.**

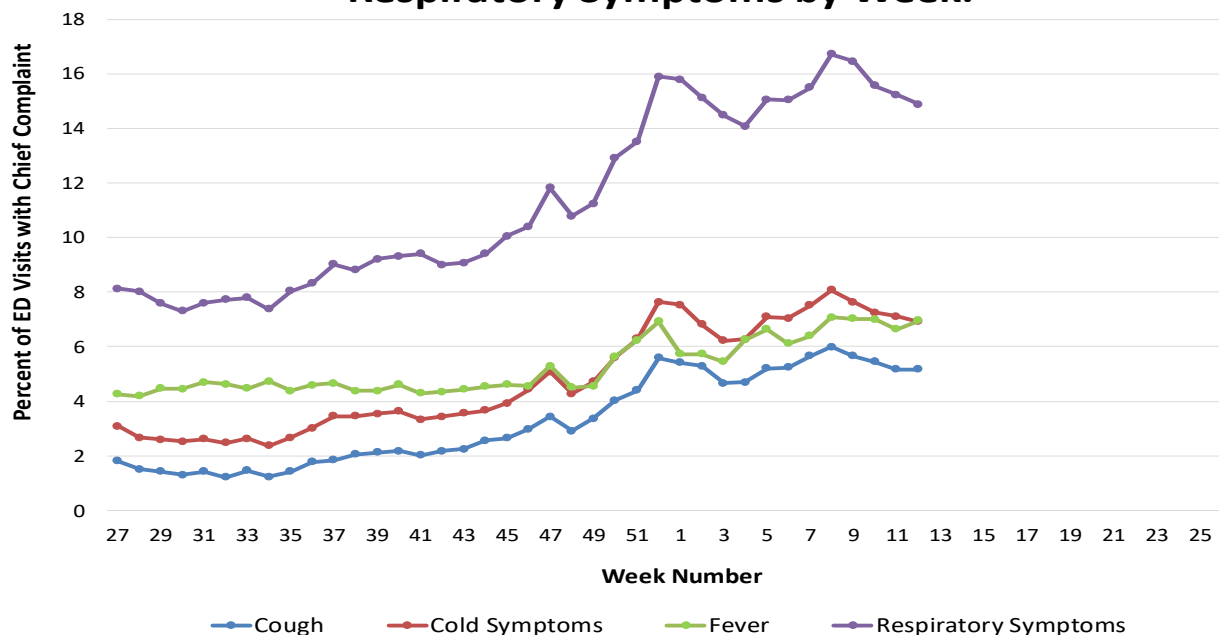


**Figure 10. Number of Influenza Vaccinations Administered\* by Week and Season.****Figure 11. Cumulative Number of Influenza Vaccinations Administered\* by Week and Season.**

\* Influenza vaccinations administered and entered into the San Diego Immunization Registry ([SDIR](#))



**Figure 12. Percent of Emergency Department Visit Chief Complaints for Cough, Cold, Fever, or Respiratory Symptoms by Week.**



### Influenza Reporting in San Diego County

Local providers are encouraged to report laboratory-positive influenza detections to the County Epidemiology Program by **FAX (858) 715-6458**. Please fax a [Confidential Morbidity Report Form](#), or an [Influenza Case Report Form](#), and/or a printed laboratory result. If known, please indicate if the patient was admitted to ICU and/or died, and/or is a resident of a congregate living facility.

Regarding sending influenza specimens to [Public Health Laboratory](#) (PHL) for confirmation, please use the updated PHL [Test Request Form](#) and contact PHL at **(619) 692-8500** with any questions. Contact the Epidemiology Program by telephone **(619) 692-8499** or email to [EpiDiv.HHSA@sdcounty.ca.gov](mailto:EpiDiv.HHSA@sdcounty.ca.gov) with questions regarding influenza data.

#### Resources

County of San Diego Epidemiology Program website [www.sdepi.org](http://www.sdepi.org)  
 County of San Diego [2017-18 Influenza Season Summary](#)  
 Current Week Influenza Watch [Slide Deck](#) – A slide presentation version of this report  
 County of San Diego Immunization Program (SDIZ) [www.sdiz.org](http://www.sdiz.org)

California Department of Public Health (CDPH) [Influenza Update](#)  
 Centers for Disease Control and Prevention (CDC) [Influenza Surveillance](#)