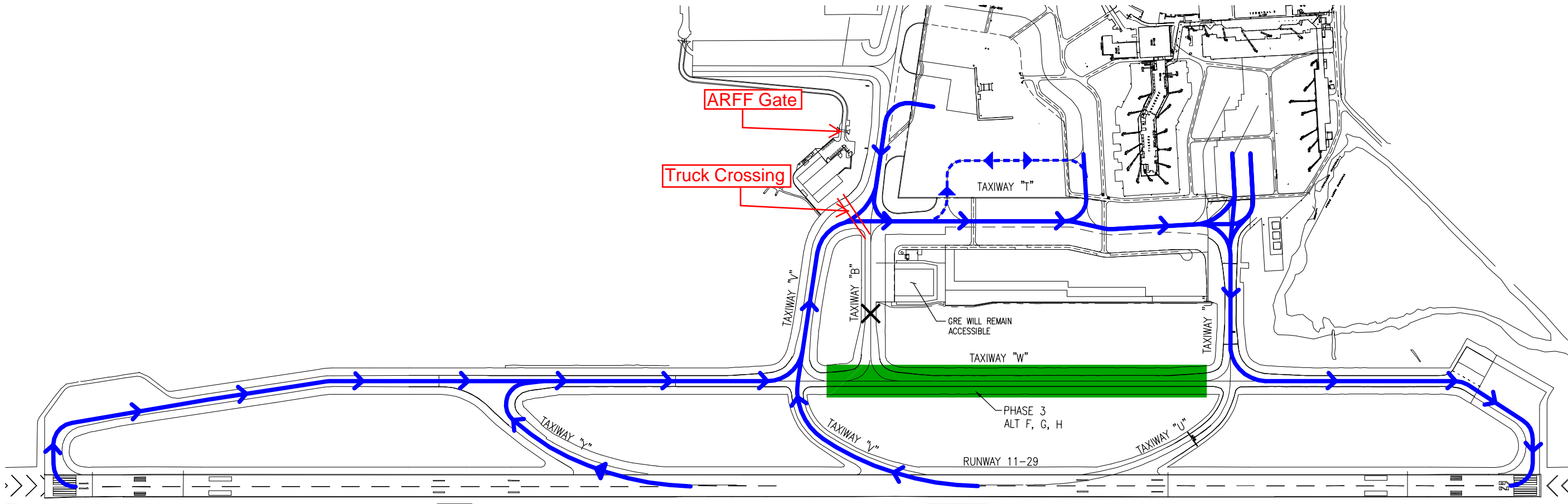


DWG Name: P:\60212646 OAK TWY W & U\CADD\Planning\ Oak Traffic - Ph 3-29.dwg
CAD Generated: Oct 13, 2011 - 2:55pm User: gallardo



PHASE	BID ALT	CONSTRUCTION AREA	AIRFIELD RESTRICTIONS	DURATION (CALENDAR DAYS)	NIGHT-TIME PAVING CLOSURES
3	ALT. F, G, H	TAXIWAY "W" (BETWEEN TWY "V" & TWY "U")	TAXIWAY "W" (BETWEEN TWY "V" & TWY "U") SHALL BE CLOSED TO AIRPORT OPERATIONS TAXIWAY "B" (BETWEEN TWY "W" & TWY "T") SHALL BE CLOSED TO AIRPORT OPERATIONS.	50 DAYS	NOT REQUIRED

PREPARATION PHASING WORK:

1. INSTALL ALL NECESSARY LOW PROFILE BARRICADES AROUND PROJECT AREA.
2. REMOVE TAXIWAY CENTERLINE AND EDGE STRIPING LEADING INTO THE CONSTRUCTION AREA.
3. COVER OR MASK TAXIWAY CENTERLINE AND EDGE LIGHTING LEADING INTO THE CONSTRUCTION AREA.
4. REMOVE ANY INTERFERING EDGE REFLECTORS.
5. REMOVE ANY INTERFERING EDGE LIGHT FIXTURES, INSTALL ELECTRICAL SHORTING CAP AND COVER PLATE.

LEGEND:

- WORK AREA WITH FULL AIRFIELD CLOSURE
- GROUP IV AND SMALLER AIRCRAFT ROUTE
- GROUP III AND SMALLER AIRCRAFT ROUTE

NOTE:
1. GROUP V AIRCRAFT SHALL USE THE GROUP IV AND SMALLER AIRCRAFT ROUTE.

REFERENCES:
PLANS: AA-3936
FIELD BOOKS
"PORT OF OAKLAND DATUM" IS 3.20' BELOW MEAN SEA LEVEL
CAUTION:
CHECK TRACING FOR LATEST REVISIONS

REVISIONS				
NO.	DATE	REV'D	APP'D	

DRAWN	A.G.
DESIGNED	D.S.
CHECKED	D.Y.
REVIEWED	J.B.



PREPARED BY
AECOM
999 TOWN & COUNTRY ROAD
ORANGE, CALIFORNIA 92668
TEL: (714) 567-2501
FAX: (714) 567 2441
www.aecom.com



CAUTION: THIS PLAN MAY BE REDUCED ORIGINAL SCALE

OAKLAND INTERNATIONAL AIRPORT		DATE: 7/27/2011
PAVEMENT IMPROVEMENTS FOR TAXIWAYS "W" AND "U", PHASE 1		SCALE: AS SHOWN
PHASE 3 - RUNWAY 29 ARRIVALS & DEPARTURES		SHEET: 8 OF 8 SHEETS
		AA-4093