

Southwest Gas Q&D Construction North Tahoe Lateral



SOUTHWEST GAS



Q&D CONSTRUCTION

est. 1964



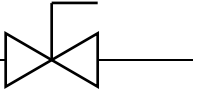
Overview

- Current Project Status
- Emergency Response
- Public Outreach
- Working Hours Assessment

Current Project Status

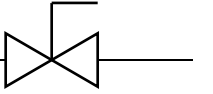
- 18,000 LF Installed to Date
- Phase 1 Mainline Complete
- Phase 1 Services in-progress
- Phase 2 HDD in Carnelian Bay Complete
- Phase 3 Mainline in Tahoe City near Complete
- Phase 3 HDD in Tahoe City near Complete
- Phase 1 Mill and Overlay late June
- HDD Work Halted due to Lane Restrictions

Emergency Response Plan



- 20 trench plates kept onsite at all times to maintain ability to open roadway for emergencies within 2-4 hours notice.
- Cold mix asphalt kept in staging area at all times
- Roadway can be backfilled and paved back within 12 hours of notification
- Emergency services and public transportation are allowed through closure with delays of less than 5 minutes

Project 24 Hour Emergency Contacts



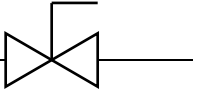
SWG 24 Hour Contacts

- Southwest Gas Dispatch
(775) 841-6869
- Chris Evans- Construction Manager
(775) 887-2816
- Amanda Marcucci- Superintendent
(775) 430-0723

Q&D 24 Hour Contacts

- David Wix- Superintendent
(775) 841-6869
- Shawn England- Project Manager
(775) 887-2816
- Suzy Barker- Traffic Control
Supervisor
(775) 430-0723

Public Outreach



- Three Changeable Message Boards
- Six Caltrans CMS in area
- 24 hour project hotline
- Website (<https://www.swgas.com/en/north-lake-tahoe-lateral-pipeline-replacement-project>)
 - Weekly Updates
- Door Hangers for affected properties
- Door to Door in Person contact at affected properties
- Local Business Associations
 - Tahoe City Downtown Association presentation
 - North Tahoe Community Alliance presentation
- Mailer sent out to 4,000 residents and businesses in the project area in May 2023

Construction Alert:



N. Lake Blvd (SR 28), Tahoe City to Kings Beach

Construction Begins Soon

A contractor for Southwest Gas, Q & D Construction, will soon begin construction on the next phase of a multi-phase project replacing existing natural gas pipeline in N. Lake Blvd (SR28) from SR89 to SR267 (North Shore Blvd). **This phase of work begins near Tahoe City moving northeast towards Kings Beach; however, some remaining work will take place between Onyx and Brassie St.** This phase of work is estimated to be complete in October 2023. Southwest Gas customers should not experience an interruption in gas service, unless notified.

- Roads will remain open for travel in both directions; however, flagger activity will be in place to direct travelers around the work zone when only one lane is available.
- Crews are scheduled to work day and night hours with traffic restrictions removed each Friday at 2 p.m. and placed back Sunday night at 7 p.m.
- Crews will not work July 4th weekend, with work ceasing Friday, June 30, at 2 p.m. until Sunday, July 9, at 9 p.m.
- Service replacements will take place for Southwest Gas customers, so crews will need access to the existing gas meter on your property.
- Business and resident access will be maintained.

Thank you for your patience during construction.



Southwest Gas is committed to providing its customers with safe and reliable natural gas.

For additional information, contact our project hotline at 775.353.7039 or www.swgas.com/laketahoe.

Project Vicinity

Legend
● Whole Project

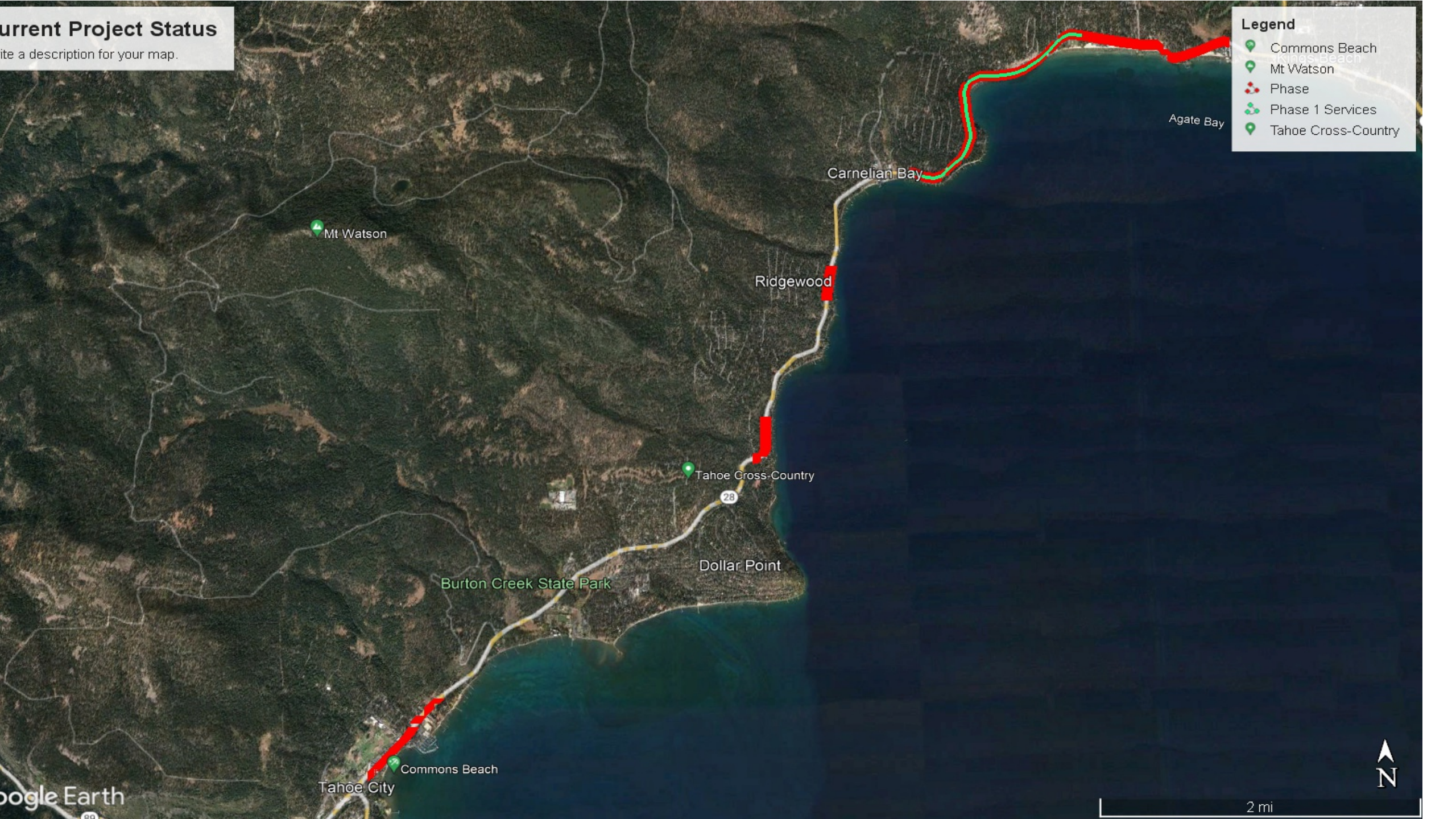


● - Caltrans CMS Boards



Current Project Status

Write a description for your map.



Legend

- Commons Beach
- Mt. Watson
- Phase
- Phase 1 Services
- Tahoe Cross-Country



End of 2023- 8pm to 6am

Legend

- 8pm to 6am Working Hours**
- Mainline average **200 LF** per Week
 - Services started in Phase 1
 - Est. 20,000 LF Complete by end of 2023

Additional lateral
progress into Kings
Beach

Rocky Ridge Rd



End of 2023- 3pm Shutdown

Legend

- Mainline
- Services

3pm Daily Shutdown

- Mainline average **500 LF** per Week
- Services complete in Phase 1 and into started Tahoe City
- Est. 24,000 LF Complete by end of 2023
- Services 60% Complete



Lateral work complete

Some mainline progress

Rocky Ridge Rd



Legend

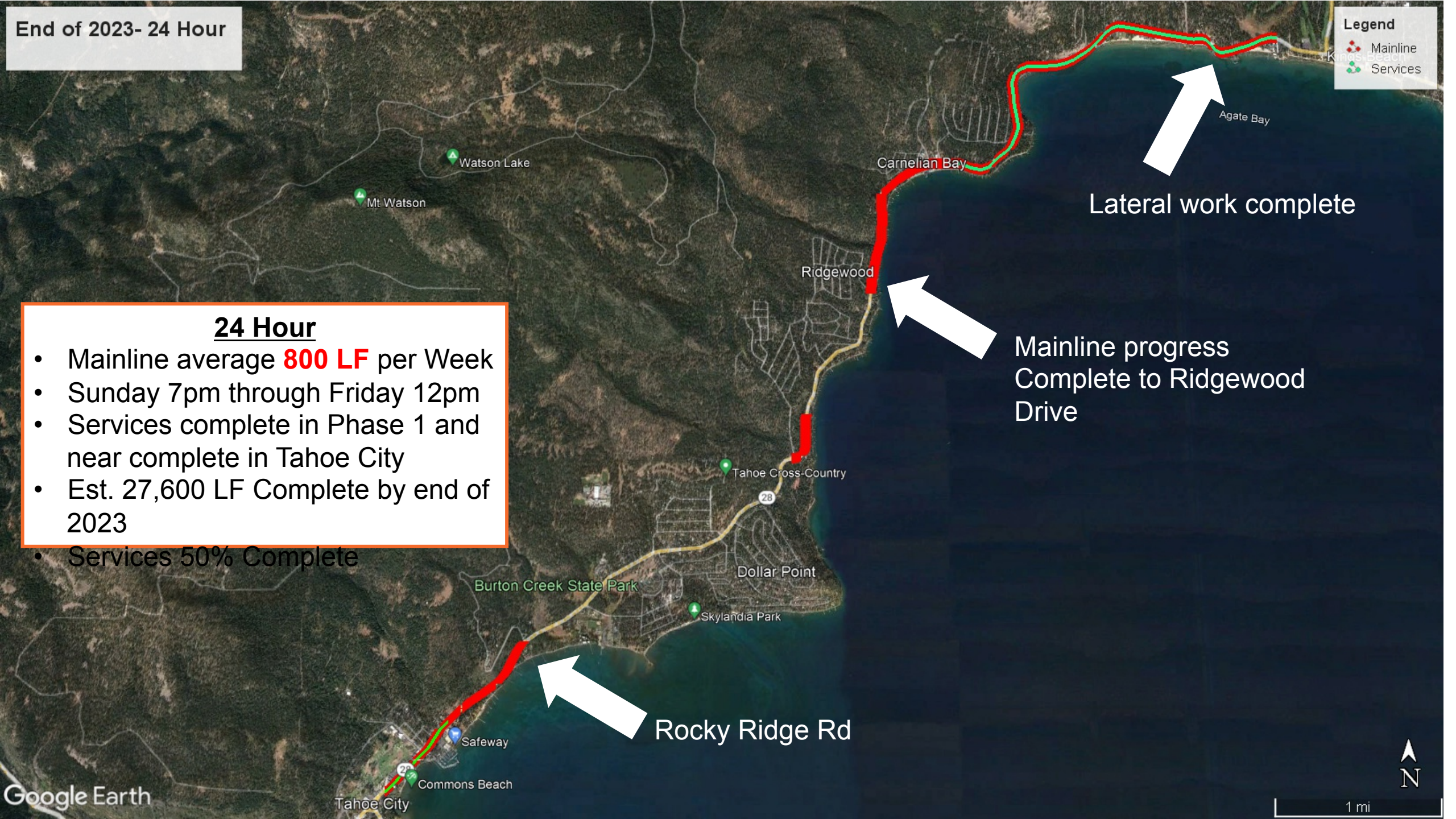
- Mainline
- Services

- 24 Hour**
- Mainline average **800 LF** per Week
 - Sunday 7pm through Friday 12pm
 - Services complete in Phase 1 and near complete in Tahoe City
 - Est. 27,600 LF Complete by end of 2023

Lateral work complete

Mainline progress Complete to Ridgewood Drive

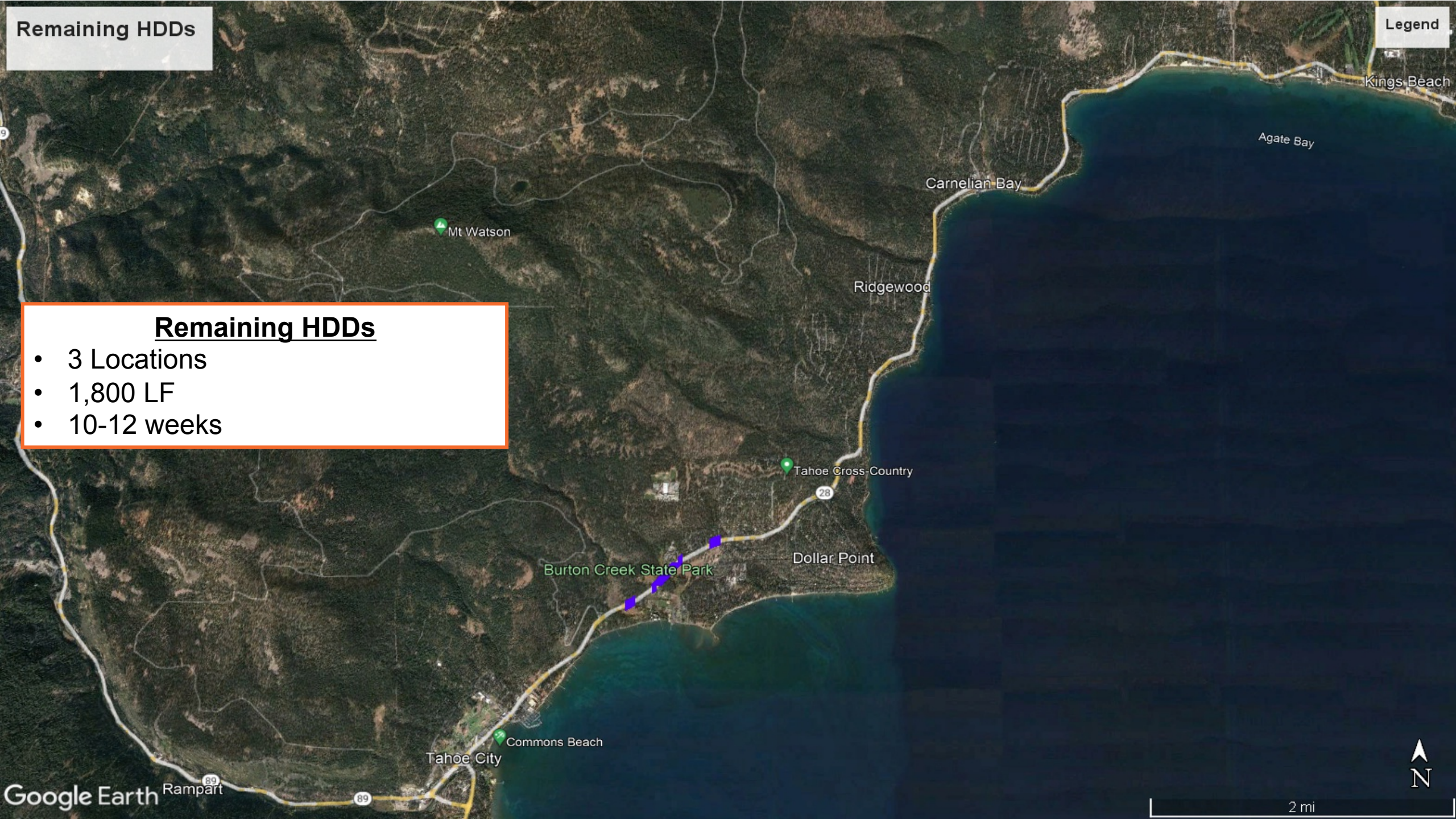
Rocky Ridge Rd



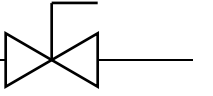
Remaining HDDs

Legend

- Remaining HDDs**
- 3 Locations
 - 1,800 LF
 - 10-12 weeks



Working Hours Assessment



- 24 Hours Sunday 7pm through Friday 12pm
 - Phase 1 mainline / services / abandonment complete
 - Phase 3 complete through Tahoe City to Rocky Ridge
 - Phase 3 services **complete** through Tahoe City
 - Phase 2 complete **through Carnelian Bay to Ridgewood**

- 3pm–7pm Daily Shutdown
 - Phase 1 mainline / services / abandonment complete
 - Phase 3 complete through Tahoe City to Rocky Ridge
 - Phase 3 services **started** in Tahoe City
 - Phase 2 complete **through Carnelian Bay**