



**LOS ANGELES COUNTY
REGIONAL PARK AND
OPEN SPACE DISTRICT**

**MEASURE
A**

**2026 Measure A Competitive Grants
Awards for Supervisorial District 4**



Planning & Design

Funding Categories 3 & 4 | Total Grant Funds: \$6,550,232



Natural Lands, Local Beaches, Water Conservation and Protection

Funding Category 3 | Total Grant Funds: \$19,667,253



Regional Recreation, Multi-use Trails and Accessibility

Funding Category 4 | Total Grant Funds: \$9,683,355

Grand Total Competitive Grants Awarded: \$35,900,840



Planning & Design 14 Grant Awards

Grantee	Awarded Project	Project Description	Grant Amount
City of Bell Gardens	Clara Park and Trail	Advances planning and design for a future park and trail on an underutilized strip of land between Florence Avenue and Clara Street through site feasibility, community-informed conceptual design, CEQA review, permitting, and preparation of a complete bid-ready PS&E package for a walking trail, bioswales, landscaping, fitness and bicycle amenities, lighting, signage, and other climate-adaptive open space improvements.	\$500,000
City of Bellflower	City of Bellflower Sports Park Project	Advances project management, community engagement, CEQA documentation, schematic design, and 30% to 50% construction documents for a new sports park in Bellflower adjacent to Riverview Park and the San Gabriel River Bike Trail, featuring pickleball courts, multipurpose courts/fields, and related site, utility, lighting, landscape, and recreation improvements.	\$482,699
City of Lomita	Lomita Sports & Community Center Plan	Completes conceptual and schematic design, construction documents, CEQA review, site assessments, community engagement, and bid-phase support for the Lomita Sports & Community Center, creating a shovel-ready plan for a multi-field athletic and community facility with accessible infrastructure, public amenities, and broad regional recreational benefits. Site was currently restricted to US Navy.	\$500,000
City of Long Beach	Washington Neighborhood Community Center	Funds site feasibility, CEQA review, community engagement, site planning, survey, and supporting architectural, civil, landscape, and cost-estimating work for the design of a new community center in Long Beach's Washington Neighborhood.	\$286,460

City of Los Angeles	Wilders Addition Park Stairs Planning and Design	Advances site-wide schematics and design development for Wilders Addition Park in San Pedro, with a focus on stairs and ADA-accessible improvements connecting the 6.9-acre park to the adjacent beach while addressing safety, erosion, and long-term public access.	\$500,000
City of Rancho Palos Verdes	Three Sisters - Filiorum Reserves Connector Project	Prepares surveys, technical studies, conceptual and preliminary engineering, community engagement, environmental compliance, permitting, and full construction documents for a trail and bridge connection between Three Sisters Reserve and Filiorum Reserve within the Palos Verdes Nature Preserve in Rancho Palos Verdes, creating a critical link in the Palos Verdes Loop Trail and improving regional trail access and connectivity.	\$500,000
City of Santa Fe Springs	Clarke Estate Development	Prepares detailed construction documents, technical studies, environmental review, and permitting packages for improvements at the six-acre Clarke Estate in Santa Fe Springs, including architectural, landscape, and engineering refinements and a potential outdoor performance and gathering space that preserves the site's historic character while expanding cultural and community use.	\$500,000
City of Santa Fe Springs	Lake Center Athletic Park Development	Prepares community-informed construction documents, technical studies, environmental review, and permitting packages for improvements at Lake Center Athletic Park in Santa Fe Springs, including new T-ball and soccer fields, bleachers, fencing, turf and grass improvements, and ADA accessibility upgrades that enhance safety, access, and recreational use.	\$500,000
City of Santa Fe Springs	New Park Development Project	Prepares community-informed construction documents, technical studies, environmental review, and permitting packages for a new park adjacent to the San Gabriel Riverbed in Santa Fe Springs, featuring multi-use walking and biking paths, landscaping, gathering areas, and potential dog park amenities that improve regional access and recreation.	\$500,000

City of South Gate	Southern Avenue Multimodal Bridge Project	Conducts a planning study for a new multimodal bridge in South Gate spanning the I-710 Freeway, Los Angeles River, Urban Orchard Park, and adjacent frontage roads, including feasibility analysis, bridge concepts and alternatives, environmental constraints review, preliminary cost estimating, implementation planning, and bilingual community engagement.	\$500,000
City of Torrance	El Nido Park Revitalization Project	Creates a community-vetted planning and design package for El Nido Park in Torrance, including conceptual and schematic design, design development, cost estimating, scheduling, and environmental readiness for new Little League fields, parking and access improvements, renovated park facilities, and potential new recreation amenities.	\$500,000
Housing Authority of the City of Los Angeles	One San Pedro Park	Supports project management, community engagement, conceptual and schematic design, and development of design documents for a proposed 2+ acre linear park along Palos Verdes Street and a 1.5-acre sports park in San Pedro, creating a community-informed roadmap and implementation-ready plans for new public open space and recreation amenities.	\$500,000
Kounkuey Design Initiative, Inc.	Community Re-envisioning of Ernest Debs Park	Creates a community-informed park redesign and greening plan for Ernest Debs Park in Bell through site analysis, concept design, CEQA coordination, and development of 90% construction documents, supported by robust outreach with residents, schools, seniors, and other community stakeholders.	\$498,073
Los Angeles Neighborhood Land Trust	Southeast LA Green Space Planning	Conducts outreach and participatory planning across Southeast Los Angeles to build city partnerships, identify and prioritize new or renovated park sites, train residents in park development, and produce three to five community-driven park concepts in very high-need communities.	\$283,000



Natural Lands, Local Beaches, Water Conservation and Protection 7 Grant Awards

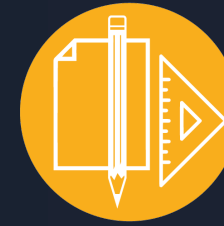
Grantee	Awarded Project	Project Description	Grant Amount
City of Artesia	Artesia Botanical Garden and Community Center	Shovel-ready, community-driven park investment with nearly \$7 million secured that will begin construction in November 2026 and use Measure A funds to complete site development, a new community building, and offsite access improvements.	\$2,000,000
City of Avalon	South Beach Restoration	Restores and protects South Beach in Avalon through beach sand replenishment, seawall repair, construction of a 100-foot groin wall, staircase restoration, and launch ramp improvements to expand public beach access, support recreation, and strengthen shoreline resilience against erosion, storms, and sea level rise.	\$2,480,000
City of Bellflower	Simms Park Regional Stormwater Capture	Constructs stormwater capture and park improvements at Simms Park, including a 4-million-gallon underground storage gallery, bioretention basin, soccer fields, native landscaping, and site amenities that expand recreation, improve water quality, and enhance environmental resilience.	\$4,000,000
City of Cudahy	Cudahy Park Renovation Project	Constructs green infrastructure and park improvements at Cudahy Park, including bioswales, permeable paving, tree planting, landscaping, sustainable irrigation, LED lighting, baseball field resurfacing, and ADA- and EV-related parking lot upgrades to improve stormwater management, accessibility, and environmental sustainability.	\$1,687,253
City of Long Beach	10th Street Greenbelt Walkway	Constructs improvements along the Pacific Electric Greenbelt including drought-tolerant landscaping, native trees and plants, a smart irrigation system, seating areas, solar-powered pathway lighting, fencing, and a new decomposed granite walking path to enhance water efficiency, safety, access, and community use.	\$1,500,000

City of Norwalk	Hermosillo Park Rehabilitation	Constructs stormwater, landscape, and community facility improvements at Hermosillo Park in Norwalk, including drainage infrastructure for a new stormwater infiltration system, expanded tree canopy and reduced impervious surfaces, and a modern community center that supports recreation, health, and environmental resilience.	\$4,000,000
Los Angeles County Department of Parks & Recreation	Lower LA River Gateway Greenway Park Phase I	Completes final design, permitting, demolition, grading, trail and bikeway improvements, utility installation, native landscaping, irrigation, and site amenities for two segments of the Lower Los Angeles River corridor—from Alondra Boulevard to 72nd Street and from Atlantic Boulevard to the I-91/Artesia Freeway—to create a publicly accessible, climate-resilient greenway that improves habitat, shade, safety, and recreation access in Southeast Los Angeles.	\$4,000,000



Regional Recreation, Multi-use Trails and Accessibility 4 Grant Awards

Grantee	Awarded Project	Project Description	Grant Amount
City of Cudahy	Cudahy Los Angeles River Area Improvement Project	Constructs landscape, irrigation, electrical, lighting, signage, and related site improvements—including grading, erosion control, plantings, pet waste stations, gates, and safety features—to enhance functionality, sustainability, and user experience along the site.	\$2,183,355
City of Long Beach	Willow Springs Trailhead Project	Constructs a regional trailhead and outdoor education area at Willow Springs Park in Long Beach with a shaded gathering plaza, trail and pathway improvements, native and drought-tolerant landscaping, solar-powered lighting, ADA-accessible parking and paths, and interpretive signage that expands access, sustainability, and environmental learning.	\$4,000,000
Los Angeles County Department of Parks & Recreation	Lower Los Angeles River Gateway Greenway Park 72nd Street Access	Transforms the 72nd Street entry to the Lower Los Angeles River Trail into an accessible, climate-resilient community gateway with upgraded trails, a new River Pavilion, native landscaping, and public amenities that improve regional connectivity, recreation, and park access in a very-high-need area.	\$2,000,000
Sustainable Labor Alliance, Inc.	Salt Lake Park Regional Greenway and Accessibility Enhancement	Constructs approximately one mile of new multi-use trail, ADA-accessible connections, bioswales, permeable paving, solar lighting, signage, and expanded tree canopy at Salt Lake Park in Huntington Park to improve recreation, safety, stormwater management, and shade.	\$1,500,000



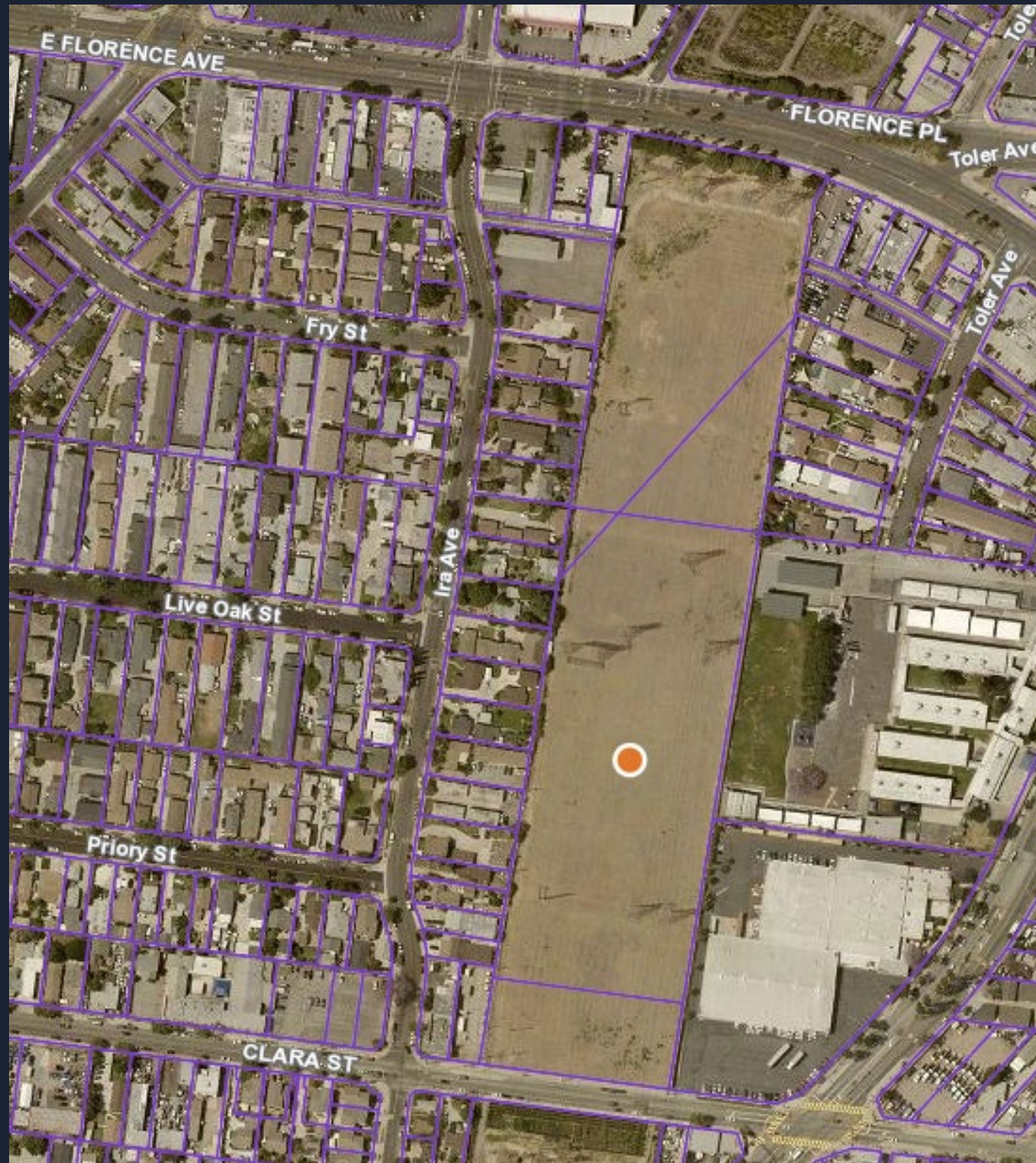
Planning and Design

City of Bell Gardens

Clara Park and Trail

\$500,000

Advances planning and design for a future park and trail on an underutilized strip of land between Florence Avenue and Clara Street through site feasibility, community-informed conceptual design, CEQA review, permitting, and preparation of a complete bid-ready PS&E package for a walking trail, bioswales, landscaping, fitness and bicycle amenities, lighting, signage, and other climate-adaptive open space improvements.





Planning and Design

City of Bellflower

City of Bellflower Sports Park

\$482,699

Advances project management, community engagement, CEQA documentation, schematic design, and 30% to 50% construction documents for a new sports park in Bellflower adjacent to Riverview Park and the San Gabriel River Bike Trail, featuring pickleball courts, multipurpose courts/fields, and related site, utility, lighting, landscape, and recreation improvements.





Planning & Design

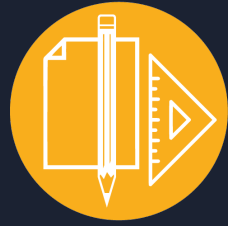
City of Lomita

Lomita Sports & Community Center Plan

\$500,000

Completes conceptual and schematic design, construction documents, CEQA review, site assessments, community engagement, and bid-phase support for the Lomita Sports & Community Center, creating a shovel-ready plan for a multi-field athletic and community facility with accessible infrastructure, public amenities, and broad regional recreational benefits. Site was previously restricted to US Navy use.





Planning & Design

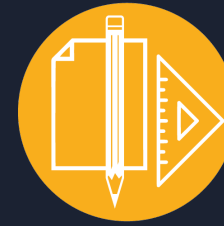
City of Los Angeles

Wilders Addition Park Stairs Planning and Design

\$500,000

Advances site-wide schematics and design development for Wilders Addition Park in San Pedro, with a focus on stairs and ADA-accessible improvements connecting the 6.9-acre park to the adjacent beach while addressing safety, erosion, and long-term public access.





Planning & Design



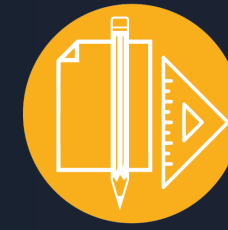
City of Long Beach

Washington Neighborhood Community Center

\$286,460

Funds site feasibility, CEQA review, community engagement, site planning, survey, and supporting architectural, civil, landscape, and cost-estimating work for the design of a new community center in Long Beach's Washington Neighborhood.





Planning & Design



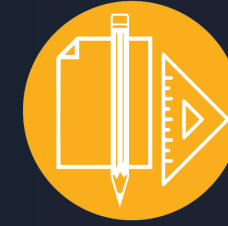
City of Rancho Palos Verdes

Three Sisters - Filiorum Reserves Connector Project

\$500,000

Prepares surveys, technical studies, conceptual and preliminary engineering, community engagement, environmental compliance, permitting, and full construction documents for a trail and bridge connection between Three Sisters Reserve and Filiorum Reserve within the Palos Verdes Nature Preserve in Rancho Palos Verdes, creating a critical link in the Palos Verdes Loop Trail and improving regional trail access and connectivity.





Planning & Design

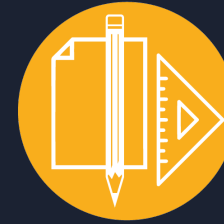
City of Santa Fe Springs

Clarke Estate Development

\$500,000

Prepares detailed construction documents, technical studies, environmental review, and permitting packages for improvements at the six-acre Clarke Estate in Santa Fe Springs, including architectural, landscape, and engineering refinements and a potential outdoor performance and gathering space that preserves the site's historic character while expanding cultural and community use.





Planning & Design



City of Santa Fe Springs

Lake Center Athletic Park Development

\$500,000

Prepares community-informed construction documents, technical studies, environmental review, and permitting packages for improvements at Lake Center Athletic Park in Santa Fe Springs, including new T-ball and soccer fields, bleachers, fencing, turf and grass improvements, and ADA accessibility upgrades that enhance safety, access, and recreational use.





Planning & Design

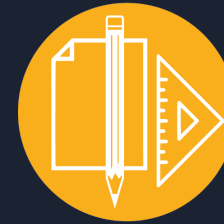
City of Santa Fe Springs

New Park Development Project

\$500,000

Prepares community-informed construction documents, technical studies, environmental review, and permitting packages for a new park adjacent to the San Gabriel Riverbed in Santa Fe Springs, featuring multi-use walking and biking paths, landscaping, gathering areas, and potential dog park amenities that improve regional access and recreation.





Planning & Design



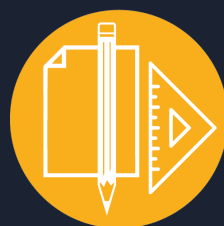
City of South Gate

Southern Avenue Multimodal Bridge Project

\$500,000

Conducts a planning study for a new multimodal bridge in South Gate spanning the I-710 Freeway, Los Angeles River, Urban Orchard Park, and adjacent frontage roads, including feasibility analysis, bridge concepts and alternatives, environmental constraints review, preliminary cost estimating, implementation planning, and bilingual community engagement.





Planning & Design



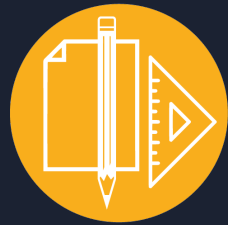
City of Torrance

El Nido Park Revitalization Project

\$500,000

Creates a community-vetted planning and design package for El Nido Park in Torrance, including conceptual and schematic design, design development, cost estimating, scheduling, and environmental readiness for new Little League fields, parking and access improvements, renovated park facilities, and potential new recreation amenities.





Housing Authority of the
City of Los Angeles

One San Pedro Park

\$500,000

Supports project management, community engagement, conceptual and schematic design, and development of design documents for a proposed 2+ acre linear park along Palos Verdes Street and a 1.5-acre sports park in San Pedro, creating a community-informed roadmap and implementation-ready plans for new public open space and recreation amenities.



104 One San Pedro Transformation Plan February 28, 2020



Planning & Design

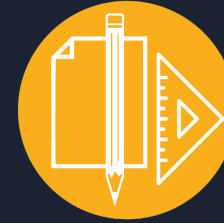
Koukuey Design Initiative, Inc.

Community Re- Envisioning of Ernest Debs Park

\$498,073

Creates a community-informed park redesign and greening plan for Ernest Debs Park in Bell through site analysis, concept design, CEQA coordination, and development of 90% construction documents, supported by robust outreach with residents, schools, seniors, and other community stakeholders.





Planning & Design

Los Angeles Neighborhood Land Trust

Southeast LA Green Space Planning

\$283,000

Conducts outreach and participatory planning across Southeast Los Angeles to build city partnerships, identify and prioritize new or renovated park sites, train residents in park development, and produce three to five community-driven park concepts in very high-need communities.





Natural Lands, Local Beaches,
Water Conservation & Protection

City of Artesia

Artesia Botanical Garden Project

\$2,000,000

Shovel-ready, community-driven park investment with nearly \$7 million secured that will begin construction in November 2026 and use Measure A funds to complete site development, a new community building, and offsite access improvements.





Natural Lands, Local Beaches,
Water Conservation & Protection

City of Avalon

South Beach Restoration

\$2,480,000

Restores and protects South Beach in Avalon through beach sand replenishment, seawall repair, construction of a 100-foot groin wall, staircase restoration, and launch ramp improvements to expand public beach access, support recreation, and strengthen shoreline resilience against erosion, storms, and sea level rise.





Natural Lands, Local Beaches,
Water Conservation & Protection



City of Bellflower

Simms Park Regional Stormwater Capture Project

\$4,000,000

Constructs stormwater capture and park improvements at Simms Park, including a 4-million-gallon underground storage gallery, bioretention basin, soccer fields, native landscaping, and site amenities that expand recreation, improve water quality, and enhance environmental resilience.





Natural Lands, Local Beaches,
Water Conservation & Protection

City of Cudahy

Cudahy Park Renovation Project

\$1,687,253

Constructs green infrastructure and park improvements at Cudahy Park, including bioswales, permeable paving, tree planting, landscaping, sustainable irrigation, LED lighting, baseball field resurfacing, and ADA- and EV-related parking lot upgrades to improve stormwater management, accessibility, and environmental sustainability.





Natural Lands, Local Beaches,
Water Conservation & Protection

City of Long Beach

10th Street Greenbelt Walkway

\$1,500,000

Constructs improvements along the Pacific Electric Greenbelt including drought-tolerant landscaping, native trees and plants, a smart irrigation system, seating areas, solar-powered pathway lighting, fencing, and a new decomposed granite walking path to enhance water efficiency, safety, access, and community use.





Natural Lands, Local Beaches,
Water Conservation & Protection



City of Norwalk

Hermosillo Park Rehabilitation

\$4,000,000

Constructs stormwater, landscape, and community facility improvements at Hermosillo Park in Norwalk, including drainage infrastructure for a new stormwater infiltration system, expanded tree canopy and reduced impervious surfaces, and a modern community center that supports recreation, health, and environmental resilience.





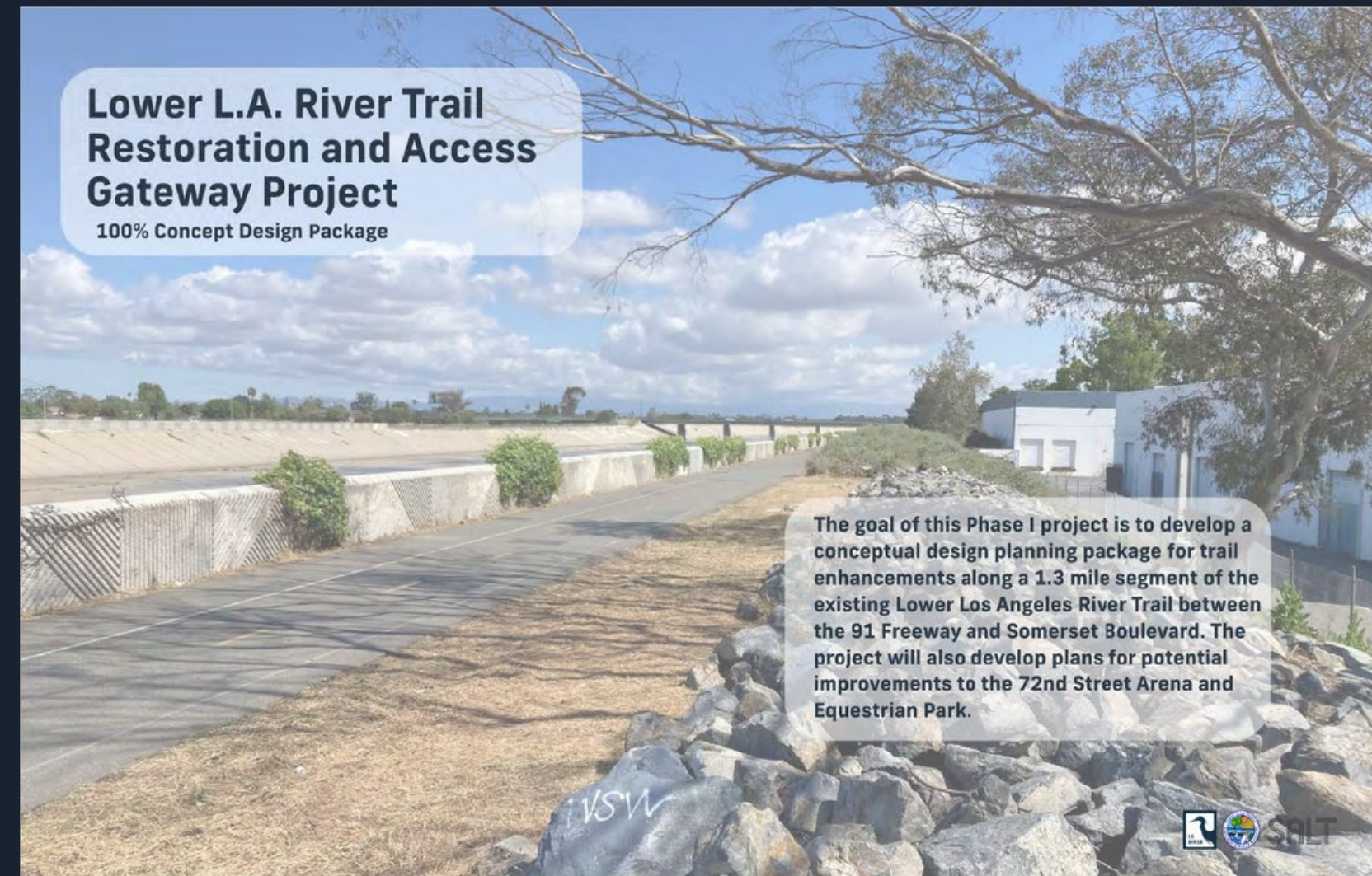
Natural Lands, Local Beaches,
Water Conservation & Protection

Los Angeles County Department of
Parks and Recreation

Lower LA River Gateway Greenway Park Phase I

\$4,000,000

Completes final design, permitting, demolition, grading, trail and bikeway improvements, utility installation, native landscaping, irrigation, and site amenities for two segments of the Lower Los Angeles River corridor—from Alondra Boulevard to 72nd Street and from Atlantic Boulevard to the I-91/Artesia Freeway—to create a publicly accessible, climate-resilient greenway that improves habitat, shade, safety, and recreation access in Southeast Los Angeles.





Regional Recreation,
Multi-use Trails & Accessibility



City of Cudahy

Cudahy Los Angeles River Area Improvement Project

\$2,183,355

Constructs landscape, irrigation, electrical, lighting, signage, and related site improvements—including grading, erosion control, plantings, pet waste stations, gates, and safety features—to enhance functionality, sustainability, and user experience along the site.





Regional Recreation,
Multi-use Trails & Accessibility



City of Long Beach

Willow Springs Trailhead Project

\$4,000,000

Constructs a regional trailhead and outdoor education area at Willow Springs Park in Long Beach with a shaded gathering plaza, trail and pathway improvements, native and drought-tolerant landscaping, solar-powered lighting, ADA-accessible parking and paths, and interpretive signage that expands access, sustainability, and environmental learning.



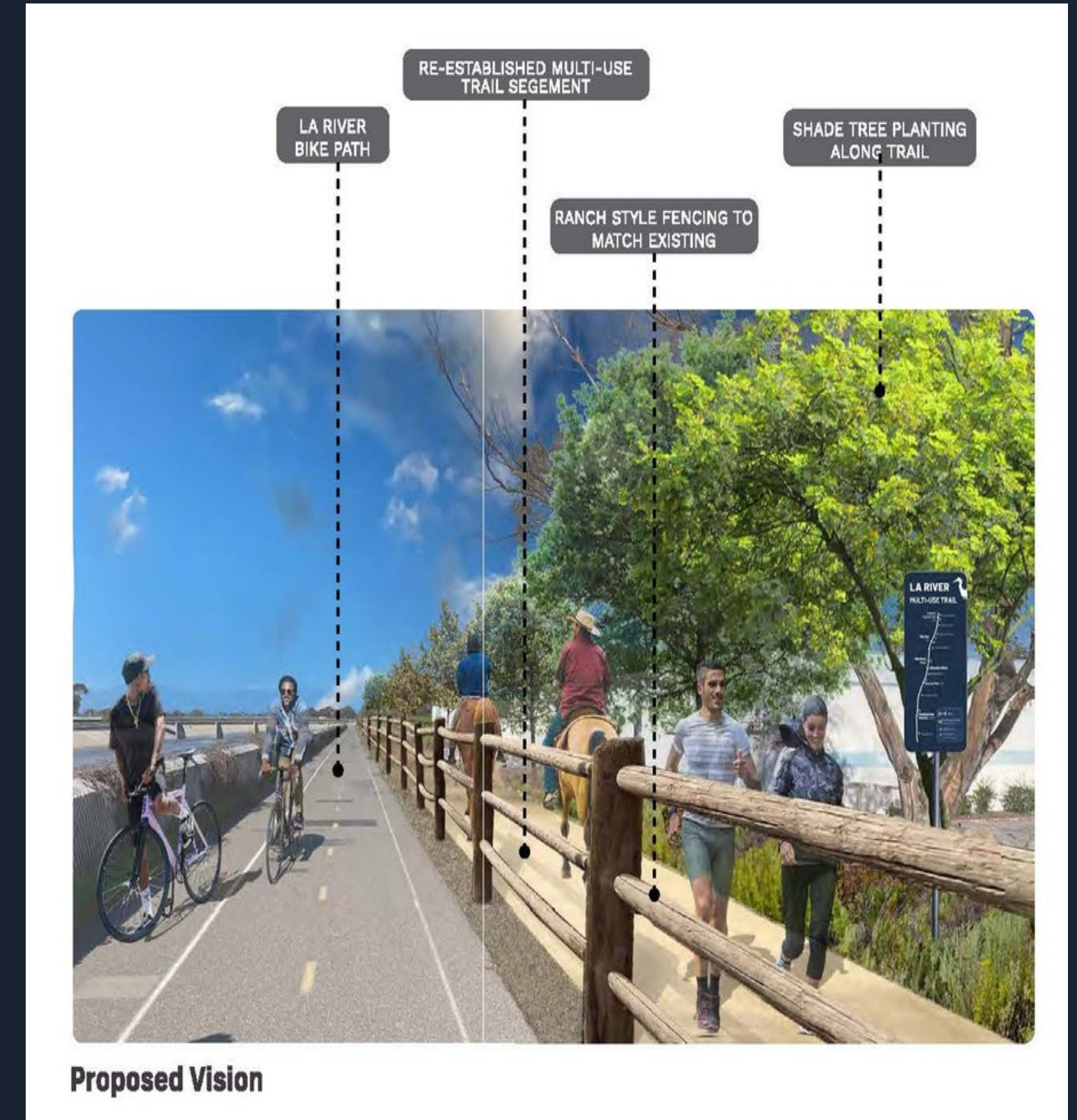


Regional Recreation,
Multi-use Trails & Accessibility

Los Angeles County
Department of Parks and Recreation

Lower Los Angeles River Gateway Greenway Park 72nd Street Access **\$2,000,000**

Transforms the 72nd Street entry to the Lower Los Angeles River Trail into an accessible, climate-resilient community gateway with upgraded trails, a new River Pavilion, native landscaping, and public amenities that improve regional connectivity, recreation, and park access in a very-high-need area.



Proposed Vision





Regional Recreation,
Multi-use Trails & Accessibility



Sustainable Labor Alliance, Inc.

Salt Lake Park Regional Greenway and Accessibility Enhancement

\$1,500,000

Constructs approximately one mile of new multi-use trail, ADA-accessible connections, bioswales, permeable paving, solar lighting, signage, and expanded tree canopy at Salt Lake Park in Huntington Park to improve recreation, safety, stormwater management, and shade.

