

**JOIN PUBLIC HEALTH'S**

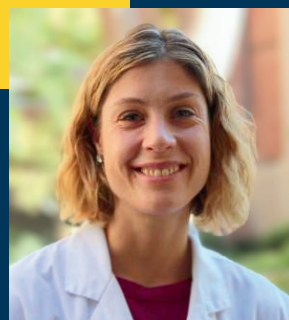
# **VIRTUAL TOWNHALL ON LONG COVID**

APRIL 17 | THURSDAY | 6:30 PM

Join the LA County Long COVID Town Hall where public health experts and community partners will answer questions on the long-term effects of COVID-19.

**This interactive event  
will cover:**

- Symptoms
- Care options
- Rights
- Available support services



**Dr. Annabelle De St. Maurice**

Unit Chief Community Outbreak  
LA County Department of Public Health



**Dr. Nisha Viswanathan**

Director, Long COVID Program  
UCLA Health



**Reda Roundtree**

Resident with Long COVID



**Dr. Tony Kuo**

Director, Division of Chronic Disease and  
Injury Prevention  
LA County Department of Public Health



**HOST & MODERATOR**

**Dr. Priya Batra**

Deputy Director, Health Promotion Bureau  
LA County Department of Public Health

**Livestreamed on:**

-  <http://facebook.com/lapublichealth>
-  <https://x.com/lapublichealth>
-  <youtube.com/lapublichealth>

**Submit questions at:**

[TinyURL.com/LongCOVID-Townhall](https://tinyurl.com/LongCOVID-Townhall)

