

# Best Practices for Inclusivity: LGBTQIA+ Health and Vaccine Recommendations

Andrea Renteria, MPH

Marcus Carreon, MSc

Michelle Vazquez Godinez, MA



# Agenda

- Best Practices for Creating an Inclusive Environment in Your Office
- Collecting SOGI Data at the Provider Level
- Vaccine Recommendations for LGBTQIA+
- Resources
- Find us at Pride!





## Best Practices for Inclusivity

- Research indicates that one of the largest barriers to immunization for the LGBTQIA+ community is fear of an unwelcoming environment and past medical trauma. Create a safe and inclusive environment that fosters trust and equality for all individuals! Being an advocate for LGBTQIA+ includes:
  - Using gender neutral pronouns and inclusive language
  - Collecting Sexual Orientation & Gender Identity data and asking for preferred names
  - Placing visual cues in your office/clinics that show that your practice is a safe(r) place, such as a nondiscrimination statement and/or posters from nonprofit LGBTQIA or HIV/AIDS organizations
  - Displaying inclusivity! Use flyers and pamphlets in waiting rooms for LGBTQIA+ patients that cover a range of topics, such as mental health, transgender health, and immunizations.

## Examples of Flyers and Visual Cues





## Best Practices for Inclusivity

- Discuss immunizations at every appointment, not just during annual wellness visits
- As a trusted medical provider, your recommendation is a crucial part of vaccine uptake for LGBTQIA+ individuals.
  - Recent studies find that LGBTQIA+ affirming clinics and provider recommendation increased vaccine uptake (Hep A and B) among gay, bisexual, and transgender people.
  - Practice Cultural Humility
    - In the medical context, cultural humility is the process of being aware of how an individuals' culture can impact their health behaviors, in turn using this awareness to cultivate sensitive and affirming approaches in treating patients
  - Engage in continuous education
    - Terms and recommendations are based on the most recent research, but it is important to dedicate time to continuous education to make sure you are up-to-date with inclusivity recommendations
    - This topic continuously evolves, and we encourage you to be adaptive as new best practices and recommendations emerge
    - National LGBTQIA+ Health Education Center has on-demand trainings and publications (CME credit available!)

1. <https://fenwayhealth.org/new-studies-find-that-lgbtq-affirming-health-care-settings-combined-with-recommendations-from-providers-can-increase-uptake-of-hepatitis-a-b-vaccines-among-lgbtq-people/#:~:text=Specialty%2FOther-,New%20studies%20find%20that%20LGBTQ%2Daffirming%20health%20care%20settings%2C%20combined,B%20vaccines%20among%20LGBTQ%20people>

2. <https://doi.org/10.3402%2Fmeo.v21.30908>



## **SOGI Data**

Sexual Orientation and Gender Identity (SOGI)

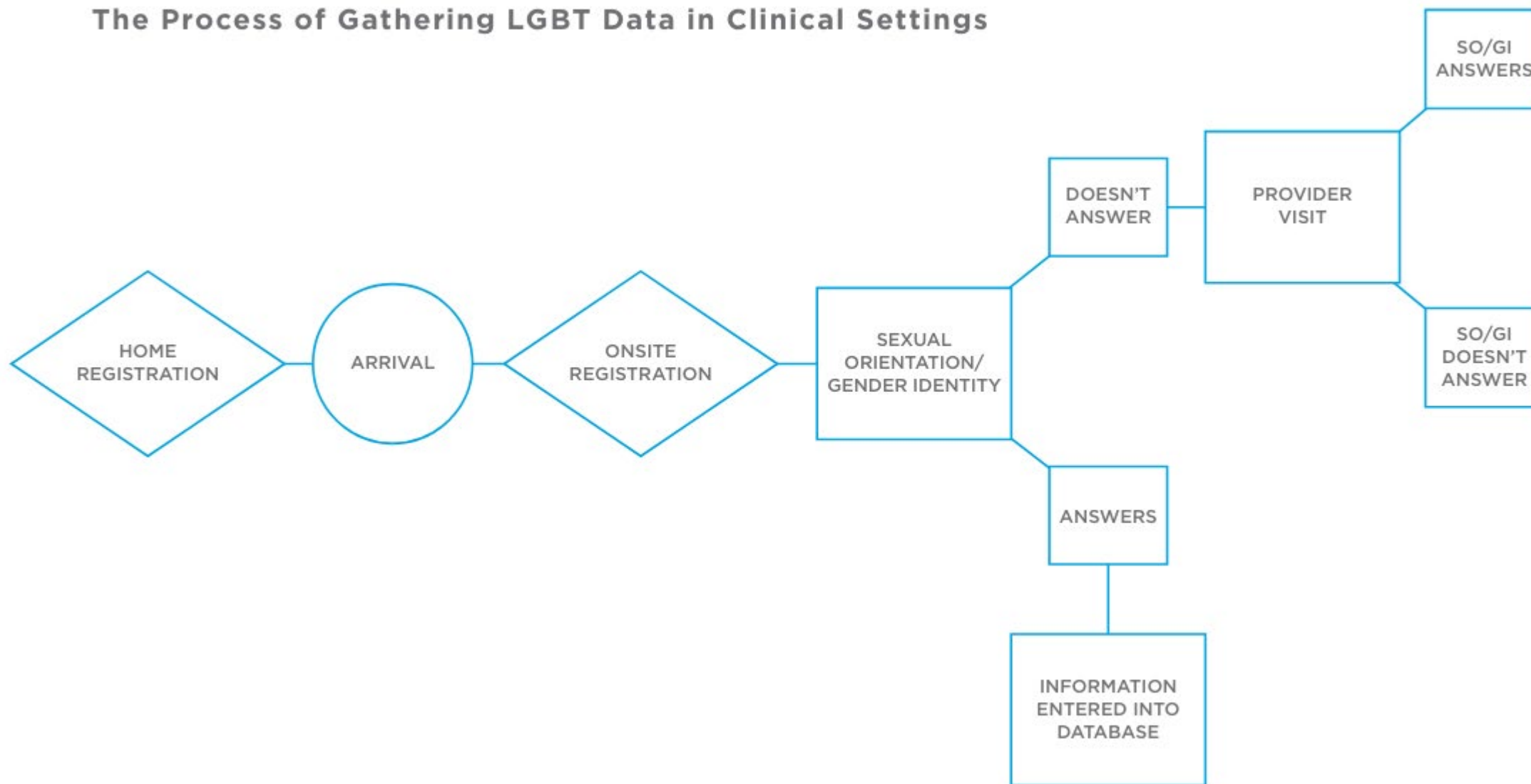


# Collecting SOGI Data at the Provider Level

- What is SOGI Data?
  - Sexual Orientation and Gender Identity (SOGI)
- Why is collecting SOGI data important?
  - ABA 959 “Lesbian, Gay, Bisexual, and Transgender Disparities Reduction Act 2015
    - Promoting Inclusivity and Equity
    - Tailoring services and interventions
    - Identifying Disparities
    - Enhancing Research and Knowledge
    - Advocacy and Development
- Key take away:
  - Overall, collecting SOGI data is essential for creating more inclusive and equitable societies where LGBTQIA+ individuals can thrive without facing discrimination or marginalization.



## The Process of Gathering LGBT Data in Clinical Settings







## Perceived SOGI Challenges

- Privacy Concerns
- Cultural Sensitivity
- Legal and Policy Barriers





## Example of SOGI Data

<p>Gender Identity: Tell us how you see yourself in terms of gender:</p> <ul style="list-style-type: none"><li>- Man</li><li>- Woman</li><li>- Transgender man/Transmasculine</li><li>- Transgender woman/Transfeminine</li><li>- Non-binary (gender queer)</li><li>- Another Category (Two-Spirit)</li><li>- Undecided/unknown currently</li><li>- Not sure what this questions means</li><li>- Prefer not to answer</li></ul>	<p>Sexual orientation: What kind of people do you find yourself attracted to. If any of the options describe how you feel please select:</p> <ul style="list-style-type: none"><li>- Heterosexual/straight</li><li>- Gay or lesbian</li><li>- Bisexual or pansexual</li><li>- Something else (ex: queer, asexual)</li><li>- Undecided/ unknown currently</li><li>- Not sure what this question means</li><li>- Prefer not to answer</li></ul>
<p>Sex: What was your sex listed at birth:</p> <ul style="list-style-type: none"><li>- Male</li><li>- Female</li><li>- X</li><li>- Another Category (ex: Intersex)</li><li>- Prefer not to answer</li></ul>	<p>Pronoun Preference: What pronouns do you prefer?</p> <ul style="list-style-type: none"><li>- He/him/his</li><li>- She/her/hers</li><li>- They/them/theirs</li><li>- Ze/zir/zirs</li><li>- Other (please specify)</li></ul>



# Vaccine Recommendations for the LGBTQIA+ Community





## Vaccine Recommendations for LGBTQIA+

- Many vaccine recommendations for the LGBTQIA+ community pertain specifically to MSM (Men Who Have Sex With Men) due to a *potential* elevated risk for STDs/HIV and possible disease complications from immunodeficiency associated with HIV disease.
  - If a patient has a weakened immune system, vaccines become even more crucial due to their susceptibility to infection and the elevated risk of illness affecting them more severely.
- This elevated risk *may* come from behavioral factors, including number of concurrent partners, condomless sex, anal sex, or substance use. These factors, along with sexual network or higher community disease prevalence, *can* increase the risk for STIs and HIV among MSM compared with other groups.

1. <https://www.cdc.gov/std/life-stages-populations/msm.htm>

2. [https://hivinfo.nih.gov/understanding-hiv/fact-sheets/hiv-and-covid-19#:~:text=The%20human%20immunodeficiency%20virus%20\(HIV,a%20person%20to%20be%20immunocompromised.](https://hivinfo.nih.gov/understanding-hiv/fact-sheets/hiv-and-covid-19#:~:text=The%20human%20immunodeficiency%20virus%20(HIV,a%20person%20to%20be%20immunocompromised.)

3. [https://www.cdc.gov/std/treatment-guidelines/msm.htm#:~:text=Therefore%2C%20sexual%20orientation%20as%20well,groups%20\(183%2C184\).](https://www.cdc.gov/std/treatment-guidelines/msm.htm#:~:text=Therefore%2C%20sexual%20orientation%20as%20well,groups%20(183%2C184).)

## Vaccine Recommendations for LGBTQIA+

- Regularly recommended vaccines include Tdap, COVID, and Flu.
- Additional recommended vaccines may include:
  - HPV
  - Mpox
  - Hepatitis A
  - Hepatitis B
  - Meningococcal





## Vaccine Recommendations for LGBTQIA+

- Vaccines recommendations are centered around behaviors, *rather than gender identity and sexuality alone*.
- Providers are encouraged to have discussions with their patients to identify their unique vaccine needs. These discussions help foster individual care plans for patients to improve LGBTQIA+ health.
- Individuals within the LGBTQIA+ community are still strongly encouraged to receive all recommended vaccines, including COVID and Flu.

## DPH Resources

**PEAK PROTECTION  
WITH A PAIR  
OF MPOX DOSES**

AVAILABLE  
♥  
DISCREET



**EVERYDAY  
SAFE**



COUNTY OF LOS ANGELES  
**Public Health**

**PLAY  
CONFIDENTLY  
GET TWO  
MPOX DOSES**

AVAILABLE  
♥  
DISCREET



**EVERYDAY  
SAFE**



COUNTY OF LOS ANGELES  
**Public Health**

**TWO MPOX DOSES  
FOR PEAK  
PROTECTION**

AVAILABLE  
♥  
DISCREET



**EVERYDAY  
SAFE**



COUNTY OF LOS ANGELES  
**Public Health**

1. <http://publichealth.lacounty.gov/media/monkeypox/resources.htm>



# Come find us at Pride 2024!

Name of Event	Date of Event	Time of Event
Venice Pride Block Party	Friday, May 31, 2024	5:00PM-11:00PM
WEHO Pride Day 1	Saturday, June 1, 2024	12:00PM-8:00PM
WEHO Pride Day 2	Sunday, June 2, 2024	12:00PM-8:00PM
LA Pride in the Park	Saturday, June 8, 2024	1:00PM-11:00PM
AIDS Life Cycle 2024 Finish Line	Saturday, June 8, 2024	10:30AM-4:00PM
Trans Pride 2024	Saturday, June 15, 2024	12:00PM-6:00PM
Whittier Pride	Saturday, June 15, 2024	11:00AM-6:00PM
East Los Angeles Civic Center - Queer Mercado	Saturday, June 15, 2024	10:00AM-4:00PM
Pride on the Promenade	Saturday, June 22, 2024	2:00PM-8:00PM
Inglewood Pride Festival	Saturday, June 22, 2024	3:00PM-8:00PM
San Fernando Valley Pride	Saturday, June 29, 2024	1:00PM-5:00PM
37th Annual Black Pride Beach Party	Saturday, June 29, 2024	9:00AM-6:00PM
San Pedro Pride	Saturday, August 24, 2024	11:00AM-7:00PM
Burbank PRIDE 2024	Saturday, September 28, 2024	12:00PM-6:00PM
Santa Clarita Valley Pride Picnic	TBD	TBD
Compton Pride	TBD	TBD
South LA PRIDE	TBD	TBD
East Los PRIDE	TBD	TBD
DTLA PROUD	TBD	TBD





## Resources

1. [EZIZ Talking with Patients in LGBTQ Community about COVID-19 Vaccines](#)
2. [Equality California's Diversity, Equity, and Inclusion Training Courses](#)
3. [American Medical Association Creating LGBTQ Friendly Services](#)
4. [Vaccinate All 58 LGBTQ Outreach](#)
5. [Barriers To COVID-19 Vaccine Uptake in LGBTQIA Community](#)
6. [Health and Human Services Vaccines for Gay and Bisexual Men](#)
7. [National LGBTQIA+ Health Education Center](#)
8. [ABA 959 - Lesbian, Gay, Bisexual, and Transgender Disparities Reduction Act 2015](#)
9. [Ready Set go! – Guidance and Tips For Collecting SOGI Data](#)
10. [DPH Resources MPOX Page](#)

Thank You!

