



NOTICE TO POMONA NORTH STATION USERS: Temporary Parking Lot Changes

OCTOBER 1 - DECEMBER 31, 2024 (CITY OF POMONA)

CONSTRUCTION ACTIVITY

As part of the 9.1-mile Foothill Gold Line light rail project, crews continue rebuilding the Pomona North Metrolink parking area. The western portion of the parking lot and the Fulton Rd. entrance have reopened and crews will now close the eastern section of the parking lot as well as the Santa Fe St. entrance to complete work in those areas. The closure will temporarily eliminate vehicular access and parking on the east side. The western area will be open and accessible from Fulton Rd. only, providing approximately 152 standard spaces and 6 handicap spaces. There will be no vehicular access allowed through the Santa Fe St entrance or the closed parking area, but pedestrian access via Santa Fe St. will be maintained. **Use Fulton Rd. for all vehicular and Metrolink parking and ticketing access.**

WHEN

Beginning Tuesday, October 1st, thru Tuesday, December 31st, 2024

- Work Hours: 7:00 AM - 8:00 PM, Monday thru Saturday. NOTE: Occasional longer work hours and construction on Sundays may be performed during the period.

WHERE

Construction activities will continue to take place within the closed parking area shown below in red - on the eastern side of the Metrolink parking lot. Parking will open and available on the western side of the lot, accessible from Fulton Rd. only.

TRAFFIC ADVISORIES

Vehicles accessing the Pomona North station and parking must use the Fulton Rd. entrance, which is ONLY accessible from northbound Fulton Rd. (the Fulton Rd. entrance is right in/right out only). Pedestrian access will remain available at both entrances, Fulton Rd. and Santa Fe St.

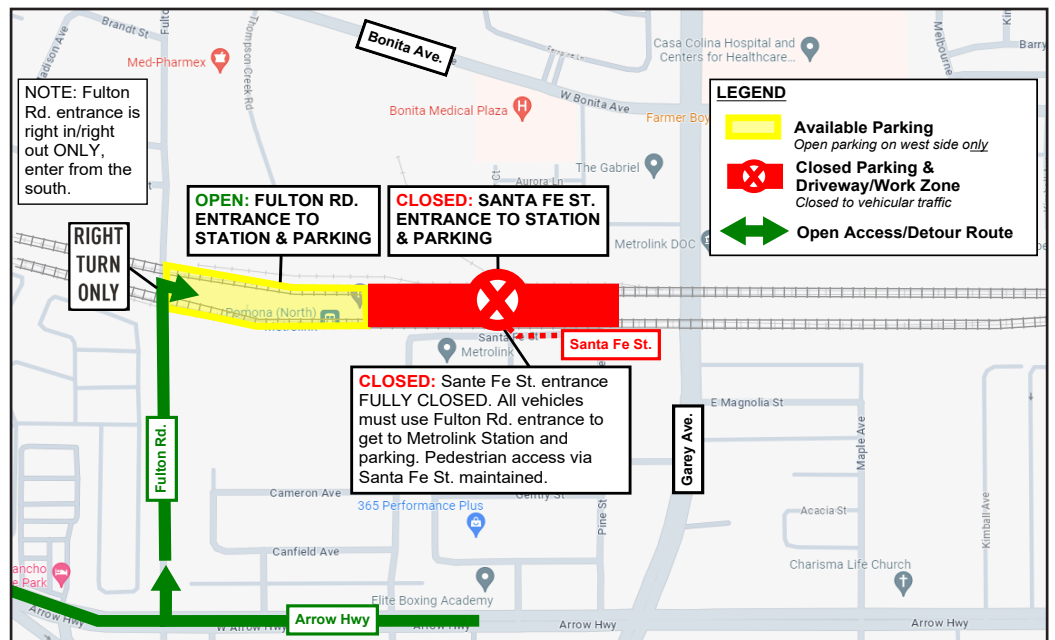
NOTE TO PARKING LOT USERS

Typical noise from construction equipment will be produced near the active work zones, including the use of trucks and light plants. Large equipment and deliveries will be coming and going from the work zones regularly.

STAY SAFE

Please obey all posted construction signs and do not enter the construction work zone.

Para información en español por favor llame o envíe un mensaje de texto a (626) 513-5788.



QUESTIONS?

Project Construction Questions Hotline: (626) 513-5788 **Email:** CommunityRelations@Kiewit-Parsons.com

General Project Questions: (626) 471-9050 **Email:** PublicAffairs@Foothillgoldline.org

Stay ahead of construction, sign up for alerts: www.foothillgoldline.org

**Construction schedules are subject to change for various reasons, including, but not limited to, weather conditions and unforeseen delays.*