



Foothill Gold Line

KIEWIT-PARSONS, A JV

-Glendora to Pomona-

# NOTICE: Temporary Lane Configuration

## BONITA AVE. & CATARACT AVE. INTERSECTION (CITY OF SAN DIMAS)

### AUGUST 14 - DECEMBER 31, 2022

#### CONSTRUCTION ACTIVITY

As part of the Foothill Gold Line light rail project, KPJV crews **will open the Bonita Ave. & Cataract Ave. intersection in the city of San Dimas on Sunday, August 14** under a temporary lane configuration with restricted turns. The temporary lane configuration is for roadway safety as crews work to complete the street median, install new track and traffic signals, and continue work on the new light rail bridge. Access to Downtown San Dimas businesses on Bonita Ave. and residential access will be maintained at all times.

#### WHEN

Beginning Sunday, August 14 (when Bonita Ave./Cataract Ave. Intersection reopens) & continuing thru December 31, 2022

- Crews plan to work daily from 7:00 AM - 5:00 PM, however, longer hours and Sunday work may be required.

#### TRAFFIC ADVISORIES

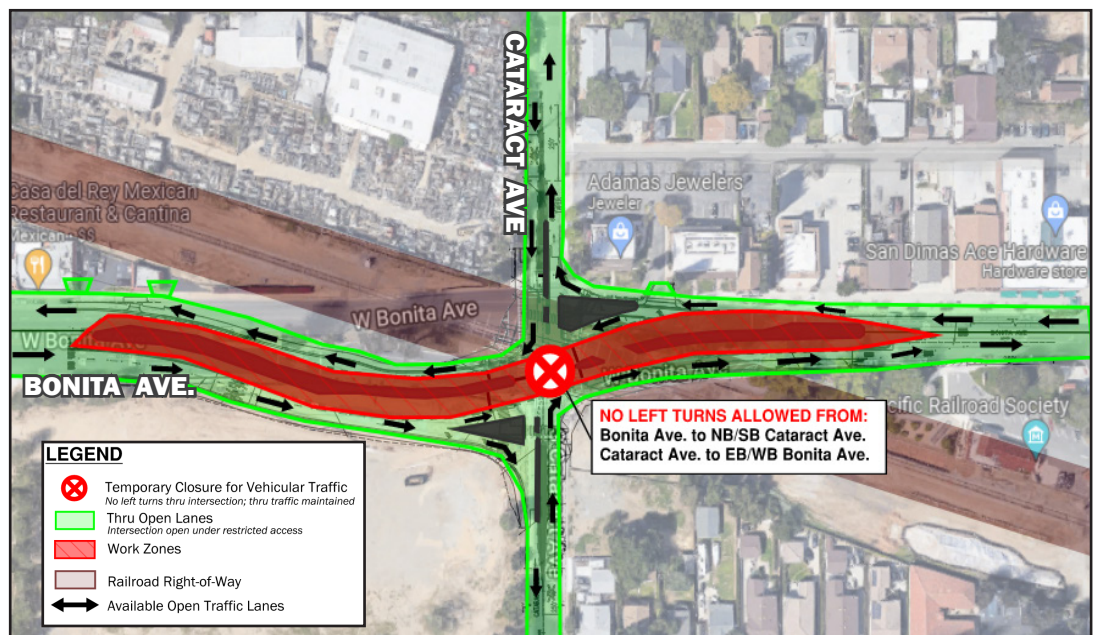
- Bonita Ave. (eastbound and westbound) will open to thru traffic, with right turns available to northbound and southbound Cataract Ave.
  - ✓ No left turns will be allowed from Bonita Ave. to northbound or southbound Cataract Ave.
- Cataract Ave. will not be open to thru traffic across Bonita Ave, but right turns will be available from Cataract Ave. to eastbound and westbound Bonita Ave.
  - ✓ No left turns will be allowed from Cataract Ave. to eastbound or westbound Bonita Ave.

#### PLAN YOUR ROUTE AND BE PREPARED

The Bonita Ave. & Cataract Ave. intersection will open under a temporary lane reconfiguration with Bonita Ave. open to thru traffic and only right turns permitted from both streets. Left turns from both streets will not be allowed during this temporary realignment. Please see map below.

#### NOTE TO RESIDENTS / BUSINESS OWNERS

- Noise from construction equipment will be produced near the active work zones.
- Foothill Transit Lines WB 492 & EB 492 stops will be temporarily relocated as follows.
  - ✓ **Temp WB 492**  
**Bus Stop:** Bonita Ave. & Pony Express
  - ✓ **Temp EB 492**  
**Bus Stop:** Bonita Ave. & Eucla Ave
- For additional relocated stop information: Foothill Transit Bus: (800) RIDE-INFO/foothilltransit.org



#### STAY SAFE

Please obey all posted construction signs and do not enter the construction work zone.

**Para información en español por favor llame o envíe un mensaje de texto a (626) 513-5788.**

#### QUESTIONS?

**Project Construction Questions Hotline:** (626) 513-5788 **Email:** CommunityRelations@Kiewit-Parsons.com

**General Project Questions:** (626) 471-9050 **Email:** PublicAffairs@Foothillgoldline.org

**Stay ahead of construction, sign up for alerts: [www.foothillgoldline.org](http://www.foothillgoldline.org)**

*\*Construction schedules are subject to change for various reasons, including, but not limited to, weather conditions and unforeseen delays.*