

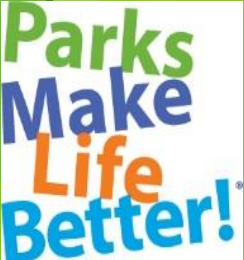
# BERKELEY MARINA CAPITAL PROJECTS



Nelson Lam  
Supervising Civil Engineer  
Department of Parks, Recreation & Waterfront

Berkeley Marina Slipholder Meeting

March 16, 2024



# Vessel Temporary Relocation Process

## Docks D&E Replacement Project

- Affects Docks D & E
- Lockers will be permanently removed
- Vessels will be relocated to other docks by end of July, 2024.
- Anticipated duration: Until completion of new D&E construction, anticipated Dec, 2025

## Dredging

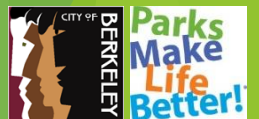
- Current planning will affect Docks B, C, H, I and O
- Vessels on these docks will be relocated to other docks around September/October, 2024  
Anticipated relocation duration: about 1 to 2 weeks

## O-Dock Electrical Upgrade

- Affects Dock O
- Liveboards will be relocated. Limited vacant slips will be available for remaining vessels
- Boats remaining on O dock will have the power surcharge portion of their slip fee credited back to their account
- Anticipated duration: about 12 week

## Vessel Relocation Notifications

Marina Office will notify affected slipholders 2 to 3 weeks in advance of the relocation





# Topics

## A. Projects in Planning/Design Phase

1. Cesar Chavez Park Perimeter Pathway
2. Cesar Chavez Park Restroom (On Spinnaker Way)
3. South Cove Sailing Basin Dredging Study

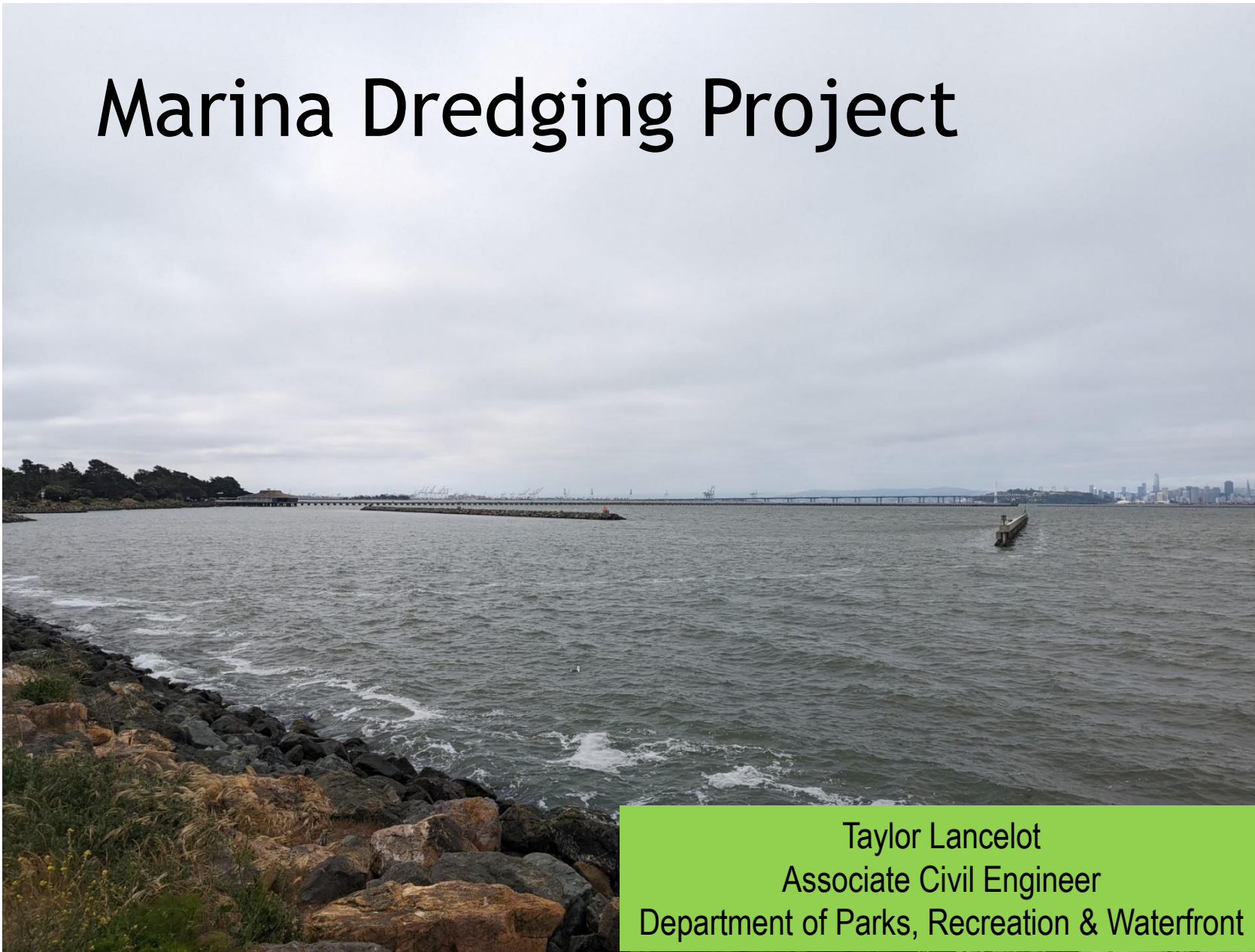
## B. Upcoming Construction Projects

1. Entrance and Main Channel Dredging
2. Docks D&E Replacement
3. O-Dock Electrical Upgrade
4. Vessel Temporary Relocation Process
5. K-Dock Restroom Renovation





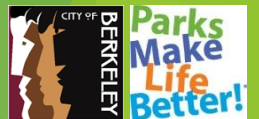
# Marina Dredging Project



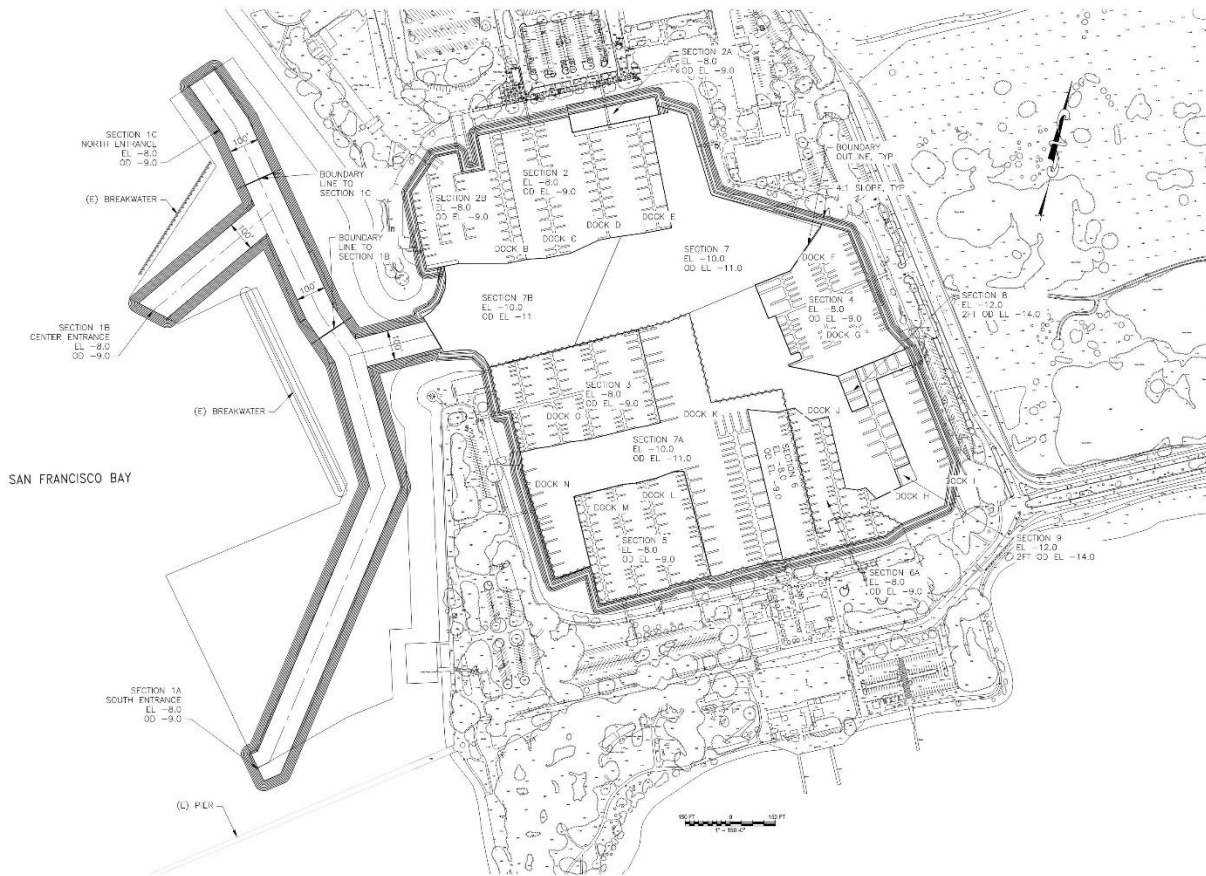
Taylor Lancelot  
Associate Civil Engineer  
Department of Parks, Recreation & Waterfront

Marina Capital Projects  
Slipholder Meeting

March 16, 2024



# Project Summary

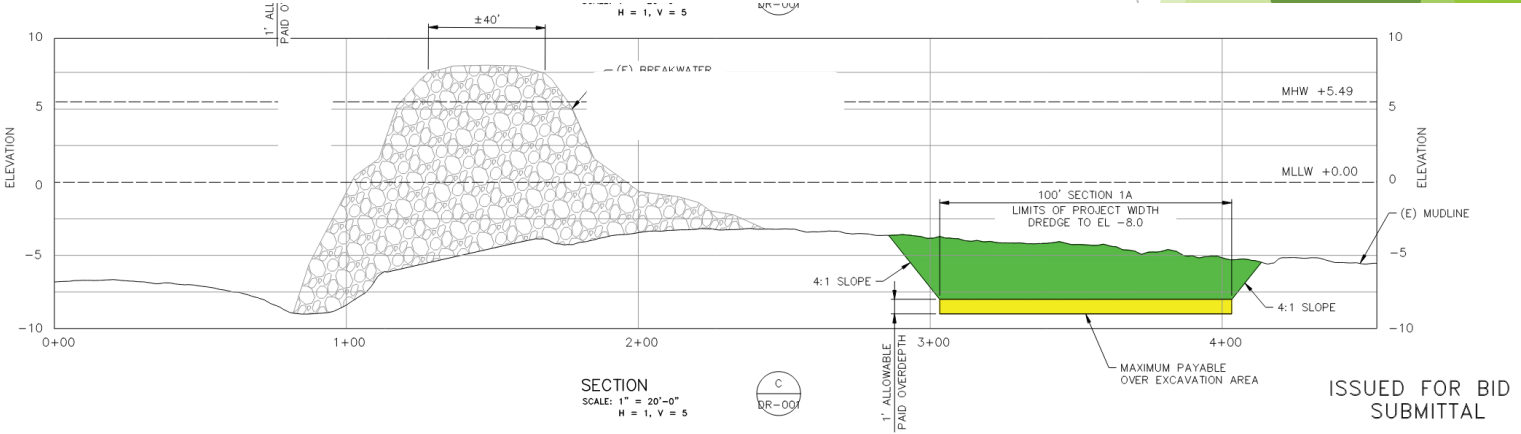
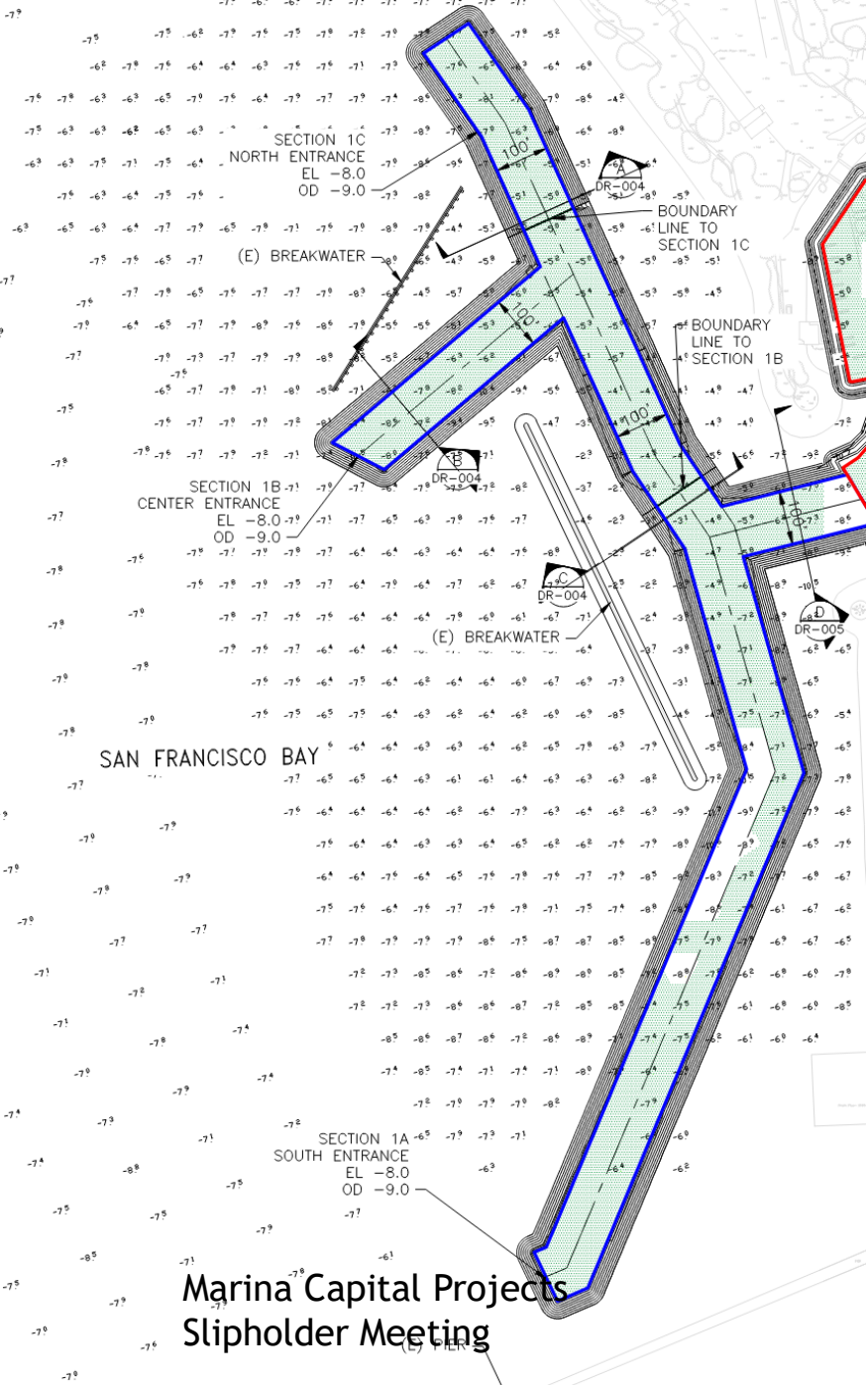


- ▶ Project proposes to dredge a total of 105,554 CY of material primarily from the three marina entrances and key locations within the inner harbor improving access and usability.
- ▶ Funded entirely by a grant from California State Coastal Conservancy

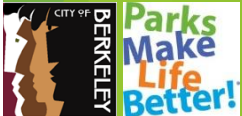


# Marina Entrance

- Approximately 40,000 CY of material will be dredged from the three marina entrances
- Depth will be restored to -8' MLLW within the channel outline shown
- 24-hour dredging
- Access will be somewhat limited but the southern entrance will not be occupied during low tides

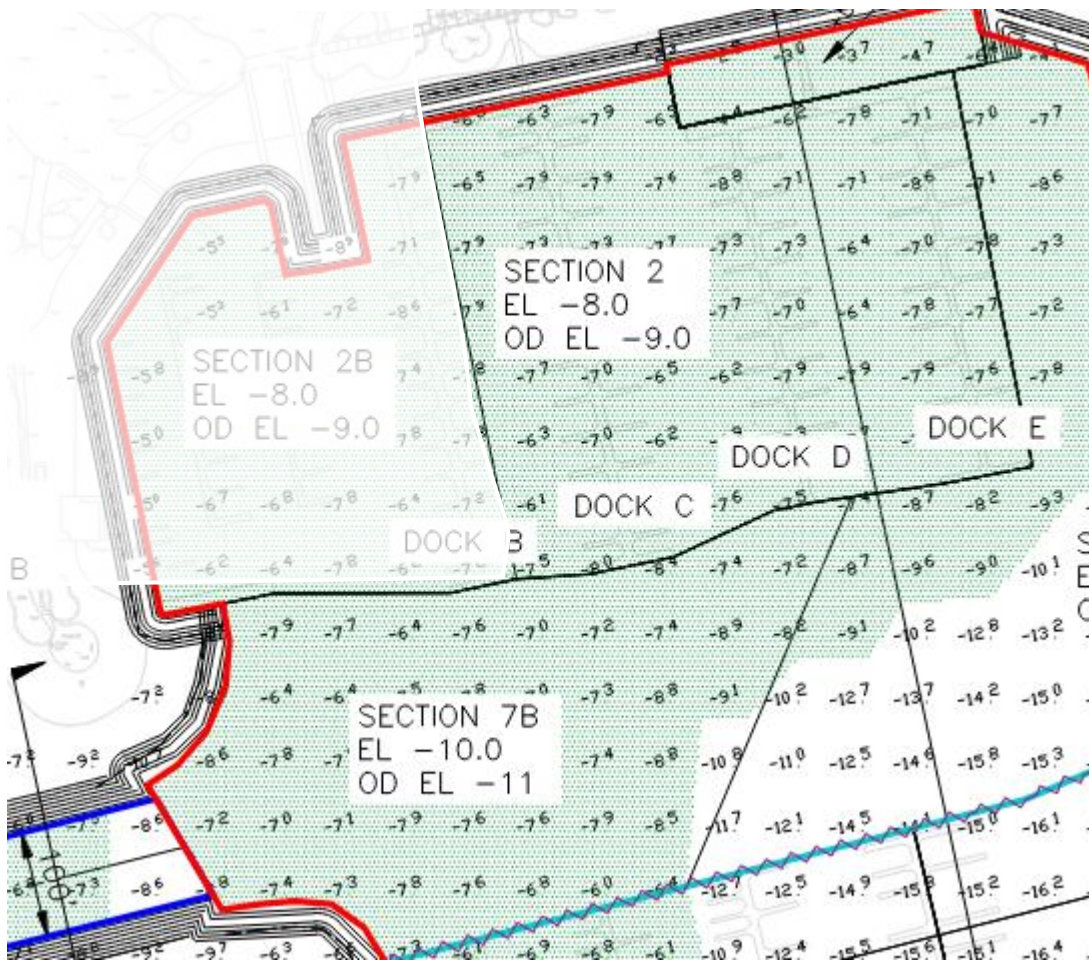


Marina Capital Projects  
Slipholder Meeting



ISSUED FOR BID  
SUBMITTAL

# Northern Marina



- Project will support the new D&E Docks restoring the bottom depth to -8' MLLW.
- Main fairway will be dredged to -10 MLLW
- Marina staff will work with slipholders located on Dock C to relocate vessels during dredging.
- Relocation will be very temporary, 1-2 weeks.



# Southern Marina



- Dredging will occur at O Dock (-8' MLLW) and H/I Dock (-8' MLLW).
- Dredging is expected to begin at 7am and extend to 7pm, Monday - Friday.
- Marina staff will work with Dock O slipholders to relocate vessels during dredging.
- Relocation will be very temporary, 1-2 weeks.



# Where is the material going?

At least 63% of the dredged material will be going to beneficial reuse wetland restoration sites in San Francisco Bay.

Cullinan Ranch Restoration Area



Montezuma Wetland Restoration Project



A little piece of Berkeley Marina?

# What to Expect During Construction

- ▶ Anticipated construction window is from August 1 through November 30, 2024
- ▶ Dredge barges and scows will likely mobilize to the marina a few days before August 1.
- ▶ Staff will keep slipholders up to date on progression of the construction and provide advance notice to relocate vessels





# Docks D&E Replacement



Jesus Espinoza  
Associate Civil Engineer  
Department of Parks, Recreation & Waterfront

Marina Capital Projects  
Slipholder Meeting

March 16, 2024

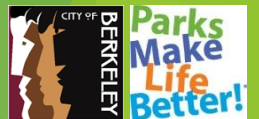
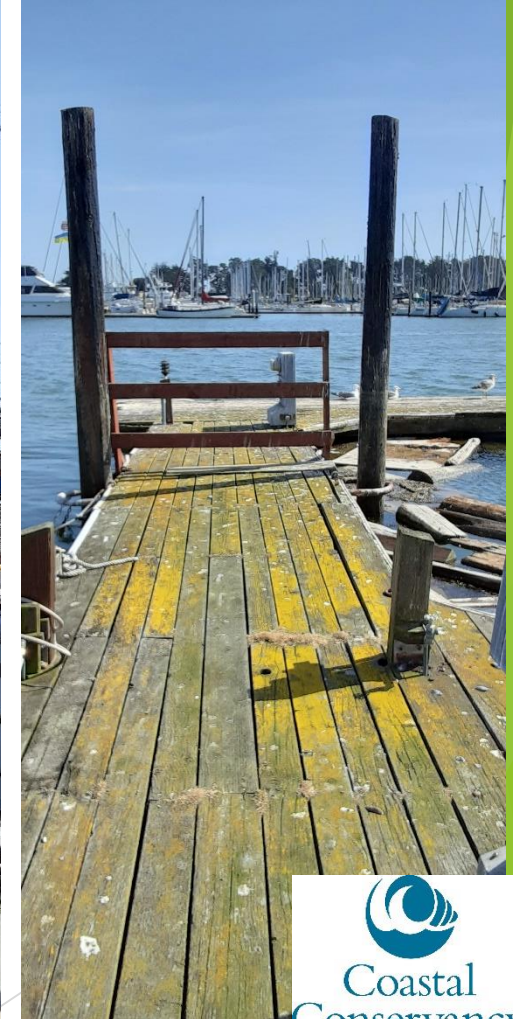
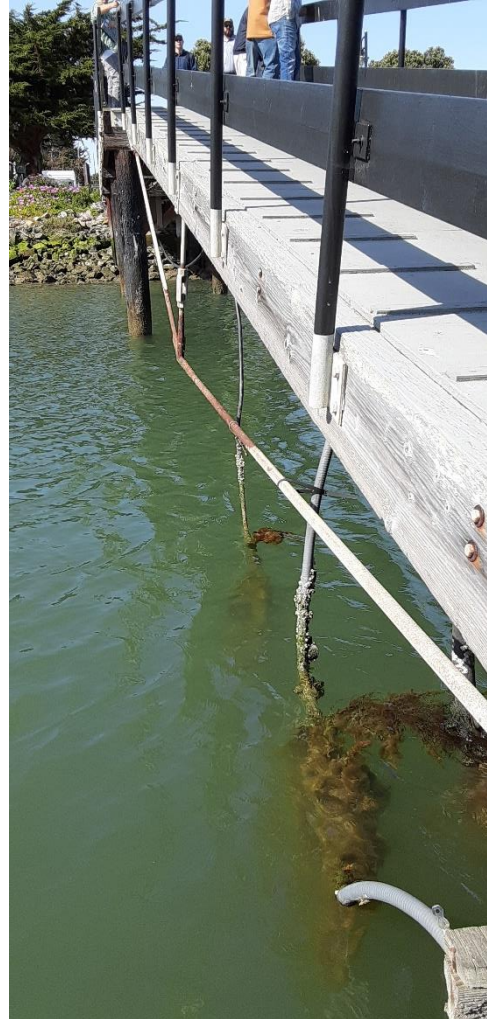




# Docks D&E Replacement

## EXISTING CONDITIONS

- Built in 1960's - oldest docks in Berkeley Marina
- Originally built for 88 slips, however due to deterioration, only half of slips are safe for users
- Dated utilities





# Docks D&E Replacement

## CONSTRUCTION ELEMENTS

- New docks, piles and gangway
- 79 (at installation), up to 94 slips (future expansion) with slip lengths from 35' to 46'
- New Utilities will include new electric system with pedestals (30A and 50A receptacles), water and fire protection lines
- Landside accessibility improvements



# Docks D&E Replacement

## ANTICIPATED CONSTRUCTION SCHEDULE

### Construction

- Phase 1 - Demolition: August - October 2024
- Dredging Under Docks D&E: October - November 2024
- Phase 2 - Docks Installation: June - December 2025

Staff will keep slipholders up to date on progression of the construction and provide advance notice to relocate vessels



# O-Dock Electrical Upgrade

## ❖ PROJECT GOALS

- Upgrade the dated electrical systems at O-Dock and K-Dock to meet the current code requirements with safe and user-friendly access to the pedestals at the slips. The electrical load rating at O-Dock will be upgraded from 600AMP to 800AMP to accommodate future demands at the Marina. The new system will provide ground fault protection, and any vessels with ground fault issues will need to be addressed.

## ❖ PROJECT STATUS

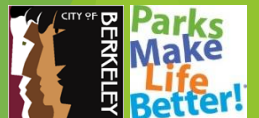
- 2<sup>nd</sup> Phase of O & K Electrical Upgrade Project
- K Dock Completed in 2023
- Equipment delays - awaiting electrical pedestals for Dock O

## ❖ ANTICIPATED CONSTRUCTION SCHEDULE

- Tentative construction re-start in May 2024 (3 months)
- If delays persist, construction may push into 2025

Marina Capital Projects  
Slipholder Meeting

March 16, 2024



# Anticipated Construction Timeline

Project	2024										2025											
	APR	MAY	JUN	JUL	AUG	SEP	OCT	NOV	DEC	JAN	FEB	MAR	APR	MAY	JUN	JUL	AUG	SEP	OCT	NOV	DEC	
Entrance and Channel Dredging					■	■	■	■														
Docks D&E Replacement					■	■	■	■	■	■	■	■	■	■	■	■	■	■	■	■	■	■
O-Dock Electrical Upgrade*		■	■	■	■	■	■	■	■	■	■	■	■	■	■	■	■	■	■	■	■	■

In-Water Construction  
 In-Land Construction

**\*Tentative schedule (On-going Electrical Component Supply-Chain Delay)**

- Currently assessing the possibility to start work in May, 2024
- If work cannot start in **May**, 2024, work may be on-hold until 2025, or we have a gap in the dredging and D&E construction to reduce impact to slipholders.





# Questions on Dredging, D&E and O-Dock?

Nelson Lam, P.E.  
Supervising Civil Engineer  
Capital Projects Division - Waterfront  
Department of Parks, Recreation & Waterfront  
[NeLam@CityofBerkeley.info](mailto:NeLam@CityofBerkeley.info)



# K-Dock Restroom Renovation Project

## Project Goal

- ❖ Enhance security with improved user experience for both public and slip-holder users
- ❖ Interior space with new energy and water efficient fixtures while meeting the latest American with Disability Act (ADA) standards
- ❖ Comply with Gender-Neutral Restroom Requirements
- ❖ Anticipated construction schedule **Fall??** 2025

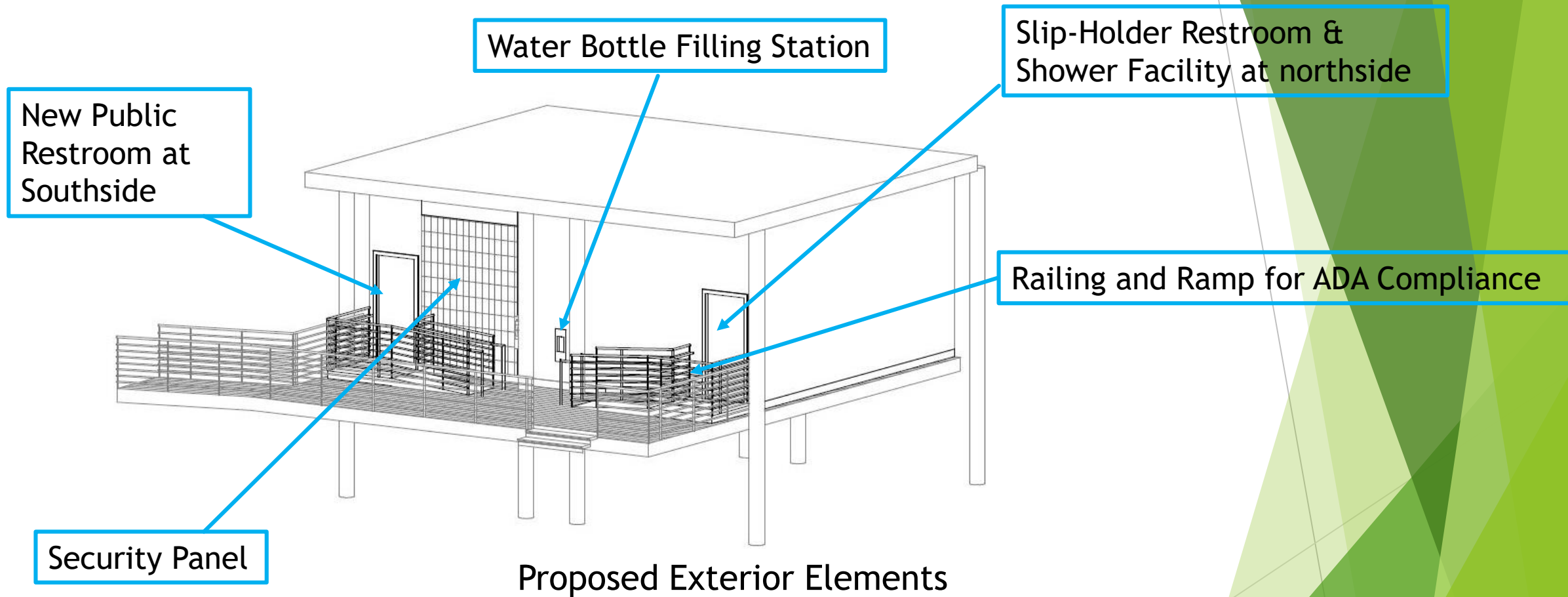
Marina Capital Projects  
Slipholder Meeting



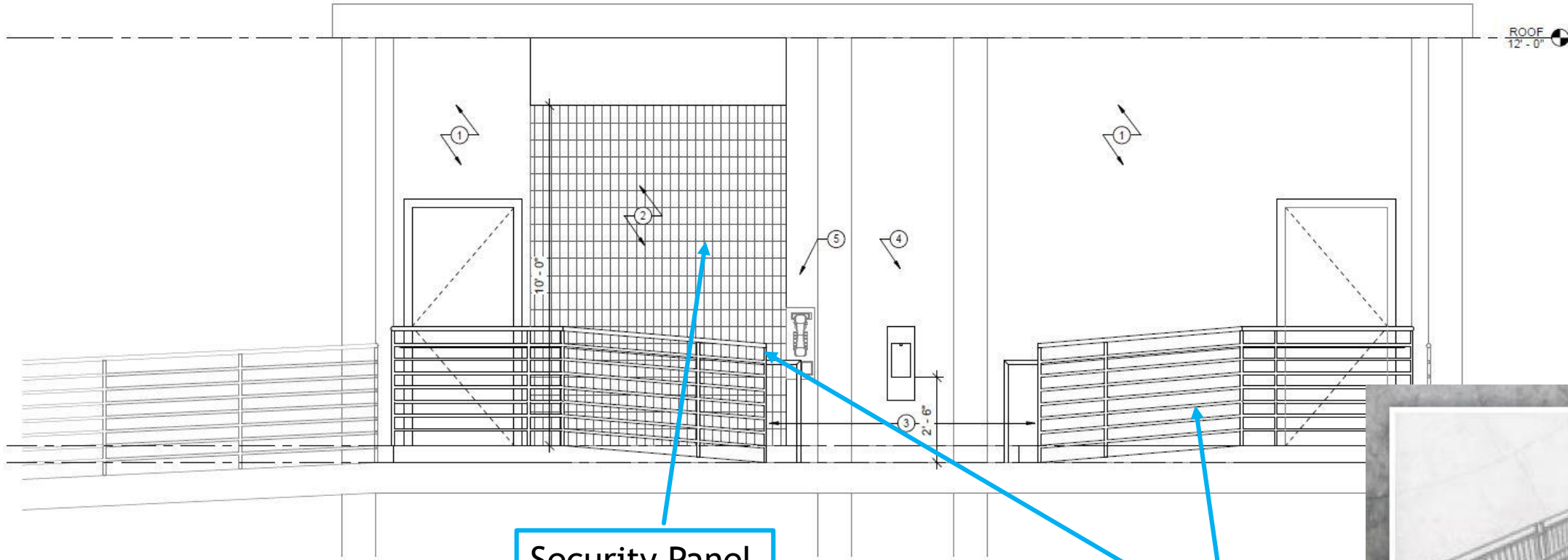
Robert Chan  
Assistant Civil Engineer  
Department of Parks, Recreation & Waterfront



# K-Dock Restroom Renovation Project

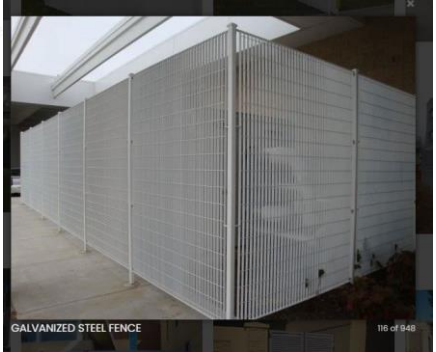


# K-Dock Restroom Renovation Project



1 FRONT ELEVATION  
SCALE: 1/2" = 1'-0"

Security Panel



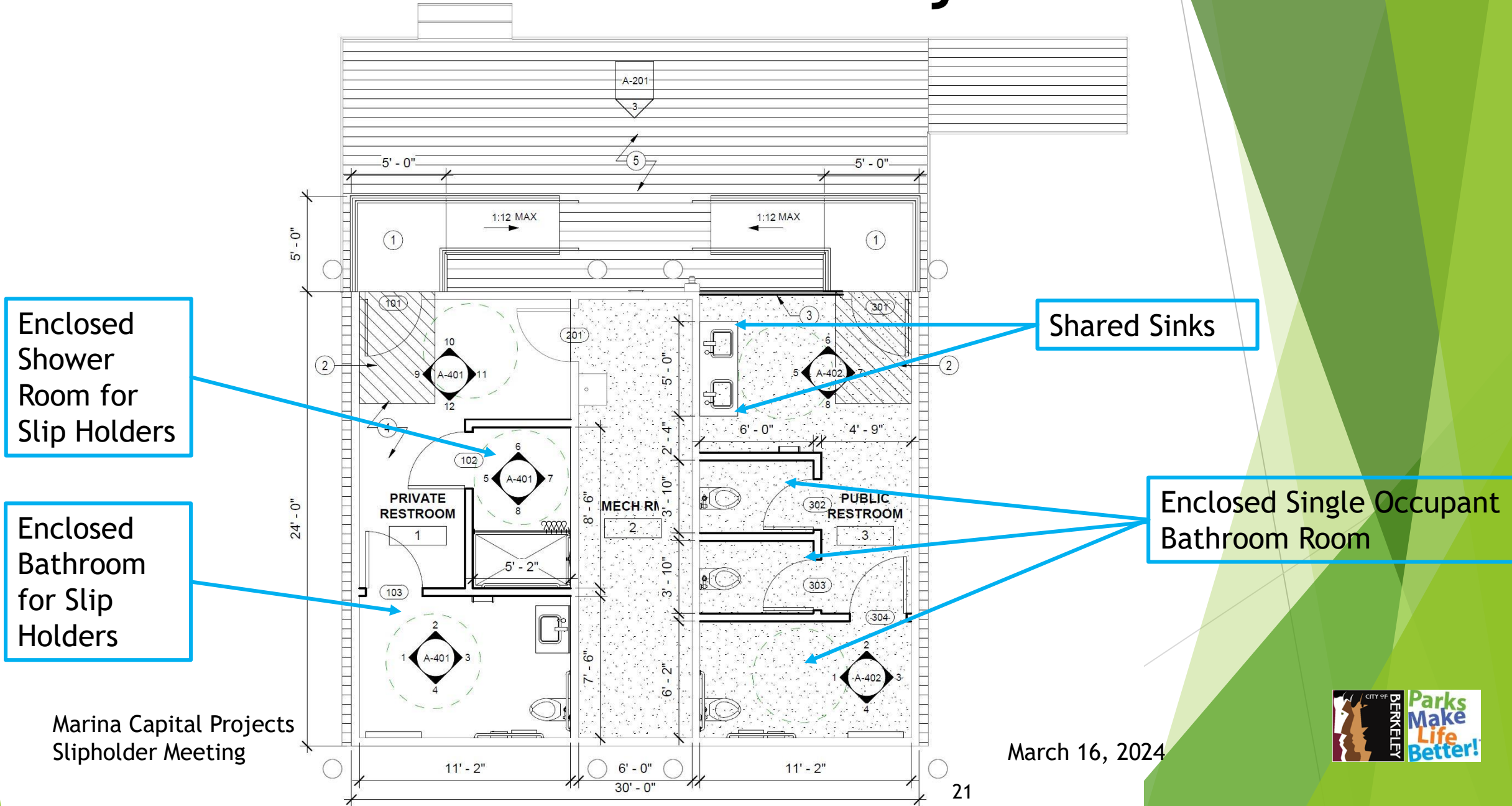
GALVANIZED STEEL FENCE 116 of 948

ADA Ramp and Railing





# K-Dock Restroom Renovation Project



Enclosed Shower Room for Slip Holders

Enclosed Bathroom for Slip Holders

Shared Sinks

Enclosed Single Occupant Bathroom Room

Marina Capital Projects  
Slipholder Meeting

March 16, 2024



# K-Dock Restroom Renovation Project

## Feedback on the proposed layout

### For further questions on K-Dock Restroom Project

Nelson Lam, P.E.

Supervising Civil Engineer

Capital Projects Division - Waterfront

Department of Parks, Recreation & Waterfront

[NeLam@CityofBerkeley.info](mailto:NeLam@CityofBerkeley.info)



# Thank you!

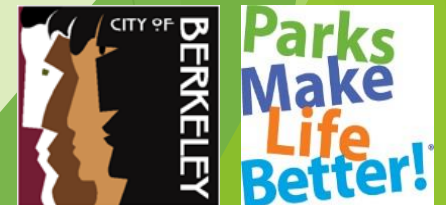


Marina Capital Projects  
Slipholder Meeting



# Waterfront Updates:

- New Waterfront businesses
  - Roaming Bean - coffee cart located in the South Cove East parking lot area, right along the bay trail
  - Marina Seafood Dockside Patio located just below Hana Japan, open for dinner on weekdays and lunch and dinner on weekends. Closed on Monday
- Upcoming Events
  - Scavenger Hunt - March 30<sup>th</sup> 12pm - 1:30pm
  - Bay Festival - April 27<sup>th</sup>





# Waterfront Updates:

- Dock & Boat cleanliness & safety
  - Boat seaworthiness
    - Staff are taking a close look at vessels and their seaworthiness. Vessels with excessive storage on decks may be deemed unseaworthy, and Marina staff will reach out to those owners.
  - Excessive storage (docks and floats)
    - A reminder that nothing is allowed on the docks other than steps. Neatly coiled hoses and shore power cables are acceptable.
    - Storage floats cannot be in the water either; Use of a berth is restricted to one vessel only, not including a dinghy or small boat up to 14 feet in length, provided that neither the vessel or the dinghy or small boat extends beyond the limits of the berth width and length.
  - Shorepower cords - As we work towards updating Marina infrastructure and safety, we are taking a closer look at our electrical systems. A concern of our Public Works electricians has been the use of household extension cords used in the dock receptacles. These do not comply with the National Electric Code, as the breakers on the receptacles are larger than the limit of these cords. Marina staff will be reaching out to those using household extension cords or other questionable cords or adapters.
  - Registration and Insurance - Marina staff have been reaching out to those slipholders for whom we do not have current registration and/or insurance on file. It is a requirement for all slipholders to have this paperwork and provide proof to the Marina Office.



**Thank you for joining us!**

**Please reach out to the Marina  
Office for any  
questions/comments.**

**510-981-6740**

**marina@berkeleyca.gov**

